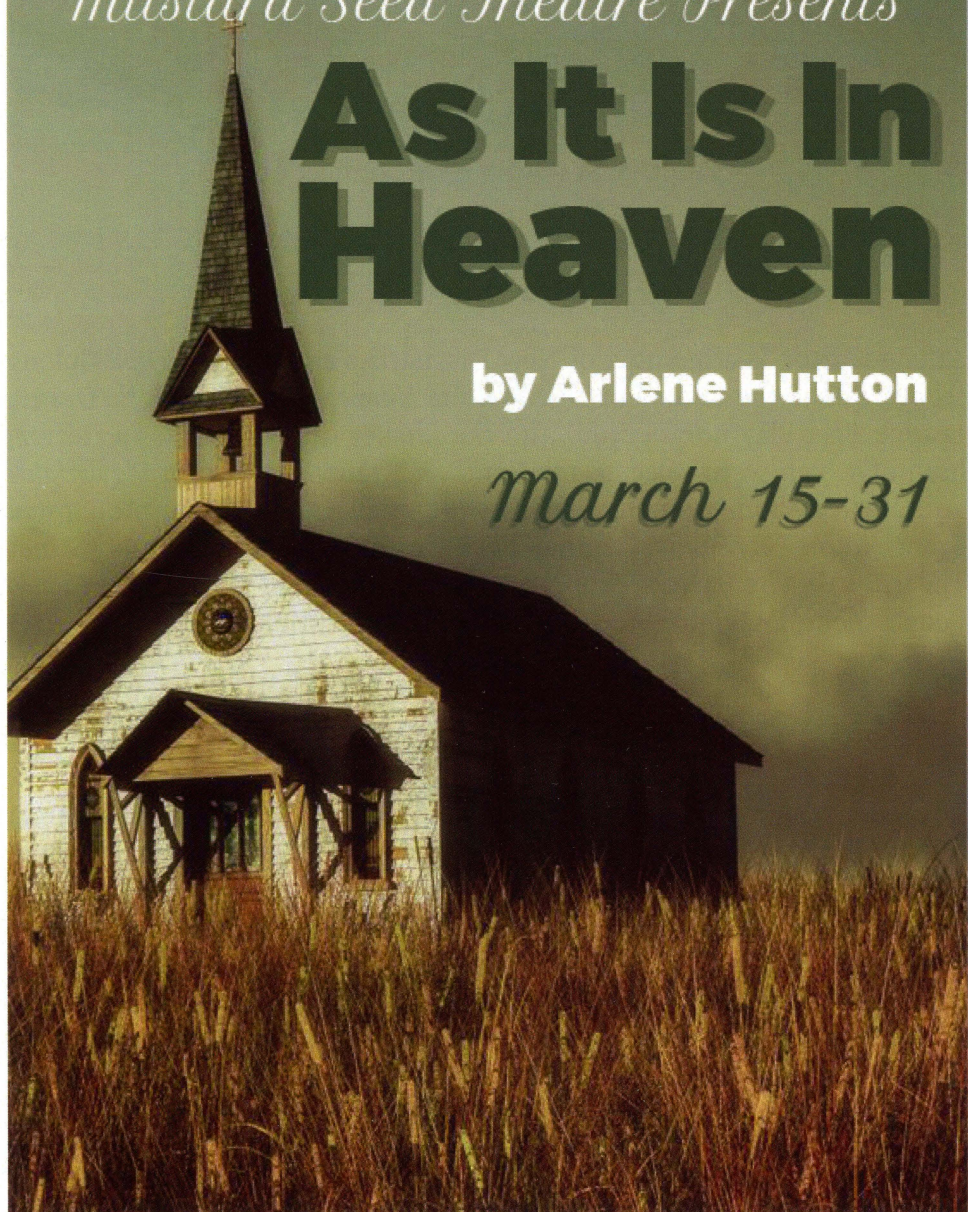


Mustard Seed Theatre Presents

As It Is In Heaven

by Arlene Hutton

March 15-31



Presented by special arrangement with Dramatists Play Service, Inc., New York

6800 Wydown Blvd.

St. Louis, MO 63105

314-719-8060

www.mustardseedtheatre.com

SPECIAL THANKS:

Ron Robinson

Joe Clapper

Fontbonne Community Connection

PLAYWRIGHT BIO:

Arlene Hutton is a member of New Dramatists and a MacDowell Colony fellow. She is the author of *Last Train to Nibroc* (2000 New York Drama League Best Play nomination) and the Shaker drama *As It Is In Heaven*, both of which were selected for Smith & Kraus *Best Women Playwrights* anthologies. A four-time Heideman Award finalist and a three-time Samuel French Short Play Festival winner, her New York credits include 78th Street Theatre Lab, The Barrow Group, Circle-in-the-Square Downtown, Alice's Fourth Floor, Ensemble Studio Theatre, HERE, and Vital Theatre.

THE SHAKERS AND THIS PLAY:

To escape religious persecution in England, nine Shakers came to America in 1774. Led by Mother Ann Lee, their worship was filled with ecstatic dancing and spiritual visions. After her death in 1784, Shaker life and worship became more orderly. They lived celibately, as Sisters and Brothers of Christ. All aspects of their lives were seen as ways to worship God. In their meeting house, after public confessions of sins, they sang in unison and danced with prescribed patterns and steps. Shaker communities thrived and moved West in the early 1800's.

As It Is In Heaven is set in a Shaker community in Pleasant Hill, Kentucky, in the early 1840's. During this time, there was a spiritual revival in the Shaker communities around the country. Sisters and Brothers saw visions of Mother Ann and received gifts of spirit drawings, poems and songs. Worship services again became highly emotional and ecstatic.

CAST

Fanny *Patrice Foster*
Jane *Jennelle Gilreath*
Betsy *Alicia Revé Like*
Hannah *Amy Loui**
Peggy *Laurie McConnell**
Phebe *Mary Schnitzler*
Izzy *Christina Sittser*
Polly *Amanda Wales*
Rachel *Leslie Wobbe*

CREATIVES

Stage Manager *Maram Samaha*
Asst. Stage Manager *Carly Uding*
Director *Deanna Jent*
Lighting Designer *Bess Moynihan*
Sound Designer *Zoe Sullivan*
Set Designer *Cameron Tesson*
Props Master *Laura Skroska*
Costume Designer *Jane Sullivan*
Technical Director *Jon Hisaw*
Asst. Technical Director *Tom Stevenson*
Artistic Director *Deanna Jent*
Executive Director *Bess Moynihan*
Production Stage Manager *Traci Clapper*
Box Office/House Manager *Morgan Fisher*

*member of Actor's Equity Association

CAST



Patrice Foster (Fanny) is thrilled to be working with Mustard Seed Theatre! Recent St. Louis credits include, *Good People* (Kirkwood Theatre Guild) and *Sin Titulo* (St. Louis Actors Studio). Before moving to St. Louis, Patrice had been working as an Actor, Director and Educator in Chicago. Patrice received her MFA in Acting from the University of Arkansas and is an Theatre adjunct faculty member at Lindenwood University.

Jennelle Gilreath (Jane) is thrilled to make her debut with Mustard Seed this season. She most recently acted in "*The Flick*" with R-S Theatrics, and will be seen with New Line Theatre and Stray Dog Theatre this year. Jennelle is a graduate of The Professional Actor Training Program in Chattanooga, TN. Favorite roles include: *Cabaret* (Sally Bowles), *Mrs. Warren's Profession* (Vivie Warren), *Carousel* (Julie Jordan) and *Last Train To Nibroc* (May). She is a burlesque performer with her troupe, The Bon Bons, and travels as a singer performing WWII music at reenactment events. Jennelle wishes to thank Deanna for the opportunity to perform a favorite playwright with amazing women.



Alicia Revé Like (Betsy) is a proud graduate of the University of Missouri in Columbia with a BA in music. She is overjoyed to be returning to the Mustard Seed stage, where she is known for her roles of Nella in *Gee's Bend* and Aunt Scandalicious in *An Invitation Out*. Other regional credits include: *To Kill A Mockingbird* (St. Louis Rep), *The Wiz* (Coterie Theatre, Kansas City, MO) and *Voices: Sounds of America* (TLT Productions). She has also appeared in *Purlie*, *The Mountaintop*, *Tell Me Something Good* and *Miss Julie*, *Clarissa and John* at The Black Rep Theatre here in St. Louis. Like is currently a company member of the show *American Musical* at the Sheldon Concert Hall.

Amy Loui (Hannah) returns to the Mustard Seed stage having last appeared here with the remarkable cast and crew of *Dancing At Lughnasa* (nominated for Best Ensemble, St. Louis Theater Circle Awards). She has performed with most of the Equity theaters in St. Louis and regionally has appeared with Copper Mountain Rep and Gold Herringbone Productions in Hawaii. Founder of Riverstone Productions, she enjoys both film and commercial work, and is recognized by many as the Voice of God, a designation earned from her many years of voice work. Next up: Amy will appear with the Tennessee Williams Festival's production of *A Streetcar Named Desire* (Eunice). (a personal note to Deanna: thank you for the challenge and your trust - you inspire me.)

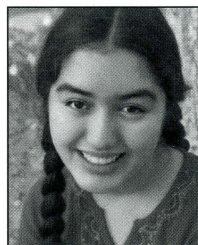


Laurie McConnell (Peggy) is so excited to work with this incredibly talented team, helmed by the amazing Deanna Jent! Recent roles include Amanda in *Glass Menagerie* (Bluff City Theatre), Miss Julie in *Miss Julie*, *Clarissa and John* (The Black Rep - Judy Award, *St. Louis Post-Dispatch*) and Joanne in *Company* (Insight Theatre - Best Supporting Actress, St. Louis Theatre Critics Circle). Laurie sends love and thanks to Debby, her coach and to Alan, her compass. "*Don't make something unless it is both necessary and useful; but if it is both necessary and useful, don't hesitate to make it beautiful.*" - Shaker philosophy



Mary Schnitzler (Phebe) has been a part of St. Louis theatre for over 25 years. She is thankful to be back at Mustard Seed and was last seen in *Bosnian American, The Dance for Life*. Some of her favorite roles include Everywoman in *Wonder of the World* (The Orange Girls), Huda in *9 Parts of Desire* (St. Louis Actors Studio), Chana in *Women's Minyan* (The New Jewish Theatre), Myra/Myrna in *The Mineola Twins* (mostly) harmless theatre), and Lyssa in *An American Daughter* (The Orange Girls). Mary teaches and directs at Whitfield School.

Christina Sittser (Izzy) has had so much fun studying the joy, dedication, and dilemmas of the Shaker way of life. Christina acted in her first play at 5 years old, and she has now worked on over 50 shows. Recent credits include *The Tempest* at Dallas Theater Center, and *Unsuspecting Susan* at Inevitable Theatre Company. Christina has also worked, in various roles, at STAGES St. Louis, Shakespeare Festival St. Louis, Rebels and Misfits, OnSite Theatre Company, St. Charles Christmas Traditions, and the New Jewish Theatre's Youth Theatre. She thanks her family for all their support and Jesus, her Lord and Savior, because "every good and perfect gift is from above" (James 1:17). Visit her at www.christinasittser.com.

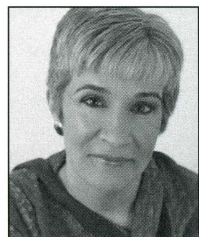


Amanda Wales (Polly) works as an actor, playwright, and stand-up comic in the St. Louis area. She has most recently been seen in the Ensemble of *Titus Androgynous* (YoungLiars), Antonia in *The Tempest* (SIUE's Summer Showbiz), and Viola in *Twelfth Period* (ERA). Offstage, she has worked as a playwright in SATE's 2018 Aphra Behn Festival, and several productions with Theatre Nuevo. In her off-time, she enjoys trying international snack foods, pretending to like the gym, and napping with her fat dog, Martha.

Leslie Wobbe (Rachel) is delighted to be on stage again having last appeared as Agnes in *Dancing at Lughnasa*. Other Mustard Seed shows include *Jane Eyre*, *Imaginary Jesus* and *Smoke on the Mountain*. She is a founding member of Mustard Seed and had the privilege of serving behind the scenes as Managing Director. Last May she embarked on a new adventure as Community Relations Coordinator for the Community Music School of Webster University. She sends a huge thank-you to Tom who takes care of holding the household together and love to her teenagers Royal and Ronin. To all her Shaker Sisters - it's a joy to tell this story with you.



CREATIVES



Deanna Jent (Director) is the Artistic Director of Mustard Seed Theatre and a Professor of Theatre at Fontbonne University, where she's been teaching since 1995. She has directed at professional theaters throughout St. Louis, including the New Jewish Theatre, Shakespeare Festival St. Louis Touring Company, The Orange Girls, ACT Inc., Stray Dog Theatre, and St. Louis Shakespeare. She won awards for "Best Director of a Musical" in 2011 for *Godspell* and 2013 for *All is Calm: The Christmas Truce of 1914*. She has written stage adaptations of the novels *Pride and Prejudice* by Jane Austen, *Till We Have Faces* by C.S. Lewis and *Imaginary Jesus* by Matt Mikalatos. Her play *Falling* won the Kevin Kline award for Best New

Play of 2011 and was nominated for a Drama Desk Best Play award following its Off-Broadway run in 2012. Deanna will be directing *The Merry Wives of Windsor* at the Illinois Shakespeare Festival this summer. Thanks as always to her family and her tribe.



Traci Clapper (Production Stage Manager & Master Electrician) Traci is so grateful to be a part of Mustard Seed's 11th season as Production Stage Manager and Master Electrician. She holds a BA in Performing Arts with a concentration in Arts Management from Fontbonne University. She has worked in various roles at MST and in the FBU theatre department since 2013. Aside from MST/FBU she regularly works with Opera Theatre of Saint Louis, COCA, and UMSL. Traci would like to thank her family and MST/FBU friends for all of the support.

Bess Moynihan (Lighting Designer & Executive Director) is a graduate of the Fontbonne University

Theatre Program. Previously Bess has worked as Managing and Producing Director for Hot City Theatre. Currently she is the Production Manager for Washington University's Edison Theatre. Bess also works as a Resident Designer for Slightly Askew Theatre Ensemble as well as a Lighting Designer for various other projects in St. Louis. She has been nominated three times for a Theatre Circle Award of Outstanding Lighting Design. Thanks to Deanna, Morgan, Traci, Michael and to you, the theatre-goer, for supporting live theatre.



Maram Samaha (Stage Manager) is ecstatic to return to Mustard Seed Theatre as the Stage Manager for *As It Is In Heaven* after she was the Assistant Stage Manager two years ago on *Kindertransport*. Maram is a third year student studying stage management at Webster University. This has brought her the experiences of getting to be the Artistic Administrative Assistant and Community Engagement Intern at Shakespeare Festival St. Louis. As well as being the Production Stage Manager for *Pippin* at Proctors in Schenectady, New York for their Broadway Camp this past summer. She is excited to see what adventures come up next for her!



Zoe Sullivan (Sound Designer) graduated from Fontbonne in 2014 with a BA in Performing Arts and a minor in Graphic Design. They so loved working on the shows as a student and are thrilled to continue their work with Mustard Seed and the department shows. Zoe most recently designed sound for MST's productions of *Dancing at Lughnasa* and *Remnant* and New Jewish Theatre's production of *The How & The Why*. They also designed sound for the FBU student productions of *The Trojan Women* and *Principal, Principle*. In addition, Zoe designed the season's artwork for Mustard Seed and Fontbonne University Theatre. Many many thanks to Fontbonne, Deanna, and Bess for all the opportunities. Love to the parents, Chelsey, and the Chosen Family. GO SEE A PLAY!



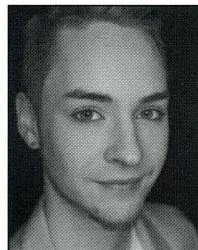
Jane Sullivan (Costume Designer) was a theatre educator at Jefferson College for twenty-seven years before her retirement. She designed costumes for *Shadowlands*, *Godspell*, *All is Calm*, *Falling*, *Dancing at Lughnasa* and *Remnant* (Theatre Circle Award Nomination- Outstanding Costume Design) for Mustard Seed Theatre; and *Reality* and *The Divine Sister* for Hotcity. Jane has also worked with ACT INC, Dramatic License Productions and Ozark Actors Studio. She designed *A Piece of My Heart*, *Eurydice*, *The Children's Hour*, *Nonsense* and *Principal Principle* for Fontbonne University and she is the costume shop coordinator. Thanks to Deanna and the cast and crew for this wonderful experience. And thanks to Michael, Mark and Zoe for their encouragement, love and support.





Laura Skroska (Props Master) is excited to be returning to Fontbonne and Mustard Seed Theatre. Laura studied technical theatre at Northwestern University and SIU-Edwardsville, and received her MFA in Painting from Fontbonne University. Laura is currently the Assistant Technical Director for the New Jewish Theatre. She has also worked as Props Master for Shakespeare Festival St. Louis, Union Avenue Opera, Winter Opera St. Louis, and Gateway Center for Performing Arts. She would like to thank her husband and family for their support.

Cameron Tesson (Set Designer) This is Cameron's first time designing for Mustard Seed Theater but has been paint charge for the company before and has also worked with the Fontbonne theatre department. Cameron holds his BFA in technical theater with an emphasis in scenic design from Missouri State University. His design for the Odyssey at Missouri State was recognized by the Region 6 Kennedy Center American College Theater Festival and he has also won the Mannequins on the Loop art project. Currently he works as a designer and painter around the St. Louis area along with being the technical director at University City High School. Additionally he has worked regionally with companies including Union Avenue Opera, The Muny, Upstream Theater, COCA, Tent Theater and Exclusive Events. Mr. Tesson believes in connecting the arts with the community. www.tessondesign.com



Carly Uding (Assistant Stage Manager) is excited to be working with the Mustard Seed family again after graduating from Fontbonne University with a Bachelors in Performing Arts and Arts Management in 2016. She recently moved back to St. Louis after working with Walt Disney World as a costumer for their daily parades. She has been seen in works around town such as Mustard Seed's *Bosnian American* (Ariyana), First Run Theatre's *Trick and Anotonia* (Rachel), and Saint Charles Christmas Traditions, as well as guest directed for the Every 28 Hours Play Festival held here in St. Louis. Thanks to Maram for being such an awesome guide and teammate.

Mustard Seed Theatre Invites You To A Cabaret Fundraiser
Featuring

Angela Shultz

Saturday, April 21 at 7:00 pm

Reception begins at 6pm • \$50 Tickets



Up Next at Mustard Seed Theatre

Presented by Mustard Seed Theatre with Theatre Nuevo

Luchadora!

by Alvaro Saar Rios

June 1-17, 2018

