

1934.

Club  
Year

the S. J.  
following  
ty James,  
nner, sec-  
ten, treas-  
ers is the  
An inter-  
curricular  
t provides  
program  
atus play,  
sides late  
ming, rid-  
golf. The  
r meetings  
ch month.

Mr. T. M.  
realizing  
ads and  
program  
first prize,  
second  
Germaine  
fancy pin.  
prizes of  
s, donated  
the stud-  
st number  
prizes were  
erig, Mary  
off, respec-

ior at St.  
ughter of  
Hemple,  
appear in  
esides this  
in Carmen  
as a mem-  
in Lohen-  
Tosca.

CO.  
Road

oppe  
DAD  
Mo.  
Tuesday  
Manicure

J N  
uis, Mo.

or  
es'

TEED

FONTBONNE LIBRARY

## THE FONT

Fontbonne College, St. Louis, Missouri

Vol. VIII

Friday, November 9, 1934.

No. 3.

Living Catholic Authors  
Subject For Discussions  
During Book WeekStudents To Read Papers  
In Library On Repplier,  
Sheen, And Dudley.

Book Week, November 11 to 17, will be celebrated at Fontbonne with discussions on "Living Catholic Authors" every day at 12:30 p. m. in the library of Ryan Hall. This year marks the sixteenth anniversary of the inauguration of Book Week. It is a movement sponsored by the National Association of Book Publishers and by the American Library Association.

This movement was originally intended to serve as an advertising medium for new books. Librarians immediately realized that with one week set aside from the necessary routine work of a library, countless readers could be introduced to worthwhile books of contemporary authors and others. Each year since the birth of Book Week, it has been more widely observed, and has found a permanent place in the library calendar.

The students are to be the lecturers, giving a short biographical sketch, and a summary of the works of each author. Monday, Eleanor Muller Thym will discuss Owen F. Dudley, and Lucille Borden. (of particular interest because of the fact that she is a native of St. Louis). Tuesday, Fulton Sheen and Christopher Dawson will be the topics of Doreen McMahon. Hilaire Belloc and Gilbert K. Chesterton are to be discussed by Virginia Guyol. Wednesday, For Thursday, Jane Hoffman has chosen Kathryn Bregy and Louise Imogene Guiney. For the closing discussion Friday, Sigrid Undset and Sheila Kaye-Smith will be presented by Ellen Finney.

Senator H. Truman Makes  
Short Visit To College

Harry S. Truman, newly-elected Senator from Missouri, visited Fontbonne last Thursday, November 1, accompanied by Mr. H. J. Surkamp, brother of Sister M. Rosaline, of the staff of Nativity Parochial School, St. Louis, Mo.

Senator Truman expressed his admiration for the college and its ideal setting. He is reported to have described it as "a very fine institution". Unfortunately, since November 1st was a holiday for the students, he could not visit the classes.

Boarders' Dance Held  
In Harvest SettingAutumn Decorations Transform  
Parlors Into Fitting Scene  
For Gay Dress Parade.

It was a lovely, crisp autumn night with a few timid stars blinking merrily down on the guests as they came up the drive to the gayly lighted parlors in the Fine Arts building where the resident students were giving their initial dance of the year, Nov. 7.

Fontbonne took on her most festive air that evening; the parlors had been converted into a cozy lounge, and an inviting ballroom decorated in autumn colors of deep red, gold, and brown. Gay pumpkins, lanterns and chrysanthemums added to the colors already bright.

The music was delightful, "Pardon My Southern Accent" being especially enjoyed and requested by Doreen McMahon of Atlanta, Georgia, who looked sweet and sophisticated in a sapphire blue velvet ankle-length gown, over which she wore a cocktail jacket of silver lace with a Queen Ann collar and sleeves.

Up and down the ballroom could be seen many and various beautiful gowns. Betty Hoffman, Prairie du Chien, Wis., chairman of the dance, looked small yet distinctive in an ankle-length black crepe gown trimmed with taffeta flounces and ruffles.

(Continued on Page 3, Column 2)

L. Munsch Named Chairman  
For Annual Junior Bridge

The junior class has selected December 8 as the date of the Junior Bridge, an annual feature given by the class to defray expenses incurred by the prom. Arrangements for this party are under the direction of Louise Munsch, general chairman. She will be assisted by the following committees: prizes, Vera Stueber, Clare Harder, and Vera Gauvin; refreshments, Estelle McCarthy, Roma Persells, and Helen Mark; tickets, Rosemary Michelson, Hortense Gillette, and Ann McNamara.

The bridge will be given in the resident students' dining room.

Besides the bridge a number of smaller committee projects are being conducted by the class. Chances now are being sold on a blue and white hand-made quilt which will be raffled December 3. A series of cake and candy sales, sponsored by a special committee directed by Helen Mark, are being held weekly in the den.

St. Louis U. Glee Club  
To Entertain WednesdayNegro Spirituals Featured  
In Program Directed By  
Dr. Patrick W. Gainer.

The St. Louis University Glee Club will appear in concert at Fontbonne College auditorium Wednesday evening, November 14, at eight o'clock. Composed of thirty men, the club has representatives from the following schools and colleges of the university: arts and sciences, commerce and finance, law, medicine, dentistry, education, graduate, and social service. Dr. Patrick W. Gainer is director; Mr. John Tillman, manager.

The program will consist of three groups of songs, special numbers by a guest artist whose name will not be announced before the concert, and piano solos by Francis Riordan, well-known pianist of Kansas City, Mo. The club's last group of songs consists entirely of Negro spirituals sung in costume in the traditional manner. A tentative program follows:

- 1.
- (a) Ave Maria ..... Arcadelt
- (b) Lo a Voice to Heaven is Sound-  
ing ..... Bortniansky
- (c) O Bone Jesu ..... Palestrina

Special Number by Guest Artist.  
(To be announced)

- 2.
- (a) The Volga Boatmen ..... Russian Folk-Song
- (b) Carol of the Russian Children ..... Russian Folk-Song

(Continued on Page 3, Column 3)

Reception of New Sodalists  
Scheduled For December 7

The Sodality of Our Lady has set Friday, December 7, as the day for the reception of new members. As the feast of the immaculate Conception occurs on Saturday, Dec. 8, the Spiritual Council decided that Friday, December 7, which is also the first Friday, would be an appropriate day for the reception. The change in date was announced by Catherine Scullin, prefect of the Sodality at Fontbonne.

The change in class schedule will be as follows: all classes meeting Friday at 8:30 a. m. will assemble at 1:00 p. m., classes which convene at 9:30 a. m. will meet at 10:00 a. m. This program will enable the members of the Sodality to be present at Mass, receive Holy Communion, and attend the breakfast.

Snow Whirl Foretold  
By Governing Body;  
Students In FlurryStudent Council To Sponsor  
Annual Informal Dance  
In Arts Building.

Dazzling snow-flakes whirling madly to gay and enticing music—laughter—glowing eyes—lovely ladies in sophisticated velvet and silken gowns—

their escorts,  
well-groomed  
and distinguish-  
ed-looking—  
dipping and  
swaying in this  
glamorous sett-  
ing. A fantasy?  
"The Snow  
Whirl"! —Nov-  
ember 23.

The student council, evidently weary of laying down the law, checking up on uniforms and the like, have turned their sagacious heads to delightful frivolity in an effort to abolish any false ideas

which the rest  
of the student  
body might  
entertain con-  
cerning social  
qualities of the  
students who  
form the chief  
executive group  
of the college.

Contrary to  
previous years  
when the social season was opened by  
the sophomore harvest dance, the  
council will set a precedent by giving  
the first all-school function of the  
year. This seems to be a suitable

change, and  
the sophomores  
being agree-  
able, graciously  
gave this  
date in ex-  
change for the  
post-holiday  
dance previously  
sponsored by  
the council.



Bluma Neveleff

Jane Hoffman, chairman of the student council, named the committee chairman at a recent meeting. Kathryn Stanley, heads the orchestra committee; Bluma Neveleff, is in charge of the ticket sale, and Helen Marie Coleman, is chairman of the program committee. Other chairmen are: decorations, Marie Pfeifle; publicity, Virginia O'Hearn.

## THE FONT



Published semimonthly during the scholastic year  
at

### FONTBONNE COLLEGE

Wydown and Big Bend Blvd.  
St. Louis, Mo.

SUBSCRIPTION, \$2.00 PER YEAR

#### THE STAFF

|                  |                  |
|------------------|------------------|
| Editor           | Virginia O'Hearn |
| Managing Editor  | Jane Hoffman     |
| Associate Editor | Ellen Finney     |
| News Editor      | Vera Gauvin      |

#### REPORTERS

|                    |                     |
|--------------------|---------------------|
| Virginia Weckler   | Virginia Kelahan    |
| Betty Hoffman      | Kathryn Stanley     |
| Rosemary Michelson | Virginia Cunningham |
| Marjorie Holton    |                     |

#### BUSINESS MANAGER

Virginia Lucas

#### ADVERTISING

Vera Stueber

#### CIRCULATION

|                |                 |
|----------------|-----------------|
| Daphne Ramirez | Marguerite Gill |
| Dorothy Wagner | Marjorie Crooks |
|                | Ann O'Connell   |

### Interest in the Symphony

In his talk to Fontbonne students on College Day, the Reverend Joseph A. McMahon lamented the fact that the trend in education today is toward the practical side with the result that the cultural influences of music and art are neglected. This is one of the distressing results of our struggle for economic efficiency. We tend to forget, the speaker continued, that the attainment of culture is the real purpose of a college education.

Fontbonne, however, prides herself on the fact that she is doing her part to stimulate an appreciation of music. Nothing is more significant in this regard than the great demand for tickets for the concerts of the St. Louis Symphony Orchestra. This is particularly encouraging when compared with the statistics of last year. At that time Fontbonne students purchased ninety tickets; this year over two hundred eighty-five individual concert tickets have been disposed of. This is a strong indication that the students are interested in music, and that they are eager to attend the concerts. It means, also, that Fontbonne students appreciate the musicianship of the St. Louis Symphony Orchestra; they realize that the organization is offering an unusual group of prominent soloists, as well as presenting its finest season of orchestral numbers.

### Rival of Ann the Apple Girl

We have no doubt that the import of this article would make material for the most astounding news story that the FONT has ever brought before the eyes of its reading public. But because of our erstwhile relations with the St. Louis GLOBE-DEMOCRAT and the loyal trend of our nature, we have decided to share our secret only with the select group which reads our column.

Since the publication of the last issue of our paper, at which time Ann the Apple Girl resumed her residence at Fontbonne, we have learned with sorrowing hearts that the much-respected morning daily has plagiarized our little column. In other words, the GLOBE-DEMOCRAT has started a comic strip featuring "Apple Mary".

We have been undecided whether to consider ourselves complimented by this move on the part of the larger publication, or to feel indignant, and righteously so, at the injury. However, if the latter be the case, with our true Christian spirit we forgive all and trust that the GLOBE did not realize the seriousness of its offense. If the former situation be true, we say, "We thank you".

### Mexican Persecution of Catholics

The attitude of the American public toward Catholicity has never been more clearly indicated than by its general indifference toward the persecution now going on in Mexico. A detailed account is unnecessary here, for every newspaper brings almost daily reports of more destruction and murder. It is a cold and calculated attempt to abolish Catholicism in Mexico, just as the Roman emperors attempted to crush it out in the beginning of Christianity. And we have Christ's authority for predicting that it will be just as futile.

### Collection of Rare Old Books Interest Fontbonne Students

There is nothing as impressive as a collection of old books. The older and mustier they are, the more impressed we become. A seventeenth or eighteenth century edition is awe-inspiring, plunging us in an instant into the atmosphere of bygone days. The Fontbonne library has an unusually fine collection of books whose yellow pages give mute evidence of their historic value and significance.

Among these the most outstanding collection is that of the French books donated by Mrs. Adele Hornsby of St. Louis, Mo. There are about eight shelves of these. Included in these are a work of Bossuet, dated 1680; the *Explication Du Mystere De La Passion De Notre Seigneur Jesus Christ* from the historic Estienne Press, one of the oldest in France, dated 1728. The *Memoires de Napoleon*, edited by the famous Firmin Didot press, was printed in 1823. From a French convent where the "Dames de Sainte-Clotilde" lived, we have the *Histoire de L'Empereur Charles Quint*, 1845, by Robertson.

The German collection contains works of Eckhor, Gorres, Tauler, Janssen and Pastor. They were the gift of the Right Reverend Monsignor R. J. Jacques of Escanaba, Michigan.

A missal and a mathematical text of 1778, from the collection of the late Mr. Thomas W. Purcell, are exceedingly interesting.

All of these books are available for reference purposes.

### College Alumnae Report Varied Activities In Many Fields

The following alumnae are in the spotlight this week.

Pauline Reardon, '34, is instructor of physical education at Ursuline Academy, San Antonio, Texas.

Cecil Hoerr, '30, is chief clerk at the St. Louis Training School for Mentally Defective; the school is located on Hall and Bell roads.

Louise Karst, '34, has obtained the position of Librarian at the Sherman Branch, and also at the Central Branch, 14th and Olive.

Jane McEvilly, '32, has been made supervisor of case work of the Illinois Emergency Relief Association, with headquarters in East St. Louis, Ill.

The most disturbing point connected with the affair, however, is the fact that the civilized world has expressed little concern or interest in what is going on. When the Jews were driven out of Germany, many voices were raised in protest and many public appeals were made expressing keen disapproval of Hitler's autocratic treatment of the Jews. Conspicuously absent are comments on the disgraceful state of affairs in Mexico.

For many of the younger generation this is the first indication of the antipathetic attitude of many people toward the Roman Catholic Church. It is their first realization that being a Catholic can be a hardship in many ways. But with the knowledge of these facts there also come feelings of exultation and pride in being identified with a religion that boasts so many soldiers of Christ who are willing to lay down their lives for Him.

### THE ATTLE ALKS.....

June Thornton, president of her class, committed Freshman Blunder No. 99,999 the other day when she presented the catalogue index card with her book at the librarian's desk.

What! A Magician in the Faculty? It certainly looks like it ever since Sister Eleanor, in all seriousness, said, "Now watch the board carefully while I go through it again".

Catherine Scullin and Theresa Burmeister set an all-time record for industry. They report that their respective theses were finished this summer. Temperatures of 110 degrees and up must have been the cause of such feverish activity.

Laura Lorenz, a native Missourian, told a member of the staff of THE FONT that Dr. Lyman J. Wood of the chemistry department would address the students at the School of Minds, Rolla, Mo.

They say it was Father Kiefer who said a text book for sophomore religion class is not compulsory, but any student not having one will absolutely fail the course.

Helen Marie Coleman, an honorable senior has looked rather flabbergasted ever since Sister Eleanor asked her, "Don't you remember in 1812.....?"

The joke is on Miss Theresa Carmody of the home economics department. Saturday as she was stepping out of the elevator in Scruggs Department Store, she bumped into a small boy. She apologized by patting him on the head and saying, "Oh, I am so sorry!" The "small boy" proved to be a model, deaf, dumb, blind, and lifeless.

### Ann The Apple Girl

Dear Jake

I had a big time Wednesday. The boarders had a dance and you never saw so much excitement. Some said they were going to have blind dates. Jake, I never heard of blind dates did you? I only heard of the kind of dates that Mom fixes at Christmas, stuffed and sugar ones. Well, anyway, I went to their dance on purpose to see those blind dates they did so much talking about. I did not see no refreshments of any kind. Guess they ate them all at the beginning.

It's harder to sell apples here lately, Jake because of some of the girls. They call themselves juneyurs and are forever having cake sales and candy sales. I bought a chance on their quilt raffle and if I win it I'll put it in my trueso.

Just  
Ann.

P. S.—Isn't it getting late early these nights? Guess it is because winter is coming.

Mildred Daurenheim, a former member of the freshmen class, has chosen Wednesday, November 21, as the date of her marriage to Mr. Glenn Perfrow of Oklahoma City, Okla.

### Education In C

National  
her 5 to 9.  
of the depu  
program th  
Cline, O.S.  
Planning o  
Virginia. I  
Trails of E  
"Rural"  
"What  
in Educated  
Delya Pot  
Through Ed  
presided

All the ex  
Sister M. B  
the summe  
department  
July 20 D  
school a  
Tenth  
the supervis  
of the St. I  
This  
Archdiocese  
Schools unde  
Lao Stee  
Rever  
instruct  
home, is p  
of Chri  
The stude  
anner sch  
ob  
M  
Loret  
Lorette LoP  
Scullin, T  
Watson, '34,  
Virginia Kob  
is domestic  
catechism, an  
together with  
over two hu  
and at the cl  
children rece  
Communion.

### Font Staff Of Glo

THE FONT  
ative tour  
Democrat play  
Nov., on Thu  
May 15, at 7:00  
been arranged  
Lorette, manag  
and Mr. Carly  
here the grou

The staff i  
familiar with  
Union. All of  
and to the m  
pahan daily, a  
in general, she  
beneficial in th

From the o  
comes the an  
series of the  
reported to  
the last week

grau  
Mary  
alumn

## Education Week Observed In Classes With Program

National Education Week, November 5 to 9, was observed by students of the department of education in a program this morning. Sister Marie Celine, O.S.U., read a paper on "The Meaning of Christian Education"; Virginia Lucas, "Some Material Fruits of Education"; Leontone Meyer, "Rural Education"; Ruth Wehrman, "What Will Tomorrow Demand in Educated Catholic Women?"; Evelyn Potter, "Enriching Character Through Education". Virginia Guyol presided.

At the conclusion of the program Sister M. Berenice read the report of the summer session conducted by fourteen members of the Fontbonne department of education. From June 25 to July 20 these students taught summer school at Our Lady Help of Christians, Tenth and Wash Streets, under the supervision of Miss Anne Collins of the St. Louis Public School System. This school was one of the Archdiocesan Catholic Vacation Schools under the direction of Reverend Leo Steck of the Fontbonne faculty. Reverend Wm. H. Reeves, formerly instructor in Italian at Fontbonne, is pastor of the Our Lady Help of Christians parish.

The students who comprised the summer school staff were Misses Florence Noble, B.S., '30, Helen Marie Coleman, Margaret Bernard, Genevieve Holtz, Virginia Guyol, Marie Pfeiffer, Loretto Gayou, Kathryn Wahl, Annette LoPiccolo, A.B., '34, Catherine Scullin, Theresa Burmeister, Lilah Watson, '34, Rosemary Donley, and Virginia Kohler, A.B., '34. Classes in domestic science, dramatic art, catechism, and choral were organized together with the regular class work. Over two hundred children attended and at the close of the session twenty children received their First Holy Communion.

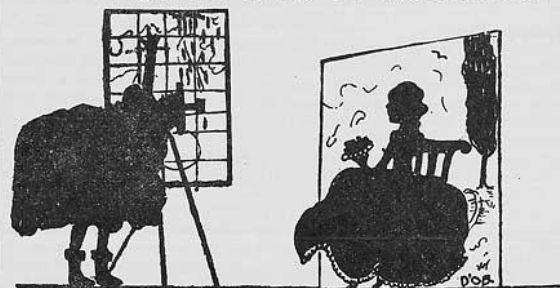
## Font Staff To Make Tour Of Globe-Democrat Plant

The FONT Staff will make an extensive tour of the St. Louis Globe-Democrat plant, Twelfth and Franklin Blvd., on Thursday evening, November 15, at 7:00 o'clock. The tour has been arranged by Mr. Joseph J. McAuliffe, managing editor of the paper, and Mr. Carlyle Thomas, who conducts the groups through the building.

The staff is eager to become familiar with the journalistic profession. All of the information in regard to the mechanism of a metropolitan daily, and newspaper methods in general, should prove to be very beneficial in this regard.

From the office of the registrar comes the announcement that the grades of the mid-semester are to be reported to that office during the last week of November.

## They Say, "Opportunity Knocks But Once!" We Say, "It Pounds 'Til November 27!"



## Doctor L. J. Wood To Speak At Meeting Of Phi Beta Chi

Dr. Lyman J. Wood, of the department of chemistry at St. Louis University and at Fontbonne College, will give an illustrated lecture at the Phi Beta Chi meeting, Tuesday, November 13 at 8 p. m., in the den of Ryan Hall. The subject of the lecture will be "Crystals and Rays".

This lecture was given last month for the benefit of the faculty and upper classmen of the Missouri School of Mines, Rolla, Mo. Phi Beta Chi extends an invitation to the classes in Organic and Qualitative Analysis to attend.

Dr. Wood, besides being a professor at the St. Louis University Medical School in both graduate and undergraduate departments, has been a local officer in the American Chemical Society meetings and has published his results in several scientific magazines.

## Boarders Entertain Informally

(Continued from Page 1, Column 2)  
Eda Mae Klapp, Belleville, Ill., accentuated her blond loveliness by wearing a black crinkle satin gown trimmed with an ermine collar. Elizabeth Beckley, Sheridan, Wyoming, was becomingly dressed in a peach crepe with a pleated cape collar. Virginia Smith, Atlanta, Ga., wore a midnight blue dinner dress with silver flowers at the shoulder; Marjorie Aylward, Livingston, Ill., carried a little velvet muff that matched the trimmings on her emerald green crepe floor length dress.

Velvet was popular at the dance. Mary Eleanor Muller Thym, Kansas City, Mo., wore a stunning semi-formal of a deep wine shade, relieved in its simplicity only by three gardenias at the shoulder. Marjorie Crooks, also of Kansas City, wore black velvet, trimmed with tiny ermine tips at the neckline.

Mimi Duval, Butler, Mo., was most attractive in an unusual two-piece creation. The skirt, which touched the floor, was of black velvet cut on princess lines, and the butcher-boy jacket, with a high, round neck was of gold lame.

## Fontbonne Students Attend Weekly Symphony Concerts

Taking advantage of the unusual opportunity offered by the St. Louis Symphony Orchestra for the 1934-35 season, thirty-three Fontbonne students have purchased tickets for the concerts. These students are:

Theresa and Catherine Burmeister, Antoinette Bafunno, Eileen Irvine, Mary L. Knochel, Elise Dolores and Mary Helen Drummond, Jane McLaughlin, Leontone Meyer, Marcella Rateman, Jane Hoffman, Ann and Jane O'Connell, Virginia Dumphy, Peg Moran, Marjorie Holton, Lorraine Korte, Catherine Harrington, Mary Agnes Reilly, Laura Lorenz, Dorothy Cullinan, Bernice Becker, Ruth Wehrman, Alma Tackaberry, Gertrude Bey, Elizabeth Harrison, Mary Margaret Schlink, Bluma Neveleff, Cecelia Reichert, Ruth Powers, Rosemary Donley, Marian Haas, and Sally Gartner.

In its beautiful new home in the Municipal Auditorium, the St. Louis Symphony, second oldest in the United States, ended last Friday upon its fifty-fifth season under the most brilliant auspices in its history. Vladimir Golschmann returned from abroad for his fourth season as conductor.

## St. L. U. Glee Club Gives Concert

(Continued from Page 1, Column 3)

- (a) Romance ..... Ascher
- (b) Etude in D Flat ..... Wollenhaupt
- Francis Riordan, Pianist
- 5.
- Old Black Joe ..... Negro Character
- Sketch.
- John Tillman
- 6.
- Negro Spirituals:

- (a) Lament: "I'm Troubled in Mind"
- (b) Deep River
- (c) I Couldn't Hear Nobody Pray
- (d) Swing Low, Sweet Chariot
- (e) What Kind of Shoes You Gwine to Wear?
- (f) They Crucified My Lord
- (g) Steal Away

Dr. Gafner is a former member of the Fontbonne faculty, having been an instructor in the English department during the years 1931-32. At present he is assistant professor in the English department at St. Louis University.

## With BATON, EASEL and MASQUE

Tryouts for the Footlights Club will be held Monday, November 12, at the assembly period. Prospective members will read selections from Shakespeare, or from one of the modern plays. Contrary to custom, those who have successfully passed the test will be placed on a tentative list until their reception into the club in February. Anyone interested in the Footlights Club is asked to communicate with Louise Munsch, chairman of the tryouts committee, or with members of the committee, Margaret Bernard, Ellen Finney, Helen Marie Coleman, and Gertrude Bey.

Fontbonne music lovers will be interested in the announcement of the Civic Music League of St. Louis concerning the annual concert series to be given in the Municipal Auditorium. There will be five concerts featuring the following artists, Gabriowitzsch and Bauer, world renowned pianists, November 20; Richard Crooks, leading tenor of the Metropolitan Opera Company, January 8; Lotte Lehman, dramatic soprano, January 29; Poldi Mildner, internationally famous girl pianist, February 26; Eugene Goossens will conduct the Cincinnati Symphony Orchestra on its visit to St. Louis, March 26.

These performances are scheduled to begin promptly at eight-fifteen p. m. on Tuesday evening, the different date being given above. A special student rate of two dollars and fifty cents for these five concerts has been offered by the Civic Music League. Leontone Meyer, president of Sigma Beta Mu, is in charge of the tickets for Fontbonne.

At the meeting Tuesday evening, November 13, at eight o'clock in the Fine Arts Building, Sigma Beta Mu will present a program on Bach and Debussy. After the regular order of business the first paper on the program, "Musical Tendencies before Bach's Time", will be read by Elsie Dolores Drummond. Mary Agnes Reilly will speak on "Bach's Life", and Elizabeth Monnig on "Bach's Style". Mary Louise Knochel will play Bach's "Prelude and Fugue in C Minor" from *The Well-Tempered Clavichord*.

The second part of the program will be devoted to Debussy. The topic of Gertrude Bey's paper will be "Debussy's Life", and of Leontone Meyer's "Debussy's Style". Martha Redmond will contrast the works of the both artists, Bach and Debussy. The musical numbers will be "Gardens in the Rain" and "Children's Corner", both by Debussy, to be played by Martha Redmond. "Preludes" by Debussy will be played by Leontone Meyer. At the conclusion of the program Bluma Neveleff will review the interesting musical news of the month.



## Mrs. Watts, Noted Lecturer, To Appear At Fontbonne

Mrs. Diana Watts of Netherbury, Dorset, England, lecturer of wide repute, will give a demonstrated lecture at the assembly period on Monday, November 19. The lecture will be on one of the following topics: Beauty in Movement as a Living Art, The Science of Perfect Poise, The Inspirational Sense of Beauty, A Comparative Study of Greek, Hindu, and Chinese Sculpture, or the Makers of Greece.

Numerous comments by worthwhile critics indicate the notable fame that Mrs. Watts has achieved both in England and in America. One European critic says that Mrs. Watts is an interesting person and an original scholar with a profound knowledge of Greek civilization. From the "Sidney Morning Herald" of Sidney, Australia, is this comment: "Mrs. Watts is a great artist; she is also scholarly and scientific."

Mrs. Watts has written several books. The most important of these is *The Renaissance of the Greek Ideal*, a classic work on the training of the body and the mind.

## 'So Red the Rose' Reviewed At Literary Guild Meeting

Stark Young's "So Red the Rose" was interestingly reviewed by Ellen Finney, a member of the senior class, at the Literary Guild meeting Wednesday at eight p. m. in the Fine Arts building. A story of the South, before, during, and after the War between the States, the novel depicts family plantation life, the return of the soldiers—from General Sherman returning to the scenes of his early manhood,—down to the raggedest Confederate trooper. The slaves are sympathetically portrayed and the brash Northern go-getters of post-war days find their places in this colorful Confederate romance.

## Mr. Thos Neenan, Lecturer

Mr. Thomas J. Neenan, LL. B., spoke to the class in commercial law yesterday at 3 p. m. on the subject of contracts. Mr. Neenan, a former member of the Fontbonne faculty, received his degree from St. Louis University, and is one of the successful young lawyers of the city.

## GLASER DRUG CO.

Big Bend and Clayton Road

WE DELIVER

## THE LEADING ART SUPPLY HOUSE of the SOUTHWEST BADERS

1112 Locust St., St. Louis, Mo.

## In The Spotlight

### Follow Thru

Members of the golf club will tee off next Saturday morning and every Saturday after that at one of the following courses: University City, Westborough, Sunset, or Westwood Country Clubs. This announcement was made by Dorothy Morse, manager of the golf club.

At the first meeting of the club last week plans were discussed for the tournament to be held in the spring. This contest will be followed by a luncheon given in honor of the winner of the tournament at one of the country clubs. The presentation of a trophy will take place at this luncheon. Prospective members are asked to consult the manager, Dorothy Morse.

### Silver Skates

Virginia Ottsen is the newly-elected manager of the Fontbonne Ice Skating Club organized last Friday in the gymnasium. Members of the club will meet at the Winter Garden every Thursday and Friday. Miss Bernice Sommer, '31, will supervise the class on Friday; Virginia Ottsen will direct it on Thursday.

Any student wishing to enroll in the club should apply to Virginia Ottsen for a membership card entitling the owner to skate any afternoon with the exception of Saturday, Sunday, or

any holiday afternoon, at the special price of twenty cents. Attendance will be recorded after each class. At the end of the season F. A. A. points will be awarded in accordance with the rules of the association.

### "I Nominate"

The Fontbonne College Athletic Association recently appointed managers for the different sports in which the members are participating. In charge of swimming is Elizabeth Schenk; golf, Dorothy Morse; tennis, Mildred Oldeg; archery, Bernice Becker; skating, Virginia Ottsen. Ann McNamara, winner of several prizes at the Fontbonne Spring Horse Show, is in charge of riding; Laura Lorenz, basketball; Tattie Olivieri, badminton; Gertrude Bey, ping-pong.

### Up And Over

The advanced riding class will meet for the first time tomorrow morning at eleven o'clock at Missouri Stables. Mr. Paul Flynn, instructor, has outlined a course consisting of technique in riding, handling, saddling and bridling, and equestrian matches. The usual riding fee will be charged. Classes will be held every Saturday at 11 a. m. Those students who are interested in riding are asked to see Ann McNamara, manager of the riding club.

## Review Of "My Mother" Given At Sodality Meeting

Today at the meeting of the Sodality of Our Lady in the assembly room at 11:30 a. m., Eileen Kelly reviewed "My Mother", the biography of Mrs. George Lord, the mother of the Reverend Daniel A. Lord, S.J. Father Lord, organizer of the Sodality of Our Lady in this country, is a well-known lecturer and author. Chances on an autographed copy of the book are being sold by members of a committee headed by Gertrude Bey. The price for each chance is ten cents.

At this meeting Antoinette Bafunno reported that the drive for old clothes had been a splendid success. The Fontbonne sodality was aided by the sodality of St. Joseph's Academy, and so a very generous contribution was made to the St. Vincent de Paul Society. That organization distributed

## S. ASHEN-BRENNER

4053 LINDELL BLVD.

Official  
Photographer of  
THE FONT



## S. SCHOENBRUN

5179 Delmar Blvd. St. Louis, Mo.  
FOrest 3919

## LADIES' TAILOR

Uniforms Made to Measure for  
Fontbonne College. Also Nurses'  
Capes, Uniforms, and Skirts...

PERFECT FIT GUARANTEED

## Academy Spiritual Council Chose Officers For Year

Officers of the S. J. A. Spiritual Council which is composed of representatives of the Sodality, C.S.M.C., League of the Sacred Heart, Publicity and Literature Committees are: Hope Davis, Elizabeth Hegger, Madeline Karros, Catherine Wels, and Mary Wingert.

### Books and Periodicals Donated

Donors of books and periodicals that have been recently added to the academy library are: Mr. and Mrs. Frank Carroll, Mr. and Mrs. John E. Riley, Miss Alice Connors, Mary Ann Carroll, Catherine Houlihan, Mary Curtin, Lucille Donnelly, and Goldie Friedman.

### S. J. A. Alumnae Officers

The following officers of the St. Joseph's Alumnae Association were elected at the October meeting: Miss Catherine Tracy, president; Misses Marie Galvin and Della Concannon and Mrs. B. J. Spaeth, first, second, and third vice-presidents; Miss May Timlin, secretary; Miss Irene McElroy, treasurer; Miss Virginia Maxwell, assistant secretary; and Mrs. A. J. Schillinger, representative in the St. Louis Circle of the I. F. C. A.

ICE SKATING EVERY DAY  
at the  
**WINTER GARDEN**  
520 DeBaliviere Ave.

## THE PARKMOOR

... All-Cream Ice Cream  
... Delicious Sandwiches

### SERVICE IN YOUR CAR

West  
Clayton Road at Big Bend  
North  
Kingshighway at Cote Brillante  
South  
Kingshighway at Chippewa