



Eleemosynary

by Lee Blessing

February 5-21, 2016

Fontbonne University Fine Arts Theatre
Clayton, Missouri

314-719-8060

www.mustardseedtheatre.com



CAST

Austen Danielle Bohmer ~ Echo

Nancy Lewis ~ Dorothea

Kelley Weber ~ Artemis

DESIGNERS & CREW

| | |
|----------------------|------------------|
| Director | Doug Finlayson |
| Asst. Director | Brooke Viegut |
| Stage Manager | Traci Clapper |
| Asst. Stage Manager | Emma Bruntrager |
| Set Design | Kyra Bishop |
| Light Design | Michael Sullivan |
| Costume Design | Jane Sullivan |
| Sound Design | Zoe Sullivan |
| Props Master | Meg Brinkley |
| Light Board Operator | Morgan Fisher |
| Sound Board Operator | Carly Uding |
| Wardrobe Assistant | Emma Bruntrager |
| Shop Supervisor | Jon Hisaw |
| House Manager | Joe Gardiner |
| Program Cover Design | Fox Smith |

SPECIAL THANKS

Nathan Schroeder



Fontbonne
UNIVERSITY



**Missouri
Arts Council**
The State of the Arts



CAST



Austen Danielle Bohmer (Echo) is thrilled to be making her Mustard Seed debut! Currently pursuing her BFA in acting at The Webster Conservatory, Austen's St. Louis credits include: Ariel in *The Little Mermaid* (Variety Children's Theatre), Christine Patterson in *One Man, Two Guvnors* (The Rep), and *Honk! The Musical* and *Stage Door* at Webster.



Nancy Lewis (Dorothea) is pleased to return to Mustard Seed where she was last seen as Maw Wheeler in *Going to See the Elephant*. Most recently, she appeared as Madame Arcati in St. Louis Actor's Studio production of *Blithe Spirit*, for which she received a St. Louis Drama Circle Award as Outstanding Supporting Actress in a Comedy. She has worked with New Jewish Theatre, Orange Girls, Shakespeare Festival St. Louis, Upstream, among others. She is an adjunct faculty member at Webster Conservatory where she teaches Kundalini Yoga and Meditation. Many thanks to Doug,

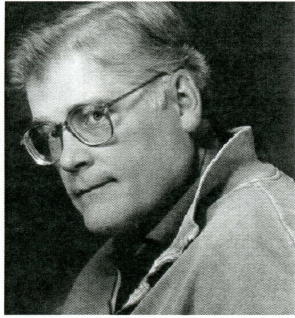
Kelley, Austen and our outstanding crew!



Kelley Weber (Artemis) is an original member of MST's Artistic Advisory Board. Roles at Mustard Seed have included Paulina in *Winter's Tale*, Joy in *Shadowlands*, Elmire in *Tartuffe* and Widbee in the first production at Mustard Seed, *Remnant*, almost ten years ago. Other favorite roles include Esther in *The Price* and Bella in *Lost in Yonkers* both at New Jewish Theatre, Alice in *Henry V* at Shakespeare Festival of St. Louis, and most recently, Darcy in *One Flea Spare* at SATE. Kelley has been director of theater at Clayton High School for 17 years. She holds her MFA in Acting and Directing from University of

Missouri, Kansas City. Thanks to Doug, Nancy, Austen and Deanna. This is for Hannah.

DESIGNERS & CREW



Doug Finlayson (Director) is pleased to have this opportunity to work with Mustard Seed Theatre. This past fall he directed *The Sunshine Boys* at New Jewish Theatre. Other NJT productions include *The Whipping Man*, *Lost in Yonkers*, *Way to Heaven*, *Via Dolorosa* and *Lebensraum*. Doug won the Kevin Kline Award for Best Direction of a Play for NJT's production of *Kindertransport*. Doug has directed for HotCity where he did *Maple and Vine*, *True West* and *Equus*, for which he was nominated for a Kevin Kline Award for Best Direction of a Play. Other Midwest productions include *Vanya and Sonia and Masha and Spike*, *Jeeves Intervenes*, *Act a Lady*, and *Resident Alien* for Nebraska Repertory Theatre, *A Gnome for Christmas* and *The Bremen Town Musicians* for the Imaginary Theatre Company, *The Merry Wives of Windsor*, *Pericles*, *Hamlet* and *Romeo and Juliet* at the Illinois Shakespeare Festival, *Leaving Iowa* and *How the Other Half Loves* at Northern Fort Theatre in Aberdeen, SD, *The Philadelphia Story* and *Inspecting Carol* at the Black Hills Playhouse, *Art* at the Ozark Actor's Theatre, and *Death of a Salesman* at Arrow Rock Lyceum Theatre. Doug first met Deanna when they both worked at Wisdom Bridge Theatre in Chicago. He served as Associate Artistic Director to Robert Falls and Richard E.T. White at Wisdom Bridge Theatre. He is currently the Head of Directing at Webster University.



Kyra Bishop (Set Design) continues to enjoy her work as part of the design team this season. Other Mustard Seed designs include *The Amish Project*, *All is Calm* (all three times) and *Gee's Bend*. Other St. Louis area design credits include *wUNDERland* (COCA), *Rigoletto*, *Don Giovanni*, and *A Streetcar Named Desire* (Union Avenue Opera), *The Rime of the Ancient Mariner* (Upstream); *The Great American Trailer Park Musical* (Dramatic License Productions); *Henry VI* (St. Louis Shakespeare); *Imagining Madoff* (New Jewish); *Reality* (HotCity); and *The Spitfire Grill* (Insight). She holds a BFA in Scenic Design from the Conservatory of Theatre Arts at Webster University. www.kyrabishopdesign.com



Meg Brinkley (Prop Master/Production Manager/ME) is proud to be working her 5th season at Mustard Seed, and very grateful to her uber-talented, amazing production team. She has designed props for many companies around town, including Shakespeare Festival St Louis, New Jewish Theatre, Act Inc, and HotCity. She is looking forward to starting as Prop Master for Opera Theatre St Louis this spring. Thanks to Deanna & Michael for the opportunities and support! Much love to Chuck, her 3 sons, EMT, & coffee.

DESIGNERS & CREW



Emma Bruntrager (Assistant Stage Manager) is thrilled to be working on this show with such an amazingly talented crew and cast. Emma is a Senior at Fontbonne University and will be graduating in the spring with a BA in Performing Arts and Literary Studies. She has worked on many Mustard Seed Productions in the past, including *All Is Calm* (all three years), *The Amish Project*, *Falling*, and many more! She has also worked around St. Louis at others companies, including Opera Theatre of Saint Louis, HotCity, Insight Theatre, and The Black Rep. She would like to thank her parents, who continue

to come see her shows with a smile on their faces, and MT of EMT for always having her back.



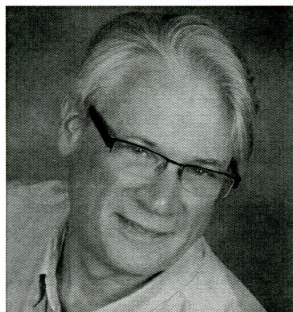
Traci Clapper (Stage Manager) is ecstatic to have had the privilege to work on this beautiful show with such fantastic performers, designers, directors and crew members. In May, Traci will be graduating with a BA in Performing Arts with a concentration in Arts Management. She can't thank Deanna, and the rest of the Mustard Seed and FBU Department family, enough for all of the amazing experiences and opportunities she has had during her time here at Fontbonne. Big hugs to her family, EMT and HGTV for always keeping her sane.



Jane Sullivan (Costume Design) was a theatre educator at Jefferson College for twenty-seven years before her recent retirement. She designed costumes for *Shadowlands*, *Godspell*, *Going to See the Elephant*, *All is Calm*, *Falling* and *The Amish Project* for Mustard Seed Theatre; and *Reality* and *The Divine Sister* for Hotcity. Jane has also worked with ACT INC, Dramatic License Productions and Ozark Actors Studio. She designed *Twelfth Night*, *A Piece of My Heart*, *Eurydice*, *The Children's Hour* and *Nunsense* for Fontbonne University. Jane is a member of the Mustard Seed Theatre

staff. Thanks to Deanna and the cast and crew for this wonderful experience. And thanks to Michael, Mark and Zoe for their encouragement, love and support.

DESIGNERS & CREW



Michael Sullivan (Lighting Design) is a Mustard Seed Advisory Board Member, an Associate Professor in the theatre program at Fontbonne, the Technical Director and resident Lighting Designer. Michael's Mustard Seed Theatre lighting designs include *The Amish Project*, *All is Calm* (Theatre Circle Award), and *An Almost Holy Picture* (Kline nomination). Michael's work at other theatres around St. Louis includes *Way to Heaven* (Theatre Circle Award) at New Jewish Theatre and *Maple and Vine* (Theatre Circle nomination) at HotCity Theatre. Upcoming projects include

Brighton Beach Memoirs and *An Inspector Calls* for Act Inc., and *Grey Gardens* for Max and Louie Productions. Much love to Jane, Mark and Zoe.



Zoe Sullivan (Sound Design) is a graduate of Fontbonne University's Theatre Program (2014), where she started her sound designing career with the first production of Deanna Jent's *Falling* in 2011. Her most recent sound design credits include *The Amish Project* with MST, *Bad Jews* with New Jewish Theatre and last summer's ACT INC. summer repertory. She will be working on Fontbonne's student production of *Almost, Maine* in March, and the very unique and exciting *Bosnian American Project* with Mustard Seed in April. Thanks to Meg, Deanna, et. al for the continued belief

that she can do this and heart eyes emojis to parents and Jen for the tough love.

Brooke Viegut (Assistant Director) is a Directing Major at Webster University. From Dallas, Texas, she began her career in dance, which led to music and finally theater. Recent projects include *Dogfight* (Asst. Dir.), and *True West* (Dir) at Webster University, and *Grease* (Dir./Choreo.), and *Seussical* (Dir./Choreo.) at ArtCentre Theatre. Thanks to Doug for this opportunity.

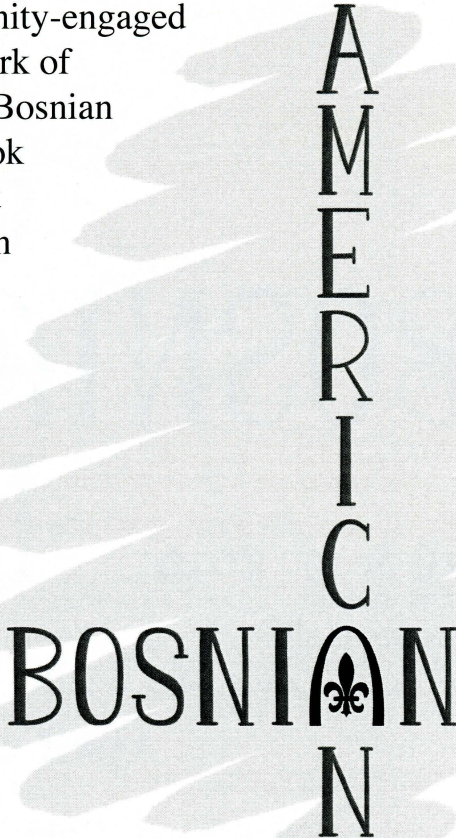
BOSNIAN/AMERICAN PROJECT

During the past year, we've been conducting interviews with members of the St. Louis Bosnian-American community about their immigration experiences. These stories have been synthesized into a new play which will have its world premiere April 15-17 at Grbic Restaurant in the Bevo Mills area followed by two weekends of shows in the Fontbonne Fine Arts Theatre. "Bosnian/American" is not a documentary retelling of stories but a theatrical celebration of the success of the Bosnian refugees in this city and an opportunity to learn more about some of our most influential neighbors. This community-engaged project builds on the work of Dr. Ben Moore and the Bosnian Memory Project. We look forward to seeing you at this uniquely St. Louisan theatrical event!

Adam Flores,
Director

Deanna Jent,
Playwright

Leslie Wobbe,
Producer



AMERICAN
BOSNIAN

APRIL 22 - MAY 1, 2016



mustard seed
theatre

A
M
E
R
I
C

N

BOSNIAN

April 16 & 17, 2016

Community Performance

Grbic Banquet Hall

4017 Keokuk St. Louis, MO 63116

April 22 - May 1, 2016

Mustard Seed Theatre Performance

Fontbonne University Fine Arts Theatre

Clayton, Missouri

314-719-8060

www.mustardseedtheatre.com