

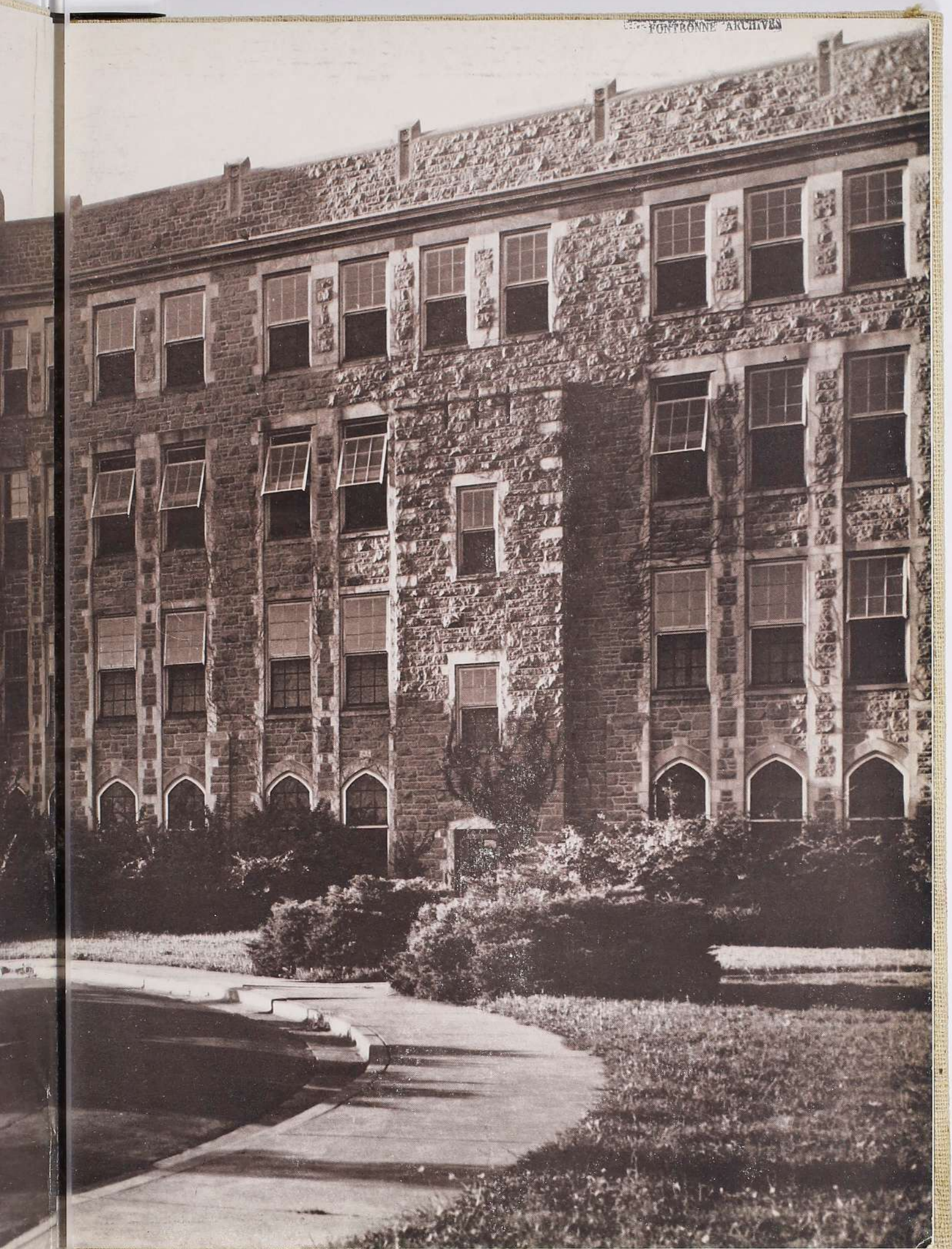


FONTBONNE



1953





the

Fontbonne

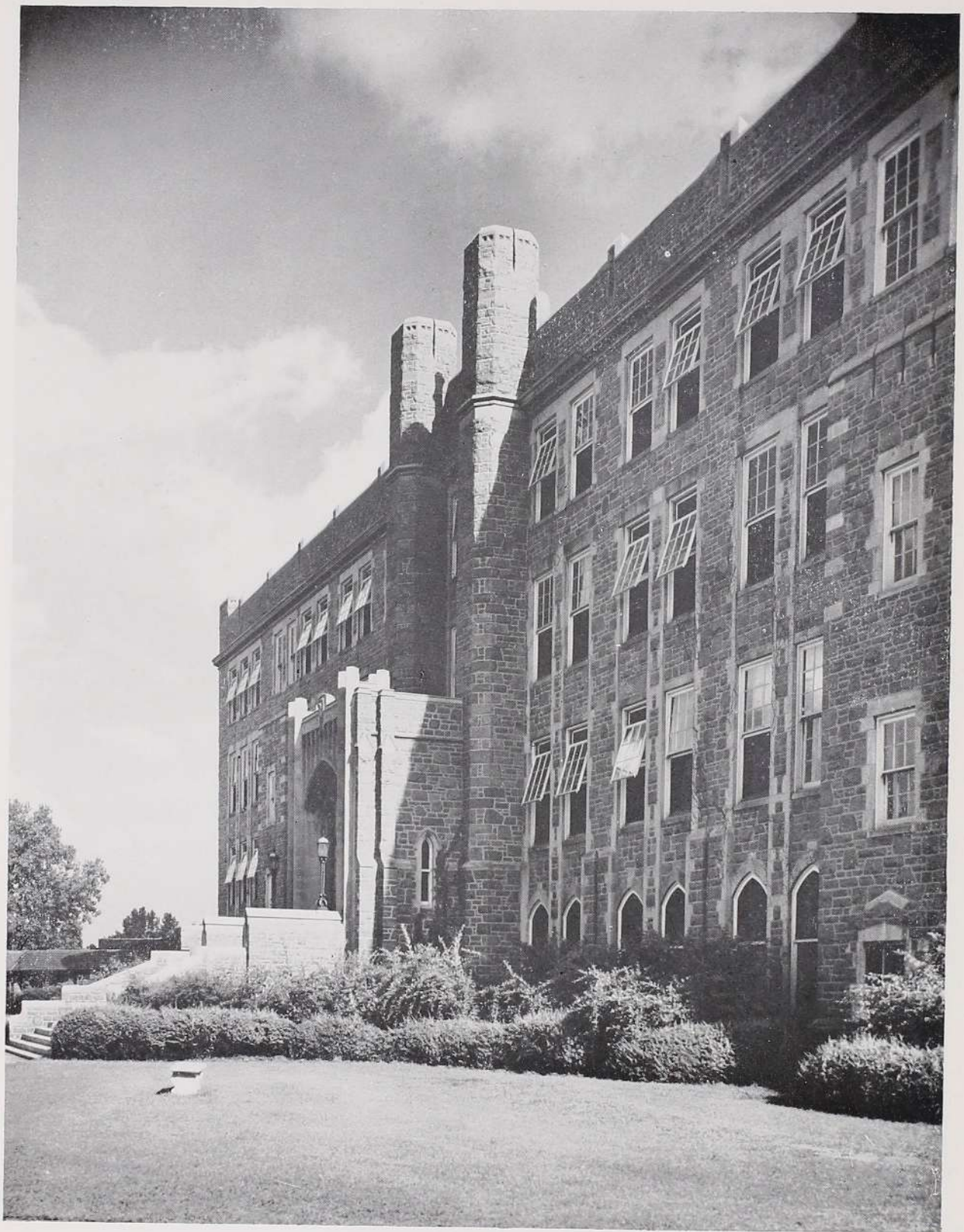


FONTBONNE COLLEGE

for Women

St. Louis, Missouri

1
9
5
3



Ryan Hall

Administration



Mother Mary Marcella Casey

| | |
|----------------------------------|------------------|
| Mother Mary Marcella Casey | President |
| Sister Teresa Martin Crowe | Dean |
| Sister Mary Teresine Lewis | Dean of Students |
| Sister Mary Hilda Lorsbach | Bursar |
| Sister Ellen Mary Cassidy | Registrar |
| Nan Shallcross Clemens | Librarian |



Sister Teresa Martin Crowe

Faculty

Religion and Philosophy

Rev. Bernard Bak, C. R.
 Rev. Ernest Braun, M. S. F.
 Sister Rita Marie Bushman
 Sister Teresa Martin Crowe
 Rev. Walter Galus, C. R.
 Sister Ann Virginia Kane
 Rev. Bernard Kramer, S. M.
 Sister Mary Eleanor Nash
 Sister Rose Anthony Schmitt

Humanities

Mr. James Ball
 Sister John Joseph Bezdek
 Sister Teresa Martin Crowe
 Sister Mary Berchmans Fournier
 Sister Mary Ernestine Fuhs
 Miss Doraldine Garcia
 Sister Mary Antone Gaydos
 Sister Madeleine Sophie Goldkamp
 Mr. Francis Kinkel

Sister Mary Victorine Klein
 Sister Mary Loretta Langendorf
 Miss Belle Marie Mullins
 Mrs. Doyne C. Neal
 Mr. Edward Ormond
 Sister Margaret John Purcell
 Sister John Marie Riley
 Miss Frances P. Troemel
 Dr. M. Isabel Winslow

Faculty

Natural Sciences

Miss Betty M. Baker
Miss Theresa M. Carmody
Sister Helen Joseph Coerver
Sister Agnes Joseph Donovan
Sister Rose Genevieve Downs
Sister Mary Teresine Lewis

Sister Mary Anselm O'Brien
Sister Catherine de Ricci Ostermann
Miss Mary F. Palmer
Sister Mary Martha Scott
Sister Mary Marguerite Sheeley

Social Sciences

Sister Ellen Mary Cassidy
Sister Joseph Aloysius Geissert
Sister Agnes Cecile Hickox
Sister Marietta Jennings
Sister Mary Hilda Lorsbach
Sister Mary Hugh McLarney
Sister Mary Eleanor Nash
Sister Ann Marita O'Loughlin
Sister Charles Marie Riefsnyder
Dr. Wm. E. Van Taay

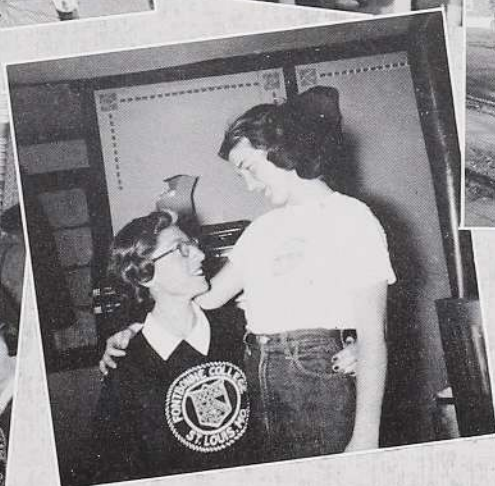


Sister Mary Teresine Lewis



Seniors Off-Guard

Seniors Off-Guard



Seniors





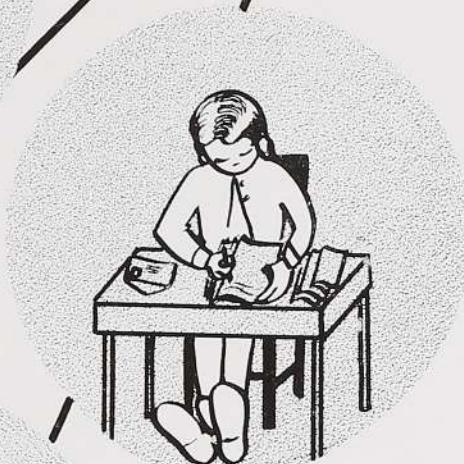
Geraldine J. Peil

St. Louis, Missouri
B. S. in Home Economics

Jean McCormack

Kirkwood, Missouri

B. S. in Dietetics



Elizabeth J. Killmade

St. Louis, Missouri
B. S. in Home Economics



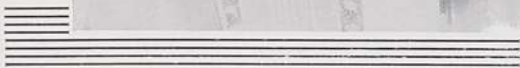
Margaret A. Lampman

St. Louis, Missouri
B. S. in Home Economics



ONTBONNE, WE LOVE YOU, YOUR PURPLE AND GOLD, WE PLEDGE OUR ALLEGIANCE, W
NE'ER SHALL GROW COLD, BUT STRONG AS THE GRANITE THAT BUILDS YOUR FIRM W.

Seniors





Louan Marienau

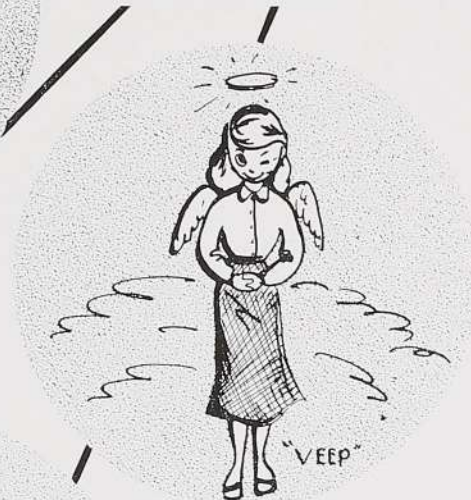
St. Louis, Missouri

A. B. in Spanish

Eileen M. Martens

St. Louis, Missouri

B. S. in Dietetics



Patricia McCarthy

St. Louis, Missouri

B. S. in Biology



Betty Marie Wyers

St. Louis, Missouri

B. S. in Dietetics



HALL LEAD US ALL GOD-WARD WHATEVER BEFALLS. IN YOUTH'S GLAD, FAIR MAY-TIM
CAME TO YOUR ARMS. YOUR LOVE HAS CARESSED US, HAS SHIELDED FROM HARMS! YC

Seniors





Alice La Bagge

St. Louis, Missouri

A. B. in English

Jacqueline Auer

Normandy, Missouri

B. S. in Education



Shirley Kiefer

St. Louis, Missouri

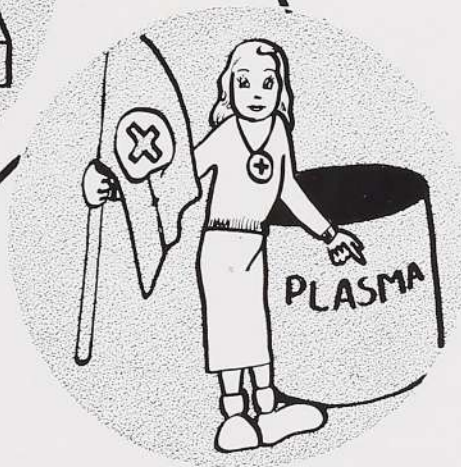
A. B. in Psychology



Iris Baker Wilson

St. Louis, Missouri

A. B. in Education

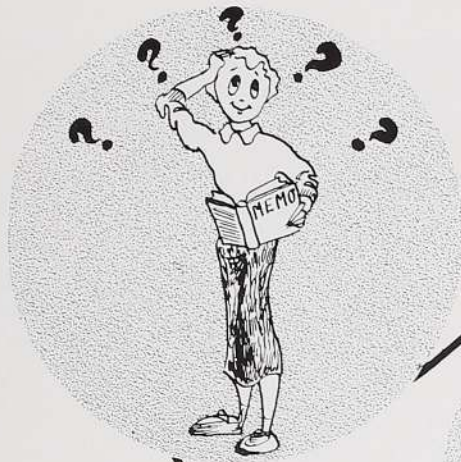


STANDARDS HAVE FORMED US, YOUR FAITH HAS INSPIRED. WE FOUND IN YOUR PORTALS
ALS WE DESIRED. O FONTBONNE, WE LOVE YOU, YOUR PURPLE AND GOLD, WE PLED

Seniors



R ALLE
S YOUR



Mary Susan Ryan

St. Louis, Missouri

A. B. in Education

Nina Leah Bartsch

St. Louis, Missouri

B. S. in Economics



Lois Knopp Tracy

St. Louis, Missouri

A. B. in Education



Joan Frances Almon

University City, Missouri

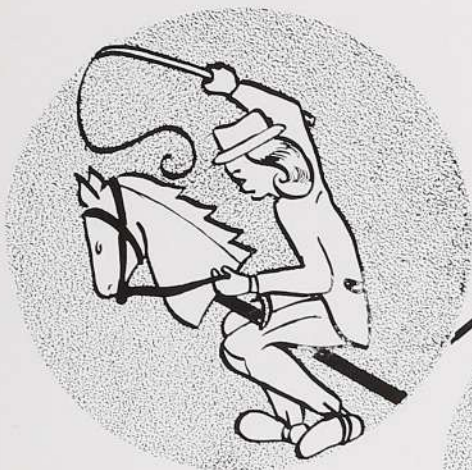
A. B. in Education



ALLEGIANCE, WHICH NE'ER SHALL GROW COLD, BUT STRONG AS THE GRANITE THAT B
YOUR FIRM WALLS SHALL LEAD US ALL GOD-WARD WHATEVER BEFALLS. IN YOUTH'S C

Seniors





Mary Ann Breher

St. Louis, Missouri

A. B. in Art

Jean Kruempelmann

St. Louis, Missouri

A. B. in Economics



Joan Nolan

St. Louis, Missouri

B. S. in Dietetics



Janet Claire Prevallet

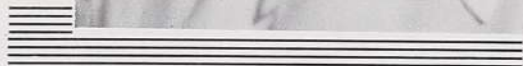
St. Louis, Missouri

B. S. in Sociology



FONTBONNE, WE LOVE YOU, YOUR PURPLE AND GOLD, WE PLEDGE OUR ALLEGIANCE, V
I NE'ER SHALL GROW COLD, BUT STRONG AS THE GRANITE THAT BUILDS YOUR FIRM W

Seniors





Mary Ann Kuhlman

Sedalia, Missouri

A. B. in Speech and Drama

Jeanne T. Heroux

River Forest, Illinois

B. S. in Mathematics



Sylvia Marie Karl

Ste. Genevieve, Missouri

B. S. in Economics



Maureen Burke

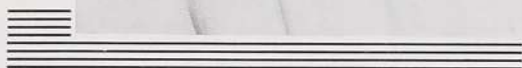
Green Bay, Wisconsin

A. B. in Mathematics



HALL LEAD US ALL GOD-WARD WHATEVER BEFALLS. IN YOUTH'S GLAD, FAIR MAY-TIM
CAME TO YOUR ARMS. YOUR LOVE HAS CARESSED US, HAS SHIELDED FROM HARMS! YO

Seniors





Eleanor Lois Kaiser

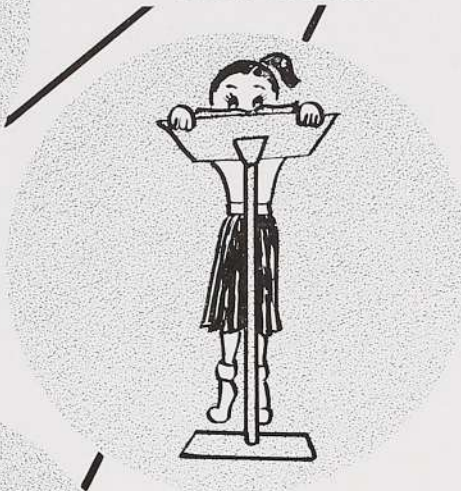
Webster Groves, Missouri

B. S. in Dietetics

Lorraine Hempen

St. Louis, Missouri

B. S. in Economics



Peggy Ann McCullin

St. Louis, Missouri

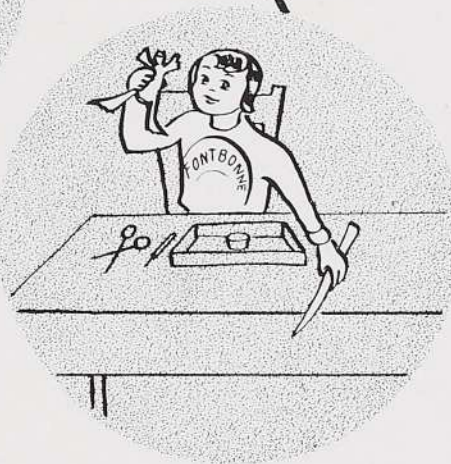
B. S. in Dietetics



Cecilia Mary Boland

New Haven, Missouri

B. S. in Biology



STANDARDS HAVE FORMED US, YOUR FAITH HAS INSPIRED. WE FOUND IN YOUR PORTALS
ALS WE DESIRED. O FONTBONNE, WE LOVE YOU, YOUR PURPLE AND GOLD, WE PLED

Seniors



DUR ALL
LDS YOU



Joan Carole Nicholson

St. Louis, Missouri

B. M. in Music Therapy

Marianne Bommer

Eldon, Missouri

B. M. in Piano



Vernice Pearl Jones

Clarksdale, Mississippi

B. S. in Dietetics



Marjorie Jane Meehan

St. Louis, Missouri

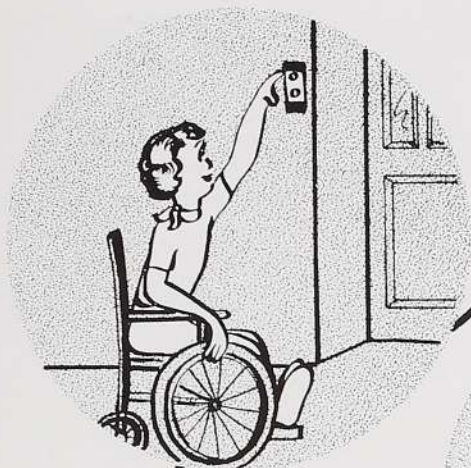
B. M. in Music Therapy



OUR ALLEGIANCE, WHICH NE'ER SHALL GROW COLD, BUT STRONG AS THE GRANITE THAT
 IS YOUR FIRM WALLS SHALL LEAD US ALL GOD-WARD WHATEVER BEFALLS. IN YOUTH'S

Seniors





Cornelia D. Rindlaub

Guthrie, Oklahoma

B. S. in Biology

Norma Jane Becker

St. Louis, Missouri

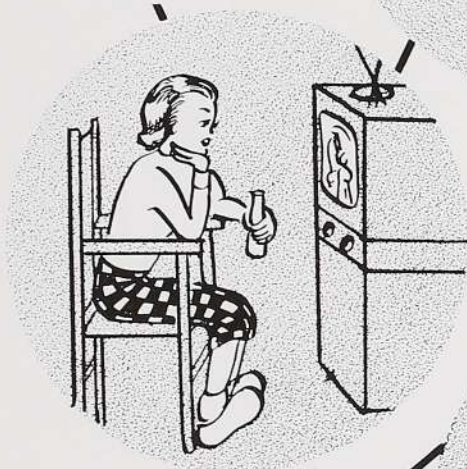
A. B. in Economics



Sue Pemberton

Marshall, Missouri

B. S. in Sociology



Dorothy Ann Monty

Clarksdale, Mississippi

A. B. in Psychology

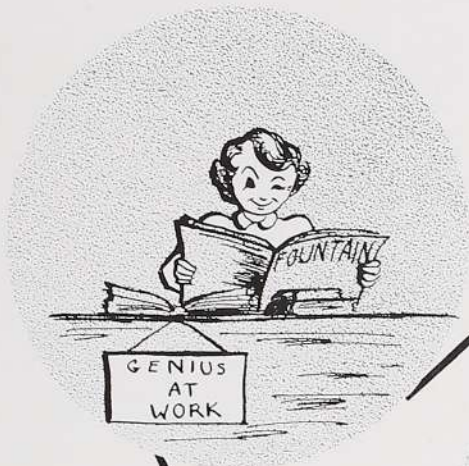


ONTBONNE, WE LOVE YOU, YOUR PURPLE AND GOLD, WE PLEDGE OUR ALLEGIANCE, W
NE'ER SHALL GROW COLD, BUT STRONG AS THE GRANITE THAT BUILDS YOUR FIRM WA

Seniors



SHALL
WE CAME



Eugenia Marie Hettel

St. Louis, Missouri

A. B. in English

Mary Lou Horn

St. Louis, Missouri

B. S. in Home Economics



Lorraine M. Schmalz

St. Louis, Missouri

B. S. in Home Economics



Sara Jane Berger

Glendale, Missouri

A. B. in English



SHALL LEAD US ALL GOD-WARD WHATEVER BEFALLS. IN YOUTH'S GLAD, FAIR MAY-TIM
CAME TO YOUR ARMS. YOUR LOVE HAS CARESSED US, HAS SHIELDED FROM HARMS! YC

Seniors





Mary Jean Bourisaw

St. Louis, Missouri

B. S. in Education

Doris Mae Lavin

St. Louis, Missouri

A. B. in Speech and Drama



Mary T. Clasquin

University City, Missouri

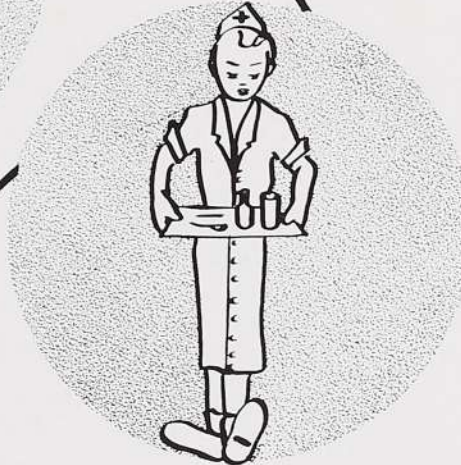
A. B. in Education



Ann M. Boland

New Haven, Missouri

B. S. in The Family



STANDARDS HAVE FORMED US, YOUR FAITH HAS INSPIRED. WE FOUND IN YOUR PORTALS
 WE DESIRED. O FONTBONNE, WE LOVE YOU, YOUR PURPLE AND GOLD, WE PLED

Seniors





Mary Lee Curatto

Richmond Heights, Missouri

A. B. in Sociology

Helene D. Kohner

St. Louis, Missouri

B. S. in Art



Patricia McNamee

Webster Groves, Missouri

A. B. in Psychology



Beverly Broderson

St. Louis, Missouri

B. S. in Sociology



ALLEGIANCE, WHICH NE'ER SHALL GROW COLD, BUT STRONG AS THE GRANITE THAT B
YOUR FIRM WALLS SHALL LEAD US ALL GOD-WARD WHATEVER BEFALLS. IN YOUTH'S

Seniors





Barbara Brinkoetter

Decatur, Illinois

B. S. in Economics

Dolores Anne Baltz

Pocahontas, Arkansas

B. S. in Dietetics



Rosemary Cosgriff

Jacksonville, Illinois

B. S. in Economics



Peggy Wardein Wegener

Alton, Illinois

B. S. in Economics



ONTBONNE, WE LOVE YOU, YOUR PURPLE AND GOLD, WE PLEDGE OUR ALLEGIANCE, W
NE'ER SHALL GROW COLD, BUT STRONG AS THE GRANITE THAT BUILDS YOUR FIRM WA

Underclassmen Relaxed





Underclassmen Relaxed

JUNIORS

Juniors

blasé

oh where



CLASS OFFICERS
Left to right: V. Hovious, president; A. Christen, vice-president; D. Witte, secretary; E. Strattmann, treasurer.



Left to right: M. A. Buhr, V. Cothran, M. J. Keel, R. Reynolds, P. O'Toole.



Left to right: M. Zitt, S. Leontsinis, J. Nowak, M. Pautler, H. Mayer.



Left to right: J. Charlier, S. Burnes, D. Lynch, A. Rischbieter, J. Bianchi.

where

where

Juniors — they

got out



Left to right: J. Gossin, P. Gallagher, W. Winkins.



Left to right: A. Simon, J. Robey, S. Reising, T. DeLisle, A. Suetsugu.



Left to right: B. Hess, M. N. Ryan, J. Phillipp, J. Schock, J. Burris.

Meta physics

Meta physics

out of



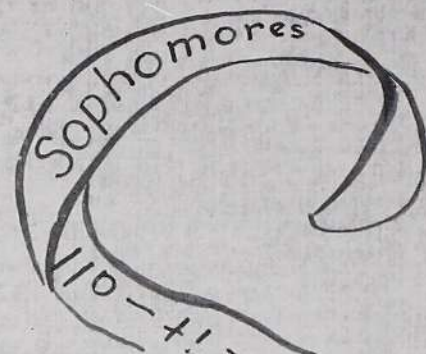
Left to right: M. Zwislser, D. Gibbons, M. K. O'Gorman, N. Raupp, K. Madras.



CLASS OFFICERS

Left to right: S. Leach, secretary; M. C. Reinhardt, treasurer; K. Gunn, vice-president; M. Teasdale, president.

SOPH



Left to right: J. Auer, R. A. Reily, M. Downey, J. Gantner, A. Moore, E. Hogan, J. Maschmann.



Left to right: G. Schmalz, M. Wyers, D. Nesslein, J. Curry, C. Ditenhafer, M. Hoppe, M. Kelly.

KNOW

Sophs



Left to right: J. Carter, M. L. Maddox, N. Murphy, C. Lewis, J. Hogan.



Left to right: L. George, S. Brussman, E. Ulrich, F. Spack, B. Jones.

Sophs

KNOW-IT

Where oh where are the

SOPHOMORES

Sophomores

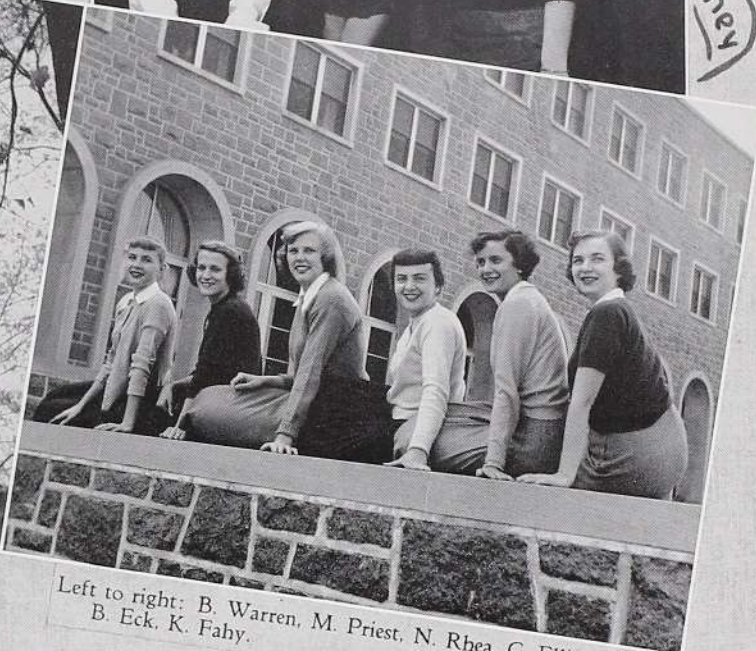
Left to right: R. Sheahan, M. Vassely, J. Wilt, B. Buckman, N. Cracraft, M. Manning.



they



Left to right: E. Stagoski, J. Rutkowski, P. Degnan, M. Doherty, J. Trampe, L. Frisch, J. Bielick.



Left to right: B. Warren, M. Priest, N. Rhea, C. Elliott, B. Eck, K. Fahy.

90+



Left to right: A. Gunther, B. Potter, M. Piscitella, M. Bell, C. Ellis, D. Huber, G. Crockett.



Left to right: E. Haynes, J. Hillner, D. Lee, P. Burke, A. Croker.

1 b Humanities

out of 1 b HU

FRESHMEN



CLASS OFFICERS

Left to right: C. Troilo, secretary; R. Hess, president; A. Thebeau, treasurer; C. Hennigan, vice-president.



Left to right: M. A. Hughes, M. A. Pugh, N. Haar, J. Maret, D. McCullom, M. Moonier.

Left to right: P. Goebel, D. Rutten, C. Machuca, D. Ensenger, D. Lopez.



Where
are the



Left to right: J. Klemeyer, M. Drake, J. Dawson, P. Coonan, M. McDowell.



Left to right: L. Shalhoub, C. Fritsch, P. Cox, P. Austin, J. Dotzman, M. V. Galleano.

peagreen

Freshmen

peagreen

H MEN

they
got out
of



Left to right: A. Malone, M. Hanlon, M. Gef-
fen, M. Zickel, L. Tracy.



Left to right: M. A. Soell, N. Ahlert, B. Ness-
lein, C. Barbara, A. Podolski.

KINKEL'S English

Kinkels
english



Left to right: C. Saleh, B. Reese, M. A. Jacobi, A. Rossie,
C. Dent.



Left to right: M. A. Brys, J. Czarniecky, J. Murphy, J.
Miller, J. Phegley, S. McCormack.

out of

KINKEL'S

english



Left to right: E. Hennigan, P. Maier, B. Meyer,
P. Rallo, R. Millman.

FRESH

peagreen FRESHMEN

here oh where
are
the



Left to right: J. Springman, M. Grob, P.
Polizzi, A. Thebeau, M. Bransford, P.
Huesmann.



Left to right: K. Boyle, N. Litteken, J. Mound,
M. Cunningham, A. Dunsing.



Left to right: N. Garcia, A. Campanella, E.
Garza, C. Barbara, A. Clark, N. Garza.

peagreen

Freshmen

H MEN

they got out of Kinkel's English



Left to right: J. Olivastro, R. Ahlert, J. Kiely, M. H. Monahan, B. Bryant.



Left to right: L. Borman, J. DeGroot, M. Stocking, S. Schmitz, M. Fleming.



Left to right: J. Coffman, S. Harvey, P. Hoshbach, P. Bianchi, M. Adams.



Left to right: B. Schulte, M. Ely, M. Toenjes, M. A. Rademaker, F. Mar.



Left to right: S. Walsh, E. Young, M. A. Wagner, C. Richmond, G. Whitfield, C. Clement.

they got



Candidly Speaking

Candidly Speaking



A Gallery of Fontbonnets



Bucking to make the team.

Musician — a-practicing.



The embalming fluid on nights in
January and May

Gee, science is wonderful.



The boarder who is typical.

The student who is not.



Under the influence of Manet.

A look towards the future?

Years from now

what will you remember about the school year of 1952-1953?

Will it be Angie's coffee, so eye-opening at 8:15 a.m., the toot of Dr. Van Taay's car horn "summoning the lax," or the blue and white blazers from Famous-Barr?

There were Fontbonne's own Miss Missouri, the Sodality's new modernistic statue in the horseshoe, and the smell of paint in Ryan's crowded halls during retreat. And will anyone forget the steady tattoo beat of those energetic tuck-pointers and their ever-working air hammers? The two semesters were marked by warm classrooms, a table of Spanish-speaking freshmen, few—few juniors, and those confusingly identical twins. Rehearsal notices for the musical were chalked on a tiny call board, den duty was lightened for the second semester, and the bonfire pep rally was bonfireless. Underclassmen were haunted by the insistent beat of the modern dance drum, and Humanities Art students looked at colored slides and visited the Art Museum. The freshmen, still trying to spell Medaille, gave a Sleigh Belle Ball there. Assemblies featured a member of the British Embassy, a

harp and cello concert, Mr. Ball's outstanding program, and a GM demonstrator who broke a glass with sound.

The traditional "Anybody going up to the library?" echoed through Ryan, along with "Anyone for bridge?" As usual, the parking lot was crowded, that overnight book was overdue, and the chairs in the auditorium were exceedingly hard. The inevitable term papers and theses didn't disappear. Every first Friday, neat little "Caps and Gowns, Heels and Hose" signs appeared as a reminder. For the seniors, Key Day finally came, the comp was taken, and that glorious, long-prepared-for Commencement Day loomed on the calendar.

The spirit that is Fontbonne came out 100% behind "Bombshells in Blue," Fontbonne's first homegrown musical in several years. It took work, many combined efforts, and long hours of practice, plus vital faculty cooperation, to produce a successful piece of self-expression by Miss Fontbonnet. Cast members were identified by the luggage under their eyes. The uniforms were borrowed from Scott Field. And Mother Marcella sent a message of congratulations.

S. G. A.

To the average girl at Fontbonne, the Student Government Association means more than one assembly period each month. It means a voice in self-government, and the right to speak her mind through elected class representatives.

The Student Council is that quiet and efficient organization whose meetings furnish the material for those neatly typewritten secretary's reports thumbtacked periodically to the Ryan bulletin

board. These reports are the minutes of the meetings which occur weekly, Judge Hempen presiding.

The Student Council gets credit this year: 1) for that cool green paint job in the den which covered up forever those time-worn animals; 2) for the secondhand bookstore; and 3) for the patient repetition of "No breaking in line in the caf."



Front Row, Left to Right: Joan Almon, Dolores Baltz, Janie Bianchi, Rosemary Cosgriff, Mary Ellen Zwislner, Doris Gibbons, Nancy Raupp, Elle Kaiser, Lorraine Hempen, Sue Ryan.

Back Row, Left to Right: Joan Maschmann, Nancy Haar, Rosalie Millman, Kathy Madras.



Nancy Raupp, Treasurer; Eleanor Kaiser, Vice-President; Lorraine Hempen, President; Sue Ryan, Secretary.

College Day

Left to Right: Mary Ellen Williams, JoAnn Smith, Kathy Boyle, Phyllis Rallo, Maureen Cunningham, Eloise Raftery.



Remember the queer stares you got driving home in a decorated car after the College Day parade? And the dressed-up look in the caf, with the tables "tableclothed" for brunch?

Left to Right: Peggy Murphy, Lucy George, Sue Burnes, Jean McCormack, Carolyn Lewis, Nancy Cracraft, Claire Hess, Elle Kaiser, Jerry Peil, Mary Lou Maddox, Joan Nolan.



"Anybody have any Scotch tape?" sounded familiar. So did "My cap's too large and my gown's too small."

And there was gray chatter-filled "Didja see so-and-so?" Carondelet, peopled with black gowns and habits scurrying over inlaid wood



Left to Right: Janet Prevallet, Claire Hess, Marianne Bommer, Nancy Rhea.

floors to drink cokes and eat doughnuts. And you didn't forget the skits, the noisy horn-blowing, and the lovely singing at Benediction, did you?

Decorated cars in parking lot.





Directors

Seated: Bunn Hess, Elle Kaiser.

Standing: Pat Gallagher, Joyce Maret.

Leads

Dot Monty, Joan Bielicke, Mary Jean Bourisaw, Helene Kohner, Flo Mae Spack, Bev Warren.

Stage Crew

Standing: Sue Ryan, Anastasia Christen, Doris Gibbons, Dolores Baltz, Joan Almon, Dolores Witte, Sue Burnes.

Seated: Mary Ellen Zwislner, Nancy Raupp, Mary K. O'Gorman.

Seated: Nancy Haar, Mary Toenges, Dot Monty, Bev Broderson.

Standing: Rosemary Cosgriff, Carolyn Lewis, Sue Leach, Mimi Drake, Joan Bielicke.

Bombshells In Blue

From summer conferences for the writers until the last performance in February, the idea dominating all connected with *Bombshells in Blue* was "This has got to be good."

The plot concerned a wacky bunch of new WAFs, one of whom was Rhonda Nilats, a Commy spy, and how, through the efforts of shy Sophie Grey and the CO, she was finally caught and captured.

Bombshells In Blue

The popular "You're in the Army Now" and "Oh, How I Hate to Get Up in the Morning" helped set a proper atmosphere. So did a number of original dances, with principal applause going to a pulsating African number and a clever rag mop.

Cast

Front Row: Mary Ann Pugh, Sylvia Karl, Bev Broderson, Marietta Grob, Juanita Inabnit, Mary Clasquin, Helene Kohner.

Second Row: Joan Springman, Lois Borman, Flo Mae Spack, Genie Hettel, Maureen Stocking, Mimi Drake, Rosemary Cosgriff.

Standing: Bev Warren, Pat Degnan, Pat Carter, Joan Bielicke, Dot Monty, Nancy Rhea, Mary Jean Bourisaw.

Left to Right: Bev Warren, Maureen Stocking, Margaret Bransford, Joan Springman, Helene Kohner, Joan Bielicke, Flo Mae Spack, Dot Monty.

Bev Warren, Gerry Schmalz, Dot Monty.

WAF's in formation at graduation.





Mary Lee Curotto, Betty Wyers, Anna Suetsugu,
Ann Simon, Lillian Yoshimoto.

Sue Brussman, Pat Degnan, Mary Helen Monahan,
Joyce Maret.

Ginnie Hovious, Sue Leach, Carolyn Lewis, Pat
Huesmann, Lorraine Hempen, Pat Gallagher.

Entire cast.

Bombshells In Blue

Lots of credit went to Director-in-chief Bunn Hess, Dance Director Joyce Maret, Chorus Director Pat Gallagher, to the dramatic leads, and to everyone who got out and sold enough tickets to fill the aud three successive nights.

Christmas Party

Many favorable comments attested to the success of the faculty-student Christmas party, December 16, in the Ryan Den, because the Christmas spirit was there.

Coke, seven-up, and popcorn were served at the event which was sponsored by the Student Council. A large lighted tree, red cellophane rope well tinselled, snowflaked and silhouetted

doors and windows, and the crib scene painted on the mirror served as decorations. Remember the poem, "Lovely Lady Dressed in Blue," the carolers, the nun's quartet? And a jolly Santa Claus who distributed gifts to the faculty members and then led all in community singing? Credits to Mary Ann Kuhlman, Nancy Raupp and Sue Ryan who arranged the party.

Back Row: Father Galus, Father Janos, Mr. Kinkel, Miss Carmody, Santa, Miss Troemel.

Front Row: Dr. Winslow, Mr. Ball, Miss Palmer, Miss Baker, Miss Clemens.



Christmas party in den with Santa distributing gifts.



As Humanities students trudge up to the second floor of Fine Arts to the accompaniment of conflicting tones produced by the Music Department, on the third floor budding artists are setting up their easels and paints. The essence of

and Locations



burnt sulphur on first floor Science gives a clue to the classes held there, and on the third floor, the new kitchens are the pride and joy of the Home Economics Department.

A boarder's life is filled with demanding bells (too few of which are on telephones), the ever-approaching sound of Sister Teresine's footsteps in the hall, and overly loud radios. It's a continuous line waiting for the always-looked-for late permission or for an ironing board right before a formal dance. It's hall duty. It's Wednesday night dress dinners.

There is the bad luck of being caught in a gabfest after hours in someone else's room, the 7:30 curfew on the TV set on week nights, 10:30 lights out for underclassmen, and the effort to keep the room clean enough to pass inspection. Always present is the joker who locks you out, or who re-arranges your room while you're gone, or who pushes all the buttons to make the elevator wander when you must rush to an 8:30 class.



Resident Student Officers

Mary Ann Kuhlman, President, resigned; Dolores Baltz, President; Jeanne Heroux, Treasurer; Sue Pemberton, Secretary.

On telephones: Carolyn Lewis, Ninfa Garza, Elma Garza, Barbara Eck.

Resident's Chapel.

Left to Right: Mary Ann Kuhlman, Peggy Wardein Wegener, Barbara Brinkoetter, Pat Coonan, Bev Warren, Jackie Dawson.

Life in Medaille



Front Row: Marilyn Bell, Pat Goebel, Barb Eck.
Seated at Table: M. A. Kuhlman, P. Hosback,
B. Brinkoetter, R. Cosgriff, P. Wegener, D.
Baltz, J. Heroux, C. Rindlaub, M. Burke,
M. A. Bommer, S. Pemberton, S. Harvey,
J. Kaufmann.

Kathy Fahy's Prize Room

Front Row: Ann Simon, Kathy Fahy.
Back Row: Rita Sheahan, Jeanne Phillipp, Mau-
reen Manning.

Diana Lopez, prize-winner for best decorated
room.

Seated: Kathy Fahy, Dolores Huber, Carolyn
Lewis, Bernadette Buckmann, Thelma De
Lisle, Shirley Reising, Ann Simon, Carolyn
Saleh.

Back Row: Joan Springman, Bev Warren, Caro-
lyn Ellis.

Boarders are peren-
nial borrowers, al-
most always sup-
posedly starving, and
always anticipating
mail. Life in Medail-
le involves the ability
to scramble success-
fully for the Sunday
comics, and to rise
smiling at 5:45 a.m.
when carolers yodel
sweetly at the door
even though packing
for the Christmas va-
cation was concluded
only three hours ear-
lier. Two newspapers
now wander daily in-
to the den, and it has
yet to be discovered
whether a coke is 5c
or 6c.

Boarders must be
adept bridge players,
better - than - average
knitters, and excellent
coffee and popcorn
makers. For them
each fall is a confu-
sion of new accents
and dialects, and each
week is a new punch
lunch card. They en-
joy, besides mail, the
Christmas p a r t y in
Medaille, the trans-
portation offered by
condescending d a y -
hops, and most of all,
vacations.



Sodality Officers

Betty Wyers, Vice-Prefect; Pat O'Toole, Secretary-Treasurer; Eileen Martens, Prefect; Louan Marienau, Vice-Prefect.

Represented Other Schools: Pat Gallagher, Mimi Teasdale.

Fontbonne's Representative: Doris Gibbons.

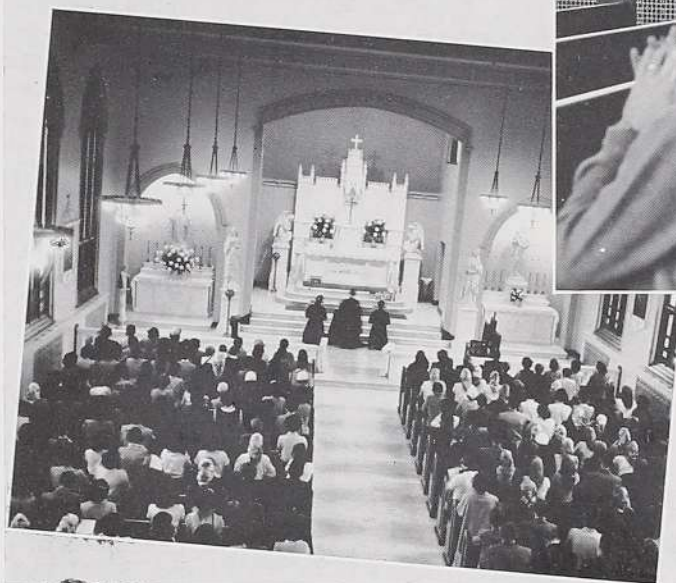
Sodality Fall Festival Booth.

The Sodality of our Lady continued "to promote your and your neighbor's personal sanctification." Meetings were held four times a month to help that aim. A particular project this year was the recitation of a perpetual rosary during Lent.

Three Fontbonne Sodalists competed in the Sodality Union's Fall Festival. Others distri-

buted the First Friday attendance slips and arranged for the monthly Holy Hour speakers.

All of the members cooperated in fixing baskets of food for the poor at Christmas and in decorating St. Joseph's altar on College Day. Socially they met every now and then in the Alumnae Room in Medaille and sponsored a St. Patrick's Day Dance.



Chapel with open doors.

Congregation at benediction by Bishop Helmsing.

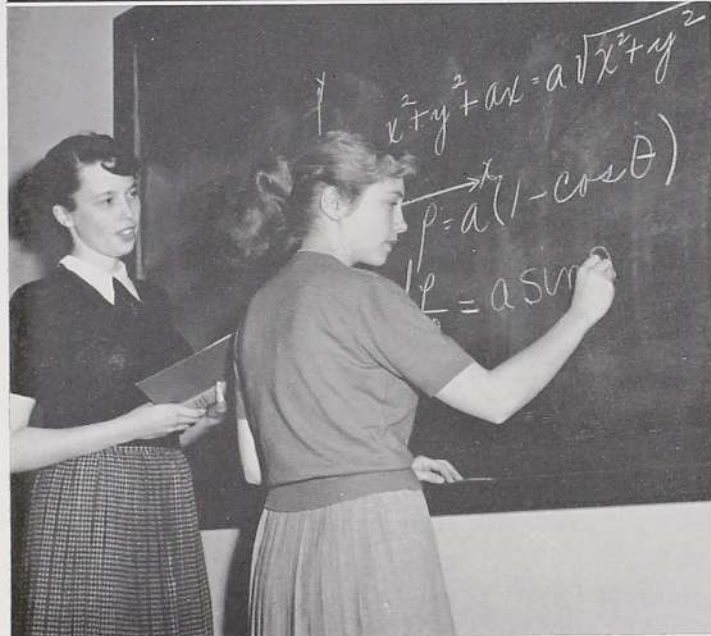
Retreat Master: Father James Birch, O.S.M.

In Pews: Nadine Ahlert, Betty Nessler.
Standing: Catherine Ditenhafer.

About four hundred young women from various parishes, high schools, colleges, and nursing schools participated in Fontbonne's second Marian Day to honor the Blessed Mother. And it was a servant of Mary, a Servite father, Father James Birch, who gave the retreat this year.

The corridors and caf were strangely silent, and small pamphlets were strewn about on a table beneath the Ryan bulletin board. Vitamin pills of prayers prescribed once daily were pulled

out of capsules, and the lines for confession were long. At the entrance to chapel, printed sheets were distributed before conferences. Magnificent bouquets stood on the altar. Religious posters encouraged everywhere. A group rosary was recited at noon. The clatter of high-heeled shoes was heard on two of the three days, and time in between was spent in spiritual reading on the den chairs temporarily crowding the halls. And what a noisy exit after the final Benediction and "Holy God"!



In Ryan Hall, the smoke-filled Den is conveniently near the typing room, but four floors beneath, the library. The information room, switchboard and lay faculty room are part of the second floor, along with the mahogany row of

and Locations



the administration. The ever popular caf regularly doubles as registration room. Physical education students dressed in neat white shorts commute often between the tennis court and the swimming pool.



Maureen Burke and Donna Rutten with escorts.

Seniors at Freshman Dance.

Eleanor Hennigan, Pat Coonan, Catherine Hennigan with their escorts.

Sleighbelle Ball

With "bells, bells, bells" the freshmen brought out the theme of their Sleighbelle Ball. Medaille Hall was really decked out and each arriving guest was greeted with the sight of an old-fashioned sleigh as she came into the building that evening. More awaited her, for there was at each end of the ballroom a curtain of streamers with bells attached.

Another memory that is not easily forgotten is the decorations of the Alumnae Room, where miniature sleighs were used as candle holders on each table and where wonderful buffet tables welcomed with punch bowl and cheese balls.

Staffs

The picture of *The Fontbonne* staff does not recognize all the people who helped put out this issue of the yearbook. But that honor may be distributed where due, add these names as willing hands: Nadine Ahlert, Joan Bie-licke, Mary Jean Bourisaw, Maureen Burke, Jo Burris, Joanne De Groot, Kathy Fahy, Claire Hess, Jean Kruempelmann, Betty Nesslein, Arden Rischbieter, Cornelia Rindlaub and Rita Sheehan.

And thanks, too, to those who solicited sponsors, patrons and snapshots.

Criticism, revision, and polish are the ingredients of a formula for *The Fountain*, Fontbonne's literary magazine. At staff meetings, such things as the cover design and color, the times of publication, the size of print, the number of articles, and other behind-the-scenes details are considered and decided upon.

Font Staff

Marie Fleming, Feature Editor; Mary Ann Jacobi, Associate Editor; Jeanne Phillipp, Editor; Peggy Pautler, Managing Editor; Advisor, Sr. Margaret John.

Yearbook Staff

Helene Kohner, Artist; Jeanne Heroux, Photo Editor; Peggy Pautler, Feature Editor; Kathleen Madras, Business Manager; Mary Ann Breher, Editor; Doris Nesslein and Margie Kelly, Artists; Advisor, Mr. Francis Kinkel.

Fountain Staff

Front Row: Joan Carter, Sue Leach, Nancy Craft, Gennie Hettel, Editor.

Back Row: Helene Kohner, Art Editor; Marianne Bommer, Mary Ellen Zwisler, Jeanne Heroux; Advisor, Sr. Mary Loretta.

"Font staff meeting, Fine Arts 214."

That's the monthly invitation to a staff meeting. At these short gatherings, assignments are made and due dates set. "What can we have a picture of?" "How can we sell more ads?" Answers to those questions result in readable issues, as do good features, up-to-date reporting and catchy heads.



Homecoming Dance

Homecoming — three days pleasantly filled with activities.

The Pep Rally began it all. There was no bonfire to warm everyone on that chilly Thursday evening, but that did not daunt the enthusiasm in the sophomore "style" show and the junior "tappers."

The College Dance on Friday was highlighted by the crowning of Queen Lorraine, the Senior candidate. Lorraine, with her court, led the Homecoming parade Saturday morning prior to the card party that afternoon.

Other memories of Homecoming: the tables in the Alumnae Room, the High School snake dance, the pies for Saturday night supper.

Queen, Lorraine Schmalz.

Queen with Attendants

Rita Sheahan, Jean McCormack, Lorraine Schmalz, Jeanne Phillipp.

In Front: Phyllis Rallo.

Ginnie Hovious, Dot Monty, Bunn Hess, Pat Gallagher.

Homecoming Dance.



Penny Circus

One of the largest crowds in Penny Circus history watched retiring Queen Mary Kay O'Gorman crown Susie Burnes as her successor for 1952. For the second consecutive year the Juniors succeeded in electing their candidate over close sophomore competition.

Additional memories of the 1952 Penny Circus: who will forget how overly short the ceiling decorations were? Or the chili supper served for the decorators of the booths? Or the gym floor the morning after, littered with crepe paper and popped balloons? Turtles had to be adopted or given away. And some of the clean-up crew commented for another time on the originality of the Music Club's freak show and the Water Ballet. Still others preferred the Penny Guess and the Pilgrim's Progress booths.



Sue Burnes, Queen.

Queen and Attendants

Left to Right: Ann Moore, Mary Ann Breher, Sue Burnes, Mary Kay O'Gorman, Betty Nesslein.



Left to Right: Marjorie Meehan, Pat Huesmann, Joan Springman, Mary Ann Brys.

Mary T. Clasquin, Sue Ryan, Jane Berger, Mary Jean Bourisaw, Louan Marienau, Jean McCormack, Pat McCarthy.

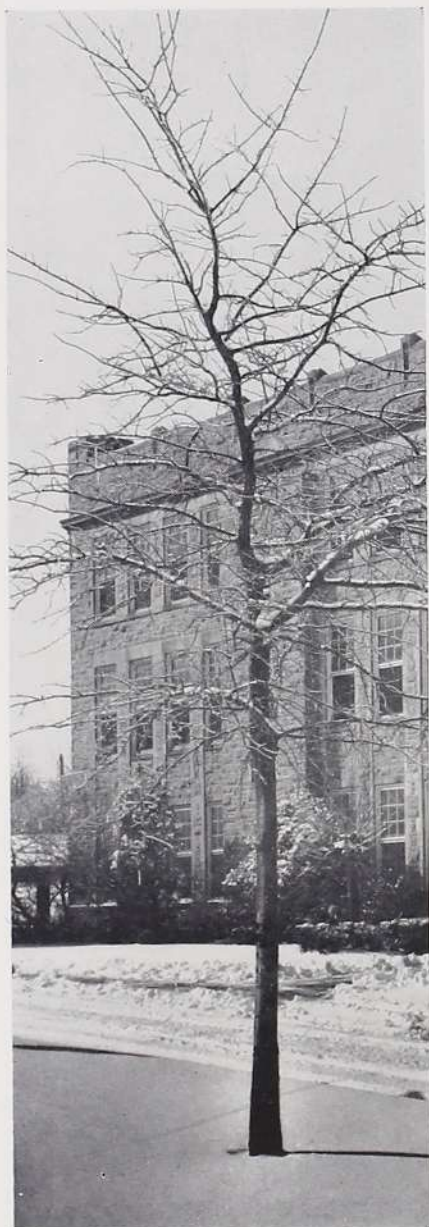


Senior Honors

ALUMNAE HOOD

*to the graduate outstanding in scholarship,
leadership and loyalty.*

JEAN MCCORMACK



Science Building

KAPPA GAMMA PI

desirous of character, scholarship, leadership

LOUAN MARIENAU
MARIANNE BOMMER
LOIS KNOPP
SHIRLEY KIEFER

DELTA EPSILON SIGMA

desirous of character, scholarship, leadership

MARY ANN KUHLMAN
LORRAINE HEMPEN
MARY THERESE CLASQUIN
DOROTHY JEAN KRUEPELMANN

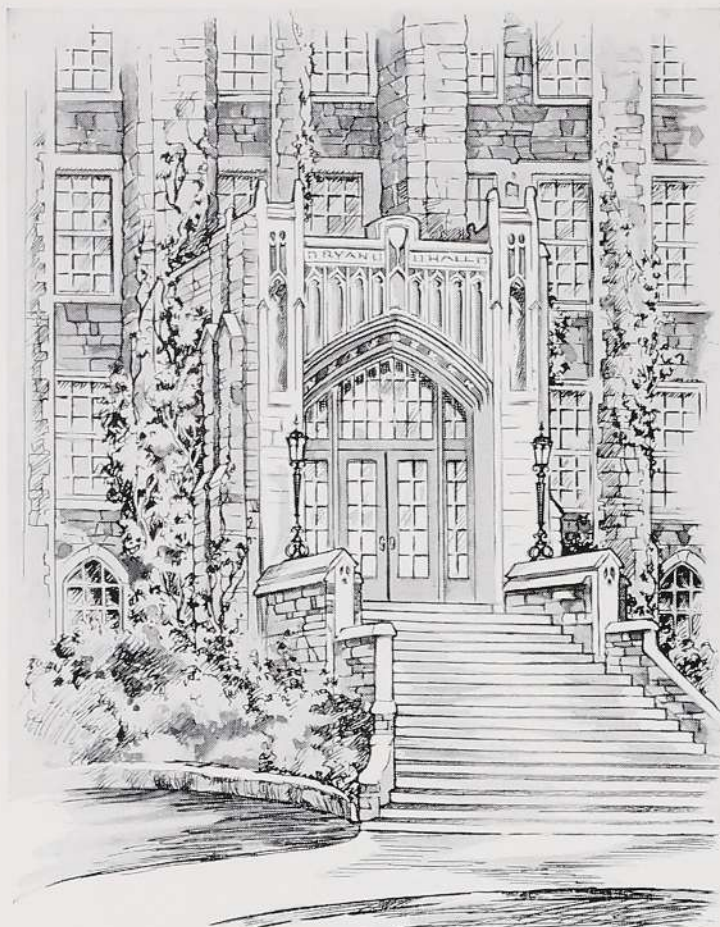
Alta Zuast

PRESENTS

most photogenic senior



Joan Nolan



FONTBONNE COLLEGE

Sponsors

Bader's
1112 Locust Street

Becktold Binding Company
2705 Olive Street

Brams Famous Brand Shoes
7811 Forsyth Avenue

Energy Petroleum Company
2130 Kienlen Avenue

Fathers' Club of Fontbonne College

P. D. George Paint Company
5200 N. Second Street

Mr. and Mrs. E. G. Hanlon
5034 Durant Avenue

Hess and Culbertson Jewelry Com-
pany
826 Olive Street

Pauline Klasing, Florist
7715 Clayton Road

Lake Forest Pharmacy
7801 Clayton Road

Joe Lennemann Inc.
5825 Delmar Avenue

Monti Jewelry Company
529 Arcade Building

Mothers' Club of Fontbonne College

The Parkmoor
6737 Clayton Road

Sigma Rho Tau Sorority

Shattinger Music Company
812 Olive Street

Suburban Motors, Inc.
Kirkwood and Manchester Roads

Tobin Jewelry Company
315 Arcade Building

Wiese-Barnes Printing Company
2129 Pine Street

Mr. Herb Weitman, Photographer

Welek's Fabrics
Downtown and Clayton

West End Pontiac
8025 Maryland

W. K. Woods Stationery Company
209 N. 4th Street

Patrons

Mrs. Buena V. Ahlert
Ajax Corrugated Box and Paper
Company
Mr. and Mrs. D. J. Almon
The Misses Jacqueline and Joy
Ann Auer
Mr. and Mrs. Reno E. Auer
Mr. and Mrs. M. C. Baker
Mr. and Mrs. E. L. Bartsch
Dr. and Mrs. A. J. Bell
Mr. and Mrs. L. F. Berger
Mrs. Charles Bianchi
Miss Janie Bianchi

Mr. Chas. Bianchi
Miss Patsy Bianchi
Mr. and Mrs. Stanley A. Bielicke
Mr. and Mrs. John Boland
Mr. and Mrs. Roland Borman
Mr. and Mrs. Leo A. Bourisaw
The Misses Rachel and Aurelia
Bourisaw
Mr. and Mrs. E. W. Breher
Miss Mary Ann Breher
Mr. and Mrs. Samuel Broderson
Mr. and Mrs. T. J. Brown

Mr. and Mrs. Julius M. Buckman
Mr. and Mrs. John R. Buhr
Mr. and Mrs. Dan Burke
Mr. and Mrs. R. E. Burke
Miss Sue Burnes
Miss E. E. Carpentier
Miss Nancy Carter
Mr. and Mrs. William Charlier
Mr. and Mrs. Andrew L. Clasquin
Miss Rosemary Cosgriff
Miss Nancy Cracraft
Miss Agnes Ann Croker
Mr. and Mrs. Cunningham
Mr. and Mrs. A. Curotto



Gymnasium



Medaille Hall

Patrons (Continued)

Mr. and Mrs. J. M. Curry
 Mr. and Mrs. Jos. H. Czarnecky
 Mr. and Mrs. L. P. Degnan
 Miss Pat Degnan
 Mr. and Mrs. August T. DeGroot
 Miss Lois DeGroot
 Mr. and Mrs. John A. Ditenhafer
 Mr. and Mrs. Erwin D. Dotzman
 Miss Janis Marie Dotzman
 Mr. and Mrs. Francis Downey
 Mr. and Mrs. Karl J. Eck
 Miss Dot Ensenberger
 Mr. and Mrs. Patrick J. Fahy
 Fontbonne Glee Club
 Mr. and Mrs. Harry Frisch
 Mr. J. J. Fritsch

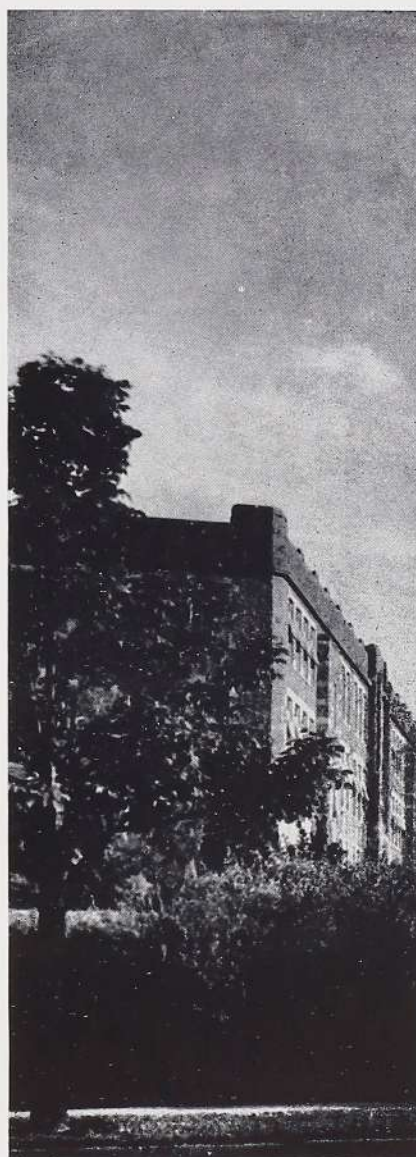
Miss Pat Gallagher
 Mr. and Mrs. V. G. Gantner
 Mr. and Mrs. Samuel P. Geffen
 Mr. and Mrs. F. L. George
 Mr. Edward P. Gibbons
 Mr. and Mrs. Clarence A. Grob
 Mr. and Mrs. Donald Gunn
 Mrs. Marie Haar
 Mr. and Mrs. J. H. Hempen
 Mr. Francis A. Hennigan
 Mr. and Mrs. Leonard Hess
 Mr. and Mrs. M. J. Hettel
 Mr. and Mrs. M. P. Hogan
 Mr. S. E. Hogan
 Mr. and Mrs. W. H. Hoppe, Jr.
 The Misses Marlene and Barbara
 Hoppe

Patrons (Continued)

Mr. and Mrs. M. Horn
 Mr. and Mrs. Louis Hovious
 The Kaiser Family
 Miss Margie Kelly
 Mr. and Mrs. John L. Klemeyer
 Mrs. John Kiefer
 Mr. and Mrs. L. A. Knopp
 Mr. and Mrs. A. N. Kohner

Mr. and Mrs. J. Kruempelmann
 Miss Jean Kruempelmann
 Mr. and Mrs. C. C. Lampmann
 Mr. and Mrs. Andrew B. Leach
 Mr. and Mrs. Joseph Lee
 Mr. Emanuel Leontsinis
 Mr. and Mrs. M. W. Lewis
 Mr. and Mrs. Louis C. Lochmoeller

Mr. and Mrs. John T. Lynch
 Lt. Col. and Mrs. John F. McCarthy
 Lt. Dorothy I. McCarthy
 Mr. and Mrs. John McCormack
 Mr. and Mrs. Wm. J. McCormack
 Mr. and Mrs. Francis H. McDowell
 Dr. O. J. McNamee
 Miss Jonnie McNamee
 Capt. and Mrs. Charles W. Maddox
 Mr. and Mrs. J. Madras
 Miss Joyce Maret
 Mr. and Mrs. Wm. C. Maret
 Mr. and Mrs. L. F. Marineau
 Mr. and Mrs. Charles Martens
 Mr. and Mrs. H. J. Maschmann
 Miss Jeanette Maschmann
 George Mayer Family
 Mrs. Eleanor Meyer
 Mr. and Mrs. John T. Miller
 Millersville Co-operative Grain Co.
 Mr. and Mrs. R. H. Millman
 Mr. and Mrs. J. L. Monahan
 Mr. and Mrs. Will Monty



Fine Arts

Patrons (Continued)

Mrs. Fleata Mae Mosley
 Mr. and Mrs. J. Arson Murphy
 Mr. and Mrs. F. J. Nesslein
 Mr. and Mrs. James E. Nolan
 Miss Joyce Nowak
 Mr. and Mrs. J. E. O'Gorman
 Miss Peggy Pautler
 Mrs. Catherine Phegley
 Mr. and Mrs. Clem J. Phillipp
 Mr. and Mrs. Jacob J. Piel
 Mr. and Mrs. S. Podolski

Mr. and Mrs. Vito Polizzi
 Mr. and Mrs. Henry C. Prevallet
 Miss Janet Prevallet
 Mr. and Mrs. J. V. Priest
 Mr. and Mrs. Paul Pugh
 Mrs. Cecelia Rallo
 Miss Shirley Reising
 Mr. and Mrs. Rischbieter
 Mr. and Mrs. C. E. Robert
 Mr. and Mrs. A. N. Rossie
 Mr. and Mrs. Walter L. Rutkowski



Cafeteria

Mr. and Mrs. Andrew E. Ryan
 Mr. and Mrs. Richard J. Ryan
 Fred F. Schmalz and Family
 Miss Kathleen Shaughnessy
 Mr. and Mrs. Thos. D. Sheahan
 Mr. Lloyd A. Smith
 Miss Maureen Stocking
 Mr. and Mrs. Roy J. Stocking
 Supreme Furniture Co.
 Mr. and Mrs. William B. Teasdale
 Miss Mary Toenjes
 M. J. Tracy
 Mr. and Mrs. J. O. Trampe
 Mr. and Mrs. A. C. Troilo
 Mr. James J. Walsh
 Mrs. Peggy Wardein Wegener
 Mr. and Mrs. Carl E. Whitfield
 Mrs. Ernest Brooks Wilkins
 Mr. and Mrs. Joseph J. Witte
 Mayme Wittenbrink
 Miss Betty Wyers
 Miss Marion Wyers
 Mr. and Mrs. H. J. Zitt
 Dr. and Mrs. J. A. Zwislser