

2014

Gee's Bend

by
Elizabeth Gregory Wilder

February 7 - 23



www.mustardseedtheatre.com



History of Gee's Bend, Alabama

The community of Gee's Bend (whose official name is Boykin) is situated in West Alabama in the bend of the Alabama River. Joseph Gee came to fertile land in the bend of the river in 1816 to grow cotton. He brought 18 enslaved blacks with him and established a plantation. In 1845 the Gee brothers sold the plantation to a relative, Mark H. Pettway.

During the 1930s, Gee's Bend saw a considerable shift in their community. A merchant who had given credit to the families of the Bend died and his family collected on debts owed to him in a most vicious way. The families watched as all their food, animals, tools and seed were taken away. Farm Security Administration became involved and set up Gee's Bend Farms, Inc.-a pilot project that was a cooperative based program to help sustain the inhabitants. The government built "Roosevelt" houses and sold tracks of land to the families of the bend, thus giving the African American population control over the land.

In the 1960s, 70s, 90s, and in the present, the community of Gee's Bend gained a significant amount of national attention for the quilts produced there. In the late 1990s, a folk art collector from Atlanta, Georgia, after seeing a photograph made by Roland Freeman of a quilt draped over a wood pile, went to the region and bought hundreds of quilts. The pieces have been heralded as brilliant pieces of modern art. The collection of quilts from Gee's Bend was first shown at the Houston Museum of Art, before traveling to the Whitney Museum in New York, where high-acclaim continued to flow regarding the quilts.

Article by Kyes Stephens

<http://www.auburn.edu/academic/other/geesbend/explore/history.html>

Gee's Bend is produced with special arrangement by
Dramatists Publishing.

Cast

Sadie	Jacqueline L Thompson
Alice/Asia	Marty K Casey*
Nella	Alicia Reve Like
Macon	Reginald Pierre

Designers & Crew

Director	Deanna Jent
Assistant Director	April Lowe
Stage Manager	Katie Donnelly
Assistant Stage Manager	Emma Bruntrager
Set Design	Kyra Bishop
Light Design	Bess Moynihan
Costume Design	Jane Sullivan
Assistant Costume Design	Emma Bruntrager
Sound Design	Patricia Duffin
Props Master	Meg Brinkley
Dialect Coach	Sydney Frasure
Music Assistant	Evelyn Johnson
Wigs	Lori Renna
Light Board Operator	Frances Garren
Sound Board Operator	Traci Clapper
Running Crew	London Reynolds
	Lindzey Jent
House Manager	Tanya Tweedy
Box Office	London Reynolds
	Marki Miller
Shop Supervisor	Jon Hisaw
Shop Assistants	Tom Stevenson
	Ryan Stewart

*Appearing Courtesy of Actors' Equity Association, the Union of Professional Actors and Stage Managers in the United States, appearing under a Special Appearance Contract

Cast Biographies

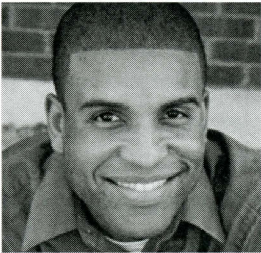


Marty Casey* a National Playwright and Director, began her career over 15 yrs ago as a National touring actress. Marty is a member of the Actors Equity Association, since 2006. Marty has toured successfully worldwide, and been awarded and recognized for her writing and directing. Her credits include; Actress: *The Last of the Red Hot Mama's*, *Menopause the Musical*, *Looking for Mr. Do Right*, *Be Careful What U Pray 4*; Writer/

Director/Producer *P.H.A.T. Girls Don't Cry*, *A House Divided*, *Lord Knows I've Tried*. Marty has also appeared on *Don't Forget the Lyrics*, *The Oprah Winfrey Show*, and *The Price is Right*. Marty is currently working on a reality show scheduled to air next fall. Proverbs 18:16; A man's gift maketh room for him, and bringeth him before great men!!!



Alicia Revé Like is a 2011 graduate of the University of Missouri, Columbia, with a BA in Music. She has been in productions of *The Mountaintop*, *Company* and *The Wiz* and has worked for the Coterie Theatre in Kansas City and St. Louis' Black Rep. #Praise



Reginald Pierre is thrilled to be making his debut with Mustard Seed Theatre. Recent roles include Lincoln in *Topdog/Underdog* (St. Louis Actors Studio) and DJ in *Medal of Honor Rag* (West End Players Guild). He would like to thank Deanna for the opportunity to be a part of this production and his family for their unwavering support.



Jacqueline Thompson received her B.A. in Speech Communications from Clark Atlanta University in Georgia and holds a Master in Fine Arts in Acting from the University of Louisville as well as a graduate certificate in African American Theatre. She also earned a certification in Broadcast Performance from the Broadcast center in St. Louis. This actor, singer, director and poet has utilized her collective experiences to work as a teaching artist for regional theatres such as Actors Theatre of Louisville (2011-2012) and The St. Louis Black Rep (2001). She has over ten years in education, teaching as well as creating drama curriculum for area charter schools.

Designers and Crew Biographies



Kyra Bishop is a senior scenic design student at The Conservatory of Theatre Arts at Webster University. Previous Mustard Seed credits include assistant scene designer for *A Winter's Tale* and *Godspell* and Scene Designer for *All is Calm*. Other design credits include *A Midsummer Night's Dream*, *The Sound of Music*, *Nevermore*, and *Dinner with Friends*.



Meg Brinkley has worked for many local theatre companies including Shakespeare Festival St. Louis, Hot City Theatre, New Jewish Theatre, ACT Inc., and R-S Theatrics. A graduate of Fontbonne University, she adds the role of Production Manager to her numerous accomplishments. Thanks to her theatre family, to Chuck, to her 3 sons, and of course, to coffee.



Katie Donnelly returns to Mustard Seed Theatre as a Stage Manager. Other credits include work with HotCity, Dramatic License and most recently onstage with the Fontbone Theatre Department in their production of *The Children's Hour*. In April, she will reprise her role as Lisa in MST's revival of *Falling*. She would like to thank her Mom for all the support, her wonderful friends, and you for supporting local theatre. Go see a play!



Patricia Duffin most recently designed sound for Fontbonne University Theatre Department's production of *A Piece of My Heart*. She was Stage Manager for Mustard Seed Theatre Productions of *Jane Eyre*, *Playland*, and *Going to See the Elephant*; as well as Director of Fontbonne University Theatre Department's production of *Crave*. She would like to thank Deanna, Michael, Meg and Bess for the opportunity to continue her exploration as a Sound Designer and especially

would like to thank her husband for tolerating her exploration in her love of theatre.

Biographies



Sydney Frasure was last seen in Fontbonne University Theatre's production of *The Children's Hour*. She also performed in Fontbonne's production of *Twelfth Night* as Maria and in Mustard Seed Theatre's production of *The Winter's Tale*. Other recent roles include Lady Macduff in *Macbeth* (Meramec) and the Beggar Woman in *Sweeney Todd* (Act II Theatre). Sydney also spent a summer studying Shakespeare at the Royal Academy of Dramatic Arts in London.

Deanna Jent is in her 19th year of teaching at Fontbonne University.



She has been nominated five times for the Kevin Kline "Best Director" Award and won the Best Director of a Musical for her 2011 production of *Godspell*. Deanna has directed at professional theaters throughout St. Louis, including the New Jewish Theatre, Shakespeare Festival St. Louis Touring Company, The Orange Girls, ACT Inc., Stray Dog Theatre, and St. Louis Shakespeare. She has written numerous adaptations for the stage from novels such as *Pride and Prejudice* by Jane Austen, *Till We Have Faces* by C.S. Lewis, and *Imaginary*

Jesus by Matt Mikalatos. Her play *Falling* was nominated for a Drama Desk Best Play award following its Off-Broadway run in 2012. *Falling* most recently played at Rogue Machine Theatre in Los Angeles, will open in March 2014 at Meadowbrook Theatre in Michigan and will return here in April, 2014!

Mustard Seed Theatre Autism Education Project Fundraiser

A concert by Julia Murney

Monday, March 3, 2014

Sheldon Concert Hall

www.metrotix.com

Biographies

Bess Moynihan received a BA in Performing Arts with an emphasis in Acting and Directing from Fontbonne University in 2008. Over the last 5 years, Bess has worked both in the professional and educational theatre setting. After graduation, Bess served as the Production Manager and Shop Supervisor at Fontbonne University. As an Adjunct Faculty member she co-taught lighting design and theatre synthesis, as well as lectured on technical theatre, budgeting for a season, and production/stage management. Professionally Bess has been the Production Manager for HotCity Theatre, Mustard Seed Theatre, and Ozark Actors Theatre's. Some of her other professional credits include: Stage Manager, Lighting Designer, Scenic Designer, Properties Master, Scenic Artist, Company Manager, Carpenter, Choreographer and Actor. Bess is currently the Managing Director for HotCity Theatre. She would like to thank Deanna, Michael, Meg, and the cast and crew for this wonderful experience.



Jane Sullivan. has designed costumes for *All is Calm*, *Shadowlands*, *Godspell*, *Playland* and *Going to See the Elephant* for Mustard Seed Theatre; *Intelligent Life*, *The Winners*, *Goodbye Ruby Tuesday* and *The Divine Sister* for HotCity. Jane has also worked with ACT Inc., Dramatic License Productions, Ozark Actors Theatre and Fontbonne University. She has recently joined the MST administrative staff. Thanks to Michael, Mark and Zoe for their encouragement, love and support.

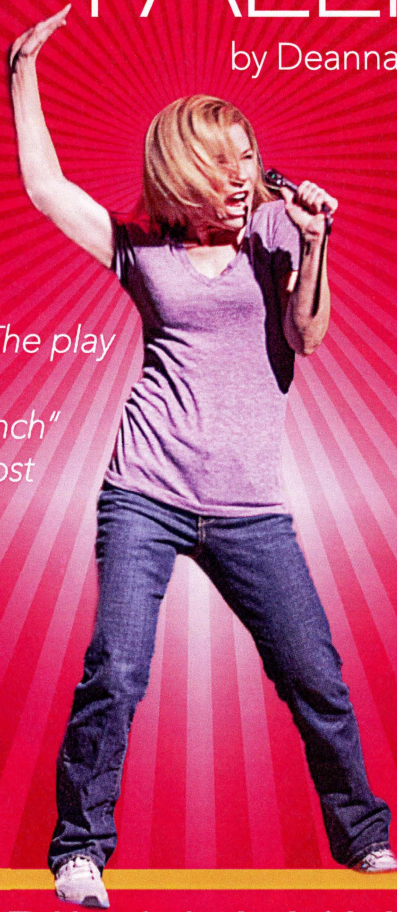
Special Thanks

Bonnie Jent
Earthbound Recycling
Lindenwood University
Village of the Blue Rose

Back by popular demand,

FALLING

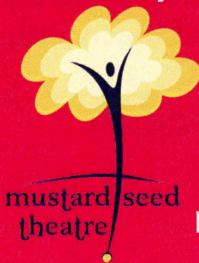
by Deanna Jent



"FALLING soars! The play packs a powerful punch"
- New York Post

APRIL 11-MAY 4

Mustard Seed Theatre
Fontbonne University
in Clayton
314.719.8060



mustardseedtheatre.com

