



Fontbonne
1948







FONTBONNE

AD BONA



1948

FONTBONNE



Editor	<i>Helen Holmberg</i>
Feature Editor	<i>Mary Ann Coghill</i>
Photo Editor	<i>Jane Tracy</i>
Business Manager	<i>Georgia Vessell</i>
Advertising Manager	<i>Mary Margaret McCalpin</i>



Foreword

In the great melting-pot of Fontbonne

A mingling of many—

Freshmen and seniors, Yankees and Southerners,

Faculty and students, undergraduates and Ph. D.'s,

A community friendly, cooperative, Christian.

A mixing of much—

Lectures and labs, basketball games and proms,

Library and den, chapel visits and caf chats,

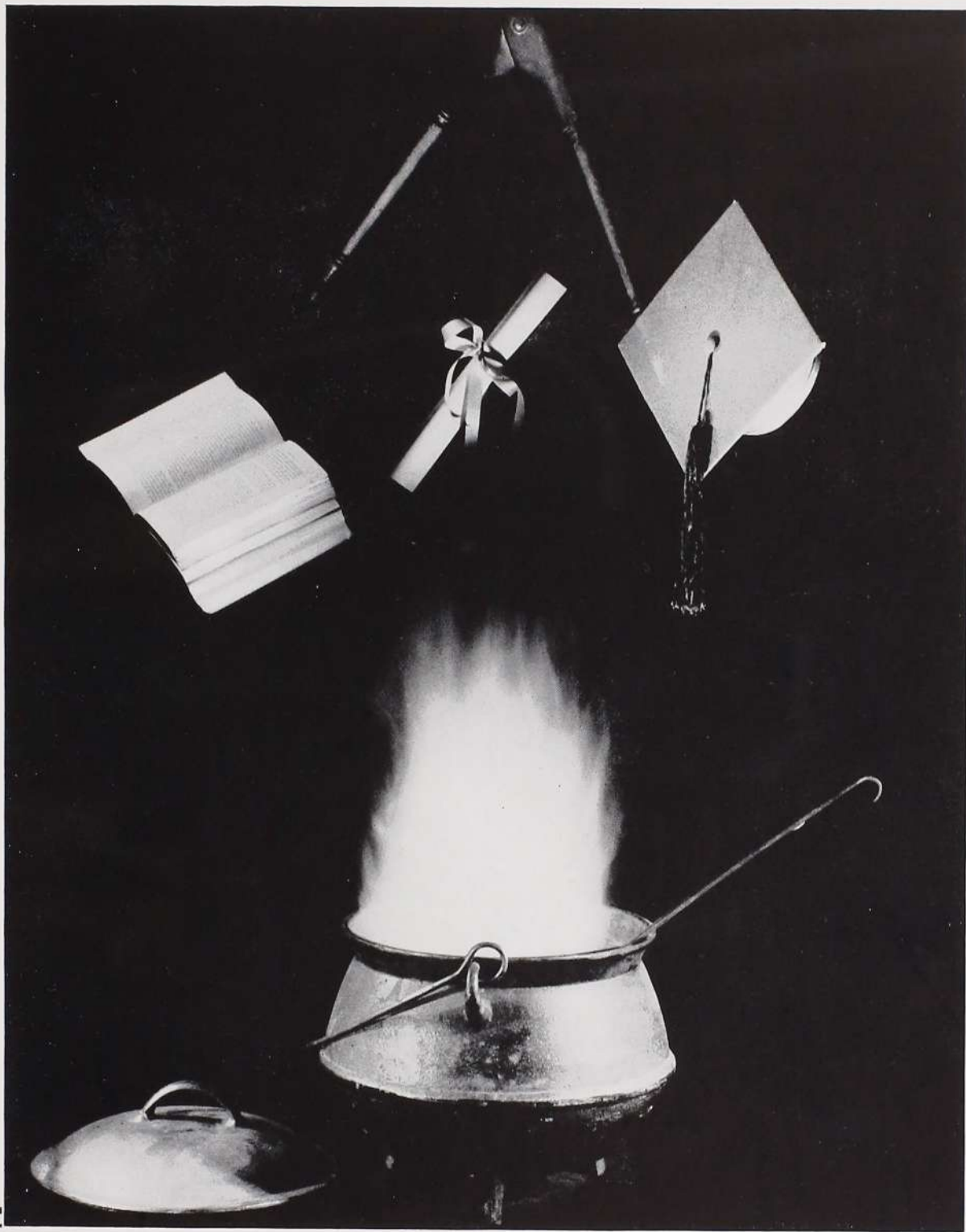
A development intellectually, physically, socially, spiritually.

Into memory melts a well-measured blending,

Another year at Fontbonne.

ACADEMICS





Faculty

MOTHER MARY BERENICE O'NEILL, C.S.J.,
A.M., Ph.D.

President, Professor of Education, and Director
of the Department

SISTER JOSEPH ALOYSIUS GEISSERT, C.S.J.,
A.M.

Dean, Professor of History, and Director of
the Department

REVEREND BERNARD J. BAK, C.R., S.T.L.

Lecturer in Religion

SISTER LOUIS JOSEPH BAUER, C.S.J., B.M.,
Assistant Professor of Music

SISTER JOHN JOSEPH BEZDEK, C.S.J., M.M.,
Ph.D.

Professor of Music and Director of the
Department

JOAN PATRICIA BRADY, A.M.

Instructor in Philosophy

SISTER RITA MARIE BUSHMAN, C.S.J., A.M.,
Ph.D.

Assistant Professor of Philosophy and Director
of the Department

THERESA M. CARMODY, M.S.

Associate Professor of Home Economics and
Associate Director of the Department

SISTER ST. PAUL CHRISTMAN, C.S.J., A.M.

Associate Professor of German

NAN SHALLCROSS CLEMENS, A.B.

Librarian

SISTER HELEN JOSEPH COERVER, C.S.J., M.S.

Assistant Professor of Chemistry

ALAN JOSEPH COPE, M.M.

Instructor in Music

SISTER ROSE GENEVIEVE DOWNS, C.S.J., M.S.

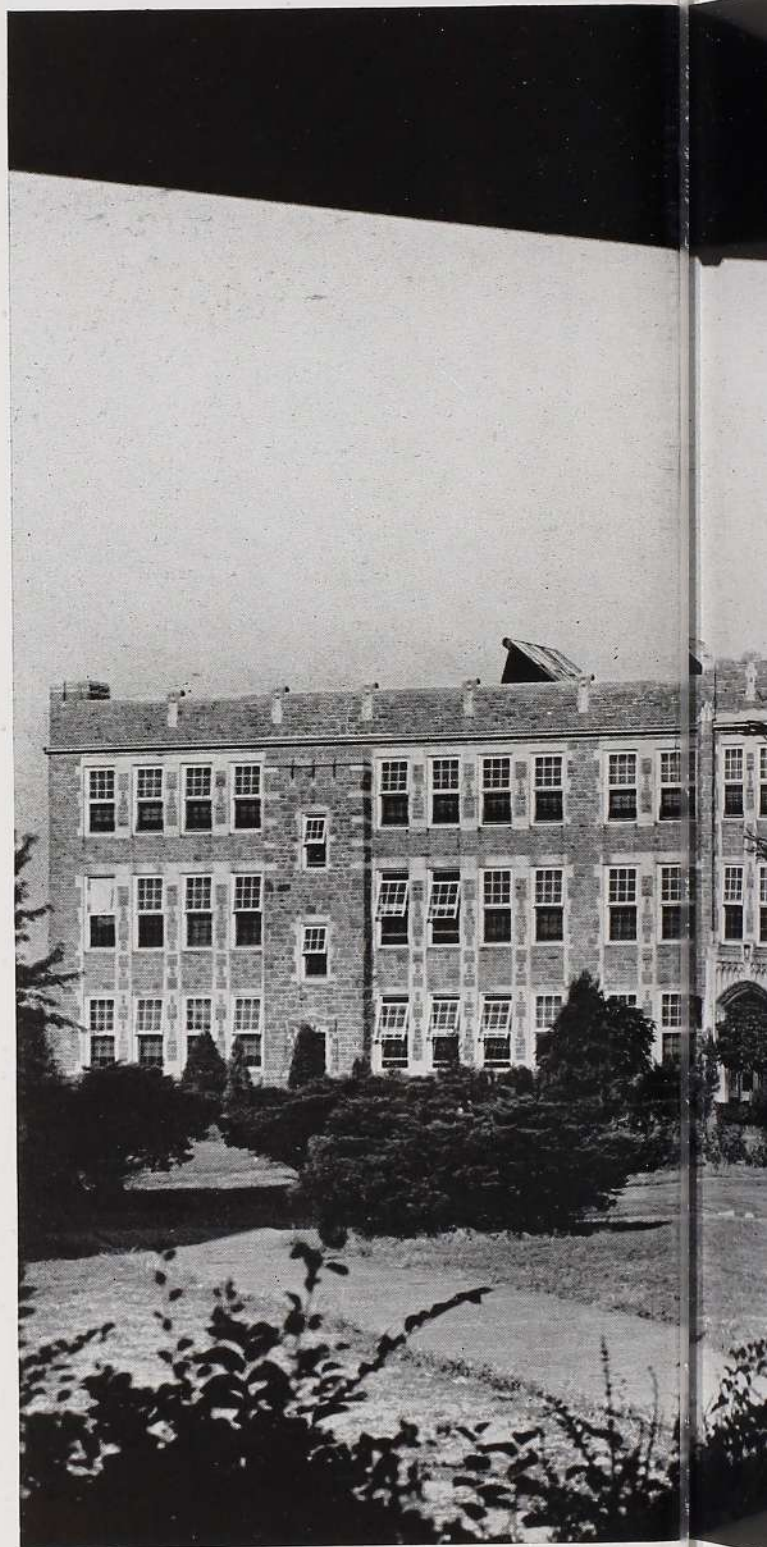
Assistant Professor of Dietetics

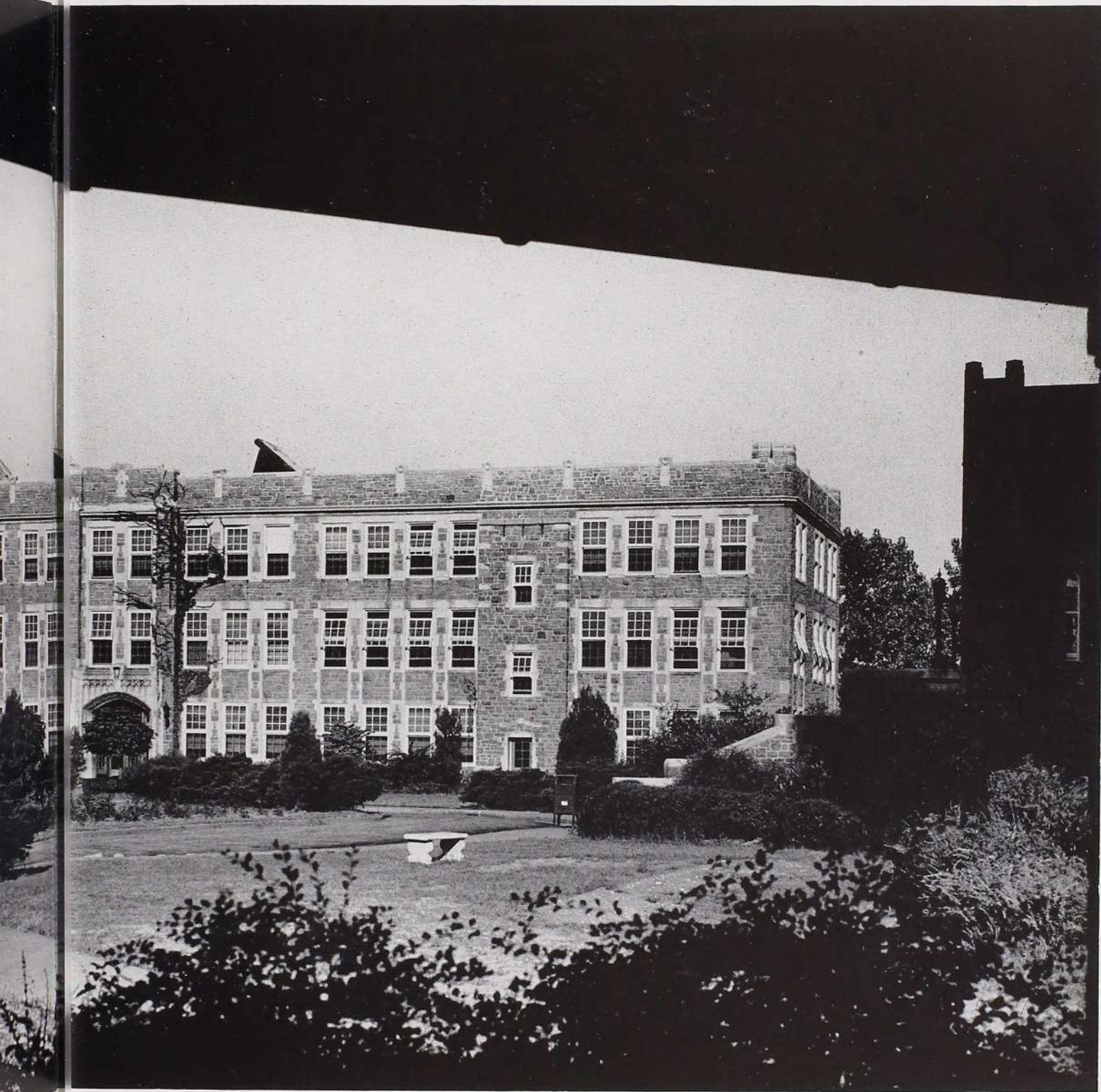
SISTER BERNARD JOSEPH DUNNE, C.S.J., A.M.

Associate Professor of English

SISTER AGNES JOSEPH DONOVAN, C.S.J.,
B.S.

Instructor in Biology





Faculty

SISTER MARY ANNETTA FLYNN, C.S.J., A.M.
Assistant Professor of Art

SISTER MARY BERCHMANS FOURNIER,
C.S.J., A.M., Candidate Ph.D.
Professor of French and Director of the
Department of Modern Languages

REVEREND WALTER JOHN GALUS, C.R.,
S.T.D.
Lecturer in Religion

SISTER MARY ANTONE GAYDOS, C.S.J., A.M.
Instructor in Music

SISTER MARY FREDERIC GLASER, C.S.J., A.M.
Professor of French and Spanish

SISTER MARY ERMEN GREENE, C.S.J., A.B.
Assistant Librarian

TERESA HELEN HAFERTEPE
Field Secretary

REVEREND JOHN A. HENSGEN, C.Ss.R.
Lecturer in Religion

SISTER ROSE AGNES KEYES, C.S.J., M.S.
Associate Professor of Biology and Director
of the Department

FRANCIS WILLIAM KINKEL, A.M.
Instructor in English

SISTER MARY VICTORINE KLEIN, C.S.J., M.M.
Assistant Professor of Music

SISTER MARY LORETTA LANGENDORF, C.S.J.,
A.M., Ph.D.
Instructor in English and Acting Director of
the Department

SISTER MARY TERESINE LEWIS, C.S.J., A.M.,
Ph.D.
Instructor in Mathematics

SISTER MARY HILDA LORSBACH, C.S.J., A.B.
Assistant Professor of Secretarial Studies

REVEREND RAYMOND THOMAS McKEE,
C.Ss.R., M.S.
Lecturer in Religion

SISTER TERESA MARY McKEOUGH, C.S.J.,
A.M.
Instructor in Latin

CARLO MARSELLI, A.M.
Instructor in Italian

BELLE MARIE MULLINS, A.M.
Associate Professor of Dramatics and Director
of the Department

SISTER MARY ELEANOR NASH, C.S.J., A.M.
Associate Professor of History

DOYNE CHRISTINE NEAL, A.A.G.O., F.A.G.O.
Instructor in Voice

SISTER MARY ALFRED NOBLE, C.S.J., A.M.,
Ph.D.
Professor of Psychology and Director of the
Department

REVEREND LEO. J. OHLEYER, O.F.M., S.T.D.
Professor of Religion

SISTER CATHERINE DE RICCI OSTERMANN,
C.S.J., A.M.
Professor of Chemistry and Director of the
Department

REVEREND CHARLES W. QUINN, C.Ss.R.
Lecturer in Religion

JANE MARIE PROHL RAHN, A.B.
Instructor in Journalism and English

SISTER ANASTASIA SCHARFENBERGER,
C.S.J., A.M.
Instructor in Education

SISTER MARY MARTHA SCOTT, C.S.J., M.S.
Associate Professor of Home Economics and
Director of the Department

SISTER MARY EDWINA TOBIN, C.S.J., A.M.
Professor of Greek and Latin and Director of
the Department of Classical Languages

FRANCES P. TROEMEL, M.S.
Associate Professor of Art and Director of the
Department

SISTER SUSANNE MARIE VACHON, C.S.J.,
A.M.
Registrar

WILLIAM EDWARD VAN TAAY, J.D.
Instructor in Sociology and Economics and
Director of the Department

GWYNETTE CLAUDIA WILLIS, A.M.
Assistant Professor of Physical Education and
Director of the Department

MARY ISABEL WINSLOW, A.M., Ph.D.
Director of Personnel and Lecturer in Modern
Languages

Honors

Alumnae Hood

awarded for loyalty, leadership, and service

Mary Ann Coghill

Cum Laude Graduates

Mary Ann Coghill

Donna Mae Lee

Janet Spillane

Kappa Gamma Pi

Mary Ann Coghill

Jeanne Davison

Donna Mae Lee

Sidonia Michelson

Janet Spillane

Delta Epsilon Sigma

Mary Catherine Kelly

Mary Margaret McCalpin

Doris McWilliams

Thelma Munkres

Elaine Vande Walle

Phi Beta Chi Awards

Biology: Lily Van Dyke Vitt

Chemistry: Joan Steffen



Alice Louise Adams

University City, Missouri

B. S. in Home Economics

Minors: Science, Philosophy

Class Secretary '48; F. A. A. '45; Home Economics Club '45, '46, '47; I. R. C. '46, '47.



Eleanor Kathleen Byrne

St. Louis, Missouri

B. S. in Sociology

Minors: Philosophy, Biology

F. A. A. '45, '46, '47, '48, President '48; I. R. C. '45, '46, '47, '48; May Maid '47; Modern Language Club '47; Pep Club '48; Red Cross '47, '48, Chairman '47; Sodality '45, '46, '47, '48.



ALICE



ELLIE

Nancy Catherine Byrne

St. Louis, Missouri

B. S. in Sociology

Minors: Philosophy, Chemistry

F. A. A. '45, '46; Footlights Club '45; Hockey Team '45; Home Economics Club '46; I. R. C. '46, '47, '48; Modern Language Club '45; Phi Beta Chi '46, '47, '48; Sodality '45, '47, '48.



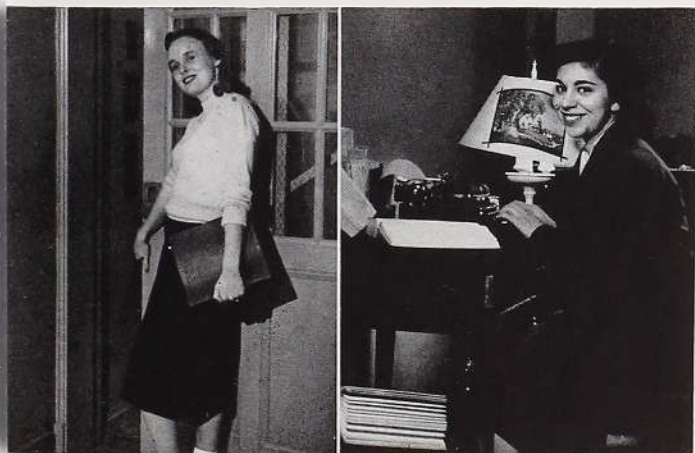
Lorraine Mary Camper

Green Bay, Wisconsin

A. B. in English

Minors: French, Psychology, Philosophy

A Cappella Choir '47, '48; C. S. M. C. '45, '46, '47, '48, Secretary-Treasurer '46, President '47; Glee Club '45, '46, '47, '48, Secretary '48; Legion of Mary '46, '47, Secretary '46; Modern Language Club '45, '46, '47; Poetry Club '46, '47; Sigma Beta Mu '45, '46, '47, '48, Secretary '45, Treasurer '46, '48; Sodality '45, '46, '47, '48; Spiritual Council '45.



NAN

BUGGIE



Anne Marie Clemens

Cape Girardeau, Missouri

B. M. in Music

Minors: Music Theory, French

Footlights Club '45, '46, '47, '48; Glee Club '45, '46, '48; I. R. C. '46, '47, '48; Modern Language Club '45, '46, '47, '48; Poetry Club '48; Sigma Beta Mu '45, '46, '47, '48; Sodality '47.



Margaret Mary Coff

St. Louis, Missouri

B. S. in Dietetics

Minors: Science, Philosophy

Basketball Team '45, '46, '47, '48; F. A. A. '45, '46, '47, '48; Font '45, '46, '47, '48; Footlights Club '45; Hockey Team '45; Home Economics Club '45, '46, '47, '48, Treasurer '46; May Maid '45; Modern Language Club '47; Pep Club '48; Press Club '45, '46; Red Cross '47; Sodality '45, '46, '47, '48, Secretary-Treasurer '47, Vice-Prefect '48; Spiritual Council '47, '48.



CLEM



COFFIE

Mary Ann Coghill

St. Louis, Missouri

A. B. in Psychology

Minors: Philosophy, Biology

Delta Phi '46, '47, '48; F. A. A. '45, '46, '47, '48, Vice-President '47, '48; *Font* '46, '47, '48, Press Correspondent '46, '48; *Fontbonne* '46, '48, Feature Editor '48; Pep Club '48; Sodality '46, '47, '48; Spiritual Council '48.



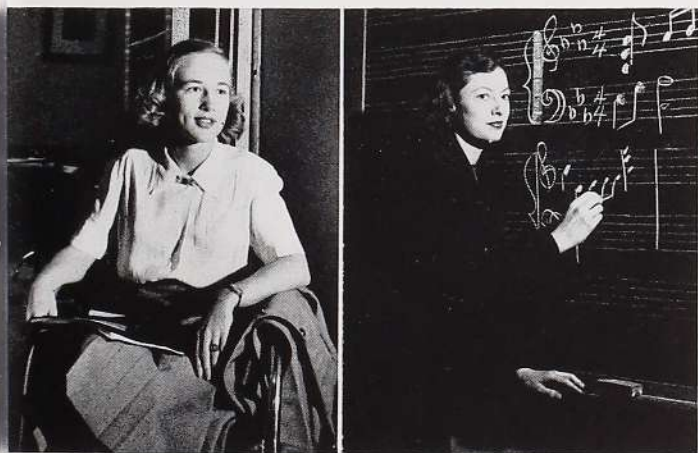
Jeanne Conway Davison

Kirkwood, Missouri

A. B. in Music Theory

Minors: Education, English

A Cappella Choir '47, '48; Delta Phi '46, '47, '48, Treasurer '47; Glee Club '47, '48; Modern Language Club '45; Pep Club '48; Poetry Club '46, '47, President '47; St. Louis University Classical Club '47, '48, President '48; Sigma Beta Mu '46, '47, '48, Secretary '47; Sodality '47, '48.



COG

JEANNE



Patricia Ann Ferry

Brazil, Indiana

B. S. in Economics

Minors: Psychology, Philosophy

Indiana State Teacher's College '44, '46; A Cappella Choir '47, '48; C. S. M. C. '47, '48; Glee Club '47, '48; I. R. C. '47, '48, President '48; Modern Language Club '47, '48; Sodality '47, '48.



Gloria Ann Ganser

Richmond Heights, Missouri

A. B. in Sociology

Minors: Psychology, Philosophy, Biology

Class President '48; Class Secretary '47; Classical Club '48; F. A. A. '45, '46, '47, '48; Font '45; I. R. C. '47, '48; Modern Language Club '45, '46, '47, Treasurer '47; Phi Beta Chi '48; Press Club '45; Red Cross '46, '47, '48, Vice-Chairman '47; Sodality '45, '46, '47, '48; Spiritual Council '47; Student Council '48.



PAT



GLO

Patricia Ruth Hanlon

Normandy, Missouri

B. S. in Dietetics

Minors: Science, Philosophy

F. A. A. '45, '46; Home Economics Club '45, '46, '47, '48,
Treasurer '47; May Maid '46; Sodality '45, '46, '47.



Dorothy Elizabeth Hendon

Dallas, Texas

B. S. in Dietetics

Minors: Science, Philosophy

Our Lady of the Lake College '45; St. Louis University '46;
Delta Phi '47, '48; Glee Club '47, '48; Home Economics Club
'47, '48; Legion of Mary '47, '48; Sodality '47, '48; Spiritual
Council '48.



PATSY

DOTTIE



Theodora Myrtle Holbrook

El Paso, Texas

A. B. in Music Theory

Minors: Piano, Philosophy

A Cappella Choir '47, '48; Glee Club '47, '48; Legion of Mary '47, '48; Sigma Beta Mu '45, '46, '47, '48, Secretary '47, Vice-President '48; Sodality '47, '48.



Helen Holmberg

St. Louis, Missouri

B. S. in Biology

Minors: Chemistry, Philosophy

Basketball Team '45; Class Secretary '47; F. A. A. '45, '46; Fontbonne '45, '46, '47, '48, Photo Editor '47, Editor '48; Footlights Club '45; Legion of Mary '45, '46, '47, '48; Phi Beta Chi '46, '47, '48; Red Cross '46; Sodality '46, '47, '48; Student Council '48.



THEO



BOBBIE

Elizabeth Anne Houlehin

St. Louis, Missouri

B. S. in Dietetics

Minors: Science, Philosophy

Home Economics Club '45, '48; Pep Club '48; Phi Beta Chi '46, '47; Sodality '47, '48.



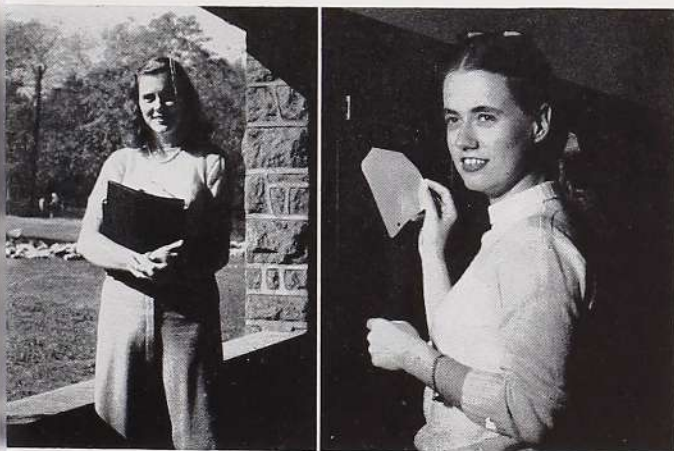
Mary Catherine Kelly

St. Louis, Missouri

A. B. in Sociology

Minors: Psychology, Biology

Classical Club '47, '48; Delta Phi '46, '47, '48, Treasurer '48; Eta Sigma Phi '47, '48; Home Economics Club '47; I. R. C. '47, '48, Secretary '47; Modern Language Club '45, '46; Poetry Club '48; Sodality '46, '47, '48; Spiritual Council '48.



HOULIE

KEL



Ruth Louise Lamwersiek

Normandy, Missouri

B. S. in Dietetics

Minors: Science, Philosophy

Home Economics Club '45, '46, '47, '48.



Margaret Ann Landwehr

Jefferson City, Missouri

B. M. in Voice

Minors: Music Theory, Philosophy

Glee Club '45, '46, '48; Modern Language Club '45, '46, '47, '48.



RUTH



MAGGIE

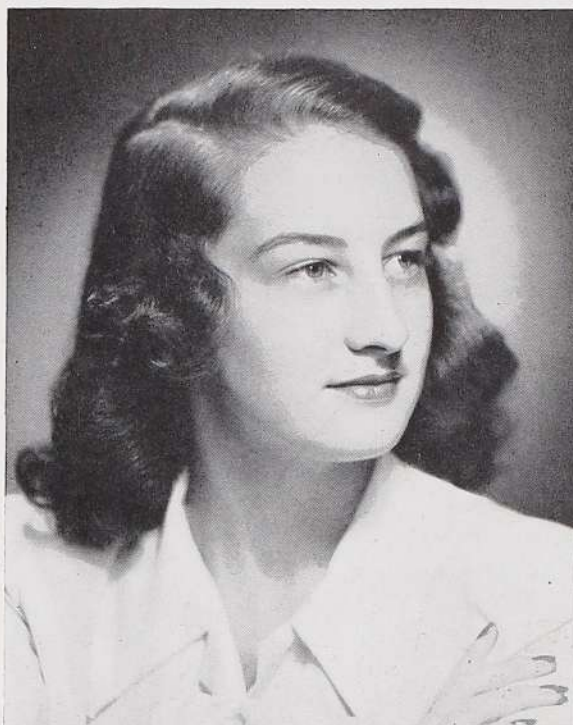
Donna Mae Lee

Memphis, Tennessee

A. B. in Sociology

Minors: Psychology, Biology

Classical Club '46, '47, Vice-President '47; Delta Phi '46, '47, '48; Eta Sigma Phi '46, '47; F. A. A. '45, '46, '47, '48; Footlights Club '45; I. R. C. '45, '46, '47, '48; Modern Language Club '45, '46; N. S. A. Delegate '46, '47; Sodality '45, '46, '47, '48; Spiritual Council '45, '46, '47; Student Council Vice-President '48.



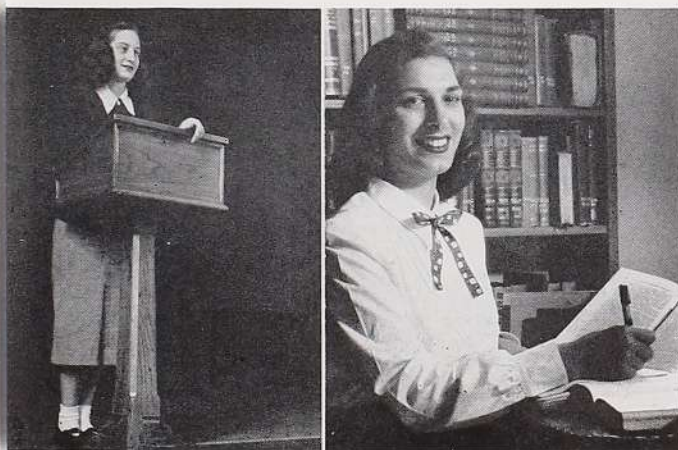
Astrid Agatha Mansour

Lake Village, Arkansas

B. S. in Biology

Minors: Chemistry, Psychology, Philosophy

Footlights Club '45, '46, '47, '48; I. R. C. '48; Modern Language Club '45, '46, '47, '48; Phi Beta Chi '47, '48; Sodality '48.



DONNA

ASTRID



Mary Margaret McCalpin

St. Louis, Missouri

B. S. in Mathematics

Minors: Chemistry, Psychology, Philosophy

C. S. M. C. '47; F. A. A. '47, '48; *Fontbonne* '47, '48, Advertising Manager '48; Footlights Club '45; Modern Language Club '45; N. F. C. C. S. Delegate '48; Pep Club '48; Phi Beta Chi '46, '47, '48; Pi Mu Epsilon '47, '48; Sodality '47, '48; Student Council Secretary '48.



Patricia Ann McKay

Clayton, Missouri

B. S. in Dietetics

Minors: Science, Philosophy

Home Economics Club '45, '48; Sodality '47, '48; Spiritual Council '48.



MAC



PAT

Doris Marie McWilliams

St. Louis, Missouri

B. S. in Home Economics

Minors: Science, Philosophy

Delta Phi '46, '47, '48, President '48; Home Economics Club '48; I. R. C. '48; Sodality '45, '46, '47, '48; Spiritual Council '48.



Sidonia Ann Michelson

Clayton, Missouri

A. B. in Psychology

Minors: Philosophy, French

Class Secretary '46; C. S. M. C. '45, '46, '48; F. A. A. '45, '47, '48; Font '46, '47; Modern Language Club '45, '46; Pep Club '48; Poetry Club '46; Press Club '45, '48; Sodality '48; Student Council President '48.



DOR

SID



Dorothy Rose Milligan

St. Louis, Missouri

B. S. in Dietetics

Minors: Science, Philosophy

Class Vice-President '48; C. S. M. C. '45, '46; F. A. A. '45 '46, '47; Home Economics Club '45, '47; Sodality '46, '47.



Doris Theresa Milton

Kirkwood, Missouri

A. B. in Speech

Minors: Philosophy, Sociology

Delta Phi '45, '46, '47, '48; F. A. A. '45, '46; Footlights Club '46, '47, '48, Vice-President '48; I. R. C. '48; Sodality '47.



DOT

DU

Thelma Nadine Munkres

Normandy, Missouri

A. B. in Speech

Minors: Sociology, Philosophy

Classical Club '47, '48; Delta Phi '48; Eta Sigma Phi '47, '48; F. A. A. '45, '46, '47; Footlights Club '46, '47, '48, Secretary '47, President '48; I. R. C. '47, '48; Modern Language Club '46; Sodality '45, '46, '47, '48.



Jane Marie Nolan

University City, Missouri

A. B. in Psychology

Minors: Philosophy, Latin

Cheer Leader '48; Eta Sigma Phi '46, '47, '48; *Fontbonne* '47, '48; Pep Club '48; Swimming Team '46.



THELMA

JANE



Marjorie Ann O'Keefe

Richmond Heights, Missouri

B. S. in Home Economics

Minors: Science, Philosophy, Psychology

C. S. M. C. '45, '46; Delta Phi '45, '46, '48, Secretary '46;
Home Economics Club '45, '46, '48; Pep Club '48.



Katherine Marie Owen

Jacksonville, Florida

A. B. in Sociology

Minors: Psychology, Philosophy

A Cappella Choir '47; Classical Club '47; Footlights Club '48;
I. R. C. '48; Poetry Club '47, '48.



MARGE



KATHERINE

Clara Marie Pechman

St. Louis, Missouri

B. S. in Home Economics

Minors: Science, Philosophy

F. A. A. '45, '46; Hockey Team '45; Home Economics Club '47, '48; Phi Beta Chi '48.



Mary Elizabeth Petrequin

Ste. Genevieve, Missouri

B. M. in Music

Minors: Music Theory, Philosophy

Glee Club '45, '46, '47, Secretary-Treasurer '46, President '47; Modern Language Club '46, '47, '48, Secretary '47, President '48; Sigma Beta Mu '45, '46, '47, '48, Vice-President '48; Sodality '47, '48.



CLARA



MICKEY



Rayda Cristina Pérez

Santurce, Puerto Rico

B. S. in Biology

Minors: Chemistry, Philosophy

Legion of Mary '45, '46, '47, '48, President '48; Modern Language Club '45, '46, '47, '48, Vice-President '48; Phi Beta Chi '46, '47, '48; Secretary of Resident Student Association '48; Sigma Beta Mu '45, '46; Sodality '46, '47, '48.



Louise Catherine Pope

University City, Missouri

A. B. in Art

Minors: Related Art, Philosophy, Speech

Class Treasurer '48; F. A. A. '45, '46; Font '45, '46, '47, '48; Fontbonne '47; Pep Club '48; Press Club '45, '46; Sodality '45, '47.



RAYDA



LOUISE

Ann Constance Quirk

St. Louis, Missouri

B. S. in Biology

Minors: Chemistry, Philosophy

Class President '45; F. A. A. '45, '46; Modern Language Club '46, '47; Phi Beta Chi '46, '48; Sodality '48; Student Council '45.



Mary Lou Riechmann

St. Louis, Missouri

A. B. in Education

Minors: History, Latin

Classical Club '45, '46, '47; Class Vice-President '47; F. A. A. '45, '46, '47, '48; Modern Language Club '45; Sodality '47, '48.



NANCY



LOU



Mary Kathleen Roetto

Monett, Missouri

B. S. in Chemistry

Minors: Mathematics, Philosophy

C. S. M. C. '47, '48, Vice-President '48; F. A. A. '44, '46; *Fontbonne* '48; Hockey Team '44; Legion of Mary '44; Modern Language Club '46, '47; Phi Beta Chi '46, '47, '48, President '48; Sodality '44, '46, '47, '48.



Mary Jane Ruoff

St. Louis, Missouri

B. S. in Sociology

Minors: History, English

Marycrest College '45, '46; Delta Phi '48; *Fontbonne* '48; Footlights Club '48, Vice-President '48; I. R. C. '48; Sodality '48.



KATIE



JANIE

Shirley Mary Sappington

St. Louis, Missouri

B. S. in Physical Education

Minors: Education, Biology

Basketball Team '45, '46; Cheer Leader '46; Class Vice-President '45; F. A. A. '45, '46, '47, '48; Font '45; Footlights Club '45, '46; Hockey Team '45, '46; Modern Language Club '45; Pep Club '48; Press Club '45, '46; Sodality '45, '46, '47; Student Council Treasurer '48.



Kat'ryn Louise Sargl

Beaumont, Texas

B. S. in Dietetics

Minors: Chemistry, Philosophy

St. Mary of the Woods College '45, '46; Home Economics Club '47, '48, President '48; I. R. C. '48; Phi Beta Chi '48; Sodality '47, '48.



SAP



KATHRYN



Marjorie Lucille Scandiff

Chicago, Illinois

A. B. in English

Minors: Journalism, Philosophy

C. S. M. C. '45, '46; *Font* '47, '48; Pep Club '48; Press Club '45, '46; President of Resident Student Association '48; Sodality '45, '46, '47, '48; Spiritual Council '48; Student Council '48.



Jane Frances Sly

Normandy, Missouri

A. B. in Sociology

Minors: Psychology, Speech

Classical Club '47, '48; Delta Phi '48; Eta Sigma Phi '47, '48; F. A. A. '45, '46, '47; Footlights Club '47, '48; I. R. C. '47, '48; Treasurer '48; Poetry Club '48; Sodality '45, '46, '47, '48.



MARGIE



JANE

Janet Teresa Spillane

Savannah, Georgia

B. S. in Chemistry

Minors: Mathematics, Philosophy

Armstrong Junior College '45, '46; C. S. M. C. '47, '48; Glee Club '47; Modern Language Club '47, '48; Phi Beta Chi '47, '48, Treasurer '48; Pi Mu Epsilon '47, '48; Sodality '47, '48.



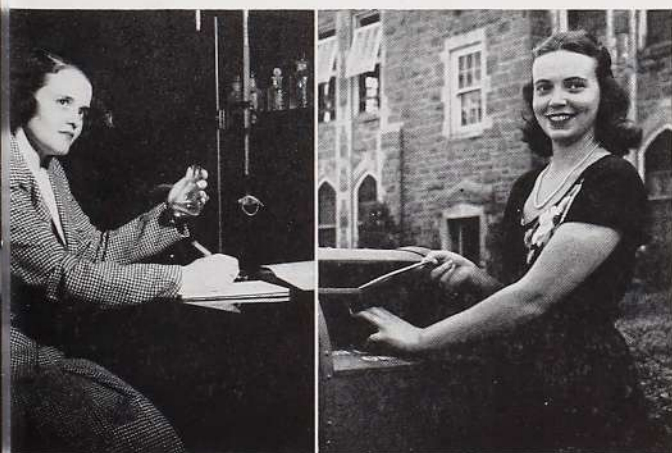
Rose Marie Storm

Kirkwood, Missouri

B. S. in Chemistry

Minors: Biology, Psychology

Class President '47; Delta Phi '46, '47, '48; F. A. A. '45, '46, '47; I. R. C. '47, '48; Modern Language Club '45, '46; Phi Beta Chi '46, '47, '48, Vice-President '48; Poetry Club '47, '48; Student Council '47.



JAN

STORMY



Mary Alice Stueber

St. Louis, Missouri

A. B. in English

Minors: French, Philosophy

F. A. A. '45; Font '48, Business Manager '48; Modern Language Club '46; Poetry Club '45.



Elaine Mae Vande Walle

Green Bay, Wisconsin

B. S. in Dietetics

Minors: Science, Philosophy

Delta Phi '46, '47, '48; Glee Club '45; Home Economics Club '45, '46, '47, '48; Legion of Mary '45, '46, '47, '48, Treasurer '45, Secretary '46, Vice-President '47; May Queen '48; Pep Club '48; Sodality '45, '46, '47, '48, Prefect '48; Spiritual Council '46, '47, '48; Student Council '48.



SALLY



ELAINE

Georgia Johanna Vessell

Ste. Genevieve, Missouri

B. S. in Sociology

Minors: Economics, Psychology, Philosophy

Fontbonne '45, '46, '47, '48, Business Manager '47, '48; Footlights Club '46; Glee Club '45, '46, '47, '48; I. R. C. '47, '48; Modern Language Club '46, '47; Sigma Beta Mu '45, '46, '47, '48.



Gloria Cecile Vogel

St. Louis, Missouri

B. S. in Sociology

Minors: History, Physical Education

C. S. M. C. '45, '46, '47; F. A. A. '45, '46, '47, '48; Glee Club '45; I. R. C. '48; Pep Club '48; Sodality '45, '46, '47.



GEORGIA



GLORIA

Junior Class

Front: Mary McManus, Secretary; Therese Fischer, President.
Back: Ruth Bussmann, Vice-President; Rosemary Burke, Treasurer.

Front: M. DuBois, M. E. Roetto.
Back: D. Henschke, H. Koutscumpas, M. Burchfiel.



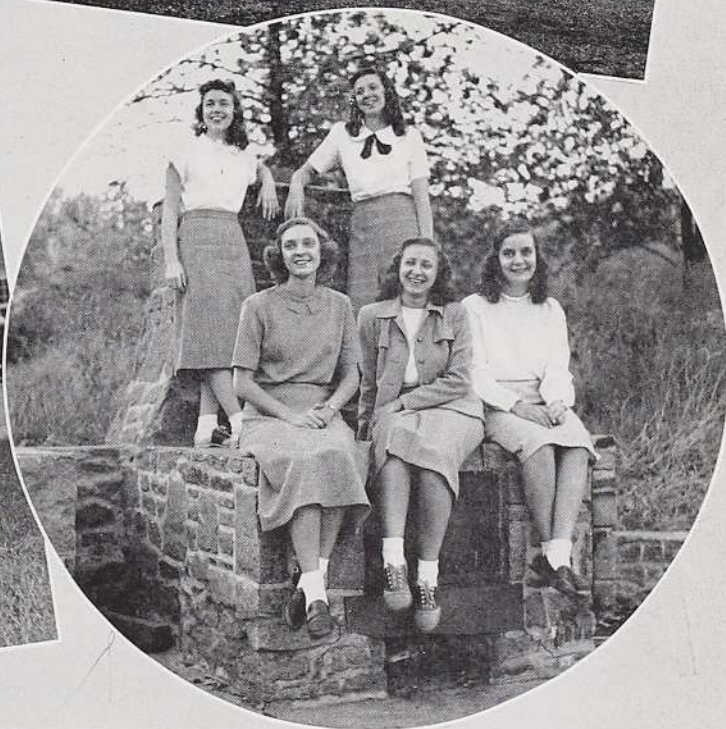
Front: P. Dolan, L. Benz, L. Finazzo.
Back: A. Graupner, M. Tuberty.

E. Demko, G. Monnig, M. Porporis, P. Meyer, B. Thien, M. Schumacher.

Junior Class

M. L. Streit, M. J. Reedy, M. Haley, J. Tracy.

M. Kingston, M. Wolf, H. O'Brien, L. Hough, P. Mitchell.



L. Brantley, G. Lunsmann, M. Guelker, R. Leahey.

Seated: D. Daly, M. Maertz, M. Naxera.
Standing: E. Springman, M. Stasi.



Rita Karpel, Treasurer; Jean Barthelme, Vice-President;
Polly Coleman, President; Mary Louise Lennemann, Secretary.



M. Merello, R. Stapenhorst, G. Hay, B. Herman, M. J. Quanti, M. Delabar

M. Zeis

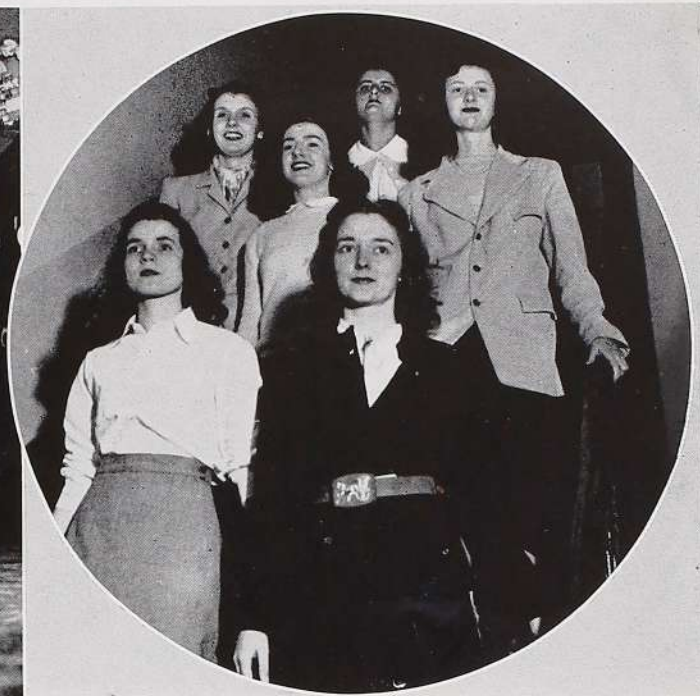


First Row: V. Blaes, B. Quick, J. Bugg.
Second Row: J. Barthelme, M. Veidt, E. Roer.

Sophomore



M. Zeis, N. Gifford, F. Demko, M. Hergenrother, C. Frisella, M. Graff.



First Row: J. Kronsbein, M. L. Echele.
Second Row: P. Ware, R. Ryan, S. George, M. J. Crean.

Class



E. Neumann, E. Junkin, M. Reiser, V. McGrath, L. Lenski.



M. Carey, J. A. Scott, E. Murrill, J. McCartney, D. Schelly,
L. Wuellner, G. Wand.



Sister Susanne Marie, P. French, K. Bocklage, M. Byrnes,
J. A. Monnig, H. Einig, G. Alfert.



P. Fitterer, H. Cataldi, S. Sansone, C. Dunn.

Sophomore



V. Alexander, M. Reiser, T. Fontana, M. Vogt, C. Hummel,
M. Bachmann, M. Jennings.



J. Dettenwanger, M. J. Molumby, M. Boll, B. Beffa,
T. Reid, S. A. DeLisle.

Class



Seated: B. Lucchesi, P. Murphy, R. Rechtien, P. Wulfmeyer, J. Haley.
Standing: M. J. O'Brien, J. A. Ostertag, K. Lavin.



Jean Helmerich, Treasurer; Virginia O'Brien, President;
Patricia Mueller, Vice-President; Barbara Deiters, Secretary.

Freshman



Seated: D. Lipic, B. Meyer.
Standing: P. Brinsa, P. Meahl, L. Vitt, M. Beckman, J. Murray, M. L. Young.



Front: P. Hayes, J. Robertson, F. Foster, M. Miller.
Back: S. Rafferty, J. Leritz, J. Keough, M. Gratiaa.

nan
Class



B. Eifert, J. Hilker, J. Greener, C. Ryan, J. Hamilton,
A. Cataldi, J. Stagoski, L. Feldhaus.



Front: J. Rabe, V. O'Brien, A. Klausner, M. Seever.
Back: N. Carter, D. Garcia, K. Siromas.



Front: M. Steins, E. Zimmermann, R. Lawlor, J. Steffen.
Back: J. Devine, J. Collins, M. J. Massucci, C. Nelson.



M. Henke, J. Heineck, S. Whyte, P. Reilly, J. Schenkel, R. Toebben,
J. Altman, T. Rosenberg.

Freshman



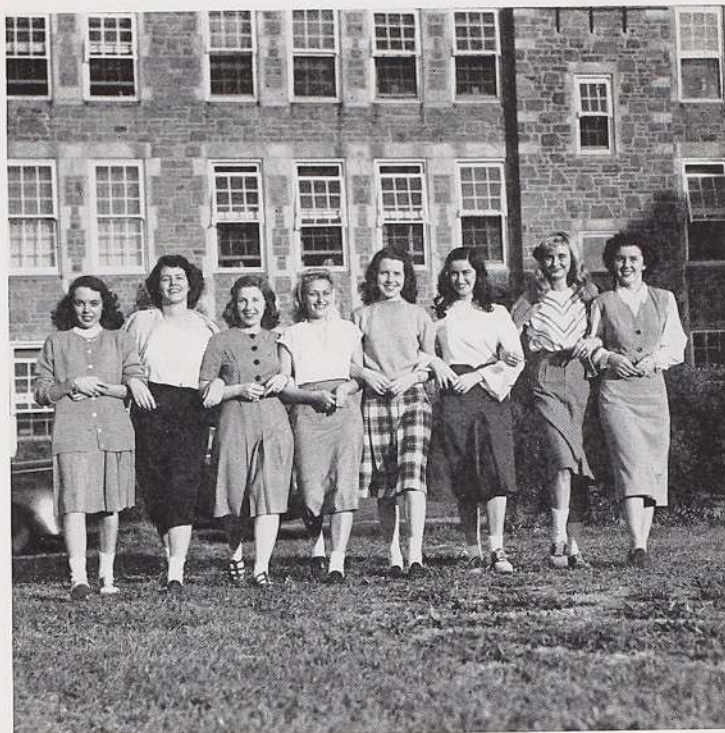
First Row: M. Smith, B. Deiters, J. Stickney.
Second Row: E. Vessell, D. Hickey, N. Duerr, J. Chardin,
B. Ladd, P. Van Sant.



First Row: C. Higgins, E. Champion.
Second Row: E. Roehrig, V. Graeff, N. Costello.
Third Row: P. Murphy, J. Wiss.

man

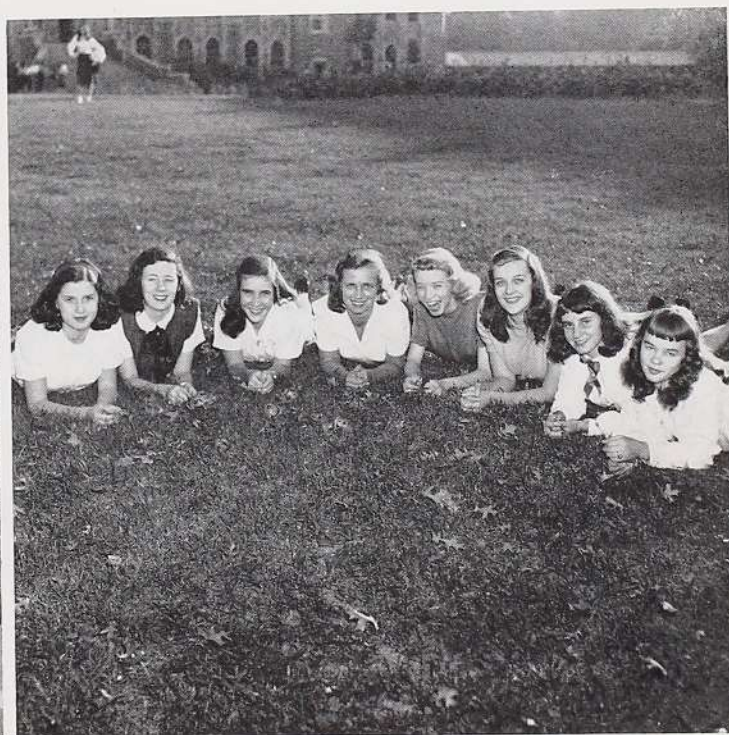
Class



M. J. Mohan, M. A. Pierce, A. Marklin, J. Hoerle, A. Murphy,
D. Hogan, P. Thompson, P. Tynan.



Seated: D. Charlier, P. Mueller, A. Blandina, D. Liston, J. Roeper.
Standing: D. Ryan, S. Kernell, M. McAuliffe.



P. Hayes, J. Harrison, P. Flynn, M. Bocklage, D. Lanning,
J. Helmerich, J. Wilkerson, B. Baerveldt.

ORGANIZATIONS





Student Council



Seated: D. M. Lee, S. Michelson, M. M. McCalpin, M. Scandiff.
 Standing: S. Sappington, V. O'Brien, G. Ganser, M. Kingston, E. Vande Walle, T. Fischer.

OFFICERS

Sidonia Michelson	President
Donna Mae Lee	Vice-President
Mary Margaret McCalpin	Secretary
Shirley Sappington	Treasurer

REPRESENTATION

Gloria Ganser	Senior Class President
Therese Fischer	Junior Class President
Polly Coleman	Sophomore Class President
Virginia O'Brien	Freshman Class President
Elaine Vande Walle	Sodality Prefect
Helen Holmberg	Fontbonne Editor
Margaret Kingston	Font Editor
Marjorie Scandiff	Resident Students' President

Sodality Council



First Row: M. A. Coghill, M. M. Coff, M. Bachmann, H. Einig, D. Hendon, Sister Rose Agnes, Moderator, E. Vande Walle.
 Second Row: M. Schumacher, R. Burke, M. L. Echele, M. Wolf, P. McKay, D. McWilliams, M. C. Kelly, M. Scandiff.

OFFICERS

Elaine Vande Walle.....	Prefect
Margaret Mary Coff.....	Vice-Prefect
Marilyn Wolf }	Secretary-Treasurer
Gloria Mennig }	

REPRESENTATION

Patricia McKay.....	Senior Representative
Rosemary Burke.....	Junior Representative
Marian Bachmann.....	Sophomore Representative
Mary Louise Young.....	Freshman Representative
Mary Ann Coghill.....	St. Joseph's Committee
Doris McWilliams }	Apostolic Committee
Mary Catherine Kelly }	
Dorothy Hendon.....	Publicity Committee
Marjorie Scandiff.....	Eucharistic Committee
Mary Le Echele.....	Our Lady's Committee
Mary Schumacher.....	Catholic Literature Committee

C. S. M. C.



First Row: P. Ferry, J. Spillane, D. Daly, L. Wuellner, V. McGrath, N. Lanza.
Second Row: M. McManus, J. A. Scott, M. Naxera, L. Camper, E. Neumann, L. Lenski.



First Row: Sister Teresa Mary, Moderator, E. Vessell, M. J. Smith, N. Duerr, B. Deiters, B. Ladd.
Second Row: H. Einig, M. Byrnes, J. A. Monnig, G. Alfert, M. Bachmann, M. Reiser.
Third Row: M. L. Lennemann, K. Bocklage, M. Graff, M. Delabar.



Marie Stasi, President; Marjorie Maertz, Secretary-Treasurer; Kathleen Roetto, Vice-President.

Catholic Students' Mission Crusade . . . "Going, therefore, teach ye all nations" . . . the foreign fields . . . the harvest at home . . . "prayer and sacrifice" . . . spiritual backers . . . material aid . . . tag days . . . Father Helmsing's plea . . . "Who is working on the missions" . . . the prayer marathon . . . cancelled stamps . . . mission bulletin board . . . the Lenten goal . . . Sister Anne Catherine's visit . . . the Hawaiian field . . . true apostolic spirit.

Legion of Mary



T. Holbrook, M. A. Pierce, J. A. Scott, M. Naxera, P. Van Sant, Sister Rose Genevieve, Moderator of Our Lady of Good Counsel, D. Ryan, M. Hergenrother, M. Reiser, J. Bass.



Seated: D. Hendon, M. Vogt, M. Bachmann, E. Vande Walle.

Standing: J. Harrison, N. Costello, J. Helmerich, T. Fischer, J. Chardin, Sister Rose Agnes, Moderator of Our Lady of Fontbonne, D. Hickey.

Bring Mary to the world . . . the world to Mary . . . the praesidia . . . Our Lady of Fontbonne . . . Our Lady of Good Counsel . . . personal sanctification . . . prayer for mankind . . . social case work . . . St. Elizabeth's mission . . . Sunday morning catechism . . . St. Malachy's . . . nursery school . . . Stella Maris . . . Catholic literature . . . inspiration from Miss Cox . . . probation week . . . reception . . . Father Anler's words . . . being Mary-like.



Seated: Rayda Perez, Marie Stasi, Presidents.
Standing: Mary McManus, Eulalia Springman, Vice-Presidents.

I. R. C.



First Row: R. Leahey, R. Bussmann, M. Kingston, J. Ruoff, D. M. Lee.
Second Row: T. Munkres, M. Zeis, M. Guelker, E. Neumann, N. Byrne, A. Manscur, A. M. Clemens, R. M. Storm.



D. McWilliams, P. Dolan, K. Sargl, G. Vessell, G. Ganser, G. Vogel, G. Monnig, L. Benz, B. Thien, A. Manscur, Dr. W. Van Taay, Moderator.



Mary Ellen Roetto, Vice-President; Patricia Ferry, President; Mary Catherine Kelly, Secretary; Jane Sly, Treasurer.

World problems . . . Christian solutions . . .
Te Deum forums . . . United Nations' conferences at Mizzou . . . dinner meetings . . . international atmosphere . . . the Orient . . . Garavelli's . . . Conrad's Cupboard . . . the sociological convention . . . the trip to Jefferson City . . . state capitol . . . the governor . . . Justice Douglas . . . contributions at the penitentiary . . . charity . . . community chest drive . . . international music program . . . Father Conway on the "Atomic Bomb" . . . competent leaders, intelligent citizens.

Red Cross



First Row: P. Brinsa, S. A. De Lisle, Sister Mary Martha,
Moderator, J. Molumby, J. Murray.
Second Row: E. Byrne, J. Dettenwanger, G. Ganser.



M. Scandiff, M. Maertz, T. Holbrook, M. Zeis, R. Leahey,
H. Einig.

The college unit . . . student participation . . .
an international cause . . . knitted footies for
New Haven . . . dropped stitches . . . the trip to
Scott Field . . . entertaining the convalescents
. . . satisfaction from helping others . . . Teresa
Reid represents at the Chicago convention . . .
exchange of ideas . . . Miss Harris advises . . .
drive for paper, pencils, notebooks . . . aid to
the Europeans . . . baking cookies for Scott . . .
glamor of the motor corps . . . the annual March
drive . . . generous giving.



Sara Sansone, Vice-President; Rosemary Stapenhorst,
Secretary; Teresa Reid, President.

Phi Beta Chi

M. Loving, V. McGrath, H. Koutsoumpas, M. J. Reedy, R. Burke, M. Schumacher, M. McManus, Sister Catherine de Ricci, Moderator, H. Holmberg, G. Ganser, M. Maertz.



Mary Lou Streit, Secretary; Janet Spillane, Treasurer; Kathleen Roetto, President; Rose Marie Storm, Vice-President.

Physics, biology, chemistry . . . Missouri Academy of Science meeting . . . "Pictures Come to Life" . . . "Rh and You" . . . the chlorophyll movie . . . science open house . . . slides . . . demonstrations . . . exhibits . . . layman questions . . . professional answers . . . "Color as a Tool" . . . chick embryos . . . smoked kymograph drums . . . gallery of Catholic scientists . . . freshman awards . . . wonders of science . . . proof of the Maker.

First Row: N. Quirk, J. Dettenwanger, C. Pechman, N. Byrne, P. Meyer.

Second Row: A. Mansour, G. Monnig, A. Graupner, B. Thien.





Home Economics Club

C. Hummel, M. Jennings, M.
M. Coff, R. Lamwersiek, P.
McKay, B. Houlehin, V.
Blaes, M. Naxera, M. Dela-
bar, L. Brantley.

Plans for the Christian home . . . club initia-
tion . . . "spirit of home economics" . . . lighted
candles . . . annual Christmas project . . . lay-
ettes for poor families...dinner for the alumnae
. . . open house, third floor science . . . Christ-
mas goodies . . . magazine subscriptions . . .
the taffy pull . . . cake sales . . . preparation for
the future . . . the home, strength of the nation.



Mary Schumacher, Secretary; Kathryn Sargl, President;
June Bass, Vice-President; Bernadine Thien, Treas-
urer.



R. Burke, J. Tracy, G. Monnig,
D. Hendon, D. McWilliams,
E. Vande Walle, C. Pech-
man, E. Springman, M.
O'Keefe, T. Fischer.

Modern Language Club



Rayda Perez, Vice-President; Mary Elizabeth Petrequin, President; Dorothy Daly, Treasurer; Patricia Ferry, Secretary.

Oui, oui . . . si, si . . . parlez-vous francais . . . no es verdad . . . foreign tongues . . . strange customs . . . other cultures . . . appreciation programs . . . French, Spanish, German, Italian . . . Pat Ferry lauds Cervantes . . . Claudel's Tidings Brought to Mary . . . Clem sings French songs . . . Schiller's verse . . . Goethe . . . Jo Ann Scott's German lyrics . . . senoritas . . . mademoiselles . . . frauleins . . . professors with accents . . . the gift of tongues.

First Row: A. Mansour, J. Spillane, M. Stasi, V. O'Brien, A. Murphy, M. Landwehr.
Second Row: L. Brantley, G. Monnig, M. McManus, J. A. Scott, A. M. Clemens.
Third Row: C. Greco, P. Fitterer, M. E. Roetto, M. Maertz, G. Wand.



Footlights Club

Drama . . . the theatre . . . initiation . . .
the miniature stage . . . becoming a Foot-
light . . . evening meetings . . . Miss Mul-
lins' studio . . . Bal Masque . . . the
masquerade . . . identities unknown . . .
costumes unique . . . the play . . . Christ-
mas on the Village Square . . . Gheon's
gypsies . . . Melchior, Josaphat . . . the
young grandson . . . backstage . . . grease
paint . . . the green room . . . Career Angel
. . . annual Communion breakfast . . . the
art of expression.



Doris Milton, Vice-President; Thelma Munkres, President;
Margaret Tuberty, Treasurer; Mary Loretta Finazzo,
Secretary.

First Row: J. Tracy, M. Henke.
Second Row: J. Ruoff, P. Hayes, M. E. Campion, L. Vitt, Miss Mullins, Moderator, P. Reilly.
Third Row: M. Gratiaa, J. Leritz, M. Bocklage, A. Blandina, J. Heineck, A. Mansour, J. Sly, A. M. Clemens.
Fourth Row: H. Cataldi, P. Murphy, L. Hough.



Glee Club



Lorraine Camper, Secretary; Rosemary Ryan, President;
Patricia Ware, Treasurer.

Music and song . . . radio programs . . . the television broadcasts . . . Russ Severin's music room . . . Panis Angelicus . . . Christmas carols . . . the Sodality party . . . open house at the National Institute . . . entertaining at the Little Sisters of the Poor . . . the Sacred Concert . . . chant in the chapel . . . Stabat Mater . . . a favorite . . . repeat performance at Carondelet . . . records for the Sacred Heart hour . . . assembly program . . . "Mother Goose Suite" . . . the joy of music.

First Row: S. Kernell, P. Ferry, H. Cataldi, M. L. Young, J. Davison, Sister Mary Antone, Moderator.
Second Row: D. Ryan, R. Bussmann, J. A. Scott, T. Holbrook.
Third Row: R. Toeppen, J. Rabe, D. Schelly.

First Row: J. Chardin, M. Landwehr, M. Reiser, M. Graff, P. Van Sant.
Second Row: A. M. Clemens, E. Vessell, G. Vessell, M. Loving, D. Hendon, E. Roehrig.
Third Row: D. Lipic, B. Meyer, D. Garcia, J. Helmerich, B. Ladd.



Sigma Beta Mu

Music lovers . . . pianists . . . violinists . . . sopranos . . . appreciators . . . Monday evening meetings . . . the recital room filled with talent . . . solos . . . duos . . . ensembles . . . the Christmas program . . . familiar carols . . . favorite melodies . . . listening to the masters . . . modern music . . . Cecile Staub Genhart . . . Swiss pianist . . . the Chopin medley . . . encores . . . the organ fund . . . the high school music festival . . . the picnic in May . . . appreciation of the finer things.



Theodora Holbrook, Vice-President; Lorraine Camper, Treasurer; Patricia Ware, Secretary; Anne Marie Clemens, President.

First Row: L. Lenski, J. Dettenwanger.
Second Row: J. Chardin, N. Lanza, M. E. Petrequin.
Third Row: J. A. Scott, M. Guelker, T. Holbrook.



H. Cataldi, A. Cataldi, P. Ware, R. Ryan, Sister John Joseph, Moderator, J. Davison, D. Garcia, H. Einig, D. Ryan.



Delta Phi



M. L. Lennemann, J. McCartney, R. M. Storm, R. Leahey, D. McWilliams, M. C. Kelly, J. Davison, Miss Troemel, Moderator, B. Beffa, D. Hendon, E. Vande Walle, M. A. Coghill.



B. Herman, J. Ferrario, M. Hergenrother, T. Fischer, P. Fitterer, T. Munkres, M. Naxera, D. Milton, J. Ruoff.



Marian Merello, Treasurer; Rosemary Leahey, Secretary; Doris McWilliams, President.

Art . . . pure and practical . . . the artistic and the "just interested" . . . craft lovers . . . work meetings . . . always refreshments . . . the book covers . . . faces for stuffed animals . . . button-eyed elephants . . . picture cards . . . cutting and pasting . . . textile painting . . . Kit's kitten . . . Leanna's clay model . . . Bohemian supper . . . invitations unusual . . . the time-honored menu . . . dripped candles . . . solemn ceremony . . . the art bazaar . . . old masters . . . moderns . . . art and beauty.

Poetry Club



First Row: A. M. Clemens, K. Nelson, M. DuBois, R. M. Storm, J. Sly, D. Hickey, J. Ruoff, M. Carey.
Second Row: M. C. Kelly, M. Kingston, K. Owen, Miss Mullins, Moderator.

Verse . . . expression of ideals . . . exchange
of thought . . . Sunday afternoon gatherings
. . . roll call . . . a method unique . . . favorite
lines . . . original works . . . Clem's "The Dying
Tree" . . . Katherine's "Ultra Harmonies" . . .
the college anthology . . . Cornelia Otis Skin-
ner's interpretations . . . the picture quiz . . .
Herbert Marshall's "Snow Goose" . . . field trips
. . . the Eugene Field house . . . Gallery of Liv-
ing Catholic Authors . . . readings . . . verse of
value . . . the language beautiful.



Jane Ruoff, Vice-President; Katherine Owen, President;
Anne Marie Clemens, Secretary-Treasurer; Rose
Marie Storm, Program Director.

Font



L. Pope, A. Graupner, D. Henschke, M. DuBois, J. Dettenwanger, M. Kingston, S. A. DeLisle, M. M. Coff, T. Reid.

STAFF

Mari Kingston	Managing Editor
Marjorie Scandiff, Sue DeLisle	City Editors
Dorothy Daly	Copy Editor
Sue DeLisle, Joan Dettenwanger	Feature Editors
Teresa Reid	Fashion Editor
June Kronsbein	Sports Editor
Joan Dettenwanger	Picture Editor
Mary Alice Steuber, Patricia Mueller	Business Managers
Ann Graupner	Circulation Manager
Betty Beffa, Louise Pope	Artists
Jane P. Rahn	Faculty Advisor

REPORTERS

Gerry Alfert	Marilyn Haley	Mary Ann Pierce
Joan Altman	Dorothy Hickey	Patricia Van Sant
Millie Chulisk	Rita Karpel	Jackie Wilkerson
Jo Haley	Jane Keough	Marilyn Wolf

Fontbonne



J. Tracy, M. M. McCalpin, H. Holmberg, G. Vessell, M. A. Coghill.

STAFF

Helen Holmberg	Editor
Mary Ann Coghill	Feature Editor
Jane Tracy	Photo Editor
Georgia Vessell	Business Manager
Mary Margaret McCalpin	Advertising Manager
Francis W. Kinkel	Faculty Advisor

STAFF ASSISTANTS

ADVERTISING

J. Barthelme, V. Blaes, J. Bugg, P. Coleman, M. J. Gratiaa, J. Haley, H. Koutsoumpas, R. Lechey, M. A. Pierce, L. Pope, S. Sappington, R. M. Storm, M. A. Stueber, M. Vogt.

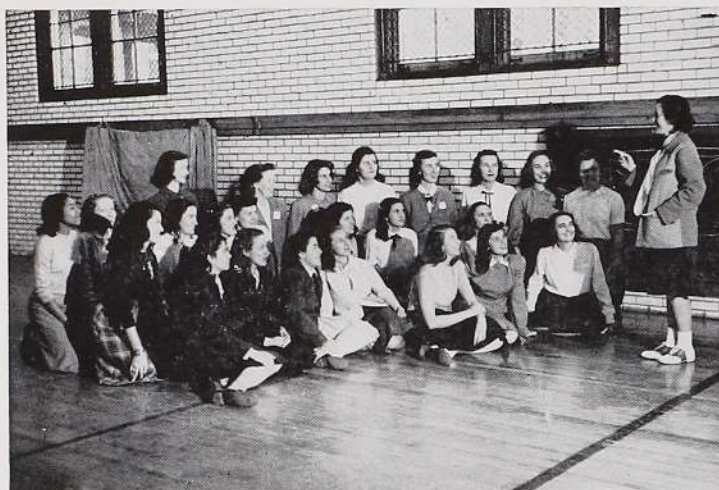
FEATURES

M. DuBois, D. Henschke, J. Nolan, M. J. O'Brien, J. Ruoff, K. Roetto.

PHOTOGRAPHY

J. Nolan, M. J. Reedy, M. L. Streit.

F. A. A.



First Row: H Koutsoumpas, M. L. Streit, J. Tracy, M. Maertz, M. Kingston, J. Kronsbein, J. McCartney, Miss Willis, Moderator.
Second Row: F. Foster, D. Hogan, K. Siromas, M. Porporis, P. Dolan, L. Benz, G. Ganser.
Third Row: L. Brantley, M. Loving, M. J. Crean, V. Alexander, T. Fontana, S. George, D. Schelly, G. Monnig, G. Vogel, B. Thien.



First Row: S. Sappington, V. Blaes, P. Murphy, R. Rechtiem, B. Lucchesi, M. M. Coff, L. Feldhaus, B. Eifert, J. Wiss, J. Stagoski.
Second Row: R. Stapenhorst, B. Roer, B. Quick, P. Coleman, K. Lavin, D. M. Lee, C. Frisella, M. Graff, M. Delabar.
Third Row: M. Veidt, J. Barthelme, D. Ryan, V. O'Brien, J. Ostertag, M. J. O'Brien, M. A. Pierce, A. Murphy, B. Baerveldt, S. Michelson, J. Wilkerson.



First Row: J. Keough, J. Leritz, M. Gratiaa, M. Miller, B. Deiters, B. Ladd, J. Chardin, R. Toebben, M. M. McCalpin.
Second Row: J. Rabe, M. Boll, M. Burchfiel, M. Vogt, H. Einig, H. Holmberg.
Third Row: M. Steins, M. Byrnes, P. French, J. A. Monnig, G. Alfert.

Sports fans . . . activities . . . Penny Circus . . . under the big top . . . laughing clowns . . . freak show . . . collecting pennies . . . the freshman piggy bank . . . the coronation . . . Moe Miller reigns . . . escorted by Jim Hearn . . . decorations droop . . . clean-up committee . . . mountains of pennies to count . . . the after-circus party . . . food aplenty . . . class tournaments . . . ping-pong championship . . . field day . . . athletic banquet . . . numerals, letters, sweaters . . . sportsmanship.



Patricia Mitchell, Treasurer; Eleanor Byrne President; Mary Ann Coghill, Vice-President; Mary Jeanne Reedy, Secretary.

Varsity Basketball



Seated: M. J. Reedy, M. Boll, M. L. Streit, R. Staphenhorst, J. Haley, M. M. Coff.

Kneeling: C. Higgins, P. Coleman, M. Miller, J. Leritz, M. Maertz.

Standing: J. Wilkerson, H. Koutsoumpas, M. Steins, M. Vogt, P. Mitchell, B. Roer, B. Baerveldt, B. Lucchesi, M. Veidt.

Basketball season . . . the team . . . coach and assistant coach . . . loyal rooters . . . birth of the Pep Club . . . cheer practice . . . FontBunny . . . blazers and beanies . . . hoarse cheer leaders . . . "Tell Them That We're from Fontbonne" . . . bus ride to LeClerc . . . we shine tonight . . . Battery A . . . T. H. after the game . . . the faculty challenges . . . the team is honored . . . yea purple, yea gold . . . Fontbonne spirit.



PEP CLUB OFFICERS: Peggy Murphy, Vice-President; Patricia Van Sant, Treasurer; Rosalyn Rechten, Secretary; June Kronsbein, President.



Kneeling: P. Hayes, J. Nolan, V. O'Brien, M. M. McCalpin, M. Kingston.

Standing: E. Murrill, K. Siromas, D. Schelly.

EVENTS





Calendar



SEPTEMBER

Registration



OCTOBER

Penny Circus

College Day



NOVEMBER

Sodality Reception

Barn Dance

Calendar

DECEMBER

Homecoming

Sodality Party



JANUARY

Prom

Retreat



FEBRUARY

Key Day



Calendar



MARCH

Assembly

Science Open House



APRIL

Horse Show

Musical



MAY

Picnic

May Day



Sidonia Michelson crowning the May Queen, Elaine Vande Walle

Sponsors

Dr. and Mrs. E. J. Beckett
Mr. and Mrs. Joseph H. Benz
Mr. Paul Blandina
Miss Aleen B. Block
Mrs. George D. Brantley
Mr. and Mrs. O. S. Bugg
Mr. and Mrs. Eugene Calcaterra
Mrs. Myron P. Camper
Mr. Victor J. Clemens
Mrs. Tom Daly
Miss Madeleine Dawkins
Mr. and Mrs. C. A. Dettenwanger
Mr. and Mrs. Edward Dillon
Mrs. Flora E. Duerr
Mr. and Mrs. D. J. Ferry
Mr. and Mrs. Clarence C. Fitterer
Miss Phyllis Fitterer
Mr. Patrick J. Gibbons
Mr. and Mrs. Fred Graff
Mr. and Mrs. V. J. Hayes
Mr. and Mrs. A. W. Hendon
Mr. and Mrs. John J. Henschke
Mrs. M. J. Hickey
Mr. and Mrs. Robert L. Holbrook
Mrs. Loretta Holmberg
Mr. and Mrs. A. L. Houlehin
Mr. Robert F. Imbs
Mr. and Mrs. J. G. Koncen
Dr. and Mrs. Wm. V. Koutsoumpas
Mr. and Mrs. Louis Landwehr
Messrs. H. H. and C. H. Langenberg
Mr. and Mrs. M. J. Lawlor
Dr. and Mrs. F. X. Lenski
Miss Margaret Lunsman
Mr. and Mrs. Robert J. Lunt
Mr. and Mrs. George A. McCalpin
Miss Mary Margaret McCalpin

Sponsors

Mrs. and Mrs. David J. McKay
Mr. and Mrs. James Manning
Mr. and Mrs. T. Perez Meri
Mr. and Mrs. Fred Michelson
Mr. Fred Michelson, Jr.
Miss Sidonia Michelson
Mrs. F. W. Miles
Mr. and Mrs. J. L. Miller
Mr. and Mrs. Robert F. Mitchell
Mr. and Mrs. Frank Molumby
Miss Mary Joy Molumby
Mr. and Mrs. J. B. Monnig
Mr. and Mrs. L. W. Munkres
Mr. Fred Naxera, Jr.
Mr. and Mrs. Jos. H. Neumann
Mr. and Mrs. James E. Nolan
Mr. and Mrs. Harry J. Petrequin
Mr. and Mrs. Wm. O. Pope
Mrs. G. E. Quick
Mr. and Mrs. Wm. A. Reedy
Reinholdt & Gardner
Mr. and Mrs. Adolph Rosenberg
Mr. and Mrs. W. C. Ruoff
Mr. Walter P. Ryan
Mr. and Mrs. E. G. Sappington
Mr. and Mrs. B. J. Schumacher
Mr. and Mrs. Leo J. Sly
Mr. and Mrs. John M. Storm, Sr.
Mr. and Mrs. George O. Streit
Mr. John S. Stueber
Mr. and Mrs. Bernard A. Thien
Mr. and Mrs. Sim C. Tracy
Miss Penelope Vassely
Miss Vita Viviano
Mr. and Mrs. A. H. Vogel
Miss Mary Rita Wahlert
Mr. A. J. Wiss
Mr. and Mrs. A. J. Wuellner
Mr. and Mrs. P. M. Zimmermann

Patrons

Miss Alice Louise Adams
Mr. and Mrs. Frank J. Adams
Mr. and Mrs. Harry Adam
Mr. and Mrs. J. G. Alexander
Miss Virginia Alexander
Mr. and Mrs. George Ardiccioni
Mrs. Anna Bachmann
Master Tracy Beckett
Mr. Harry F. Beckmann
Dr. and Mrs. Robert B. Beckmann
Miss Louise Bernice Benz
Miss Agnes Blandina
Miss Lucille H. Brantley
Mr. and Mrs. John Brownrigg
Miss Jane Bugg
Mr. and Mrs. John Burke
Mr. and Mrs. James M. Canavan
Mr. and Mrs. A. A. Christophel
Mr. Leo R. Clooney
Mr. and Mrs. Edw. J. Coff
Mr. and Mrs. Earl E. Coghill
Miss Mary Ann Coghill
Mr. and Mrs. L. B. Crean
Mr. and Mrs. J. W. Delabar
Miss Mary Jane Delabar
Miss Joan Dettenwanger
Miss Helen Marie Dillon
Mr. and Mrs. Henry Duncker
Mr. and Mrs. Chas. M. Early
Miss Mary Le Echele
Mr. and Mrs. T. J. Echele

Mr. and Mrs. A. J. Feldhaus
A Friend
Miss Christine Frisella
Mr. and Mrs. L. W. C. Frohardt
Miss Marilyn Graff
Miss Marceline Guelker
Mr. and Mrs. Edw. M. Harrington
Miss Pat Hayes
Mr. and Mrs. John Hayward
Miss Dorothy Hendon
Mr. and Mrs. C. D. Heitmeier
Miss Dorothy F. Hickey
Miss Hilda Hiemenz
Miss Helen Holmberg
Mr. Milton Holmberg
Miss Elizabeth Houlehin
Miss Catherine Hummel
Mr. James Roy Jackson
Mr. and Mrs. W. B. Jennings
Dr. and Mrs. Wm. M. Jones
Miss Betty Ann Kiely
Miss Margaret Ann Kingston
Miss Joan Klutho
Mr. Edward Knop
Mr. and Mrs. P. C. Knowlton
Miss Harriet Koutsoumpas
Miss Betty Ann LaBarge
Mr. and Mrs. Henry F. Lamwersiek
Miss Ruth Lamwersiek
Mr. and Mrs. H. F. Langenberg
Miss Rita Lawlor

Patrons

Mr. and Mrs. Leo C. Liston
Mr. and Mrs. L. C. Long
Miss Gloria Lunsman
Mr. Thomas K. Martin
Mr. and Mrs. George A. McCalpin, Jr.
Miss Helen McCalpin
Mr. and Mrs. J. B. McDonald
Mr. and Mrs. James T. McWilliams
Miss Rhea Mae Metzger
Mr. and Mrs. J. Frank Miles
Mr. Jack Miles
Miss Anne Miller
Miss Marilyn Miller
Mr. and Mrs. A. E. Milton
Miss Doris Milton
Mr. and Mrs. George Moeller
Miss Belle Marie Mullins
Mr. and Mrs. Alfred H. Murphy
Miss Joan Murray
Miss Mary Naxera
Mr. and Mrs. Harold Newkirk
Miss Jane Nolan
Mrs. Guy Norcini
Miss Marjorie O'Keefe
Mr. and Mrs. Walter O'Keefe
Miss Katherine Owen
Miss Clara Pechman
Mr. and Mrs. J. J. Pechman
Miss Mary Elizabeth Petrequin
Miss Sallie Rafferty

Mr. and Mrs. John A. Reardon
Miss Mary Jeanne Reedy
Miss Kathleen Roetto
Miss Tine Rosenberg
Miss Colleen Marie Ryan
Miss Rosemary Ryan
Miss Marguerite Sabadell
Miss Shirley M. Sappington
Miss Marjorie Scandiff
Miss Dru Ann Schelly
Mr. and Mrs. Wm. M. Seward
Mr. Edw. C. Seele
Mr. and Mrs. Richard H. Sievers
Miss Jane Sly
Mr. and Mrs. Milton Spilker
Miss Mary Lou Streit
Miss Mary Alice Stueber
Mrs. F. J. Sullivan
Miss Mary Ellen Sullivan
Mr. and Mrs. Paul V. Sullivan
Mrs. S. Thompson
Miss Margaret Tuberty
Miss Mary Tuchschildt
Mrs. B. J. Tynan
Miss Pat Tynan
Mr. Syl. F. Vande Walle
Mr. and Mrs. L. Venturella
Miss Georgia Vessell
Mr. Joseph P. Whyte
Miss Lois Wuellner

Edwyn

Presents

Fontbonne's Most Attractive Graduate of '48



THEODORA HOLBROOK

Distinctive Portraits for the Fontbonne

EDWYN

38 NORTH EUCLID

ROSEDALE 4575

ST. LOUIS

DOLAN CO., REALTORS

6401 MANCHESTER

HILAND 2610

Have You Seen Our Photo Listings?



8019 FORSYTHE BLVD., CLAYTON, MO.

PARKVIEW 0899

SUCCESS TO THE GRADUATES
OF 1948

HACKER &
GRAUPNER

Real Estate

6212 West Florissant
COlfax 8888

Special Order Work

CHestnut 0090

MONTI JEWELRY
COMPANY

School Rings . Pins . Medals

531 ARCADE BUILDING
ST. LOUIS, MO.

TOOLS AND SUPPLIES, Inc.

Machine Shop and Industrial Supplies

ST. LOUIS, MO.
Phone, FRANKLIN 3370

INDIANAPOLIS, IND.
Phone, RILEY 5631

*Compliments
of*

TOWN HALL

6736 CLAYTON ROAD

Phone, GARfield 6297

Expert

OPTOMETRISTS and OPTICIANS

Dr. Alois A. Winterer
Dr. George A. Winterer
Dr. Jerome A. Kippenberger

*Eyes Scientifically Examined and Glasses
Made to Correct All Defects of the Eye*

202 North Seventh (Near Pine)
ST. LOUIS

DAVID ZUCKER

NO BRANCH STORES

Flowers . . . Gifts

8127 Maryland Ave., Clayton, Mo.
DElmar 1517

Best Wishes for '48

NAN
EDDIE
ELLEN
LEE
GINGER
LOIS

Phillips 66 Gas . Oils . Lubricants

LEIGHTON SERVICE
STATION

Big Bend and Clayton

CABANY 9105

Lee Tires

Batteries

DUESEN
SPORTSWEAR

ALL DESIGNS ARE
ORIGINAL

BY

DUESEN

A Name of Distinction

2207 SOUTH 39TH STREET
PROSPECT 2568

5464 GRAVOIS
PLATEAU 6951

RUBBER PRODUCTS CORP.

*Cork . Rubber . Asbestos and Composition
Gaskets*

Belting . Hose . Packing . Rubber Specialties

3144 OLIVE STREET

Phone, FRanklin 0818

St. Louis 3, Mo.

Give Your
EYES

*The Special Care This Priceless
Possession Deserves*



610 OLIVE
CHestnut 9410

518 NORTH GRAND
JEfferson 5292

Guild Opticians

**J. M. DONLEY
Truck Service Co., Inc.**

Exclusive Truckers of
Procter & Gamble Products

1523 BUCHANAN
CHESTNUT 1316

Love and Kisses, Seniors!

Margie Boll
Polly Coleman
Jo Haley
Kay Lavin

Betty Lucchesi
Peggy Murphy
Jane O'Brien
Rosalyn Rechtien

CAbany 5731

Edward H. Meister
Men's Apparel

8135 MARYLAND
CLAYTON, MO.

Compliments of

A FRIEND

**MISSOURI
STABLES**
INC.

*Rental . . . Boarding
Training*

ADJACENT TO FOREST PARK

Competent Riding Instructors

Only Indoor Riding Arena in St. Louis

SADDLE HORSES BOUGHT AND
SOLD

5200 BERTHOLD
STERling 2408

THANKS, FONTBONNE,

FOR EVERYTHING!

THE SENIORS

BEST WISHES

from

A FRIEND

of the

SENIOR CLASS

Greulich's

Wydown Market

Delicacies

Meats, Fruits, Vegetables

7622 WYDOWN

WE DELIVER

CABANY 7720

QUALITY FABRICS

FOR OVER FIFTY YEARS

Wele's

315 NORTH TENTH STREET

THE RECORD BAR

Sound Recording Studio

Classical and Popular Records
RCA-Victor Radio Combinations
RCA-Victor Television Sets

7801 FORSYTHE BLVD.

At the Corner of Bemiston
DELMAR 3501

THE MOLES

JANE COLLINS
BARBARA DEITERS
MARY JIM GRATIAA
JOAN HARRISON
PAT HAYES
PATSY HAYES
JACKIE HEINECK
JANIE KEOUGH
BEVERLY LADD
DIANNE LANNING
RITA LAWLOR
JEANNE LERITZ

DENISE LISTON
MARY JANE MASSUCCI
MO MILLER
MARY JANE MOHAN
CATHERINE NELSON
SALLIE RAFFERTY
SUSAN REILLY
JOAN STEFFEN
MARGARET STEINS
BARBARA TITUS
PAT VAN SANT
SALLY WHYTE

ELLEN ZIMMERMANN

Best Wishes
of

FONTBONNE
COLLEGE
MOTHERS'
CLUB

East 4446

Bridge 1647

HAUN and
MENGENS

FLOWERS

516-518 MISSOURI AVE.
EAST ST. LOUIS, ILL.

E. V. MENGES

Maurer-Beffa
Realty Company
Inc.
Realtors

Real Estate
Insurance and Rentals
Loans

2311 South Kingshighway
PRospect 3616

322

RAYDA
SCOTTIE
MAC
STASI

Compliments of

The HOUSE OF EARL
RESTAURANT

7816 FORSYTHE

HAPPINESS AND SUCCESS

to the

CLASS OF 1948

from

THE JUNIORS

HERE'S TO THE SENIORS,
THE BEST OF THEM ALL!

THE SOPHOMORES



2814 LOCUST STREET : ST. LOUIS 3, MO.

Telephone . . . JEFFERSON 1776

Encompassing a Wide Scope of Operation in the Building Industry

Sound Conditioning and Acoustics—Acousti-Celotex Acousteel (Perforated Metal) Muffletone . Q-T Ductliner.

Floor and Wall Coverings—Tile Tex . Tuff-Tex . Flexachrome (Resilient Tile) Cleaner . Wax.

Koolshade Sunscreens—Eliminates Awnings and Insect Screens. Keeps Out Sun Heat.

Movable Steel and Wood Partitions—Martin-Parry Metlwal Paneling.

Insulation—Rock Wool Insulation (Pneumatically Installed). Loose Wool and Batts.

JOHN NOOTER
BOILER WORKS COMPANY

Fabricators
of
Steel and Alloy Plate Products
for
Industry

1400 SOUTH SECOND STREET

ST. LOUIS 4, MO.

Compliments

of

John T. Dolan
Motor
Company

7500 BIG BEND ROAD

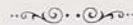
Best Wishes

of

FONTBONNE
COLLEGE
FATHERS'
CLUB

ST. JOSEPH'S ACADEMY

FONTBONNE



A Catholic High School for Girls



SISTERS OF ST. JOSEPH OF CARONDELET

WYDOWN AND BIG BEND BOULEVARDS

ST. LOUIS 5, MISSOURI

BEST WISHES, SENIORS!

from the

CLASS OF '51

EMIL FREI, INC.

Meet Me at

GREENLEA

7801 FORSYTHE

CATHERINE

PEG

MARILYN

RENIE

MARIAN

GUS

JOAN

PAT

DRU

LYNN

BETTY

PEGGY

JO

EVIE

CHRIS

MARY ELLEN

BADER'S

THE HOUSE OF QUALITY

Art Supplies

1112 LOCUST

ST. LOUIS, MO.

Fontbonne College

offers you

a Catholic college education with courses leading to
the degree of Bachelor of Arts, Bachelor of Science,
and Bachelor of Music in the following major fields:

ART

CLASSICAL LANGUAGES

ENGLISH and JOURNALISM

MODERN LANGUAGES

MUSIC

SPEECH and DRAMATIC ART

MATHEMATICS

BIOLOGY and CHEMISTRY

PHYSICAL EDUCATION

GENERAL HOME ECONOMICS

ECONOMICS

CLOTHING and DRESS DESIGN

BUSINESS

INTERIOR DECORATING

EDUCATION

DIETETICS

HISTORY and GOVERNMENT

PHILOSOPHY

PSYCHOLOGY

SOCIOLOGY

FAMILY

*A Catholic Institution for the
Higher Education of Women*

A Corporate College of
ST. LOUIS UNIVERSITY

FONTBONNE COLLEGE

ST. LOUIS 5, MISSOURI

Conducted by the Sisters of St. Joseph of Carondelet