

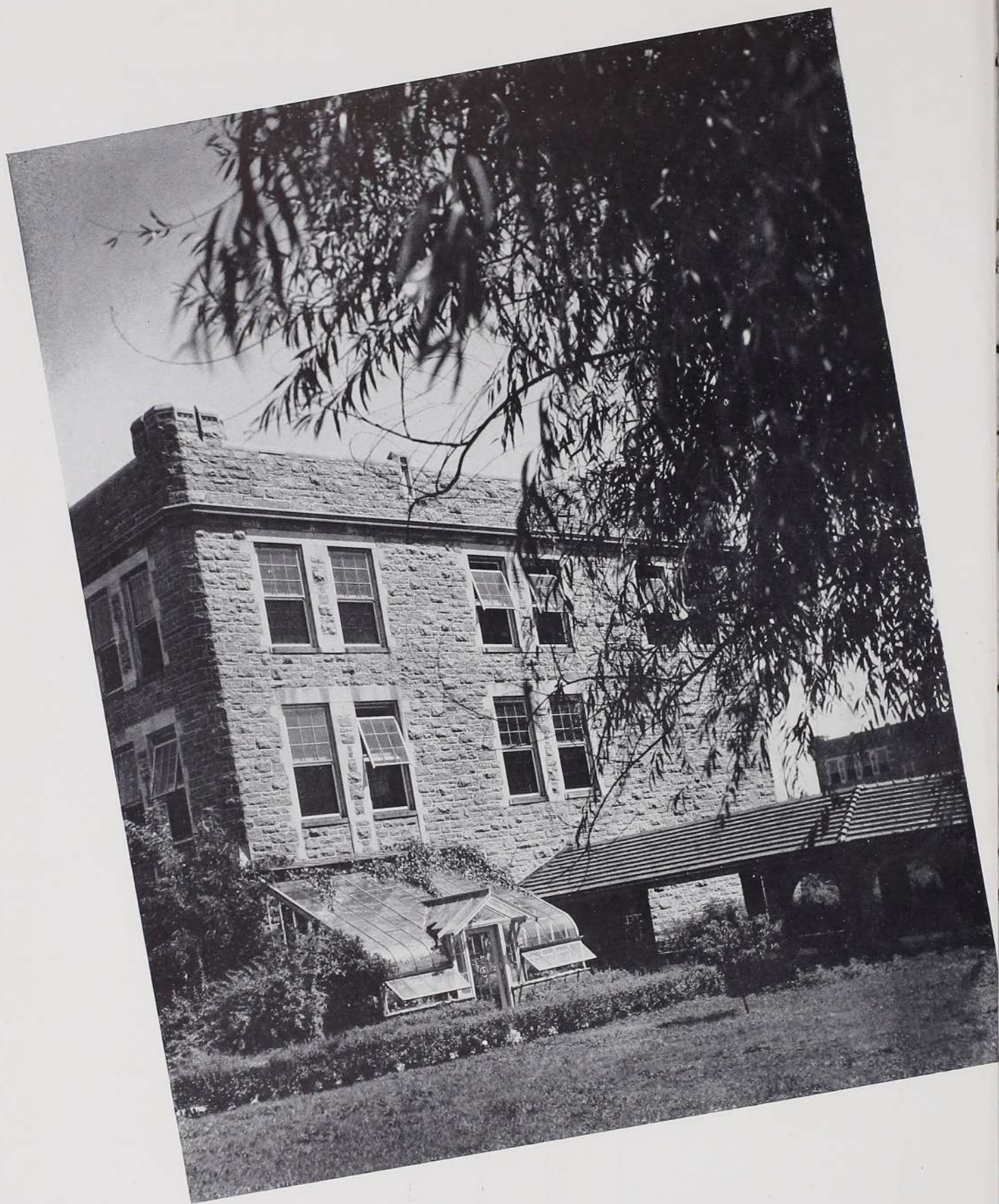


Fontbonne



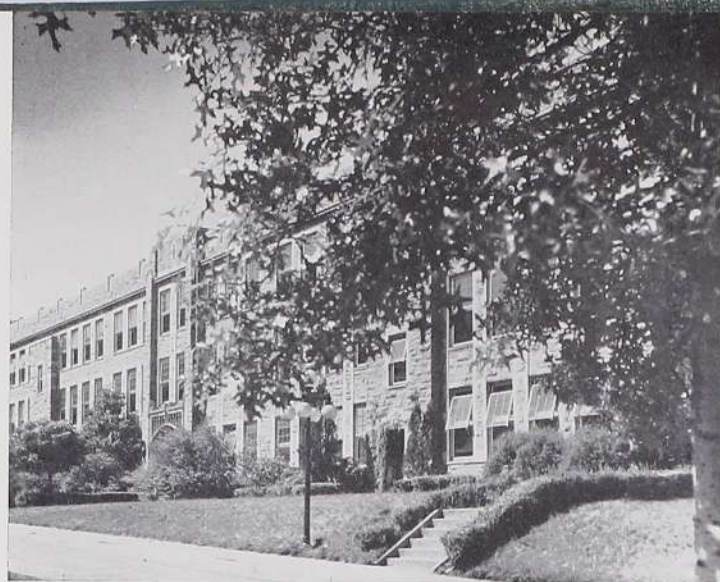
F O N T B O N N E

1 9 4 6



The west arcade in spring.

The Fontbonne for 1946
The Annual Publication
of the Students of
**FONTBONNE
COLLEGE**
St. Louis, Missouri



Fall at Fontbonne.

Our path lighted by the sanctuary lamp, we strive to
follow the way Fontbonne teaches. Her inspiration is that
we learn of Christ, love for Christ, lead with Christ, live
in Christ. Unto this end,

We put on the raiment of wisdom

We seek the divine captive of love

We build in unity and freedom

We live joyously the hours of youth.

PRESENTED BY

ROSALINE SALOME

Editor

LOUISE FAIRCHILD

Business Manager

MONICA L. ROACH

Photography Editor

CHARLOTTE FROMSHON

Feature Editor

MARGUERITE SABADELL

Advertising Manager

Sunlight and shadow—campus snow.





His Eminence
JOHN CARDINAL GLENNON

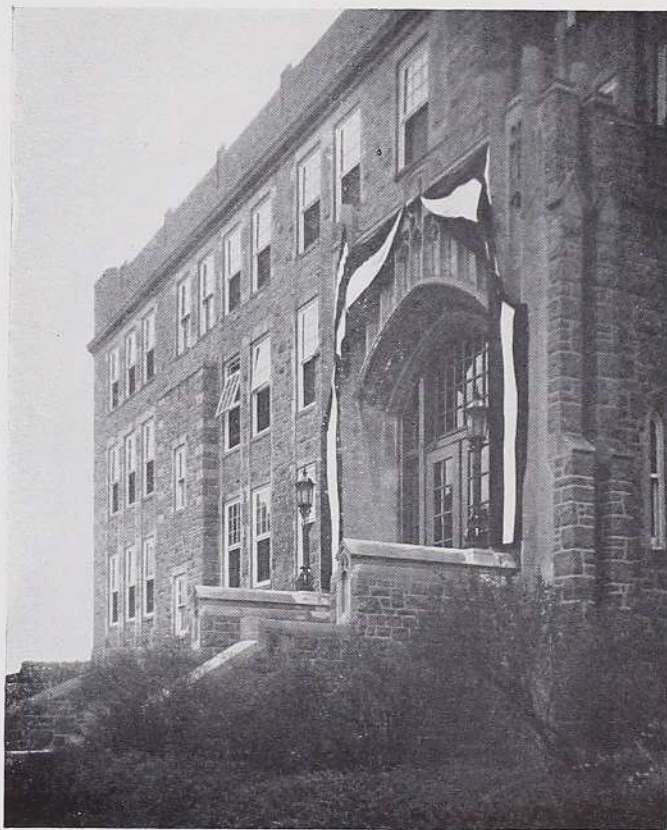
WE LOVINGLY DEDICATE THIS BOOK

To

JOHN CARDINAL GLENNON

"Greater love than this no man hath, that he lay down his life for his friend."

The days of John Cardinal Glennon were marked by the continual and daily laying down of his life for those committed to his spiritual care. Each day his life was given to his God and his flock. Words can add no greatness to his sacrifice. His life more than his death is his silent, ageless monument.



STAFF OF INSTRUCTION

1945-1946

MOTHER MARY BERENICE O'NEILL, C.S.J., A.M., Ph.D.
President, Professor of Education, and Director of the Department

ELEANORA BAER, A.B., Ed.M..... Librarian

SISTER LOUIS JOSEPH BAUER, C.S.J., B.M..... Assistant Professor of Music

SISTER JOHN JOSEPH BEZDEK, C.S.J., A.B., M.M.
Professor of Music and Director of the Department

SISTER SYLVIA MARIE BOOTHBY, C.S.J., A.B., A.M.
Professor of English and Director of the Department

THERESA M. CARMODY, M.S. in Home Economics
Associate Professor of Home Economics and Associate Director of
Home Economics

SISTER SAINT PAUL CHRISTMAN, C.S.J., A.M.
Associate Professor of Modern Languages

SISTER MARY ALPHONSA CARPENTER, C.S.J., A.M..... Instructor in English

ALPHONSE H. CLEMENS, A.M., Ph.D.
Professor of Economics and Sociology and Director of the Department

SISTER HELEN JOSEPH COERVER, C.S.J., M.S.
Instructor in Chemistry and Physics

SISTER JAMES STANISLAUS CREANE, C.S.J., A.M.
Assistant Professor of Mathematics and Director of the Department

SISTER ANNA MECHTILDA DOLIN, C.S.J., A.M.
Professor of Classical Languages

SISTER ROSE GENEVIEVE DOWNS, C.S.J., M.S..... Instructor in Dietetics

JEROME FRANCIS DUGGAN, L.L.M..... Instructor in Business Law

MARTIN LAWLER DUGGAN, B.A.
Instructor in Journalism and Publicity Director

SISTER MARY ATHANASIA DUNNEBACKE, C.S.J., A.M.
Professor of Chemistry

REVEREND EDWARD E. FINN, S.J., A.M., S.T.L..... Instructor in Philosophy

SISTER MARY BERCHMANS FOURNIER, C.S.J., A.M., Cand. Ph.D.
Professor of Modern Languages and Director of the Department

REVEREND WALTER JOHN GALUS, C.R., A.M., S.T.D..... Instructor in Religion

SISTER MARY ANTONE GAYDOS, C.S.J., A.B..... Instructor in Music

SISTER JOSEPH ALOYSIUS GEISSERT, C.S.J., A.M.
Dean, Professor of History, and Director of the Department

SISTER MARY FREDERIC GLASER, C.S.J., A.M. Professor of Modern Languages

REVEREND JULIAN S. GREHAN, C.Ss.R..... Instructor in Religion

THERESA HAFERTEPE..... Social Secretary

STAFF OF INSTRUCTION

1945-1946

- MRS. (E. M.) CATHERINE FITZGIBBON HARRINGTON, A.M.
Director of Personnel and Student Guidance
- PAUL J. JACOBY, Ph.D.....Instructor in Philosophy
- MRS. (R.) EDITH GREIDERER KAUFMAN, A.M.....Instructor in English
- SISTER ROSE AGNES KEYES, C.S.J., M.S.
Assistant Professor of Biology and Director of the Department
- REV. GEORGE A. LODESInstructor in Religion
- SISTER MARY HILDA LORSBACH, C.S.J., A.B.
Assistant Professor of Commercial Science
- SISTER MARY ALBERTA MAAS, C.S.J., M.M.
Assistant Professor of Music Theory
- CARLO MARSELLI, A.M.....Instructor in Italian
- SISTER TERESA MARY McKEOUGH, C.S.J., A.B.....Instructor in Latin
- REVEREND JAMES ALOYSIUS McWILLIAMS, S.J., A.M., Ph.D.
Professor of Philosophy
- BELLE MARIE MULLINS, B.E., A.B., A.M.
Assistant Professor of Dramatics and Director of the Department of
Speech and Dramatics
- SISTER MARY ELEANOR NASH, C.S.J., A.M.Associate Professor of History
- MRS. DOYNE CHRISTINE NEAL, F.A.G.O.....Instructor in Voice
- SISTER MARY ALFRED NOBLE, C.S.J., A.M., Ph.D.
Professor of Psychology and Director of the Department
- REVEREND LEO J. OHLEYER, O.F.M., S.T.D.....Professor of Religion
- SISTER CATHERINE DE RICCI OSTERMANN, C.S.J., A.M.
Professor of Chemistry and Director of the Department
- REVEREND ANTHONY W. POWERS, C.Ss.R.....Instructor in Religion
- SISTER MARGARET JOHN PURCELL, C.S.J., A.M.
Associate Professor of English
- MARGARET CECILIA REICHERT, B.S., M.T.....Instructor in Biology
- SISTER ANASTASIA SCHARFENBERGER, C.S.J., A. B.....Instructor in Education
- SISTER MARY MARTHA SCOTT, C.S.J., M.S. in Home Economics
Associate Professor of Home Economics and Director of the Department
- SISTER MARY EDWINA TOBIN, C.S.J., A.M.
Associate Professor of Classical Languages and Director of the Department
- FRANCES TROEMEL, M.S.
Assistant Professor of Art and Director of the Department
- SISTER SUSANNE MARIE VACHON, C.S.J., A.M.
Registrar of the College and Instructor in History
- GWYNETTE CLAUDIA WILLIS, A.B., A.M.
Assistant Professor of Physical Education and Director of the Department

FACULTY

ADMINISTRATION



Reverend Julian Grehan, Reverend W. J. Galus, Reverend George A. Lodes,
Reverend James McWilliams, Reverend A. W. Powers.

Mother Berenice O'Neill, C.S.J., A.M.,
Ph.D.
President

Sister Joseph Aloysius Geissert,
C.S.J., A.M.
Dean

Sister Susanne Marie Vachon, C.S.J.,
A. M.
Registrar

Sister Mary Hilda Lorsbach, C. S. J.,
A.B.
Bursar

Sister Michael Gorman, C.S.J.
Purchasing Agent

Eleanora Baer, A.M., Ed.M.
Librarian



Mr. Carlo Marselli, Miss Eleanora Baer, Miss B. M. Mullens, Miss Gwynette Willis, Dr. Paul Jacoby.

FACULTY

In spite of papers to be corrected, exams to be made up, and lectures to be given, the members of the Fontbonne Faculty enter into almost every phase of campus life. Both collectively and individually the faculty forms the basis not only of academic activities, but of many extra-curricular activities as well.

The forty-nine members of the Fontbonne faculty efficiently staff the numerous departments of the college, which include every field, from Dietetics to Dramatic Art. The field of subjects offered has been gradually widened every year. A recent addition is the initiation of a course in Italian.

The administration of the college is carried on through the offices of the President, the Dean, the Registrar, the Bursar, the Social Representative, and the Personnel director.

Spiritual development is, of course, one of the most important functions of Catholic education. Father Taugher, the college chaplain, is an ardent spiritual director. Daily Mass, frequent



Reverend John J. Taugher

benediction, and occasional services, such as the Stations of the Cross during Lent, are all among the duties which he takes upon himself.

Faculty, Administration, and Spiritual Director—all three—enable Fontbonne to present to its students a well-rounded and well-balanced schedule of educational, cultural, and spiritual activities.



Miss Cecilia Reichert, Mrs. Doyne Neal, Mr. Martin Duggan.



Mrs. Edith Kaufman, Miss Theresa Carmody, Miss Frances Troemel.

WE PUT ON THE RAIMENT OF WISDOM

"Send forth thy light and thy truth: they have conducted me, and brought me unto thy holy hill, and into thy tabernacles . . ."

Ps. 42.

*We have seen the light of wisdom in the eyes of those
who teach;*

We have listened open-hearted to their words.

Love your enemies; do good; judge not;

And turn the other cheek.

A gate is opened for us

And the greater heights above

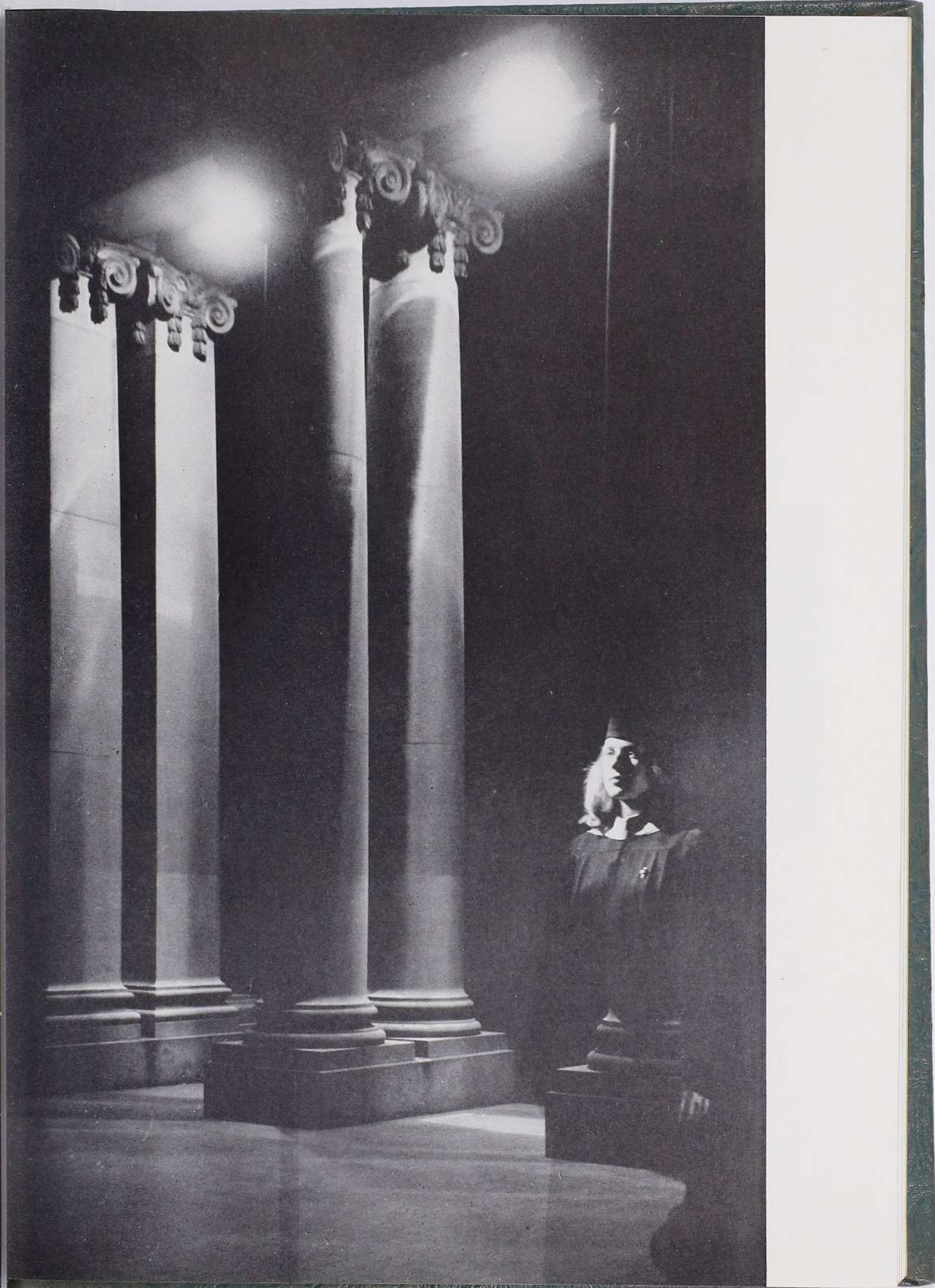
Are lighted by the guides

Who go before.

We have come upon a plateau in our climbing;

We must now go forth alone.

T



S E N I O R S

Helen Carole Abt



"HELEN CAROLE," — trim, statuesque, indolent charm, daring hats, frank humor, pleasant sophistication, script handwriting, **Rebecca**, autumn, sketching trees.

B. S. in Dietetics

Minors: Science and Philosophy

Moberly, Missouri

Moberly Junior College '43 . . . Home Economics Club '44
. . . Sodality '44-'45-'46 . . . Phi Beta Chi '46.

Anne Louise Beasley



B. S. in Biology

Minors: Mathematics and Philosophy

Joliet, Illinois

Class Treasurer '44 . . . Phi Beta Chi '45-'46, Treasurer '46
. . . Glee Club '43 . . . Horse Show '44-'45-'46.

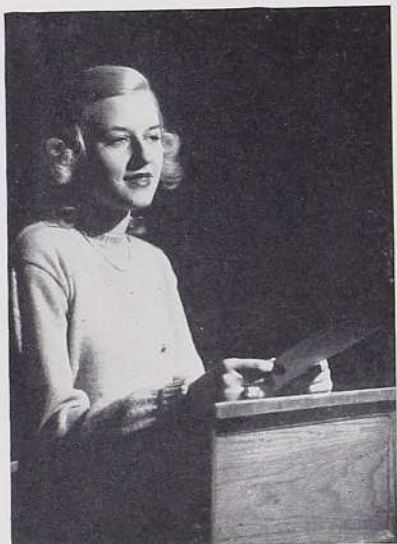
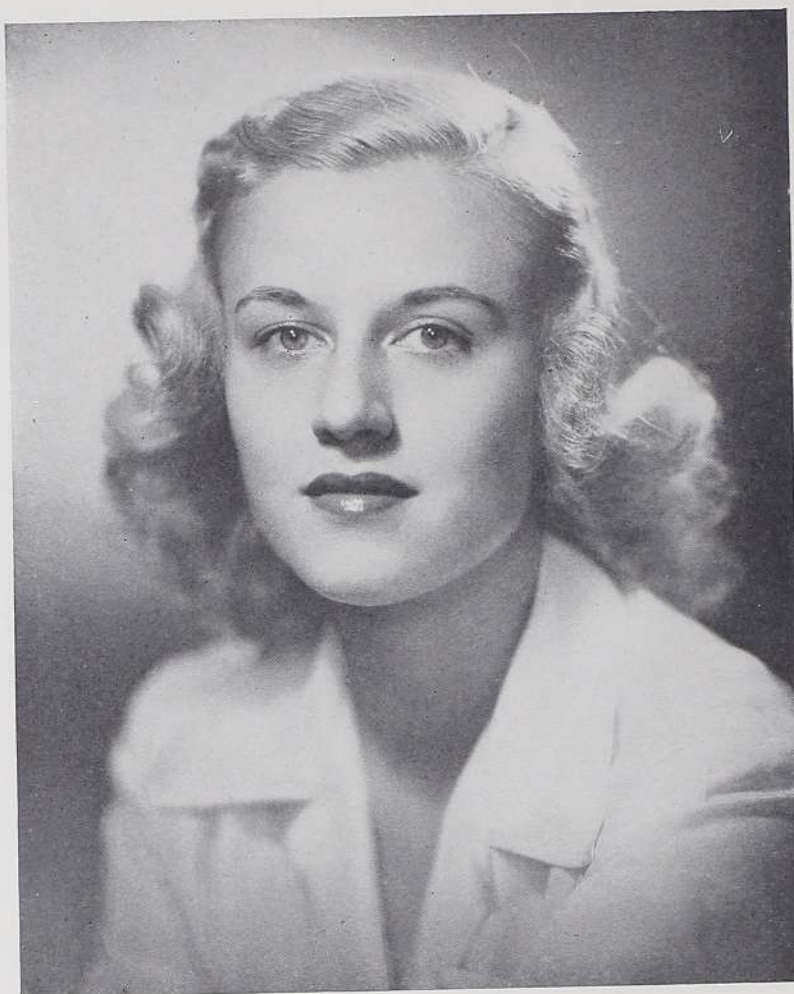
1
9
4
6



"BEASE,"—composure, deliberation, sportswoman, coral, the campus in spring, pastel crepe, willow trees, gardenias, Johnny, **Sonnets from the Portuguese.**

S E N I O R S

Margaret Jeanne Bona



"JEANNE," — competent, self-possessed, formal dinner parties, radio mysteries, excited spectator, deep currents, likeable, white lab coat, romantic music, Scottie.

B. S. in Biology

Minors: Chemistry and Philosophy

Saint Louis, Missouri

Student Association President '46 . . . Class Secretary '45
 . . . Sodality '43-'44-'45-'46 . . . Maid to May Queen '44 . . .
 C. S. M. C. '43-'44-'45-'46 . . . Phi Beta Chi '44-'45-'46 . . .
 Modern Language Club '43-'44 . . . Footlights Club '43-'44.

Jane Marie Buford



A. B. in Economics

Minors: Commercial, English, and Philosophy

Fredericktown, Missouri

Sodality of Our Lady '43-'44-'45-'46, Vice Prefect '46...
 Spiritual Council '43-'44-'45-'46... Legion of Mary '43-'44-'45-'46, Secretary '44, Vice President '45, President '46...
 Social Peace Club '43-'44-'45-'46, Treasurer '42-'43...
 Modern Language Club '44-'45-'46, Vice President '44-'45...
 ...C. S. M. C. '43-'44-'45-'46... Poetry Club '44-'45-'46...
 Sigma Beta Mu '43... Glee Club '46... Intercollegiate
 Sociology Association '46... College Sodality Union
 '43-'45-'46... Maid to May Queen '44.

1
9
4
6



"JANE,"—thoughtful, intense, so well remembered and remembering, Legion of Mary, twilight, picnics, Fontbonne, O. P. R., College Day, Peter's Pantry, "Life With Rosie."

S E N I O R S

Jane Marie Buri



"JANE," — genuine, diligent, appreciative humor, blue formals, jonquils, alto, **Desert Song**, sociology, Sodality Prefect, green and yellow, May Day, spring.



A. B. in Sociology

Minors: Economics and Psychology

St. Louis, Missouri

Sodality '43-'44-'45-'46, May Queen '46, Prefect '46, Secretary '45 . . . Spiritual Council '44-'45-'46 . . . **Fontbonne** '44-'45, Advertising Manager '45 . . . Student Council '46 . . . Student-Faculty Committee '45 . . . Classical Club '44-'45, Treasurer '45 . . . C. S. M. C. '43-'44-'45-'46 . . . F. A. A. '43-'44-'45-'46 . . . Glee Club '43-'44-'45-'46 . . . Social Peace Club '45-'46 . . . **Font** '44-'45 . . . Press Club '44-'45 . . . Modern Language '44-'45 . . . Legion of Mary '46.

June Lois Cassidy



B. S. in Biology

Minors: Chemistry and Philosophy

St. Louis, Missouri

Class Vice President '46 . . . Sodality '43-'44-'45-'46 . . . Phi
Beta Chi '45-'46 . . . **Font** '45 . . . Press Club '45-'46 . . .
Modern Language Club '46.

1
9
4
6



"CASS," — earnest, petite,
quiet, obliging, eloquent ex-
pression, Starlight Roof,
cocker spaniels, riding in the
rain, dreamer, romance.

SENIORS

Patricia Anne Chandler



"PAT,"—brisk efficiency, emphatic, cooperative, realist, **Rose Marie**, candlelight and proms, letters, Francis, airplanes, western saddles.

A. B. in Economics

Minors: Sociology, English, and Philosophy

Tulsa, Oklahoma

Class Treasurer '46 . . . Social Peace Club '45-'46, President '46 . . . Modern Language Club '45-'46, Secretary '46 . . . Resident Students' Association Secretary '46 . . . Intercollegiate Sociological Association '45-'46, Treasurer '45-'46 . . . F. A. A. '44-'45-'46 . . . Press Club '44 . . . Sodality '44-'45-'46 . . . Classical Language Club '44 . . . **Font** '44 . . . **Fontbonne** '45 . . . C. S. M. C. '46.

Margaret Emma Deck



A. B. in Home Economics

Minors: Chemistry, Education, Biology, Philosophy
Saint Louis, Missouri

Home Economics Club '43-'44-'45-'46, Secretary '46 . . . Phi
 Beta Chi '44-'45-'46 . . . Sodality '43-'44-'45-'46 . . . Daisy
 Chain '45 . . . Delta Phi '43-'44-'45-'46 . . . Press Club '44 . .
Font '44 . . . Red Cross Chairman '46 . . . Glee Club '43.

1
9
4
6



"MAGGIE,"—blonde, attractive, casual clothes, precision, adroitness, reliability, elm trees, storms, knick-knacks, antique jewelry.

S E N I O R S

Patricia Evelyn Donley



"PAT,"—smiling eyes, deep loyalty, simplicity, integrity, **The Masterful Monk**, tennis, catechism classes, "Old Man River," autumn, morning.

A. B. in Sociology

Minors: **Philosophy and Chemistry**

St. Louis, Missouri

Glee Club '43-'44-'46 . . . Sodality '42-'43-'44-'46 . . . C. S. M. C. '42-'43-'44-'46 . . . Modern Language Club '46 . . . F. A. A. '42-'43-'44-'46 . . . Social Peace Club '46 . . . Legion of Mary '46.

Louise d'Avignon Fairchild



A. B. in Sociology

Minors: Psychology and Economics

Idaho Springs, Colorado

Class President '43-'44 . . . **Fontbonne** '43-'44-'45-'46, Business Manager '46 . . . **Fcnt** '43-'44-'45-'46, Business Manager '45 . . . Student Council '43-'44 . . . Sodality '43-'44-'45-'46 . . . C. S. M. C. '43-'44-'45-'46 . . . Legion of Mary '43-'44 . . . Press Club '43-'44-'45 . . . Social Peace Club '43-'44-'45-'46, Secretary '44 . . . Daisy Chain '43 . . . Basketball Team Manager '43-'44 . . . Red Cross Unit Treasurer '45 . . . Poetry Club '46.

1
9
4
6



"CHILD," — crusader, magnetism, shining swords, intricate patterns, Guardian Angel settlement, Tschaikowsky, walking in the rain, **Woman Wrapped in Silence**, train whistles, Carl Sandburg.

SENIORS

Norrine Marie Gibbons



"GIBBY," — ingenuous, unaffected, engaging, Irish setters, deadlines, geniality, light opera recordings, tall dates, T. H., city editor.



A. B. in Sociology

Minors: Psychology and History

St. Louis, Missouri

Font '44-'45-'46, City Editor '46 . . . Press Club '44-'45-'46 . . . F. A. A. '46 . . . Social Peace Club '46 . . . Modern Language Club '44 . . . Sodality '44-'45-'46 . . . C. S. M. C. '44-'45-'46 . . . Poetry Club '44.

Shirley Ann Gleeson



A. B. in Sociology
Minors: Economics and English
Kewanee, Illinois

Rosary College, Riverforest, Ill. '43 . . . Sodality '44-'45-'46
 . . . Modern Language Club '45 . . . Social Peace '46 . . .
 Horse Show '44.

1
9
4
6



"LEE," — self-assurance, non-chalant, practical, chic, February graduate, classics, Rachmaninoff "Prelude in G Sharp Minor", historical novels, Fairchild's Flophouse, horse show.

S E N I O R S

Rita Rose Johans



"RITA," — elegance, striking appearance, sympathetic, unruffled, reserve, slow sentimental music, orderly, capable, dancing, dress design.



B. S. in Dietetics

Minors: Chemistry and Philosophy
Centralia, Illinois

Student Council Secretary '46 . . . Phi Beta Chi '43-'44-'45-'46, Vice President '46 . . . Home Economics Club '43-'44-'45-'46 . . . Sodality '43-'45-'46.

Elizabeth Jeanette Klinge



B. S. in Dietetics

Minors: Philosophy and Science

St. Louis, Missouri

William Woods College '43-'44 . . . Home Economics Club
'45-'46.

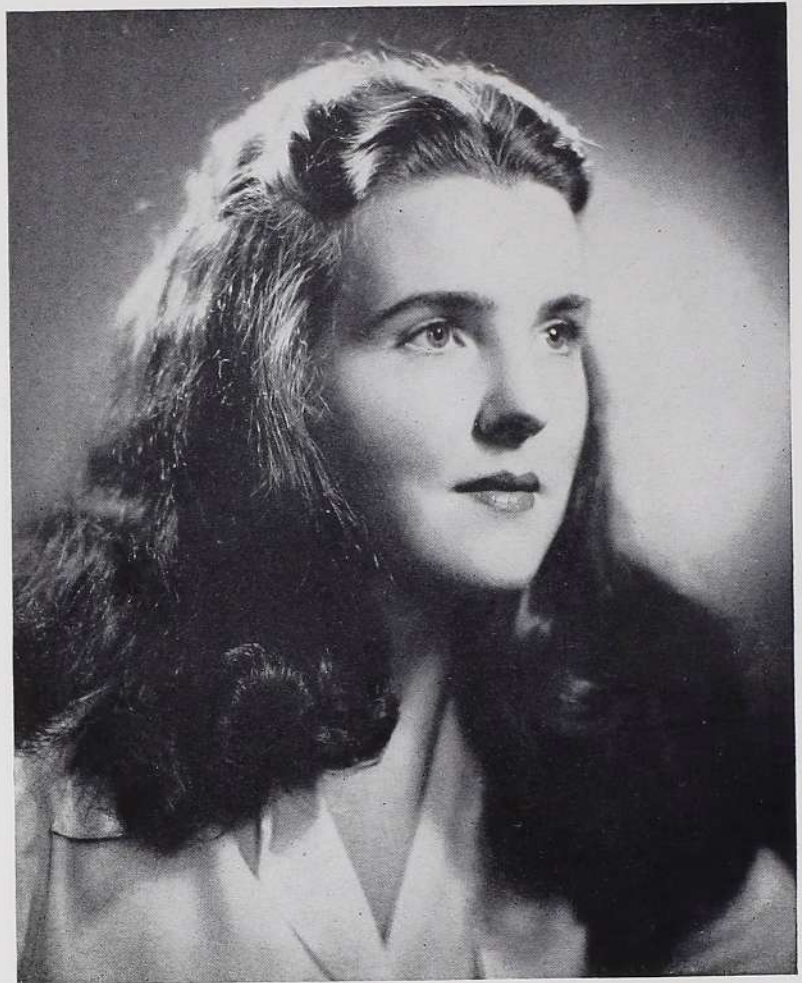
1
9
4
6



"BETTY,"—red roses, Byron,
"Tigress", sport clothes, ba-
nana cream pies, sunny
days, blue evenings, cook-
ing.

S E N I O R S

Rose Bridgid McNamee



"MAC,"—lake-blue eyes, the blarney of Erin, warm generosity, sympathetic, optimist, moody music, sunshine and laughter, good-natured, "Rose of Tralee", Vitamin C.

B. S. in Chemistry
Minors: Philosophy and Biology
Carrahara, Ireland

Class Secretary '44 . . . Modern Language Club '44-'45-'46,
 Secretary-Treasurer '45 . . . Class President '45 . . . Student
 Council Vice President '46 . . . Phi Beta Chi '44-'45-'46,
 President '46 . . . Sodality '43-'44-'45-'46 . . . Maid to Mary
 Queen '44 . . . C. S. M. C. '43-'44-'45-'46 . . . Press Club '46
 . . . Student Council '45-'46.

Mary Jayne Murphy



B. S. in Physical Education
Saint Louis, Missouri

Basketball Captain '46 . . . F. A. A. '45-'46 . . . Press Club
 '43-'44-'45-'46 . . . Delta Phi '46 . . . Sodality '43-'44-'45-'46.

1
 9
 4
 6



"MURPH," — diminutive, intrepid, decisive, St. Louis Browns, green Buick, entertaining, Notre Dame, basketball game, Chicago, "College Rhythm."

S E N I O R S

Marie-Antoinette O'Kane



"MARIETTE," — refinement, soft, modulated voice, pink camellias, "The Raven," determination, "Monastery Garden," formal attire, Indian summer, Cleveland, mist.



B. S. in Dietetics

Minors: Chemistry and Philosophy

Saint Louis, Missouri

Phi Beta Chi '44-'45-'46, Treasurer '45 . . . Sodality '43-'44-'45-'46 . . . Spiritual Council '46 . . . Home Economics Club '44-'45-'46 . . . Red Cross Unit '45-'46 . . . Class Secretary '43 . . . Daisy Chain '43-'44 . . . Glee Club '43-'44-'46.

Joan Louise Petrequin



A. B. in English
Minors: German and Philosophy
Ste. Genevieve, Missouri

Drury College, Springfield, Mo. '43-'44 . . . Glee Club '45-'46 . . . Modern Language Club '45-'46 . . . Sigma Beta Mu '45-'46 . . . C. S. M. C. '45-'46 . . . Poetry Club '45-'46.

1
9
4
6



"JO," — witty, comfortable listener, delicate, idyllic outlook, "Begin the Beguine," bridge in the den, walking, Bill, "Ode to Autumn," Wagner.

S E N I O R S

Colleen Richey



"COLLEEN,"—animated, firm convictions, doll collector, "Scheherazade," Vermont maples, lyric beauty, **Immortal Wife**, "Sea Fever," oriental pearls, "Debby and David."



A. B. in Sociology

Mincrs: Psychology and English

Saint Louis, Missouri

Glee Club '43 . . . Delta Phi '43-'44-'45-'46 . . . Poetry Club '43-'44-'45-'46, Secretary-Treasurer '45, President '46 . . . **Fcnt.** Circulation Manager '45 . . . Social Peace Club '45-'46 . . . Horse Show '43-'44-'45.

Mary Ann Riordan



A. B. in Spanish

Minors: English and Philosophy

University City, Missouri

Class Vice President '45 . . . F. A. A. '43-'44-'45-'46 . . . Glee Club '43-'44-'45-'46 . . . C. S. M. C. '43-'44-'45-'46, Vice President '46 . . . Sodality '43-'44-'45-'46 . . . Maid to May Queen '45 . . . Spiritual Council '44-'45 . . . Modern Language Club '44-'45-'46 . . . Press Club '45.

1
9
4
6



"MARY ANN," — devoted friend, steadfast, kind, Curia meetings, delicious cakes, popular music, ice-skating, friendly people, secretarial work, Spanish.

S E N I O R S

Monica Liston Roach



"MONICA,"—proficient, miniature, methodical, "Naughty Marietta," mystery stories, cooking, Bob, mid-morning snacks, sleeping, baby hair-cuts.



A. B. in English

Minors: Spanish, Philosophy and Journalism
University City, Missouri

Class Secretary '46 . . . **Fontbonne** '43-'44-'45-'46, Photo Editor '45-'46 . . . Press Club '43-'44-'45, Secretary-Treasurer '45 . . . **Font** '43-'44-'45 . . . Glee Club '43-'44-'45 . . . Footlights Club '43-'44 . . . Poetry Club '43 . . . Modern Language Club '44-'45-'46 . . . C. S. M. C. '44-'45-'46 . . . F. A. A. '44-'45-'46 . . . University News Correspondent '44-'45.

Dorothy Jean Robertson



A. B. in Sociology

Minors: History and Psychology

Saint Louis, Missouri

Fontbonne '46 . . . Font '44-'45-'46 . . . Press Club '44-'45-'46
 . . . Sodality '43-'44-'45-'46 . . . Modern Language Club '45
 . . . Social Peace Club '46 . . . C. S. M. C. '43.

1
9
4
6



"D. J.," — animated chatter,
 volatile, candid, amusing,
 carefree, baseball, parties,
 swimming, good dancing
 partners, soft music.

S E N I O R S

Mary Lee Rodegast



"RODIE," — good mixer, verse, lilacs, Ogden Nash, Clash Day, "Cherub," Russian ballet, "322—the Blue Room," Clair de Lune, Stations of the Cross in chapel.

A. B. in Sociology

Minors: Psychology and Speech

Litchfield, Illinois

Class President '46 . . . Legion of Mary '43-'44-'45-'46, President '46 . . . Glee Club '43-'44-'45-'46, President '45 . . . Resident Students' Association Secretary '45, Vice President '46 . . . Student Council '46 . . . Sodality '43-'44-'45-'46 . . . C. S. M. C. '43-'44-'45-'46 . . . Bower Bearer '45 . . . F. A. A. '44-'45 . . . Cheer Leader '44-'45 . . . Footlights Club '43 . . . Social Peace Club '43-'44-'45-'46 . . . Red Cross '45-'46 . . . **Fontbonne** '45-'46 . . . **Font** '45 . . . Inter-collegiate Sociological Club '45-'46.

Margarite Sabadell



A. B. in Economics

Minors: Spanish and Commercial

Saint Louis, Missouri

Glee Club '43-'44 . . . F. A. A. '43-'44-'45-'46, Vice President '45, President '46 . . . Modern Language Club '44-'45-'46, Secretary-Treasurer '45 . . . Sodality '43-'44-'45-'46 . . . Daisy Chain '44-'45 . . . C. S. M. C. '43-'44-'45-'46 . . . Social Peace Club '45-'46 . . . Red Cross Unit '45-'46 . . . **Fontbonne** Advertising Manager '46.

1
9
4
6



"MARGIE,"—sensible, generous, hiking, concerts, "Shalimar," steak at Garavelli's, sun through chapel windows, elevator in Ryan Hall, "Oklahoma," locker 94.

S E N I O R S

Rosaline Mary Salome



"ROSIE,"—Old South's idealism, poetic insight and practical "do-right," May, violets, "God's World," Millay, moon-silvered chapel windows, gold poplar leaves in autumn sunlight, blue shadows on pink granite, Peter's Pantry, O. P. R.

A. B. in English

Minors: History, French, Speech, Education, and Philosophy

Atlanta, Georgia

Fonibonne '43-'44-'45-'46, Editor '46, Feature Editor '45 . . .
Font '43-'44-'45-'46, Feature Editor '45 . . . Resident Students' Association Treasurer '45, President '46 . . . Class Treasurer '45 . . . Student Council '46 . . . Spiritual Council '44-'45 . . . Sodality '43-'44-'45-'46 . . . Glee Club '43-'44-'45-'46 . . . Legion of Mary '43-'44-'45-'46 . . . C. S. M. C. '43-'44-'45-'46 . . . Press Club '43-'44-'45 . . . Poetry Club '43-'44-'45-'46 . . . Modern Language Club '45-'46 . . . Footlights Club '45-'46 . . . Social Peace Club '44-'45-'46 . . . Intercollegiate Sociological Club '46.

Cora Winifred Sauvage



B. S. in Biology
Minors: Chemistry and Philosophy
Spokane, Washington

Holy Name College '43-'44 . . . St. Louis University '45.

1
9
4
6



"COCO," — charming, neat, wholesome, French, symphonies, Burns' poetry, 17th century ballads, medicine, pediatrics, boating, tennis.

S E N I O R S

Margaret Shirley Smith



"SMITTY," — brunette, calm, appreciative, Medart's, Chopin, "Indiscrete," chocolate malts, Fridays, gardenias, green.

B. S. in Dietetics

Minors: Chemistry and Philosophy

St. Louis, Missouri

Red Cross Unit '46, Treasurer '46 . . . Home Economics Club '45-'46 . . . Phi Beta Chi '45-'46 . . . Sodality '45-'46 . . . Daisy Chain '45.

Marilyn Josephine Steuterman



A. B. in Dramatic Art

Minors: Voice, English, and Education

Boonville, Missouri

Rosary College '43 . . . Footlights Club '44-'45-'46, President
'46, Treasurer '45 . . . Glee Club '44-'45-'46 . . . Sigma
Beta Mu '44-'45 . . . Sodality '44-'45-'46.

1
9
4
6



"STEU," — vivacious, effervescent, versatile, dependable, the theatre, pastels, Edna St. Vincent Millay, exotic jewelry, **Carmen**, Anderson's **Elizabeth the Queen**.

S E N I O R S

Kathryn Adele Temm



"KAY," — grace, delicacy, tact, cameo, feathery warm weather, "Flanders Field," knitting, **Hamlet**, Sunday symphonies.

B. S. in Dietetics

Minors: Chemistry and Philosophy

Saint Louis, Missouri

Sodality '43-'44-'45-'46 . . . Daisy Chain '44 . . . Maid to May Queen '45-'46 . . . Delta Phi '44-'45-'46, Secretary '45 . . . Red Cross '45-'46, Secretary '46 . . . Phi Beta Chi '44-'45-'46 . . . Home Economics Club '44-'45-'46 . . . Spiritual Council '44-'45-'46.

Maria Silveria Viejo



A. B. in History

Minors: Sociclogy, Philosophy and Spanish
Bayamon, Puerto Rico

Sacred Heart College, Santurce, Puerto Rico '43-'44-'45 . . .
Modern Language Club '46 . . . C. S. M. C. '46 . . . Legion
of Mary '46 . . . Sodality '46.

1
9
4
6



"MARY,"—sparkle, animated
gestures, vitality, Spain,
rumbas, social work in
Puerto Rico, Fontbonne pen-
nants, romantic poems,
waltzes, Carmen Miranda.

S E N I O R S

Gloria Lee Walters



"GLORIA," — gay, active, moonglow, "Summertime," American Beauty roses, tinkering at the piano, **Claudia**, tuna fish salad, Sheriff, "Tweed."



B. S. in Biology

Minors: Chemistry and Philosophy

Saint Louis, Missouri

Student Council Treasurer '46 . . . F. A. A. '43 . . . Phi Beta Chi '45-'46 . . . Glee Club '43 . . . Horse Show '44 . . . Footlights Club '43.

Catherine Elizabeth Weidle



A. B. in History

Minors: Sociology and Spanish

Saint Louis, Missouri

Glee Club '43-'44-'45-'46 . . . Sigma Beta Mu '43-'44-'45,
Treasurer '45 . . . Legion of Mary '43-'44-'45-'46 . . . Social
Peace Club '43-'44-'45-'46, Vice President '45 . . . Sodality
'43-'44-'45-'46 . . . Red Cross Unit '43-'44-'45-'46, Vice Chair-
man '45 . . . C. S. M. C. '43-'44-'45-'46, President '45-'46 . . .
Modern Language Club '43-'44-'45-'46 . . . Poetry Club '43-
'44-'45-'46, Secretary '43-'44 . . . **Font** '44.

1
9
4
6



"CATHERINE," — consci-
entious, neat, Browsing Room,
practice teaching, historical
novels, summer school
courses, ice cream, high
heels, statue of the Sacred
Heart.

S E N I O R S

June Felice Wilkerson



"WILK," — initiative, dash, zest for life, resourceful, camping in Minnesota, canoeing, **Roberta**, printing, scoops, amateur photographer.

A. B. in Sociology

Minors: Journalism and Philosophy

Saint Louis, Missouri

Font '43-'44-'45-'46, Editor '46, City Editor '45 . . . **Fontbonne** '43-'44-'45-'46, Photo-Editor '44 . . . Class Vice President '44 . . . Press Club '43-'44-'45-'46, President '45 . . . Sodality '43-'44-'45-'46 . . . Maid to May Queen '43 . . . F. A. A. '43-'44-'45-'46 . . . Footlights Club '43-'44-'45-'46 . . . C. S. M. C. '43-'44-'45-'46 . . . Social Peace Club '46 . . . Modern Language Club '43-'44 . . . Student Council '46.

Sally Polk Williams



A. B. in History

Minors: English, Philosophy, and Education

Atlanta, Georgia

Georgia State College for Women '43 . . . Modern Language Club '45-'46, President '46 . . . Resident Students' Association Treasurer '46 . . . F. A. A. '44-'45-'46 . . . Sodality '44-'45-'46 . . . Social Peace Club '45-'46.

1
9
4
6



"SALLY," — smoke-ology, **Snow Goose**, Jefferson City, sophisticated people, James Thurber, sun-worshiper, fish pond, Johnny Mercer's "Atlanta, Ga.," jitterbugging, rhinestone jewelry.

SENIORS

Sister Thomas Aquinas Clancy, O.S.F.

Sister Mary Wilma Dahm, O.S.F.

Sister Jolene Pachay, O.S.F.

Sister Annella Rolves, O.S.F.

Sister Mary Martinetta Crahan, C.S.J.

Sister Mary Benedicta Chaussee, C.S.J.

Sister Mary Henrietta Cunningham, C.S.J.

Sister Mary Vincentia Graf, O.S.U.

Sister Marie Edouarda Flaherty, C.S.J.

Sister Mary Paul Purfield, C.S.J.

Sister Rose Daria Sullivan, C.S.J.—cum laude

Sister Rose Celestine Jones, C.S.J.



SENIOR CLASS OFFICERS

President.....Mary Lee Rodegast

Vice President.....June Cassidy

Secretary.....Monica L. Roach

Treasurer.....Pat Chandler

Pat Chandler, Monica L. Roach, June Cassidy, Mary Lee Rodegast

HONORS 1945-1946

Margaret Deck	Magna Cum Laude
Rosaline Salome	Magna Cum Laude
Patricia Chandler	Cum Laude
Patricia Donley	Cum Laude

KAPPA GAMMA PI

Jane Buri
 Patricia Chandler
 Rosaline Salome
 Marilyn Steuterman

DELTA EPSILON SIGMA

Jane Buford
 Patricia Donley
 Mary Lee Rodegast
 Catherine Weidle

RECIPIENT OF ALUMNAE HOOD

Awarded for loyalty, leadership, and service to the
 all-around Fontbonne girl.

Jeanne Bona

PHI BETA CHI AWARDS, 1946

Audrey Conboy, '49
 Biology

Mary Shumacher, '49
 Chemistry



E. L. Hennerich, M. Speckart, M. E. Scott, G. Pfeiffer, M. J. Brandau,
B. J. Haemerle, P. Wolf.



P. Schulman, M. L. Long, A. Dreifke, A. Nahmenssen.



V. Burns, V. Egger, V. AuBuchon, R. Nagle, R. Ryan.



M. Koch, P. Duerr, M. Springman, M. Rauth.

JUNIORS

President.....	Mary Jane Brandau
Vice President.....	Mary Joan Klutho
Secretary.....	Charlotte Fromshon
Treasurer.....	Mary Margaret Carroll

The first post-war prom was the big event of the year as far as the Junior Class was concerned. We set all sorts of new records, such as having the largest attendance, the most popular souvenirs (silver sabres with crest attached), and the most exclusive site.



M. Castaner, J. Goostree, C. Fromshon, J. A. Bonacci.



M. A. Monahan, R. Carr, M. J. Delabar, A. Kramolowsky, R. Metzger, M. Tuchschildt, M. Carroll, A. Miller.

J. Keller, M. Shelton, M. Strathman, B. Yungbluth, B. L. Ruprecht.

JUNIORS

Of course, quite a few spare nickels and dimes for the prom came from cake sales and raffles. So numerous were these that our friends began to speculate on the outcome of it all. But a touch of sheer genius was our melodrama, "Curse You, Jack Dalton", complete to hecklers in the audience and rattling popcorn bags. Everything considered, however, we think it was worth all the effort and that we have the greatest class on the campus.

J. Klutho, F. Hoffman, M. Boedges, D. Chapman, R. Dofing, P. Vassely.





G. Vessell, M. Landwehr, E. Vande Walle, M. C. Kelly, M. Scandiff.



V. Fricke, D. Milligan, M. A. Uhri, B. Mulherin, M. A. Stueber,
M. L. Riechmann, J. Oberdorfer.

D. Colon, A. Koetting, L. Abkemeier, R. Perez, M. E. Petrequin.



T. Munkres, B. Houlehin, C. Pechman.

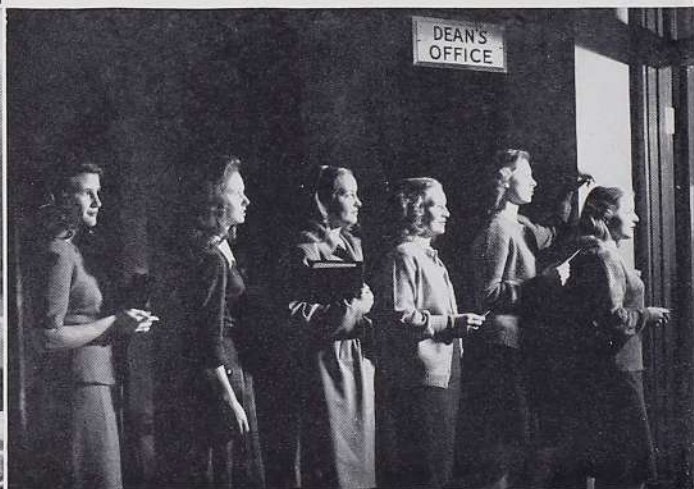
SOPHOMORES

President Marjorie Mason

Vice President Jeanne Schatzman

Secretary Sidonia Michelson

Treasurer Marianne Uhri



M. M. Coff, E. Byrne, M. O'Keefe, D. McWilliams, J. Davison, R. Donley

B. Phelan



N. Byrne, N. Quirk, D. Kelly, N. Ostermeier, S. Sappington,
R. Storm, G. Ganser.

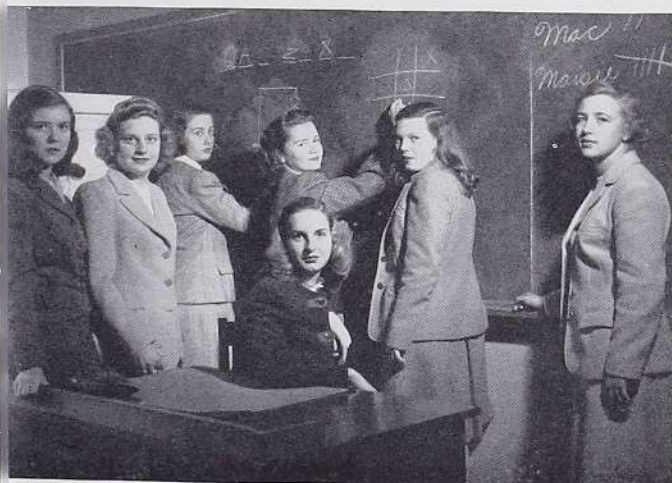


K. Roetto, A. Weber, T. Chandler, T. Holbrook, M. Mason.

SOPHOMORES

We believe in doing things the big way. At our Fall Frolic, the first dance of the year, there were even dates to spare. We responded beautifully to the demand for a St. Pat's Day party and amazed everyone with our new type of quiz show. We worked hard to earn for ourselves this year the title of the best workers on the campus.

A. Clemens, M. Farrell, H. Holmberg, M. C. Muenster, J. Schatzman,
C. Nash, R. Wortman.



J. Phelan, R. Lamwersiek, P. McKay, M. M. McCalpin, A. Thaman,
R. May, M. A. Coghill.



D. Milton, J. Bass, L. Pope, A. Mansour, D. M. Lee, B. Bloomfield,
L. Camper.

FRESHMEN

N. Servant, S. Sedlmayr, P. Mungenast, H. Koutsoumpas, M. Kist,
M. Porporis, G. Tracy.



Seated: M. Wolf, E. Kaletta.
Second Row: R. Alivernia, D. Lunsmann, D. Kinsella, R. Burke.



A. Breiding, M. Guelker, J. Connell, P. Hannefin, A. Weir, G. Monnig,
M. Phelan.



A. Graupner, H. Indermark, M. Ashe, M. DuBois, L. Benz, E. Garcia.

PresidentCarolyn Finn
Vice President.....Lorraine Rechten
Secretary.....Elizabeth Kaletta
Treasurer.....June Connell

September found us new Fontbonnies
plunged deeply into the intricacies of college
life, as we wandered wonderingly about the
marble halls with reams of quiz sheets, any

FRESHMEN

Standing: M. Schumacher, A. Conboy, R. Andriano.
Seated: T. Fischer, E. Springman.

M. Verner, E. Freesmeier, A. Blase, M. Williamson, L. Rechten.



Seated: J. Tracy, J. Chase.
Second Row: M. Kingston, M. Haley, P. Dolan, J. Porter, R. Wood.

Seated: A. O'Connell, M. Morris, B. Lux.
Standing: M. J. Reedy, E. Newman, M. L. Streit.

number of registration cards, and a discouraging load of textbooks—always the wrong ones, of course. Soon, however, the "old-timers" came to the rescue with a round of gay get-acquainted parties, and we settled down to bask in the long-awaited prestige of being "college women." October brought College Day and

FRESHMEN

H. Liedke, D. Jemison, M. Fitzpatrick, C. Keas, M. McManus, A. Aydt.

M. Mulherin, T. Buckman, M. C. Schweers, M. Maertz, C. Finn,
L. Mulherin, M. A. Brotherton.



Seated: D. Neumeyer, J. Seroogy, A. Tauschek.
Standing: M. McShane, D. Daly, J. Boismenue, M. L. Turnquist,
M. E. Schneider.

J. O'Malley, L. Finazzo, D. Henschke, D. Lietzmann, M. Laux, M. O'Malle

J. LeM

the Freshman skit, which told, in no uncertain terms, the true value of our illustrious class. In other words, we weren't bad. It goes without saying (or does it) that this selfsame Freshman body won both inter-class basketball and volleyball tourneys, giving the school team some straight shooters and some lusty

FRESHMEN

Seated: B. Thien, M. A. Auringer, M. E. Roetto.
Standing: M. E. Smith, S. Stroh, J. Smith.

M. Stasi, M. Doyle, R. Rau, K. Cherrito, P. Meyer.



J. LeMaster, B. Foerster, P. Mitchell, R. Leahey, P. Corkery,
J. Washburn.

B. Wyka, M. Rhode, K. O'Hanlon, M. F. Dwyer, M. C. McDonnell,
G. Lunsmann, D. Leamy.

cheerers. Months tumbled by—Humanities, Christmas Vacation, Humanities, the Prom, Humanities—. Finally came the warm "May days and the "hot" tunes of our Spring Spree, a fitting climax—a fond aloha—to our initial year as loving patrons of the purple and gold.

WE SEEK THE DIVINE CAPTIVE OF LOVE

*"As the hart panteth after the fountains of water; so my
soul panteth after Thee, O God. My soul hath thirsted after
the strong living God . . ."*

Ps. 41.

We have loved the beauty of thy house—

The snow-carved altar pinnacles;

We raise our eyes to thee,

Up from night shadows which befall our days.

Life's blood in rivulets

From mangled palms we see,

Blood shed by Him

That we might live.

We seek to drink the proffered cup—

Death to self for love of God.





Spiritual Council: J. Schatzman, D. Lee, E. Vande Walle, R. Nagle, K. Temm, V. AuBuchon, M. O'Kane, A. Miller, J. Buford, J. Buri, V. Burns

M. Koch



Standing: Jane Buford, Anne Miller.
Seated: Jane Buri.

PrefectJane Buri
Vice Prefect.....Jane Buford
Secretary-Treasurer.....Anne Miller

SODALITY

Gleaming candlesticks, white altar linens, and blue ribboned medals at First Friday Mass; Santa Claus, popcorn, and carols at the Sodality Christmas party; Maids, flowers, May Queen, and Daisy Chain—these are all the colorful highlights of the sodalists' college year. But underneath both this fun and beauty lies the Sodality's deeper, more important objective, which is embodied in its motto, "Ad Jesum per Mariam".

Providing food, clothes, and toys to several needy families at Christmas, sponsoring an Easter Egg Hunt for an orphanage, and promoting devotions to Mary throughout the years constitute some of the main projects by which the Sodality lives up to its motto.



Buri, V. Burns



M. Koch, P. Donley, E. Vande Walle, M. Stasi, L. Camper, Sister Rose Agnes, J. Buford, A. Miller, R. Salome, M. Long, M. Rodegast, C. Weidle, J. Buri, M. Schneider, R. Pérez, V. AuBuchon.

LEGIO MARIAE

The Legion of Mary acts as a magnetic beacon, ever drawing her "sisters" to that pinnacle of sanctity, the loftiest aim of Catholic womanhood—being Mary-like. The Legion spreads quietly but in ever-widening circles. Through the efforts of Our Lady of Fontbonne praesidium, there have sprung up, by Mary's magic, a praesidium at St. Rita's Academy, two praesidia at St. Joseph's Academy, and another praesidium at Fontbonne, bearing the name of Our Lady of Good Counsel. Besides the work of extending the Legion, Legionnaires distribute Catholic literature, read to the blind, visit hospitals, and teach catechism.

President Jane Buford
Vice President..... Anne Miller
Secretary..... Elaine Vande Walle
Treasurer..... Marie Stasi



Anne Miller, Jane Buford, Marie Stasi, Elaine Vande Walle.



Seated: J. Seroogy, M. Stasi, A. Miller, R. Ryan, M. Viejo, M. Rodegast, R. Salome, B. Ruprecht, V. Burns, C. Weidle, J. Buford, L. Camper.
 Standing: M. Roach, J. Wilkerson, N. Gibbons, V. Egger, M. Schneider, M. Carroll, V. AuBuchon, B. Mulherin, J. Buri, M. A. Riordan, M. Schumacher, P. Donley.

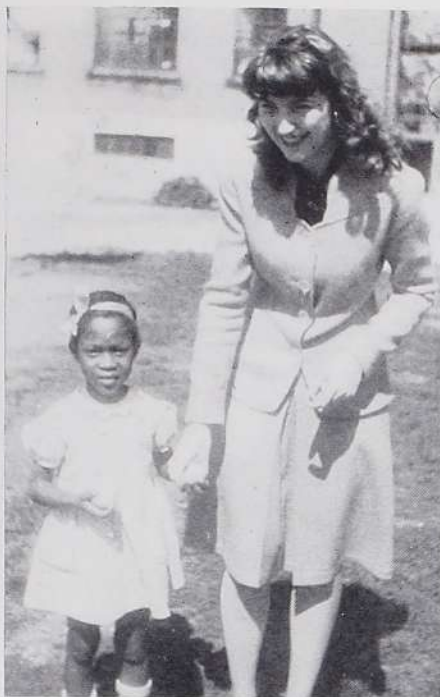
President Catherine Weidle
 Vice President Mary Ann Riordan
 Secretary-Treasurer Lorraine Camper

C. S. M. C.

"Go ye, therefore, teaching all nations whatsoever I have commanded you." These are the words of Christ to His Apostles, the first missionaries. Since that day, the Church has sent to the far parts of the world her sons and daughters to spread the doctrine of Christ. It is to help these priests and religious that the Catholic Students' Missions Crusade exists. Through their material contributions and prayers the students are able to participate in the missionary's efforts and in fulfilling the command of Christ.



Catherine Weidle, Mary Ann Riordan, Lorraine Camper.



Joan helps little Mary Louise of St. Francis' Orphanage to find eggs at the Sodality Easter Egg hunt.



June stands by as Santa makes dreams come true.

Jane Buri, Anne Miller and Jane Buford, Sodality officers, have an "off the record" chat with Father Lord before he addresses the Sodality.



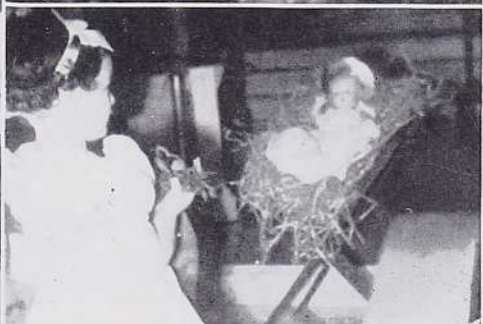
A group of Freshmen wait in line to pay respects to the late Cardinal Glennon.



"Hark, Bethlehem! Hark, Bethlehem! Hear the glad tidings." The Glee Club sings joyfully unto the Lord our King at its Sacred Christmas recital.



Margie also goes along hand in hand at the Sodality's Easter Egg Hunt.



May Day . . . Daisy Chain.

All for Thee, Oh Jesus! Roses are presented to the Infant Christ during Glee Club recital.

MAY QUEEN COURT



Queen: Jane Buri

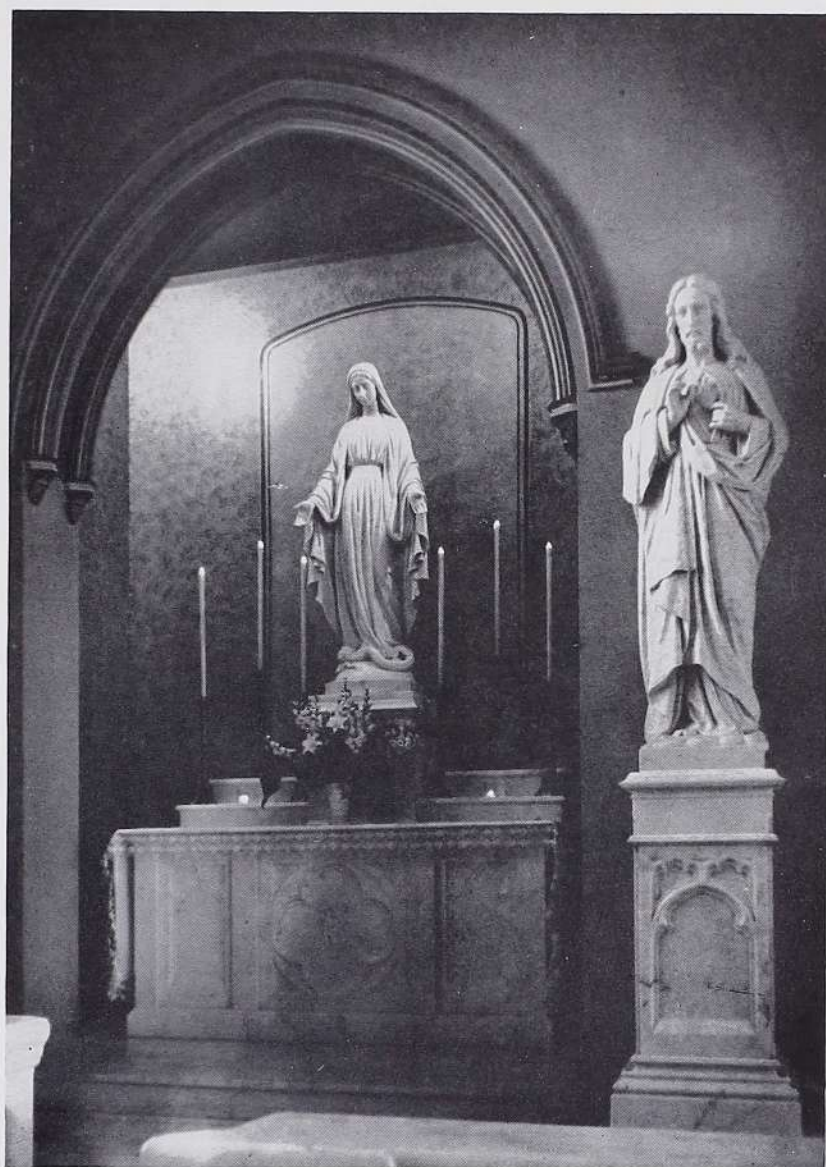
Officiant: Jeanne Bona

Seniors: Mary Viejo, Kay Temm

Sophomores: Betty Mulherin, Pat Hanlon

Juniors: Betty Yungbluth, Ritarose Nagle

Freshmen: Sue Sedlmayr, Marilyn Wolf



OUR MODEL

WE BUILD IN UNITY AND FREEDOM

*"Unless the Lord build the house, they labor in vain that
build it. Unless the Lord keep the city, he watcheth in vain
who keepeth it . . ."*

Ps. 126.

In unity we seek peace, government, and God.

We have built the house in beauty, in poetry, and art;

We have gazed on life, on death, and truth;

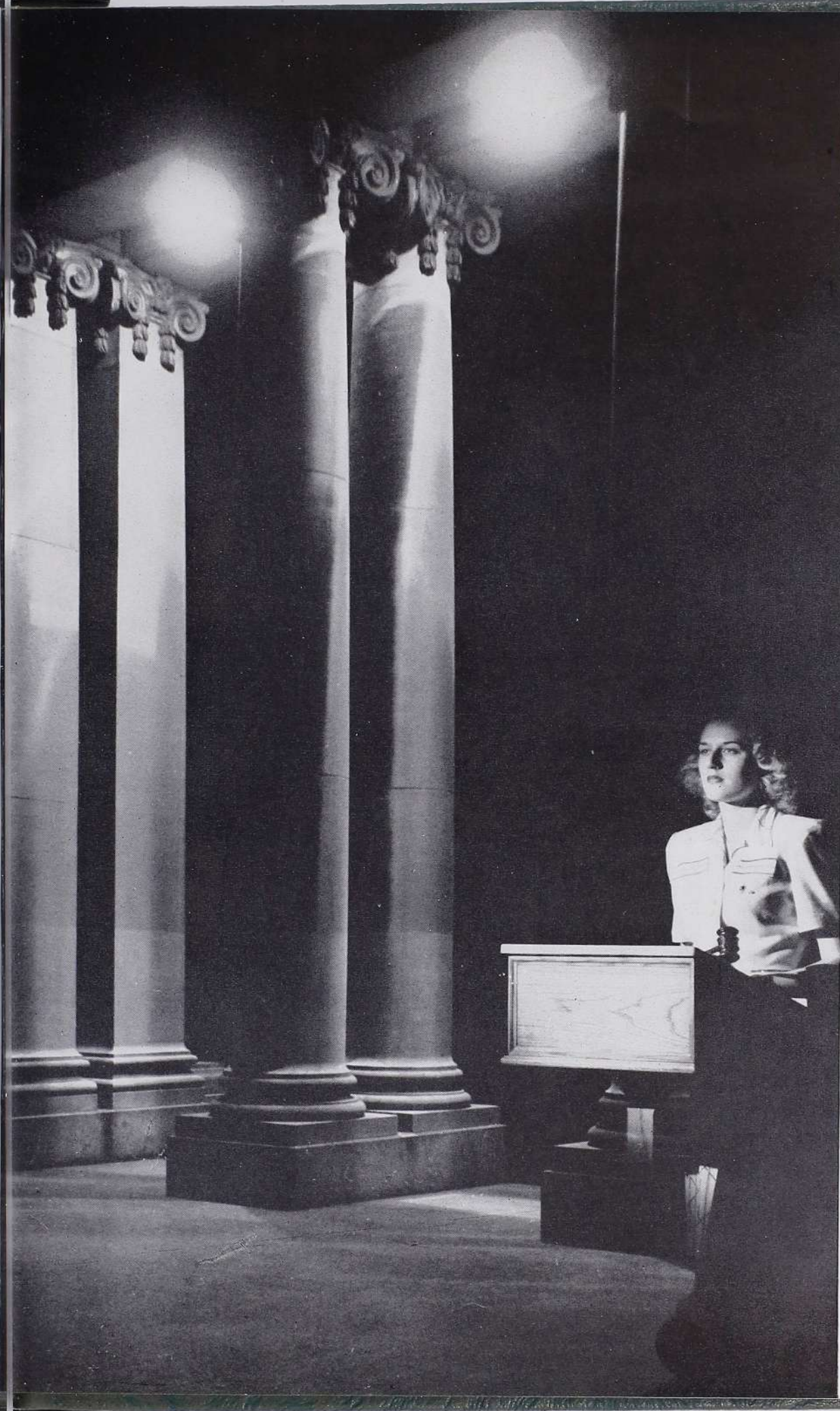
*We are free, our minds to know, our wills to rule,
our souls to love.*

In canyoned city streets, and plateaued peaks

We are pinnacled with power;

And the power we possess

Is the freedom wherewith Christ has made us free.





First Row: M. Fitzpatrick, M. Landwehr, C. Nash, A. Weber, R. Perez. Second Row: K. Roetto, J. Sercogy, M. E. Schneider, J. Bonacci, A. Mansour, S. Williams, M. Castaner, M. Rauth, M. Viejo, H. Liedke. Third Row: R. Salome, M. Springman, A. Tauschek, E. Springman, C. Weidle, D. Daly, D. Jemison, T. Chandler, B. Bloomfield, M. Stasi, M. L. Rodegast, P. Chandler, M. Laux.

First Row: M. Mason, M. E. Roetto, E. Vande Walle, M. Scandiff, V. Rodegast. Second Row: L. Camper, D. Neumeyer, A. Koetting, J. Petrequin, B. Mulherin, D. Colon, P. Duerr, T. Holbrook, G. Vessel. Third Row: M. Petrequin, M. Maertz, M. A. Brotherton, L. Mulherin, M. C. Schweers, M. Mulherin, M. McManus, A. Aydt, A. Conboy, M. Strathman, J. Oberdorfer.



Pat Chandler, Rosaline Salome, Sally Williams, Mary Lee Rodegast.

RESIDENT STUDENTS' ASSOCIATION

President	Rosaline Salome
Vice President	Mary Lee Rodegast
Secretary	Pat Chandler
Treasurer	Sally Williams

Every section of the United States is represented in the Resident Students' Association. Voices in Fine Arts range from the soft drawling of Georgia and the excited accent of Puerto Rico to the clipped phrases of Wisconsin. It is the absolute prerogative of the boarders to roam the surrounding countryside after dinner, to inhabit the laundry room over week-ends, and to greet parents at intervals by collect long distance telephone calls.

STUDENT COUNCIL

It is the business of the Student Council to see that all general campus affairs go on as scheduled. It is composed of the officers, the class presidents, the Sodality prefect, a representative from the publications, and the president of the Resident Students' Association. The Council has this year put to test student government, which was inaugurated only last year. Its findings have been quite satisfactory, and it has provided one opportunity for Fontbonne students to learn how to live the Catholic ethics that they are taught.



STUDENT COUNCIL DECORATES CAR FOR COLLEGE DAY
J. Buri, J. Brandau, R. Salome, M. Mason, J. Wilkerson, M. L. Rodegast,
G. Walters, J. Bona, R. Johans, R. McNamee.

President Jeanne Bona
Vice President Rose McNamee
Secretary Rita Johans
Treasurer Gloria Walters



STUDENT COUNCIL
C. Finn, J. Brandau, J. Wilkerson, G. Walters, R. Johans, J. Bona, R. McNamee, R. Salome, J. Buri, M. L. Rodegast, M. Mason.



Editor June Wilkerson interviews former ambassador Patrick Hurley while Colleen Richey looks on.

Editor-in-Chief June Wilkerson
 Associate Editor..... Frances Hoffman
 City Editor..... Norrine Gibbons
 Business Manager..... Gloria Pfeiffer

THE FONT

The campus newspaper has done very well for itself this year under the able guidance of Mr. Martin Duggan. The entire staff has been given opportunity to see first hand what really goes on behind the making of a newspaper. A poll taken in March asking for student opinions verified the belief that the **Font** is a success. Some interesting projects sponsored by the **Font** this year were a poll on the Communist threat in the East, a letter-to-the-editor column, and the freshman-edited issue of the paper in April.



Frances Hoffman, Norrine Gibbons, June Wilkerson, Mary Speckart.



Seated: D. J. Robertson, M. J. Murphy, J. Klutho, J. Brandau, G. Pfeiffer, C. Fromshon, P. Hannefin.
 Standing: M. Speckart, F. Hoffman, J. Wilkerson, L. Pope, N. Gibbons, M. Verner, M. Coff, M. Coghill.



First Row: G. Pfeiffer, M. Speckart, B. J. Haemerle.
 Second Row: J. Wilkerson, D. J. Robertson, N. Gibbons, S. Sappington, M. J. Murphy, J. Cassidy, M. Brandau.
 Third Row: R. McNamee, M. Kingston, R. Bussmann, N. Byrne, M. Boedges, R. Dofing.
 Fourth Row: J. Klutho, S. Moegle, F. Hoffman, D. Chapman, C. Fromshon, P. Hannefin.

PRESS CLUB

President Mary Speckart
 Vice President Gloria Pfeiffer
 Secretary-Treasurer Betty Jane Haemerle

The chief activities of the Press Club center upon helping the **Font** and **Fontbonne** in any way possible, whether by earning money or typing copy for them. The club

acts also as a sort of social arm for the staff of the paper. One of its activities was a chicken dinner held in the Press Room, a carry-over from a Broom-and-Mop Brigade begun last year. Later in the year it became necessary for the Fibber McGee-like cupboard to be cleaned out. The Press Club was called in, and before anyone knew what was happening, the Press Room was once more spic and span.



GLEE CLUB

President.....Pat Duerr

Secretary-Treasurer

Mary Elizabeth Petrequin

Snow and capes for Christmas caroling—J. Buri, R. Bussmann, M. A. Riordan, M. Steuterman, A. Nahmensen, R. Leahey, M. Schumacher, P. Donley.



Glee Club presents Christmas recital: J. Buford, T. Buckman, L. Mulherin, M. A. Brotherton, M. L. Rodegast, R. Salome, R. Seeroogy, A. Adyt, C. Weidle, A. Tauschek.

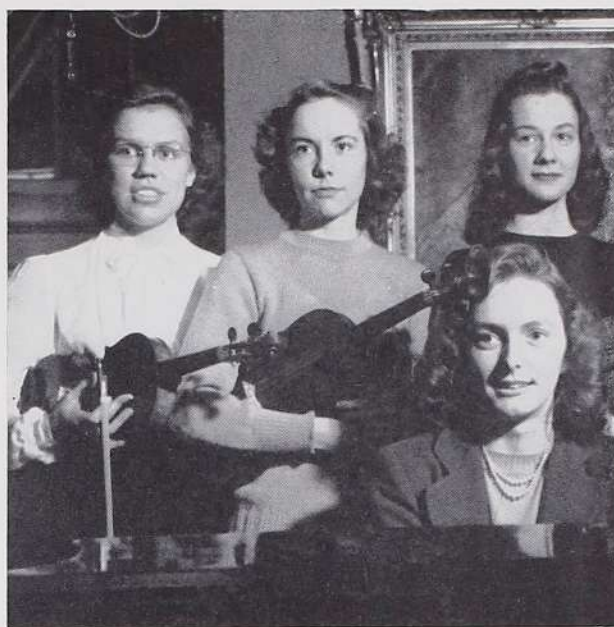


Giving vocal praise to the newborn Christ are: A. Clemens, G. Vessel, D. Neumeyer, M. L. Turnquist, M. E. Schneider, M. Landwehr, P. Duerr, D. Colon, M. Maertz, A. Weber, J. Petrequin, B. Mulherin, A. Conboy, R. Andriano, M. Mulherin, M. E. Petrequin, A. Koetting.

SIGMA BETA MU

President Anne Dreifke
 Vice President..... Mary Elizabeth Petrequin
 Secretary Theodora Holbrook
 Treasurer Anne Miller

Sigma Beta Mu is open to all who wish to rise above the dullness of everyday life and revel in the realm of pure art. At the meetings of this club is played music of all sorts—from the melodies of Carpenter to those of Bach and Haydn. The members of the music department contribute their talents to the gatherings, and the interpretations of the masters are heard on records. The club is



Violinists with accompanist: Anne Dreifke (at piano), Annette Nahmensen, Mary Elizabeth Petrequin, Ann Weber.

small, but it yields immense satisfaction to its members, for only those truly interested belong.



Seated: A. Miller, M. Guelker, T. Holbrook, A. Dreifke, M. Petrequin, L. Camper, M. Landwehr.
 At Piano: J. Petrequin, M. Long.
 Standing: G Vessel, A. Nahmensen, A. Weber, A. Clemens, P. Duerr, R. Perez, T. Buckman, J. Davison.



Members of Footlights Club rehearsing for **Ladies in Retirement**.



Seated: A. Kramolowsky, R. Salome, D. Milton, P. Wolf, N. Byrne, D. Lietzmann.
Standing: M. A. Monahan, M. Kingston, R. Bussmann, A. Clemens, H. Koutsoumpas, S. Stroh, A. Mansour, M. L. Long, S. Sappington.

FOOTLIGHTS CLUB

Ellen Creed made her way wearily down the stairs. The cord was knotted tightly around her hands. Leonora Fiske, unaware of her danger, played "Tit-Willow". Suddenly the cord closed about her throat, and the curtain descended on the second act of **Ladies in Retirement**. Backstage, Ellen Creed, alias Marilyn Steuterman, aided her victim alias Stella Stroh to rise, while the rest of the Footlights Club under Director Belle Marie Mullins, performed their duties either as cast or stage crew members.

The chief project of the Footlights Club is the production of a first class play during the school year. In addition to this, monthly meetings, initiation, and the annual breakfast of the club make it a super-active agent on the campus.

President	Marilyn Steuterman
Vice President.....	Mary Ann Monahan
Secretary	Anne Kramolowsky
Treasurer.....	Ann Kimbrough Weber

POETRY CLUB

The Fontbonne Poetry Club, which is affiliated with the Catholic Poetry Society of America, has as its main project the study of the lives and works of Catholic poets. Alice Meynell, Francis Thompson, Gerard Manley Hopkins, Joyce Kilmer, and Sister Madeleva head the list of prominent poets whose works have been discussed. The ideal for which the club strives is to develop

deeper insight into life through the study of poetry, and a deeper insight into poetry through the study of Catholic poets.

President	Colleen Richey
Vice President.....	Lee Gleeson
Secretary	Rosemary Ryan
Treasurer	Rhea Metzger



L. Fairchild, M. L. Long, R. Carr, C. Richey, R. Metzger, R. Salome, J. Buford.



Seated: M. Deck, K. Temm, J. Schatzman, M. Shelton, R. Nagle, D. Milton.
 Standing: J. Goostree, M. Coghill, E. Vande Walle, R. Leachey, G. Lunsman, M. Kelly, R. Storm, D. McWilliams, J. Davison, M. Carroll.

DELTA PHI

President Margaret Shelton
 Vice President Marjorie O'Keefe
 Secretary-Treasurer Jeanne Schatzman

Delta Phi wins and welcomes all students following art courses and anyone else manifesting a real interest in this particular field. Invitations are issued on this basis, and each pledge soon after demonstrates her artistic abilities by some assigned project. The as-

signment this year was the molding of two clay ash trays. If the execution of the subject is up to par, the student becomes a full-fledged member and attends the club's Bohemian supper, when, by candlelight, she is formally received. Various programs and demonstrations are sponsored during the school year, this year's chief activity being the making of book-marks for the armed forces.

MODERN LANGUAGE CLUB

President Sally Williams

Vice President..... Virginia Aubuchon

Secretary Pat Chandler

Treasurer..... Maria Castaner

It is the purpose of the Modern Language Club to correlate the cultures of the leading foreign powers. Its attempts cover the religious field, the artistic field, and the political field. In view of these aims, the club has had this year some interesting and informative meetings. At one meeting some little-known facts about Our Lady of Guadalupe were presented by the Spanish department. An up-to-date offering was made by the German students when they showed some captured Nazi slides.



Seated: Sally Williams
Standing: Virginia Aubuchon, Pat Chandler, Maria Castaner.

Seated: S. Williams, M. L. Turnquist, A. Mansour, M. Mulherin.

Standing: M. Castaner, G. Vessell, M. Sabadell, P. Chandler, M. Viejo, M. Rauth, R. Andriano, R. McNames, V. Egger, C. Fromshon, B. Mulherin, J. Cassidy, M. Landwehr.

Seated: J. Buford, G. Ganser, M. Roach, M. C. Muenster, L. Camper, D. Lee.

Standing: P. Donley, J. Buri, M. A. Riordan, R. Salome, C. Weidle, K. Roetto, A. Dreifke, V. Aubuchon, M. C. Schweers, M. L. Long, C. Finn, A. Koetting, J. Petrequin, A. Clemens, M. Petrequin.





Seated: R. Nagle.
Standing: M. Deck, M. Coff, A. Kramolowsky.

HOME ECONOMICS CLUB

President Ritarose Nagle
Vice President Anne Kramolowsky
Secretary Margaret Deck
Treasurer Mary Margaret Coff

The Home Economics Club has for its ideal the true Christian home, with all its activities centering upon this theme. Its membership is one of the largest of any similar club. Having a varied number of fields represented in its ranks, this club opens the year with its freshman initiation (an impressive candlelight ceremony), aids the Sodality at Christmas by providing lovely layettes for the Christmas baskets for the poor, and in spring entertains the parents of the girls at a picnic on the campus.

D. McWilliams, S. Sedlmayr, M. Deck, P. Meyer,
P. Mungenast, B. Thien, R. Alivernia, P. Mitchell.

Seated: E. Springman, M. O'Kane, J. Keller, P. Dolan,
M. Strathman.

Standing: E. Vande Walle, V. AuBuchon, A. Tauschek,
M. Springman, M. Schumacher, R. Rau, M. Auringer,
M. Kist, A. Adams, J. Bonacci, R. Lamwersiek, B.
Klinge, R. Burke, D. Milligan, K. Temm, S. Smith.

First Row: M. Laux, M. Haley, J. LeMaster, E. Hennerich,
M. Carroll, V. Egger, C. Nash, E. Kaletta, N. Byrne,
J. Tracy, M. Farrell, M. Wolf.

Second Row: V. Skarha, M. McShane, R. Johans, D.
Chapman, M. Brandau, R. Dofing, J. Oberdorfer,
M. Uhri, J. Porter, E. Freesmeier.



PHI BETA CHI

Timely topics in the field of science keep the members of Phi Beta Chi abreast of the latest developments, whether pertaining to industry, education, or pure theory. A few of the more interesting phases discussed were streptomycin, a new wonder drug, the place of women in the industrial laboratory, and the formation of artificial agates. A member of the Missouri Academy of Science, the club meets with the College Section of the

Academy in April. This year the meeting was held at Lindenwood College. Papers from Fontbonne chemistry and biology departments were on Vitamin C and the Rh blood factor.

President	Rose McNamee
Vice President	Rita Johans
Secretary	Virginia Aubuchon
Treasurer	Anne Beasley



First Row: M. Farrell, N. Byrne, N. Quirk, V. Egger, R. Dofing, M. Boedges, R. May.
 Second Row: M. C. Muenster, J. Bona, R. Nagle, M. Springman, M. M. McCappin.
 Third Row: H. Holmberg, J. Cassidy, D. Chapman, S. Moegele, R. Storm, B. Houlehin.



S. Smith, M. O'Kane, M. Castaner, P. Duerr, M. Speckart, R. McNamee, A. Beasley, V. Aubuchon.
 C. Fromshon, G. Walters, M. Deck, K. Temm.



Virginia Burns, Rhea Metzger, Margarite Sabadell,
Mary Tuchschiidt.

President Margarite Sabadell
Vice President Virginia Burns
Secretary Rhea Metzger
Treasurer Mary Tuchschiidt

F. A. A.

It is one thing to have a physical education department, but it is another thing to have a cheering crowd of sports fans. And that is precisely where the F. A. A. comes in. All of the sports activities—basketball team, volley ball tournaments, pep rallies, and many others—are regulated by and spurred on by this club. The Penny Circus, one of the biggest financial projects of the year, is entirely the work of the F. A. A. Because of unflagging zeal and uncounted hours of toil, the Penny Circus this year was the biggest success in the history of Fontbonne.

The basketball team has really worked this year, and was splendidly backed by the cheering sections. Captained by Mary Jayne Murphy, the team showed much spirit contributed by the many promising new players of the freshman class. Decisive in action and light on the toes was the team.



Seated: M. J. Reedy, J. O'Malley, M. J. Murphy, M. Speckart, M. M. Coff.
Standing: M. L. Streit, J. Tracy, M. L. Long, S. Sappington, B. Newman, A. Miller, H. Koutsoumpas, M. McManus, M. Maertz.

First Row: M. A. Coghill, R. Ryan, R. R. Nagle, A. Miller, M. L. Long, P. Donley, M. Roach.

Second Row: A. Blase, J. Boismenu, R. Bussmann, V. Aubuchon, M. Shelton, V. Burns, J. Buri, M. A. Riordan.



First Row: M. Schweers, P. Chandler, H. Koutsoumpas, A. Kramolowsky, S. Williams, B. L. Ruprecht, P. Wolf, M. J. Reedy, M. L. Streit.

Second Row: T. Fischer, M. Maertz, M. McManus, H. Holmberg, J. Lunsman, B. Wyka, M. Kingston, B. Newman.



First Row: R. Metzger, M. J. Delabar, E. Hennerich, B. J. Haemerle, S. Sappington, J. Wilkerson, M. Tuschmidt.

Second Row: A. Tauschek, M. Speckart, M. Sabadell, M. J. Murphy, N. Gibbons, N. Byrne, J. Serogy.



RED CROSS UNIT



Seated: M. Deck, G. Lunsmann, R. Dofing, M. Boedges, R. Leahey, R. Rau.
 Standing: M. O'Kane, S. Smith, J. Goostree, M. Rodegast, C. Weidle, G. Ganser, J. Schatzman, B. Holmberg, M. Muenster, M. Farrell, K. Temm.

Chairman	Margaret Deck
Vice Chairman.....	Marion Farrell
Secretary	Kathryn Temm
Treasurer	Shirley Smith

The campus Red Cross Unit gives an active demonstration of labor "For God and for Country" in its constant and unselfish co-operation with the American Red Cross.

Membership is extended to all who want to help, and the many hours of service are carefully recorded. The Unit participated this year in a number of worth-while projects and the girls gave their all in boosting the annual Red Cross drive carried on throughout March. Thus, the Fontbonne girl not only studies the Christian virtues of neighborly love, but enacts each day the beauties of charity and of generous giving through the ranks of her Unit.

SOCIAL PEACE CLUB

President Pat Chandler
 Vice President..... Rosemary Ryan
 Secretary-Treasurer Virginia Burns

Preparing her daughters to cope socially and economically with the chaos of a post-war world is another of the college's many

aims. Membership in the Social Peace Club is an asset not only to majors in the social sciences, but to all those interested in the treatment of present-day problems, from a Christian viewpoint. Its regular monthly meetings are enhanced by occasional delightful evenings spent at the home of Dr. Clemens.



First Row: B. L. Ruprecht, B. Yungbluth, M. E. Roetto, P. Donley, G. Ganser.
 Second Row: G. Burns, P. Chandler, R. Ryan, M. FitzPatrick, M. Tuschmidt, M. Rauth, C. Weidle, M. L. Rodegast, D. Lee.
 Third Row: M. Sabadell, J. Buford, D. J. Robertson, J. Wilkerson, N. Gibbons, J. Buri, R. Salome.

WE LIVE JOYOUSLY THE HOURS OF YOUTH

*"Then will I go unto the altar of God: to God who giveth
joy to my youth. I will praise thee upon the harp . . . O God,
my God . . ."*

Ps. 42.

*In a world of crystal ice
And in the moist warm breath of springtime
We have laughed—a million laughs—
From resounding granite walls.
We have spent the golden mornings
Of our younger, gladder days
Living joyously youth's hours
With our eyes uplifted still.*



WE CELEBRATE

Junior-Senior Prom—Norwood
Country Club.



Jane Buri, Anne Beasley, Colleen
Richey with former Ambassa-
dor Hurley.



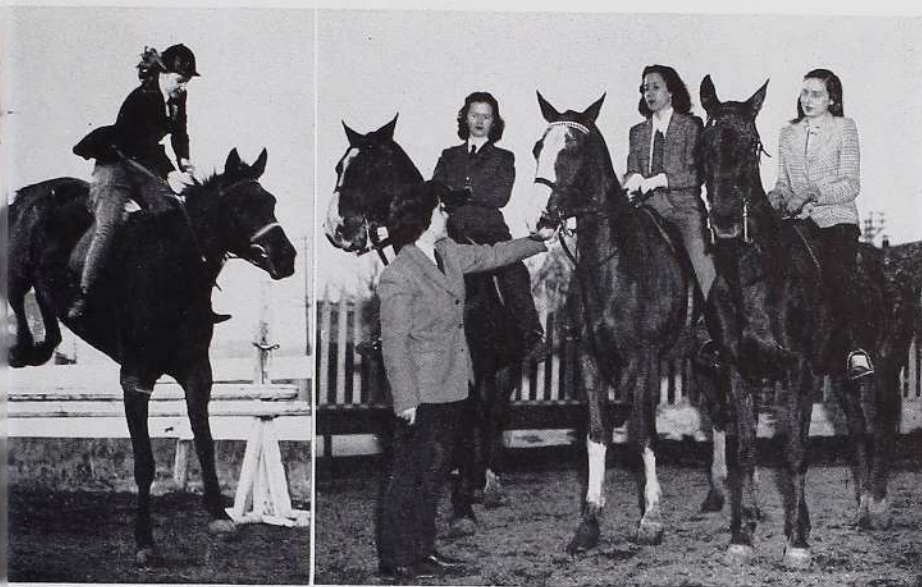
Sophomores after Father-Daugh-
ter Banquet.



WE PRACTICE

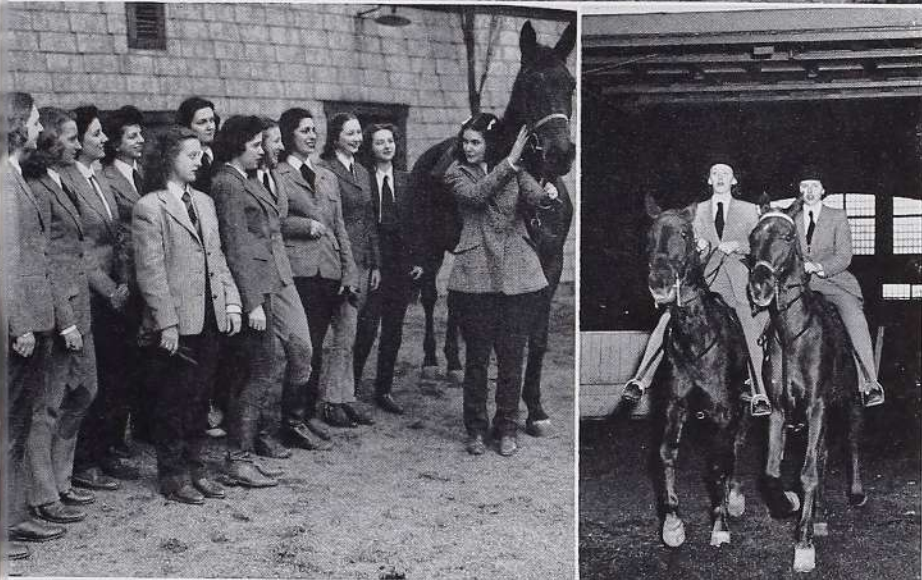
Margie O'Keefe takes the jump.

Jane Tracy helps out Mary M. McCalpin, Mary Lou Streit, and Ruth Bussmann.

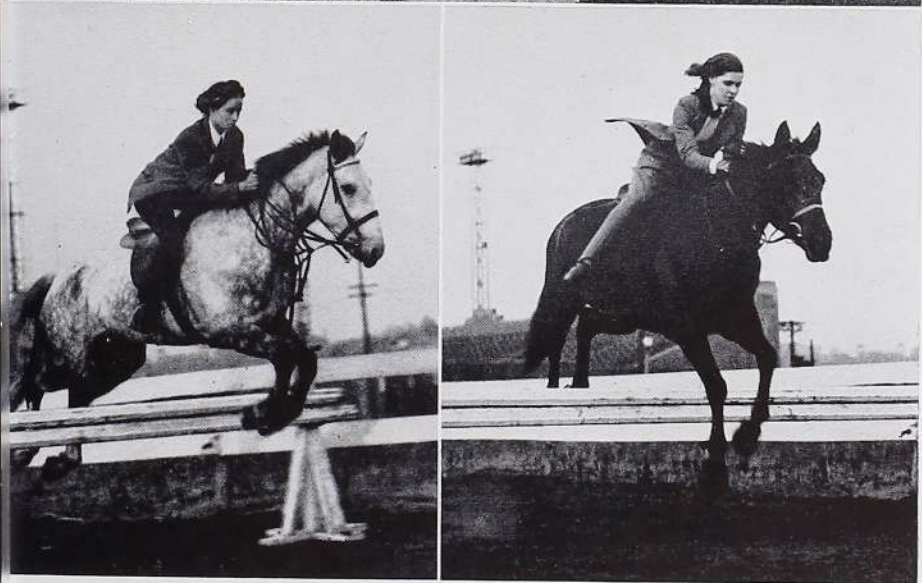


Beginner's Class line up before afternoon's ride.

Bebe Kelly and Sap pause on their mounts.



Wilkerson shows good form. So does Speckart.



WE COMMEMORATE

It was fun; right, kids?

Gloria and Dottie in their black robes at Fontbonne.

Caught off guard by the camera are Lala, Theresa, Charlie, Ann, and Patty.

Buford's car takes first place, and rightly so.

Camera shenanigans by Ginny, Rose, and Joan.

Cap and gown cuties, Mary and Colleen.

This is your day, Mary Ann.

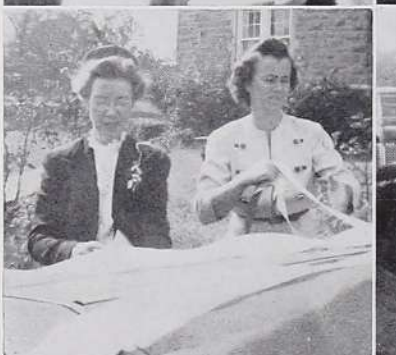
Rita takes time out for a flicker of the lens.

Artistry on wheels.

Miss Mullins and Miss Willis add touches to the car.

"Collegiettes" in competition.

Camera clicks . . . comes this glamour tableau of Maggie Deck.



WE COMMEMORATE

Rosie and Maggie making pretties.

Kay ready for action.

The view looks good from any angle.

Peaceful posing for the photographer by Rita.

Vourdonna, Marg, Mary Ann, and Ruth display glamour on wheels.

The three Nancys join forces with three other pals.

Special memories of a special day beside the "Senior Special".

Gib laughing heartily as she holds fast to the car . . . and to Fontbonne.

At last, Margaret, you are a true Fontbonnite.

Jane, Pat, Mary Ann, and Monica cutting happily along.

Smiles are in order; Donna, Sid, Gloria, Mary Catherine and Jeanne, the car looks great.



First Row: Symmetrical rhythm; Coke coming up; Miss Mullins, post-"Ladies in Retirement".

Second Row: Curse You, Jack Dalton! Merry Christmas! Up and over—almost.

Third Row: Sleepy, Sis? Ah—h—h—h.

Fourth Row: **Font** ad; Something different in the gym; Let's dance.

Father Time has once more made a wide swath with his sickle across Fontbonne's campus. The short-lived beauty of falling golden leaves has turned into the more stable greenness of summer with astonishing rapidity.

The sombre gaiety of College Day lifted the Freshmen from the world of adolescence to the higher regions of college, and in the hearts of the older students all the sacred punctuality of tradition was revived.



First Row: Soph party—good deal; Marcella, the indispensable; What's that again, Kim Weber?
 Second Row: Johnnie Johnston and ye editor, being springy; Doris Milton, animal, and Thelma Munkres; Charlie Fromshon and Patty Duerr, roommates; Frosh locking beaverish; Sally, plus Puerto Rican, Piggy.
 Third Row: Byrd Murphy's chorines; Margie Scandiff plus menagerie; Rita Andriano from Fredericktown; Sister Margaret John with Dinorah escorting.
 Fourth Row: Buford plus bushes; Tuisan Pat Chandler; Frosh, just being frosh; Juniors, a la windy day.

The Penny Circus hit an all-time high, financially as well as socially. Also, the Junior Class saw the third girl from their ranks, Mary Ann Monahan, crowned queen. The Sophomore "Fall Frolic", the melo-

drama "Curse You, Jack Dalton", Mary Jayne Murphy's thesis, "College Rhythm", and other activities rushed by so quickly that before the year had hardly begun the Christmas vacation had arrived.



First Row: Margie turns cow-hand; What, no classes, girls? Is this a frame-up, LuLu? Childhood Days.
 Second Row: Correction: Gable's back and Daly's got him! Bear up, Alice! Just carefree college girls; Watch the birdie!
 Third Row: A gander at Ganster; Sunday strollers around the horseshoe; But Jane Nolan is on her way to lunch.
 Fourth Row: What's Hollywood got on Ginny, Clara, and Mary Anne? Coffey's got the giggles; Therese, Lala, and Ann will get those soap flakes yet; Arcading.
 Fifth Row: Theocritus and Nurse Van Sant of a sunny afternoon; Mary Ellen—lover of nature!

Retreat halted the hectic days, and all paused for a brief moment and remembered why there is a Fontbonne at all. For to be learned, or to be influential, or to be admired

is worthless without knowing how to learn, follow, and love Him who sent us here.

For a number of weeks the Prom riveted itself into the thoughts of all.



First Row: Astrid and Charlotte twinning; D. J., Wilk, and Cracker visit Fulton for Churchill-Truman day; Dinorah, Betty, Rodie, and Maria looking cute.
 Second Row: Marie Stasi putting the right (broken) foot forward; Sophs, all dressed up with some place to go; Christmas Baskets, Kids? Marymac from Atlanta, Ga.
 Third Row: Need a refill, Patty Duerr? Juniors a la steps; Boarders.
 Fourth Row: Marie Viejo from Puerto Rico with Sr. Alfred; Snowbound; Dot Daly just restin'; Those Soph inseparables, Mary Lou Riechmann and Mary Alice Stueber.

Its success is written in the "happy memories" page of everyone's heart.

The solemn purple of Lent soon became transformed into the brilliant pastels of Easter. And with Easter came many lightened

hearts, as the Senior comprehensives had been finished. Marilyn Steuterman thrilled a large audience with her interpretation of Anderson's "Elizabeth the Queen". The Freshman Class showed its initiative at its dance in May.



First Row: Burns, Egger, Carroll, Nagle, Ryan and Aubuchon—Juniors; Marie Viejo again from Puerto Rico; Anne and Lizzie just posin'; Augusta, Ga., personified; Mary Mac and Mary Ellen, Frosh boarders; Those Green Bay roommates.
 Second Row: Soph boarders; Alice Aydt just being natural; Junior picnickers; Byrd's chorines.
 Third Row: D. J. and man; Don't believe a thing Milligan says—; On your way to humanities?
 Fourth Row: Our jumping friends, Speck, Poo, Margie, Abt, and Wilk; All you snowbunnies; Look at that form!

The loveliness of the month of May enveloped all as the sky beamed just a little bluer for May Day, and the Queen of Heaven smiled as Jane Buri crowned her

with roses. And then came commencement day, baccalaureate, and finally graduation. Many a tear glistened in the light of the chapel windows as thirty-four seniors proceeded down the aisle for the last time.

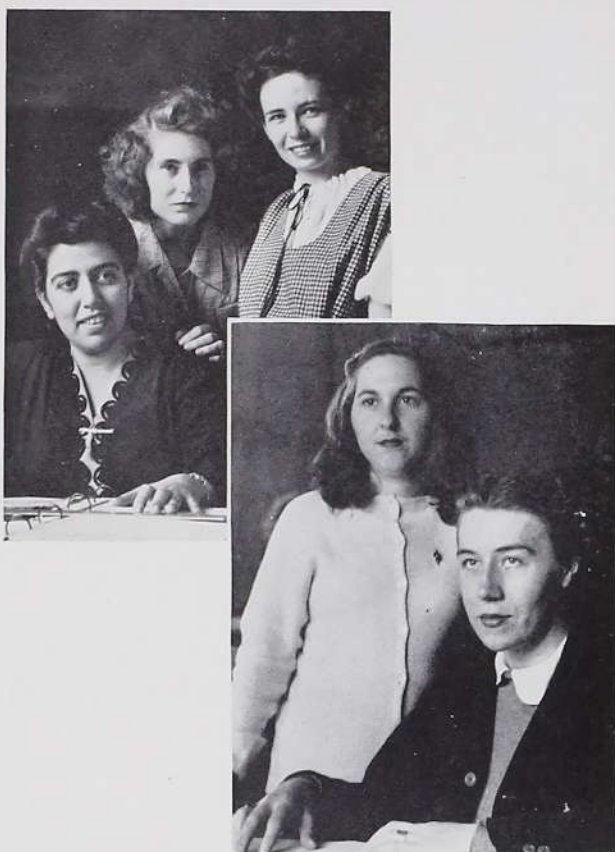


First Row: Frosh lounging on campus; Another climber, Terry? "I wanna bite, Bobbie", say Rosemary and Markie; Waiting for a train.
 Second Row: Rayda fits into her niche; G. Ganser and J. Schatzman bask under the palm; Stuebe and Del have broken their watches; Hot dog!
 Third Row: On the way to town—Pat Duerr and Charlie Fromshon; Fall cover girls; Carolyn Finn just got out of class; Mary Pat and Dotty Daly hungry again; Smile pretty, Audrey and Therese!
 Fourth Row: Who dat? That faraway look—Jan! Off for a hike! Gee, whiz!—Dotty Jemison; Study in perspective.

Yes, the year did pass quickly. But recorded time is as nothing in comparison with the indelible imprints in the hearts of those who love Fontbonne. Friends made, happy

hours spent, information learned, and most of all, the true lesson of life found, will live forever in a treasure chest which cannot perish—the human heart.

EDITORIAL STAFF



Rosaline Salome, Charlotte Fromshon, Monica L. Roach,
Margie Sabadell, Louise Fairchild.

ROSALINE SALOME
Editor-in-Chief

CHARLOTTE FROMSHON
Feature Editor

MONICA LISTON ROACH
Photo Editor

LOUISE FAIRCHILD
Business Manager

MARGARITE SABADELL
Advertising Manager

MARY LOU LONG
Make-up Editor

A MESSAGE TO THE STUDENT BODY FROM THE FONTBONNE STAFF

This Yearbook of 1946 is the product of our willing work. We wished to record accurately and beautifully the year that has just passed. As the years move on, since move they must, we hope that this book will be a lasting record of the days we all have loved. Whether this book is better or worse

than those which have come before it, and those which will come after it, is of little importance. The value of this Yearbook lies in the fact that it is a page from the history of Fontbonne, and a scene from the drama of its students' lives.

STAFF ASSISTANTS

FEATURE ASSISTANTS

Mary Ann Coghill
Mary Ann Brotherton
Mary Speckart
Helen Holmberg
Pat Hannefin

PHOTOGRAPHY ASSISTANTS

June Wilkerson
Dorothy Robertson
Norrine Gibbons

BUSINESS ASSISTANTS

Annette Nahmensen
Gloria Pfeiffer
Mary Jane Brandau
Jane Tracy
Minne Wolf
Jane Buri
Elizabeth Kaletta
Mary McCalpin

MAKE-UP ASSISTANTS

Mary Lee Rodegast
Jane Marie Buford
Lorraine Camper
Frances Hoffman
Pat Duerr
Dinorah Colon



Seated: M. L. Rodegast, M. L. Long, C. Fromshon, R. Saleme, N. Gibbons, M. Speckart.
Standing: M. Brotherton, M. J. Coghill, B. Holmberg, J. Wilkerson, M. Sabadell, D. J. Robertson,
L. Fairchild, M. Roach, P. Hannefin.

ACKNOWLEDGMENTS

We are deeply indebted to the following people, without whose kind assistance the 1946 Fontbonne would have been impossible.

Mrs. Rudolf Kaufman
Faculty Advisor

Carlos Piaget
Photographer

Harry J. Swain, Jr.
Central Engraving Co.

Charles C. Grimm
Wiese Printing Co.

J. L. Glassen
Becktold Bindery

Jack Zehrt
Photographer

Mr. and Mrs. Edwyn Hofstetter
Edwyn Studios

Beatrice Burke

OUR SPONSORS

Mr. and Mrs. Frank J. Adams
 Alexian Brothers Hospital
 Mr. and Mrs. Walter Ashe
 Mr. and Mrs. V. A. Aydt
 Mrs. John B. Barnard, Jr.
 Mr. Charles S. Beasley
 Mr. and Mrs. J. H. Benz
 Miss Aléen B. Block
 Borbein, Young and Company
 Mr. and Mrs. J. J. Burns
 Mr. and Mrs. Myron B. Camper
 Dr. H. J. Cassidy
 Catholic Rural Life Conference
 Christian Brothers College
 Mr. and Mrs. V. J. Clemens
 Dr. and Mrs. J. E. Colon
 Compliments of a Friend
 Compliments of a Friend
 Compliments of a Friend
 Mr. and Mrs. John J. Connell
 Mrs. Tom Daly
 Dr. and Mrs. Frank Demko
 Mr. William J. Donley
 Mrs. E. C. Duerr
 Mr. and Mrs. Louis Egger
 Mr. and Mrs. H. Vaughn Fairchild
 Mrs. John F. Fiorino
 Mr. and Mrs. C. C. Fischer
 Fontbonne Athletic Association
 Fontbonne College Alumnae
 Mr. Patrick J. Gibbons
 Rev. John J. Gilsenan
 Rev. Patrick J. Halloran, S. J.

Miss Angela M. Hannagan
 Mr. and Mrs. E. M. Harrington
 Mr. and Mrs. Earl V. Jemison
 Mr. and Mrs. J. B. Johans
 Mr. and Mrs. Arthur Keller
 Mrs. Margaret M. Kingston
 Dolores Kinsella
 Mr. and Mrs. Arthur Klinge
 Mr. and Mrs. C. J. Koetting
 Dr. and Mrs. William Koutsoumpas
 Dr. and Mrs. Helmuth Kramolowsky
 Mr. and Mrs. Louis Landwehr
 Loose-Wiles Biscuit Company
 Mrs. M. Lunsmann
 Mr. and Mrs. John F. Maertz
 Mr. and Mrs. S. A. Mansour
 Mr. and Mrs. George A. McCalpin
 Mr. and Mrs. George O. McNamee
 Meletio Sea Foods
 Miss Mary Emily Mitchell
 Mr. and Mrs. William A. Moore
 Mr. and Mrs. George Mueller
 Mr. and Mrs. A. G. Mungenast
 Mr. and Mrs. Joseph L. Nagle
 Mr. and Mrs. Francis P. Nash
 Mr. and Mrs. A. J. Neumeyer
 Mr. and Mrs. Alfred J. Noble
 Mrs. James Nolan
 Nordman Printing Company
 Mr. and Mrs. H. W. Ostermeier
 Ostertag Brothers Florists
 Mr. and Mrs. R. T. Perez
 Mr. and Mrs. Harry J. Petrequin

OUR SPONSORS

Mr. and Mrs. Joseph S. Riordan
Mr. and Mrs. H. F. Rodegast
Mr. and Mrs. Frank P. Ruprecht
Mr. and Mrs. Charles M. Ryan
Mr. and Mrs. August Sabadell
Miss Dorothy Sackbauer
St. Ann's Parish, Normandy
Mr. and Mrs. D. A. Salome
Mr. and Mrs. E. G. Sappington
Mrs. L. R. Sauvage
Mr. and Mrs. George J. Schneider
Mr. and Mrs. J. Noel Schweers

Mr. and Mrs. George Seroogy
Mr. and Mrs. O. N. Speckart
Msgr. John P. Spencer
Rev. J. J. Taugher, C. M.
Mrs. R. W. Temm
Mr. and Mrs. B. A. Thien
Mr. and Mrs. H. R. Turnquist
Mr. and Mrs. Richard B. Vessell
The Vincentian Press
Mr. and Mrs. B. Weidle
Mr. and Mrs. Jerome A. Wilkerson
Mrs. Nell G. Williams

OUR PATRONS

Ginny AuBuchon
 Mr. and Mrs. William Barry, Jr.
 Mr. and Mrs. W. A. Blase
 Mr. and Mrs. Lester J. Bona
 Rt. Rev. Msgr. Nicholas Brinkman
 Jane Marie Buford
 Mr. and Mrs. G. H. Buri
 Jane Buri
 Mr. and Mrs. James Bussmann
 Rev. John H. Byrne
 Rev. Leo C. Byrne
 Mr. and Mrs. Hugh Carroll
 Mr. and Mrs. L. G. Chandler
 Pat and Terry Chandler
 Mr. and Mrs. T. N. Chase
 Mr. and Mrs. Earl E. Coghill
 Compliments of a Friend
 Mr. Frank Conroy
 Cracker and Pixie
 Dorothy Daly
 Mr. and Mrs. Clem H. Deck
 Mr. and Mrs. J. W. Delabar
 Mr. and Mrs. Michael Dolan
 Mr. and Mrs. H. A. Dreifke
 Mrs. G. DuBois
 Therese M. Fischer
 Mr. and Mrs. F. Fitz-Patrick
 Fontbonne Glee Club
 Mr. and Mrs. U. H. Freesmeier
 Mrs. Lorayne Fromshon
 Mr. and Mrs. Joseph W. Guelker
 Mrs. Fred Haper
 Jeanne and Audrey

Josie and Anne
 Rev. R. L. Kaiser
 Mr. and Mrs. A. C. Kaletta
 Mr. and Mrs. F. Kaliphy
 Maddalynne Laux
 Mr. Austin Lieber
 Mr. and Mrs. Leo C. Liston
 Mr. and Mrs. Robert E. Lowther
 Mr. and Mrs. E. A. Maender
 Mr. and Mrs. R. W. May
 Miss Mary McCabe
 Mr. and Mrs. D. J. McKay
 Mr. and Mrs. L. McShane
 Mr. and Mrs. Jas. T. McWilliams
 Mrs. William Metzger
 Lt. and Mrs. E. J. Morrison
 Miss Belle Marie Mullins
 Mr. and Mrs. A. S. Najjar
 Miss Cecilia Najjar
 Mr. Eddie Najjar
 Miss Emmaline Najjar
 Mr. Ernest Najjar
 Miss Jeanette Najjar
 Mr. and Mrs. M. S. Najjar
 Mr. M. S. Najjar, Jr.
 Mr. and Mrs. Sammy Najjar
 Mr. Selime Najjar
 Mr. T. S. Najjar
 Miss Audrey Naumann
 Mrs. Russe T. Niemeier
 Mr. and Mrs. John O'Kane
 Mr. and Mrs. J. J. Pechman
 Peter's Pantry—Jane and Rosie

OUR PATRONS

Joan and Mary Elizabeth Petrequin

Mimi Piket

Mr. and Mrs. Piket

Mr. and Mrs. E. F. Rau

Ruth Rau

Mr. and Mrs. Charles G. Richey

Mary Ann Riordan

Monica and Robert Roach

Mr. and Mrs. Harry Rohde

Rev. George M. Ryan

Miss Mary Virginia Ryan

Mr. Joseph Salome

Miss Mary Ann Salome

Miss Eleanor Schmitt

Mary Elizabeth Schneider

Mr. and Mrs. John M. Sedlmayr

Mr. and Mrs. J. G. Shelton

Eulalia Springman

Margaret Springman

Marie Louise Stasi

Msgr. B. Stolte

Mr. and Mrs. John M. Storm, Sr.

Mr. and Mrs. Sim C. Tracy

Mrs. Mary T. Uhri

Mr. and Mrs. S. F. Vande Walle

Mrs. Charles M. Walters, Jr.

Catherine Weidle

Mr. and Mrs. L. W. Weir

THE PRIDE OF FONTBONNE COLLEGE
AND ST. LOUISANS

Joe Garavelli Restaurant
The Rendezvous of Fontbonne Girls

AUG. SABADELL, Pres.

DeBaliviere and DeGiverville

FOrest 1166

DACEY & COMPANY

Wholesale Distributors

Fresh Fruits and Vegetables

1	SERVING	1
	CLUBS	
8	HOTELS	9
5	INSTITUTIONS	4
	RESTAURANTS	
2	RETAIL GROCERS	6

1201-1211 NORTH BROADWAY

"94 Years of Service in St. Louis"

Distinctive Hair Styles

by

DON MARTINEZ

COMPLETE BEAUTY SERVICE

in Air Conditioned Shop

8111 MARYLAND

DElmar 5009



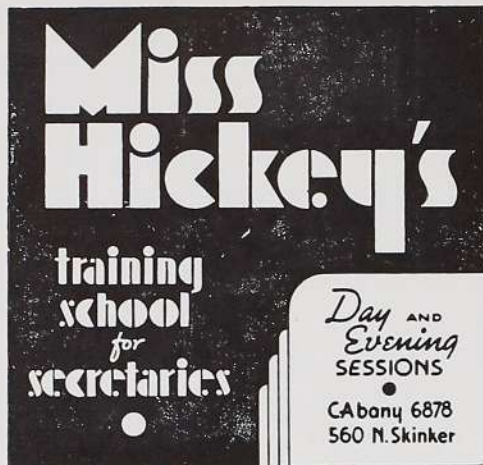
For Photographs

Call

PIAGET

□ □ □

FRANKLIN 1650



*We're just thirteen little aces
With happy and healthy faces
Who bow and make our sad farewell
To the Alma Mater we love so well.*

Klinge	Lee
Kathy	Lout
Mariette	'Child
Bease	George
Shirley	Colleen
Maggie	Margie
Steu	

BEST WISHES TO THE 1946 FONTBONNE

LANDWEHR'S DAIRY

JEFFERSON CITY, MO.

Compliments

of

RONNOCO
COFFEE
CO.

FRANKLIN 5050

□ □ □

Greetings

from

A FRIEND

□ □ □

The
SENIORS

MAin 0874

MAin 0874

Established 1865

James Mulligan Printing and
Publishing Co.

1808 Washington Avenue

St. Louis 3, Mo.

PRINTING

LITHOGRAPHING

Securities
Investment
Company

OF ST. LOUIS

□ □ □

AUTOMOBILE
FINANCING

□ □ □

4120 Lindell Blvd.

JEfferson 2710

SPIES-BRADBURN,
INC.

School Supplies

913 LOCUST STREET

ST. LOUIS, MO.

GArfield 1685

PUERTO RICO

"island of enchantment"

will always welcome you

RAYDA

MARIA

DINORAH

Buford Chevrolet Co.

144 SOUTH MAIN STREET

FREDERICKTOWN, MO.

Phone 155

SHATTINGER
PIANO & MUSIC CO.
331-339 ARCADE BLDG.
8TH & OLIVE STS., ST. LOUIS

PUBLISHERS

Sheet Music . . . Studies

PIANOS

Shattinger, Kranich and Bach

Compliments

of

FONTBONNE
COLLEGE
FATHERS'
CLUB

Happiness and Success

TO THE

CLASS OF 1946

from

THE JUNIORS

□ □ □

Compliments

of

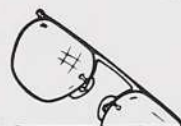
A FRIEND

□ □ □

GIVE YOUR EYES

The Special Care This
PRICELESS POSSESSION
Deserves

*An Authoritative Booklet on the
Care of Eyes Will Be Sent Upon
Request*



Erker's 

610 OLIVE

518 NORTH GRAND

Guild Opticians

LAWYERS TITLE COMPANY
OF MISSOURI

712 CHESTNUT STREET
ST. LOUIS, MISSOURI

RALPH C. BECKER
President

ADOLPH C. KRAUS
Vice-President

Best Wishes

of

MR. AND MRS.
WILLIAM LAUX, JR.

Covers and Bindings

for the

1946 FONTBONNE

by

Becktold Company

St. Louis, Mo.

CLARKE & GABLER INC.
OPTICIANS

QUALITY YET REASONABLE

JEfferson 9347

522 NORTH GRAND

OPPOSITE FOX THEATRE

*We the Class of Forty-eight
Present our greetings here,
And for our Fontbonne, one and all,
We give a rousing cheer!*

*Because there isn't room for all
We Sophomores wish to say,
For our dear Fontbonne, one and all,
We'll shout, "Hip, hip, Hooray!"*



THE SOPHOMORES

Duesen Sportswear

2207 SOUTH 39TH STREET

ST. LOUIS 10, MO.

□ □ □

ALL DESIGNS ARE

ORIGINALS

BY

DUESEN

a name of distinction

□ □ □

PRospect 2568

Best Wishes

of

Fontbonne

College

Mothers'

Club

SOUTH SIDE
ROOFING CO.

Roofing and Repairs

Promptly Attended To

4212-14 GRAVOIS AVE.
ST. LOUIS, MO.

HENRY BINDER
FLanders 6010

Office Phone
HUdson 0230

GLASER
DRUG
COMPANY

BE HAPPY
HA HA

Thelma Storm
Jane Kelly
Patsy Davison
McWilliams

Countryside Florist



9800 MANCHESTER
REpublic 1300

BADER'S
THE HOUSE OF QUALITY
Art Supplies



1112 LOCUST
ST. LOUIS, MO.

Compliments
of

TOWN HALL



6736 CLAYTON ROAD
(Postal Zone 17)

Best Wishes
OF
The
FRESHMAN CLASS

Wiese Printing
Company

*Printers of
School Annuals*



2129 PINE STREET

*Compliments
of*

KONCEN MEAT
COMPANY

Kaletta Statuary
Company

STATUARY, ALTARS AND
CHURCH FURNISHINGS
VESTMENTS — BRASS GOODS

3715-21 California Avenue
St. Louis, Mo.
PRospect 1131

ST. JOSEPH'S ACADEMY
FONTBONNE

•
A Catholic High School for Girls
•

SISTERS OF ST. JOSEPH OF CARONDELET
WYDOWN AND BIG BEND BOULEVARDS
ST. LOUIS 5, MISSOURI

Compliments of

Boggiano Brothers
Printing Company

Printers and Stationers

JEfferson 0968
2927 Olive Street St. Louis, Mo.

*Compliments
of*

VELVET FREEZE
INC.

MISSOURI
STABLES,
INC.

*Rental . Boarding
Training*

ADJACENT TO FOREST PARK

Competent Riding Instructors

Only Indoor Riding Arena in St. Louis

Saddle Horses Bought and Sold

5200 BERTHOLD
STerling 2408

Compliments

of

John S. Nooter
Boiler Works

◆ ◆ ◆

1401 SOUTH SECOND STREET

BEST WISHES

from

"The Sally's in Our Alley"

Cleo	Hank
Sue	Irish
Bunny	Slats
Pat	Tootie
Mitch	Willie

ANOTHER BOOK BY

CENTRAL
CENTRAL ENGRAVING COMPANY

◆ ◆ ◆

114 NORTH SEVENTH STREET ST. LOUIS, MISSOURI

THE ELEVENTH HOUR

presents

"ELEVEN GIRLS"

June Connell	Margaret Rohde
Peggy Phelan	Anne Weir
Jane O'Malley	Pat Corkery
Marian O'Malley	Betty Lux
Mary McDonnell	
Ann O'Connell	
Kay O'Hanlon	

SPECIAL ORDER WORK

CHestnut 0090

MONTI JEWELRY
COMPANY

SCHOOL RINGS : PINS
MEDALS

◆ ◆ ◆

531 ARCADE BUILDING
ST. LOUIS, MO.

SOUTHERN COMFORT

*The Grand
Old Drink
of the South*



ONE HUNDRED [100 PROOF] PROOF LIQUEUR

SOUTHERN COMFORT CORPORATION • SAINT LOUIS, MO.

MAX ZUCKER

Flowers

• • •

6500 CLAYTON ROAD
STerling 4242

GREETINGS

from

"THE FUN 'N FROLIC
GALS"

THEO
ASTRID
MARGIE
TERRY
MILLIE
JAN

*Our faces you may seldom see
But on this page our names do be,
Now 'n forever, we'll hold so dear
The lessons we larnt this year.*

Charlotte Nash
Ann Weber
Maria Castaner
Maggie Landwehr
Madalynne Laux
Sally Williams

Wm. Clarkson & Sons

Importers of

*Serges, Veilings, Linens
Laces, Silks*

612-614 FRANKLIN AVE.
ST. LOUIS, MO.

Compliments
of
Gaines Hardwood
Lumber Company

HAMMOND ORGANS—SOLOVOX



STEINWAY
CHICKERING
GEORGE STECK
EVERETT
and other fine
Pianos

AEOLIAN COMPANY OF MO.
W. P. CHRISLER, President
1004 OLIVE STREET ST. LOUIS

IT'S
SUNFREZE
ICE CREAM

JEfferson 2522

4424 West Papin

HILAND 4141

Charlie Mudd
Standard Service



*The Station With the
Big Sign*

SKINKER AT CLAYTON



We Never Close

HILAND 9687

Summer and Fall Classes

*Secretarial and Stenographic
Accounting, Typewriting*

Morning, Afternoon, and Evening
Sessions

RUBICAM SCHOOL

4933 Delmar FOrest 3900

3473 South Grand . . . LAclede 0440

Phone GARfield 6297

Expert

Optometrists and Opticians

DR. ALOIS A. WINTERER

DR. GEORGE A. WINTERER

DR. JEROME A. KIPPENBERGER

*Eyes Scientifically Examined and
Glasses Made to Correct All Defects of
the Eye*

202 North Seventh (Near Pine)
ST. LOUIS

THE PARKMOOR

All-Cream Ice Cream

Delicious Sandwiches

Best Wishes

from

Peacock Shoe Shop

815 LOCUST STREET

OVER 50 YEARS

Specializing in Fabrics

100% Wools
Pure Silks

De Luxe Rayons
Exclusive Prints

315
N. 10th



Central
6350

Closed Every Thursday

Clayton Music Shoppe

6711 CLAYTON ROAD
Opposite Esquire Theatre

*Records, Radios, Instruments
Refrigerators and Appliances*

PArkview 7005

Compliments

of

GUTMAN'S

CLAYTON

8019 FORSYTHE BOULEVARD
CLAYTON, MO.

Selden Cooper

GEORGE VANDERBILT HOTEL
ASHEVILLE, N.C.



smart gifts for every occasion

Compliments
of
A FRIEND

You'll Like the Flavor and Tenderness of

KREY'S

TENDERATED HAM *Ready to Serve*

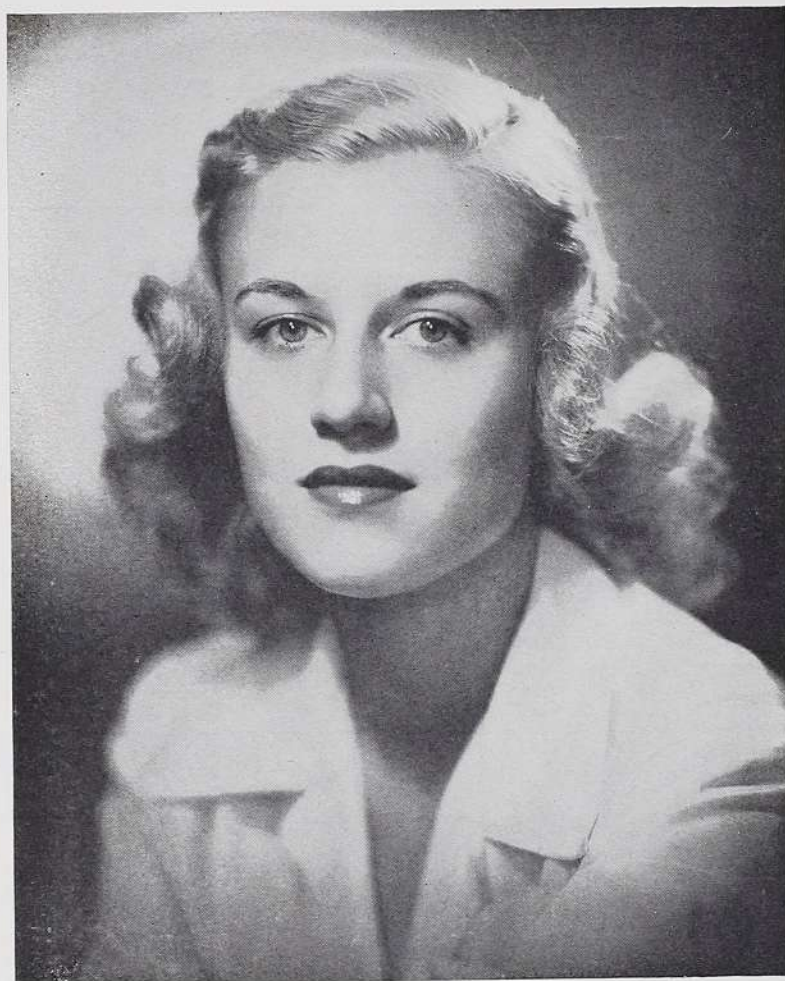
You'll also like the economy and convenience—it's ready to eat—no cooking necessary, no fuel cost, no shrinkage in preparing. You get every pound you pay for.

The Largest Selling Ham in St. Louis

Edwyn

Presents

Fontbonne's Most Attractive Graduate of '46



JEANNE BONA

Distinctive Portraits for the Fontbonne

EDWYN

38 NORTH EUCLID

ST. LOUIS

ROSEDALE 4575

Fontbonne College

offers you

a Catholic college education with courses leading to
the degree of Bachelor of Arts, Bachelor of Science,
and Bachelor of Music in the following major fields:

ART

CLASSICAL LANGUAGES

ENGLISH and JOURNALISM

MODERN LANGUAGES

MUSIC

SPEECH and DRAMATIC ART

MATHEMATICS

BIOLOGY and CHEMISTRY

PHYSICAL EDUCATION

GENERAL HOME ECONOMICS

ECONOMICS

CLOTHING and DRESS DESIGN

BUSINESS

INTERIOR DECORATING

EDUCATION

DIETETICS

HISTORY and GOVERNMENT

PHILOSOPHY

PSYCHOLOGY

SOCIOLOGY

FAMILY

*A Catholic Institution for the
Higher Education of Women*

*A Corporate College of
ST. LOUIS UNIVERSITY*

FONTBONNE COLLEGE

ST. LOUIS 5, MISSOURI

Conducted by the Sisters of St. Joseph of Carondelet

JOSEPH WARD
PAINTING COMPANY

Industrial . . .
PAINTING CONTRACTORS

SAINT LOUIS, MISSOURI

STUDENT DIRECTORY

A

Abkemeier, Agnes Lorraine, 3012 Osage Street, St. Louis 18, Mo. LO 0168.
 Abt, Helen Carole, 6109 Washington, St. Louis 12, Mo. CA 4877.
 Adams, Alice Louise, 7350 Colgate, St. Louis 5, Mo. CA 5950.
 Alivernia, Rosemary, 3009 Abner Place, St. Louis 20, Mo. EV 0226.
 Andriano, Rita Marie, 300 Cahoon, Fredericktown, Mo.
 Ashby, Audrey, 6690 Oakland Ave., St. Louis, Mo. HI 2478.
 Ashe, Mary, 7559 Gannon, St. Louis 5, Mo. PA 3943.
 AuBuchon, Mary Virginia, 7225 Zephyr Place, St. Louis 17, Mo. HI 5773.
 Auringer, Mary Anne, 130 West Monroe, Kirkwood 22, Mo. KI 4713-W.
 Aydt, Alice Marie, Ridgeway, Ill.

B

Bass, June Elaine, 723 Greene Street, Augusta, Ga.
 Beasley, Ann Louise, 3979 Canterbury Drive, St. Louis 21, Mo. GO 2254.
 Beck, Gloria Marie, 2 Warson Lane, St. Louis 5, Mo. WY 1348.
 Benz, Louise, 3216 North Dakota Street, St. Louis 11, Mo. LO 7034.
 Blase, Audrey, 1159 O'Day Ave., Kirkwood 22, Mo. RE 5740.
 Bloomfield, Betty Belle, New Madrid, Mo.
 Boedges, Marie, 5440 Finkman Ave., St. Louis 9, Mo. FL 1762.
 Boismenu, Jeanne, 544 North 26th Street, East St. Louis, Ill. East 6290.
 Bona, Margaret Jeanne, 3935a Shaw Ave., St. Louis 10, Mo. GR 1834.
 Bonacci, Jeanne Ann, 611 Second, North, Hurley, Wis. 1587-M.
 Brandau, Mary Jane, 4415 Sulphur, St. Louis 9, Mo. HU 6451.
 Breiding, Ann, 1903 Lafayette, St. Louis, Mo. MU 4341.
 Brotherton, Mary Anne, 1317 Highland Ave., Augusta, Ga. 3-7497.
 Buckman, Therese, Shelbina, Mo.
 Buford, Jane Marie, 152 South Main Street, Fredericktown, Mo.
 Burchfiel, Marjorie, 7600 Teasdale, St. Louis 5, Mo. PA 5059.
 Buri, Jane, 4545 Durant, St. Louis 15, Mo. EV 6586.
 Burke, Rosemary Helen, 4118a Clarence, St. Louis 15, Mo. GO 2682.
 Burns, Virginia, 825 Audubon Drive, St. Louis 5, Mo. CA 6348.
 Bussmann, Ruth Ann, 11 Kingsbury Place, St. Louis 12, Mo. FO 1383.
 Byrne, Kathleen Eleanor, 4015 Magnolia, St. Louis 10, Mo. PR 4403.
 Byrne, Nancy Catherine, 5227 Murdoch, St. Louis 9, Mo. HU 2372.

C

Camper, Lorraine, 800 Pine, Green Bay, Wis. HO 3885.
 Carr, Ruth Marie, 8618 Henry Ave., St. Louis 21, Mo. MU 7267.
 Carroll, Mary Margaret, 4518 Lexington, St. Louis 15, Mo. GO 5337.
 Cassidy, June Lois, 5116 Maffitt, St. Louis 13, Mo. MU 4152.
 Castaner, Maria Magdalena, Box 13, Jayuya, Puerto Rico.
 Chandler, Patricia Anne, 1604 South Utica, Tulsa 4, Okla.
 Chandler, Theresa, 1604 South Utica, Tulsa 4, Okla.
 Chapman, Dolores, 2504 Sulphur Ave., St. Louis 10, Mo. HI 8243.
 Chase, Jeanne, 5306 Queens Ave., St. Louis 15, Mo. GO 2622.
 Cherrito, Catherine, 402 Holmes Street, Kansas City, Mo.
 Clemens, Anne Marie, 806 Williams Street, Cape Girardeau, Mo. Cape 1316.
 Coff, Margaret Mary, 8755 Bridgeport, St. Louis 17, Mo. RE 6740.
 Coghill, Mary Ann, 4983 Itaska Street, St. Louis 9, Mo. FL 2475.
 Colon, Dinorah Julia, Font Martello 19, Humacao, Puerto Rico.
 Conboy, Audrey, Shelbina, Mo.
 Connell, Mary June, 92 Webster Woods, St. Louis 19, Mo. RE 6025.
 Coplan, Jean, 7800 Lafon Place, St. Louis 5, Mo. PA 9797.
 Corkery, Patricia, 1411 Silverton Place, St. Louis 17, Mo. HI 1067.

D

Daly, Dorothy, 2201 South T, Fort Smith, Ark.
 Davison, Jeanne Conway, 4 Pitman Place, St. Louis 22, Mo. KI 1971.
 Deck, Margaret, 3840 Ashland Ave., St. Louis 7, Mo. NE 2088.
 Delabar, Mary Jane, 5151 Terry, St. Louis 15, Mo. MU 5882.
 Demko, Betty, 6121 Coronado, St. Louis 16, Mo. HU 6121.
 Dofing, Rose Alma, 5049 Rhodes Ave., St. Louis 9, Mo. FL 2459.
 Dolan, Peggy Cecilia, 5462 Oricle, St. Louis 20, Mo. GO 4469.
 Donley, Patricia Evelyn, 2112 Linton Ave., St. Louis 7, Mo. GA 1846.
 Donley, Rosemary Ellen, 6034 Shulte Ave., St. Louis 20, Mo. EV 2085.
 Doyle, Marjorie, 5819 South Kingshighway, St. Louis 9, Mo. FL 5895.
 Dreifke, Anne Marie, 5466 Plover Ave., St. Louis 20, Mo. GO 7873.
 DuBois, Margaret Mary, 9410 Sanora, St. Louis 17, Mo. WE 5613-W.
 Duerr, Patricia Ann, 404 East Ste. Maries, Perryville, Mo.
 Dwyer, Mary Frances, 3941 Lindell Blvd., St. Louis 8, Mo. JE 1363.

E

Eckert, Jane, 1280 Hamilton, St. Louis 12, Mo. MU 5647.
 Egger, Virginia Mary, 6958 Marquette Ave., St. Louis 9, Mo. HI 6579.
 Enright, Rosemary Hansen, 5635 Mimika Street, St. Louis 20, Mo. GO 6404.

STUDENT DIRECTORY

F

Fairchild, Louise, 2511 Miner Street, Idaho Springs, Colo.
 Farrell, Marion Grace, 7352 Pershing, St. Louis 5, Mo. DE 2970.
 Finazzo, Mary Loretta, 4729 Labadie, St. Louis 15, Mo. CO 6721.
 Finke, Virginia Elizabeth, 4481 Forest Park, St. Louis 8, Mo. NE 2556.
 Finn, Carolyn Ann, 5802 Central Ave., Indianapolis, Ind.
 Fischer, Therese Marie, 320 St. Louis Road, East Alton, Ill.
 Fitz-Patrick, Mary Patricia, 131 Forrest Ave., Atlanta Ga. MA 2896.
 Foerster, Betty Anne, 8515 Colonial Lane, St. Louis, Mo. CA 5940.
 Freesmeyer, Eleanor, 7238 Normandy Place, St. Louis 21, Mo. MU 3334.
 Fricke, Vourdonna May, 4096 Holly Hills, St. Louis 16, Mo. HU 4295.
 Fromshon, Charlotte, 1349 North Highland Ave., N. E., Atlanta, Ga. VE 0608.

G

Ganser, Gloria Ann, 1014 Claytonia Terrace, St. Louis 17, Mo. HI 5997.
 Garcia, Eileen Mary, 5024 West Florissant, St. Louis 15, Mo. GO 2587.
 Gibbons, Norrine Marie, 5736 McPherson, St. Louis 12, Mo. FO 5640.
 Gleeson, Shirley, 3730 Lindell, St. Louis 8, Mo. NE 1225.
 Goostree, Joan, 1 Douglass Lane, St. Louis 22, Mo. KI 4407.
 Graupner, Ann, 4528 Elmbank, St. Louis 15, Mo. GO 4067.
 Guelker, Marceline Ann, 6102 Wyma Ave., Pine Lawn 20, Mo. GO 0348.

H

Haemerle, Betty Jane, 4543 Nadine Court, St. Louis 21, Mo. EV 5780.
 Haley, Marilyn Adele, 701 West Lockwood, St. Louis 22, Mo. KI 3339.
 Hanlon, Patricia Ruth, 7444 Florissant Road, St. Louis 21, Mo. MU 0150.
 Hannefin, Patricia, 7254 Delta Ave., St. Louis 17, Mo. HI 8319.
 Hennerich, Ethel Laura, 7512 Rosedale Drive, St. Louis 21, Mo. EV 5865.
 Henschke, Dorothy Jane, 432 East Big Bend Blvd., Webster Groves 19, Mo. RE 7238.
 Hoffman, Frances, 5636 Rhodes Ave., St. Louis 9, Mo. FL 6684.
 Holbrock, Theodora Myrtle, 1105 Stillwood Drive, N. E., Atlanta, Ga.
 Holmberg, Helen, 8145 Washington, St. Louis 14, Mo. WI 0873.
 Hough, Lois Ann, 7212 Chamberlain, University City 5, Mo. PA 5811.
 Houlehin, Betty Anne, 7259 Lindell, St. Louis 5, Mo. PA 3106.

I

Indermark, Helen, 4638 Anderson Ave., St. Louis 15, Mo. EV 7645.

J

Jemison, Dorothy Ann, 1002 North 13th, Keokuk, Iowa.
 Johans, Rita Rose, 5612 Goethe Ave., St. Louis 9, Mo. FL 0977.

K

Kaletta, Elizabeth, 7249 Maryland Drive, St. Louis 5, Mo. CA 5694.
 Keller, Jacqueline, 24 Greendale Drive, St. Louis 21, Mo. PA 8533.
 Kelly, Dolores, 6346 Pershing Ave., St. Louis 5, Mo. CA 8170.
 Kelly, Dorothy Elsie, 6346 Pershing Ave., St. Louis 5, Mo. CA 8170.
 Kelly, Mary Catherine, 5717 Astra Ave., St. Louis 21, Mo. EV 4611.
 Kingston, Margaret Ann, 3955 Maffitt, St. Louis 13, Mo. FR 3449.
 Kinsella, Dolores Julia, 4205 Tamm Ave., St. Louis 9, Mo. FL 2884.
 Kist, Mary Magdelene, 2635 Clara Ave., St. Louis 12, Mo. GO 8778.
 Klinge, Elizabeth, 6173 Pershing Ave., St. Louis 12, Mo. PA 5705.
 Klutho, Mary Joan, 6149 Marwinette, St. Louis 16, Mo. HU 5548.
 Koch, Monica, Cadet, Mo.
 Koetting, Anita Julia, 525 Jefferson, Ste. Genevieve, Mo. 370.
 Koutsoumpas, Harriet, 3440 Humphrey, St. Louis 18, Mo. GR 8197.
 Kramcowsky, Anne, 6920 Cornell, St. Louis 5, Mo. CA 3590.

L

Lamwersiek, Ruth Louise, 3006 Hatherly Drive, St. Louis 21, Mo. EV 7182.
 Landwehr, Margaret Ann, 830 Fairmount Blvd., Jefferson City, Mo.
 Laux, Madalynne Florence, 1505 Oakcrest Court, Appleton, Wis. 4481.
 Leahy, Rosemary Lucille, 4108 Camellia Ave., St. Louis 15, Mo. GO 1943.
 Leamy, Doris Jean, 4981 Thrush, St. Louis 20, Mo. GO 5652.
 Lee, Donna Mae, 364 North Hanley Road, St. Louis 5, Mo. CA 1248.
 LeMaster, Jeanne Marie, 7200 Northmoor Drive, St. Louis 5, Mo. DE 0634.
 Liedke, Helen Marie, 238 Ivy Street, Atlanta, Ga.
 Lietzmann, Darlette, 7507 Oxford Drive, St. Louis 5, Mo. PA 7388.
 Linsemmann, Dorothy Irene, 3966 Dover Place, St. Louis 16, Mo. HU 5256.
 Long, Mary Louise, 4624 McPherson, St. Louis 8, Mo. FO 8596.
 Lunsman, Gloria, 2431 Bacon Street, St. Louis 6, Mo.
 Lux, Betty, 7027 Berthold, St. Louis 17, Mo. HI 3059.

M

Maender, Helen Catherine, 4464 Labadie Ave., St. Louis 15, Mo. CO 0927.
 Maertz, Marjorie Ann, 963 Glen Arden Way, N. E., Atlanta, Ga. HE 6172-R.
 Mansour, Astrid Agatha, Box 226, Lake Village, Ark. 158.
 Mason, Marjorie Ann, 1311 South Kentucky Ave., Evansville, Ind.
 May, Rosemary Ann, 31 Ridgemoor, St. Louis 5, Mo. CA 6034.
 McCaipin, Mary Margaret, 4937 Sutherland Ave., St. Louis 9, Mo. FL 6064.

STUDENT DIRECTORY

McDonald, Agnes Robert, 3627 Page Blvd., St. Louis 13, Mo. NE 3152.
 McDonnell, Mary Catherine, 2510 North Grand Blvd., St. Louis 6, Mo. JE 3264.
 McKay, Patricia, 915 South Bemiston, St. Louis 5, Mo. PA 2712.
 McManus, Mary Teresa, 1001 Adair Ave., N. E., Atlanta, Ga. HE 1071.
 McNamee, Rose Bridgid, 2314 University Street, St. Louis 7, Mo. CH 5425.
 McShane, Mary Margaret, 1105 Seventh Street, Boonville, Mo.
 McWilliams, Doris Marie, 5434 Wren Ave., St. Louis 20, Mo. EV 5480.
 Metzger, Rhea Mae, 7150 Princeton Ave., University City 5, Mo. CA 1388.
 Meyer, Patricia Jean, 6712 McCune, St. Louis 9, Mo. HI 4286.
 Michelson, Sidonia Ann, 53 Ridgemoor, St. Louis 5, Mo. PA 7244.
 Miller, Anne Marie, 1234 Boland Place, St. Louis 17, Mo. ST 0469.
 Milligan, Dorothy, 6560 Necsho Street, St. Louis 9, Mo. FL 3698.
 Milton, Doris Theresa, 408 Fairwood Lane, Kirkwood 22, Mo. KI 4157-J.
 Mitchell, Patricia, 7134 Northmoor Drive, St. Louis 5, Mo. CA 4065.
 Moegle, Mary Shirley, 5700 Mardel, St. Louis 9, Mo. HU 5705.
 Monahan, Mary Ann, 8036 Delmar Blvd., St. Louis 5, Mo. PA 6187.
 Monnig, Gloria Jean, 4812 Wherry, St. Louis 9, Mo. FL 2655.
 Moore, Mary Jeanne, 4635 Penrose, St. Louis 15, Mo. CO 0472.
 Morris, Margaret, 4918 Hammett Place, St. Louis 13, Mo. RO 6990.
 Muenster, Mary Catherine, 5034 Alaska Ave., St. Louis 11, Mo. PL 9234.
 Mulherin, Elizabeth, 1318 Monte Sano Ave., Augusta, Ga. 3-4602.
 Mulherin, Lois, 2705 Henry Street, Augusta, Ga. 3-4822.
 Mulherin, Mary, 1318 Monte Sano Ave., Augusta, Ga. 3-4602.
 Mungenast, Charlotte, 3940 Connecticut Street, St. Louis 16, Mo. LA 8316.
 Munkres, Thelma, 8349 Ardsley Drive, St. Louis 21, Mo. MU 8269.
 Murphy, Mary Jayne, 6502 Oakland, St. Louis 10, Mo. ST 3947.

N

Nagle, Ritarose Mary, 4946 Tieman Ave., St. Louis 23, Mo. HU 4727.
 Nahmensen, Annette, 6536 Odell, St. Louis 9, Mo. ST 1925.
 Nash, Charlotte Ann, 403 South Monroe, Clinton, Ill. 821.
 Neumeyer, Doris Mae, Main Street, Brillion, Wis.
 Newman, Bette, 6165 Westminster, St. Louis 12, Mo. CA 5926.
 Nolan, Jane, 5925 Pershing, St. Louis 12, Mo. PA 4009.

O

Oberdorfer, Mary Janet, 53 Seventh Street, Iron River, Mich. 152.
 O'Connell, Ann, 10300 Lackland Road, St. Louis 14, Mo. WI 0812.
 O'Hanlon, Kay, 7400 Northmoor, St. Louis 5, Mo. CA 0152.
 O'Kane, Marie-Antoinette, 3516 Utah Place, St. Louis 18, Mo. LA 3539.
 O'Keefe, Marjorie Ann, 7052 West Park, St. Louis 17, Mo. HI 2483.
 O'Malley, Jane Constance, 6028 Pershing, St. Louis 12, Mo. CA 5481.
 O'Malley, Marian Loyola, 6028 Pershing, St. Louis 12, Mo. CA 5481.
 Ostermeier, Nancy Jean, 7219 Canterbury Drive, St. Louis 21, Mo. MU 7365.

P

Pechman, Clara Marie, 6041 Washington, St. Louis 12, Mo. CA 0576.
 Perez, Rayda Cristina, 12 Nairn Ave., Santurce, Puerto Rico.
 Perry, Helen, 5715 Rhodes, St. Louis 9, Mo. FL 0638.
 Petrequin, Joan, 375 North Fifth Street, Ste. Genevieve, Mo. 163.
 Petrequin, Mary Elizabeth, 375 North Fifth Street, Ste. Genevieve, Mo. 163.
 Pfeiffer, Gloria, 5720 Walsh, St. Louis 9, Mo. FL 7747.
 Phelan, Elizabeth Ann, 1511 Bellevue Ave., Richmond Heights 17, Mo. ST 5370.
 Phelan, Margaret Mary, 210 Hawthorne, St. Louis 19, Mo. RE 5581.
 Pope, Louise Catherine, 7129 Dartmouth Ave., University City 5, Mo. DE 3973.
 Porporis, Mollie Ann, 1117 Louisville Ave., St. Louis 10, Mo. ST 5673.
 Porter, Joan, 6837 Kingsbury, St. Louis 5, Mo. PA 5588.

Q

Quirk, Nancy, 6059 McPherson, St. Louis 12, Mo. DE 3647.

R

Rau, Ruth Mary, 4000a Connecticut Street, St. Louis 16, Mo. GR 8205.
 Rauth, Marcella Jeanne, 417 South Benton, Cape Girardeau, Mo.
 Rechtien, Lorraine, 4719 Bessie Court, St. Louis 15, Mo. GO 4119.
 Reedy, Mary Jeanne, 5335 Winona, St. Louis 9, Mo. FL 4832.
 Richey, Colleen, 4052 Connecticut Street, St. Louis 16, Mo. LA 3848.
 Riechmann, Mary Lou, 3660 Hartford Street, St. Louis 16, Mo. PR 3867.
 Riordan, Mary Ann, 8038 Gannon, University City 5, Mo. DE 2310.
 Roach, Monica Liston, 830 Purdue Ave., University City 5, Mo. PA 7952.
 Robertson, Dorothy Jean, 316 Skinker Blvd., St. Louis 5, Mo. DE 2035.
 Rodegast, Mary Lee, 1121 North Montgomery, Litchfield, Ill. 456-X.
 Rodegast, Virginia, 1121 North Montgomery, Litchfield, Ill. 456-X.
 Roetto, Mary Ellen, Route 1, Monett, Mo. 23W11.
 Roetto, Mary Kathleen, Route 1, Monett, Mo. 23W11.
 Rohde, Margaret Mary, 4038 Greer Ave., St. Louis 7, Mo. FR 0315.
 Ruprecht, Betty Lou, 21 Old Westbury Lane, St. Louis 19, Mo. RE 5790.
 Ryan, Rosemary Alice, 7158 Pershing Ave., St. Louis 5, Mo. CA 6296.

STUDENT DIRECTORY

S

Sabadell, Margarite, Congress Hotel, St. Louis 8, Mo. FO 7844.
 Salome, Rosaline, 740 Crew Street, S. W., Atlanta, Ga. WA 5649.
 Sappington, Shirley, 5022 Miami, St. Louis 9, Mo. FL 1709.
 Sauvage, Cora Winifred, 23 Cornell, University City 5, Mo. DE 1603.
 Scandiff, Marjorie, 1420 West Lexington Street, Chicago, Ill. MON 0783.
 Schaefer, Jeanne Frances, 5617 Cabanne Ave., St. Louis 12, Mo. FO 0443.
 Schatzman, Jeanne Marie, 7230 Northmoor, St. Louis 5, Mo. CA 3761.
 Schneider, Kathryn, 4956 Arlington, St. Louis 20, Mo. EV 0539.
 Schneider, Mary Elizabeth, 719 North Broadway, Milwaukee 2, Wis.
 Schulman, Peggy, 7459 Amherst, St. Louis, Mo. CA 5614.
 Schumacher, Mary Therese, 4214 Oregon, St. Louis 11, Mo. LO 7744.
 Schweers, Mary Catherine, 1522 Johns Road, Augusta, Ga.
 Scott, Mary Ellen, 1036 Fairmount, St. Louis 10, Mo. ST 2296.
 Sedlmayr, Rosemary Ethel, 4649 Newport Ave., St. Louis 16, Mo. HU 2390.
 Serocoy, Josephine, 218 North Chestnut Ave., Green Bay, Wis.
 Sheinbein, Denalee, Christopher, Ill.
 Shelton, Margaret, 5823a Highland Ave., St. Louis 12, Mo. MU 5743.
 Skarha, Virginia Rose, 1100 Pennsylvania Ave., East St. Louis, Ill.
 Sly, Jane, 3073 Andover Drive, St. Louis 21, Mo. MU 8449.
 Smith, Jacqueline, 4932 Labadie, St. Louis 15, Mo. FO 2862.
 Smith, Mary Ellen, 5033 Northland, St. Louis 13, Mo. RO 4097.
 Smith, Shirley, 7200 Creveling Drive, St. Louis 5, Mo. PA 0102.
 Speckart, Mary, 4324 Euclid Ave., St. Louis 15, Mo. MU 9720.
 Springman, Eulalia Mary, 1129 State Street, Alton, Ill. 2-1958.
 Springman, Margaret, 1129 State Street, Alton, Ill. 2-1958.
 Stasi, Marie Louise, 1118 Pacific Street, Kansas City, Mo. VI 7039.
 Steuterman, Marilyn, 5037 Waterman, St. Louis 8, Mo. RO 8597.
 Storm, Rose Marie, 337 West Madison, St. Louis 22, Mo. KI 1208.
 Strathman, Mildred, 501 Pioneer, Seneca, Kan.
 Streit, Mary Lou, 7539 Wise Ave., St. Louis 17, Mo. HI 3274.
 Stroh, Stella Caroline, 15 Elm Place, Webster Groves 19, Mo. RE 4062.
 Stueber, Mary Alice, 5426 Ruskin, St. Louis 15, Mo. GO 4574.

T

Tauschek, Anne Margaret, New Franken, Wis.
 Temm, Kathryn Adele, 54 Aberdeen, St. Louis 5, Mo. CA 8150.
 Thaman, Audrey Marie, 4028 Wyoming, St. Louis 16, Mo. PR 7437.
 Thien, Bernadine Norine, 6565 Scanlon, St. Louis 9, Mo. HI 2950.
 Tracy, Genevieve, Edgeworth and Midland Roads, Robertson, St. Louis County, Mo. TE 5-2979.
 Tracy, Jane, 65 Crestwood Drive, St. Louis 5, Mo. DE 1035.
 Tracy, Kathryn, Edgeworth and Midland Roads, Robertson, St. Louis County, Mo. TE 5-2979.
 Tuberty, Margaret, 4437 McPherson, St. Louis 8, Mo. JE 9294.
 Tuchsmidt, Mary, 30 Crestwood Drive, St. Louis 5, Mo. CA 8761.
 Turnquist, Mary Lou, 239 West Division Street, Amboy, Ill.

U

Uhri, Marianne Louise, 5069a Mardel, St. Louis 9, Mo. FL 1285.

V

Vande Walle, Elaine, 1200 Cass Street, Green Bay, Wis.
 Vassely, Penelope, 6498 Oakland Ave., St. Louis 10, Mo. ST 0271.
 Verner, Anna Mae, 4405 West Pine Blvd., St. Louis 8, Mo. NE 1792.
 Vessell, Georgia, Route 1, Ste. Genevieve, Mo. 1920.
 Viejo, Marie Silveria, Barbosa 14, Bayamon, Puerto Rico.
 Vogel, Gloria Cecile, 6134 Tennessee Ave., St. Louis 11, Mo. LO 5255.

W

Walters, Gloria Lee, 3958 Flora Place, St. Louis 10, Mo. LA 2848.
 Washburn, Jean Mary, 1653 Dearborn Drive, St. Louis 22, Mo. KI 1076-J.
 Weber, Ann Kimbrough 5216 I. Street, Little Rock, Ark. 3-3240.
 Weidle, Catherine, 3953 Cottage Ave., St. Louis 13, Mo. FR 5637.
 Weir, Anne, 121 Webster Woods, St. Louis 19, Mo. RE 1553.
 Weissenberg, Rosemary, 3242a Pennsylvania, St. Louis 16, Mo. LA 5038.
 Wilkerson, June, 7241 Canterbury Drive, St. Louis 21, Mo. GO 1781.
 Williams, Sally Polk, 484 Sinclair Ave., N. E., Atlanta, Ga.
 Williamson, Mary, 864 Newport, Webster Groves 19, Mo. RE 6542.
 Wolf, Marilyn, 160 Cornelia Ave., Glendale 22, Mo. RE 6241.
 Wolf, Patricia, 160 Cornelia Ave., Glendale 22, Mo. RE 6241.
 Wood, Rosemary Catherine, 5445 North Kingshighway, St. Louis 15, Mo. MU 5248.
 Woodward, Rebecca, 619 Westwood Drive, Clayton 5, Mo. CA 6960.
 Wortman, Ruth, 5444 Walsh Street, St. Louis 9, Mo. FL 6159.
 Wyka Bobbie Mildred, 6104 Reichman, Pine Lawn 20, Mo. CO 4348.

Y

Yungbluth, Betty Ruth, 7019 Dartmouth, St. Louis 5, Mo. PA 4691.

AUTOGRAPHS

AUTOGRAPHS