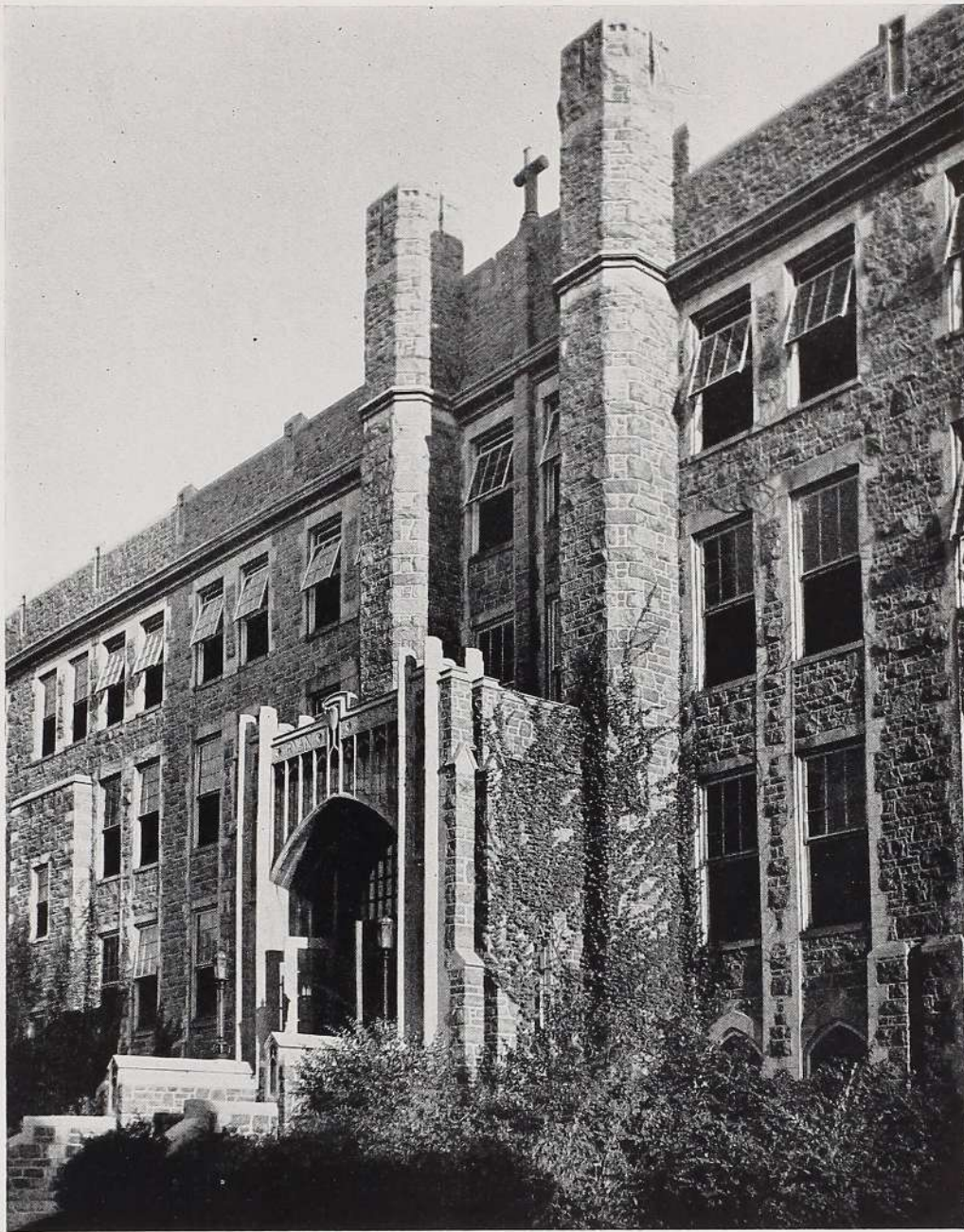




Fontbonne

FONTBONNE LIBRARY



*Fontbonne
Presents*

To A New World

Bring on tomorrow, Life!

*For unafraid, she stands to face the
unknown world,*

*Bring on the strife, the tumult, with the
haunting mystery*

*Of dreams undreamed and hopes not
yet fulfilled.*

*Her head held high, her face turned to-
ward the dawn*

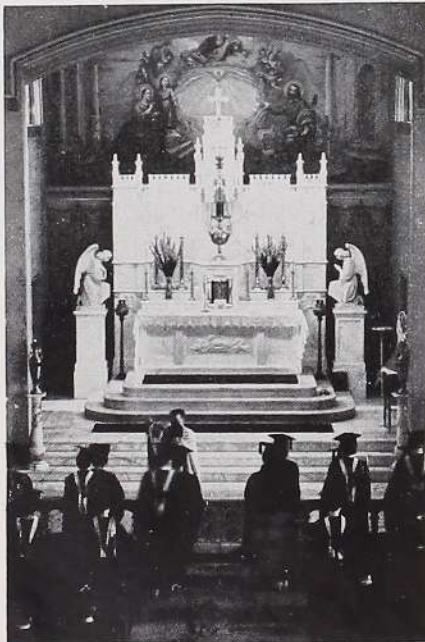
*Exultant stands she on the crest and
scans the height*

*That surges upward to tomorrow's pin-
nacle.*

*With Mary as the Star that guides
her on*

*And fires her soul with Goodness, Beauty,
Truth, and Strength*

What can tomorrow bring!





A New Woman

Dedicated *To Mary, Our Lady* *of Fontbonne*

*From all the forests green with spring,
And all the meadows of the world,
Through fields of children's laughter,
Across the stream of youth
Through ways known only by the joy-
ous heart
Through love we've come
To seek a model for our striving souls.*

*We searched the sky for sign,
The night, the days;
We sought amid the snows
And by a garden path . . .
But only now in silent thought
The answer comes—the quest is done.
Mary, Lady of Fontbonne, you are the
perfect model that we sought—
We give you all we have,
Immortal tribute to your name.*



ne

spring,
ld,
nter,

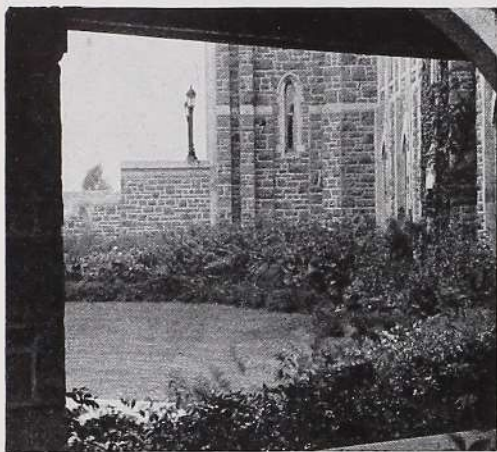
ne joy-

y souls.

s done.
are the
ught—



Strong As The



THE FONTBONNE FOR 1945

*The Annual Publication
of the Students of*

*Fontbonne
College*

ST. LOUIS, MISSOURI

Presented By

BEATRICE BURKE
Editor

ROSALINE SALOME
Feature Editor

MONICA LISTON
Photo Editor

ROSEJOAN KISLING
Business Manager

JANE BURI
Advertising Manager

GLORIA JOHNSTON
Art and Make-up Editor



Fine Arts north entrance in the snow.

Granite

O, Fontbonne, we love you, your purple and gold,

We pledge our allegiance which ne'er shall grow cold,

But strong as the granite that builds your firm walls

Shall lead us to Godward whatever befalls.

In youth's glad fair maytime we came to your arms

Your love has caressed us, has shielded from harms,

Your standards have formed us, your faith has inspired,

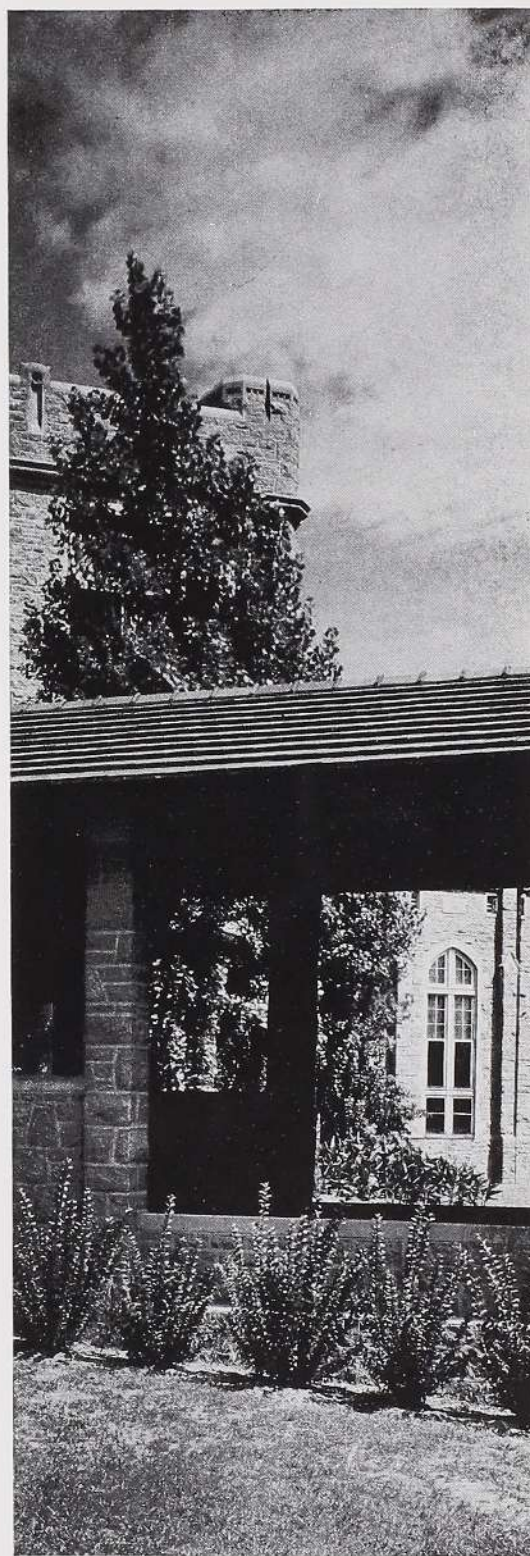
We found in your portals ideals we desired.

O, Fontbonne, we love you, your purple and gold,

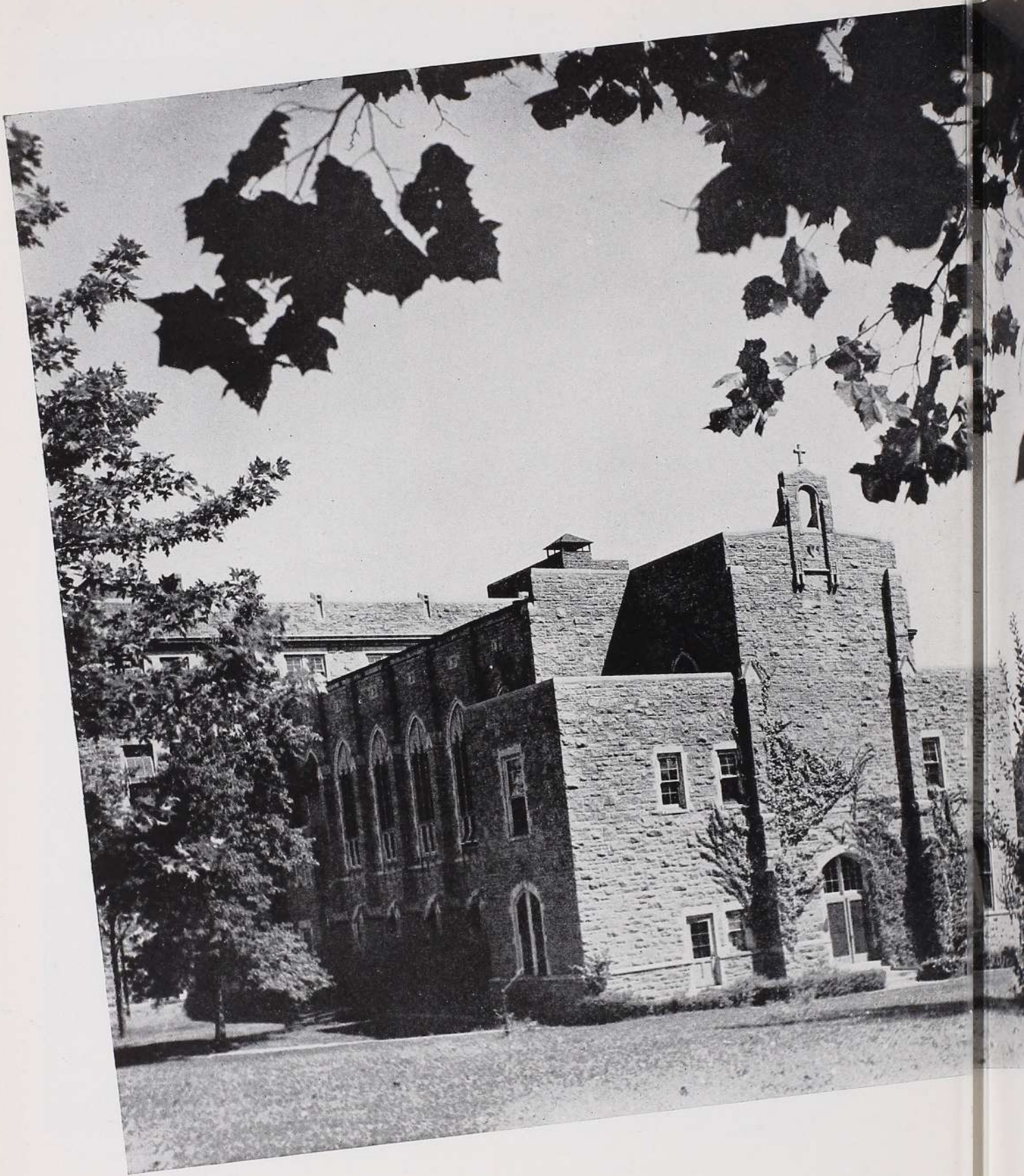
We pledge our allegiance which ne'er shall grow cold,

But strong as the granite that builds your firm walls,

Shall lead us to Godward whatever befalls.



Little Theatre walls reach upward to touch the clouds.





Those who climb the heights can fall as easily to the depths as those who never raised their eyes if they look not into the footsteps of the King who went before them.

Thus we looked, and found the hill not quite so steep, Fontbonne, for in a world near lost, you have raised us up anew.

In you we have been

Led by the Light of Truth

Brought to the Guardian of Goodness

Awakened to the Love of Beauty

Enrapt in the Source of Strength

Staff of Instruction

- MOTHER MARY BERENICE O'NEILL, C.S.J., A.M., Ph.D.
President, Professor of Education, and Director of the Department
- ELEANORA BAER, A.B., Ed.M. Librarian
- SISTER LOUIS JOSEPH BAUER, C.S.J., B.M. . . . Assistant Professor of Music
- SISTER JOHN JOSEPH BEZDEK, C.S.J., A.B., M.M.
Professor of Music and Director of the Department of Music
- SISTER SYLVIA MARIE BOOTHBY, C.S.J., A.M.
Professor of English and Director of the Department
- SISTER RITA MARIE BUSHMAN, C.S.J., A. B. . . . Instructor in Philosophy
- SISTER AGNES LORETTA BYRNE, C.S.J., B.S. . . . Instructor in Biology
- THERESA M. CARMODY, M.S. in Home Economics
*Associate Professor of Home Economics and Associate Director of
 Home Economics*
- SISTER SAINT PAUL CHRISTMAN, C.S.J., A.M.
Associate Professor of Modern Languages
- ALPHONSE H. CLEMENS, A.M., Ph.D.
Professor of Economics and Sociology and Director of the Department
- SISTER HELEN JOSEPH COERVER, C.S.J., M.S.
Instructor in Chemistry and Physics
- SISTER JAMES STANISLAUS CREANE, C.S.J., A.M.
Assistant Professor of Mathematics and Director of the Department
- SISTER ANNE MECHTILDA DOLIN, C.S.J., A.M.
Professor of Classical Languages and Director of the Department
- SISTER ROSE GENEVIEVE DOWNS, C.S.J., M.S. . . . Instructor in Dietetics
- MR. JEROME FRANCIS DUGGAN, LL.M. . . . Instructor in Business Law
- SISTER BERNARD JOSEPH DUNNE, C.S.J., A.M.
Associate Professor of English
- SISTER MARY ATHANASIA DUNNEBACKE, C.S.J., A.M.
Professor of Chemistry
- REVEREND EDWARD E. FINN, S.J., A.M., S.T.L. . . . Instructor in Philosophy
- SISTER MARY BERCHMANS FOURNIER, C.S.J., A.M., Cand. Ph.D.
Professor of Modern Languages and Director of the Department
- REVEREND LANISLAUS GALUS, C.R. Instructor in Religion
- SISTER JOSEPH ALOYSIUS GEISSERT, C.S.J., A.M.
Dean, Professor of History, and Director of the Department
- SISTER MARY FREDERIC GLASER, C.S.J., A.M.
Professor of Modern Languages
- SISTER MADELEINE SOPHIE GOLDKAMP, C.S.J., B.M. . . Instructor in Music
- Mrs. (E. M.) CATHERINE FITZGIBBON HARRINGTON, A.M.
Director of Personnel and Student Guidance

Staff of Instruction

- REVEREND JAMES J. HIGGINS, C.Ss.R., A.M. Lecturer in Religion
- MRS. R. EDITH GREIDERER KAUFMAN, A.M. Instructor in English
- SISTER ROSE AGNES KEYES, C.S.J., M.S.
Assistant Professor of Biology and Director of the Department
- SISTER MARY HILDA LORSBACH, C.S.J., A.B.
Assistant Professor of Commercial Science
- SISTER MARY ALBERTA MAAS, C.S.J., M.M.
Assistant Professor of Music Theory
- SISTER M. DE LA SALLE, C.S.J., B.M. Instructor in Piano
- REVEREND JAMES ALOYSIUS MCWILLIAMS, S.J., A.M., Ph.D.
Professor of Philosophy
- BELLE MARIE MULLINS, B.E., A.B., M.A.
*Assistant Professor of Dramatics and Director of the Department of
 Speech and Dramatics*
- SISTER MARY ELEANOR NASH, C.S.J., A.M.
Associate Professor of History
- MRS. DOYNE CHRISTINE NEAL, F.A.G.O. Instructor in Voice
- SISTER MARY ALFRED NOBLE, C.S.J., A.M., Ph.D.
Professor of Psychology and Director of the Department
- REVEREND LEO J. OHLEYER, O.F.M., S.T.D. . . . Professor of Religion
- SISTER CATHERINE DE RICCI OSTERMANN, C.S.J., A.M.
Professor of Chemistry and Director of the Department
- REVEREND ANTHONY W. POWERS, C.Ss.R. Lecturer in Religion
- SISTER MARGARET JOHN PURCELL, C.S.J., A.M.
Associate Professor of English
- SISTER GEORGIANA MARIE REINHART, C.S.J., A.B. . . . Instructor in Art
- SISTER JOHN MARIE RILEY, C.S.J., A.M., Ph.D.
Instructor in Classical Languages
- SISTER ANASTASIA SCHARFENBERGER, C.S.J., A.B. . Instructor in Education
- SISTER MARY MARTHA SCOTT, C.S.J., M.S. in Home Economics
Associate Professor of Home Economics and Director of the Department
- SISTER MARY EDWINA TOBIN, C.S.J., A.M.
Associate Professor of Classical Languages
- FRANCES TROEMEL, M.S.
Assistant Professor of Art and Director of the Department
- SISTER SUSANNE MARIE VACHON, C.S.J., A.M.
Registrar of the College and Instructor in History
- GWYNETTE CLAUDIA WILLIS, A.B., A.M.
Assistant Professor of Physical Education and Director of the Department



Reverend
J. A. McWilliams

Reverend
Lanislus Galus

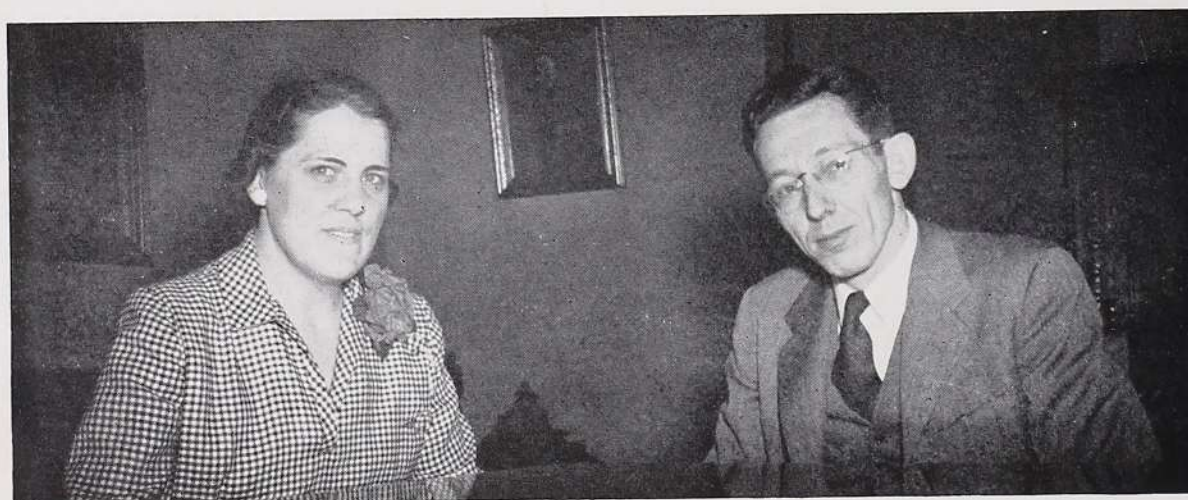
Reverend
Edward E. Finn

Mrs. Doyne Neal

The Fontbonne faculty endeavors to form the Fontbonne girl into a scientist who investigates the whys and wherefores of the natural world, an artist who seeks to re-create the beauties there, and a character who embodies in herself the fruits of both—the investigation of Truth and the imitation of the values by which men live.

She is taught to think deeply, to acknowledge that true freedom bridles self, to keep sight of an ideal, and to pray for faith.

The year after this and then the year after that demand of women not only the traditional requisites of strength of character and practical as well as theoretical knowledge, but also a new drive and firm conviction of the role this generation's women must play in spite of any obstacle.



Miss Eleanora Baer

Dr. Alphonse Clemens

Williams
Galus
Finn
e Neal

Miss Belle Marie Mullins

Reverend A. W. Powers

Mrs. Edith Kaufman

Reverend J. J. Higgins



The war has brought into being a new consciousness of duty never before so necessary, that of womankind toward men fatigued in mind and body by the deadliness of completely mechanized warfare and a civilization distorted by its ravages.

The Fontbonne woman learns that life is a more give than take affair, that man's knowledge of anything is extremely limited, and that she must begin and continue to make decisions and to think for herself.

Intellectually, she is taught Philosophy, the Biological, Physical, or Social Sciences and Mathematics. The integrated humanities course develops her culturally, and Music, Art, History, Modern and Classical Languages further this polish. Home Economics and Physical Education fill out her knowledge of bodily development.

All in all, the Sisters of St. Joseph, our priests, and lay faculty strive daily that each girl may grow to possess those attributes of kindness, sympathy, and understanding which integrate knowledge and make women more beautiful in the eyes of a newly wakened world.



Miss Frances Toemel

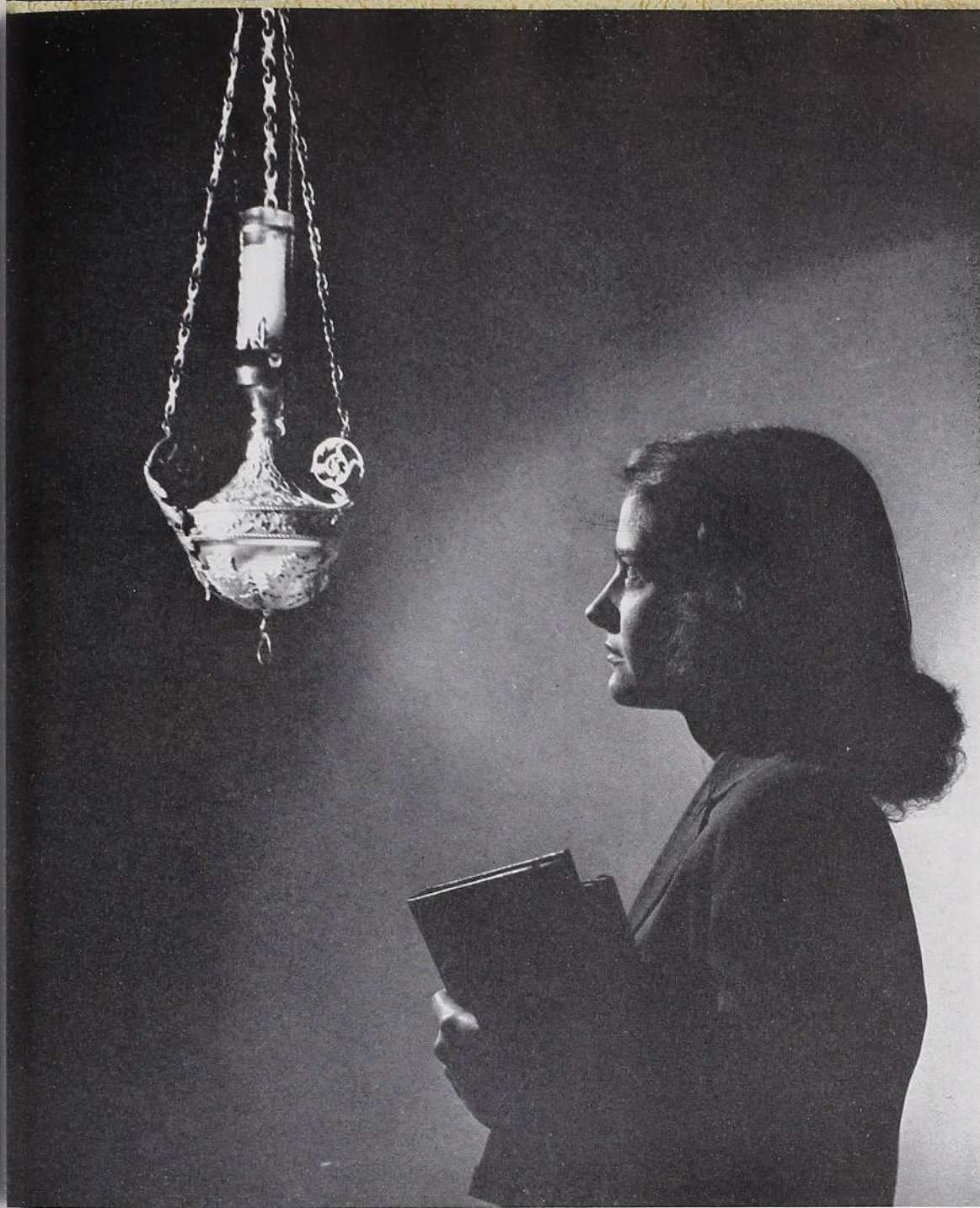
Miss Gwynette Willis

Miss Theresa Carmody

*Groping through darkneses to light
She seeks from Light to find, to learn, to live,
To take from life all its rich forfeit yet to keep
Within her heart the strong bright flame of Truth.*

*Her feet may stumble at the height, yet while
Her eyes to truth's unwavering beacon cling
No rock can turn her foot aside,
No towering precipice can keep her from the Dawn.*

Led By The



he Light of Truth



Betty Raupp

Seniors

KEY DAY

To the traditions of Fontbonne the Class of 1945 has contributed Key Day. On Tuesday, January 23, 1945, the seniors were first presented their keys and rings by the President of the College in solemn ceremony.

OFFICERS

<i>President</i>	BETTY RAUPP
<i>Vice-President</i>	GENEVIEVE WOLF
<i>Secretary</i>	JEAN HOULEHIN
<i>Treasurer</i>	ROSEMARY KENNEDY



Left to right: Genevieve Wolf, Betty Raupp, Jean Houlehin, Rosemary Kennedy.

Social Scientists



AURELIA RUTH SCHINDLER

A. B. in The Family

French Club '42-'43; Social Peace Club '42, '45; Legion of Mary '44; Delta Phi '45.



MARY VIRGINIA KOHL

A. B. in Psychology

Sigma Beta Mu, President '45, Treasurer '43; Daisy Chain '43; Spiritual Council '43, '45; FONTBONNE Staff '42, '43; F. A. A. '42, '43; Legion of Mary '43; Social Peace Club '45; Sodality '43-'45.



Ruth

Ginny

"RUTH"—friendly chatter, earnest eyes, collecting postcards, children, "Apple Blossom."

"GINNY"—tranquil, happy smile, generous, Warsaw Concerto, parties, cool breezes, bridge, "L'Aimant."

Sociologists



MARY ADELE WINTZ

A. B. in Sociology

Footlights Club '42-'45, Secretary '45; Press Club '44-'45; *Font* Staff '45; FONTBONNE Staff '45; Modern Language Club '44; Red Cross '44-'45; Social Peace Club '44-'45.



ROSEMARY CATHERINE HOLDEN

A. B. in Sociology

Social Peace Club '44-'45, President '45; Class Vice-President '43; F. A. A. '42; C. S. M. C. '43-'44; Footlights Club '42-'45; Red Cross Unit '45; Modern Language Club '44-'45.

"MARY ADELE"—languid charm, independent, Jack, walking in the rain, Oklahoma, Candlelight, "Indiscrete."

"ROSEMARY"—collegiate, ever a lady, doll house miniatures, sundaes, earrings, "Tweed."



Mary Adele

Rosemary

Sociologists



ROSEMARY FRANCES CASEY

A. B. in Sociology

Prefect of Sodality '45, Vice-Prefect '44; Glee Club '42-'45, Secretary-Treasurer '44; Maid to May Queen '43; C.S.M.C. '42-'45; *Font Staff* '45; Student Council '45.



RUTH MARY FISHER

A. B. in Sociology

Sodality '43-'45; C.S.M.C. '43-'45; Modern Language Club '44-'45; Social Peace Club '45; Poetry Club '43; F.A.A. '45; Press Club '43.



Fish

Rosemary

"FISH" — studious, witty, pompadour, purple, *Show Boat*, "Balalaika".

"ROSEMARY" — quiet charm, loyalty, May Queen, lovable, light opera, "Evening in Paris."

Scientists



GLORIA MARY JOHNSTON

B. S. in Chemistry

Legion of Mary '43-'45, President '45, Vice-President '44, Secretary '43; Sodality '42-'45; Spiritual Council '44-'45; C.S.M.C. Secretary-Treasurer '44; Phi Beta Chi '43-'45; Delta Phi '42-'45, Secretary '43; THE FONTBONNE, Art Editor '43-'45; *The Font*, Art Editor '42-'44; Press Club '43-'44; F.A.A. '45; Modern Language Club '44.



ELIZABETH MARSH REID

B. S. in Biology

Modern Language Club '44-'45, President '45; Soladity '45; Phi Beta Chi '43-'45; Home Economics Club '42; FONTBONNE Staff '42; Resident Students '42-'45; Red Cross Unit '45.

"JOHNNIE"—green-grey eyes, etchings, chemical-phys, "Our Lady of Fontbonne," wood-cuts, "Breathless".

"BETTY"—candid, football games, medical books, novels, adventure, comic drama, "Blue Carnation".



Johnnie

Betty

Scientists



JEAN MARIE HOULEHIN

B. S. in Chemistry

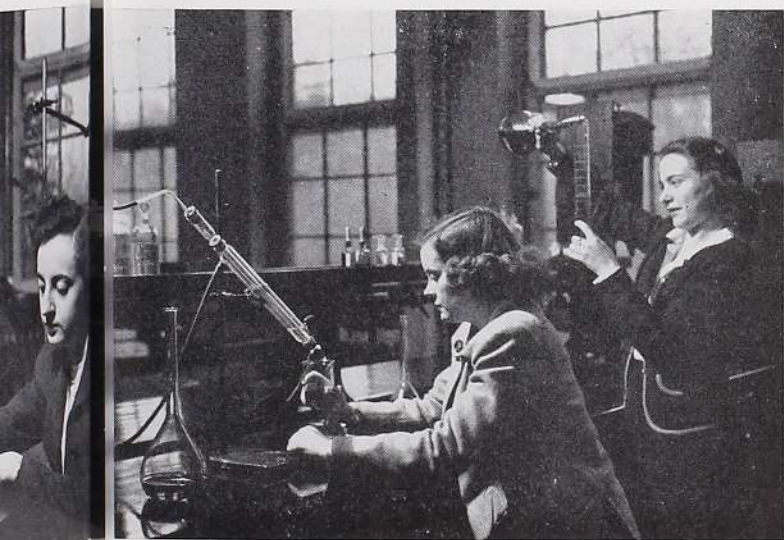
The Font, Editor '44, City Editor '43; THE FONTBONNE, Associate Editor '44; Class Secretary '45; Phi Beta Chi, Vice-President '45, Secretary '44; Press Club, Secretary-Treasurer '43; F.A.A. '42-'45; C.S.M.C. '44; Red Cross Unit '45; Daisy Chain '43-'44.



JOAN FRANCES BRANDT

B. S. in Chemistry

Student Association Treasurer '45; Student Council '45; Class Treasurer '44; Phi Beta Chi '43-'45, Secretary '45; F.A.A. '45; Sigma Beta Mu '42; Modern Language Club '44; C.S.M.C. '42; Red Cross Unit '45.



Houlie

Joan

"HOULIE"—quiet, likeable, co-operative, sincere, a trip to Hawaii, sailing, *The White Cliffs*, "Snuff".

"JOAN"—serene, Jenny Lind, tall men, *Spanish Lover*, swimming, "Shocking".

Dieticians



MARY JANE QUIRK

B. S. in Dietetics

Student Association, President '45; Faculty Student Committee '45; Class Vice-President '42, Class Secretary '44; Home Economics Club '42-'45; Daisy Chain '42; Red Cross Unit, '44-'45; Sodality '45; F.A.A. '42-'45; Phi Beta Chi '44-'45.



GENEVIEVE ANGELA WOLF

B. S. in Home Economics

Class Vice-President '45; Home Economics Club, President '45, Secretary '44, Treasurer '43; Penny Circus Candidate '43.

"MARE" — feather bob, conscientious, idealist, picnics, dusk, "Woodhue".

"PETE" — attractive, happy-go-lucky, sweaters, tailored clothes, Edgewater Beach Hotel, "Tabu".



Mare

Pete

Dieticians



ROSEMARY KENNEDY

B. S. in Dietetics

St. Teresa's College, Kansas City, Mo. '42; Phi Beta Chi '43-'45, President '45, Treasurer '44; Class Treasurer '45; Home Economics Club '43-'45; Maid to May Queen '44; Sodality '43-'45; Red Cross Unit '44-'45, Vice-Chairman '45.



ALICE MARY TOLKACZ

B. S. in Dietetics

Maryville College '42; Sodality '43-'45; Red Cross '44-'45; Phi Beta Chi '45; Home Economics Club '43-'45; Vice-President '45; Treasurer '44.



Ro

Tatie

"RO" — patrician, mountain breezes, relaxation, hats, wedding receptions, "Tropical Night".

"TATIE"—rich contralto voice, femme fatale, "Twilight Time", Peter, camellias, "Chanel No. 5".

Dieticians



MARJORIE ANNE WALKER

B. S. in Dietetics

Resident Students '42-'45, Vice-President '45, Secretary '44; Home Economics Club '42-'45; Sodality '42-'45; C.S.M.C. '42-'45; Phi Beta Chi '43; Red Cross Unit '44-'45.



ROSEJOAN KISLING

B. S. in Home Economics

THE FONTBONNE, Business Manager '45, Advertising Manager '44; *The Font*, Advertising Manager '44; Press Club, President '44; Red Cross Unit, Chairman '44-'45; Spiritual Council '45; Sodality '42-'45; Home Economics Club '42-'45; Phi Beta Chi '43-'45; F.A.A. '42-'44.

"MARGIE" — blonde hair, Allen, long walks in the woods, lying in the sun, day dreaming, "Blue Grass".

"PEE-WEE"—diminutive, zest for life, twilight, horseback riding, Hillcrest Country Club, "Shalimar".



Margie

Pee-Wee

Dieticians



EILEEN RUTH WISS

B. S. in Dietetics

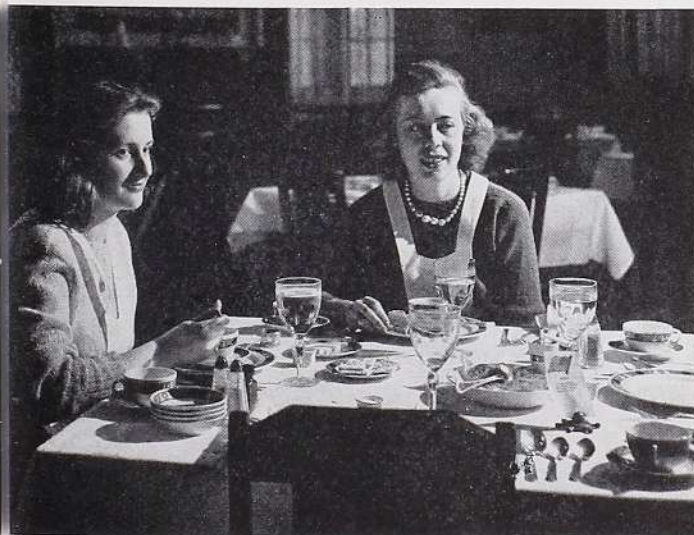
Student Association, Vice-President '45; Student Council '45; Resident Students '42-'45, Vice-President '44, Treasurer '43; Varsity Basketball '42-'45, Captain '44-'45; Home Economics Club '42-'45; Delta Phi '43-'45; Treasurer '44; F.A.A. '42-'45; Red Cross Unit '44-'45.



MARGARET ELAINE WORKMAN

Home Economics Department

Home Economics Club '44-'45; Footlights Club '45.



Whistle

Elaine

"WHISTLE"—Classic Beauty, still deep water, long shots, springtime, rain, "Miracle".

"ELAINE"—whipping up snacks, good dance bands, *The White Cliffs*, sports fan, week-end dash-about, "Reflexions".

Teachers



ELIZABETH ANN LUCAS

B. S. in Physical Education

Student Council '44; Class President '44; Class Secretary '42; Delta Phi, Treasurer '43; Footlights Club, Secretary '43; F.A.A. '42-'45; Varsity Basketball '42-'45; Varsity Hockey '42-'45; Press Club '42; *Font* Staff '42-'45; FONT-BONNE staff '42-'45; Sodality '42-'45.



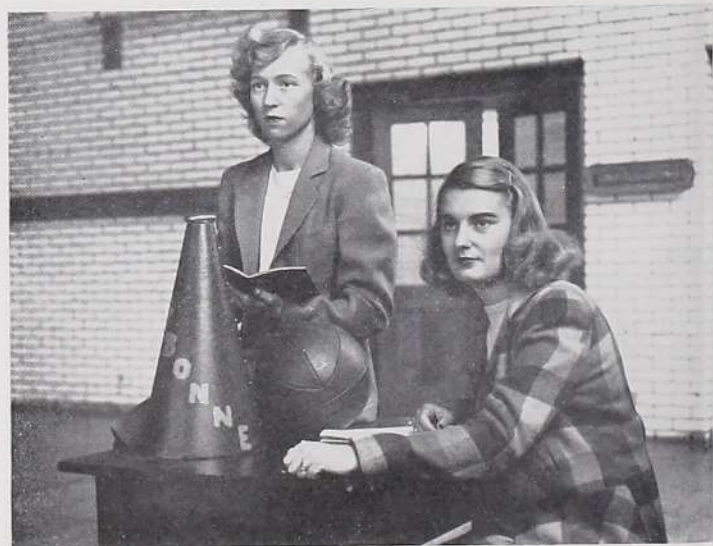
JEANNE ROSEMARY CUNNINGHAM

B. S. in Physical Education

Student Association, Secretary '45; Delta Phi, President '45; Red Cross Unit '45; Footlights Club '42-'45, Secretary '44; Sodality '42-'45; Maid to May Queen '44; *The Font*, Feature Editor '43, Fashion Editor '45; Varsity Basketball '42-'45; Varsity Hockey '42-'45; F.A.A. '42-'45.

"LIZZIE"—zip, sense of humor, initiative, "St. Luke", horse shows, "Risqué".

"JEANNE" — honey blonde, unruffled, "Claire de Lune", poetry, impressionistic dances, "Cobra".



Lizzie

Jeanne

Teachers



GERALDINE BERNICE FRANCIS

B. S. in Physical Education

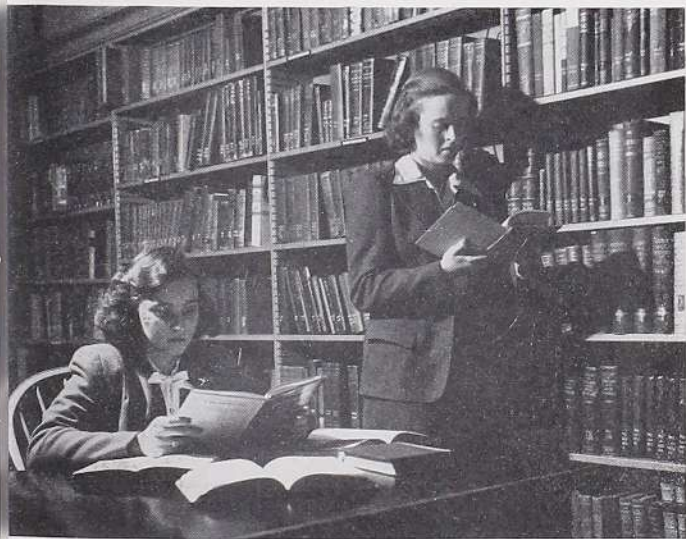
University of Illinois '43; F.A.A. '42, '44, '45, Secretary '45; Footlights Club '42; FONT-BONNE Staff '45.



MARY LUCILLE REID

A. B. in History

St. Teresa's College, Kansas City, Mo. '40; Sodality '45; C.S.M.C. '41, '44, '45, President '45; Poetry Club '41, '44, '45; Red Cross Unit '45.



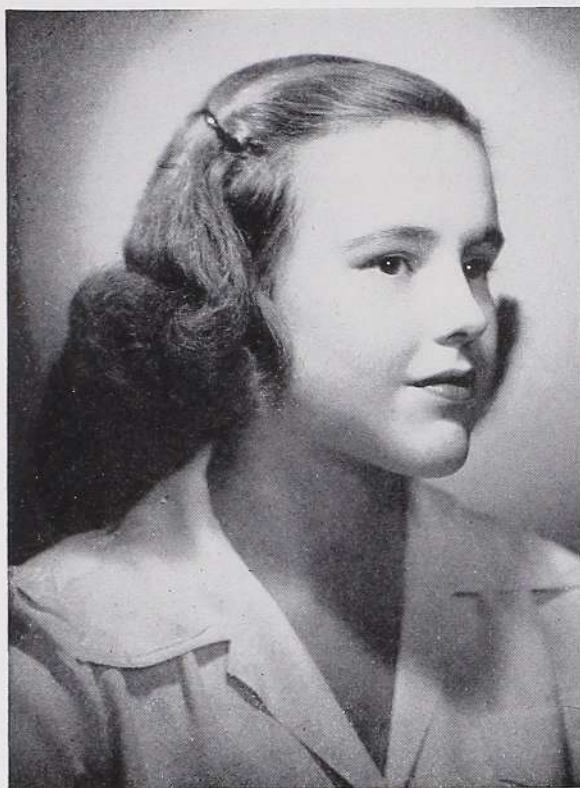
Gerry

Mary Lu

"GERRY"—photography, Sherman, luminous paint, persevering, pensive, "Indiscrete".

"MARY LU"—cameo profile, unforgettable, cultured, capable, historical research, "Tabu".

Teachers



MARY CLARE KRAMOLOWSKY

A. B. in Education

Sodality '42-'45, Vice-Prefect '45, Secretary-Treasurer '44; Maid to May Queen '43; Spiritual Council '43-'45; F.A.A. '42-'45; C.S.M.C. '42-'44; Modern Language Club '43-'45.



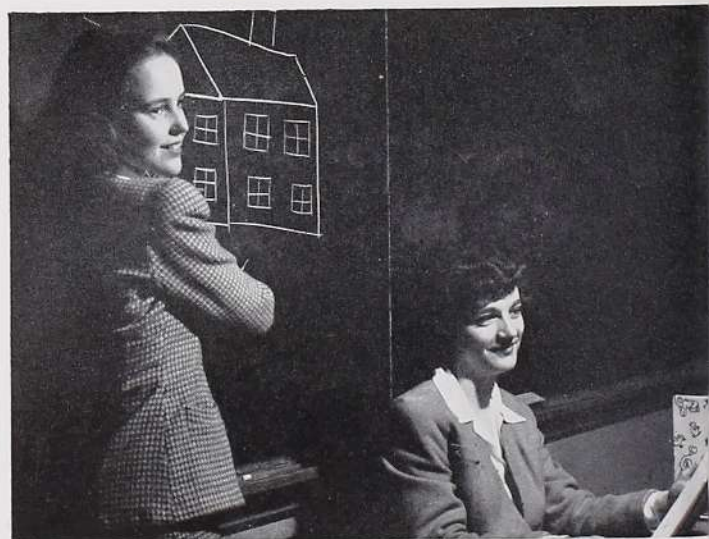
ANNE MARIE HEBBERGER

A. B. in Education

F.A.A. '42-'45, President '45, Secretary '44; Sodality '42-'45; Spiritual Council '43, '44; C.S.M.C. '42-'45; Phi Beta Chi, Treasurer '43; Glee Club '42-'45, President '44; Daisy Chain '44; Varsity Hockey Team '42-'45; Varsity Basketball '42-'45; Press Club '43; French Club '42.

"KRAM" — silver skates on ice, ready laughter, lithe figure, Sunday nights, "Straw Hat".

"ANNE MARIE"—crisp dark curls, dynamic, intelligence plus, the great outdoors, swimming, "April Violets".



Kram

Anne Marie

Teachers



MARY ELLEN BOGGIANO

A. B. in English

The Font '42-'45, Editor '45, City Editor '44; Faculty-Student Committee '45; Student Council '45; FONTBONNE Staff '42-'44; Sodality '42-'45; Daisy Chain '44; F.A.A. '42-'45; Poetry Club '43, '44; Footlights Club '42-'45; Press Club '43, '45; Red Cross Unit '45.



DOROTHY KELLY

French Department—Withdrawn

University of Missouri '42-'43; Webster College '44.



Bogg

Dot

"BOGG"—sprite, a nook and a book, Sandburg, silhouettes, chasing rainbows, "Chantilly".

"DOT"—blonde, attractive, blithe spirit, carefree, French poetry, "Danger".

Dramatic Artists



ELIZABETH ANN RAUPP

A. B. in Dramatic Art

Class President '45, Vice-President '44, Secretary '43; Press Club '42-'44, Vice-President '44; Footlights Club '42-'45; Vice-President '45; Student Faculty Committee '45; Student Council '45; Resident Students, Treasurer '44; Font Staff '42-'44; FONTBONNE Staff '42-'43; Red Cross Unit '45.



MARY KATHRYN MUELLER

A. B. in Dramatic Art

Footlights Club '42-'45, President '45; Poetry Club '42-'45, President '45; Sodality '42-'45; C.S.M.C. '42-'45; Modern Language Club '42-'44; F.A.A. '43.

"BETTY"—dimpled chin, dancing to soft music, baseball, sport suits, radio, "Blue Grass".

"MARY KAY"—efficient, gracious, acting, "Ave Maria", Denver, "Chanel No. 5".



Betty

Mary Kay

Musician



BEATRICE ANN BURKE

A. B. in Music Theory

THE FONTBONNE, Editor '45, Feature Editor '44; *Font* Staff, '42-'45, Feature Editor '44; Resident Students, President '45; Class President '42-'43; Student Council '42, '43, '45; Legion of Mary '43-'45; Maid to May Queen '42; Sigma Beta Mu '42-'45; Sodality '42, '44, '45; Glee Club '42-'45; Press Club '42, '45.

SISTER MARY ROSE CHICHIZOLA, C.P.P.S.
A. B., History

SISTER THOMAS MARIE MCMAHON, C.S.J.
A. B., History

SISTER MARY IRENAEUS MCCARVILLE, R.S.M.
B. S., Biology

SISTER MARY JULITTA MAURER, C.P.P.S.
A. B., Economics

SISTER MARY PRUDENTIANA WEINGARDT, C.P.P.S.
A. B., Art

SISTER MARY ALBERTA MAAS, O.S.U.
A. B., Economics



Bebe

"BEBE"—soft southern drawl, tapering fingers on white keys, Dodson, shrimp and lobster, heavy drama, "Sirocco".

Honors

KAPPA GAMMA PI

ROSEMARY FRANCES CASEY

ANNE MARIE HEBBERGER

GLORIA MARY JOHNSTON

MARY JANE QUIRK

DELTA EPSILON SIGMA

Delta Chapter of Liberal Arts Honor Society

BEATRICE ANN BURKE

RUTH MARY FISHER

JEAN MARIE HOULEHIN

MARY LUCILLE REID

HONORS, 1944-1945

RUTH MARY FISHER	<i>Magna Cum Laude</i>
ANNE MARIE HEBBERGER	<i>Magna Cum Laude</i>
MARY LUCILLE REID	<i>Magna Cum Laude</i>
BEATRICE BURKE	<i>Cum Laude</i>
ROSEMARY FRANCES CASEY	<i>Cum Laude</i>
JEANNE CUNNINGHAM	<i>Cum Laude</i>
ROSEMARY CATHERINE HOLDEN	<i>Cum Laude</i>
GLORIA JOHNSTON	<i>Cum Laude</i>
MARY JANE QUIRK	<i>Cum Laude</i>

Awards



Ryan Hall bust of St. Kateri Tekawitha

RECIPIENT OF ALUMNAE HOOD

*Awarded for loyalty, leadership, and service
to the all-around Fontbonne girl.*

MARY KRAMOLOWSKY

PHI BETA CHI AWARDS, 1945

ANITA KOETTING, '48
Biology

ROSEMARY DONLEY, '48
Chemistry



Juniors

President.....ROSE McNAMEE

Vice-President

MARY ANN RIORDAN

Secretary.....JEANNE BONA

Treasurer.....ROSALINE SALOME

We are the class of '46. As Juniors, of course, we pride ourselves on the experience we have gained from three years of college life. Our College Day program like our other activities profited by this experience.

Top: Mary Ann Riordan, Rose McNamee, Rosaline Salome, Jeanne Bona.

Middle: Sally Williams, Rosaline Salome, Dorothy Longinotti, Catherine Weidle, Joan Petrequin, Mary Lee Rodegast, Jane Buford.

Bottom: Ann Beasley, Gloria Walters, Marguerite Sabadell, Louise Fairchild, Marie Antoinette O'Kane, Colleen Richey.

Juniors

"Shadowpantomimes" revealed the highlights of collegiate activities. Attending the basketball games has been our favorite extra-curricular activity. Then last and most important of all the events on our '45 calendar was the annual Prom that the Juniors gave the Seniors on February 8. Swirling skirts, orchids, khaki and navy blue uniforms graced the Starlight Roof of the Chase Hotel. The turkey dinner was eaten to the accompaniment of Al Tucker's music. But one night of bliss and then back to work again. Next year will find us working for graduation and making it (we hope).



Top: Marilyn Steuterman, Betty Klinge, Lee Gleeson, Jean Alexander, Margaret Deck, Kathryn Temm, Shirley Smith.

Middle: Monica Liston, Rose McNamee, Jane Buri, Barbara Angelides, Helen Abt, Mary Ann Riordan.

Bottom: Norrine Gibbons, Jeanne Bona, June Cassidy, June Wilkerson, Dorothy Jean Robertson, Mary Jayne Murphy, Rita Johans.

Sophomores



Gloria Pfeiffer, Frances Hoffman, Frances Higgins, Dorit Burton.



Bernice Podjesk, Virginia Egger, Nancy Schatzman, Dolores Chapman, Marilyn Baumann, Ritarose Nagle, Frances Hoffman, Marie Boedges.

President.....DORIT BURTON
 Vice-President.....GLORIA PFEIFFER
 Secretary.....FRANCES HIGGINS
 Treasurer.....FRANCES HOFFMAN

With an ever-conscious eye for the humanities comprehensive in the spring the Sophomore Class has been working earnestly this year, but we have been likewise blessed in that we can still find time for the finer things of life, namely, fun. For example, look at our initiative in giving for the first time an on-the-campus-barbecue-and-tennis-courting. This party had everything from May flowers to meat.



June Dohack, Ruth Carr, Rose Dofing, Rhea Metzger, Mary Jane Delabar, Anne Kramalowsky, Gloria Pfeiffer, Betty Kiely, Dorit Burton, Catherine Hegeman.



Mary Beth Tuey, Betty Jane Haemerle, Mary Speckart, Pat Wolf. Bottom: Charlotte Fromshon, Ginny Aubuchon, Anne Dreifke, Pat Chandler.

Sophomores



Jane Crow, Pat Duerr, Jeanne Bonacci, Mary M. Carroll, Dorothy Jacobsmeyer, Margaret Springman, Marcella Igée, Gloria Longworth.



Estelle Hellman, Frances Higgins, Mary Lou Long, Rosemary Ryan, Marilyn Blattner, Margaret Shelton, Maria Castaner, Shirley Wedlock.

For the second time our candidate for Penny Circus Queen was elected. This was due to hard work and salesmanship, perhaps just a little bit, too, to the human pony we rigged up with "Vote for Marilyn Baumann." The St. Patrick's day rally (inaugurated by the

Juniors and continued by us) went over with a bang, because of the ingenuity and industry of these fine girls (that's us). An added touch of pure genius was the Barber Shop Quartet, complete even to bald heads and handle-bar mustaches.



Virginia Burns, Elise Sears, Mary Ellen Scott, Mary Joan Klutho, Vivian Gettinger, Jean Wenom, Jean Greener, Anne Miller, Mary Tuschmidt.



Robin Kendall, Ethel Hennerich, Penelope Vassely, Mary Ann Monahan, Mary Jane Brandau.

Freshmen

Top: Ruth Todd, Mary Jean Peet, Shirley Sappington, and Nancy Quirk make sure that they are at the right place.

Bottom: Betty Phelan, Pat McKay, Audrey Thaman, and Mary McCalpin wishing they were on that train instead of watching it from De Baliviere.

Top: Wistful thinking for boarders Catherine Cavanaugh, Betty Bloomfield, Terry Chandler, Marjorie Scandiff, Betty Mulherin, and Eulalia Mulherin.

Bottom: Joyce Dennehy, Rosemary May, Janet Bayliss, and Mary Jean Peet in a hungry mood in front of Garavelli's.



OFFICERS

President.....	NANCY QUIRK
Vice-President	SHIRLEY SAPPINGTON
Secretary	MARY JEAN PEET
Treasurer	RUTH TODD

Naturally the first few Freshman days were a haze of speeches, dinners, and registration. The schedule as finally devised seemed like confusion itself. We're wondering yet what the staff decided about our mentality after the half dozen intelligence tests.

Freshmen

Top: From the steps of the Old Courthouse, Annette Nahmens, Elaine Schneider, Doris McWilliams, Mary Catherine Kelly, and Rosemary Donley get a view of downtown St. Louis.

Bottom: Gloria Ganser, Nancy Byrne, Sidonia Michelson, Jean Davison, Margaret Mary Coff, and Doris Milton can well smile beside that car—with gas—parked outside of Town Hall.

Top: Father Durkin chats with Lorraine Abkemeier, Elaine Vande Walle, Anne Clemens, Grace Richard, Mary Barry and Rose Marie Storm on the steps of the New Cathedral.

Bottom: Ruth Wortman, Marjorie O'Keefe, Shirley Moegle, Marilyn Fogg, Helen Perry, and Vourdonna Fricke inspect the Soldiers' Memorial.



We insist, with evident conceit, that the freshman skit on College Day, a version of "Swinging on a Star," was pretty good. You'll

have to admit, at least, that the little verses were the right advice, even if the actors—parodies on types of college oddities—were insulted.

Freshmen

Top: Glider Pilots from Wright Field, Ohio, pose with Gladys Rabe, Mary Moore, June Bass, and Jane Nolan in front of the Chase.

Bottom: Mr. Musick of the Art Museum Staff welcomes Mary Elizabeth Petriquin, Lorraine Camper, Thelma Munkres, Georgia Vessel, Jane Sly, and Anita Koetting.

Top: Julia Ann Grogan, Marianne Uhri, Dorothy Milligan, Mary Lou Riechmann, and Mary Alice Stueber beam after a good show at the Fox.

Bottom: The doorman of the Park Plaza is right on hand to assist Theodora Holbrook, Ruth Todd, Mary Janet Oberdorfer, Dinorah Colon, and Modesta La-Plante.



December 7 has an added meaning now. It was December 7, 1944, that the Freshmen beat the Seniors in volleyball 42-38. The cake sale and raffle some time later helped the tottering treasury a bit, even though the money-

making committee rated superior in disagreements. Another gala occasion for us was our "Spring Twirl," a party given in the gym. Men, cokes, and music were the main attractions.

Freshmen

Top: The Humanities lure Gloria Vogel, Helen Holmberg, Mary Grace Kemoll, and Mary Ann Coghill to the St. Louis Public Library.

Bottom: Dolores Kelly, Nancy Quirk, Nancy Ostermeier, and Shirley Sappington say hello to the Giant Panda at the Forest Park Zoo.

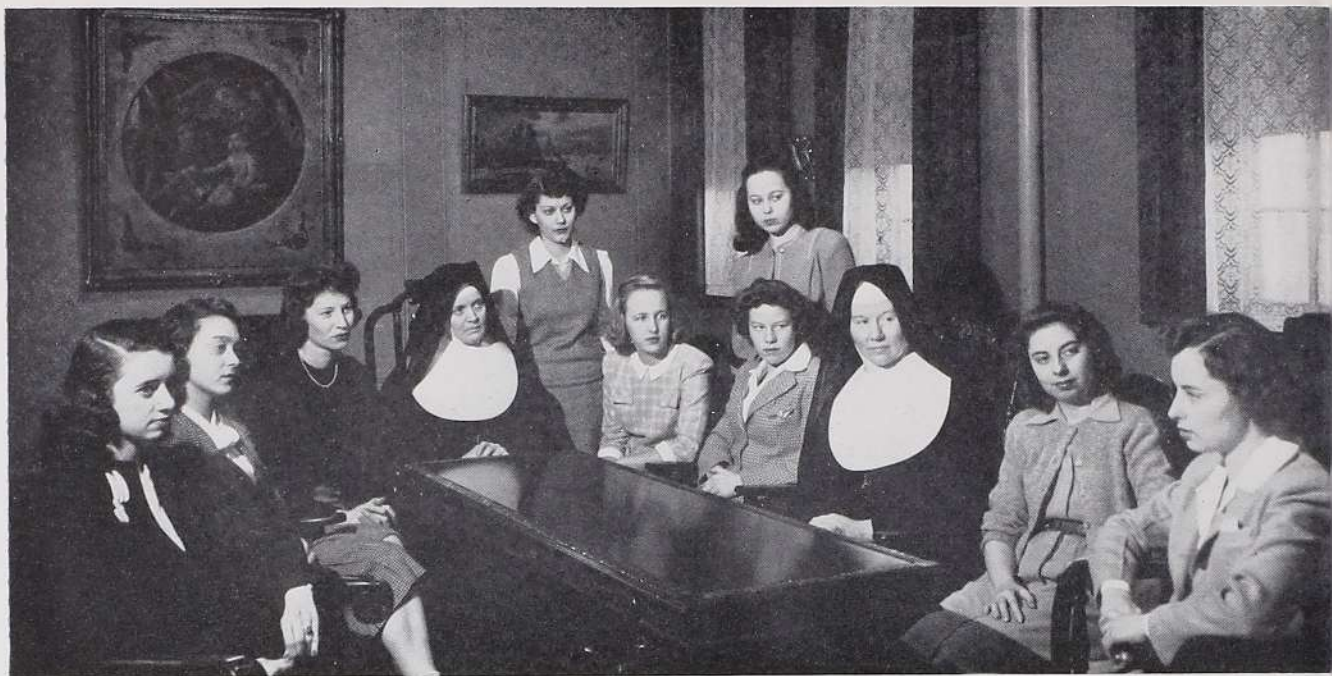
Top: Leo, the U. City Hall lion, roars obligingly for Charlotte Nash, Astrid Mansour, Margaret Landwehr, Clara Pechman, Betty Kelly, Anne Kim Weber, and Clarellen Popham.

Bottom: Marian Farrell, Jeanne Schatzman, Donna Mae Lee, Virginia Rodegast, Margie Mason, and Mary Van Sant wait patiently for the "dinky".



The decorations, even if we must say so ourselves, were ingenious. There were crepe paper streamers from the beams of the ceiling, and little paper flowers all over the walls (not to be confused with wall-flowers, of course).

A year of Fontbonne has made us wonder many things about life. For instance: *Could* the Sophomore humanities possibly be any harder than the Freshman course? We sincerely doubt it.



Left to right: M. Shelton, M. E. Boggiano, M. J. Quirk, Sister Susanne Marie, B. Raupp (standing), M. A. Coghill, F. Hoffman (standing), N. Quirk, Sister Alfred, J. Buri, J. Wilkerson.

Student-Faculty Council

FACULTY REPRESENTATIVES

SISTER SUSANNE MARIE (Chairman)
SISTER MARY ALFRED
DR. ALPHONSE CLEMENS
MRS. JOHN HARRINGTON

STUDENT REPRESENTATIVES

Seniors

MARY JANE QUIRK MARY ELLEN BOGGIANO
BETTY RAUPP

Juniors

JANE BURI JUNE WILKERSON

Sophomores

FRANCES HOFFMAN MARGARET SHELTON

Freshmen

NANCY QUIRK MARY ANN COGHILL

In order to promote better understanding and sympathy between the faculty and students, the Student-Faculty Council was inaugurated this year at Fontbonne. Its purpose is neither a means for student dictation to the faculty or vice versa, but it is to serve as a rostrum to which all difficulties and suggestions can be brought and discussed. The faculty members are appointed by the Dean, and the student members are elected, two being chosen from each class.

The ultimate goal of the Council is to stir up more enthusiasm for school activities, to cultivate a deeper interest in scholastic and extra-curricular affairs, and to stimulate the attitudes that make for real school spirit by bringing about a closer co-operation between faculty and students.



Seated, left to right: R. Kennedy, Jean Houlehin, J. Brandt, M. A. O'Kane. Standing: A. Tolkacz, R. Johans, K. Temm, M. Deck, V. Egger, B. Reid, R. Kisling, S. Smith, R. Nagle, V. Aubuchon, C. Fromshon. Standing, rear row: D. Chapman, R. Dofing, J. Cassidy, G. Pfeiffer, M. Blattner, M. J. Brandau, M. J. Quirk, M. Springman, A. Beasley, G. Johnston, J. Bona.

Phi Beta Chi

The scientists of tomorrow are the students of today. Fontbonne has its share of "will be" research workers, and Phi Beta Chi is sparing no amount of effort in order to promote and develop their interests in the natural sciences.

One of the most interesting events of the year was the Science Open House at which the display of apparatus in both the Chemistry and Biology Departments was outstanding. The girls showed remarkable ability in demonstrating and explaining the complicated instruments. A large picture of the ever-increasing Catholic Scientists was presented, and the evening was climaxed by the dedication of the Memorial to the late Sister Mary Leonila, C. S. J., Professor of Biology during Fontbonne's early days.

President ROSEMARY KENNEDY
 Vice-President JEAN HOULEHIN
 Secretary JOAN BRANDT
 Treasurer MARIE A. O'KANE



Seated, left to right: J. Houlehin, R. Kennedy, J. Brandt.
 Standing: M. O'Kane.



Left to right: C. Fromshon, M. Liston, M. Rodegast, J. Buri, B. Burke, A. Miller, M. Long, D. Robertson, J. Cassidy, B. Haemerle, N. Gibbons, N. Byrne, F. Hoffman, R. Salome, S. Sappington, J. Wilkerson, L. Fairchild, M. Boggiano, N. Schatzman.

Editor.....MARY ELLEN BOGGIANO
 Business Manager.....LOUISE FAIRCHILD
 City Editor.....JUNE WILKERSON
 Feature Editor.....ROSALINE SALOME
 Fashion Editor.....JEANNE CUNNINGHAM

The Font

Use of the lightning jargon of the newspaper world is but one of the side accomplishments of the *Font* Staff workers. Endless nights the pale blue light from the Press Room may be seen reflected across the campus—the nights on which the paper is being assembled. But their work is not in vain, for in the not-too-distant future some harassed editor will perhaps be glad that little light burned after school hours. All the intricacies of antonyms and synonyms, of word counts and of make-ups will be theirs, and he can worry just a little less that those fateful bits of copy will make the final deadline.



Left to right: J. Cunningham, L. Fairchild, M. E. Boggiano, R. Salome, J. Wilkerson.

Press Club

Buckets and mops and plates of fried chicken followed each other mysteriously into the Press Room one evening about supper time. People buzzed in and out industriously, while puzzled on-lookers guessed at the goings-on. But one, braver than the rest, ventured to stop one of the busy girls, to be rewarded with the reply that the Press Club was having a combination Clean-up Party and Dinner.

Among the Press Club's other activities of the year were a contest to solicit ads for the Yearbook, and a bridge party. The chief aim of the Press Club is to collect as much money as possible to give the College a bigger and better Yearbook and paper.



Left to right: M. Liston, J. Wilkerson, M. J. Brandau.

President JUNE WILKERSON

Vice-President JANE BRANDAU

Secretary-Treasurer MONICA LISTON



Seated, left to right: G. Johnston, L. Fairchild, R. Salome, M. E. Boggiano, E. Lucas, M. A. Wintz, M. Scandiff, B. A. Burke, N. Schatzman, M. J. Brandau, M. A. Riordan, J. Wilkerson, J. Buri, M. Liston.

Standing, left to right: M. M. Coff, G. Ganser, D. M. Lee, R. Casey, A. Miller, N. Quirk, J. Cunningham, S. Sappington, D. J. Robertson, N. Byrne, V. Fricke, G. Pfeiffer, M. Blattner, M. Spekart.

Walking the cross-kissed path that Joseph strode—

The good, the quiet, the just way of peace—

She firmly follows where his wisdom leads,

Through cool twilights, and over burning sands.

But as she struggles on, the joy of goodness grows.

She finds within her eyes a crystal tear,

A sun-glint smile upon her lips, God's glory in her heart.

Can life be hard, hills steep, or sorrow long,

For joyous hearts?

Brought To The



The Guardian of Goodness



THE REPOSITORY ON HOLY THURSDAY

*Around Christ in the Tabernacle revolves the
Spiritual life of the Catholic College Woman.*

May Court



Left to right: Frances Hoffman, Margaret Mary Coff, Mary Ann Riordan, Mary Jane Quirk, Rosejoan Kisling, Rosemary Casey (Queen), Mary Ellen Boggiano, Kathryn Temm, June Bass, Gloria Pfeiffer.

Queen

ROSEMARY CASEY

Maids

Rosejoan Kisling
Mary Ellen Boggiano
Kathryn Temm
Mary Ann Riordan
Frances Hoffman
Gloria Pfeiffer
June Bass
Margaret Mary Coff

Daisy Chain Bearers

Elizabeth Lucas
Mary Virginia Kohl
Rosemary Kennedy
Alice Tolkacz
Margaret Deck
Marguerite Sabadell
Catherine Weidle
Shirley Smith
Shirley Wedlock
Ritarose Nagle
Patricia Wolf
Mary Beth Tuey
Nancy Byrne
Charlotte Nash
Rosemary Donley
Jeanne Schatzman

Bower Bearers

Jean Houlehin
Jeanne Cunningham
June Cassidy
Mary Lee Rodegast
Marilyn Blattner
Rose Dofing
Rose Marie Storm
Betty Mulherin



Left to right: K. Temm, M. V. Kohl, R. Salome, R. Kisling, J. Buford, L. Camper, V. Aubuchon, A. Miller, R. Ryan, G. Johnston, M. Riordan, M. Kramolowsky, R. Casey, J. Burri.

Prefect.....ROSEMARY CASEY

Vice Prefect.....MARY KRAMOLOWSKY

Secretary-Treasurer.....JANE BURI

Our Lady's Sodality



Left to right: J. Buri, R. Casey, M. Kramolowsky.

"Ad Jesum per Mariam" — "To Jesus through Mary," the motto of the Sodality of Our Lady, clearly expresses its aims and purposes—to lead its members closer to the Divine Heart of Jesus through increased devotion to Mary, His Mother, the model and inspiration of the woman of tomorrow.

Spiritual bouquets for the men in service, layettes and first communion dresses for the poor, valentines and Easter eggs for orphans, Rosary devotions, First Friday adoration, retreat, and the annual Christmas party constitute the work, prayer, and play of the Sodality year.

In May, the greatest Sodality function honors Mary in a beautiful May Day ceremony in which her statue is crowned with roses and she is honored as the "Queen of Catholic Womanhood."

C. S. M. C.

Men who come back from fields afar will have the names of countless Pacific islands stamped into their consciousness—names before familiar only to the missionaries.

The names are familiar also to our Mission Crusaders whose boxes of religious articles, including rosaries, medals, crucifixes, pamphlets, etc., are being shipped to our chaplains in every war zone in the world.

It is a cheering thought that we who are so far away can perhaps bring some small comfort to those on distant battle-fronts, for letters from chaplains everywhere prove that our boxes are desperately needed.

As extra work many of the girls, by paying a small fee for instruction by mail, have "adopted" servicemen interested in Catholicism.



Left to right: J. Bona, C. Weidle, N. Schatzman.

President..... CATHERINE WEIDLE

Vice-President..... JEANNE BONA

Secretary-Treasurer..... NANCY SCHATZMAN



First row, left to right: M. Boggiano, M. Quirk, S. Sappington, N. Quirk, B. Burke, B. Podjesk, M. Wintz, R. Kisling, J. Cunningham, E. Lucas, M. Liston. Second row: R. Fisher, M. Riordan, J. Buri, J. Davison, R. Ryan, D. Lee. Third row: R. Holden, M. Kohl, R. Casey, R. Nagle, V. Egger, R. Metzger, K. Hegeman, E. Schneider. Fourth row: N. Byrne, J. Wilkerson, M. Kramolowsky, M. Sabadell, A. Hebbberger, P. Quinn, S. Mitchellson. Fifth row: G. Longworth, B. Haemerle, L. Abkemeier, G. Richard, A. Miller, M. Long, J. Bass, B. Bloomfield, B. Angelides. Sixth row: M. Mueller, M. Rodegast, J. Buford, R. Salome, M. Scandiff, G. Johnston. Standing: C. Weidle, N. Schatzman.



Left to right: V. Burns, P. Chandler, R. Salome, M. Rodegast, R. Casey, J. Buford, C. Weidle, R. Holden, V. Kohl, R. Ryan, M. Wintz, R. Schindler.

President ROSEMARY HOLDEN
 Vice-President CATHERINE WEIDLE
 Secretary-Treasurer ROSEMARY RYAN

Social Peace Club

To stimulate and guide interest in the problems which will confront us after this war is the aim of the Social Peace Club. The members discuss problems of social and economic importance, considering them from the Christian viewpoint, and present arguments for and against social measures. The post-war world will demand not only competent national and political leaders, but intelligent and co-operative citizens as well.

The Social Peace Club not only furthers interest in sociology and economics, but tries to present to the nations from Fontbonne a few more well informed and socially educated women.



Left to right: R. Ryan, R. Holden, C. Weidle.

Legion of Mary

The Legion of Mary sets before its members Mary, its Ideal and Spirit. Its purpose is to bring the world to Mary and Mary to the world. Our Lady of Fontbonne praesidium, the first college Legion established in St. Louis, has furthered this work by establishing two junior praesidia, distributing Catholic Literature, making rosaries for servicemen, working in, and visiting hospitals, caring for orphans, and by promoting school activities. It is in a spirit of devotion to her that this work is carried on, so that the new world may turn to see other Marys coming forth from Fontbonne.



Left to right, Standing: E. Vande Walle, J. M. Buford.
Seated: G. Johnston, A. Miller.

President.....	GLORIA JOHNSTON
Vice-President.....	JANE BUFORD
Secretary.....	ANN MILLER
Treasurer.....	ELAINE VANDE WALLE



Left to right: E. Vande Walle, J. Buford, M. Rodegast, C. Fromshon, V. AuBuchon, J. Bass, M. Springman, B. Burke, R. Salome, C. Weidle, J. Dennehy, T. Chandler, M. Long, Sister Rose Agnes (Spiritual Advisor), A. Miller, G. Johnston.



Left to right: E. Lucas, B. Raupp, B. Reid, M. Walker, R. Kisling, J. Cunningham, J. Houlehin, N. Schatzman, J. Brandt, E. Wiss, M. E. Boggiano, M. A. Wintz.

President.....ROSEJOAN KISLING
 Vice-President.....ROSEMARY KENNEDY
 Secretary.....NANCY SCHATZMAN
 Treasurer.....LOUISE FAIRCHILD



Left to right, Seated: R. Kennedy, R. Kisling, N. Schatzman
 Standing: L. Fairchild.

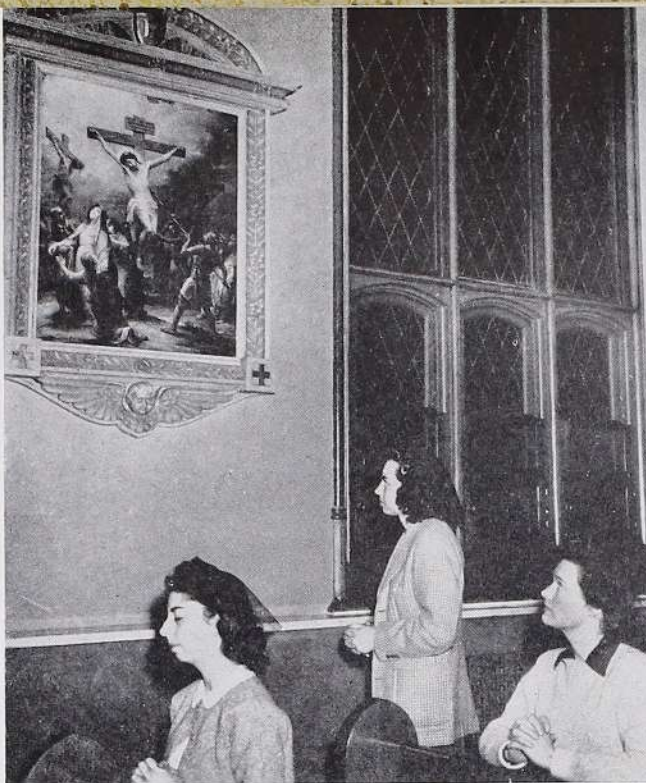
Red Cross Unit

Last year as a result of the drastic changes made by war, a new club was introduced at Fontbonne. The Red Cross has won the admiration and respect of the whole world today but in years to come will merit it still more. The American woman of tomorrow who is putting her every effort in this work today will be grateful that the boys she knew were brought help when they needed it most. Her proudest souvenir of World War II will be that Red Cross uniform, that Nurse's Aide cap, that "I Gave" button.

The Unit has sponsored two March fund drives and has sent hundreds of Christmas gifts to boys en route overseas.

Left to right:

Jane Buri, Jane Buford and
Bebe Burke pause at Twelfth
Station . . . Santa Claus at
Sodality Christmas Party . . .
Louise talks to Father Lord



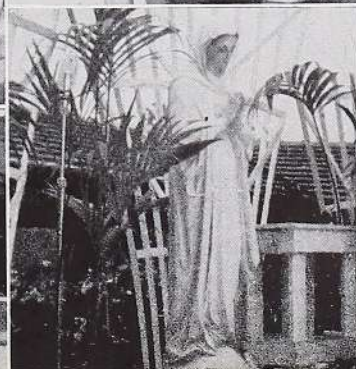
Carondelet Chapel . . . We
give.



Christmas tree, complete
to popcorn bags and stick
candy . . . Vivian, Mary Ann,
and Ginny carry one of our
many Christmas baskets . . .
Rosemary and Gloria on May
Day.



St. John's—where sociology
students do medical case work
. . . Our Queen . . . Sodality
officers strike an informal
pose.



*Enthralled by Beauty, rapt with life,
She gazes on a hundred simple things,
And finds in each the traces of an Artist's master brush;
She finds Him in the pulsing passion of unfettered song,
On a steep and sunlit path along a mountain top,
In the strong swift grace of birds in flight.*

*Questing, she roams the cool cloisters of Poetry, the halls of Art
But finds Him mirrored fairest in a Maiden's sinless eyes.*

Awakened To The



Courtesy St. Louis City Art Museum

he Love of Beauty



The Glee Club in Carolers' Capes on the Steps of Ryan Hall.

President MARY LEE RODEGAST

Secretary-Treasurer ROSEMARY CASEY

Glee Club

Culture in milady's every word is the result of many things, but the arts take first place, and Sister Madeleine Sophie's College Glee Club takes to good music as Golschmann to a baton. The syncopated downbeats of "Joshua Fit de Battle ob Jericho" and "Listen to the Lambs" resounded in a pleasing new harmony from the throats of this year's lyricists.

Thirty-two members graced the Club's ranks, first appearing in the annual College Day Mass. December 10 saw a Sacred Recital of Christmas music in the Chapel, a newly inaugurated program which was so successful that it doubtlessly will become a tradition.

May 12 the annual program of Catholic Church music on Station WEW was given and May 21 culminated the Club's activities in one grand and glorious resume of the year's accomplishment, a delightful Spring Recital.



R. Casey, M. L. Rodegast.



Seated, left to right: M. V. Kohl, A. Dreifke. First row: A. Weber, M. L. Long, J. A. Bonacci, M. Carroll, L. Camper, M. B. Tuey, A. Miller, P. Duerr, G. Vessell, A. M. Clemens, R. Nagle, C. Weidle. Second row: T. Holbrook, M. Petrequin, B. Burke.

Sigma Beta Mu

With an aim of better appreciation of the music masters and the encouragement of creative ideas, Sigma Beta Mu presents varied programs to its members. Its meetings feature recordings of great composers and conductors, current or modern successes, and performances by the members themselves. Highlights of the year included a critical study of Tschaiikowsky's ever-beloved Fifth Symphony and the appearance of several guest singers.

In music for a little while one can be lifted from the petty worries of everyday life to the realm of pure art. The love thus developed for finer things is merely a part of Fontbonne's primary purpose—to produce the best possible woman for a better world tomorrow.

<i>President</i>	MARY VIRGINIA KOHL
<i>Vice-President</i>	ANNE DREIFKE
<i>Secretary</i>	LORRAINE CAMPER
<i>Treasurer</i>	ANNE MILLER



Left to right: L. Camper, M. V. Kohl, A. Miller.



Seated, left to right: M. Deck, E. Hellman, G. Johnston, K. Temm, J. Cunningham, G. Pfeiffer, M. J. Brandau, M. Blattner, V. Egger, R. Nagle. Standing: D. Milton, J. Klutho, M. J. Murphy, A. M. Hebbenger, R. Schindler, M. Speckart.

President JEANNE CUNNINGHAM
 Secretary KATHRYN TEMM
 Treasurer GLORIA PFEIFFER



Left to right: K. Temm, J. Cunningham, G. Pfeiffer.

Delta Phi

Painters, architects, designers, interior decorators, all these and more artistic talents, too, are embodied in our Delta Phi. This club proposes to increase the "art consciousness" of the students, to promote fellowship among them through an interest in art, and to teach them appreciation of the standards of beauty in art so that no matter if future trends are super-, sub-, or surrealistic Delta Phi-ers will evaluate them all correctly.

To put their talents to a patriotic use the members made clever bookmarks for veterans of World Wars I and II. A Cushion Party, a Bohemian supper, and a Christmas puppet show are a few of the other unusual affairs Delta Phi has sponsored.

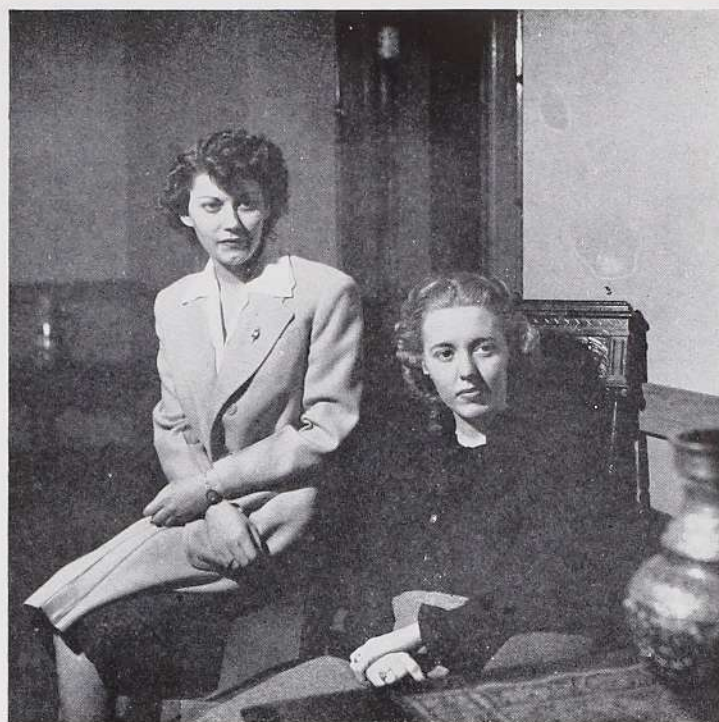
Footlights Club

Setting: *The stage of Fontbonne's Little Theater is well-lighted and crowded with members of the Dramatic Club. The curtains part, and Mary Kay steps forth to address the audience.*

Prologue: Here you see before you the cast of this year's Footlights Club production, *Tovarich*, and the loyal boosters of the annual War Bond Drive which is going to buy the bomber *Fontbonne* for us.

In our aim of developing theatrical art we have produced such plays in past years as *Jane Eyre*, *Dulcy*, and *She Stoops to Conquer*. Victory and peace will reflect our other aim—over \$65,000 for the past two years' bonds.

Mary Kay withdraws. The house-lights dim, and revealing the threshold of tomorrow the curtains part.



B. Raupp, M. K. Mueller.

Producer.....BELLE MARIE MULLINS
 Director.....MARY KAY MUELLER
 Assistant Director.....BETTY RAUPP
 Manuscript by.....MARY ADELE WINTZ
 Director of Finance.....MARILYN STEUTERMAN



Seated (on stage), left to right: H. Holmberg, R. Holden, E. Workman, B. Raupp, M. Van Sant, J. Wilkerson. Standing: A. Mansour, A. Weber, D. Lee, A. Kramolowsky, M. Coff, M. Wintz, R. M. Storm, E. Lucas, H. Friedman, M. Boggiano, M. Mueller, J. Houlehin, N. Quirk, S. Sappington, M. Coghill, J. Cunningham, E. Sears, N. Schatzman, N. Byrne, J. Davison, J. Klutho, F. Hoffman.



Standing: M. L. Reid. First row, left to right: J. Buford, R. Metzger, K. Hegeman, J. Crow, C. Weidle, R. Salome, B. Angelides. Second row, left to right: M. Liston, M. K. Miller, M. E. Boggiano, G. Longworth, F. Hoffman, R. Ryan.

President..... MARY LU REID
 Vice-President..... MARY KAY MUELLER
 Secretary-Treasurer..... COLLEEN RICHEY



Colleen Richey, Mary Kay Mueller.

Poetry Club

*We looked for artistry
 And found it on the pens
 Of countless Catholic poets.
 We scanned the lines for loveliness
 And found that it was there.*

Beauty may be only skin deep, but our verse critics are too analytical to be deceived by any surface value. They've delved into the depths of poetry and studied such representative writers as Alice Meynell, Joyce Kilmer and Gerard Manley Hopkins, S. J., during the past year.

One of the most beneficial aspects of their study has been a growing familiarity with Catholic writers and a more thorough appreciation of the thought in Catholic poetry. Of even more worthwhile value, however, have been the ideals derived from this publicized Catholic philosophy.

Modern Language Club

The time is now—the time when we must know more than merely the languages of other countries. Foreign customs and contributions must be appreciated by the women whose work tomorrow will take them into foreign fields. The Modern Language Club is giving its members the modern concept of French, Spanish and German culture, and bringing to the students a better understanding of these people.

At a typical meeting Kim Weber sang a French aria, our Puerto Rican girls, Maria Castaner, Dinorah Colon, and Rayda Perez did Spanish dances, and Pat Duerr read a representative German poem.



Left to right: M. Sabadell, B. Reid, J. M. Buford.

President BETTY REID
Vice-President JANE BUFORD
Secretary-Treasurer MARGUERITE SABADELL



Seated, left to right: B. Reid, J. Buford, J. Bonacci, G. Ganser, A. Miller, C. Fromshon, M. Long, J. Davison, P. Duerr, R. Storm, N. Byrne, S. Williams. Standing, first row: C. Weidle, M. Liston, M. Kramolowsky, R. Holden, D. Colon, M. Castaner, D. Lee, V. Egger, R. Todd, C. Popham, A. Weber, V. AuBuchon, C. Nash, M. Landwehr, M. Coghill, A. Clemens, R. Nagle, V. Fricke, J. Klutho, A. Kramolowsky. Second row: T. Chandler, P. Chandler, B. Mulherin, R. Perez, M. Mason, N. Quirk, S. Sappington, L. Camper, R. Fisher, R. Salome, M. Riordan, J. Buri, F. Hoffman.

We Find



In a melody . . .

Jeanne accompanies Annette as she bows a difficult passage while Mickey counts measures and looks on.

In the languages of other lands . . .

Dinorah, Rayda, and Maria look over the French and German books in the library but smile especially on the Spanish.



In the lines of a play . . .

Betty dramatizes while Marilyn, Mary Ann, and Mary Kay enjoy the script.



In the thought of a poem . . .

Colleen, Fran, and Rhea search for lines to match a mood.



Beauty

In life sketches . . .

Margaret, Jeanne, Katy, and Louise at their easels catch the likeness of Gina (I'm-not-moving-a-muscle) Rodegast.



In singing . . .

Sister Madeleine Sophie directs the Glee Club rehearsing for the May Radio Concert.



First row, left to right: M. E. Petrequin, E. Mulherin, R. Nagle, A. K. Weber. Second Row: P. Duerr, T. Chandler, M. Van Sant, G. Vessell. Third Row: D. Colon, M. O'Kane, J. Bayliss, A. M. Clemens. Standing: C. Weidle, M. Riordan, J. Davison, R. Salome, J. Buri, B. Mulherin, A. Hebbenger, J. Petrequin, M. L. Rodegast. At piano: B. Burke.

*Sword of the spirit sheathed in carnal might,
A steadfast soul within a sturdy frame,
She kneels in humble love to Strength Incarnate.*

*As power surges from the source of Life to her
Igniting in her heart the burning joy of love,
She scans the stony crags that silhouette
Her life's horizon, and still undaunted, lifts
Her tear-starred cross—the happy burden of her myriad tomorrows.*

Enrapt In The S



OWS.

The Source of Strength

F. A. A.



Margaret, Rodie, and Estelle in action.

The fragile, wasp-waisted female who graced the lounges of the 19th century has been replaced by the sturdy, vibrant lass of today and tomorrow. Tennis, basketball, volleyball, hockey and skating are her sure guarantees to rosy cheeks and limber muscles.

Realizing this, the members of the Fontbonne Athletic Association went all out with pep and vigor to gather in a motley crew from artists to scientists with the purpose of stimulating co-operation and increasing school spirit.

The Penny Circus in October started the year off with a real bang. Never before was the gym so gaily decorated, the crowd so genuinely excited, and the profits so outstandingly large. The Class of '47 proved to be the Royal Class once again. Marilyn Baumann, Sophomore candidate, was chosen and

Kneeling, left to right: J. Buri, G. Longworth, R. Kisling, M. Delabar, M. Liston, M. Sabadell, A. Heberger, J. Wenom, P. Chandler, M. Brandau, A. Kramolowsky, E. Wiss, S. Williams. Standing: M. Riordan, M. Shelton, E. Hellman, J. Cunningham, J. Houlehin, B. Kiely, R. Metzger, G. Johnston, R. Casey, V. AuBuchon, M. Quirk, M. Tuey, A. Miller, M. Igoe, M. Boggiano, V. Egger, F. Higgins, V. Gettinger, V. Burns, S. Wedlock, J. Bonacci, M. Rodegast, R. Nagle, M. Spekart, G. Pfeiffer, B. Haemerle.



A.

le who
century
vibrant
ennis,
d skat-
cheeks

of the
ent all
er in a
entists
o-pe-
t.

started
Never
orated,
nd the
The
Royal
mann,
n and



New members of the F. A. A.

crowned Penny Circus Queen. The event was such a huge success that the Athletic Association decided to use its surplus funds to buy new tunics for the Varsity Basketball team.

Winter came with its ice and snow, and our hearty athletes took to the outdoors. Ice-skating parties, wiener roasts, and treasure hunts were the chief activities of the members. The inner-class volley-ball tournament was next on the calendar of sports. Amazingly enough the Freshmen emerged victorious: 42-38 against the Seniors.

The basketball season arrived in 1945. As soon as the first varsity practice was called, the cheer leaders went into action, and pep rallies started the ball rolling. The F. A. A. points with pride to cheerleaders par excellence Estelle Hellman, Margaret Shelton and Mary Lee Rodegast. Roller skating parties, the inter-class basketball games, and the tennis tournament rounded out the calendar of sports for the year.

President.....ANNE MARIE HEBBERGER
Vice-President.....MARGUERITE SABADELL
Secretary.....GERRY FRANCIS
Treasurer.....JEAN WENOM



Seated, left to right: G. Francis, A. M. Hebberger, M. Sabadell.
Standing: J. Wenom.

Yea



Murphy struggles for the ball while Wiss catches her breath.



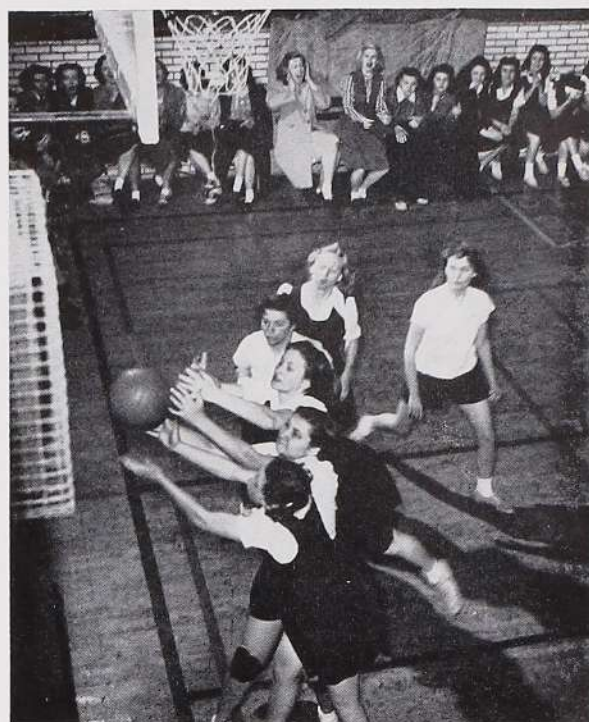
Haemerle and Hebberger rush an opponent in a desperate attempt to regain the ball.



The crowd gasps as Lizzie knocks the ball sky-high.

Team!

Elaine and Maggie on the sidelines nearly die when the ball goes out of bounds right underneath the basket.



First row, left to right: Helen Holmberg, Margaret Mary Coff, Mary Jayne Murphy, Eileen Wiss (Captain), Mary Lou Long, Elizabeth Lucas. Second row: Marianne Uhri, Marcella Igoe, Mary Speckart, Anne Marie Hebbberger, Betty Jane Haemerle, Jeanne Cunningham.

Student Council

The Student Council of the Student Association under the moderating power of the Dean of the College is the legislative body of the school.

The Council has advisory supervision of student conduct, and during the weekly meetings transacts all the business of the Association.

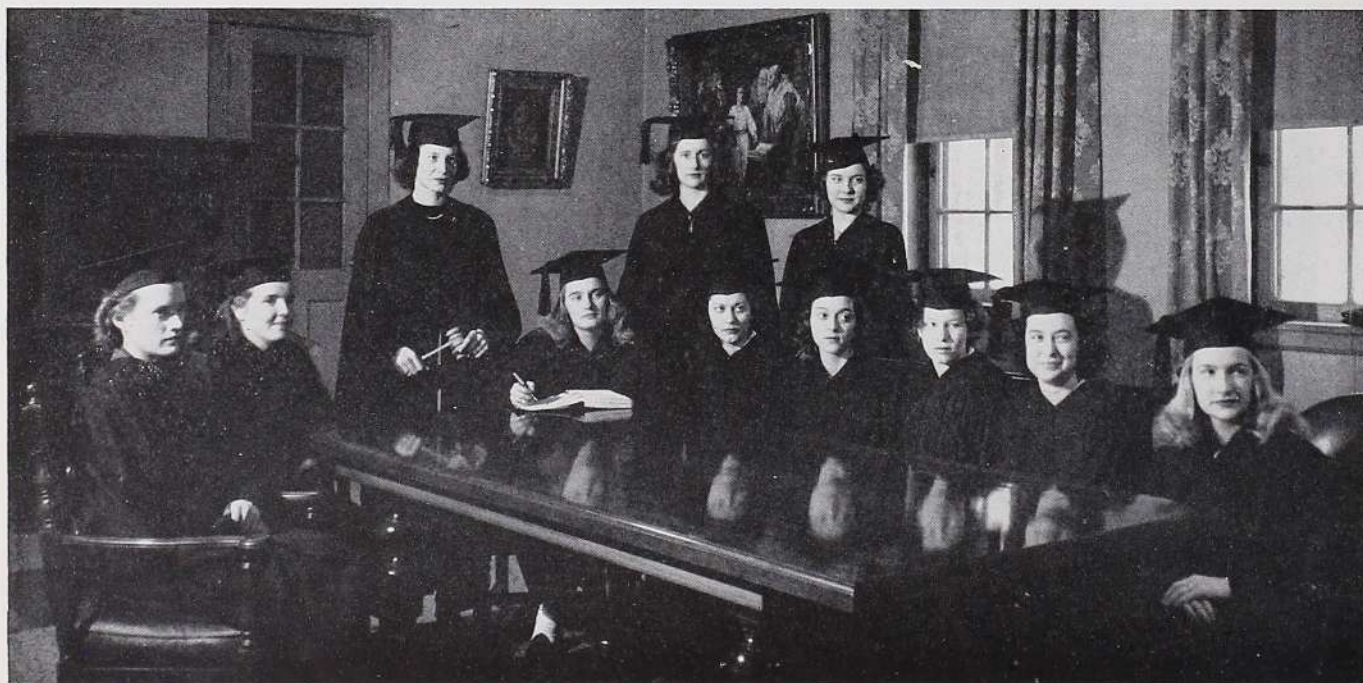
This year the Student Council undertook the complete revision of the Constitution and By-Laws of the Association and made out a system of demerits for the enforcement of rules of Student Government.

All charges of misconduct are to be investigated, the members in question, summoned, an opportunity given them to justify themselves, and either an honorable dismissal from hearing given them or steps taken to correct the situation.



Standing, left to right: J. Cunningham, J. Brandt, E. Wiss.
Seated: M. J. Quirk.

President	MARY JANE QUIRK
Vice-President	EILEEN WISS
Secretary	JEANNE CUNNINGHAM
Treasurer	JOAN BRANDT



Standing, left to right: M. J. Quirk, E. Wiss, Joan Brandt. Seated: B. Burke, R. McNamee, J. Cunningham, B. Raupp, M. E. Boggiano, N. Quirk, R. Casey, D. Burton.



Seated, left to right: M. L. Rodegast, B. Burke, M. Walker.
Standing: R. Salome.

President..... BEATRICE BURKE
Vice-President..... MARJORIE WALKER
Secretary..... MARY LEE RODEGAST
Treasurer..... ROSALINE SALOME

Resident Students' Association

Only by living with people can one come really to appreciate and understand human behavior in all its quirks and peculiarities. It is this ideal that makes the life of the resident students not only enjoyable but enviable. The R. S. A. is the official arm of the boarders and represents their voice in campus activities. With reference to the "enviable" life mentioned above, there is the party for nearby service men given in the fall, frequent blanket parties, back-campus wiener roasts, and other private affairs which it is not deemed wise to mention. Truly, the boarders have a big chance at something which everyone does not have—the opportunity of living with many in order to cultivate the attributes which make for happiness in living with few.



First row, left to right: K. Cavanaugh, G. Johnston. Second row: M. Castaner, B. Mulherin, M. Van Sant, M. Rodegast, M. Walker, B. Burke, R. Salome, M. Landwehr, C. Nash, A. Weber. Third row: P. Duerr, J. Buford, L. Camper, C. Fromshon, G. Vessell, J. Bass, M. Scandiff, R. Perez, T. Chandler, M. Petrequin, M. La Plante, B. Bloomfield, R. Todd. Fourth row: C. Weidle, J. Petrequin, J. Dennehy, M. Tuey, L. Fairchild, E. Wiss, E. Workman, C. Popham, D. Longinotti, M. Mason, J. Oberdorfer. Fifth row: S. Wedlock, P. Chandler, A. Clemens, E. Mulherin, E. Vande Walle, T. Holbrook, D. Colon, B. Reid, B. Raupp, S. Williams, M. Springman, A. Koetting, V. AuBuchon, R. Schindler, M. Peet, J. Bonacci, A. Mansour.



Left to right: R. Nagle, G. Wolf, E. Hennerich.

President	GENEVIEVE WOLF
Vice-President	ALICE TOLKACZ
Secretary	ETHEL HENNERICH
Treasurer	RITAROSE NAGLE

Home Economics Club

The Home Economics Club at Fontbonne furthers interest in all phases of Home Economics, Dietetics, Interior Decoration, Costume Design, and Clothing and enriches its members by enabling them to obtain a well-rounded knowledge of the entire field.

Since the home is the strength of the nation the future of America lies in the hands of the wives and mothers of tomorrow. An excellent means of beginning to fit Fontbonne women for that role is the Home Economics Club. It has succeeded in combining work, entertainment, and responsibility in such a way as to give each girl an extra bit of confidence in herself and her home-making abilities.



In alcove, left to right: R. Nagle, E. Hennerich, G. Wolf, A. Tolkacz. Seated on floor: M. J. Quirk, R. Kennedy, R. Kislng, E. Hellman. Seated on couch: A. Mansour, J. A. Bonacci, E. Wiss, E. Workman, V. Egger, H. Perry. Seated in back of couch: V. Aubuchon, M. Farrell, D. Jacobmeyer, A. Kramolowsky, E. Vande Walle, S. Moegle. Standing: M. Walker, M. Shelton, M. J. Brandau, G. Pfeiffer, M. Blattner, M. O'Keefe, J. Bass, M. Boedges, B. Klinge, M. Deck. Standing, last row: R. Johans, M. A. O'Kane, D. Chapman, R. Dofing, S. Smith, K. Temm.

Left to right:

Sally, Charlie Burke, Henry Zak, and Charlotte play a fast bridge game at Boarders' party.



Marilyn Blattner pays . . . Pete, Rosemary, Mary Jane, Eileen, Pee Wee, Sr. Rose Genevieve, and Miss Carmody on a field trip at Curtiss-Wright.

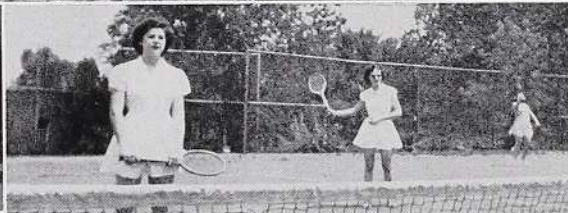


Johnnie poses with that photometer again . . . Gibby, Betty Ann, and Sap with Boss.



Sophs enjoy After-Father-Daughter-Banquet Party . . . So that's where that mail's been, Sap and Gibby! . . . Lost something, June?





Left to right: "Don't fence me in," Rodie and Maria . . . Boarders' Backyard Barbecue . . . Indian camp or horse show? . . . End of the trail for Tatie and Pee Wee . . . Loafers sprawl on the green . . . More feet than anything else . . . How long is that tennis court? . . . Maggie, Kim, and Astrid didn't duck quite in time . . . Motor-boating in the Lagoon . . . Fran, Ginny, Rita, and Rosemary intent on something . . . It looks like Rodie and Elaine ice-skating.

The Year in Review

High grass and remnants of suntans greeted students, old and new, as they strode energetically onto the campus for registration in September. The halls shone with new wax, and

books looked fresh and enticing. But all too soon was the shine to wear off and the delicious novelty to lose its savor, to abdicate in favor of stubby pencils and assignment sheets posted in

the library.

October marked the real beginning of the school year. Such traditions as the College Day, the Faculty Tea, and the Penny Circus saw their rebirth in the hearts of all. The Sophomore class scored again as these girls put the crown of "Penny Circus Queen" on the head of their candidate for the second time. It was in this month that the Freshmen began to feel the real weight of the Humanities, with mid-semester only weeks off.

November came gnawing its way into our hearts with its usual biting wind. The only mitigation from our cares came with Homecoming and the Thanksgiving holidays—with an extra one thrown in for good measure. Turkeys were scarce this year, with the result that many of us had to forfeit our annual feast in favor of some viand of less sought-after nature.

December was the month of months—last-minute assignments conflicting sorely with the

long anticipated vacation. Most conspicuous items on campus were the trunks spread all over Fine Arts, and railroad tickets waved triumphantly in the air. The Christmas spirit was in the air just when the Sodality gave its rip-roaring party in the caf, complete to a real live Santa Claus (even if he did sport an Irish brogue).

With feelings halfway between hilarity and chagrin the students of Fontbonne trudged their weary way back to classes on January 4. The first was soon doomed by the appearance of semester exams, but the low spirits were somewhat lifted by the inauguration by the Senior class of Key Day. This event marked the beginning of a new tradition such as binds Fontbonne to the hearts of its students. The month ended with a hallowed atmosphere prevailing on the campus, as the result of the annual retreat.

Along with combined early spring weather

Left to right: Sophomores crown another queen—Marilyn Baumann this time . . . Freshmen rooting for Sophomore candidate? . . . I wonder what they're doing . . . More stuff for Baumann . . . Little girl awed by Buri's occult powers . . . Crowned at last!





Left to right: The sister teams . . . Anne and Mary Kramolowsky . . . Bebe and Peggy Burke . . . Pat and Pete Wolf . . . Jeanne and Nancy Schatzman . . . Terry and Pat Chandler . . . Nancy and Mary Jane Quirk . . . Betty and Jean Houlehin . . . Mary Lee and Gina Rodegast . . . Mary Lou and Betty Reid . . . Joan and Mickey Petrequin.

and mid-winter ice came February. The big feature of the month was the Junior Prom, held this year at the Starlight Roof. The boarders were in luck the next day, for they

could go to bed between classes, but the poor day students had to bear up till the end of the day. The Great Triumph of the year came with our second basketball game of the season—Font-

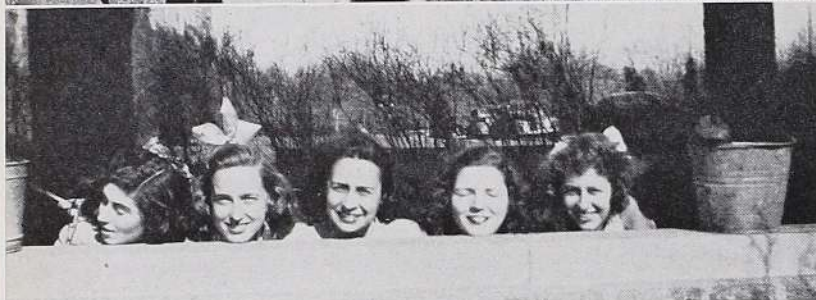
bonne—20, Webster—16!

"Beware the Ides of March" had great significance this year, for mid-semester exams began on that date, and Liz Lucas' thesis was given on

that night. The student body had been properly primed for both events during the preceding weeks, dark-circled eyes for one and bruised legs for the other. The Easter bunny's powder-

Left to right: Johnnie, Rodie, and Bebe have a present for someone . . . Jane takes her place on the platform to advertise our wares . . . Margie and Eileen awaiting tea guests . . . The Freshmen don't think exams are such a good idea . . . The pause that refreshes . . . Juniors don caps 'n' gowns for first time this year . . . What's this line—streetcar, cigarettes, or movie? . . . Sister Rose Genevieve and Sister Helen Joseph ride again! . . . Old Faithful.





Left to right: Boarders line up . . . Mac and Murph adopt little Clemens . . . Sorority initiation invades campus . . . Sophs poised for the take-off . . . Maggie and Kim enjoying a stroll . . . What do you see, Casey and Heberger? . . . Jane displays to Rosie "Luke," outcast of the Bio lab . . . Jane, Ginny, Fran, and Vivian being patriotic . . . Rita, all by herself . . . Burke in the bulrushes . . . Mary Ann lost her watch.

puff came close to freezing off, he had to come so early. In fact, the snow had melted such a short time before that one could almost see his tracks.

"April showers *may* bring May flowers and they may not," is a true description of that uncertain month. No less frequent than weather

changes were the theses given in this month. Betty Raupp and Mary Kay Mueller put their heads together to give a roof-bringing-down performance. Gerry Francis showed us how

physical education grew up and Jeanne Cunningham in the same department presented us with impressionistic dancing. The Freshmen kept the ball rolling too and gave their Spring

* Left to right: Monica, Bebe, Johnnie, and Rosie take time out from work, to pose... Betty, Studie, and Mary Kay read over the script... Murph assumes her new duties... Music students entertain Cpl. Etienne Girard Bauer after his performance... Sidonia sits... Freshmen wait in arcade... Elaine and Lorraine on cleaned-off steps... Peggy grins appreciatively... Pat and Jeanne Ann enjoy spring by the fish-pond... Longinotti likes us... Go on up, Byrne and Sap... Wilk and J. B. sun themselves... How about a lift, Haemerle?





Left to right: An interesting art specimen . . . Anne and Bassie discover new germs . . . Fall—it looks as if they didn't have a thing to do . . . Frosh go on spree . . . Bobbie and "M. G." look at the birdie . . . "I now pronounce you——" . . . Mrs. Doyne-Neal accompanies Cpl. Bauer . . . Glo and Janie fancy pigtails.

Twirl in the gym. There were fun and laughs for all. "Boots and Saddles" made for smiles (as well as frowns) and a gay spirit of Fontbonne with the big event of the spring, the

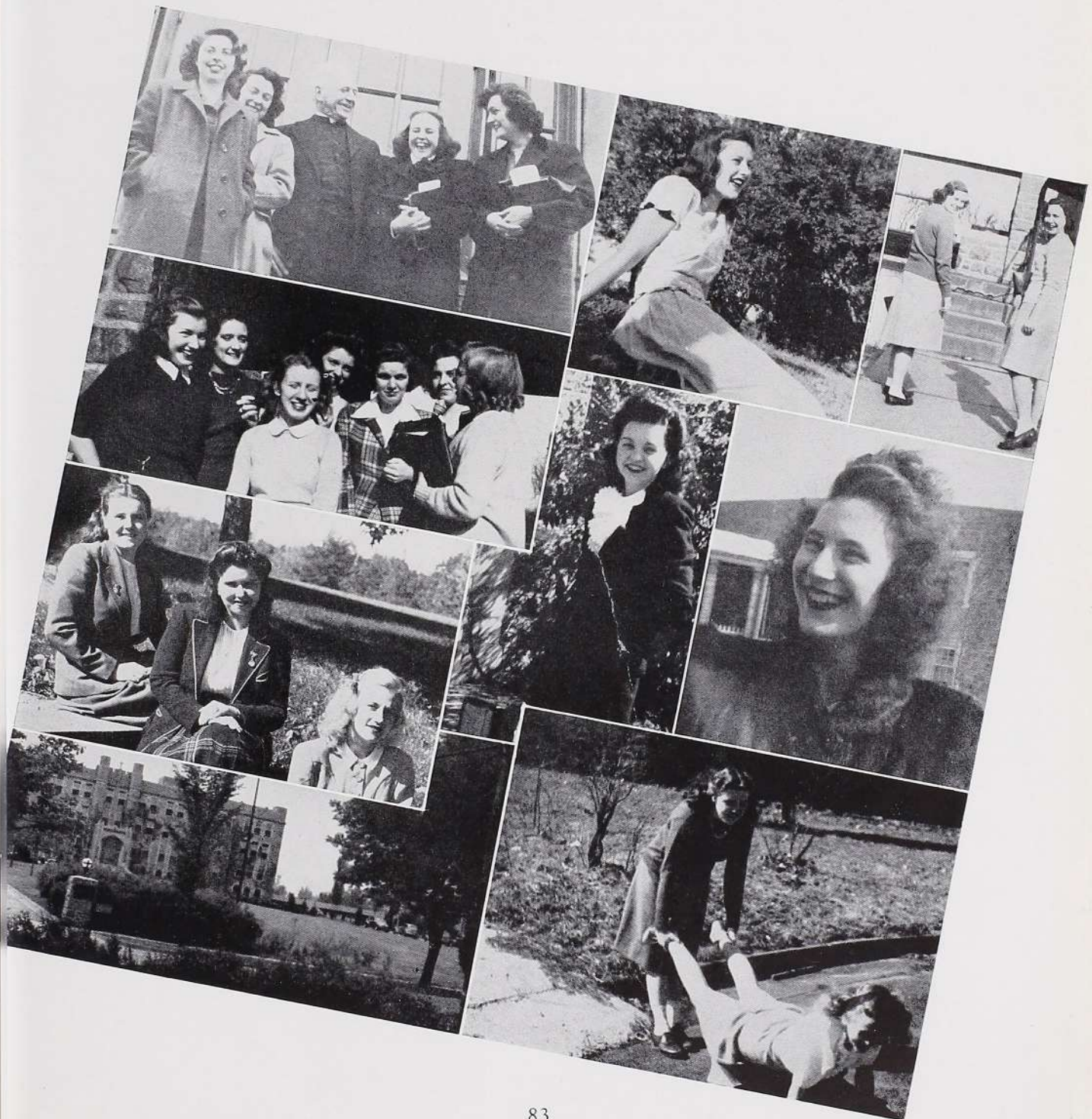
Horse Show, at the Missouri Stables.

May, the month of Mary, of heavenly blue morning glories, and of spring fever, descended in all its luxurious freshness on Fontbonne.

Picnics, and entertainment for the Seniors were foremost. May Day was serene and beautiful as always. Girls in cap and gown and in spring colors honored Our Lady of Fontbonne by

crowning her Queen of May. The Alumnae Breakfast brought back old faces and loving hearts to Alma Mater. Then came the tense day that the 1944-'45 edition of THE FONT-

Left to right: Time to leave, Father... Shirley in one of her more glamorous moments... Jean and Joan after a full meal in the caf... Center of attraction, Mary?... Where are you going, Joyce?... Charlotte, with that wind-swept look... Mac, Mary Ann, and Jean form steps... Alma Mater... D. J. being Mac's wheel-barrow.



BONNE was at last here. First loud exclamations, then the pause of silence, and finally the exchanging of signatures, all of which make up days to be remembered always.

June was brief, but memorable. Bebe Burke presented her senior piano recital which gave a sunny atmosphere after the drudgery of final exams. The fervor concomitant with the ap-

Left to right: Junior hen fest . . . Catherine adorning fence . . . Wenom, Metzger, and Long being eager beavers . . . "I can work you under the table any old day" . . . Ready for a long trip, as aren't we all . . . Tramping in the snow . . . Hot off the press! Glo, Tillie, Pat, and Janie . . . Monica and Barbara go home . . . Imitating Romeo, Jane? And wherefore, Mary . . . Terry from Tulsa . . . Nancy and Louise in the Press Room . . . Mr. DeZutter and Miss Willis hold a consultation.



Burke
gave a
of final
the ap-



Left to right: The bowery, the bowery . . . Big test on for Sally and Jane . . . Check your coats, please . . . That old gang of mine . . . Mickey, Anita, and Joan—but where is Georgia? . . . Betty and Louise off to class . . . My, how times have changed! . . . Mary smiles to those below . . . Those last few minutes before Religion . . . "Bogg" gets Dick Powell's autograph . . . Rosie and Jane are coy . . . Ruth and Elaine—headin' for the last round-up.

proaching graduation mounted until all had caught the spirit of the season. The usual gaiety was somewhat dampened by an occasional tear for those who would never see such a spring

at Fontbonne. But tears were soon dried when the end came, and triumphant smiles gleamed on the faces of the newest members of the alumnae.

EDITORIAL STAFF

BEATRICE BURKE
Editor-in-Chief

ROSALINE SALOME
Feature Editor

MONICA LISTON
Photo Editor

ROSEJOAN KISLING
Business Manager

JANE BURI
Advertising Manager

GLORIA JOHNSTON
Art and Make-up Editor



Left to right: R. Kisling, B. Burke, R. Salome, M. Liston, J. Buri

The Fontbonne

After hectic days and sleepless nights, the Yearbook finally went to press.

"If you can keep your head when those about you are losing theirs and blaming it on you" . . . you'd be completely out of place on the Yearbook Staff. On the other hand, if you tear your hair wildly, type madly, and grind out copy spasmodically, you'd feel right at home.

At any rate, this Yearbook is the result of your co-operation and our gray hairs, and we hope you like it.

May it be for all of us a Memory Book of the days of "We remember when . . ."



Our artist, Gloria Johnston

These Also Ran

FEATURE ASSISTANTS

Charlotte Fromshon
Mary Jane Brandau
Gloria Pfeiffer
Pat Chandler

Mary Speckart
Nancy Schatzman
Helen Holmberg
Ruth Todd

Mary Van Sant



Left to right: M. J. Brandau, G. Pfeiffer, G. Johnston, P. Chandler, L. Fairchild, M. A. Wintz, E. Lucas, J. Cunningham, M. Speckart, M. E. Boggiano, N. Schatzman, J. Buri, M. Liston, J. Wilkerson, C. Fromshon, B. Burke, A. Miller, M. L. Rodegast, M. Scandiff, R. Salome.

BUSINESS ASSISTANTS

Mary Jane Quirk
Ethel Hennerich
Mary Grace Kemoll
Marion Farrell
Geraldine Francis
Louise Fairchild

PHOTOGRAPHY ASSISTANT

June Wilkerson

MAKE-UP ASSISTANTS

Mary Adele Wintz
Anne Miller
Mary Lou Long
Margie Scandiff
Pat Duerr
Mary Lee Rodegast
Jane Marie Buford
Lorraine Camper
Frances Hoffman
Virginia AuBuchon

You're Very Special

Because without your help this FONTBONNE for 1945 never would have been. It is with the deepest appreciation that we express our gratitude to you for your counsel and constant aid.

MRS. EDITH KAUFMAN
Faculty Advisor

CARLOS PIAGET
Photographer

HARRY J. SWAIN, JR.
Central Engraving Co.

CHARLES C. GRIMM
Wiese Printing Co.

J. L. GLASSEN
Becktold Bindery

JACK ZEHRT
Photographer

MRS. EDWYN HOFSTETTER
Edwyn Studios

FATHER FRANCIS J. CORLEY, S.J.

SISTER THOMAS MARGARET, C.S.J.

FATHER CHARLES DEGUIRE

Our Sponsors

Mr. C. S. Beasley	Loose-Wiles Biscuit Co.
Mr. and Mrs. J. J. Bloomfield	Mr. and Mrs. James Longinotti
Dr. and Mrs. John Brandt	Mr. and Mrs. G. McCalpin
Mr. and Mrs. A. M. Burton	Mr. and Mrs. D. J. McKay
Dr. H. J. Cassidy	Mr. and Mrs. W. A. Moore
Mr. and Mrs. Vincent J. Clemens	Mr. and Mrs. Joseph L. Nagle
Mr. and Mrs. Earl E. Coghill	Mr. and Mrs. J. P. Nash
Dr. and Mrs. J. E. Colon	Mr. and Mrs. J. L. Nelson
Compliments of the Walter Burkes	Mr. and Mrs. Alfred J. Noble
Compliments of a Friend	Mr. and Mrs. N. W. Ostermeier
Mr. and Mrs. Clem Deck	Mr. and Mrs. B. T. Perezmeri
Mr. and Mrs. L. F. Donley	Mr. and Mrs. Harry J. Petrequin
Mrs. Flora Duerr	Mrs. T. A. Quirk
Walter Freund Bread Co.	Mr. and Mrs. Carl Raupp
Fontbonne Athletic Association	Mr. and Mrs. J. S. Riordan
Fontbonne College Alumnae	Mr. and Mrs. F. E. Robertson
Mr. Patric Gibbons	Mr. and Mrs. A. Sabadell
Mr. and Mrs. A. J. Hebberger	Mr. and Mrs. D. A. Salome
Mr. and Mrs. W. E. Hennerich	Mr. and Mrs. W. G. Schindler
Mr. and Mrs. B. H. Jacobsmeyer	Mr. and Mrs. O. H. Speckart
Mr. and Mrs. J. B. Johans	Rev. J. J. Taugher, C. M.
Mr. and Mrs. A. E. Keller	Mr. and Mrs. B. F. Walker
Mr. and Mrs. James Kemoll	Mr. and Mrs. B. Weidle
Mr. and Mrs. J. W. Kisling	Mr. and Mrs. J. A. Wilkerson
Mr. and Mrs. C. J. Koetting	Mr. and Mrs. John H. Wintz
Mr. and Mrs. A. J. Wiss	

Patrons

Mr. and Mrs. B. Abkemeier	Mr. and Mrs. L. F. Donley
Lorraine Abkemeier	Mrs. A. H. Dreifke
Mildred Abkemeier	Mr. and Mrs. James Fisher
Mr. and Mrs. P. J. Barry	Petty Officer 2/c James D. Fisher
Bebe and Johnnie	Fontbonne Unit of St. Louis University
Mr. and Mrs. Herbert Blattner	Classical Club
Marilyn Blattner	Mr. Herbert Forster
Mary Ellen Boggiano	Mr. and Mrs. J. A. Gettinger
Miss Betty Boll	Vivian Gettinger
Jeanne Bona	Mr. and Mrs. E. D. Grogan
Mr. and Mrs. C. J. Brandau	Mr. and Mrs. James Hanlon
Jane Marie Buford	Mr. and Mrs. H. Hegeman
Mr. and Mrs. James J. Burns	Mr. F. W. Heitmann
Mr. and Mrs. G. H. Buri	Mr. and Mrs. Paul J. Holden
Dorit Burton	Mrs. Loretta Holmberg
Mr. and Mrs. Myron P. Camper	Mr. and Mrs. J. Igoe
Mr. and Mrs. Hugh Carroll	Mr. and Mrs. E. E. Johnston
Mr. and Mrs. James A. Casey	Betty Ann Kelly
Mr. and Mrs. Thomas M. Chapman	Mr. and Mrs. C. M. Kiely
Dinorah Colon	Mr. and Mrs. Vincent J. Klutho
Compliments of a Friend	Mrs. Leo J. Kohl
Compliments of a Friend	Mr. and Mrs. Leo C. Liston
Mr. Frank J. Conroy	Mr. Norbert J. Liston
Mr. and Mrs. H. S. Crow	Lizzie and Jeanne
Mrs. Charles L. Cunningham	Mrs. L. Long
Mr. and Mrs. J. W. Delabar	Mr. and Mrs. J. Manning
Mary Jane Delabar	Mr. and Mrs. James T. McWilliams
Mr. and Mrs. J. E. Dennehy	Mrs. W. J. Metzger

Patrons

Mr. and Mrs. William Milligan
Mr. and Mrs. A. E. Milton
Doris Milton
Mr. and Mrs. Oliver H. Moegle
Shirley Moegle
Mary Kay Mueller
Mullen Undertaking Co.
Mr. and Mrs. L. W. Munkres
Mr. and Mrs. J. E. Nolan
Mr. and Mrs. John O'Kane
Mr. and Mrs. W. P. O'Keefe
Marjorie O'Keefe
Mr. and Mrs. J. J. Pechman
Clara Pechman
Rayda Cristina Perez
Pete, Taty, and Ginny
Mr. and Mrs. J. A. Pfeiffer
Mr. Ralph Picchiello
Mr. Theodore Quinn
Mrs. Joseph Rabe
Mr. and Mrs. J. W. Reid
Mary Lou and Betty Reid
Mr. and Mrs. George Riechmann
Mrs. John E. Riley
Mr. and Mrs. H. F. Rodegast
Roseberry Shoe Shop
Rosemary and Rosejoan

Rotter's Florist
Mr. and Mrs. Charles M. Ryan
Rosemary Ryan
Hank and Margie Sabadell
Mr. and Mrs. E. G. Sappington
Lieut. Marvin Schylling
Mr. and Mrs. J. G. Shelton
Shirley Smith
Mrs. E. J. Steuterman
Marilyn Steuterman
Mr. and Mrs. John M. Storm, Sr.
Mr. J. Stueber
Mrs. R. W. Temm
Mr. and Mrs. A. G. Thaman
Florence Thompson
Mary Elizabeth Tracy
Mrs. Dena Tuchschildt
Mr. and Mrs. Martin Tuey
Mrs. Mary Turek
Mr. and Mrs. Louis A. Uhri
Marianne Uhri
Mr. and Mrs. S. F. Vande Walle
Mr. and Mrs. C. M. Walters
Mr. and Mrs. J. W. Wenom
June Wilkerson
Mrs. Nell Williams
Mr. and Mrs. W. H. Workman

THE PRIDE OF FONTBONNE COLLEGE
AND ST. LOUISANS

Joe Garavelli Restaurant

The Rendezvous of Fontbonne Girls

DeBALIVIERE and DeGIVERVILLE

FOREST 1166



For Photographs

Call

PIAGET

1 1 1

FRanklin 1650

You'll Like the
Flavor and
Tenderness of

Krey's

Tenderated HAM *Ready to Serve*



Lamb
Beef
Veal
Sausage

You'll also like the economy and convenience—it's ready to eat—no cooking necessary, no fuel cost, no shrinkage in preparing. You get every pound you pay for.

The Largest Selling Ham in St. Louis

Compliments

of

The

SENIOR CLASS



Mary V. Kohl, Rosemary Holden, Rosejoan
Kisling, and Pete Wolf pause for refreshment

at

The Candlelight House

*Famed for Its Cuisine and
Picturesque Surroundings*

Invariably for after-the-show snacks,
luncheons, and dinner the Fontbonne
girls choose

THE CANDLELIGHT HOUSE

7800 CLAYTON ROAD

Compliments of

*Boggiano Brothers
Printing Company*

Printers and Stationers

JEfferson 0968

2927 Olive Street St. Louis, Mo.

Covers and Bindings

for the

1945 Fontbonne

by

Becktold Company

St. Louis, Mo.

LAWYERS TITLE COMPANY OF MISSOURI

712 CHESTNUT STREET

ST. LOUIS, MISSOURI

RALPH C. BECKER
President

ADOLPH C. KRAUS
Vice-President

Happiness and Success

TO THE

CLASS OF 1945

from

THE JUNIORS

SOUTH SIDE
ROOFING CO.

Roofing and Repair
Promptly Attended To



4212-14 GRAVOIS AVE.
ST. LOUIS, MO.

HENRY BINDER
FLanders 6010

Office Phone
HUDson 0230

Wm. Clarkson & Sons

Importers of

Serges, Veilings, Linens
Laces, Silks

612-614 Franklin Ave.
St. Louis, Mo.

Call the

Watchman-Advocate

The "Feature Papers"

For

"QUALITY PLUS ECONOMY"
PRINTING

DElmar 1515

Distinctive Hair Styles

by

Senor Martinez

COMPLETE BEAUTY SERVICE
in Air Conditioned Shop
CONGRESS HOTEL
FOrest 7824

□ □ □

ON BEHALF OF—

Thelma	Storm
Ro	Davison
Patsy	Elaine
Jane	Kel

□ □ □

SPECIAL ORDER WORK

CHestnut 0090

MONTI JEWELRY
COMPANY

School Rings

Pins

Medals

531 ARCADE BUILDING
ST. LOUIS, MO.

With the Best Wishes

of

THE SOPHOMORES

MAIN 0874

Established 1865

MAIN 0874

James Mulligan Printing and
Publishing Co.

1808 WASHINGTON AVE.

ST. LOUIS 3, MO.

Printing

Lithographing

ST. JOSEPH'S ACADEMY

FONTBONNE



A Catholic High School for Girls



SISTERS OF ST. JOSEPH OF CARONDELET

Wydown and Big Bend Boulevards

St. Louis 5, Missouri

Compliments

of

The

FRESHMAN CLASS



THE PARKMOOR

All-Cream Ice Cream
Delicious Sandwiches

Countryside Florist



9800 MANCHESTER

REpublic 1300

Phone, GARfield 6297

*Expert Optometrists and
Opticians*

DR. ALOIS A. WINTERER
DR. GEORGE A. WINTERER
DR. JEROME F. KIPPENBERGER

Eyes Scientifically Examined and Glasses
Made to Correct All Defects of the Eye

202 North Seventh (Near Pine)
ST. LOUIS

SUMMER and FALL CLASSES

Secretarial and Stenographic
Accounting, Typewriting

Morning, Afternoon, and Evening Sessions

Rubicam School

4933 Delmar FOrest 3900

3473 South Grand . . LAclede 0440

COURTESY

of

DINORAH

MAGDA

RAYDA

□ □ □

VISIT PUERTO RICO

We'll Be Waiting for You

Edwyn

Presents

Fontbonne's Most Attractive Graduate of '45



GENEVIEVE WOLF

Distinctive Portraits for The Fontbonne

BY

EDWYN

38 NORTH EUCLID

ST. LOUIS

ROSEDALE 4575



Fuel Company

*All Grades of
Smokeless Coal*

PRospect 1800

4567 DE TONTY

Buford Chevrolet Co.



144 SOUTH MAIN STREET
FREDERICKTOWN, MO.

Phone 155

IT
PAYS
TO
PLAY

BEST WISHES

from

Bassie

Elaine

Margie

Wissie

Raupp

Fairchild

Sally

Maggie

*Compliments
of*

TOWN HALL

MAX ZUCKER

Flowers

6500 CLAYTON ROAD

STerling 4242

6736 CLAYTON ROAD

(Postal Region 17)

Crescent Planing Mills
Co.

Mill and Cabinet Work

Church Furniture . . . Storm Sash



3227 North Ninth Street

FONTBONNE COLLEGE

- A Catholic institution conducted by the Sisters of St. Joseph of Carondelet for the higher education of women.
- A Corporate College of St. Louis University and as such fully accredited by the North Central Association of Colleges and Secondary Schools, by the Association of American Colleges, and by the National Catholic Educational Association.
- A degree-granting institution empowered to grant the degrees A.B., B.S., and B.S. in Home Economics.

RESIDENT AND DAY STUDENTS

FONTBONNE COLLEGE

Address the Registrar

WYDOWN AND BIG BEND BLVDS.

ST. LOUIS, MO.

*We're six little freshmen,
Just wishing you well;
We're new here at Fontbonne,
But think it's swell.*

Dot	Lou Lou
Mare	Julie
Sally	El

MISSOURI
RIDING STABLES
INC.

A. BRIX
FLORIST, INC.

1518 ST. LOUIS AVE.
CENTRAL 0885

1104 MACKLIND

STERLING 2424

Dacey & Company

Wholesale Distributors

Fresh Fruits and Vegetables
Horseradish Roots

1	SERVING	1
8	Clubs	9
5	Hotels	
5	Institutions	4
2	Restaurants	5
	Retail Grocers	

1203-1211 NORTH BROADWAY

CENtral 7125-7126

"93 Years of Service in St. Louis"

OVER 50 YEARS

Specializing in Fabrics

100% Wools De Luxe Rayons
Exclusive Prints

315
N. 10th



CENtral
6350

CLOSED EVERY THURSDAY

Best Wishes

from

Peacock Shoe Shop

815 LOCUST STREET

GLASER
DRUG
COMPANY

Compliments

of

John S. Nooter
Boiler Works

1401 SOUTH SECOND STREET

STEINWAY

Chickering



George Steck

Everett Story & Clark
Hallet & Davis Musette
Grand and Console Pianos
HAMMOND ORGANS SOLOVOX
CHEstnut 6815
AEOLIAN COMPANY of MO.
W. P. Chrisler, President
1004 OLIVE STREET St. Louis

GREETINGS

From the four of us,

The Fontbonne Musketeers,

Who to the '45 "Fontbonne"

Give three lusty cheers.

Mary Ann

Jane

Monica

Ruth



Compliments of

ELY & WALKER

ST. LOUIS 3, MO.

Manufacturers . . . Converters . . . Distributers

Compliments

of

A FRIEND

Another Book by

CENTRAL

CENTRAL ENGRAVING COMPANY

114 NORTH SEVENTH STREET

ST. LOUIS, MISSOURI

GIVE YOUR EYES

The Special Care This
PRICELESS POSSESSION
Deserves



*An Authoritative Booklet on the
Care of Eyes Will Be Sent Upon
Request*



... We Served Your Grandparents

Erker's

610 OLIVE 518 NORTH GRAND

Guild Opticians

B A D E R ' S

THE HOUSE OF QUALITY

Art Supplies

1112 LOCUST
ST. LOUIS, MO.

CHEERFUL WISHES

from the

Cheerful Cherubs

Glo	Ginny
Ro	Ginne
Ri	Viv
Fran	Jane
Nan	Marilyn

BEST WISHES

from

Sid

Jeanne	Gloria
Coffie	Donna Mae
Mary Cath	Marion

Compliments

of

Fontbonne College
Fathers' Club

WIESE PRINTING COMPANY

*Printers of
School Annuals*

2129 PINE STREET

SOUTHERN COMFORT

*The Grand
Old Drink
of the South*



ONE HUNDRED [100 PROOF] PROOF LIQUEUR

SOUTHERN COMFORT CORPORATION • SAINT LOUIS, MO.

Made by

SOUTHERN COMFORT CORPORATION
ST. LOUIS, MO.

QUALITY DAIRY COMPANY

INCORPORATED

4630

WEST FLORISSANT AVE.



"None Better"

Products



GOodfellow 6000

GOodfellow 6001

Best Wishes

of

Fontbonne College
Mothers' Club

Dohack's Bar-B-Que

*Largest Fish Friers in
Missouri*

HIGHWAY 61 and 67
LEMAY, MISSOURI

Student Directory

A

Abkemeier, Agnes Lorraine, 3012 Osage, St. Louis, 18, Missouri. LO 0168.
 Abt, Helen Carole, 7000 Amherst Ave., St. Louis, 5, Missouri. 1 Holman Road, Moberly Missouri.
 Alexander, Jeanne, 43 Hillvale Drive, Clayton, 5, Missouri. CA 3562.
 Angelides, Barbara, 303 North Union, St. Louis, 12, Missouri. RO 4016.
 AuBuchon, Mary Virginia, 7225 Zephyr, Maplewood, 17, Missouri. HI 5773.

B

Barry, Mary Margaret, 1412 Granville Place, St. Louis, 12, Missouri. RO 1656.
 Bass, June Elaine, 723 Green Street, Augusta, Georgia.
 Baumann, Marilyn Frances, 8121 Kingsbury, Clayton, 5, Missouri. CA 8706.
 Bayliss, Janet Lorraine, Sea Gull Lodge, Richards Landing, Ontario, Canada.
 Beasley, Ann Louise, 3979 Canterbury Drive, Pasadena Hills, 21, Missouri.
 Bergmeier, Charlotte, 8516 Rosemary, St. Louis, 23, Missouri. HU 4880.
 Blattner, Marilyn Ann, 926 Country Club, St. Louis, 21, Missouri. EV 7328.
 Bloomfield, Betty Belle, New Madrid, Missouri. 242J.
 Boedges, Marie, 5440 Finkman Ave., St. Louis, 9, Missouri. FL 1762.
 Boggiano, Mary Ellen, 5428 Maple, St. Louis, 12, Missouri. FO 4164.
 Bona, Margaret Jeanne, 3678 Lafayette, St. Louis, 10, Missouri. GR 1834.
 Bonacci, Jeanne Ann, 611 Second Ave. N., Hurley, Wisconsin.
 Borchardt, Mary Elizabeth, 5336 Murdoch, St. Louis, Missouri.
 Brandau, Mary Jane, 1207 Bellevue, Richmond Heights, 17, Missouri. HI 0233.
 Brandt, Joan Frances, 1128 Bellerive Blvd., St. Louis, 11, Missouri. LO 0742.
 Buford, Jane Marie, 152 South Main, Fredericktown, Missouri.
 Buri, Jane, 4545 Durant, St. Louis, 15, Missouri. EV 6586.
 Burke, Beatrice Ann, 1045 Oxford Road, N. E., Atlanta, Georgia. DE 7755.
 Burke, Peggy, 1045 Oxford Road, N. E., Atlanta, Georgia. DE 7755.
 Burns, Virginia, 825 Audubon Drive, Clayton, 5, Missouri. CA 6348.
 Burton, Dorit Ellen, 10 Aberdeen Place, St. Louis, 5, Missouri. PA 5524.
 Byrne, Eleanor, 4015 Magnolia, St. Louis, 10, Missouri. PR 4403.
 Byrne, Nancy Catherine, 5227 Murdoch, St. Louis, 9, Missouri. HU 2372.

C

Camper, Lorraine Mary, 800 Pine Street, Green Bay, Wisconsin. Howard 3885.
 Carr, Ruth Marie, 8618 Henry Ave., St. Louis, 21, Missouri. MU 7267.
 Carroll, Mary Margaret, 4518 Lexington, St. Louis, 15, Missouri. GO 5337.
 Casey, Rosemary, 3854 Labadie, St. Louis, 7, Missouri. JE 8375.
 Cassidy, June Lois, 5116 Maffitt, St. Louis, 13, Missouri. MU 4152.
 Castener, Maria Magdalena, Box 13, Jayuya, Puerto Rico.
 Cavanaugh, Louise Catherine, 6140 Oak, Kansas City, Missouri. JA 8591.
 Chandler, Patricia Anne, 1604 South Utica, Tulsa, 4, Oklahoma. 4-9373.
 Chandler, Theresa, 1604 South Utica, Tulsa, 4, Oklahoma. 4-9373.
 Chapman, Dolores, 2504 Sulphur, St. Louis, 10, Missouri. HI 8243.
 Clemens, Anne Marie, 806 William, Cape Girardeau, Missouri.
 Coff, Margaret Mary, 8755 Bridgeport, St. Louis, 17, Missouri. RE 6740.
 Coghill, Mary Ann, 4983 Itaska, St. Louis, 9, Missouri. FL 2475.
 Colon, Dinorah Julia, Font Martello, Humacao, Puerto Rico.
 Crow, Jane Carley, 4514 Maryland, St. Louis, 8, Missouri. FO 2017.
 Cunningham, Jeanne Rosemary, 5928a Julian, St. Louis, 12, Missouri. CA 2822.

D

Davis, Marceline, 5962 Cote Brillante, St. Louis, 12, Missouri.
 Davison, Jeanne Conway, 4 Pitman Place, Kirkwood, 22, Missouri. KI 1971.
 Deck, Margaret, 3840 Ashland, St. Louis, 7, Missouri. NE 2088.
 Delabar, Mary Jane, 5151 Terry, St. Louis, 15, Missouri. MU 5882.
 Dennehy, Joyce Rita, 1831 East 16th Place, Tulsa, 5, Oklahoma.
 Dofing, Rose Alma, 5049 Rhodes, St. Louis, 9, Missouri. FL 2459.
 Dohack, June Esther, Route 11, Box 61, Lemay, 23, Missouri. WA 4411.
 Donley, Rosemary Ellen, 6034 Shulte Ave., St. Louis, 20, Missouri. EV 2085.
 Dreifke, Anne, 5466 Plover, St. Louis, 20, Missouri. EV 6215.
 Duerr, Patricia Ann, 404 East Ste. Maries, Perryville, Missouri. 348.
 Duggan, Patricia Maria, 7536 Oxford Drive, Clayton, 5, Missouri. DE 5615.

Student Directory

E

Egger, Virginia, 6958 Marquette Ave., St. Louis, 20, Missouri. HI 6579.
Enright, Rosemary Hansen, 5635 Mimika Street, St. Louis, 20, Missouri. GO 6404.

F

Fairchild, Louise d'Avignon, 2511 Miner Street, Idaho Springs, Colorado.
Farrell, Marion, 7352 Pershing, University City, 5, Missouri. DE 2970.
Fisher, Ruth Mary, 3956a Russell Blvd., St. Louis, 10, Missouri. PR 1891.
Fogg, Marilyn Claire, 5753 Lindenwood, St. Louis, 9, Missouri. FL 7902.
Francis, Geraldine, 7352 Pershing, St. Louis, 5, Missouri. DE 1288.
Fricke, Vourdonna May, 4096 Holly Hills, St. Louis, 16, Missouri. HU 4295.
Friedman, Helen Zoe, 6320 Northwood, St. Louis, Missouri. CA 6786.
Fromshon, Charlotte, 1349 North Highland Ave. N. E., Atlanta, Georgia. VE 0608.

G

Ganser, Gloria Ann, 1014 Claytonia Terrace, Richmond Heights, 17, Missouri. HI 5997.
Gettinger, Vivian Mary, 4106 Virginia, St. Louis, 18, Missouri. LO 7196.
Gibbons, Norrine, 5736 McPherson, St. Louis, 12, Missouri. FO 5640.
Gleeson, Lee, 3730 Lindell Blvd., St. Louis, 8, Missouri. NE 1225. Kewanee, Illinois.
Greener, Jean, 5111 Lotus, St. Louis, 13, Missouri. FO 0417.
Grogan, Julia Ann, 5121 South Kingshighway, St. Louis, 9, Missouri. FL 4792.

H

Haemerle, Betty Jane, 4543 Nadine Court, Normandy, 21, Missouri. EV 5780.
Hanlon, Patricia Ruth, 5842 Pomplin, St. Louis, Missouri. MU 0150.
Hebberger, Anne Marie, 956 Glenmoor Lane, Glendale, 22, Missouri. TE 3-3787.
Hegeman, Ann Catherine, 29 Hillvale Drive, Clayton, 5, Missouri. PA 8572.
Hellman, Estelle, 6403 Page Blvd., St. Louis, 14, Missouri. DE 1981.
Hennerich, Ethel Laura, 7512 Rosedale Drive, St. Louis, 21, Missouri. EV 5865.
Higgins, Frances, 6149 Waterman, St. Louis, 12, Missouri. PA 2358.
Hoffman, Frances, 5636 Rhodes, St. Louis, 9, Missouri. FL 6684.
Holbrook, Theodora Myrtle, 1105 Stillwood Drive, N. E., Atlanta, Georgia.
Holden, Rosemary, 5369 Patton, St. Louis, 12, Missouri. FO 1268.
Holmberg, Helen, 8145 Washington, St. Louis, 14, Missouri. WI 0873.
Houlehin, Betty Anne, 7259 Lindell, University City, 5, Missouri. PA 3106.
Houlehin, Jean Marie, 7259 Lindell, University City, 5, Missouri. PA 3106.

I

Igoe, Marcella, 3805 Greer, St. Louis, 7, Missouri. JE 0359.

J

Jacobsmeier, Dorothy, 4724 Kossuth, St. Louis, 15, Missouri. EV 6857.
Johans, Rita Rose, 5612 Goethe, St. Louis, 9, Missouri. FL 0977.
Johnston, Gloria Mary, 328 South Banker, Effingham, Illinois.

K

Keller, Jacqueline, 24 Greendale Drive, St. Louis, 21, Missouri. PA 8533.
Kelly, Betty Ann, 6177 Washington, St. Louis, Missouri. CA 4413.
Kelly, Dolores, 6346 Pershing, St. Louis, 5, Missouri. CA 8170.
Kelly, Dorothy Elsie, 6346 Pershing, St. Louis, 5, Missouri. CA 8170.
Kelly, Mary Catherine, 5717 Astra Ave., St. Louis, 21, Missouri. EV 4611.
Kemoll, Mary Grace, 4203 North Grand Blvd., St. Louis, 7, Missouri. CE 4899.
Kendall, Robin, 6249 Washington, St. Louis, 12, Missouri.
Kennedy, Rosemary, 5861 Nina Place, St. Louis, 12, Missouri. DE 5948.
Kiely, Elizabeth Anne, 4925 Neosho, St. Louis, 9, Missouri. FL 2454.
Kisling, Rosejoan, 11 Deer Creek Woods, Ladue, 17, Missouri. WY 1338.
Klinge, Elizabeth, 6173 Pershing, St. Louis, 12, Missouri. PA 5705.
Klutho, Mary Joan, 6149 Marwinette, St. Louis, 16, Missouri. HU 5548.
Koetting, Anita Julia, 525 Jefferson, Ste. Genevieve, Missouri. 370.
Kohl, Mary Virginia, 13 Dartford, Clayton, 5, Missouri. PA 1873.
Kramolowsky, Anne, 6920 Cornell, University City, 5, Missouri. CA 3590.
Kramolowsky, Mary, 6920 Cornell, University City, 5, Missouri. CA 3590.

L

Lamwersiek, Ruth, 3006 Hatherly Drive, Normandy, 21, Missouri. EV 7182.
Landwehr, Margaret Ann, 830 Fairmount Blvd., Jefferson City, Missouri.
Lee, Donna Mae, 364 North Hanley Road, University City, 5, Missouri. CA 1248.

Student Directory

Liston, Monica, 830 Purdue Ave., University City, 5, Missouri. PA 7952.
 Long, Mary Louise, 4624 McPherson, St. Louis, 8, Missouri. FO 8596.
 Longinotti, Dorothy, 17 Circle Drive, Hot Springs, Arkansas. 2259.
 Longworth, Gloria Marie, 7215 Delta, Richmond Heights, 17, Missouri. HI 4215.
 Lucas, Elizabeth Ann, 5368 Cabanne, St. Louis, 12, Missouri. FO 6665.

M

Mansour, Astrid Agatha, Box 226, Lake Village, Arkansas.
 Mason, Marjorie Ann, 1311 South Kentucky Ave., Evansville, 13, Indiana. 2-4575.
 May, Rosemary Ann, 31 Ridgemoor, Clayton, 5, Missouri. CA 6034.
 McCalpin, Mary Margaret, 4937 Sutherland, St. Louis, 9, Missouri. FL 6064.
 McKay, Patricia, 915 South Bemiston, Clayton, 5, Missouri. PA 2712.
 McNamee, Rose Brigid, 2314 University Street, St. Louis, 7, Missouri.
 McWilliams, Doris Marie, 5434 Wren, St. Louis, 20, Missouri. EV 5480.
 Metzger, Rhea Mae, 7150 Princeton, University City, 5, Missouri. CA 1388.
 Michelson, Sidonia Ann, 53 Ridgemoor, Clayton, 5, Missouri. PA 7244.
 Miller, Anne, 1234 Boland Place, Richmond Heights, 17, Missouri. ST 0469.
 Milligan, Dorothy, 6560 Neosho, St. Louis, 9, Missouri. FL 3698.
 Milton, Doris Theresa, 408 Fairwood Lane, Kirkwood, 22, Missouri. KI 4157-J.
 Moegle, Mary Shirley, 5700 Mardel, St. Louis, 9, Missouri. HU 5705.
 Monahan, Mary Ann, 8036 Delmar Blvd., University City, 5, Missouri. PA 6187.
 Moore, Mary, 4635 Penrose, St. Louis, Missouri. CO 0472.
 Mueller, Mary Kathryn, 709 South Skinker, St. Louis, 5, Missouri. PA 3476.
 Muenster, Mary Catherine, 5034 Alaska, St. Louis, 11, Missouri. PL 9234.
 Mulherin, Elizabeth Catherine, 1318 Monte Sano, Augusta, Georgia. 3-4602.
 Mulherin, Eulalia Feuger, 2705 Henry Street, Augusta, Georgia. 3-4822.
 Munkres, Thelma, 8349 Ardsley Drive, St. Louis, 21, Missouri. MU 8269.
 Murphy, Mary Jayne, 6502 Oakland, St. Louis, 10, Missouri. ST 3947.

N

Nagle, Ritarose Mary, 4946 Tieman, St. Louis, 23, Missouri. HU 4727.
 Nahmensen, Annette, 6536 Odell, St. Louis, 9, Missouri. ST 1925.
 Nash, Charlotte Ann, 403 South Monroe, Clinton, Illinois. 821.
 Nolan, Jane, 5925 Pershing, St. Louis, 12, Missouri. PA 4009.

O

Oberdorfer, Mary Janet, 53 Seventh Ave., Iron River, Michigan. 152.
 O'Kane, Marie Antoinette, 3516 Utah Place, St. Louis, 18, Missouri. LA 3539.
 O'Keefe, Marjorie Ann, 7052 West Park, St. Louis, 17, Missouri. HI 2483.
 Ostermeier, Nancy Jean, 7219 Canterbury Drive, St. Louis, 21, Missouri. MU 7365.

P

Pechman, Clara Marie, 6041 Washington, St. Louis, 12, Missouri. CA 0576.
 Peet, Mary Regina, 7244 Ward Parkway, Kansas City, 5, Missouri. HI 5563.
 Perez, Rayda Cristina, 12 Nairn Ave., Santurce, Puerto Rico.
 Perry, Helen, 5715 Rhodes, St. Louis, 9, Missouri. FL 0638.
 Petrequin, Joan Louise, 375 North 5th Street, Ste. Genevieve, Missouri. 163.
 Petrequin, Mary Elizabeth, 375 North 5th Street, Ste. Genevieve, Missouri. 163.
 Pfeiffer, Gloria, 5720 Walsh, St. Louis, 9, Missouri. FL 7747.
 Phelan, Bette Ann, 3930 Juniata Street, St. Louis, 16, Missouri. DE 4146.
 Podjesk, Bernice, 3310a Itaska, St. Louis, 11, Missouri.
 Pope, Louise Catherine, 7129 Dartmouth, University City, 5, Missouri. DE 3973.
 Popham, Clarendon, 112 West 18th, Caruthersville, Missouri. 569.

Q

Quinn, Patricia Anne, St. Joseph, Missouri.
 Quirk, Mary Jane, 6059 McPherson, St. Louis, 12, Missouri. DE 3647.
 Quirk, Nancy, 6059 McPherson, St. Louis, 12, Missouri. DE 3647.

R

Rabe, Gladys Emily, 5061 Cabanne, St. Louis, 13, Missouri. FO 1675.
 Raupp, Betty Anne, 404 South Crea Street, Decatur, 1, Illinois. 7783.
 Reid, Betty, 410 Del-Whi-Mo Court, Sedalia, Missouri.
 Reid, Mary Lou, 410 Del-Whi-Mo Court, Sedalia, Missouri.
 Richard, Grace Marie, 3014 Shenandoah, St. Louis, Missouri.
 Richey, Colleen, 4052 Connecticut, St. Louis, 16, Missouri. LA 3848.

Student Directory

Riechmann, Mary Lou, 3660 Hartford Street, St. Louis, 16, Missouri. PR 3867.
 Riordan, Mary Ann, 8038 Bannon, University City, 5, Missouri. DE 2310.
 Robertson, Dorothy Jean, 316 Skinker Blvd., St. Louis, 5, Missouri. DE 2035.
 Rodegast, Mary Lee, 1121 North Montgomery, Litchfield, Illinois. 456X.
 Rodegast, Virginia Mae, 1121 North Montgomery, Litchfield, Illinois. 456X.
 Roman, Darline Gloria, 3917 Waverly Ave., East St. Louis, Illinois. BR 2711W.
 Ryan, Rosemary Alice, 7158 Pershing, University City, 5, Missouri. CA 6296.

S

Sabadell, Marguerite, Chase Hotel, St. Louis, 8, Missouri. RO 2500.
 Salome, Rosaline, 740 Crew Street, S. W., Atlanta, Georgia. WA 5649.
 Sappington, Shirley May, 5022 Miami, St. Louis, 9, Missouri. FL 1709.
 Scandiff, Marjorie Lucille, 1420 West Lexington Street, Chicago, 7, Illinois. Monroe 0783.
 Schatzman, Jeanne Marie, 7230 Northmoor Drive, University City, 5, Missouri. CA 3761.
 Schatzman, Nancy Lou, 7230 Northmoor Drive, University City, 5, Missouri. CA 3761.
 Schindler, Aurelia Ruth, 403 North Walnut, Perryville, Missouri. 116W.
 Schneider, Elaine Margaret, 3934a Sullivan, St. Louis, 7, Missouri. NE 6922.
 Scott, Mary Ellen, 1036 Fairmount, St. Louis, 10, Missouri. ST 2296.
 Sears, Georgette Elise, 7053 Lindell, University City, 5, Missouri. PA 1718.
 Shelton, Margaret, 5823a Highland, St. Louis, 12, Missouri. MU 5743.
 Sly, Jane, 3073 Andover Drive, St. Louis, Missouri. MU 8449.
 Smith, M. Shirley, 7200 Creveling Drive, University City, 5, Missouri. PA 0102.
 Speckart, Mary, 4324 Euclid, St. Louis, 15, Missouri. MU 9720.
 Springman, Margaret, 1129 State Street, Alton, 5, Illinois. 2-1958.
 Steuterman, Marilyn, 8407 Ardsley Drive, St. Louis, 21, Missouri. MU 6279.
 Storm, Rose Marie, 337 West Madison, Kirkwood, 22, Missouri. KI 1208.
 Stueber, Mary Alice, 5426 Ruskin, St. Louis, 15, Missouri. GO 4574.

T

Temm, Kathryn Adele, 54 Aberdeen Place, Clayton, 5, Missouri. CA 8150.
 Thaman, Audrey Marie, 4028 Wyoming, St. Louis, 16, Missouri. PR 7437.
 Todd, Ruth Dell, 983 Highland Ave., N. Y., Atlanta, Georgia. HI 5173J.
 Tolkacz, Alice, 451 West Jackson Road, Webster Groves, Missouri. RE 0741.
 Tuchschildt, Mary Jane, 30 Crestwood, Clayton, 5, Missouri. CA 8761.
 Tuey, Mary Elizabeth, 327 West Lorton, Roodhouse, Illinois.

U

Uhri, Marianne Louise, 5069a Mardel, St. Louis, 9, Missouri. FL 1285.

V

Vande Walle, Elaine Mae, 1200 Cass Street, Green Bay, Wisconsin. HO 1210M.
 Van Sant, Mary Annette, 1259 Ellis, Augusta, Georgia.
 Vassely, Penelope, 6498 Oakland, St. Louis, 10, Missouri. ST 0271.
 Vessell, Georgia Johanna, Route 1, Ste. Genevieve, Missouri. 1920.
 Vogel, Gloria Cecile, 6134 Tennessee, St. Louis, 11, Missouri. LO 5255.

W

Walker, Marjorie Anne, Box D, Winchester, Illinois. 111B.
 Walters, Gloria Lee, 3958 Flora Place, St. Louis, 10, Missouri. LA 2848.
 Weber, Ann Kimbrough, 4216 "I" Street, Little Rock, Arkansas. 3-3240.
 Wedlock, Shirley, 616 North Hennepin Avenue, Dixon, Illinois. B1363.
 Weidle, Catherine, 3953 Cottage, St. Louis, 13, Missouri. FR 5637.
 Wenom, Jean, 14 Moreland Place, Glendale, 22, Missouri. KI 1516.
 Wilkerson, June, 7241 Canterbury Drive, St. Louis, 21, Missouri. WI 0615.
 Williams, Sally Polk, 484 Sinclair Ave., Atlanta, Georgia. WA 1060.
 Wintz, Mary Adele, 7162 West Park, Richmond Heights, 17, Missouri. HI 7713.
 Wiss, Eileen Ruth, 305 South Spruce, Pana, Illinois. 3452.
 Wolf, Genevieve, 160 Cornelia, Glendale, 22, Missouri. RE 6241.
 Wolf, Patricia, 160 Cornelia, Glendale, 22, Missouri. RE 6241.
 Workman, Margaret Elaine, 4949 Aldrich Ave. South, Minneapolis, 5, Minnesota. Locust 4216.
 Wortman, Ruth, 5444 Walsh Street, St. Louis, 9, Missouri. FL 6159.

Y

Yungbluth, Betty Ruth, 7019 Dartmouth, University City, 5, Missouri. PA 4691.

Autographs