



OPENERS

FONTBONNE COLLEGE m a g a z i n e

Summer 1989

In This Issue

Openers	page 2
Commencement 1989	page 4
A Time to Reflect	page 6
Photography: Everyday Life	page 8
Alumni Profile: Twenty Years at 1843 Kennett Place	page 10
Alumni Update	page 13
1989 Fall Events Calendar	page 16

Cover: 1843 Kennett Place is Mary Dean Alcorn Keyes' home in Lafayette Square. This year marks the Twentieth Lafayette House and Garden Tour. The Keyes are the only family still in the House Tour, twenty years after moving to the Square. Cover photo by Jessica Johnson.

The Fontbonne College Magazine is published by the Department of Institutional Advancement, Fontbonne College, 6800 Wydown Blvd., St. Louis, MO 63105, 314-889-1402.

Fontbonne College President, **Meneve Dunham**
Vice President for Institutional Advancement, **Tom Yahraes**
Director of Alumni Relations, **Stephanie Stueber, CSJ**
Director of Public Relations and Publications, **Jessica Johnson**

Third class postage paid, Clayton, Mo. The Magazine is sent to alumni and friends of Fontbonne College. Copyright 1989.

Fontbonne College does not discriminate on the basis of race, color, religion, age, sex, national or ethnic origin, or handicap in the administration of its educational policies, admission policies, scholarship and loan programs, and athletic and other school administered programs.

Staff

Editor **Jessica Johnson**
Director of Public Relations and Publications
Writers **Jessica Johnson**
Susan King
Media Coordinator/Writer, Public Relations
Photographers **Jessica Johnson**
Susan King
Richard Finke
Freelance Photographer

Fontbonne Receives Grand Prize for Computer Learning Month Event

Fontbonne College received the grand prize in the "Group to Group" share from the Computer Learning Foundation in California, for the learning session, "Coffee, Cookies and Computers," held in October, 1988, Computer Learning Month. Sponsored by the Fontbonne Computer Science Department, the program gave senior citizens the chance to get acquainted with all aspects of computers.

An afternoon session was held for participants from Cardinal Ritter Institute, an agency for senior and disabled citizens in the St. Louis area. In conjunction with the theme, "Computers Are For All Ages," computer science students volunteered to work with the seniors on the computer packages.

The free event was coordinated by Mary K. Abkemier and Mary Stephen of the Fontbonne mathematics and computer science department.

The grand prize included a computer system for both Cardinal Ritter Institute and Fontbonne College.

Fontbonne College First Annual Golf Tournament

To kick-off Fontbonne College's 65th anniversary celebration, Fontbonne will sponsor its first annual golf tournament at Norwood Hills Country Club, July 17, 1989.

The tournament format is a foursome scramble and it is open to the public. The driving range will open at 9 a.m. and brunch will served at 10:30 a.m.

Tee-off time is 12 noon. After the tournament, winners will be honored at an awards dinner and an auction will follow.

The entry fee is \$250 per golfer which includes the greens fee, golf cart, driving range, brunch, cocktails, dinner and prizes. All proceeds from the event will go to Fontbonne College's Scholarship Fund and the entry fee is tax deductible.

For more information contact Tom Yahraes, 889-1412.

Police Memorial is Unveiled

A bronze statue, honoring the 146 St. Louis police officers who have been killed in the line of duty, was unveiled May 15, 1989 in a ceremony in front of the Civil Courts building downtown.

The 9 1/2-foot-tall statue is of a rookie police officer with his head bowed for his fallen comrades. Rudy Torrini, professor and chairperson of the department of art, was commissioned to do the sculpture.

Jack Buck, announcer for the baseball Cardinals, was the ceremony's main speaker. The invocation was given by The Most Reverend John L. May, Archbishop of St. Louis. Mayor Vincent C. Schoemehl Jr., Police Chief Robert E. Scheetz, Buck and Ted C. Wetterau, chief executive officer of Wetterau, Inc., pulled a black cloth to reveal the statue.

50th Annual Music Festival



Sister John Joseph Bezdek judges the K-8 piano contestants at the 50th annual Fontbonne Music Festival. John Philips, chairperson and professor of the department of music, was also a judge for the event.

Fontbonne Board of Trustees Elects New Members



Jessica Johnson

In March, **Ronald Clair Giles**, was elected a member of the Fontbonne College Board of Trustees. Giles, staff vice president of internal auditing at General Dynamics Corporation, received a bachelor of science and a bachelor of arts degree from the University of South Dakota. He is a member of the national and St. Louis Chapter of the Institute of Internal Auditors.



Jessica Johnson

Suzanne Marie Kearney, CSJ, is president and chief executive officer of the House of Affirmation in Hopedale, Mass. Previously a teacher at Rosati-Kain and faculty member of the Pope John XXIII National Seminary in Massachusetts, Kearney earned a bachelor's degree from Fontbonne College. She received a master's degree in theology from St. Mary's University in Texas and a doctorate in theology from Boston University.



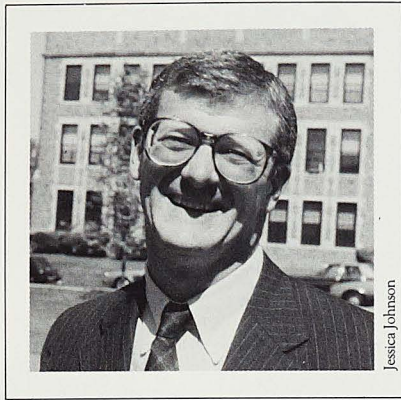
Jessica Johnson

Marylen Mann is a research instructor in medicine at Washington University School of Medicine and executive director of OASIS (Older Adult Service and Information System) of Jewish Hospital. She has received the United States Surgeon General's Bronze Medal Award, the YWCA Special Leadership Award, and was selected as Clayton Woman of the Year and as a St. Louis Globe Democrat's Woman of Achievement in 1980.



Jessica Johnson

Mary McGlone, CSJ, is pursuing a doctorate in theology from St. Louis University. She previously served in campus ministry at Fontbonne College and St. Norbert's College. From 1981 to 1987, she served pastoral ministry in Peru.



Jessica Johnson

Pierce Powers Jr. has been affiliated with the Charles L. Crane Agency since 1969 and currently serves as secretary to the corporation and as a member of the board of directors. He has served on various insurance company advisory boards and is past board member of Independent Insurance Agents of St. Louis. Powers is president-elect of the AMC Cancer Research Center Board, president of the Tennessee Society of St. Louis and board member of Christians in Commerce (CIC).

Trustees elected to status of Trustee Emeriti: Ruth Margaret Raupp, CSJ, Merle Sanguinet and Hy A. Waltuch.

Congrats to Marion Black

Marion Black, wife of Van-Lear Black III, chairman of the Fontbonne College Board of Trustees, was honored as one of the 1988 Women of Achievement. Marion Black was recognized for her efforts in Cultural Enrichment.

Attention Fontbonne Business Graduates

Fontbonne's newest and fastest growing organization wants you! Membership in Delta Mu Delta, the national honor society in business, is open to Fontbonne alumni who meet these requirements:

- graduated with an undergraduate or graduate degree in business
- and
- have a cumulative grade point average of 3.5 undergraduate or 3.75 graduate (MBA).

In addition to national recognition of your academic achievement, the contacts and networking of its members are a coveted benefit. For more information or to apply for membership, contact Bill Foster, faculty advisor, 889-1418.

Faculty Member Signs Publishing Contract

Joseph Scotti, assistant professor in the music department, has signed a publishing contract with the Smithsonian Institution Press, Washington, D.C., for his book, "Piano Rags of Joseph Lamb." Scotti is the nation's leading expert on ragtime composer, Joseph Lamb.

First Mother's Day Run a Success



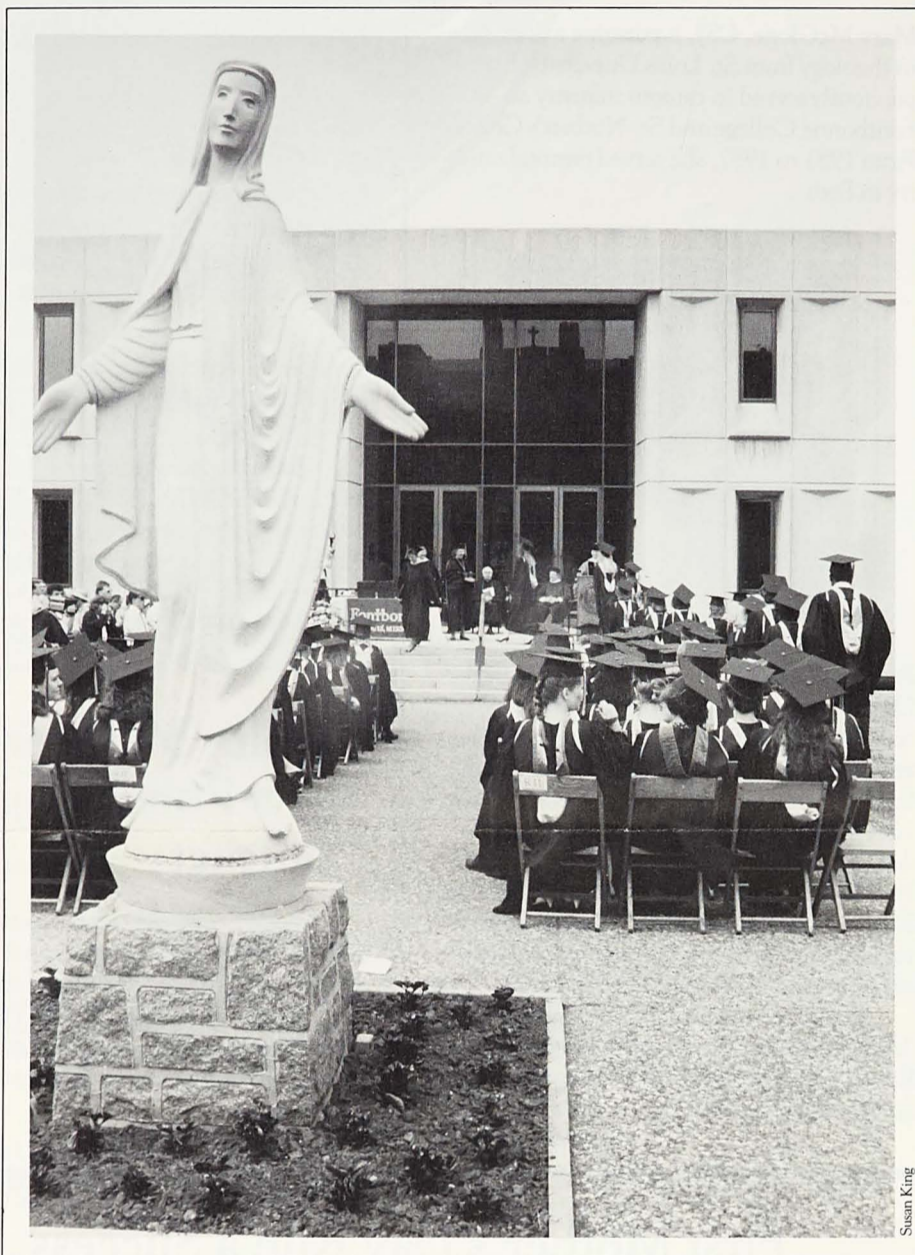
Susan King

The first annual Fontbonne College Mother's Day Run raced off to a wonderful start. More than 300 runners and walkers participated in the event on May 14.

Tim Brennan was the fastest man in the 5K race with a time of 16 minutes and 33 seconds. The overall winner for the women's division was Lynne Williams with a time of 19:25.

Commencement

by Susan King



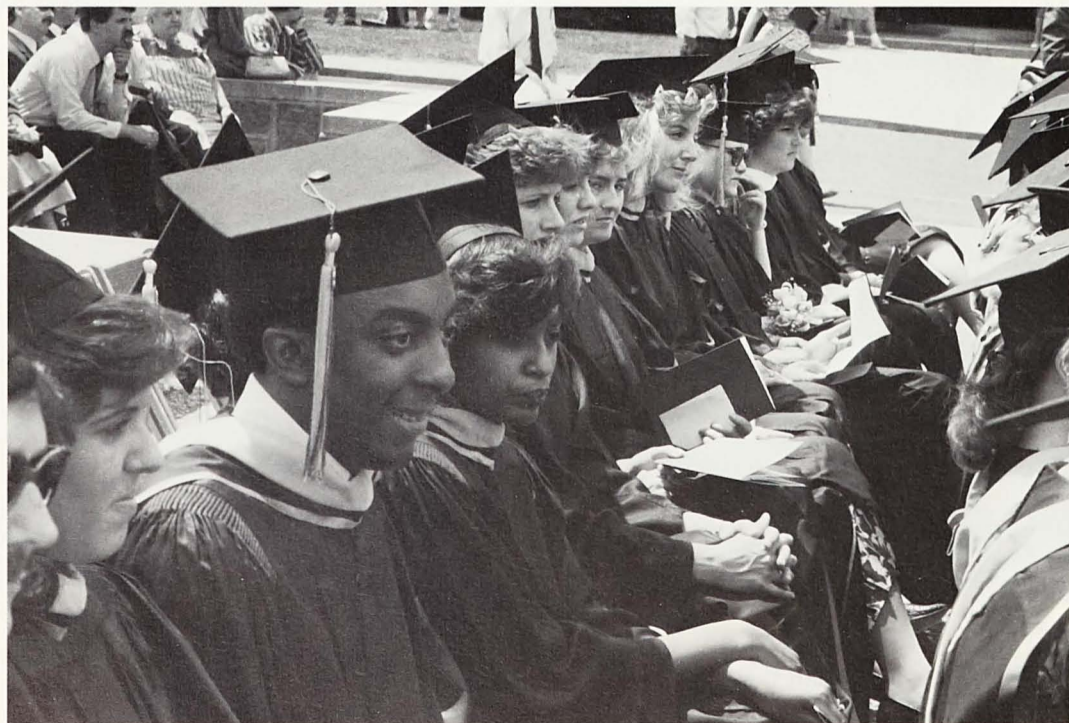
Susan King

“I want to be the first to congratulate my fellow graduates,” said The Most Reverend John L. May, Archbishop of St. Louis, in his address to the graduating class of 1989 at Fontbonne College.

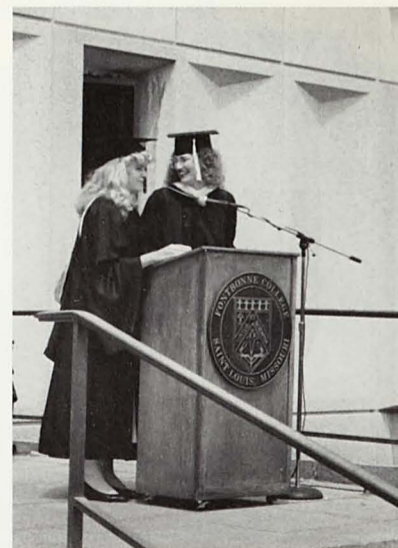
In addition to being the speaker, Archbishop May received the doctor of humane letters at the commencement exercises, May 13. The warm spring day brought 275 graduates and their families together in the quadrangle of the college for the conferring of degrees by Dr. Meneve Dunham, president of Fontbonne College.

In his brief 15-minute speech, Archbishop May described the societies that have surrendered to those who take away moral and political freedom. “We have in our audience people from different lands and different religious backgrounds,” he said. “Inner freedom is a matter of character and conviction.”

Cleverly, Archbishop May ended his speech with an anecdote from Winston Churchill’s speech at Harrow School, his alma mater. “We must stand for political moral and spiritual freedom and never give in to those who would take it away from us. I have one piece of advice for you,” the Archbishop quoted Churchill. “Never give in. Never give in. Never, never, never give in. Then he sat down.” As Archbishop May returned to his seat on the stage in front of the library, the crowd, briefly perplexed, began to laugh and break into a round of applause.



Jessica Johnson



Jessica Johnson

Lisa Moritz (left) and Margaret Hesse (right) deliver the senior statement at Commencement 1989.

ent

1989

In 1980, Archbishop May was appointed the seventh Archbishop of the St. Louis Archdiocese. For his motto, Archbishop May chose a phrase from St. Paul's letter to the Colossians, in which Paul refers to himself indirectly as "a fellow servant of the Lord."

Two years ago, Archbishop May was elected to serve as president of the National Conference of Catholic Bishops. As a member of the National Conference of Christians and Jews, he has participated in interfaith gatherings. He has shown strong leadership in getting AIDS hospices started as an ecumenical project and displays deliberate attention to a variety of archdiocesan issues.

Archbishop May was presented with the honorary degree of doctor of humane letters "because of the message he brings to others, because of his example as a Catholic leader and through his life of giving and loving." By serving the people of the community, Archbishop May exemplifies the type of leadership to which Fontbonne graduates aspire.

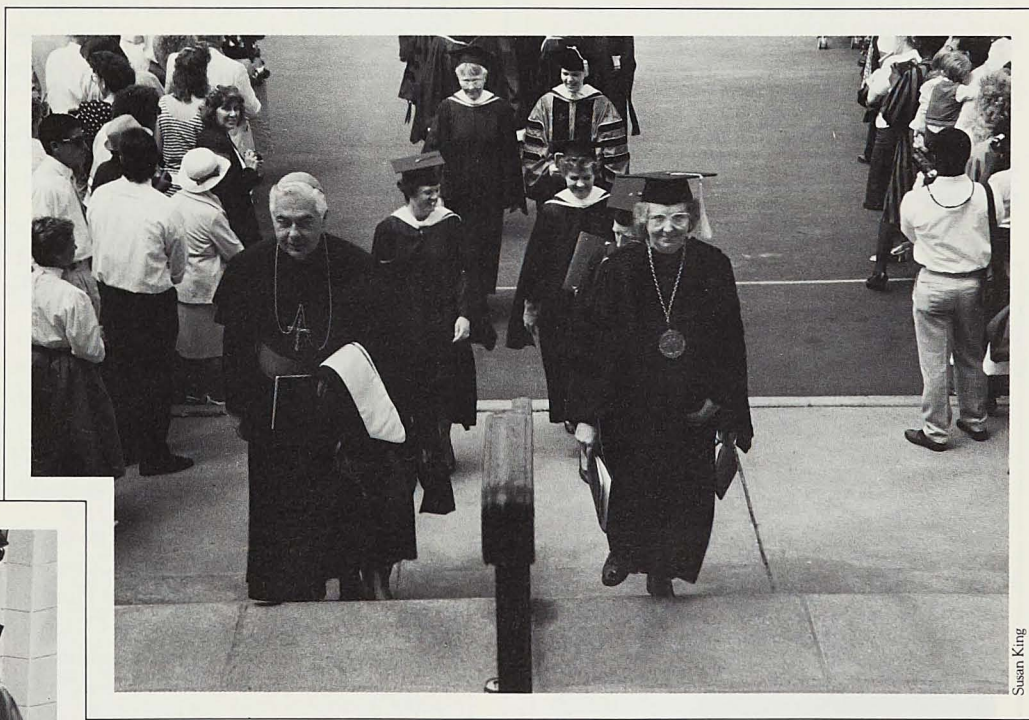
Also during the commencement ceremonies, Margaret Ann Hesse, bachelor of arts in communication, was awarded the alumni hood. The alumni hood honors a senior who has shown distinguished service to the college and is likely to continue such service as a member of the Alumni Association. Hesse graduated with cum laude honors and was named to Kappa Gamma Pi Catholic Honorary Society. For four years, she received the Presidential Scholarship and was on the Dean's List each semester. Hesse graduated from Ursuline Academy in 1985.

The senior statement to the new alumni of Fontbonne was presented by Hesse and Lisa Jeanine Moritz, bachelor of science in education/special education. ♦



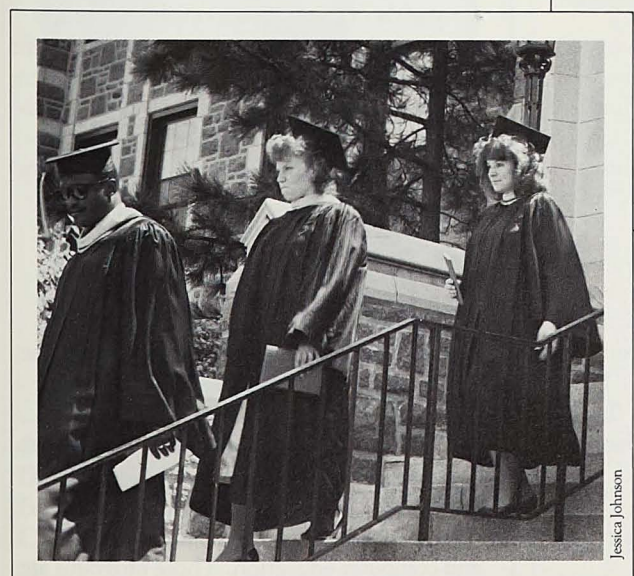
Susan King

The Most Reverend John L. May, Archbishop of St. Louis.



Susan King

Archbishop May and Meneve Dunham, president of Fontbonne College, lead the final processional.



Jessica Johnson

ret Hesse
ement at

A Time to Reflect: President Meneve Dunham, Four Years at Fontbonne

Dr. Meneve Dunham became Fontbonne College's 12th president and first lay president on July 1, 1985.

Dunham was president of Clarke College, Dubuque, Iowa from 1977 through 1983, and vice president of development at Mount Mercy College, Cedar Rapids, Iowa from 1983 until her appointment as Fontbonne president.

At Mount Mercy she directed a two-year, three-million-dollar capital campaign. While at Clarke, enrollment increased by 35 percent, gift and grant income doubled, and the North Central Association of Colleges and Secondary Schools awarded Clarke a ten year reaccreditation.

Upon accepting the Fontbonne position, Dunham said, "Fontbonne is a gem in the Catholic tradition of small, coeducational, liberal arts colleges. I look forward to strengthening the relationship between Fontbonne and the St. Louis community."

Now after four years as Fontbonne college president, Dunham takes time to reflect on the past and share her vision of Fontbonne's future.

FCM: Does being the first lay president at Fontbonne College pose any special problems?

MD: When I first came to Fontbonne



Meneve Dunham accepts the position as president of Fontbonne College.

College in the spring of 1985, I was on campus as a candidate for the position of the president. I was interviewed by groups and individuals, had lots of material to read and in general, received a positive picture of the College.

I knew there was some concern about the "first lay president" being appointed. Because I had worked in Catholic higher education since 1962, I knew that would not be a problem.

The budget for 1985-86 presented to the Board of Trustees was balanced. I had toured the library and the first two floors of Ryan Hall and those buildings were in good shape. My interview went well; I believed the various constituencies, the trustees, faculty, staff, students and alumni, would accept me.

FCM: What has been your toughest experience at Fontbonne in the past four years?

MD: I accepted the position and moved to St. Louis in June. Since I had been a successful Catholic college president for six years, I thought my tenure as president of Fontbonne College would at least begin with a year of simple learning about Fontbonne College and getting a fund-raising program in place.

Little did I know what the first three months would bring. By October, I found the budget was not balanced. There was a deficit of \$450,000 plus a loan of \$200,000 had to be paid to the Province, and the bills from the summer had not been paid. The classrooms were ill-equipped, faculty salaries were the lowest in the state, four new roofs were needed, parts of the heating system did not work and the residence halls needed attention.

At first I panicked. How was I going to hold this enterprise — Fontbonne College — together? I had to face the alumni at Homecoming, the Board of Trustees at its October meeting and the entire College community at my inauguration. I did not have a "rosy" story to tell nor a "pretty picture" to describe.

However, it was "control, planning, and accountability," with the interlocking pieces working together that brought the deficit down to a mere \$45,000, repaid the loan to the Province, put a roof on the Science Building and started Fontbonne College on the road to a more secure future. The academic year 1985-86 was a tough experience for all the players.

FCM: What role does a religious college serve in the community?

MD: Fontbonne College is a Catholic college, continuing to be sponsored by the



Gregory and Susan Vatterott receive a bronze medallion from Meneve Dunham at the President's Association Dinner 1988.



Homecoming 1988. The President with the Alumni Association Officers.

Sisters of St. Joseph of Carondelet, St. Louis Province. Through the work of Ruth Yates, CSJ, campus minister, the college is reminded constantly of its social responsibilities and is given ample opportunities to contribute to the spiritual well-being of humanity. All members of our college community strive in various degrees to care and serve the St. Louis community as well as each member of the Fontbonne community.

One of the charisms of the Sisters of St. Joseph is meeting the needs of the community in which the Sisters live and work. The College follows this tradition and thus has an impact on education and values in the St. Louis metropolitan area.

FCM: Has the academic format of Fontbonne changed to meet the needs of the community?

MD: The newest academic areas are master's degrees in business administration and computer education. Those programs are centers of growth which indicate needs are being met.

At the undergraduate level, new academic programs have not been introduced. However, there have been improvements in student services, increased marketing efforts and locating branch campuses in O'Fallon, Fenton, and Wentzville have given more visibility to Fontbonne's coeducational experiences. The student body is now 36 percent male, 15 percent minority and 60 percent Catholic. As Archbishop May indicated in his commencement address to the 1989 graduates, "Fontbonne is pluralistic and ecumenical in its approach."

Another addition to the Fontbonne campus are the many different non-profit educational groups who rent space here. A few of these groups are: The Network for Educational Development, which is for staff development in the public schools; Springboard to Learning, which promotes multi-cultural experiences in elementary schools; and the United States Sports Academy, which sponsors a graduate program in athletics.

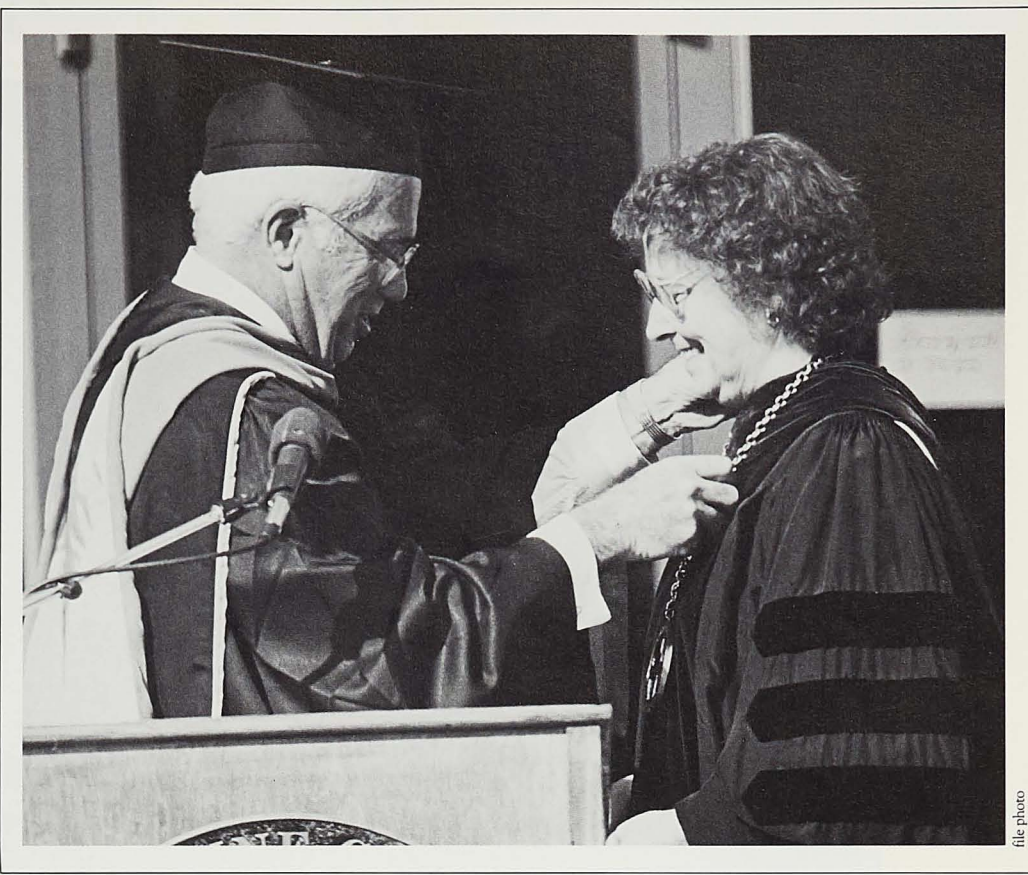
FCM: Has the scope and mission of Fontbonne College changed? If so, how?

MD: Fontbonne's current mission statement was approved by the Board of Trustees in the mid-1970s. During the last comprehensive review by a North Central Association visiting team, the spring of 1985, the team report commended the College for the clarity and vision provided by its scope and mission statement.

Fontbonne has a unique way of combining liberal education and the attainment of professional competencies within a values-oriented community context.

The College states what its educational philosophy is and then proceeds to provide programs to assist students to develop within these parameters.

An aspect of Fontbonne life that needs attention in our mission statement is a statement on goals for graduate programs. Since 1985, the number of graduate students has grown to 25 percent of Fontbonne's enrollment. I believe that fact is not reflected in our mission statement.



George S. Graff presents Meneve Dunham with the presidential medallion at her inauguration, October 17, 1985.

FCM: What has been your greatest achievement at Fontbonne?

MD: The biggest changes are the physical things — the things you can see. However, the most rewarding part is to see all the components working together to ensure the future of Fontbonne.

All of the buildings have been repainted. When I first came to Fontbonne, paint was peeling off the classroom walls. Last summer the theatre was renovated, the heating and cooling system has been upgraded and is more efficient, new thermal windows have been installed, a home economics lab and two biology labs have been renovated, and St. Joseph's Hall has been carpeted and refurbished.

This summer Medaille Hall will get a new coat of paint, carpeting and new furnishings; there will be new computer labs in Ryan Hall; two chemistry labs and a prep lab will be renovated; and there will be a research and development lab in the home economics department.

FCM: How is the Campaign For Fontbonne progressing and what are your thoughts on it with two years remaining?

MD: The Campaign for Fontbonne, with \$4.3 million received, is moving toward its \$6 million goal. The contributions that have been received are providing the capital to increase the Endowment Fund, to lessen the problems of deferred maintenance and to keep the operating budget balanced, while increasing salaries.

Multi-year pledges keep this process in place annually.

We continue the process of identifying prospective donors and finding the linkage between friends, corporations, foundations and Fontbonne College. Events like the Mother's Day Run, the Annual Fontbonne Golf Tournament, the Founders' Day Dinner and Business Forums help us tell the Fontbonne story. We are ever in need of more volunteers to assist us in our efforts to make Fontbonne's future bright and shining.

FCM: What are your goals in your next three years at Fontbonne?

MD: The North Central team did note one concern where the implementation does not match the mission. General education requirements, which all undergraduates must complete in order to receive a Fontbonne degree, point to priorities recommended by the faculty and approved by the Board of Trustees.

Yet, as the NCA team noted Fontbonne in its academic requirements minimizes its intellectual responsibility to examine the meaning of Christian experience. The requirements in religious studies and philosophy need to be increased. How to accomplish this revision is the task of the Curriculum Committee and the Faculty General Assembly.

In the short term — 3 years — the Fontbonne community will be preparing for the next comprehensive review by the North Central Association. The team visit will be in the fall of 1992. My goal is to receive a 10-year reaccreditation period — one visit in the 1990s compared with four in the 1980s.

To achieve this goal, the College community has to continue its efforts in building resources and the endowment fund, improving the physical plant and purchasing equipment, meeting salary plans, recruitment goals, increasing productivity in fund raising and remembering that all this activity is for one purpose — providing a quality, even excellent, educational experience for the students who choose to attend Fontbonne College.

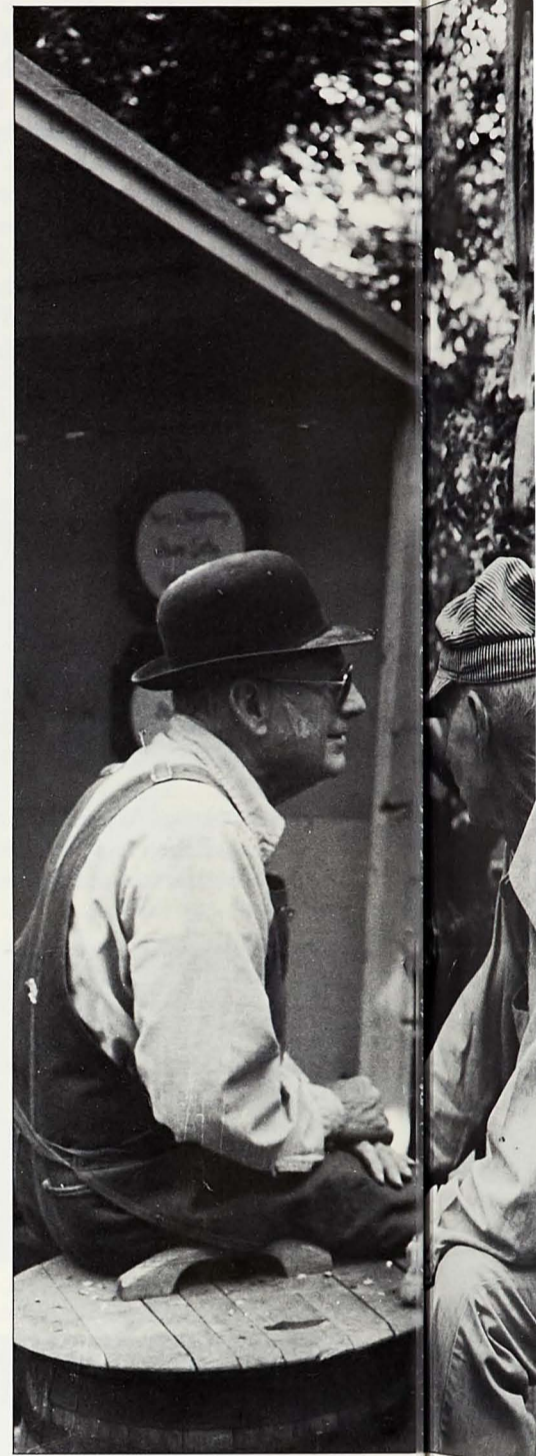
In addition, the College needs to address positively the revision of general education requirements, develop a student assessment program and provide an organizational structure for the graduate programs. If the College community can complete those tasks productively and provide an excellent self-study, a North Central team will not be on the Fontbonne campus until the year 2003. And I will be satisfied that I have met the "Fontbonne Challenge." ♦



Coach Lee McKinney gives Meneve Dunham, the first member of the Fontbonne Athletic Booster Club, a Booster Club jacket.

Photograph Eve

By Karen Minshall '89

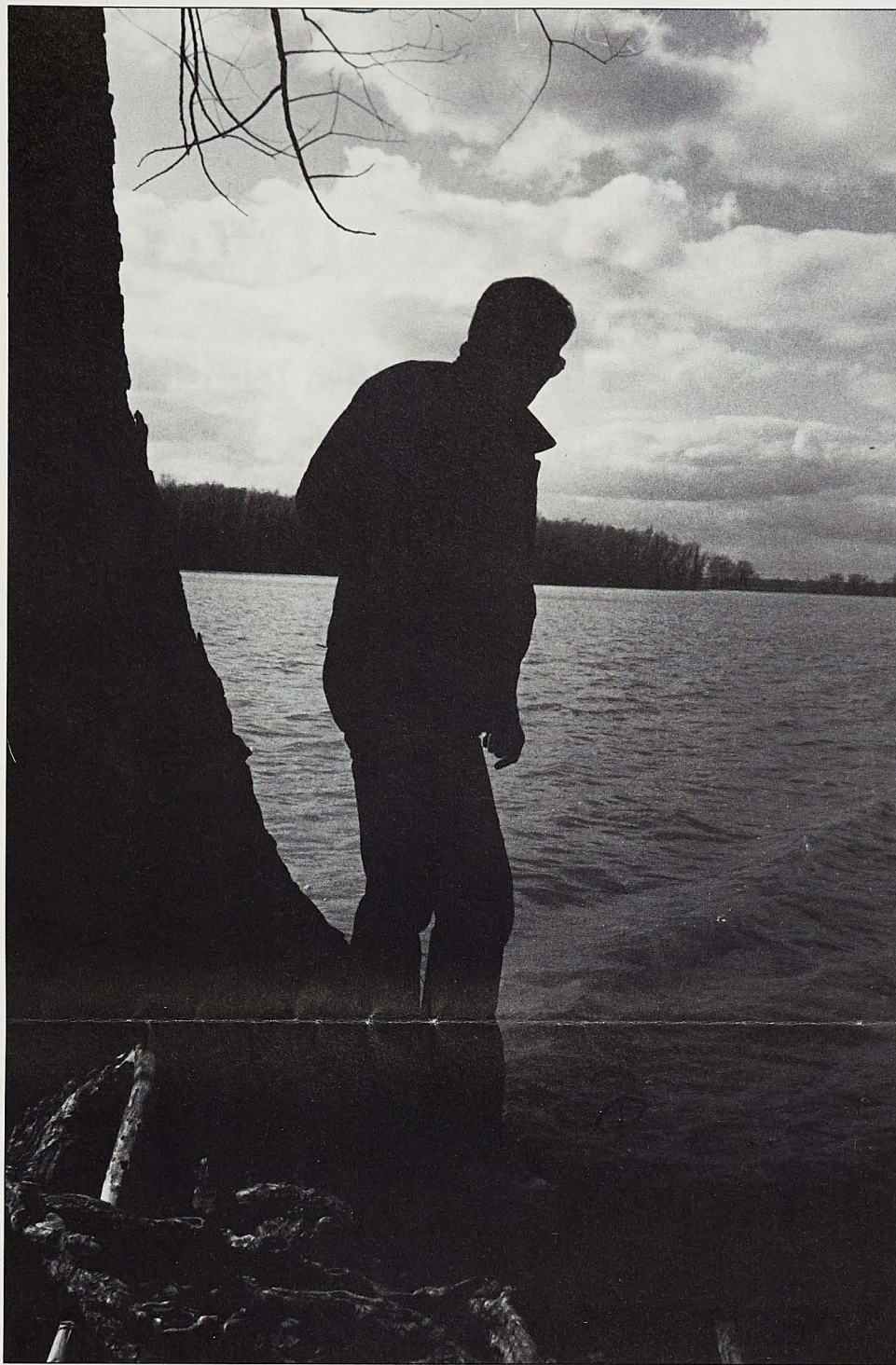


Karen Minshall's photography is something we can appreciate and understand.

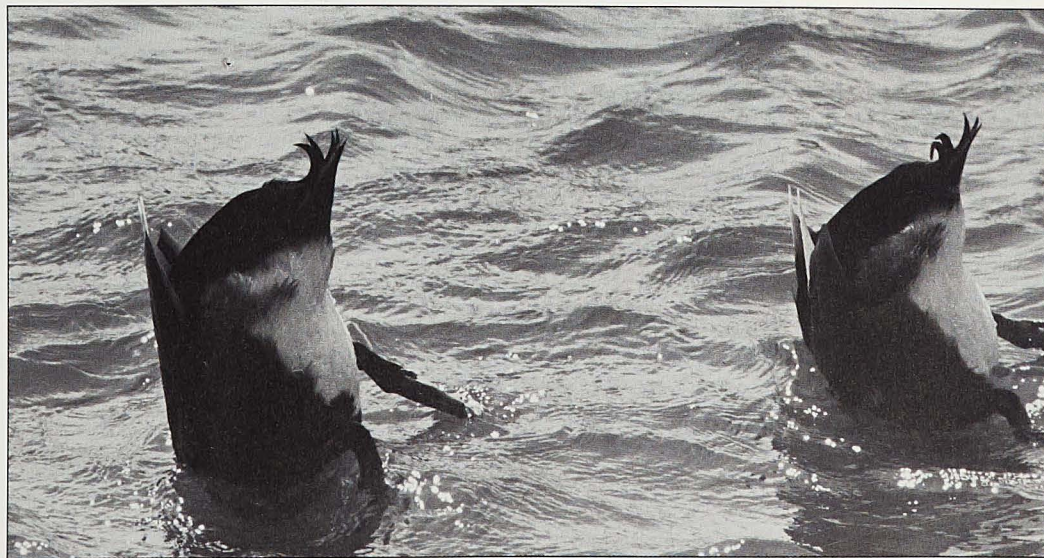
Minshall is a graduate of Fontbonne College, receiving a degree in art. Photography and ceramics are two mediums Minshall enjoys. Her work was on display at the Fontbonne Library Gallery Thesis Show, May 1988.

aph Everyday Life

Karen all '89 BA



Karen Minshall
something an appre-
and under
Minshall graduate
ntbonne Receiving a
e in art. Ph.D. and
ics are the diums
hall enjoys her work
n display in tbonne
y Gallery thesis
May 198



Alumni Profile: Mary Dean Alcorn Keyes '70

Twenty Years at 1843 Kennett Place

by Jessica Johnson

One hundred and forty years ago, Lafayette Square was at its height of social prestige in the Mississippi Valley. The exclusive residential area that grew up around St. Louis' first park, had materialized from the vision of a small group of the city's leading citizens.

In the late 1800s, Lafayette Square was the social mecca of St. Louis. The splendid mansions and townhouses of the Square provided the backdrop for a lavish and cosmopolitan way of life. Daytime park activities included the wealthy playing cricket and lacrosse and the lower classes forming baseball teams. (The first organized games of baseball in St. Louis were played in Lafayette Park.) There were concerts in the Music Pavilion on Wednesday afternoons and the "genteel" ladies of the Square could be found aboard the elegant boats in Swan Lake.

This fashionable lifestyle only flourished for a few decades. The many of the original settlers in the Square moved to other areas in St. Louis (like the Central West End and Compton Heights) because the popularity of the park was a nuisance and impinged on their privacy. The 1896 tornado, the opening of boarding houses and the Depression all contributed to the decline and deterioration of Lafayette Square.

However, in 1969, a few pioneers rediscovered the Square with a vision to rebuild and restore what had been lost. Two of those pioneers were Fontbonne alumnae, Mary Dean Alcorn Keyes '70 and her husband, Bill. When the Keyes moved into the area it was written off as a neighborhood. However, in the twenty years they have been in Lafayette Square, it has turned itself around. The Keyes are part of the Square's history.

The rise, the fall and the rebirth of Lafayette Square.

In 1836, 30 acres on a portion of the original St. Louis Commons was set aside by the city of St. Louis for public use. The city's first park was originally called the "Public Parade Ground," and was used for weekly cavalry maneuvers by the St. Louis Guard commanded by Colonel Thornton Grimsley. St. Louis Mayor John F. Darby's only concern was that the ground be reserved forever for the use of the people of St. Louis.

The park was formally dedicated No-



1843 Kennett Place. The house was built in 1893 on a corner lot. The architectural style is German Baroque.

ember 12, 1851, under the name of "Lafayette Square" in honor of the French General Marquis de Lafayette. During the Revolutionary War, Lafayette served as a volunteer in the Continental Army and his visit to St. Louis in 1825 endeared him to the city with its French origins.

In 1854, Lafayette Square was renamed Lafayette Park. Other than the Colonel's drills, there was very little activity in the park in the early years of the Civil War. A permanent park superintendent was appointed in 1864 and the it was gradually turned into the city's finest recreation park.

MG. Kern was the first official superintendent and over the years he contoured the land, created lakes, fountains, constructed flower beds and planted thousands of trees of all varieties. Nearly 40,000 people witnessed the unveiling of Harriet Hosmer's statue of Senator Thomas Hart Benton in Lafayette Park, in 1868. In the following year, the bronze cast of Jean Antoine Houdon's *George Washington* was placed in the park.

The Music Pavilion was constructed and weekly concerts were given during the summer. A police station (now a museum) was erected at the park's southeast corner. In 1869, thanks to bond issue funds, the iron fence that still surrounds the park, was completed.

Residential construction was also slow getting started. Although the first lots of the Square were sold in 1836 and 37, the financial panic of 1837 crippled the development on the south side of the park.

The streets that surrounded the park were 120 feet wide and the vision was to create America's largest residential square with the lots around the park. The north side was particularly desirable because of the broad vista across the Mill Creek Valley. These were country homes and the first to be built was in 1838 by William M. Page.

Early buyers of the south side of the park were immigrants from Germany who later returned to their homeland — for economic or patriotic reasons — and defaulted on their parcels. This land was tied up in litigation for more than ten years. Ensuing court decisions enabled Archibald Gamble; his future son-in-law, Charles Gibson; Edward Bredell and David Nicholson to acquire the park's south frontage in 1850.

The *St. Louis Republican* in 1859 declared Lafayette Square as "every dwelling...is a model of tasty architecture and every yard is a charming grove." By 1860 the south side of Lafayette Square consisted of the estates built by Gamble, Gibson, Bredell and Nicholson. Their lovely Italianate mansions were considered to be among the finest and most expensive in the Mississippi Valley.

Development of the east side of the Square began after 1858 through the efforts of Stephen D. Barlow and Socrates Newman. (Barlow was the developer of Kennett Place

which is near the center of the park's frontage along Mississippi Avenue.)

Sales of west land occurred after 1856, however that area did not build up until 1880.

Lafayette Square reached the zenith of its development as an exclusive residential district by 1890. Its stately homes with extensively manicured gardens were renowned throughout the country.

Unfortunately, Lafayette Square lost its standing as the most fashionable residential area in St. Louis when the devastating blow of the "Great Cyclone of 1896" demolished the neighborhood. The catastrophe hastened the inevitable.

Prediction of impending doom engulfed St. Louis. The Reverend Irl R. Hicks predicted the tornado a month before it swept through the city. On May 27, 1896, at approximately 5 p.m., a funnel cloud struck the Poorhouse on Arsenal, then touched down in Tower Grove Park, moved on to Compton Heights and then to the Square. The tornado demolished 60 years of work in Lafayette Square and broke the hearts and spirit of those living in the Square.

Considerable reconstruction followed and the area retained some of its former glory. However, during World War I and the Depression of 1930, the stately, old homes of Lafayette Square were converted into rooming houses.

Efforts to protect the Square with St. Louis' first zoning ordinance in 1918 failed. The Missouri Supreme Court ruled, in 1923, that the Lafayette Square zoning ordinance of restricting the property around the park to only residential use as unconstitutional. Commercial interest began to encroach on the park's surroundings and the exodus of families was speeded.

The 1947 Comprehensive City Plan for St. Louis classified the area as "blighted," a state of things only "complete reconstruction of the neighborhood into super residential blocks" could remedy. In 1951, it was announced that major highway construction would probably go through Lafayette Square, however the exact location was unknown.

By the end of the 1960s, the population of the Square fell from 12,500 in 1950 to 4,500. The few residents in the area were so dispirited that the neighborhood association welcomed the prospective highway. Prices had



On the second floor, the master bedroom.

fallen as low as \$1,000 for a 16-room mansion. However, while St. Louis wrote off Lafayette Square, there was a glimmer of hope flickering.

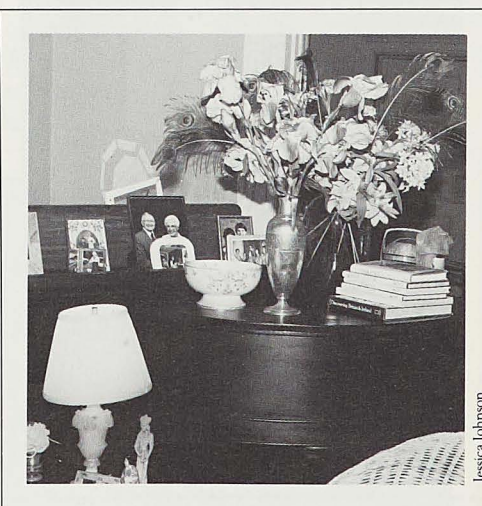
Timothy G. Conley, author of *Lafayette Square: An Urban Renaissance*, says John Albany Bryan is primarily responsible for "keeping the potential restoration of Lafayette Square alive."

Bryan lived in a townhouse on Benton Place during the Depression years and had seen the Square at its worst. He hoped to awaken the spirit of Lafayette Square, so in 1969, he published a booklet on the history and heritage of the area.

By the spring of that year, several young couples had purchased and began to restore some of the neglected and abused homes. The restoration of the historic Lafayette Square was not just an optimistic glimmer — it was now another chapter to add to the intriguing history of the Square.



The Keyes family: (l to r) Bill, Amy, Dean and Sheri.



The piano in the living room.

Two courageous pioneers who helped turn the tide of decay in the Square were Fontbonne alumnae, Mary Dean Alcorn Keyes '70 and her husband, Bill. Dean was a senior at Fontbonne College, in the home economics department and accepted a tutoring position in the city of St. Louis. Dean's assignment was to teach sewing to students at the Holy Guardian Angels Settlement House every Saturday morning.

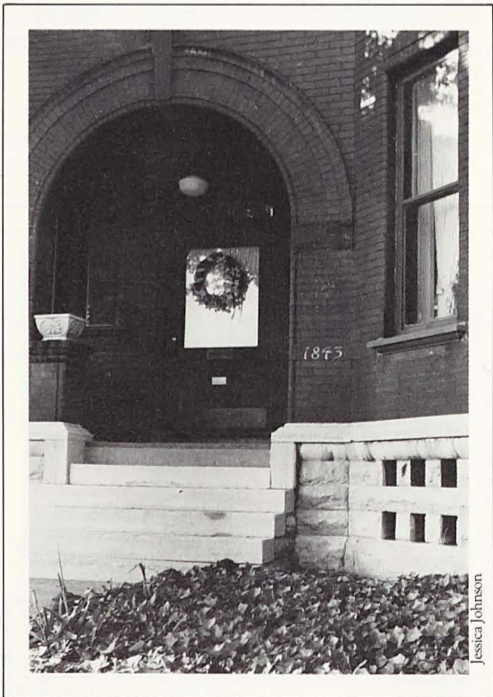
One morning, while driving down Park Avenue to the settlement house, Dean noticed the "decayed elegance" of Lafayette Square. "I was intrigued with the architecture of the stately houses and also shocked by the broken windows, vacancies and the neglect," says Dean. "A few weeks after discovering the Square, I read an article in the *St. Louis Post-Dispatch's Sunday Magazine* about the families that were moving into the area."

The Keyes took a closer look and found the house they wanted to buy. "I guess moving into the Square was an extension of being a product of the 60s," explains Dean.

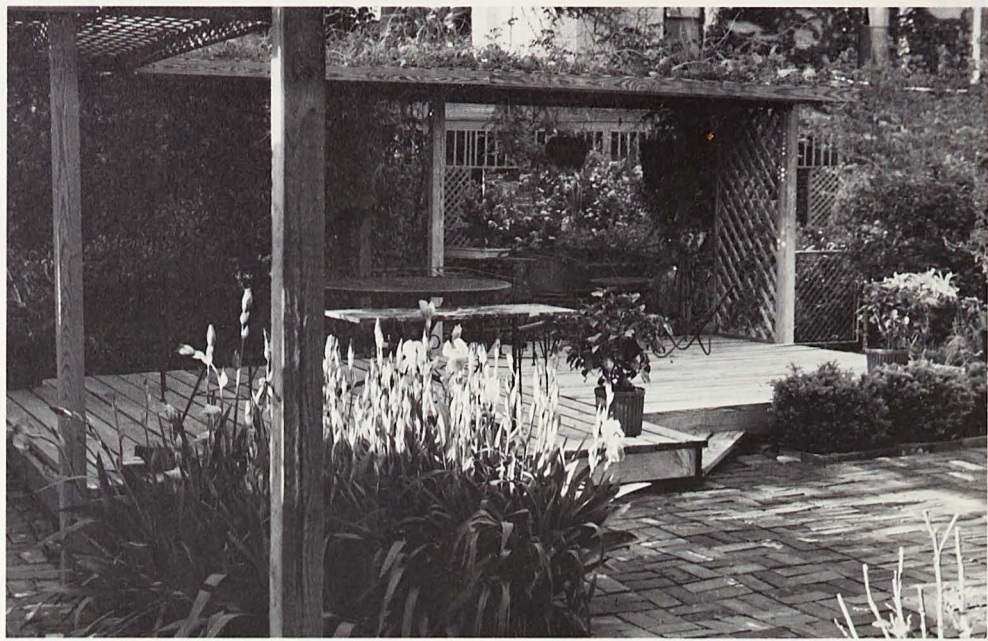
Bill's father was in the construction business and came to St. Louis to look at the house his son and daughter-in-law wanted to buy. According to Dean, "He came here to talk us out of buying the house. But after he inspected the neglected and abused house, he couldn't find any structural flaws."

The German Baroque style home, was built on a corner lot on Kennett Place, in 1893, which is late for the area. (At that time corner lots were undesirable.) Gustav A. Finkelnberg, an attorney, United States District Court Judge, and a unsuccessful, Republican candidate for Missouri governor, built the house for his second wife. This solidly, built house was untouched by the 1896 tornado. In 1912, Finkelnberg moved to the Central West End.

In May 1970, Dean and Bill Keyes purchased the house at 1843 Kennett Place for \$8,000. This was the same month and year



The arched entryway to 1843 Kennett Place.



Two views of the Keyes' spacious backyard.



Dean graduated from Fontbonne College. (Bill was an engineer for St. Louis City at that time.)

For the first three years, the Keyes lived on the second floor of the house. They had no kitchen and used an electric frying pan for cooking. Unlike many of the houses on the Square, 1843 Kennett was not stripped of its woodwork and fireplaces, however the Keyes had to install a new plumbing system, new electrical wiring and fixtures. "We have put in ten times the amount of money we paid for the house into restoring and enhancing it," comments Dean. "And we are still working on the house."

Handsomely decorated, the house is filled with antiques. The staircase in the foyer is the real show piece of the house. There are three floors and two staircases in the house, typical of most of the Lafayette Square homes. The first floor consists of the foyer, living and dining rooms, kitchen and bathroom. The master bedroom, master bath, family room and dressing room make up the second floor. The Keyes daughters, Amy and Sheri, have their own living space on the third floor.

In the backyard, irises of many varieties are in constant bloom and offer a wonderful contrast of color. There is a large deck off the right side of the kitchen and an inviting patio, in the back of the beautifully landscaped yard. "We practically live out here in the summer," says Dean.

When the Keyes moved into Lafayette Square, there were only five other families living in the area. Of those original pioneers, the Keyes are the only family still in the Square.

"Lafayette Square has seen a lot of changes throughout its history. When we first moved in to the area, the neighborhood was written off. It was difficult to obtain mortgages on the homes because no St. Louis bank would consider residential mortgages east of Kingshighway. The residents of the area had to circle the wagons and protect themselves," says Dean.

"The residents formally organized the Lafayette Square Restoration Committee to help preserve the Square's architectural heritage. To generate interest and help promote the sale of houses, the LSRC sponsored the Lafayette House and Garden Tours in June 1970.

"In 1972, Lafayette Square was the first residential area in St. Louis' to be declared a historical district. Now the properties are protected and no building can be demolished without special permission. This also helps maintain the neighborhood and preserves the historic value."

Today, Lafayette Square is one of the only walking Victorian neighborhood in the country. June 1989, marked the Twentieth Year of the Lafayette House and Garden Tour and the Keyes have been a part of each one. ♦

Six to Re Awards

Five alumnae will be honored at the Day Dinner, City Club, St. Louis.

At their Fontbonne Board report submitted to the Committee on

Those distinguished service award recipients, '63, for health

Alice Daues, Rosemary DeAnn Dulle '73, and

family. Donald community leader, Louis civic and

Persons v Founders' Day contacting the College, 6800 63105. Or call 889-1403.

Call For

Nominations for graduates and are being solicited for Awards. Dear

include a brief statement and the two references. Fontbonne College, St. Louis, MO

Delta Mu Officers

Joy Probst, president of the Fontbonne Delta Mu Theta

are Tina Jones, Patricia Clark, Brune Bishop, CSJ, is moder

An office held in St. Charles on the DMT

tea, November announced; meet Fine Arts; and Ryan Hall Ch

April 22, 2 p.m.

alumni update

Six to Receive Founders' Day Awards

Five alumni and a St. Louis community leader will be honored at the fourth Founders' Day Dinner, October 19, 1989, at the University Club, St. Louis, Missouri.

At their meeting on May 11, the Fontbonne Board of Trustees approved the report submitted by the nine-member College Committee on Founders' Day Awards.

Those alumni to be honored for distinguished service are **Roseanne Cooke, CSJ '63**, for health care to the poor; **Margaret Alice Daues, CSJ '61**, for church leadership; **Rosemary Denson '69**, for law; **Catherine Ann Dulle '73**, for business and administration; and **Mary Jane Helm King '39**, for family.

Donald Gunn Jr., will be honored for his community leadership and service in the St. Louis civic and Catholic community.

Persons who wish invitations to the Founders' Day Dinner may request them by contacting the Alumni Office, Fontbonne College, 6800 Wydown Blvd., St. Louis, MO 63105. Or call the Alumni Office, (314) 889-1403.

Call For Nominations

Nominations of Fontbonne College graduates and of St. Louis community leaders are being solicited for the 1990 Founders' Day Awards. **Deadline: February 15, 1990.** Include a brief statement to support the nomination and the names and addresses of at least two references. Send to the Alumni Office, Fontbonne College, 6800 Wydown Blvd., St. Louis, MO 63105.

Delta Mu Theta Elects Officers

Joy Prost Coerver '50 will preside as president of the Fontbonne Epsilon Chapter, Delta Mu Theta, for 1989-90. Other officers are Tina Jones Daniels '80, vice president; Patricia Clark '67, secretary; and Charlotte Brune Bishop '78, treasurer. Mary Gaydos, CSJ, is moderator.

An officers' meeting/luncheon will be held in St. Charles, August 26. Other events on the DMT calendar include: meeting and tea, November 12 at 1 p.m., place to be announced; meeting, January 14, 1990, 2 p.m., Fine Arts; induction, March 31, 4:30 p.m., Ryan Hall Chapel; DMT alumni concert, April 22, 2 p.m., Fine Arts.

Fontbonne Homecoming/ Reunion '89

Homecoming/Reunion weekend, September 22-24, 1989, will feature activities and programs designed to appeal to a variety of Fontbonne constituencies. Unless indicated, all events are open to alumni, students, parents, faculty and staff.

Friday, September 22

Open House: Academic departments 4-5 p.m.
Education/Special Education: A Banner Night! 4-6 p.m.
Reception/Happy Hour 5:15-6 p.m.
Dinner 6-7:30 p.m.
Magic show and comedy hour in the Cafe 8-10:30 p.m.

Saturday, September 23

Alumni Mass, Ryan Hall Chapel 10 a.m.
Alumni Brunch, Ryan Hall Dining room 11 a.m.
Alumni Meeting 12:30 p.m.
Soccer game, Fontbonne vs. Columbia 1 p.m.
Department of Home Economics Alumni Reception 2-3:30 p.m. (Fontbonne College Library Foyer)
Free time: you are invited to play volleyball, swim, visit the Fontbonne Library Art Gallery exhibit.
Homecoming Dance. The students of Fontbonne extend a special invitation to the alumni to attend the dance. 9 p.m.-1 a.m.
Five-year reunion for "9" and "4" classes tba

Sunday, September 24

All-college Mass. Ryan Chapel 10 a.m.
Brunch for 50-year (1939) class and spouses 11 a.m.
Brunch for parents, students 11 a.m.
Balloon lift-off Noon

The Homecoming Weekend fees for alumni, \$20 per person; parents, \$10 per person; and students pay for events attended (if there is a fee).

1964 Class To Hold Reunion

Class reunions will get underway on July 29 when the class of 1964 holds its 25th anniversary with two events.

Mary Rose Enderlin LaMear will host a pool party and luncheon at her south county home, St. Louis, Missouri. In the evening the class will meet for dinner at Sunset 44 Restaurant, Lindbergh and Watson Road, St. Louis.

Committee members who organized the events are Mary Rose Enderlin LaMear, Karen Jungewalter Thaman, Betsy Vernile Scherz, Mary Lou Meyer Lenkman, Mary Beth Olyniec Westhoff, and Julie Lamm Blow.

For further information, contact LaMear (314) 892-7697 or Thaman (314) 966-6316.

Chicago-Area Alumni Meet

Eleven Chicago-area alumni met for a luncheon in Club 21, Stouffer Oak Brook Hotel, Chicago, on May 6. Lorie Bremmer McGrath '68 organized the get-together.

The alumni who attended were Mary Lochirco Boehm '58, Christine A. Brenton '87, Mary McKee Colbert '57, Rosalie Millman Efken '56, Lorie Bremmer McGrath '68, Mary Elizabeth Paul '64, Jane Boeckmann Riley '70, Marie Sack Grassmuck '39, Alice E. Harper '70, Phillis Goedert Wilson '65 and Marion Stein Servos '52.

Marie Damien Adams, CSJ, former Fontbonne vice president for academic affairs and dean, and Stephanie Stueber, CSJ, director of alumni relations, attended as Fontbonne representatives.

The 1989 Alumni Fashion Show and Luncheon was at the Junior League. Fashions were by Helen Wolff.



Alumni Notes

1950's

Bernadette Teasdale, SCL '55, is coordinator of Contemplative Outreach, Spirit of Christ Church, Arvada, Co.

1960's

Mara M. Baun '63 is president of Midwest Nursing Research Society, the largest nursing research society in the United States.

Donna Cigno Joy '69 received her Ed. D. degree from Vanderbilt University Nashville, Tenn., in May 1989. Her dissertation is entitled "A Study of Social Agreement in Effective Secondary Schools." Joy holds a master's degree from Cardinal Stritch College and a master's from Northwestern Illinois. She is a school administrator in Oak Park, Ill.

The Louisiana Bar Journal, April 1989, contains a feature on **Inez F. Kerth '65**, who is recognized for her volunteer work with the New Orleans Pro Bono Project. Kerth, an attorney in Hanahan, La., received her law degree from the University of New Orleans in 1975.

Mary J. McNamee '66 completed the doctoral program in educational administration and foundations at Illinois State University, Normal, and is an associate professor of medical-surgical nursing at Menonite College of Nursing, Bloomington, Ill.

Mary Dee Montie Reitz '64 was named "Woman of the Year," St. Alexander's Council of Catholic Women, Elmhurst, Ill.

Michelle (Carol) Putnam Tallent '63 is the president of Tallent and Associates, a company that recruits executives on a nationwide basis in telecommunications and data communications.

1970's

Lorene Singleton Edwards '74, Dierberg's test kitchen director, and **Barbara Sallwasser Redenhour '73**, director of consumer affairs with the St. Louis based Dierberg's, collaborated to produce "Eat Hearty Cookbook", which feature healthy recipes with reduced fat and cholesterol.

In the 50th Fontbonne Music Festival, March 4-19, 1989, 20 Fontbonne alumni music majors entered students in the auditions. **Linda Lakebrink Kelly '75**, **Laura Schindler '70**, and **Christine Austermann Palton '82** had students who performed in the final Festival concerts, March 19.

Mary Dean Alcorn Keyes '70 is vice president and director of community affairs, Citicorp, St. Louis, Mo.

Donna Crudo Lewis '71 is a consultant/learning disabilities, New Jersey Department of Human Services, Office of Education Central Headquarters. She is member of a birthing team at Family Born, a center for natural child birth, Princeton, NJ.

Vincent S. Lipe '79 is the administrative assistant to the director of marketing and sales, at TWO DOWNTOWN, INC., Seattle, Wa.

We'll publish your news!

DEAR ALUMNI AND PARENTS:

If the address shown on the Fontbonne College Magazine label has changed or will change, please send us the label along with the new information below.

We want to hear your news. All submissions to Alumni Notes are edited for style and brevity.

SEND YOUR NEWS UPDATE OR LABEL CORRECTION TO: Office of Alumni Relations, Fontbonne College, 6800 Wydown Blvd., St. Louis, MO, 63105

Name _____ Class Years _____

Title Dr. Mr. Ms. Miss Mrs. Rev.

Status Single Married Divorced Widowed

Spouse _____ Class Years _____

New Address _____

City _____ State _____ Zip _____

Home Phone _____ Business Phone _____

My firm, employer, or professional specialty _____

Please include this news item _____

Today's date _____

I have continued on a separate sheet.

Because of space and deadline constraints, some alumni notes already submitted will appear in the next issue. Thank you for your news. We love to hear from you.

Janice M. Wickenhauser '71, Germania Bank senior vice president of human resources and administration, has been promoted to executive vice president.

Debra Wicks '75 is assistant professor in the department of speech communications, Iowa State University, Ames.

Malva W. Williams '71 is an elementary school counselor, St. Louis Board of Education, and proprietor of the Needle Threader, Ltd., that specializes in tailoring, fashion designing, dressmaking, alterations and sewing instructions.

1980's

Ellen Krodinger Bridgewater '85 is a licensed CPA with Stone, Carlie, and Co., Clayton, Mo.

Lisa R. DeStefano '88 is personnel management specialist with Veteran Administration, St. Louis, Mo.

Sandra E. Duchon '81 is membership services director of the National Cosmetology Association. Duchon holds an MBA from Saint Louis University.

Donald Dulle, MBA '86, is assistant general manager at the Illinois Distributing Company, Belleville.

William R. Heft '86 is a mortgage loan consultant, Savings of America. Heft recently won a trip to Florida for outstanding sales performance.

Karen Frank Lindner, BFA '85, completed post graduate study at Kansas City Art Institute in December '88 and is selling work on consignment through Crafts Incredible Gallery, Prairie Village, Kan. Lindner is an active member of the Kansas City Clay Guild and the Kansas City Artists Coalition. In March 1989, she had ceramic pottery included in the "Crossroads Clay," a nine-state juried exhibition in the Kansas City Artists Coalition.

Sharon Farmer Schmidtke is an adolescent psychiatric teacher at Methodist Medical Center's adolescent mental health care unit for Peoria, Ill., public schools.

Mary Lee McKelvey Underwood '88 is on the retail staff at I. Magnin, Chicago, Ill.

Deaths

The Fontbonne College Alumni Association expresses sympathy to the families of the following alumni who died: **Bernice Podjesh Davidson '47**; **Catherine E. Gaffney '85**; **Lorraine Korte Gartner '36**; **Alice Ryan Lang '44**; **Jane Almon Layton '53**; **Grace Carroll Mattingly '31**; **Mary E. Neill Moran '43**; **Mary Eda McCarthy, SSND '39**; **Jane McEvelly '32**; **Lafaye Brown Newson '80**; **Jane O'Connell Pennell '38**; **Dorothy Hogan Smith '33**; **Carol Weiss Spies '42**; **Frances Moran Walther '32**; **Genevieve Harris Kealy '33**; **Helen Scheu Oates '39**.

The Alumni Association also expresses sympathy to the following alumni on the death of an immediate relative: **Mary M. Henning '88** (father); **JoAnn Smith Henry '56** (brother, James); **Mary Wand Hentrich '40** and **Mary Jon Hentrich Girard '68** (husband and father, respectively); **Carmelita Schmelig Kenney '52** (mother); **Keith Mosier '82** (mother); **Colette Crowley O'Brien '65** and **Mary Anne Crowley Baglier '68** (father); **Mary C. Steuterman '73** (mother); **Barbara Krausel Wick '60** (mother); **Linda Laury Husson '69** (father).

1989-90 Alumni Calendar Events

1989

Monday, September 18
Executive Board Meeting
Library Board Room 7:30 p.m.

Friday, September 22-24
Homecoming/Reunion Weekend 1989

October 15-21
Founders' Week

Sunday, October 15
Founders' Day Mass
Ryan Hall Chapel 11 a.m.
(Followed by coffee and rolls)

Thursday, October 19
Founders' Day Dinner
University Club

Thursday, November 2
Feast of All Souls
Mass for deceased members of the
Fontbonne College Community.
Ryan Hall Chapel 7:30 p.m.
(Dessert reception to follow)

Thursday, November 9
Alumni Affordable Auction
AMC 7-10 p.m.

Monday, November 13
Executive Board Meeting
Library Board Room 7:30 p.m.

1990

Monday, February 12
Executive Board Meeting
Library Board Room 7:30 p.m.

Friday, February 16
Alumni Basketball Night
Concordia Gym.
Women's game 6 p.m. Men's game 7 p.m.

Sunday, February 18 or 25
Concert and buffet
Private Home in Brentmore Park (tba)

Thursday, March 8
Breakfast and Speaker
Clayton Hotel (tba)
8-9:30 a.m.

Wednesday, March 21
Carondelet Day of Prayer
9:30 a.m. - 3 p.m.

Saturday, March 31
Rhinestones and Roulette II
7-10:30 p.m.

Monday, April 9
Executive Board Meeting
Library Board Room 7:30 p.m.

Wednesday, April 25
Luncheon/Fashion Show

Sunday, April 29
Carondelet Liturgy
9:30 a.m. Brunch to follow.

Monday, June 11
Executive Board Meeting
Library Board Room 7:30 p.m.

Rhinestones & Roulette 1989



Richard Finke

Kathy Lee rolls the dices at the craps table.



Richard Finke

Agnes Cecile Hickox, CSJ and Rose Genevieve Downs, CSJ, place bets at the over and under game.



Richard Finke

Sean Peters explains her game to Mary Lee Rodegast Harmon and Marie Charles Buford, CSJ while Roy Griesdieck supervises.



Richard Finke

Wayne Jones, blackjack dealer, asks, "You want a hit or are you staying?"

1989 Fall Fontbonne College Events Calendar

Critical Global Issues Center

Satanic Cults
September 6

Health Fair
October 18
(co-sponsored with the Department of Home Economics and the Student Government Association)

Homelessness
November 15
For more information call 862-3456 ext. 229

Art Gallery

Charles Qingmin Meng
Ernest W. Stix Jr.
Paintings
September 6-27
Reception September 10, 3-5 p.m.

Art Faculty Exhibition
Sculpture
October 1-25
Reception October 1 3-5 p.m.

Wade Thompson
Paintings
October 29-November 21
Reception October 29 3-5 p.m.

Donna Phipps Stout
Paintings
Anne Chase Martin
Sculpture
November 29-December 20
Reception December 3 3-5 p.m.

The Library Ary Gallery hours are:
Monday-Thursday 8 a.m.-10 p.m.
Friday 8 a.m.-5 p.m.
Saturday 11:30 a.m.-3:30 p.m.
Sunday 2 p.m.-10 p.m.

For more information call 889-1425.

Student Government Association

Back to School Dance
September 8
9 p.m.-1 a.m.

Homecoming Week
Events in conjunction with Alumni
September 20-24

Cardinal Baseball Night
September 29

Blood Drive
October 11
11 a.m.-3 p.m.

Halloween Dance
October 27
9 p.m.-1 a.m.

Late Night With Lee McKinney
November 3

Christmas Ball
December 3
9 p.m.-1 a.m.

For more information call 889-1411.

Continuing Education

Chaykin CPA Review
August 1989
For CPA candidates who will take the November 1989 CPA exam.

Conversational French for Children
September 16-
November 18
9-10:30 a.m.
(September 14-
November 16
4:30-6 p.m. alternate days)
\$100

Conversational Spanish for Children
September 16-
November 18
9-10:30 a.m.
\$100

Writing to Sell
September 19-October 24,
(Tuesdays)
7-9 p.m.
\$60

Appleworks for Educators and Administrators
(part 1 of 5 part series)
September 20
5-10 p.m.

Do-It-Yourself Financial Planning
September 25-October 23,
(Mondays)
7:30-9 p.m.
\$15

Playing By Ear
October 3, (Tuesdays)
7-9 p.m.
\$60

Pop Music Through the Years
October 5, (Thursdays)
7-9 p.m.
\$100

Appleworks for Educators and Administrators
(part 2 of 5 part series)
October 4
5-10 p.m.

Sell More, Sell More Easily
October 4, 11, 18
7-8:30 p.m.
\$50

Elderhostel
October 15-21
(Theme: The Gateway to the West; False Faces and Bear Mother; Mark Twain-T.S. Eliot and the Mississippi River) \$235 for out-of-town participants and \$150 for local commuters

Appleworks for Educators and Administrators
(part 3 of 5 part series)
October 18
5-10 p.m.

Appleworks for Educators and Administrators
(part 4 of 5 part series)
October 25
7-9 p.m.

Appleworks for Educators and Administrators
(part 5 of 5 part series)
November 4
9 a.m.-3 p.m.

For more information call 889-1409.

English Department

Poetry Reading by Jason Sommer
Fontbonne College's Poet-in-Residence
November 10
7:30 p.m.

For more information call 889-1402.

Music Department

Intermezzo Recital
October 16
11:30 a.m.
Recital Room

Entr'acte Recital
(Elderhostel)
October 17
Recital Room

Fontbonne Concert Series
October 29
8 p.m.
Theatre

Noontime Recital
October 30
11:30 a.m.
Recital Room

Delta Mu Theta
November 12
1 p.m.

Noontime Recital
November 20
11:30 a.m.
Recital Room

Choral Concert
December 7
8 p.m.
Ryan Chapel

All music events are free of charge except for the Fontbonne Concert Series. For more information call 889-1425.

Theatre Productions

Medea, freely adapted from the "Medea" of Euripides, by Robinson Jeffers.
October 20, 21, 22, 27, 28
8 p.m.

Children's Show
November 28, 30
11 a.m.
November 29
11 a.m. and 1 p.m.

Children's Show
December 1
11 a.m. and 1 p.m.
December 2
1 p.m.

Home Economics Department

SHEA Ice Cream Social
September 18
11:30 a.m.-12:20 p.m.
AMC

SHEA Halloween Bake Sale
October 30
11:30 a.m.-1 p.m.
Ryan Hall

Home Economics Department/SHEA Christmas Social
December 4
11:30 a.m.-12:20 p.m.
Science 316

Fontbonne

Fontbonne College
6800 Wydown Boulevard
St. Louis, Missouri 63105-3098

Address Correction Requested

FONTBONNE
m a g a z i n e

Summer 1989

Non-Profit Organization
U.S. Postage
PAID
St. Louis, Missouri
Permit No. 1768