

# FONTBONNE

COLLEGE

# m a g a z i n e

Fall 1989



ball  
e  
7:30  
od  
7:30  
8:00  
aptist  
7:30  
ve State  
7:30  
llege  
7:30  
aGrange  
7:30  
7:30  
er  
7:30  
ve State  
8:00  
College  
7:30  
d  
7:30  
etball  
ods  
7:30  
e  
7:30  
d  
6:00  
State  
6:00  
1:00  
7:00  
played at  
nary. All  
nless  
mes appear

Profit Organization  
U.S. Postage  
PAID  
St. Louis, Missouri  
Permit No. 1768





# OPENERS

## FONTBONNE COLLEGE m a g a z i n e

Fall 1989

**In This Issue**

Opener ..... page 2  
 Fontbonne College—A Tradition of Service ..... page 4  
 Honor Roll 1988-89 ..... page 6  
 Photo Spread, Alfonso Lee ..... page 8  
 Alumni Update ..... page 14  
 Calendar of Sports Events ..... page 16

**Cover Photo**

A high contrast print of Ryan Hall, the administration building at Fontbonne College.

The Fontbonne College Magazine is published by the Department of Institutional Advancement, Fontbonne College, 6800 Wydown Blvd., St. Louis, Mo. 63105, 314-889-1402.

Fontbonne College President, **Meneve Dunham**  
 Vice President for Institutional Advancement, **Tom Yahraes**  
 Director of Alumni Relations, **Stephanie Stueber, CSJ**  
 Director of Public Relations and Publications, **Jessica Johnson**

Third class postage paid, Clayton, Mo. The Magazine is sent to alumni and friends of Fontbonne College. Copyright 1989.

Fontbonne College does not discriminate on the basis of race, color, religion, age, sex, national or ethnic origin, or handicap in the administration of its educational policies, admissions policies, scholarship and loan programs, and athletic and other school administered programs.

**Staff**

Editor ..... **Jessica Johnson**,  
 Director of Public Relations  
 and Publications  
 Writers ..... **Jessica Johnson**  
**Susan King**,  
 Media Coordinator and Writer,  
 Public Relations  
 Photographers ..... **Jessica Johnson**  
**Susan King**



### Fontbonne International

Educational enrichment with the excitement of travel.

Fontbonne College expands its St. Louis campus world-wide with a special educational travel program.

A once-a-decade chance to travel to Oberammergau, West Germany for the world renowned Passion Play, including Austria, Switzerland and Rhine/Danube River cruises,  
**June 6-20, 1990.**

Price from St. Louis: \$2265.  
 (Includes round-trip airfare, lodging, and most meals.)

For brochure contact:  
 Fontbonne College  
 Institutional Advancement  
 6800 Wydown Blvd.  
 St. Louis, Missouri 63105  
 (314) 889-1412

### Full-Time Enrollment For Fall 1989 Is Over The Projections



Gary Zack, vice-president of enrollment and student services, prepares new and transfer students for the fall semester at orientation. "The number of full-time students and FTE's are over our projections," says Zack. "That's encouraging. With more full-time students, the Fontbonne campus life is enhanced."



With advice from Cheryl Baugh, communication/public relations instructor, Sheng-Pin "Tony" Wu registers for classes.





Jessica Johnson

George Graff, co-chair of the tournament, shows his foursome the perfect form.

## Fontbonne's First Annual Golf Tournament Is A Success



Jessica Johnson

Golfers await the shotgun start of Fontbonne College's First Annual Golf Tournament. The tournament raised \$12,000 for the Fontbonne College Scholarship Fund.

### Support The Campaign Through Travel

A support program for **The Campaign For Fontbonne** has been initiated by Norval and Janice Wallace through their travel agency: Travel Agents International. Travelers who support **The Campaign** and book through the agency will receive a coupon for each \$100 of travel booked and completed. These coupons are redeemable for cash, payable to Fontbonne College. In order for Fontbonne to receive these funds, travelers must identify themselves as supporting **The Campaign** and they must send their coupons to Fontbonne College, the Office for Institutional Advancement.

This offer is for business and personal leisure travel of all kinds; cruises, group tours, independent tours and other vacation travel. All Fontbonne employees, alumni, friends and business supporters may participate in this program. The agency is fully automated with access to all domestic and international air carriers, most hotels, car rental agencies and AMTRAK. The lowest airfare for your itinerary is guaranteed. Contact Travel Agents International.

### Tributes And Memorials; Another Way To Help Fontbonne

#### Tributes

Celebrate birthdays, anniversaries, weddings, births, graduations, etc., by making a tribute gift to Fontbonne College in honor of the person you are celebrating. Send check (payable to Fontbonne College) and the name and address of the person being celebrated to the Advancement Office, 6800 Wydown Blvd., St. Louis, MO 63105.

#### Memorials

Honor a deceased family member, friend, alumni by making a memorial gift to Fontbonne College. Send check (payable to Fontbonne College), the name of the person to be honored, and the name and address of the relative to whom an acknowledgement is to be sent. Address: Advancement Office, Fontbonne College, 6800 Wydown Blvd., St. Louis, MO 63105.

### Patrick Schuchard's Painting On Loan

In 1983, Associate Professor of Art, Pat Schuchard's painting "A Hunter's Lodge" was acquired by the Evansville Museum of Art and Science in Evansville, Ind. The oil painting was awarded the top prize in the museum's Mid-State Exhibition that year.

In August, 1989, Schuchard was notified that his painting had been selected for exhibition at the American Embassy in Singapore. The painting will be on a two-year loan to the embassy. The loan of the work is granted by the museum through a new State Department program called "Art in Embassies."

### IBM Employees/Spouses Can Turn \$5,000 Into \$30,000

International Business Machines (IBM) recently announced an expansion to its matching grants program to allow colleges to choose equipment instead cash.

Colleges that receive \$5,000 between May 16, 1989, and May 15 1990, from current or retired IBM employees and spouses will have the option to elect a five-to-one equipment grant. Schools that choose cash instead of equipment will receive the standard grant of two-to-one.

Fontbonne would like to contact all current and former IBM employees and spouses with Fontbonne ties to encourage their participation in this program. If Fontbonne's friends contribute at least \$5,000 they will increase that \$5,000 to \$30,000 by adding \$25,000 in computer equipment.

If you know any eligible IBM employees who may want to support Fontbonne in this special endeavor, please ask them to contact the matching grants officer at IBM or the Office of Institutional Advancement at Fontbonne.

### Mary Charity Dalton, CSJ, Leaves An Impressive Legacy

Mary Charity Dalton, CSJ, leaves Fontbonne with the enrollment of transfer students up 30 percent. She worked in the admissions office on transfer enrollment for three years. Before that, she spent twenty years in the communication arts department.

"Sister Mary Charity was not only an asset to the admissions office, but to the college as a whole," says Peggy Musen, director of admissions. "In terms of her contributions to the school, her knowledge and love of Fontbonne will always be remembered." We wish Sister Mary Charity continued success.



Susan King



# Fontbonne College—A Tradition of Service

## From the President



Jessica Johnson

Dear Friends:

In 1924, ground was broken in the field at Wydown and Big Bend Boulevards, and the foundation of Fontbonne College was laid. The five new buildings were constructed of rough hewn Missouri granite, whose strength is compared to the loyalty of Fontbonne students.

Sixty-five years later the loyalty of Fontbonne alumni and students is as strong as ever. The tradition of service continues.

As Fontbonne closes one fiscal year and prepares for the opening of academic year 1989-90, the Fontbonne College community is indeed grateful for its many blessings.

On May 13, 1989, 266 graduates joined the ranks of Fontbonne's distinguished alumni. This group of more than 7,000 individuals brings to our communities the values, competencies and service that derive from a Fontbonne education.

Fontbonne's outreach now includes the home campus in Clayton and branch campuses at

O'Fallon, Fenton and Wentzville. In addition, our faculty is teaching courses in the arts and sciences at the Deaconess College of Nursing. Fontbonne's service to the metropolitan St. Louis area continues to grow.

School spirit has risen significantly. Women's basketball and volleyball, and men's soccer are not the only sports at Fontbonne any more. Increased activity and visibility has accrued from the initiation of the Griffins men's intercollegiate basketball team. Recruitment began for the co-ed intercollegiate teams in golf and cross-country. This past summer, the application process to join NCAA Division III began.

Community awareness is also increasing through more special events such as the first annual Fontbonne College Mother's Day Run in which more than 300 walkers and runners participated. The first annual Fontbonne Golf Tournament was a success with 65 golfers and 18 hole sponsors that helped raise \$12,000 for the Fontbonne Scholarship Fund. Hopefully, in years to come the loyalty of Fontbonne's alumni and friends will make these events even more successful.

**THE CAMPAIGN FOR FONTBONNE** continues to progress. Pledges and contributions now total \$4,403,383 and **THE CAMPAIGN** is having a dramatic and exciting impact on Fontbonne College.

The endowed scholarships begun this year include the Southwestern Bell Foundation and Pulitzer Foundation scholarships for minority students, and the Virginia Guyol McShane Memorial Scholarship established by her brothers Frank and William Guyol and her sister Helen Guyol.

The Endowment For the Future, life insurance program is off to a wonderful start. Nine individuals are making contributions to pay for life insurance policies naming Fontbonne as the beneficiary. Donor

restrictions include endowments for the department of human environmental sciences (dietetics), scholarships, facility maintenance, natural sciences and math/computer science. The quality of academic facilities and equipment is being guaranteed for generations of Fontbonne students.

Capital renovation projects completed this summer are the research and development lab for the human environmental sciences department, two chemistry labs and a chemistry preparation room, an expanded and upgraded computer lab and the fine arts recital hall. Two floors of the Fine Arts Building have been refurbished and Medaille Hall has been carpeted and has two new lounges.

Fontbonne's students appreciate these improvements and our enrollment figures reflect it.

To you our Trustees, alumni, parents, friends, both individuals and members of the corporate and business sector, the Fontbonne College community expresses our heartfelt gratitude for financial support you provide to keep Fontbonne a vital, vibrant institution of higher education.

As Fontbonne begins its 65th year in Clayton, we are celebrating the heritage and tradition of the College and the Sisters of St. Joseph of Carondelet. Special events to which you will be invited are the granting of the Bezdek Award, established in honor of Sister John Joseph Bezdek, and the awarding of the first Outstanding Teaching Grant funded by the Sears Roebuck Foundation.

Thank you for all you do for Fontbonne. You are part of Fontbonne's tradition of service.

*Meneve Dunham*  
Meneve Dunham  
Fontbonne College President

## Honor Roll Pre-Audit Figures

REVENUES		Percent of Total
Tuition and Fees	\$ 4,600,171	76.5%
Private Gifts and Grants	323,779	5.4%
Government Grants	18,403	.4%
Other Income	272,690	4.5%
Auxiliary Services	794,134	13.2%
<b>TOTAL REVENUES</b>	<b>\$6,009,177</b>	

Number of Donors 1,894

EXPENDITURES		Percent of Total
Student Services	\$776,783	13.2%
Institutional Support	1,005,732	17.1%
Physical Plant	571,213	9.5%
Instruction	1,980,528	33.7%
Academic Support	280,989	4.8%
Student Aid	585,920	10.0%
Debt Services	27,482	.4%
Auxiliary Services	679,949	11.3%
<b>TOTAL EXPENDITURES</b>	<b>\$5,875,209</b>	
<b>REVENUE LESS EXPENSE</b>	<b>\$133,968</b>	

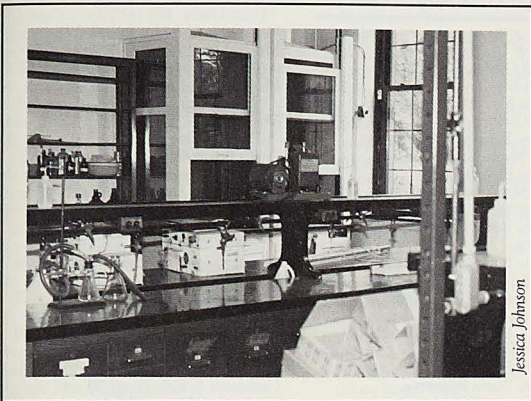
Annual and Capital Gift Income	88-89
Sisters of St. Joseph of Carondelet	\$81,765
Alumni	149,879
Friends	97,271
Parents	10,451
Corporations and Businesses	296,483
Foundations and Associations	201,132
Missouri Colleges Fund	37,995
Insurance Program	494,002
Gifts-In-Kind	46,150
<b>TOTAL GIFTS AND GRANTS</b>	<b>\$1,415,128</b>



## The Campaign For Fontbonne Science Initiative

Thanks to THE CAMPAIGN FOR FONTBONNE, the Science Initiative was completed this summer. The research and development lab for the human environmental sciences department, two chemistry labs and a chemistry preparation lab, a new and expanded IBM computer lab and the Fine Arts recital hall were the projects completed.

Listed are the donors who made this phase of the Campaign possible. Also photos in the Honor Roll show parts of the Science Initiative.



Chemistry Lab Before

- Donors**
- Anheuser-Busch Foundation  
 Mr. and Mrs. J. Hunt Benoist  
 Mr. and Mrs. Van-Lear Black III  
 Boatmen's Bancshares  
 Clayton Savings and Loan  
 Commerce Bank of St. Louis County  
 Mr. and Mrs. Emmett Doerr  
 Mr. and Mrs. Bernard Edison  
 Fisher Controls International  
 Clifford W. Gaylord Foundation  
 Laclede Gas Company  
 John. A. Love Charitable Foundation  
 Maritz, Inc.  
 Mercantile Trust  
 Millstone Foundation  
 Monsanto Fund  
 Petrolite Company  
 Mr. and Mrs. Merle M. Sanguinet  
 Mr. and Mrs. Vincent E. Shaw  
 Mr. and Mrs. John T. Tucker  
 Webb Foundation



Chemistry Lab During Construction

## Fontbonne College Board of Trustees 1989-90

**Mary dePaul Berra, CSJ**  
*President*  
 St. Joseph Academy  
 St. Louis, Missouri

**Van-Lear Black III**  
*Vice President*  
 Enterprise Leasing Company  
 St. Louis, Missouri

**Marie Charles Buford, CSJ**  
*Executive Director*  
 Carondelet Community  
 Betterment Federation  
 St. Louis, Missouri

**Louis S. Dennig, Jr.**  
*President and CEO*  
 First National Bank of  
 St. Louis County  
 Clayton, Missouri

**Judge Rosemary Denson**  
*U.S. Administrative Law Judge*  
 U.S. Coast Guard  
 St. Louis, Missouri

**Jacqueline Dillon, CSJ**  
*Associate Professor, Education*  
 Harris-Stowe State College  
 St. Louis, Missouri

**Martha Hatch Doerr**  
*Civic Volunteer*  
 Milwaukee, Wisconsin

**Meneve Dunham**  
*President*  
 Fontbonne College  
 St. Louis, Missouri

**Marilyn W. Edison**  
*Civic Volunteer*  
 St. Louis, Missouri

**Ronald C. Giles**  
*Staff Vice President, Internal Audit*  
 General Dynamics  
 Corporation  
 St. Louis, Missouri

**George S. Graff**  
*Retired President*  
 McDonnell Aircraft Company  
 St. Louis, Missouri

**M. Tobias Hagan, CSJ**  
*General Councilor*  
 St. Joseph Generalate  
 St. Louis, Missouri

**Katherine Hanley, CSJ**  
*Assistant General Superior*  
 St. Joseph Generalate  
 St. Louis, Missouri

**Daniel L. Human**  
*Partner*  
 Ziercher and Hocker  
 St. Louis, Missouri

**Suzanne Kearney, CSJ**  
*President*  
 House of Affirmation, Inc.  
 Hopedale, Massachusetts

**Marylen Mann**  
*Executive Director*  
 OASIS  
 Clayton, Missouri

**Mary McGlone, CSJ**  
*Graduate Student*  
 St. Louis University  
 St. Louis, Missouri

**Michael E. Miller**  
*Corporate Vice President,*  
*Administration*  
 Monsanto Company  
 St. Louis, Missouri

**Barbara Moore, CSJ**  
*Program Coordinator*  
 Samuel U. Rodgers  
 Community Health  
 Center, Inc.  
 Kansas City, Missouri

**Thomas M. Noonan**  
*President*  
 Commerce Bank of St. Louis  
 St. Louis, Missouri

**Mary Catherine O'Gorman, CSJ**  
*Assistant Director*  
 Exodus Program  
 Dittmer, Missouri

**Henrietta Binder Osterholt**  
*President*  
 South Side Roofing  
 Company  
 St. Louis, Missouri

**Pierce Powers**  
*Secretary*  
 Charles L. Crane Agency  
 St. Louis, Missouri

**Peter A. Puleo**  
*Retired President*  
 Industrial Process  
 Equipment Company  
 St. Louis, Missouri

**Steven C. Roberts**  
*Executive Vice President*  
*and General Counsel*  
 Roberts-Roberts and  
 Associates, Inc.  
 St. Louis, Missouri

**Fred Sauer**  
*President*  
 Orion Investment Company  
 St. Louis, Missouri

**Vincent Shaw**  
*President*  
 Vescon, Inc.  
 St. Louis, Missouri

**Most Rev. J. Terry Stieb, SVD**  
*Auxiliary Bishop*  
 The Catholic Center  
 St. Louis, Missouri

**Frederic Steinbach**  
*President*  
 Steinbach Enterprises  
 St. Louis, Missouri

**Ruth O'Neill Stroble**  
*Civic Volunteer*  
 St. Louis, Missouri

**Gregory B. Vatterott**  
*President*  
 Charles F. Vatterott and Company  
 St. Ann, Missouri

### Trustee Emeriti

**J. Hunt Benoist**  
*Chairman of the Board and President*  
 Hercules Construction Company  
 St. Louis, Missouri

**Rosemary Michelson Boedeker**  
*Civic Volunteer*  
 St. Louis, Missouri

**Rosemary Flanigan, CSJ**  
*Professor*  
 Department of Philosophy  
 Rockhurst College  
 Kansas City, Missouri

**August L. Griesedieck**  
*Partner*  
 Schlafly, Griesedieck, Ferrell and Toft  
 St. Louis, Missouri

**Jane Freund Harris**  
*Civic Volunteer*  
 St. Louis, Missouri

**George A. Newton**  
*Chairman of the Board Emeritus and*  
*Consultant, Corporate Finance*  
 Stifel Nicolaus and Company, Inc.  
 St. Louis, Missouri

**Ruth Margaret Raupp, CSJ**  
*Assistant Administrator of*  
*Carondelet and Spiritual Director*  
 St. Joseph's Provincial House  
 St. Louis, Missouri

**Merle M. Sanguinet**  
*Retired, Chairman of the Board*  
*and Chief Executive Officer*  
 County Tower Corporation  
 St. Louis, Missouri

**Daniel F. Sheenan, Sr.**  
*Chairman, Executive Committee*  
 The Dolan Company  
 St. Louis, Missouri

**Martha Smith, CSJ**  
*Professor*  
 Department of History  
 Avila College  
 Kansas City, Missouri

**Hy A. Waltuch**  
*President*  
 Prime Business Brokers, Inc.  
 St. Louis, Missouri



# Honor Roll of Donors July 1, 1988 through June 30, 1989

## College Benefactors

Benefactors are recognized for their cumulative gifts to the college as well as gifts received during the fiscal year July 1, 1988 through June 30, 1989.

### Medaille Society

(\$100,000 or more)

Mrs. Cecil Price Arnold\*  
Anheuser-Busch Companies, Inc.  
Anonymous  
Mabee Foundation, Inc.  
Missouri Colleges Fund  
Monsanto Fund  
Sisters of St. Joseph of Carondelet,  
St. Louis Province  
Southwestern Bell Foundation  
U.S. Department of Education  
U.S. Department of Energy

### Rossiter Society

(\$50,000 to \$99,999)

Clifford Willard Gaylord Foundation  
George Warren Brown Foundation  
Edward C. Garvey Memorial Foundation  
Mr. and Mrs. George S. Graff  
McDonnell Douglas Foundation  
Mr. and Mrs. Robert J. Quinn  
Union Electric Company  
Whitaker Charitable Foundation

### O'Hara Society

(\$10,000 to \$49,000)

American Diabetes Association  
American Food Management  
Anonymous  
Tobias Anth  
The Archdiocese of St. Louis  
Barbara Atteln '67  
Boatmen's Bancshares  
Mr. and Mrs. Van-Lear Black, III  
Helen Bremmer  
Theresa Burmeister '35  
Center Bank (Now Boatmen's  
Bancshares, Inc.)  
Commerce Bank of St. Louis  
Mr.\* and Mrs. Anthony W. Crowley  
Caleb C. and Julia W. Dula Educational  
& Charitable Foundation  
Meneve Dunham  
Harry Edison Foundation  
Enterprise Leasing Company  
Fisher Controls International  
Fontbonne College Alumni Association  
General Dynamics Corporation  
Mr. and Mrs. August L. Griesedieck  
Mr. and Mrs. Edward P. Gund  
(Charlotte Bussmann '39)  
Bruce Halliday  
Mr. and Mrs. Whitney R. Harris  
Mrs. Henry A. Hassett  
Mr. and Mrs. David C. Jones  
(Patricia Cobb '66)  
Laclede Gas Foundation  
The John Allen Love Charitable  
Foundation  
The Jordan Charitable Foundation  
Dr. and Mrs. John T. McNamara  
(Norrine Gibbons '46)  
Mr. and Mrs. Eugene McBride  
(Marie Jostes '37)  
Mr. and Mrs. Richard K. Mersman  
(Mary Jane Brandau '47)  
Anne Catherine Meyer '34  
Military Order of the Purple Heart  
Millstone Foundation  
Missouri Arts Council  
Mrs. Robert Osterholt  
(Henrietta Binder '45)  
Ralston Purina Company  
Martha Re '58  
Mr. and Mrs. Merle Sanguinet  
Mr. and Mrs. Albert Schoendiens  
(Mary O'Reilly '45)  
Sears Roebuck Foundation  
Mr. and Mrs. Vincent E. Shaw  
Mr. and Mrs. Donald M. Strathearn, III  
(Joanne Arnold '71)  
Mr. and Mrs. Francis A. Stroble  
(Ruth O'Neill '52)  
Norman Stupp Foundation  
Mr. and Mrs. John T. Tucker  
(Lucy George '55)  
Vatterott Foundation  
Charles F. Vatterott & Company  
Mr. and Mrs. Gregory B. Vatterott  
The Webb Foundation

### Vachon Society

(\$5,000 to \$9,999)

Bing Crosby Youth Fund  
Mr. and Mrs. Edward Boedeker  
(Rosemary Michelson '36)  
Dr. and Mrs. Robert E. Bolinske  
(Anne Kramolowsky '47)  
Mr. and Mrs. William Brew  
(Helen Schulte '32)  
Agnes Clarkson\*  
Clayton Savings & Loan  
Mr. and Mrs. Allan Coolsaet  
Corrigan Company  
Mrs. Thomas J. Corrigan, Sr.  
(June Wynne '39)  
Louis S. Dennig, Jr.  
Mr. and Mrs. Arthur DeStefano  
Dr. and Mrs. Thomas Egan  
(Joan Koziatek '80)

Farmers Insurance Company  
Mr. and Mrs. John T. Finley  
(Charlotte Berkel '38)  
First National Bank of St. Louis County  
Reverend Jack Fleming  
Mr. and Mrs. Robert E. Flynn  
Graybar Electric  
Mrs. Albert Guzzardo  
Cecilia Hederman '43  
Elizabeth Burton Holmes '66  
McBride Trust Company  
Dr. and Mrs. Harold McGrath  
(Lorene Bremmer '68)  
Mr. and Mrs. John T. McGrath  
Mercantile Trust Company  
Leontone Meyer '35  
Robert E. Miller Insurance  
Mr. and Mrs. Robert E. Miller  
(Carol Shaughnessy '57)  
Honorable Margaret Mary Nolan '52  
Dr. and Mrs. Edward J. O'Brien  
(Colette Crowley '65)  
Reintjes Foundation  
Mr. and Mrs. Robert Reintjes  
(Carolyn Lewis '55)  
Dr. and Mrs. Kenneth J. Siegrist  
(Elaine Vande Walle '48)  
Mr. and Mrs. John Steinfeld  
(Audrey Naumann '43)  
Mr. and Mrs. Joseph T. Theby  
Mr. and Mrs. James C. Thompson  
(Alice Igoe '29)  
Dr. Gladys E. Vail  
Mrs. Charles F. Vatterott  
(Mary Patricia Dolan '39)  
Wahlert Foundation  
W.K. Kellogg Foundation  
Mr. and Mrs. Hy A. Waltuch  
Catherine Weidle '46  
Mr. and Mrs. James B. Werle  
(Mary Ellen Bruno '68)

## Annual Giving 1988-89

Thank you for your generosity and gifts to Fontbonne College. We have made every effort to include everyone who contributed to this year's annual fund. Please contact the Office of Institutional Advancement if we have erred. (314) 889-1412

### President's Patron

(\$10,000 or more)

Anheuser-Busch Companies, Inc.  
Mr. and Mrs. Emmett Doerr  
(Martha Hatch '35)  
The Caleb C. and Julia W. Dula  
Charitable Foundation  
Fontbonne Athletic Association  
Edward C. Garvey Memorial Foundation  
Enterprise Leasing  
General Dynamics Corporation  
Harry Edison Foundation  
Missouri Colleges Fund  
Monsanto Fund  
Norman J. Stupp Foundation  
Sisters of St. Joseph of Carondelet,  
St. Louis Province  
Southwestern Bell Foundation  
Mr. and Mrs. Donald M. Strathearn, III  
(Joanne Arnold '71)  
Mr. and Mrs. Francis A. Stroble  
(Ruth O'Neill '52)  
U.S. Department of Energy  
Union Electric Company

### President's Fellow

(\$5,000 to \$9,999)

Allen and Josephine Green Foundation  
Archdiocese of St. Louis  
Boatmen's Bancshares, Inc.  
George Warren Brown Foundation  
Clifford Willard Gaylord Foundation  
Commerce Bank of St. Louis  
Meneve Dunham  
Mr. and Mrs. Bernard A. Edison  
Mr. and Mrs. George S. Graff  
Jordan Charitable Foundation  
Laclede Gas Charitable Foundation  
Mercantile Trust Company  
Midcoast Aviation  
Millstone Foundation  
Petrolite Corporation  
Mr. and Mrs. John T. Tucker  
(Lucy George '55)  
Mr. and Mrs. Gregory B. Vatterott  
Charles F. Vatterott & Company

### President's Benefactor

(\$2,500 to \$4,999)

Mr. and Mrs. Van-Lear Black, III  
General American Charitable  
Foundation  
Frank J. Guyol, Jr.  
Bruce W. Halliday  
Rev. Msgr. Robert L. McCarthy  
Mr. and Mrs. Michael E. Miller  
Missouri Arts Council  
Ralston Purina Company  
Mr. and Mrs. Vincent Shaw

### President's Association

(\$1,000 to \$2,499)

Anonymous  
Barbara Atteln '67  
Mr. and Mrs. August A. Baechle  
(Carroll Cunningham '60)  
Mr. and Mrs. J. Hunt Benoist  
Mr. and Mrs. Edgar Boedeker  
(Rosemary Michelson '36)  
Dr. and Mrs. Robert E. Bolinske  
(Anne Kramolowsky '47)  
Mr. and Mrs. William B. Brew  
(Helen Schulte '32)  
Theresa Burmeister '35  
Commerce Bancshares of Kansas City  
Mr.\* and Mrs. Anthony W. Crowley  
Mr. and Mrs. Louis Dell'Orco  
(Marilyn Montileone '61)  
Louis S. Dennig, Jr.  
Mr. and Mrs. Joseph T. Doyle  
Mr. and Mrs. Len Dumonceaux  
(Alice Ashcroft '67)  
Mrs. Arthur Efken  
(Rosalie Millman '56)  
Dr. and Mrs. Thomas Egan  
(Joan Koziatek '80)  
Alice Beffa Erdelen '27  
Farmer's Insurance Group Scholarship  
First National Bank of St. Louis County  
Fisher Controls International  
Mr. and Mrs. Ronald C. Giles  
Graybar Electric Company  
Mr. and Mrs. August L. Griesedieck  
Mr. and Mrs. Edward Gund  
(Charlotte Bussmann '39)  
Mr. and Mrs. William B. Guyol  
Helen Guyol '41  
Marie Hanss  
Mrs. Henry A. Hassett  
Mr. and Mrs. Paul F. Hochenadel  
Mrs. Jerome Holden  
(Rosejoan Kisling '45)  
Elizabeth Burton Holmes '66  
John Allen Love Charitable Foundation  
Lucy and Stanley Lopata  
Maritz Corporation  
Mr. and Mrs. Eugene F. McBride  
(Marie Jostes '37)  
Dr. and Mrs. Harold McGrath  
(Lorene Bremmer '68)  
Mr. and Mrs. John T. McGrath  
Mr. and Mrs. Robert G. McKelvey  
Dr. and Mrs. John J. McNamara  
(Norrine Gibbons '46)  
Merrill Lynch & Company, Inc.  
Mr. and Mrs. Richard Mersman, Jr.  
(Mary Jane Brandau '47)  
Anne Catherine Meyer '34  
Leontone Meyer '35  
Dr. and Mrs. Francis Miller  
(Jacqueline Post '58)  
Mr. and Mrs. Robert Miller  
(Carol Shaughnessy '57)  
Morrison Custom Management  
Hon. Margaret M. Nolan '52  
Mr. and Mrs. Thomas M. Noonan  
(Gabrielle Chadeayne '80)  
Dr. and Mrs. Edward J. O'Brien, Jr.  
(Colette Crowley '65)  
Mrs. Robert Osterholt  
(Henrietta Binder '45)  
Rose N. Perotti '52  
Raymond J. Pettyjohn '88  
Mr. and Mrs. Harry H. Pope  
Mr. and Mrs. Peter A. Puleo  
Pulitzer Publishing Company Foundation  
Mr. and Mrs. Robert J. Reintjes  
(Carolyn Lewis '55)  
Reliable Life Insurance Company  
Mr. and Mrs. Merle M. Sanguinet  
(Marilyn A. Price '58)  
Mr. and Mrs. Carl Schack  
(Marilyn A. Price '58)  
Mr. and Mrs. Albert F. Schoendiens  
(Mary O'Reilly '45)  
Mr. and Mrs. Robert Senkosky  
Service Travel Company  
Mr. and Mrs. John J. Sheehan  
Joseph A. Sheehan, Jr.  
Mr. and Mrs. Roger Spiller  
St. Louis County Water Company  
A. Jean Stoner  
Sverdrup Corporation  
Vatterott Foundation  
Mr. and Mrs. Hy Waltuch  
Mr. and Mrs. Jerry Wamser  
(Jeanette Altepeter '70)  
Mr. and Mrs. James B. Werle  
(Mary Bruno '68)  
Arthur Young Foundation  
Mr. and Mrs. Eugene Zehr  
(Elizabeth Roer '50)  
Katherine L. Zwisler

### Tower Society

(\$500 to \$999)

Mr. and Mrs. William Abkemeier  
Arthur Andersen & Company  
Foundation  
Dr. Nick Colarelli  
Conner Ash and Company  
Mr. and Mrs. Allen Coolsaet  
Coopers & Lybrand Foundation  
Honorable Rosemary A. Denson '69  
Mr. and Mrs. Emil Fleck  
(Dorothy Fleck '69)  
Karen S. DeGuire Gedera '65  
Mr. and Mrs. Michael Georgen  
(Nancy Boos '76)  
Mr. and Mrs. Dan Human  
Dr. and Mrs. Louis Kadas  
(Thelma Hutt Kadas '76)  
Dr. Karen Marie Keefe '82  
Joseph E. McCrate  
Mr. and Mrs. Craig Mold  
(Judith Cyran '70)

Mr. and Mrs. James Moore  
(Jeanne Dulle '81)  
Regional Cultural & Performing  
Arts Council  
Dr. and Mrs. Carl Schack  
(Merlyn Price '58)  
Mr. Donald Charles Simpson  
(Mary Estelle O'Keefe '85)  
Mr. and Mrs. Fredric M. Steinbach  
Mrs. Charles F. Vatterott  
(Mary Patricia Dolan '39)  
Marion Vonder Haar  
Mr. and Mrs. Lee J. Wilson  
(Phyllis Goedert '65)  
Tom and Donna Yahraes

### 1989 Arcade Society

(\$250 to \$499)

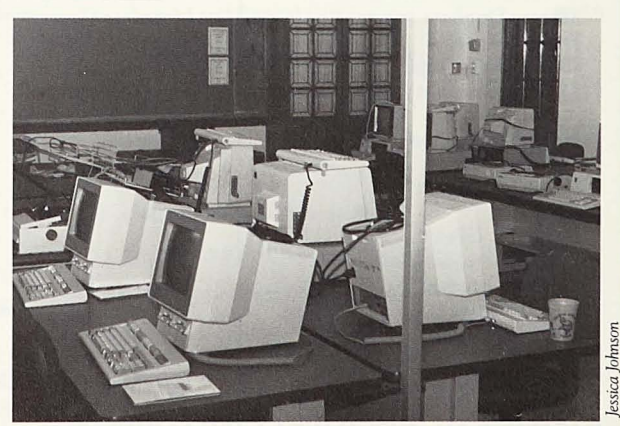
Mr. and Mrs. Thomas Arenz  
(Kathleen M. Kenny '69)  
Mr. and Mrs. David Amelotti  
(Elizabeth Miller '77)  
Mr. and Mrs. Raymond Augsburg  
(Ritarose Nagle '47)  
Mr. and Mrs. George Bill  
(Thelma Munkres '48)  
Mr. and Mrs. Michael Bellevance  
Mr. and Mrs. James Brandenburg  
Donald Burgo  
Mr. and Mrs. Iginio Caira  
Dr. and Mrs. Rudolph Catanzaro  
(Helen Calaldi '50)  
Dr. Nick Colarelli  
Mr. and Mrs. James F. Combs  
(Elizabeth Newman '49)  
Mr. and Mrs. Michael Ewald  
Mr. and Mrs. Frank Fennerty  
(Phyllis Fitterer '50)  
Mr. and Mrs. John Finley  
(Charlotte Berkel '38)  
William Friedman  
Dr. and Mrs. Charles Gauthier  
(Peggy Hornsby '63)  
Paul Haudrich  
(Sally Walsh Haudrich '56\*)  
Mr. and Mrs. Robert Hellrung  
(Ruth McNamara '42)  
Mr.\* and Mrs. Kenneth Henning  
Mr. and Mrs. Robert Hodge  
(Carmen Villabos '61)  
Dr. and Mrs. Donald F. Hoffman  
(Marise Eaton '60)  
Mr. and Mrs. Eugene E. Hurd  
(Catherine Knaepen '39)  
Mr. and Mrs. Joseph M. Kapilla  
(Marjorie Aylward '37)  
Linda Kurz  
Mr. and Mrs. Gordon B. Lowell  
(Hilda Bantle '61)  
Mr. and Mrs. John Mallon  
(Mary Ann Keiper '68)  
Mr. and Mrs. Donald McDaniel  
(Francis Lazzari '71)  
Dr. and Mrs. Philip Martin  
(Jean Taucher '68)  
Mr. and Mrs. Lee McKinney  
Mr. and Mrs. Floyd Meyer  
(Rosemary Case '33)  
Mr. and Mrs. James F. Moore  
(James F. Moore '81)  
Mary Ellen Murphy '63  
Mel Patton  
Philip Morris, Inc.  
John D. Philips  
Regional Cultural & Performing Arts  
Council  
Mr. and Mrs. William Schroeder  
(JoAnne Eisele '61)  
Mr. and Mrs. John T. Slattery  
Stupp Brothers Bridge & Iron Company  
Mr. and Mrs. James C. Thompson, Sr.  
(Alice Igoe '29)  
JoAnne M. Westerheide '74  
Judith Ann Willard '81  
Dr. Joyce Devine Woolsey

### Century Club

(\$100 to \$249)

Mr. and Mrs. Archie Adamson  
(Charlotte Magill '31)  
Mr. and Mrs. Philip H. Albright  
(Annette Nahmensen '47)  
Alcoa Foundation  
Ethan W. Allen '88  
Mr. and Mrs. Horace S. Allen  
(Audrey Driscoll '40)

New Computer Lab



Jessica Johnson



Mr. and Mrs. Donald M. Driessen  
Mr. and Mrs. Leo C. Drozeski, Jr.  
(Betty Nell Huber '62)  
Ann Olivia Dryden '82  
Mrs. Joseph Duer  
(Ann Moore '55)  
Mr. and Mrs. Duke Durfee  
(Susan A. Schinner '73)  
Mr. and Mrs. Gerald C. Durr  
(Katherine Flynt '39)  
Mr. and Mrs. Thomas Ebanues  
(Susan Kaiser '57)  
Angela M. Eckstein '52  
Mrs. Nancy Ellis-Ordway  
Mr. and Mrs. Holland Elmore  
(Christine M. Kriegesies '75)  
Mr. and Mrs. Joseph Enright  
(Marian Mueller '40)  
Mr. and Mrs. William Erman  
(Rosemary Fitzburgh '57)  
Dr. and Mrs. F. J. Ewers, Jr.  
(Mary Jane Quirk '45)  
Maggie M. Faust '58  
Florence Noble Feagan '30  
Ann M. Feld '77  
Frank Ferrario '79  
Mr. and Mrs. Wayne E. Fick  
(Janie Bianchi '54)  
Raymond H. Fienup  
Joan Wheat Flanagan '85  
Eleanor Reynolds Flynn '31  
Mr. and Mrs. James Flynn  
(Roberta Nunn '65)  
Mary Patricia Fowler '52  
Mr. and Mrs. G. Richard Fox  
(Carol L. Halbert '66)  
Mr. and Mrs. George Fox  
Susan M. Franklin '79  
Mr. and Mrs. Robert L. Fredericks  
(Alice C. Cejka '41)  
Mr. and Mrs. Lester Fries  
(Marcella Carlton '38)  
Mr. and Mrs. Millard Frohock  
(Rosemary Ryan '47)  
Mr. and Mrs. Carl J. Fust  
(Rita Jean Solovitz '65)  
Mary Rose Sheehan Galli '37  
Anthony Gandolfo  
Mr. and Mrs. Robert J. Geile  
(Susan McGuire '70)  
Carol E. Giblin '57  
Mr. and Mrs. Leo B. Goessling  
(Dorothy Jane Morse '37)  
Joan Gossin '54  
Mr. and Mrs. Kenneth Grant  
(Elizabeth Schenk '37)  
Joan Sandweg Gray '71  
Mr. and Mrs. John Grayhack  
(Elizabeth Houlehin '48)  
Mr. and Mrs. John Griffin  
(Kathleen Pugh '64)  
Mrs. Donald Gunn, Sr.\*  
(Loretto Hennelly '29)  
Mr. and Mrs. James F. Gunn  
(Leota Hynek '63)  
Mr. and Mrs. Paul J. Gutzler  
(Mary Louise Streit '49)  
Mr. and Mrs. Eric C. Haecckel  
(Rosemary Hess '65)  
Mr. and Mrs. Michael M. Hannegan  
(Joan P. Puetz '86)  
Clare L. Harder '36  
Alice E. Harper '70  
Mr. and Mrs. Donald T. Haynes  
(Mary Schumacher '49)  
Cecilia Hederman '43  
Mr. Jack Heidt  
Helen M. Heilich '83  
Mrs. Mary Heitzig  
(Mary Fleming '31)  
Mr. and Mrs. Raymond Hellweg  
(Dorothy Patricia Lynch '54)  
Mr. and Mrs. Stephen J. Henske  
(Andrea M. Mueller '68)  
Mrs. Mary Hentrich  
(Mary W. Wand '40)  
Mr. and Mrs. Carl J. Heumann  
(Angeline M. Marino '58)  
Mr. and Mrs. Paul J. Hicks  
(Veronica Ann Orob '68)  
Deborah D. Higgs '80  
Richard Hinnert  
Mr. and Mrs. Charles Hodge  
(Mary Sullivan '70)  
Dr. and Mrs. Donald E. Hoffman  
(Marise Eaton '60)  
James Lorene Hogan, CSJ '52  
Mr. and Mrs. Gerald Holden  
(Mary Ann Vatterott '59)  
Mr. and Mrs. Williams F. Holmes, Jr.  
(Jean Anderson '52)  
Mrs. Lorene Holtkamp  
(Lorene Kavanaugh '33)  
Mr. and Mrs. Charles Hunt  
(Joan Wiss '51)  
Mrs. Gerald Hurt  
Mr. and Mrs. Harry L. Hutz  
(Janet Dierks '71)  
Mr. and Mrs. John A. Intravia  
(Margaret Ryan '73)  
Dr. and Mrs. Frank X. Jana  
(Joann Augsberger '74)  
Mr. and Mrs. Gary W. Johnson  
(Carolyn K. Kuciejczyk '64)  
Mr. and Mrs. Joseph J. Johnston  
(Marilyn McAteer '44)  
Mrs. Katherine Jostrand  
(Katherine M. McDonough '38)  
Ruth Joyce '33  
Mr. and Mrs. Carl Juelfs  
(Joan Schwartz '70)  
Mr. and Mrs. William Kanter  
(Pamela S. Sloofman '73)  
Mr. and Mrs. Stephen R. Kappel  
(Mary T. Hutchison '71)  
Dr. and Mrs. Gerald N. Karpman  
(Paula Ray Obertino '72)  
Mr. and Mrs. Eugene Kelly  
(Mary Ellen Zwisler '54)  
Dr. and Mrs. John King  
(Mary Jane Helm '39)  
Mr. and Mrs. Richard Kleine  
(Mary Lou Miller '57)  
Helen K. Klenklen '88  
Dr. and Mrs. Theodore Klingen  
(Maura Downey '55)  
Mr. and Mrs. Edward R. Knop  
(Helen Holmberg '42)

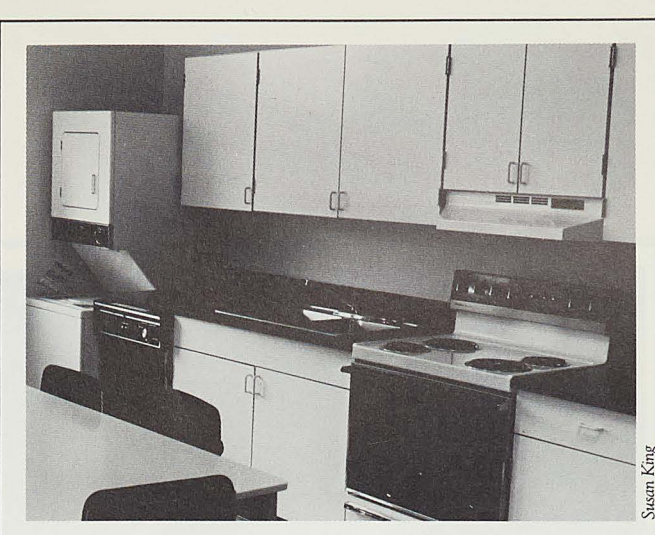
Mr. and Mrs. Andrew J. Konczal  
(Veronica Murray '68)  
Mr. and Mrs. James C. Kovarik  
(Marie Therese Moonier '56)  
Mrs. Kay Kroeter  
(Kay O'Hanlon '49)  
Mr. and Mrs. Gene H. Kuhn  
(Mary Ann Brys '56)  
Dr. and Mrs. France A. Laux  
(Josephine Wilt '55)  
Mr. and Mrs. Donald E. Lenhardt  
(Isabelle Ann Fracchia '71)  
Mr. and Mrs. George H. Leonard, Jr.  
(Mary Ann Riordan '46)  
Mr. and Mrs. John P. Leslie  
(Diana M. Brooks '69)  
Mr. and Mrs. Hiram S. Ligggett, Jr.  
Mr. and Mrs. Glen Light  
Mr. and Mrs. David Link  
(Jane Louise Hadank '68)  
Mallinckrodt Foundation, Inc.  
Mr. and Mrs. Wallace E. Maloney  
(Sarah Jane Berger '53)  
Jeanne Manley  
Marathon Oil Foundation  
Nannette Marking-Camuto '74  
Mr. and Mrs. Claude Martin  
(Kay Gunn '55)  
Dr. and Mrs. James L. Mathis  
(Ann Kimbrough Weber '47)  
Mr. and Mrs. Thomas M. Mayer  
(Rita Slaznik '69)  
Mr. and Mrs. Edward A. McAllister  
(Patricia Dunn '65)  
Mr. and Mrs. James F. McAndrew  
(Marjorie S. Whalen '32)  
Mr. and Mrs. Edward McCabe  
(Beverly Bledsoe '69)  
Mr. and Mrs. Edward T. McCormick  
(Carol Branson '70)  
Brian McCue  
Lucille McDonald '31  
Mr. and Mrs. Michael R. McEwan  
(Celine Wuellner '77)  
Mr. and Mrs. Michael A. McNamara  
(Kathryn R. Kluska '70)  
Susan Medgyesi-Mitscha '65  
Mr. and Mrs. Norman Miller  
(Mary Rogge '60)  
Mr. and Mrs. Donald J. Minneman  
(Marie Boedges '47)  
Mr. and Mrs. Charles A. Mogab  
(Colleen Richey '46)  
Kathleen M. Moloney '69  
Mr. and Mrs. Clarence Mongold  
(Jeanne Conway Davison '48)  
Monroe Auto Equipment Company  
Mr. and Mrs. Joseph Montague  
(Audrey Frances Klausner '51)  
Mr. and Mrs. Gerald M. Moore  
(Joy Janoski '68)  
Leona M. Moore '81  
Morton Thiokol, Incorporated  
Keith M. Mosier '82  
Mr. and Mrs. John T. Mudd  
Mr. and Mrs. E. F. Murray  
(Elise Dubuque '38)  
Mr. and Mrs. Eugene Naes  
(Marilyn Ann Roeder '68)  
Erminia T. Naggi '37  
Mr. and Mrs. Sammy Ng  
(Della Marie Doerr '69)  
Mrs. Marie A. Niemeier  
(Marie Antoinette Grover '31)  
Kathryn Eames Nixon '81  
Mary Ann Noonan '63  
Mr. and Mrs. Guy G. Norcini  
(Dorothy E. Barada '41)  
Mr. and Mrs. Richard O'Brien  
(Alison Grill '73)  
Dr. and Mrs. Martin E. O'Brien  
(Barbara Gabreski '68)  
Mr. and Mrs. Thomas J. O'Toole  
Mr. and Mrs. Jerome Oidman  
(Mary Lee Green '58)  
Julia Roerkohl Okenfuss '60  
Mr. and Mrs. Nicholas Palmer  
(Ruthanne Ahlemeyer '70)  
Mr. and Mrs. Paul Pastorek  
(Marilyn Vitale '75)  
Mary Beth Paul '64  
Mr. and Mrs. James Peller  
(Susan L. Nash '58)  
Jane O'Connell Pennell '38\*  
Lana R. Pepper '87  
Pet, Incorporated  
Mr. and Mrs. Richard J. Pfeifer  
(Rosemary Myers '57)  
Dan Philips, Sr.  
Mr. and Mrs. Robert Pohlkotte  
Pohlkotte Ressler Corporation  
Margaret A. Porcelli '72  
Mr. and Mrs. Mark J. Potts  
(Patricia Finnegan '67)  
Mr. John R. Powers, Jr.  
Mr. and Mrs. Frederick Preis  
(Mary L. Langdon '63)  
Mr. and Mrs. Virgil C. Puetz  
(Jacquelyn Greener '51)  
Kathleen A. Quinlan '60  
R.J. Reynolds Industries  
Mr. and Mrs. Roland F. Raab  
(Claudia Marie Schiavone '69)  
Mrs. Helen Ravarino  
(Helen Marie Badaracco '42)  
Mr. and Mrs. Leo R. Reinkemeyer  
(Theresa Chandler '48)  
Mr. and Mrs. George J. Renard  
(Virginia Lucas '36)  
Mr. and Mrs. Robert J. Riley  
(Mary Jane Boeckmann '70)  
Mr. and Mrs. Everett W. Roper  
(Helen McCauley '43)  
Mr. and Mrs. Fred J. Rosenbaum  
Mr. and Mrs. Allen E. Roth  
(Rosanne Santino '71)  
Mr. and Mrs. Edward Ruder  
(Judith A. Hegedus '64)  
Safeco Insurance Companies  
Dr. and Mrs. Fulton Saier  
(Kathy Martini '69)  
Marianne O. Sanders '74  
Mr. and Mrs. William Saum  
(Elizabeth Pape '62)  
Mr. and Mrs. Philip R. Schenkemberg  
(Mary Martin '66)  
Mr. and Mrs. Carl J. Scherz  
(Elizabeth Vermile '64)

Mr. and Mrs. Ronald Schlattman  
(Carol L. Gutting '57)  
Ms. Alvira Schlueter  
Mr. and Mrs. Joseph B. Schmidt  
(Mary Margaret Lynch '41)  
Mrs. Alex W. Schrader  
(Mary Jane O'Brien '50)  
Patrick Schuchard  
Dr. and Mrs. John G. Schwartz  
(Ann Schumacher '68)  
Katherine Boos Sellenrick '74  
Mr. and Mrs. Richard Shaw  
(Adolphine C. Brungardt '64)  
Mary Lou Sheppeck '69  
Maureen P. Slattery '83\*  
Julia G. Smith  
Dr. and Mrs. Carl Sonnino  
SPX Foundation  
Mr. and Mrs. Robert J. Stein  
Mr. and Mrs. John F. Steinfeld  
(Audrey Naumann '43)  
Mr. and Mrs. Karl W. Stenvall  
(Alice Wahl '33)  
Mary C. Steuterman, M.D. '73  
Mr. and Mrs. E. G. Stevens  
(Florentine Rutkowski '27)  
David Stilller  
Dr. and Mrs. George F. Stocker  
(Betty King '39)  
Mr. and Mrs. Donald J. Stroh  
(Mary Ann Kuhlman '53)  
Dr. and Mrs. Richard H. Strassburger  
(Patricia Trapp '52)  
Margaret Stratmann '73  
Mr. and Mrs. Edwin Styffe  
(Myra Foulke '87)  
Mr. and Mrs. Michael Sullivan  
(Jane Brouk '78)  
Rita Sheehan Sullivan '55  
Mr. and Mrs. William J. Sullivan  
(Ruth Ann Bussman '49)  
Mr. and Mrs. Thomas Surtkus  
(Mary K. Ernat '66)  
Mr. and Mrs. Arthur A. Svoboda  
(Ruth Louise Lamwersick '48)  
Mr. and Mrs. Ronald Szweda  
(Carol Weber '63)  
Mr. and Mrs. Jeff Tallent  
(Carol M. Putman '63)  
Sherry Marie Taylor '88  
Temple Island Foundation  
Elmire P. Tesson '32  
Mr. and Mrs. Joseph T. Theby  
Bernadine Thien '49  
Mr. and Mrs. Donald P. Tielke  
(Jane Hillner '55)  
Carla Tinoco  
Total Petroleum, Inc.  
Mr. and Mrs. James R. Trigg  
(Karen Scribner '82)  
Mr. and Mrs. Victor Tuckett  
Dr. Gladys E. Vail  
Rex Van Almsick  
Marianne Van Drisse '51  
Mr. and Mrs. Lawrence Van Rhein  
(Patricia Reddan '58)  
Mr. and Mrs. Robert Vander Linden  
(Mary E. Schaefer '64)  
Mr. and Mrs. John C. Vatterott  
(Joan Bayot '66)  
Mr. and Mrs. Richard L. Verkler  
(Nancy Flanigan '58)  
Mr. and Mrs. Kenneth Voss  
(Patricia Degnan '55)  
Mr. and Mrs. Eugene Walsh  
(Mary Loretta Finazzo '49)  
George Wang  
Jean Wasko  
Mr. and Mrs. Joseph A. Weber  
(Leona Hall '31)  
Mr. and Mrs. Nicholas Weiler  
(Clare Saenger '59)  
Mr. and Mrs. Ralph Weinrich  
(Jeanette Hartman '30)  
Mr. and Mrs. Henry A. Wellington, Jr.  
(Rosemary Ward '42)  
Mrs. Michael T. Whalen  
(Frances Dlugon '43)  
Mr. and Mrs. Martin Wick  
(Barbara Krausel '60)  
Michael W. Wilcox '88  
Mr. and Mrs. Ben Williams  
(Anne Sullivan '65)  
Mr. and Mrs. Woodrow D. Winter  
(Rose Alma Dofing '45)  
Sandra L. Witte '89  
Mr. and Mrs. Robert Wodraska  
(Dorothy F. Reichert '65)  
Mr. and Mrs. Michael Wolken  
(Carol Gunt '72)  
Mr. Floyd Wood  
Alberta A. Becker Woods '37  
Mr. and Mrs. James A. Wuellner  
Sarah Wymore '88  
Kathryn Wahl Yoch '35  
Gary L. Zack  
Mrs. Walter W. Zaenker '85  
Mrs. Cosmo Zucchero  
(Marie Sansone '42)  
Mr. and Mrs. David Zwart  
(Carolyn M. Carroll '60)

### Alumni

Percent of gift participation by class members follows class year.  
Highest class gift percentage . . . . 1936

- Class of 1927 (40%)**  
Alice Beffa Erdelen  
Florentine Rutkowski Stevens
- Class of 1928 (13%)**  
Lucille P. Perry Darst
- Class of 1929 (38%)**  
Loretto Hennelly Gunn\*  
Louise Kippenberger Janis  
Agnes Reilly  
Mary Kiely Riley  
Alice Igoe Thompson



Susan King

### Development Lab, Human Environmental Sciences

- Class of 1930 (50%)**  
Clare Whalen Casey  
Madeline Dawkins  
Florence A. Noble Feagan  
Elizabeth Hester Hibbs  
Mary Alfred Noble, CSJ  
Jeanette C. Hartman Weinrich
- Class of 1938 (35%)**  
Adriana Mercurio Mueller  
Erminia T. Naggi  
Daphne C. Ramirez  
Dorothy Flynn Ronnau  
Charlotte Hucke Wedler  
Eloise Matlock Welsh  
Alberta Becker Woods
- Class of 1931 (45%)**  
Charlotte Magill Adamson  
Eleanora Baer  
Helen Trenn Cummings  
Eleanor Reynolds Flynn  
Mary W. Fleming Heitzig  
Marcella Hyland  
Lucille McDonald  
Louise Murray Mueller  
Marie A. Grover Niemeier  
Leona Hall Weber
- Class of 1932 (44%)**  
Helisy Galesky Blow  
Ruth MacDonald Bret  
Helen Schulte Brew  
Mary McNary Haper  
Katherine Tackberry Kenny  
Marjorie Whalen McAndrew  
Elmire Tesson  
Frances Moran Walther\*
- Class of 1933 (38%)**  
Eleanor Carey Berg  
Betty A. Rapp Day  
Lorene Kavanaugh Holtkamp  
Ruth M. Joyce  
Genevieve Harris Kealy\*  
Agnes Sommer Letourneau  
Rosemary C. Case Meyer  
Dorothy G. Gruber Nonnenkamp  
Jean A. Roach Rehm  
Marie Balsamo Steinlage  
Alice Wahl Stenvall
- Class of 1934 (19%)**  
Ruth Higgins Davis  
Katherine Grover McDonald  
Anne Catherine Meyer  
Paula C. Schneider Nagy  
Mae Murphy Weyerich
- Class of 1935 (36%)**  
Theresa Burmeister  
Martha Hatch Doerr  
Helen Moran Flynn  
Flora M. Pertici Giovanni  
Eleanor Burgarin Harrison  
Catherine S. Scullin Kennedy  
Leontone Meyer  
Kathryn M. Stanley Timmerman  
Kathryn Wahl Yoch
- Class of 1936 (57%)**  
Constance R. Brown Aulph  
Gertrude Bey  
Rosemary Michelson Boedecker  
Virginia O'Hearn Coates  
Rosemary Donley Desonier  
Grace Ryan Dierkes  
Catherine S. Smith Dodson  
Louise Munsch Dopking  
Martha Redmond Farren  
Iris Westhoff Hanson  
Clare Harder  
Ann McNamara McDermott\*  
Virginia Lucas Renard  
Mary Hortense Gillette Ryan  
Melba Durbin Schneider  
Stephanie Stueber, CSJ
- Class of 1937 (50%)**  
Margaret McQuillan Bien  
Mary W. Broughton, CSJ  
Katheryn Bryeans  
Edythe Comerio Cody  
Ursula Mehring Cody  
Catherine Esser  
Mary Rose Sheehan Galli  
Dorothy Morse Goessling  
Elizabeth Schenk Grant  
Marjory Aylward Kapilla  
Eloise Laumann Lane  
Marie Jostes McBride  
Jane McLaughlin
- Class of 1939 (40%)**  
Joy Locke Bauers  
Lucille Donnelly Brinkman  
Elise A. Byrne  
Lillian T. Carney  
Mary Allen Colby  
June Wynne Corrigan  
Kathryn Miles Davis  
Katherine Flynt Durr  
Mary Gaydos, CSJ  
Charlotte Bussmann Gunt  
Catherine Davis Henry  
Catherine Knaepen Hurd  
Mary Jane Helm King  
Betty Sturrock Lunt  
Mary Shackelford Rodgers  
Eunice Burtt Ryan  
Betty King Stocker  
Eileen Burden Tintera  
Patricia Dolan Vatterott
- Class of 1940 (27%)**  
Audrey Driscoll Allen  
Mary Potts Birch  
Marian Mueller Enright  
Frances Walsh Fairchild  
Rosemarie Brueggemann Geoghegan  
Mary Wand Henrich  
Mae Dufaux Kester  
Frances Walsh Koenig  
Marie Morton Maggard  
Margaret Kirby Meder  
Dorothy Coff Mullen  
Margaret Nelson Russell  
Catherine Rozier Thompson  
Helen Schenk Wilson
- Class of 1941 (21%)**  
Rosemary Howard Bain  
Marie C. Bennett, CSJ  
Alice Cejka Fredericks  
Helen J. Guoyl  
Aileen Perkinson Harlan  
Isabelle Mansour  
Audrey Simmons Martin  
Ann Bischof Mathis  
Rosemary Murphy Miller  
Dorothy Barada Norcini  
Julia Saab Schieszer  
Mary Margaret Lynch Schmidt
- Class of 1942 (28%)**  
Joan Darby Barlow  
Marguerite Fassero Bertoglio  
A. Loraine Flynt  
Mary Stebbins Greer  
Mary P. Hallinan  
Ruth McNamara Hellrung  
Mary Felice Helmes, CSJ  
Mary Bass Hoopes  
Dorothea Wells James  
Helen Holmberg Knop  
Anna Rose Kraus, CSJ  
Lucille O'Connell Merello  
Mary Meyer Ort  
Helen Badaracco Ravarino  
Rosemary Ward Wellington  
Marie Sansone Zucchero

\*Deceased



# Photography From

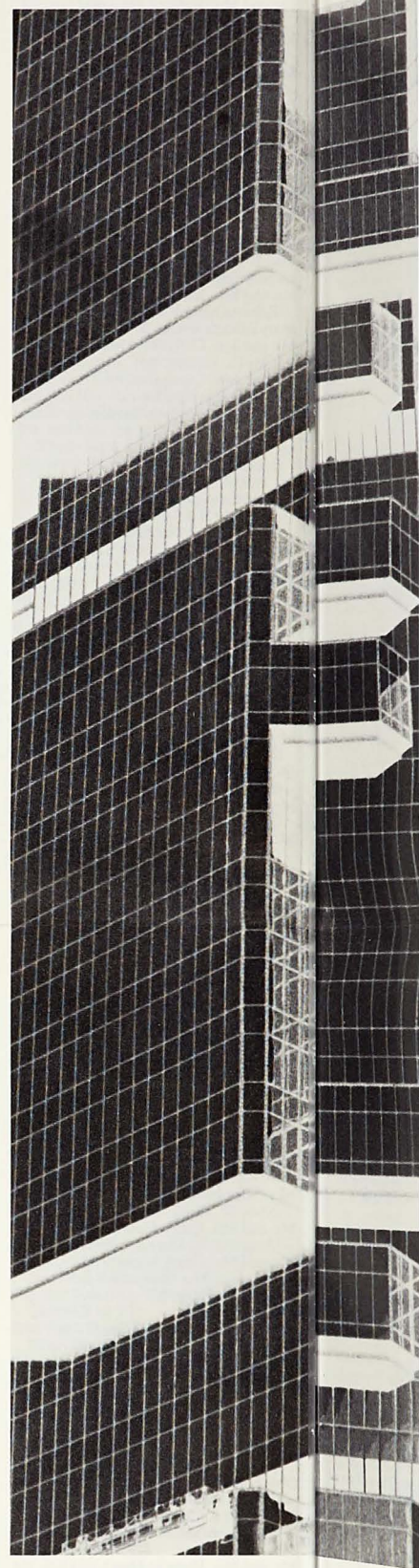
By Alfonso Lee



Scenery (Canada)



42 Key West (Florida)



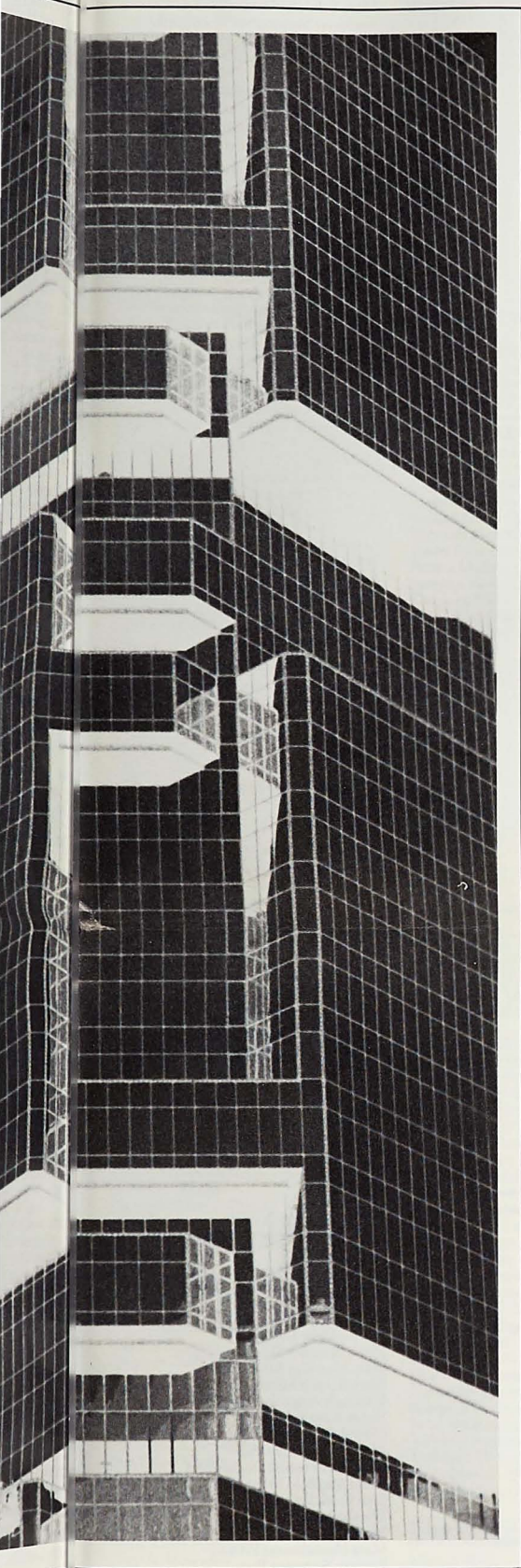
New's Age II (Hong Kong)

Alfonso (Ka-Lok) Lee, a photographer from Key West, Florida, is major marketing in Fontbonne's Business and Administration Department. His photography captures travels as well as his love for the a



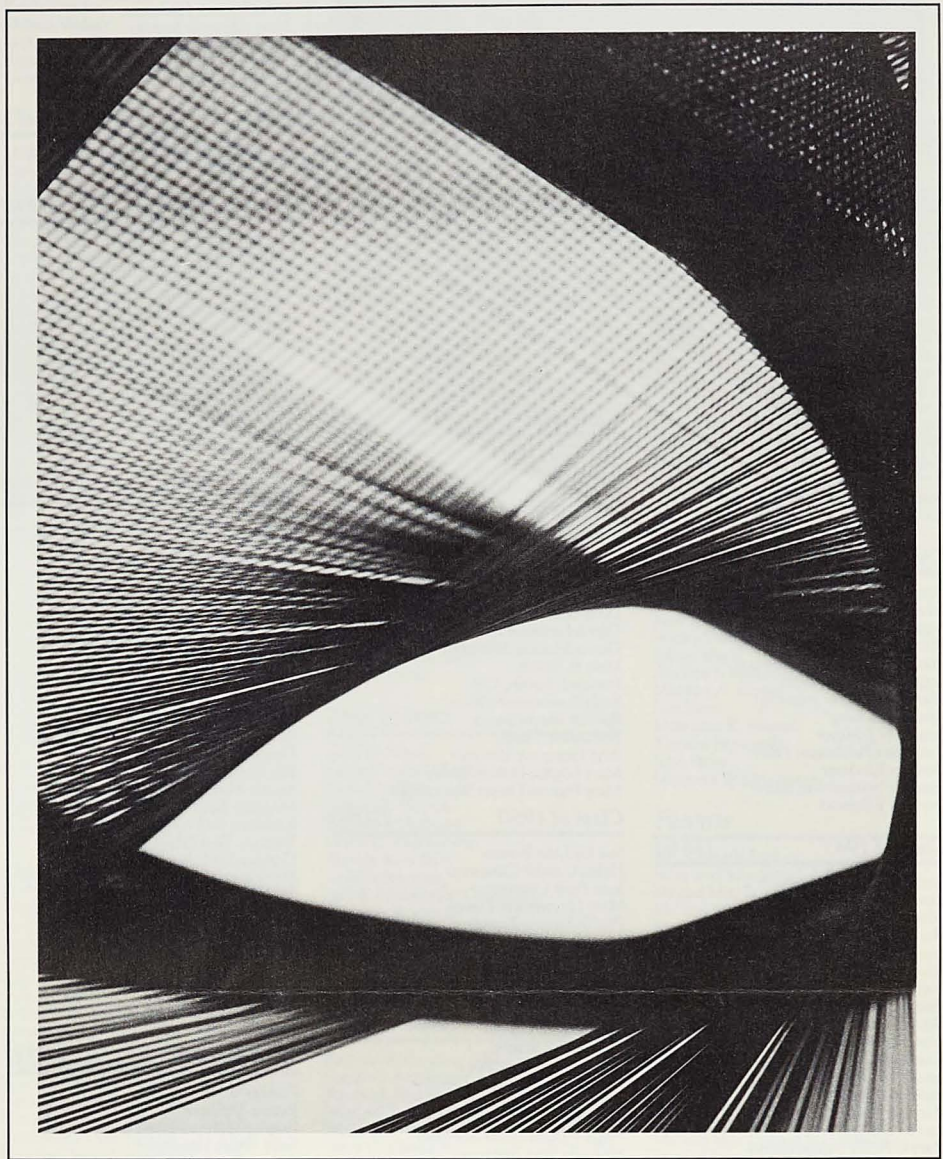
# From Around The World

By *Lo Lee*



(Kong)

(Lok) Leior from Kowloon,  
is major marketing and retail-  
sonne's and Administration  
His photography captures his world  
as his eye for the art.



*Untitled (Chicago)*



*A Red Sunrise (Illinois highway)*





Susan King

## Chemistry Labs During Construction

### Class of 1943 (27%)

Virginia Schindler Audrain  
Marjorie Boeving Belknap  
Rosemary Connell, CSJ  
Jane Kostedt Ellerbrake  
Cecilia Hederman  
Katherine T. Hernan  
Mary Guelker Kalinowski  
Rosemary Galanis Maloney  
Gayle Bardgett McDonough  
Mary L. Menges  
Evelyn Numainville Moenster  
Ruth Margaret Raupp, CSJ  
Helen McCauley Roper  
Helen Decoursey Ruyser  
Carlotta Cafferata Smith  
Audrey Naumann Steinfeld  
Frances Dlugon Whalen

### Class of 1944 (28%)

Henrietta Sabadell Barry  
Edwina Wright Bussmann  
Peggy Cuddy Carney  
Mary Cataldi Ferrara  
Margaret Aubuchon Gremaud  
Peggy McCarthy Hagan  
Marilyn McAteer Johnston  
Alice Ryan Lang\*  
Rosemary J. Meyer  
Catherine Pendergast Pruett  
Dorothy Rinderer  
Suzanne Nachtmann Sachs  
Dorothy J. Stewart

### Class of 1945 (36%)

Aurelia Schindler Aulbach  
Laverne Connors Babor  
Eileen Wiss Bleyer  
Mary Ellen Boggiano Bourneuf  
Rosemary Casey Bruno  
Naomi Gittins Carmody  
Rosemary Kennedy Erman  
Mary Jane Quirk Ewers  
Elizabeth Lucas Gilbert  
Joan Brandt Haines  
Rosejoan Kisting Holden  
Jeanne Mooney  
Henrietta Binder Osterholt  
Marjorie Walker Peak  
Joan M. Sanders  
Mary O'Reilly Schoendienst  
Rose Dofing Winter  
Alice Wotawa

### Class of 1946 (30%)

Marie C. Buford, CSJ  
Jane Buri  
Anne Beasley Hinrichs  
Margaret Sabadell Karpowicz  
Shirley Smith Kern  
Margaret Deck Komives  
Mary Ann Riordan Leonard  
Mary Barthelme McKenzie  
Norrine Gibbons McNamara  
Colleen Richey Mogab  
Julie Schmittgans Neyser  
Sally Polk Parks  
Monica Liston Roach  
Dorothy Robertson Sievers  
Anna P. Siromas  
Marietta O'Kane Smith  
Helen Abt Thornton  
Catherine E. Weidle

### Class of 1947 (29%)

Annette Nahmensens Albright  
Penelope Vassely Anagnos  
Ritarose Nagle Augsburg  
Marilyn Blattner Bagley  
Dorit Burton Becker  
Anne Kramolowsky Bolinske  
Margaret Hyatt Capeci  
Dolores J. Chapman  
Rosemary Ryan Frohock  
Anne Dreifke Gootee  
Joseph A. Hafertepe, CSJ  
Joan Klutho  
Margaret Burns Maier  
Ann Weber Mathis  
Mary Carroll Maxwell  
Mary Jane Brandau Mersman  
Anne Miller  
Marie Boedges Minneman  
Betty Ruprecht Naert  
Nancy Schatzman Sackbauer  
Jean Greener Sanders  
Vivian Gettinger Williams  
Rose Dofing Winter

### Class of 1948 (21%)

Jane Sly Albers  
Sidonia Michelson Arnstein  
Thelma Munkres Bill  
Lorraine Camper  
Ann Quirk Carr  
Mary Ann Coghill  
Nancy Byrne Donovan

### Class of 1949 (22%)

Louise Benz Bieg  
Dolores Kinsella Box  
Elizabeth Newman Combs  
Mary Louise Streit Gutzler  
Mary Schumacher Haynes  
Rosemary Burke Hoffman  
Mary Jeanne Reedy Holmes  
Harriet Koutsoumpas, CSJ  
Kay O'Hanlon Kroeter  
Doris Leamy McGrath  
Gloria Lunsman Pahuski  
Gloria Monnig Schwarz  
Mary E. Smith  
Francis J. Smith, CSJ  
Ruth Bussmann Sullivan  
Patricia Meyer Swope  
Bernadine Thien  
Ann Graupner Viviano  
Mary Loretto Finazzo Walsh  
Mary Frances Dwyer Westphale

### Class of 1949 (22%)

Sue De Lisle Bowen  
Helen Cataldi Catanzaro  
Joan Prost Coerver  
Mary Lennemann Deppe  
Phyllis Fitterer Fennerty  
Mary Dettenwanger Freese  
Josephine Ferrario Galli  
Maurine Reiser Gerwig  
Carolyn J. Gioia  
Sara Sansone Glickert  
Catherine A. Lavin  
Joan P. McCartney  
Teresa Reid O'Connor  
Mary Prost Oenbrink  
Frances Battle Pfeifer  
Mary Jane O'Brien Schrader  
Peggy Hergenrother Sheehan  
Marcella Vogt Sweeney  
Lois Hough Thompson  
June Kronsbein Weber  
Elizabeth Roer Zehr\*

### Class of 1950 (20%)

Rosemary Toebben Blase  
Jeanne Leritz Callahan  
Margaret Camper, CSJ  
Dorothy Omelson Clayton\*  
Mary Murphy Delworth  
Lorraine Feldhaus Dreifke  
Betty Eifert Feld  
Betty Baerveldt Glickert  
Elizabeth Roehrig Hoover  
Virginia O'Brien Huber  
Joan Wiss Hunt  
Margaret Smith Johnson  
Dorothy Fries Ludolph  
Margaret Bocklage Meiners  
Marilyn B. Miller  
Audrey Klausner Montague  
Lily Vitt O'Connell  
Mary Pierce O'Connell  
Jacqueline Greener Puetz  
Agnes Blandina Sauer  
Frances Foster Schweppe  
Marianne Van Drisse  
Joyce Devine Woolsey

### Class of 1951 (22%)

Rosemarie Archangel  
Shirley Wilson Bub  
Mary Russell Cox  
Nancy A. Eckenroth  
Angela M. Eckstein  
Ruth Raupp Erker  
Mary Patricia Fowler  
Shirley Emge Geers  
Barbara Sullivan Gilliam  
Sonya Hennes Goldman  
Mary Nolan Hahn  
Jane Mitchelllette Hanneken  
James L. Hogan, CSJ  
Jean Anderson Holmes  
Marie Lyons Malecek  
Virginia Markham, CSJ  
Josephine Castiglione Milligan  
Margaret M. Nolan  
Joan Mitchelllette Ogden  
Rose N. Perotti  
Alberta A. Ruys, CSJ  
Elizabeth Pape Saum  
Mary Krekeler Schutzius  
Mary Voshardt Siebert  
Melba Stratmann Steinmann  
Patricia Trapp Strassburger  
Ruth O'Neill Stroble  
Catherine Miceli Tranquilli  
Dorothy Westhoff Zeitinger

### Class of 1952 (36%)

Thomasina Lowry Bena  
Patricia McCarthy Bimschleger  
Marietta Saunders Binz  
Ann M. Boland  
Cecilia M. Boland  
Jeanne Heroux Boyle  
Mary Rossen Byrne  
Maureen Burke Clarke  
Doris Lavin Cuddihoe  
Betty A. Curran  
Louan Marienau Dolan  
Lillian Yochimoto Fujihara  
Nina Bartsch Hansman  
Mary Clasquin Jenkins  
Mary Curotto Lang  
Sara Jane Berger Maloney  
Lois Knopp Missel  
Rosemary Pitlyk  
Mary Ann Kuhlman Stroh  
Marydelle Nesslein Thomaidis  
Marguerite Wardein Wegener  
Geraldine Peil Wuest

### Class of 1952 (36%)

Ann B. Adams  
Margaret Abbott Bagwell  
Arlene Toeben Bakula  
Caroline Murray Botwin  
Anne Niemeier Clifford  
Mary Ann Norman Coe  
Gina Borelli Ernst  
Anita Gulli Gedville

### Class of 1953 (23%)

Thomasina Lowry Bena  
Patricia McCarthy Bimschleger  
Marietta Saunders Binz  
Ann M. Boland  
Cecilia M. Boland  
Jeanne Heroux Boyle  
Mary Rossen Byrne  
Maureen Burke Clarke  
Doris Lavin Cuddihoe  
Betty A. Curran  
Louan Marienau Dolan  
Lillian Yochimoto Fujihara  
Nina Bartsch Hansman  
Mary Clasquin Jenkins  
Mary Curotto Lang  
Sara Jane Berger Maloney  
Lois Knopp Missel  
Rosemary Pitlyk  
Mary Ann Kuhlman Stroh  
Marydelle Nesslein Thomaidis  
Marguerite Wardein Wegener  
Geraldine Peil Wuest

### Class of 1954 (15%)

Nancy Raupp Blanton  
Margaret J. Burris  
Joan Charlier Butcher  
Anastasia Christen  
Genevieve Bianchi Fick  
Joan Gossin  
Mary Buhr Greene  
Dorothy Lynch Hellweg  
Josephine Gratiaa Hempen  
Mary Ellen Zwisler Kelly  
Marilyn Roeder Naes  
Madeline Zitt Oldeg  
Margaret Fautler

### Class of 1955 (39%)

Winifred Adelsberger, CSJ  
Jeanne Gantner Bruns  
Mary Reinhardt Burkemper  
Judith Curry Chickey  
Flo Mae Spack Conner  
Maureen Manning Doerr  
Ann Moore Duer  
Patricia Burke Gilmore  
Doris Nesslein Hanlon  
Josephine Gratiaa Hempen  
Maura Downey Klinging  
Josephine Wilt Laux  
Jacqueline Taylor Lederer  
Dorothy C. Lee  
Kay Gunn Martin  
Joan F. Maschmann  
Margaret Kelly O'Brien  
Kathleen Fahy O'Neil  
Virginia Treis Pelikan  
Carolyn Lewis Reintjes  
Bernadett Buckman Robison  
Mary Hoppe Sondermann  
Rita Sheahan Sullivan  
Nancy Murphy Thro  
Jane Hillner Tielke  
Lucy George Tucker  
Joy Auer Venverloh  
Patricia Degman Voss  
Marion Wyers

### Class of 1956 (20%)

Frances V. Cholet, CSJ  
Joanne DeGroot  
Rosalie Millman Efken  
Sally Walsh Haudrich\*  
Jo Ann Smith Henry  
Eleanor Hennigan Kennedy  
Marie Moonier Kovarik  
Mary Ann Brys Kuhn  
Mary Toenjes Seright  
Nadine Ahlert Sommers  
Dorothy Ensenberger Te Voert  
Gloria Whitfield  
Joan Murphy Yario

### Class of 1957 (17%)

Marjorie A. Albers  
Mary Carol Anth, CSJ  
Carol Brouillette, CSJ  
Nina Kassing Bryans  
Joyce Buckler, CSJ  
Sue Kaiser Ebanues  
Rosemary Fitzburgh Erman  
Virginia A. Fannin, CSJ  
Carol E. Giblin  
Mary Lou Miller Kleine  
Carol Shaughnessy Miller  
John V. Mindak, CSJ  
Rosemary Myers Pfeifer  
Carol Gutting Schlattman  
Lorraine Walsh, CSJ

### Class of 1958 (17%)

Mary Ann Dodge Carter  
Maureen Lesko Connelly  
Judith Seibert De Vries  
Joan McKenna Dolan  
Maggie M. Faust  
Joann Petty Gross  
Angeline Marino Heumann  
Lelah Gibbs Leahy  
Hallie Perry McNamara  
Jacqueline Post Miller  
Mary Lee Green Oidtmann  
Barbara A. Palermo  
Susan Nash Peller  
Martha Re  
Merlyn Price Schack  
Mary Shryock, CSJ  
Patricia Reddan Van Rhein  
Nancy Flanigon Verker  
Joan Clasquin Weber

### Class of 1959 (17%)

Ann B. Adams  
Margaret Abbott Bagwell  
Arlene Toeben Bakula  
Caroline Murray Botwin  
Anne Niemeier Clifford  
Mary Ann Norman Coe  
Gina Borelli Ernst  
Anita Gulli Gedville

Mary Ann Vatterott Holden  
Carol Karst Kahlmeyer  
Marilyn Mikes Leonard  
Kate Daly Lottes  
Margery O'Rourke McNally  
Carol McCormick McTigue  
Jean M. Rachel  
Margaret Marik Sommer  
Marianne Bubash Walbridge  
Afra Jean Leavitt Walker  
Clarie Saenger Weiler  
Mary Doreley Works

### Class of 1960 (12%)

Diane Schmitz Adams  
Carroll Cunningham Baechle  
Carol Brigham Dorr  
Marian Hite Dunham  
Marise Eaton Hoffmann  
Barbara Veidt Jenkins  
Mary A. McKenna  
Susan Ries Meyer  
Ann Maher Michalski  
Mary Rogge Miller  
Julia Roerkohl Okenfuss  
Kathleen A. Quinlan  
Joan Fegan Ramatowski  
Marlene Block Westrom  
Barbara Krausel Wick  
Carolyn Carroll Zwart

### Class of 1961 (21%)

Bette Saunders Beron  
Patricia Lombardo Biffignani  
Mary Bittner  
Kathryn Karleskint Blumenkamp  
Mary Weber Bulger  
Camille Collini, CSJ  
Marilyn Montileone Dell'Orco  
Joan Stoviak Diehl  
Mary P. Fowler  
Maureen Norwich Gaertner  
Joan Wavering Grindon  
Carmen Villaobos Hodge  
Adrienne Musial Kennedy  
Carol Engelhard Kloud  
Linda Kurz  
Janis Luehder Lechien  
Hilda Bantle Lowell  
Carol Clement McDonough  
Dolores Bommarito McGinnis  
Elizabeth A. Messmer  
Marilyn Miller, CSJ  
Margie Gerlach Moranville  
Joan Schafers Neumarker  
Carol Haefner O'Brien  
Mary Lee Peckham  
Ruth Kloud Politte  
Carole Sullivan Scaring  
Joanne Eisele Schroeder  
Patricia Stack Seiler  
Carole Tighe Sheldon  
Sally Hoing Shircliff  
Marguerite L. Wefel  
Doris Prag Wilson

### Class of 1962 (10%)

Glenda Becker  
Mary Matejka Behrmann  
Theresa Kochanski Davidson  
Betty Huber Drozski  
Dolores Wolters Gonzales  
Sabina Mainieri Guidry  
Julie Guillot, CSJ  
Judith Reddan Keran  
Roxanne Weyerich Kroeger  
Paula M. Lorsbach  
Carolyn A. Osiek, RSCJ  
Carol Roleke Rotert  
Helen Ryan, CSJ  
Elizabeth Pape Saum

### Class of 1963 (20%)

Catherine Brinkman Babich  
Mara M. Baun  
Judith A. Clarke  
Janice Breher Cordes  
Linda Shamel Delaney  
Joan Theis Gagnepain  
Peggy Hornsby Gauthier  
Margaret Schmitt Gehring  
Margaret M. Gregg, CSJ  
Leota Hynek Gunn  
Janet Berninger Henderson  
Kathleen E. Hiltner  
Margaret M. Lyons  
Mary Alexander Marcelly  
Doris Masek Meyer  
Diana Johnson Mulick  
Mary Ellen Murphy  
Mary Britt Murrin  
Mary Ann Noonan  
Patricia O'Connell  
Barbara Kesting O'Shaughnessy  
Mary Coughlin Pinney  
Mary L. Langdon Preis  
Julie Percy Quinn  
Mary Deck Rabbitt  
Ruth Boland Sawatzki  
Myra F. Styffe  
Carol Weber Swzeda  
Carol Putnam Tallent  
Mary E. Tighe  
Judith A. Toohill  
Rosemary Coleman Zone

### Class of 1964 (22%)

Geraldine Boehler Angoli  
Henrietta Bahr Basler  
Barbara Belovich Beckerman  
Julianne Lamm Blow  
Barbara Farrell Contat  
Patricia J. Durso  
Kathleen Daubel Elfrink  
Frances K. Farraher  
Margaret Gunn Fowler  
Mary Schulte Fritz  
Kathleen Pugh Griffin  
Margaret Winkelmann Harder  
Elizabeth Craven Hartney  
Nancy Mullen Heinbecker  
Judy Swimley Heller  
Joan Kristof Hoffmann  
Carolyn Kuciejczyk Johnson  
Bernice Zygumunt Krauze

Judith C. Miniaci, CSJ  
Marilyn Murphy  
Mary Beth Paul  
Virginia Pfeifer  
Diane R. Pott  
Joan Yates Reiter  
Roxanne E. Rhoades  
Judith Hegeudus Ruder  
Elizabeth Vernile Scherz  
Elizabeth Hurst Shafer  
Adolphine Brungardt Shaw  
Barbara G. Smith  
Ruth Stuckel, CSJ  
Karen Jungewaelter Thaman  
Mary Schaefer Vander Linden  
Kathleen Sappington Woodworth  
Jeanene Yackey, CSJ

### Class of 1965 (21%)

Paula Picco Andrew  
Noel Hackmann Barrett  
Rafaela Amantea Blum  
Mary Gertken Brady  
Diane M. Calcaterra  
Mary Sack Cox  
Mary Moran Dolan  
Roberta Nunns Flynn  
Rita Solovitz Fust  
Karen DeGuire Gedera  
Phyllis Hogan Grosscup  
Kathleen Toohey Gunn  
Rosemary Hess Haeckel  
Lucille E. Hahn  
Patricia Dunn McAllister  
Kathleen McCoy McGinnis  
Susan Medgyesi-Mitscha  
Dorothy Pazdernick Meyers  
Colette Crowley O'Brien  
Mary Macelwane Pero  
Yvonne DeMange Schenk  
Mary Oberle Thomas  
Mary Hurst Thurmond  
Nancy Turner Todd  
Jan Buxton Unterreiner  
Carmeline Strano Utz  
Antoinette Quattmann Walters  
Winifred Waring  
Anne Sullivan Williams  
Phyllis Goedert Wilson  
Dorothy Reichert Wodraska

### Class of 1966 (18%)

Paula Montie Bakula  
Joanne McGinn Brady  
Dorothy Dallas Caspari  
Marilyn Stoll Chambers  
Kathleen Atchity Coco  
Sharon L. Downer  
Patricia Cova Eickhorst  
Mary F. Ferguson  
Carol Halbert Fox  
Joyce A. George  
Elaine Endicott Heine  
Elizabeth Burton Holmes  
Patricia Cobb Jones  
Florence Keena Juergens  
Donna Bubela Landau  
Sally Anderson Lukasiewicz  
Elizabeth Apke Maginn  
Sandra Mershon  
Beverly A. Rafter  
Judith Logan Ragan  
Linda Bomanz Reuling  
Barbara Langenecker Rieser  
Mary Martin Schenkenberg  
Virginia Hendrick Scherer  
Mary Erat Sutkus  
Mary Webb Thomas  
Joan Bayot Vatterott  
Mary Ann Plassmeyer Villella  
Kay LaMear Walsh  
Dorothy Bergfeld Wenciewicz  
Lynda Zolg, CSJ

### Class of 1967 (16%)

Barbara Attehn  
Carol A. Boeding  
Marie Veith Bondick  
Mary Welf Burst  
Geraldine L. Dutzler  
Joan LaMear Duggan  
Alice Ashcroft Dumonceaux  
Mary Sheehan Eckstein  
Mary Koening Edler  
Elizabeth Angelides Gildehaus  
Susan Klevorn Green  
Cheryl C. Hansmann  
Mary Kistner Henroid  
Marianne Hamtil Hockenhill  
Carol Mayfield Mantia  
Joan E. McIlroy  
Martha Musial Miller  
Mary D. Oades-Souther  
Mary Hanselmann Pelikan  
Patricia Finnegan Potts  
Mary Mall Schuster  
Dotty Steele  
Barbara Suelentrop Till  
Carolyn Jaromack Wagner

### Class of 1968 (25%)

Susan Kruse Allgire  
Joan Worsack Bauer  
Yvonne Barera Bauer  
Paula Oberle Black  
Carolyn A. Brown  
Madonna Houltram Brown  
Jeanne Jurgens Donovan  
Mary Dulle Douglas  
Virginia Dailey Gerdes  
Frances West Gordon  
Janet Reuther Heist  
Andrea Miller Henske  
Veronica Gubb Hicks  
Mary L. Hummert  
Julianne Iwersen-Niemann  
Peggy J. Keilhof  
Veronica Murray Konczal  
Jane Hadank Link  
Mary Ann Keiper Mallon  
Joan Taucher Martin  
Lorene Bremmer McGrath  
Mary Schulte Milam  
Gayle Miller Mohr

\*Deceased

\*Deceased



Joy Janoski Moore  
Marilyn A. Roeder Naes  
Janice Matthews Nelke  
Jessie Randazzo Nelke  
Barbara Gabreski O'Brien  
Kyllene McClintock Oder  
Cathleen Majka Ott  
Mary Mack Schuppe  
Ann Schumacher Schwartz  
Janet Bedel Shea  
Eileen Nevole Shilesky  
Erika Bantle Smith  
Kathleen Neenan Steed  
Mary L. Walter  
Mary Bruno Werle  
Cheryl Bartlett White  
Mary Joan Woods

**Class of 1969 (19%)**

Kathleen Kenny Arenz  
Elizabeth Ernst Austin  
Judith Kinkel Bell  
Ruth Hell Brooks  
Martha Bruemmer-Yalov  
Maureen Rafter Crowley  
Linda Kemper Daniels  
Rosemary A. Denson  
Mary Barr Elliott  
Claudia Fechner Ennis  
Karen Davinroy Fernandez-Salvad  
Dorothy Fleck  
Ann Catanzaro Garavaglia  
Suzanne Seaman Halloran  
Linda Laury Husson  
Carol Callier Jakobovits  
Madelynn Janson Kennebeck  
Maureen A. Kennedy  
Anita Buie Lamont  
Elizabeth Gravagna Langsdorf  
Diana Brooks Leslie  
Beverly Bledsoe McCabe  
Rita Slazinik Mayer  
Yvonne Fernau Mess  
Rita Allhoff Mitchell  
Kathleen Michel Moloney  
Judy Brischetto Murnan  
Dela Doerr Ng  
Mary McDonald Olthoff  
Dolores C. Patrick  
Mary Desalvo Paul  
Claudia Schiavone Raab  
Rebecca Burk Russell  
Kathy Martini Saier  
Jane Ryan Schnepel  
Arlene Skrob Seymour  
Mary Bokamper Sharek  
Mary L. Sheppeck  
Jacqueline Schallom Stevison  
Patricia Picco Thomas  
Carol Kuehn Voss

**Class of 1970 (13%)**

Linda K. Carter  
Patricia Groshans Clasy  
Colleen Clair Cole  
Judith A. Fitzgerald  
Susan McGuire Geile  
Alice E. Harper  
Francine Zanitsch Hobein  
Mary Sullivan Hodge  
Peggy Grush Hoekstra  
Joan Schwarz Juelfs  
Nancy McCormick Marley  
Camille Falk Martens  
Carol Branson McCormick  
Kathryn Kluska McNamara  
Jane F. Miller-Hooper  
Elaine Unser Mills  
Judith Cyran Mold  
Sandra K. Morgan  
Barbara Portell Mottin  
Ruthanne Ahlemeyer Palmer  
Mary Boeckmann Riley  
Terry Weil Rogers  
Rosanne Gorman Smythe  
Jeanette Altepeter Wamser  
Stephanie Kuszaj Welling

**Class of 1971 (25%)**

Diane Medic Abernathy  
Joan Simms Andrew  
Marilyn Schmidt Ash  
Margaret Dulle Barbero  
Mary J. Barrett  
Jane F. Behlmann, CSJ  
Linda L. Bergmann  
Pauline Bozdech-Veater  
Catherine S. Broughton  
Judy Kaiser Cadice  
Patty McLain Casey  
Elaine Ruzicka Donovan  
Patricia A. Erb  
Joan S. Gray  
Janice Koles Hartmann  
Mary A. Hennessy  
Sharon Metz Hightower

Sandra Garner Hoerchler  
Susan Schnappauf Hof  
Paula Eckhard Hopkins  
Barbara A. Hummel  
Janet Dierks Hutz  
Marilee Brethorst Ingoldsby  
Joan Dubuque Jones  
Colleen C. Judge  
Mary Hutchison Kappel  
Paula Blake Key  
Melissa Griesedieck Kotson  
Noreen Kennedy Krispin  
Isabelle Fracchia Lenhardt  
Rita Schenk Lusignan  
Frances Lazzari McDaniel  
Margaret Suhre Meyer  
Celia Muntges  
Elaine Jacquin Notis  
Linda Stewart Patterson  
Jane P. Podleski  
Mary J. Polit  
Carol Hemler Quenette  
Patricia Bubela Roehr  
Rosanne Santino Roth  
Margaret Shea Smetana  
Rosemary Sullivan Smiley  
Sally Keefer Soehngen  
Joanne Arnold Strathearn  
Mary Young Sullivan  
Donna Dlugos Sunderdick  
Mary Guyol Sundry  
Kathleen M. Thomas  
Mary Unverferth Toczykowski  
Elna Randazzo Trost  
Mary P. Ujhelyi  
Marie C. Violetta  
Janice M. Wickenhauser

**Class of 1972 (20%)**

Patricia Cutchens Ahrens  
Vicki Blell Bahr  
Karen Kissel Bartlett  
Stavra Gianoulakis Bayer  
Loretta Watness Brown  
Bridget Gunn Calcaterra  
Deborah Menetre Casey  
Susan Peter Clancy  
Patrica Dodson Corbett  
Suzanne Koenig Cross  
Kathleen Dailey  
Linda Koehler Deckert  
Constance Boschert Diekmann  
Mary A. Doyle  
Yolanda T. Evans  
Diane White Grelle  
Janet St. Onge Grossman  
Mary Condon Haasis  
Susan Schulte Hammel  
Helen Poetz Hawksley  
Paula Obertino Karpman  
Deborah Wilshusen Koob  
Barbara Hochenedel Lindsay  
Joanne Poelker Loftus  
Judith Diekmann Monroe  
Margaret A. Porcelli  
Cynthia Raupp Putman  
Peggy Hicks Renard  
Karen Floyd Savage  
Rita Hill Schwager  
Rhonda Schweizer  
Suzanne Moran Schweizer  
Rose M. Sloan-Mercer  
Anne Marie Tilly  
Mary Hainen Van De Riet  
Carol Gund Wolken

**Class of 1973 (15%)**

Kathleen Kendregan Beyer  
Vicki McInroy Briggs  
Joan Christoffel Crudden  
Catherine A. Dulle  
Laura Hines Dunsmoor  
Susan Schinner Durfee  
Jacqueline Engel Frisbee  
Margaret Ryan Intraivia  
Pamela Sloomfan Kanter  
Sandra Meyer Leibrecht  
Patricia Rafferty Luebbers  
Mary E. Massey  
Pamela Michener-Woolsey  
Patricia A. Moore  
Alison Grill O'Brien  
Wendy Ziegelbauer Overkamp  
Geraldine Pitti  
Barbara Sallwasser Ridenhour  
Mary C. Steuterman  
Catherine Quatmann Stoverink  
Margaret M. Stratmann  
Janet Walkowiak Striegl  
Judith Goltschman Sturm  
Kathleen Winston  
Mary Duncan Wolfe  
Karen Carbone Zummo

**Class of 1974 (13%)**

Mary S. Bick  
Jane Turcin Bokowy

Patricia J. Bubash  
Christine Rubin Campbell  
Dace Cottrell  
Marsha Sitton Dedrick  
Alexia Dorochoff Goodreau  
Mary Kiske Herr  
Rhonda Overton Hurt  
Joann Augsburg Jana  
Nannette Marking-Camuto  
Mary L. Nagel  
Helen Reuther  
Marianne O. Sanders  
Denise Vogt Sausser  
Katherine Boos Sellenrick  
Keith Torretta  
Sharon Walker  
Jo Anne M. Westerheide  
Susan Carmody Zerjav  
Gerry Zobel

**Class of 1975 (11%)**

Madonna Mueller Atwood  
Karen Lemmons Bohr  
Darien M. Brueggen  
Bernadette Stochla Buscher  
Mary Tranel Downes  
Christine Kriegsies Elmore  
Barbara Allinger Lanfer  
Susan T. Lenihan  
Eileen Koebel Meyer  
Rita J. Michalka  
Deborah Meyerricks Morris  
Regina Wikete Newmann  
Marilyn Vitale Pastorek  
Alice Serrano  
Dianne Petersen Strutyanski  
Patrice Robertson Walther  
Diane Laguna Witthaus

**Class of 1976 (14%)**

Susan Rothery Allen  
Kathleen Kreisch Billingsley  
Mary Boehm Castello  
Carolyn Caudle  
Victoria Churchill  
Denise Gregory Custer  
Cynthia Garmholz  
Nancy Boos Georgen  
Anne Gerst  
Thelma Hutt Kadas  
Judith Guignon Kusnierkiewicz  
Judith House Larwill  
Francis Taylor Powers  
Barbara A. Reilly  
Patricia Lamb Simonis  
Ann Mangelsdorf Stein  
Margaret A. Stiegemeyer  
Kathy A. Wagener  
Patricia Malon Watson

**Class of 1977 (13%)**

Elizabeth Miller Amelotti  
Susan M. Antczak  
Janet Mazzola Barmeier  
Janey Cross Dailey  
Olga Perino Daman  
Ann M. Feld  
Susan Williams Ferguson  
Joann Bundschuh Gallen  
Karen Tinkham Griesedieck  
Terese Wagner Hughes  
Patricia Ravarino Koke  
Celine Wuellner McEwan  
Mark Messersmith  
Joan Nelke-Udziela  
Pamela Canull Nicholson  
Marianne Petru  
Roseanne Petru  
Lynn Heibel Raynor  
Susan Luechtfeld Reeves  
Delores Roth  
Claudia J. Skwiot  
Christine A. Vonder Haar

**Class of 1978 (10%)**

Geraldine Hausdorf Bareilly  
Allys A. Bell  
Charlotte Brune Bishop  
Cheryl Straub Broekelmann  
Christina Kjar Buehlman  
Karen Kesler Gender  
Reba Jordan Holt  
Diane Ptasznik Kay  
Lisa Hanson Kolemmainen  
Donna Schulte Leonard  
Patricia Lofton  
Robert L. Maes  
Cindy Dunn Reis  
Jane Brook Sullivan  
Anita L. Tissi

**Class of 1979 (12%)**

Michael G. Banovz  
Louise Chapman Brandenburg  
Christine Sheehan Clark  
Judith Doll Duda  
Frank P. Ferrario  
Sharon K. Frank  
Susan M. Franklin  
Ann L. Glosemeyer  
Alma Meyer Hogenmiller  
Rosanne Koenig Hutchins  
Mary Anne Krapek Jerabek  
Karen Pfitzinger Kehoe  
Suzanne Viox Montgomery  
Maureen O'Day Nicolas  
Grace Bowman Paddock  
Sandy J. Rose  
John A. Roth-Roffy  
Nancy Puetz Ruzicka  
Rhoda O'Meara Stackhouse  
Joyce M. Sudhoff

**Class of 1980 (13%)**

Jacquelyn Wiesman Artstein  
Heather Frew Bonn  
Marie Boykin  
Christina Storey Buschbacher  
Jane Foristek Dostal  
Joan Koziatsek Egan  
Lydia Powers Elliott  
Bryna Cutter Franklin

Lucy A. Griesedieck  
Claudia Hayduk  
Deborah D. Higgs  
Angela M. Hunter-Donelon  
Michelle A. McClees  
Gabrielle Chadeayne Noonan  
Amy Sullivan Olszewski  
Christine Manning Perrey  
Martin Sauer  
Mary Davis Scherle  
Diana Schuler  
Michelle Tressel  
Margaret Roth Wester

**Class of 1981 (17%)**

Carol J. Boyd  
Robert Chen Hsien  
Irene Douros  
Lisa Rustige Flick  
John J. Geary, Jr.  
Mary E. Grumich  
Sharon Lyons  
Janice S. Martin  
Bridget Dolan McCormick  
Christine Cornelis McLaughlin  
James F. Moore  
Jeanne Dulle Moore  
Leanora M. Moore  
Emily Macinski Murphy  
Jacquelyn J. Nevala  
Kathryn Eames Nixon  
Donna J. Richards  
Lea Brown Rogala  
Bruno J. Sonnino  
Marion Hess Sweeney  
Janell Driessen Thompson  
Virginia Niedringhaus Trueblood  
Patricia D. Weekley  
Judith A. Willard

**Class of 1982 (6%)**

Patricia Kaiser Brusati  
Teresa Watt Carroll  
Ann O. Dryden  
Katherine McCue Engelhardt  
Kae Lemay Erwin  
Karen M. Keefer  
Keith M. Mosier  
Karen Scribner Trigg  
Susan C. West

**Class of 1983 (8%)**

Rich H. Blase  
Karen Crannell Bradshaw  
Ruth Goldberg  
Helen M. Heilich  
Barbara J. Hufnagel  
Grace C. Muckerman  
Brenda A. Nahlik  
Deirdre Noonan  
Judith Altemueller Obermark  
Maureen P. Slattery\*  
Mary Brinkmann Straatmann  
Kathryn Seagrist Vassalli  
Melody Pearce Watts  
Mary D. Wimmer

**Class of 1984 (9%)**

Barbara Wollenberg Allen  
Susan C. Augsburg  
Anita M. Bocclair  
Michael S. Brusati  
Barbara H. Bussen  
Mary G. Clarkson  
Judith Pace Eddy  
Linda Appelbaum Emery  
Stephanie Cohen Howe  
Carolyn A. Mall  
Karen M. Pearson  
Holly L. Schroeder  
Colleen Mealer Swanson  
Kathleen M. H. Wendland  
Gilbert B. Williams

**Class of 1985 (7%)**

Carol Beatty Barthelmas  
Monica L. Bauer  
Amy L. Becker  
Joan W. Flanagan  
Penny Freihoff Havlik  
Carole N. Lasky  
Mary S. Marx  
Kimberly M. Passalacqua  
Janice Fischer Puhl  
Mary Estelle O'Keefe Simpson  
Maria L. Timper  
Karen L. Zaenker

**Class of 1986 (4%)**

Donna Wich Ahrens  
Mary Boyle De Witt  
Mary E. Guseman  
Joan Puetz Hannegan  
Linda L. Hom  
Teresa J. Maloney  
Mary K. Poell  
Christine Meyer Polys

**Class of 1987 (13%)**

Steven J. Aubuchon  
Ann M. Bachmann  
Cynthia S. Bertts  
Victoria Kraushaar Binder  
Theresa Bryant Blaskiewicz  
Cathy A. Brandhorst  
Moir Pons Byrd  
Mary F. Daly  
Cynthia Heald Dameron  
Jill E. Davis  
Vivian Groover Daw  
Teri L. Diekmann  
Marilee Hook  
Mary Kelly Horace  
Roseanne Landholt Donato  
Mary P. Merlo  
James R. Morgan  
Mary M. Naccarato  
Leroy G. Nagle  
Sharon K. Overman  
Maryann Peacock  
Lana R. Pepper

Janet F. Soest  
Margaret Gravat Stelloh  
Myra Foulke Styffe  
Nancy L. Ulakey  
Carol A. Voelker

**Class of 1988 (10%)**

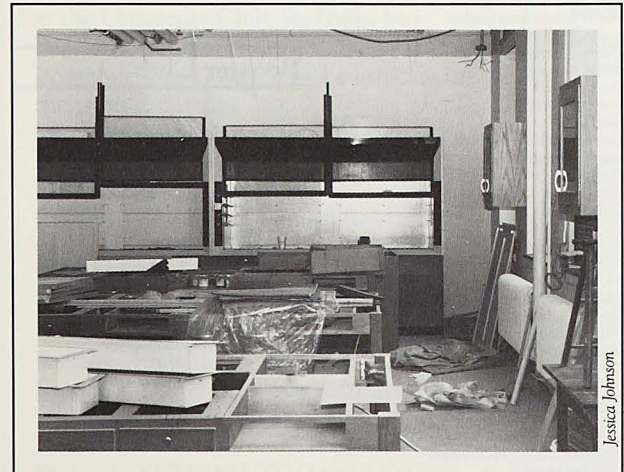
Ethan W. Allen  
Gary T. Bagsby  
Ahzad H. Bogosian  
Diane Goessling Bryan  
Karen Cope  
Laura A. Davis  
Rebecca G. Fassler  
William D. Foster Jr.  
Darryl L. Franklin  
Richard M. Fuhrmann  
Janet Gravagna  
Brendan J. Higgins  
James A. Hinck  
Corrine R. Hunter  
Betty J. Jones  
Lois A. Jones  
Linda Stucklisch Kirtley  
Helen K. Klenklen  
Francesca Neri Kopsky  
Deborah Wines Nahrung  
Carrie F. Oslager  
Raymond J. Pettyjohn  
Karen Preusser  
Therese T. Schuchard  
Sherry Marie Taylor  
Michael W. Wilcox  
Sarah Borucki Wymore  
Janet L. Zerr

**Class of 1989 (7%)**

Lisa Moritz Beckerman  
Sandra Davis  
Roberta Doelling  
Eloise Foss  
Darren George  
Margaret Hesse  
John Kammerer  
Randall Kruep  
Virginia Lawson  
June Lee  
Nancy Linhoff  
Jeffrey Mudd  
Andrew J. Multisch  
Marilyn A. Pepper  
Lori Reed  
Marianne K. Russell  
Theresa Signorelli  
Julie Spier  
Margaret Winkleman

**Parents**

Mr. Kenneth Barkett  
Hon. and Mrs. Joseph J. Barr  
Mr. and Mrs. Ronald Basler  
Mr. and Mrs. Joseph Bauers  
Mr. and Mrs. Ralph R. Beckerman  
Mr. and Mrs. August A. Bieg, Jr.  
Mr. and Mrs. Wallace G. Bourneuf  
Betty A. Bruno  
Mr. and Mrs. Iginio Cairra  
Mrs. Peggy M. Carney  
Henry Clever, Jr.  
Mr. and Mrs. Allen Coolsaet  
Mr. and Mrs. Anthony W. Crowley  
Mr. and Mrs. Arthur L. Day  
Alvin Dietz  
Patrick Donnelly  
Mr. and Mrs. Donald M. Driessen  
Dr. and Mrs. Thomas F. Egan  
Kae Erwin  
Dr. and Mrs. F. J. Ewers, Jr.  
Florence Feagan  
Mr. and Mrs. Richard J. Feld  
Mr. and Mrs. Peter Ferrara  
Raymond Fienup  
Mr. and Mrs. George W. Fox  
Mr. and Mrs. Robert W. Freese  
William Friedman  
Mr. and Mrs. Lester W. Fries  
Anthony Gandolfo  
Mr. and Mrs. Warren Glickert, Sr.  
Ruth Goldberg  
Dr. and Mrs. Thomas H. Gootee  
Mr. and Mrs. John Grellner  
Mrs. Donald Gunn\*  
Mr. and Mrs. William B. Guyol  
Patrick Hambrough  
Mr. and Mrs. Donald Heaman  
Josephine Hempen  
Mr. and Mrs. Kenneth F. Henning  
Mary Henrich  
John Hinrichs  
Mr. and Mrs. Paul F. Hochenedel  
Mr. and Mrs. Walter Johnson  
Dr. and Mrs. Louis Kadas  
J. Vincent Kennedy  
Mr. and Mrs. Paul Koenig  
Mr. and Mrs. Jack Kynion  
Mr. and Mrs. David Lambrich  
Mr. and Mrs. G. Light  
Mr. and Mrs. Matthew J. Maloney  
Albert McClees  
Mr. and Mrs. Robert G. McKelvey  
Mr. and Mrs. Eugene Merello  
Dr. and Mrs. Francis Miller  
Mr. and Mrs. Leo F. Milligan  
Frank Moeller  
Joan Moss  
Mr. and Mrs. John Mudd  
Mr. and Mrs. Charles F. Mueller  
Mr. and Mrs. Lawrence Mullen, Jr.  
James Murphy  
Marie A. Niemeier  
Dorothy G. Nonnenkamp  
Mr. and Mrs. James E. Ogden  
Mr. and Mrs. Chester Patton  
Mr. and Mrs. Robert H. Pohlkotte  
John Powers, Jr.  
Mr. and Mrs. Virgil C. Puetz  
Mr. and Mrs. George J. Renard  
Mr. and Mrs. Paul J. Rodgers  
Mary Hortense Ryan  
Mr. and Mrs. Walter H. Sauer  
Mr. and Mrs. Joseph E. Schneider  
Mr. and Mrs. Albert F. Schoeneider  
Mr. and Mrs. Joseph E. Schweppel Jr.  
Mr. and Mrs. Anthony J. Sestric  
Mr. and Mrs. Harry Simpson  
Mr. and Mrs. John T. Slattery



**Chemistry Labs Near Completion**

\*Deceased



Julia G. Smith  
Mr. and Mrs. William Sommer  
Mr. and Mrs. Roger Spiller  
Mr. and Mrs. Robert J. Stein  
Mr. and Mrs. Joseph T. Theby  
Mr. and Mrs. Thomas Thomaides  
Mr. and Mrs. Victor Tuckett  
Carol Wallace  
Mae Weyerich  
Mr. and Mrs. Gilbert S. White  
Mr. and Mrs. J. Wolf  
Mr. and Mrs. John D. Westerheide  
Alberta Woods  
Mr. and Mrs. James Wuellner  
Ralph Zerr  
Kathryn Zwislser

### Friends

Anonymous  
Richard P. Anth  
Dorothy Baumstark  
Rose Baumstark  
Mr. and Mrs. Ed Bielicki  
Mr. and Mrs. Van-Lear Black III  
Isabel Ceriotti  
David Choemeau  
Nick Colarelli  
Patrick P. Crane  
Mr. and Mrs. Joseph T. Doyle  
Roscoe Eatherly, Jr.  
Mr. and Mrs. Bernard A. Edison  
Mr. and Mrs. James W. Edmondson  
Nancy Ellis-Ordway  
Mr. and Mrs. Ronald C. Giles  
Mr. and Mrs. George S. Graff  
Mr. and Mrs. August L. Griesedieck  
Mr. and Mrs. Keith Gunther  
Frank J. Guyol, Jr.  
Marie J. Hanss  
Mrs. Henry A. Hassett  
Jack Heidt  
Mr. and Mrs. Daniel L. Human  
Mr. and Mrs. Gerald C. Hurt  
Mr. and Mrs. Francis L. Kenny, Jr.  
Mr. and Mrs. Karl Krause  
Mr. and Mrs. Frank Licavoli, Sr.  
Lucy and Stanley Lopata  
Most Reverend John L. May  
Joseph McCrate  
Msgr. Robert L. McCarthy  
Mr. and Mrs. John T. McGrath  
Norma McVey  
Mr. and Mrs. Michael E. Miller  
Renee Mitchell  
Marcy Murphy  
Most Reverend Edward J. O'Donnell  
Mr. and Mrs. Thomas J. O'Toole  
Mr. and Mrs. Kenneth Ohlemeyer  
Mr. and Mrs. Peter A. Puleo  
Mr. and Mrs. Fred J. Rosenbaum  
Mr. and Mrs. Merle M. Sanguinet  
Alvira Schlueter  
Mary Ann Schmelig  
Mr. and Mrs. Robert J. Senkowsky  
Mr. and Mrs. Vincent E. Shaw  
Mr. and Mrs. John J. Sheehan  
Mr. Joseph A. Sheehan, Jr.  
Betty Smyly  
Mr. and Mrs. Frederick M. Steinbach  
A. Jean Stoner  
Dr. Gladys E. Vail  
N. R. Van Dinter  
Mr. and Mrs. Gregory B. Vatterott  
Ms. Marian Vonder Haar  
Mr. and Mrs. Hy Waltuch

### Faculty and Staff

Mary Abkemeier  
Mary Carol Anth, CSJ  
Bert Barry  
Jane C. Behlmann, CSJ  
Pauline Bellavance  
Marie C. Bennett, CSJ  
Linda J. Bufkin  
Donald P. Burgo  
Robert Butler  
Margaret Camper, CSJ  
David A. Clark  
William Close  
Rosemary Connell, CSJ  
Janet S. Crites  
Jean Crowe  
Mary Charity Dalton, CSJ  
Thomas Dent  
Richard Dippel  
Meneve Dunham  
Michael Ewald  
Frank Ferrario  
Mary Louise Fiedler, CSJ  
Nannette Ford  
William Foster, Jr.  
William Friedman  
Tommy Frison  
Mary Gaydos, CSJ  
Maria Grellner  
Bruce Halliday  
Janice Hawk  
Gloria Heaman  
Richard Hinners  
James L. Hogan, CSJ  
Mary Horace  
Dee Hubbard  
Mary F. Jackson  
Jessica Johnson  
Denise Keller  
Henry Knickmeyer  
Carole Lasky  
June Lee  
Susan Lenihan  
Peggy Liggett  
Jennifer MacKenzie  
Jeanne Manley  
Brian McCue  
Lee McKinney  
Edward Medler  
Barbara Meyer  
Marilyn Miller, CSJ  
John Vianney Mindak, CSJ  
Peggy Musen  
Mary E. Newton-Slegesky  
Mary Alfred Noble, CSJ  
Lee Nolting  
Lee O'Donnell  
Karen Olson  
Mel Patton  
Sean Peters, CSJ  
John Philips

Gale Rice  
David Risch  
Alberta Anne Ruys, CSJ  
Patrick Schuchard  
Joseph Scotti  
Carol Sestric  
Mary Shryock, CSJ  
Matilde Sonnino  
Ann Spiller  
Mary Stephen  
David Stiller  
Michael Sullivan  
Carla Tinoco  
John Van Almsick  
Mary Lee Walter  
George Wang  
Jean Wasko  
Michael Wilcox  
Bonita Williams  
Ann Williamson  
Irene Wolfe  
Jeanene Yackey, CSJ  
Tom Yahraes  
Gary Zack  
Lynda Zolg, CSJ

### Corporations, Foundations, and Organizations

Allen and Josephine Green Foundation  
Anheuser-Busch Companies, Inc.  
Archdiocese of St. Louis  
Boatmen's Bancshares, Inc.  
Caleb C. & Julia W. Dula Educational and Charitable Foundation  
C.J. Thomas Company  
Commerce Bank of St. Louis  
Commerce Bancshares  
Conner Ash & Company  
Edward C. Garvey Foundation  
Emerson Electric Company  
Enterprise Leasing Company  
Farmers Insurance Group  
Fisher Controls International  
Flooring Interiors, Inc.  
Fontbonne Alumni Association  
Fontbonne Athletic Association  
General American Charitable Foundation  
General Dynamics Corporation  
George Warren Brown Foundation  
John Allen Love Charitable Foundation  
Jordan Charitable Foundation  
Kewaunee Scientific Company  
Laclede Gas Charitable Trust  
Maplewood Kiwanis Club  
Maritz, Inc.  
Master Builders, Inc.  
Mercantile Bancorporation  
Midcoast Aviation  
Millstone Foundation  
Missouri Arts Council  
Missouri Colleges Fund  
Mitch Murch Maintenance Management  
Moeller-Reimer Company  
Monroe Auto Equipment Company  
Monsanto Company  
Morrison's Custom Management  
Norman J. Stupp Foundation  
Petrolite Corporation  
O'Toole Phelim Real Estate Company  
Plaza Motor Company  
Pohlkotte Ressler Corporation  
Preferred Risk Insurance Company  
Regional Cultural & Performing Arts Council  
Reliable Life Insurance  
Schmiezing's Millbrook Cafe  
Service Travel Company  
Sisters of St. Joseph of Carondelet  
St. Louis Province  
Southwestern Bell Foundation  
St. Louis County Water Company  
Stupp Brothers Bridge & Iron Company  
Sverdrup Corporation  
The Coca Cola Company  
Travel Agents International  
Trio Printing Company  
US Department of Energy  
Union Electric Charitable Trust  
Vatterott Foundation

### Matching Gift Companies\*\*

ACF Industries, Inc.  
Alcoa Foundation  
Allstate Insurance Companies  
American Airlines, Inc.  
American Home Products Corporation  
American Mutual Insurance Companies  
Amoco Corporation  
Anheuser-Busch Companies, Inc.  
Arthur Andersen & Company  
AT&T  
Becton Dickinson and Company  
The Boeing Company  
Boise Cascade Corporation  
Bristol-Meyers Company  
Brown Group, Inc.  
Burlington Northern, Inc.  
Caterpillar, Inc.  
CIGNA Corporation  
Citicorp/Citibank  
The Coca-Cola Company  
Comerica, Inc.  
Consumer Program Inc.  
The Continental Corporation  
Continental Telecom, Inc.  
Coopers & Lybrand  
Deloitte Haskins & Sells  
Digital Equipment Corporation  
The Dun & Bradstreet Corporation  
EG&G, Inc.  
Emerson Electric Company  
General Dynamics Corporation  
General Electric Foundation  
Graybar Electric Company, Inc.  
Halliburton Company  
Hallmark Cards, Inc.  
The Hartford Insurance Group  
The Hartford Steam Boiler Inspection and Insurance Company  
Home Life Insurance  
Honeywell Foundation

IBM Corporation  
John Deere Foundation  
John Hancock Mutual Life Insurance Company  
Johnson Controls, Inc.  
Manufacturers National Corporation  
Marathon Oil Company  
Maritz Inc.  
May Stores  
McDonnell Douglas Corporation  
Merck & Company, Inc.  
Merrill Lynch & Company, Inc.  
Monsanto Company  
Morton Thiokol, Inc.  
PET, Inc.  
Philip Morris Companies, Inc.  
The Procter & Gamble Company  
Ralston Purina Company  
R.J.R. Nabisco, Inc.  
Rohm & Haas Company  
Rockwell International Corporation  
Safeco Insurance Company  
Simpson Investment Company  
Smith-Kline Beckman Corporation  
Southwestern Bell Foundation  
Temple-Inland Foundation  
Time, Inc.  
Total Petroleum Ltd.  
The Travelers Corporation  
Union Electric Company  
Union Pacific Corporation  
UNISYS Corporation  
United Telecommunications, Inc.  
Arthur Young Foundation

\*\*These companies participate in a program in which donations to four-year colleges and universities made by employees are matched with a company gift.

### 1988-89 Tributes

Marie Damien Adams, CSJ  
Mr. and Mrs. Charles Pons

Sister John Joseph Bezdek Music Scholarship  
Loretta Anderson  
Charlotte Bishop  
Theresa Burmeister  
Lorraine Erickson  
Linda Lakebrink  
Leontone Meyer  
Jacqueline Post Miller

Linda Bock, M.D.  
Nancy Ellis Oidway  
Betty Smyly

### 1988-89 Memorials

Rosemary Cunningham  
Mr. and Mrs. August A. Baechle

Catherine E. Gaffney  
Mr. and Mrs. Ed Bielicki  
Roscoe Eatherly  
General Accounting Section, St. Louis Postal Data Center  
Kiwanis Club of Maplewood  
Mr. and Mrs. Karl Krause  
Mr. and Mrs. Ken Ohlemeyer  
Caroline Jean Schmidt  
Lawrence Taliana  
Robert Waite

Loretto Hennelly Gunn  
Mr. and Mrs. James Edmondson  
Mrs. Norma McVey  
Mr. and Mrs. Tom Noonan  
Mr. and Mrs. Robert Senkosky  
Mr. and Mrs. Vincent Shaw  
Mr. and Mrs. Donald Strathearn, III

Sally Walsh Haudrich  
Paul Haudrich

Marinda Thoma O'Beirne  
Mr. and Mrs. Donald Strathearn, III

Helen Theresa Schmelig  
Ann Boland  
Cecilia Boland  
Dorothy Schmelig  
George Schmelig Family  
Mary Ann Schmelig  
Mr. and Mrs. Donald Strathearn, III

Elizabeth Ann Roer Zehr  
Eugene J. Zehr

### Gifts In Kind

Ace Hommart Hardware  
Anheuser-Busch Company  
Avia Shoes  
The Apple Corporation  
Mr. Francis Beffa  
Marietta Binz  
Blockbuster Videos  
Boatmen's Bank  
Bob Kramer Marionettes  
The Bottom Line  
Butcher's Cupboard  
Coca Cola Bottling Company of St. Louis  
Commerce Bank of St. Louis  
Tom and Carol Croft  
Davidson Software

Terry Dougherty  
Emerson Electric  
Enterprise Leasing  
Fontbonne College Alumni Office  
Fontbonne College Bookstore  
Jane Forestell  
Frame Factory, Ltd.  
Gateway Riverboat Cruises  
Mary Gaydos, CSJ  
Mr. and Mrs. George S. Graff  
Great American Chocolate Chip Cookie Company  
Karen Griesedieck  
Lucy Griesedieck  
Kim Griffith  
Jane Hanneken  
Barbara Hollenbeck  
Huber Ring, Helm & Company  
IBM Corporation  
Jonathon's Beauty Shop  
Johnny Mac's Sporting Goods  
Kirkwood Bookstore  
Lake Forest Pastry Shop  
Margaret Lazzari  
Mary Louis Lenkman  
Jean Leonard  
Mr. and Mrs. Frances P. Licavoli  
Betty Lunt  
Brian McCue  
John McIver  
Marilyn Miller, CSJ  
Margaret Moore  
Gary Moro  
Bill Nolan  
Paul's Books  
Paragon Typographers  
Mr. Tom Price  
Natt Rabbitt  
Alberta Anne Ruys, CSJ  
Saint Louis Blues Hockey  
Saint Louis Magazine  
Saint Mary's Institute  
Sappington Garden Shop, Inc.  
Shangri-La Flower Garden  
Sisters of St. Joseph of Carondelet, St. Louis Province  
Six Flags Over Mid-America  
Stephanie Stueber, CSJ  
Sun Carpet & Floor Centers  
The Arrangement at West Port Plaza  
Rivers to the Sea  
Rudolph Torrini  
Tropicana Lanes  
Hy Waltuch  
Maggie Wester  
Janice Woehler

### Volunteers

A.J. Adewunmi  
Leonard Adewunmi  
Betty Miller Amelotti  
Paul Picco Andrew  
Ritarose Nagle Augsburger  
Dena Basler  
Rose Baumstark  
Amy Baur  
Jennifer Baxter  
Andy Beckerman  
Lisa Moritz Beckerman  
Laura Beekman  
Mark Beffa  
Maura Bernsden  
Lori Bibby  
Marietta Sanders Binz  
Sue Blevins  
Renee Denicola Boehm  
Ann Kramolosky Bolinske  
Kimberly Boyd  
Linda Brenan  
Mike Brockland  
Matt Brozovich  
Mary Alice Roche Bruntrager  
Robert Butler  
Tony Caleca  
Chris Cahill  
Jeanne Leritz Callahan  
Keith Campbell  
Mike Chlipala  
Kathy Coco  
William S. Comfort  
Jill Curtain  
Cindy Dameron  
Todd Daube  
Rosemary Denson  
Maureen McKernan Dilahey  
Melissa Doherty  
Terrance Dougherty  
Arlene Eveld, CSJ  
Mary F. Ferguson  
Margaret Shelton Flood  
Robert E. Flynn  
Dean Fournie  
Marcella Carlton Fries  
Joann Bondschuh Gallen  
Susan McGuire Geile  
Darren George  
Brad Gilmore  
George Graff  
Vernon Greer  
Matt Grellner  
Karen Tinkham Griesedieck  
Lucy Griesedieck  
Margaret Mary Gregg, CSJ  
Tim Grimes  
Jenny Gross  
Pat Gruchala  
Donna Loretto Gunn, CSJ  
Jane Mitchelllette Hannekan  
Lori Hannekan  
Mitch Hannekan  
Mary Lee Rodegast Harmon  
Darrell Haynes  
Mark Henningfeld  
Katherine Hernan  
Margaret Hesse  
Angeline Marino Heumann  
David Hoffman  
Mary Ann Vatterott Holden  
Barbara Gutting Hollenbeck  
Mr. Dan Human  
Kristine Hurtado  
Jessica Johnson

Patricia Cobb Jones  
Rosalyn Kessler  
Laurie King  
Kathy Kutis  
Kim Kutis  
Thomas Kutis  
Nick Larosa  
Carole K. Lasky  
Virginia Lawton  
Mary Lou Meyer Lenkman  
Frank Licavoli  
Shelby Liggett  
Nancy Linhoff  
Joanne Poelker Loftus  
Betty Sturrock Lunt  
Marie Jostes McBride  
Marsha McCleod  
Laurie Bremmer McGrath  
Kathy McTigue  
Ann McDermott  
Kathleen McKernan  
Dean McKinney  
Lee McKinney  
Mary Ann Mallon  
Kay Gunn Martin  
Bernice Marquart  
Mary Veidt Masterson  
Ann C. Meyer  
Leontone Meyer  
Jacqueline Post Miller  
Judy Cyran Mold  
Jeanne Dulle Moore  
Margaret M. Moore  
Gary Moro  
Jeff Morrow  
Terry Mulligan  
Peggy Musen  
Julianne Iwerson-Niemann  
Deidre Noonan  
Thomas Noonan  
Colette Crowley O'Brien  
Nora O'Donnell  
Mary Catherine O'Gorman, CSJ  
Henrietta Binder Osterholt  
Carol Pelusi  
Jane O'Connell Pennell  
Bonny Brimmer Perry  
Sean Peters CSJ  
Noreen Lynch Peterson  
Katie Powers  
Rosemary Mantia Quigley  
Natt Rabbitt  
Janet Rabushka  
Ruth Margaret Raupp, CSJ  
Aaron Reed  
Lori Reed  
Beth Ringo  
Mike Roberts  
Dora Robinson  
Penny Holecek Rocco  
Marianne Russell  
Maria Santos  
Amy Sargent  
Renee Sargent  
Rob Schnettler  
Mary Schoendienst  
Vince Shaw  
Tammy Sherrill  
Greta Short  
Allan Silverberg  
Nancy Gund Simon  
Maureen Slattery  
Corey Smith  
Carol Conway Spehr  
M. Eileen Stanley  
Joanne Arnold Strathearn  
Most Reverend Steib  
Ray Steiger  
Tim Steinhoff  
Ruth O'Neill Stroble  
Stephanie Stueber, CSJ  
Joyce Sudhoff  
Penny Thomas  
Carla Tinoco  
John T. Tucker  
Randy Ussery  
Carmeline Utz  
Rex Van Almsick  
Joan Vatterott  
Pat Voss  
Tom Walsh  
Jeanette Altepeter Wamser  
Melody Pearce Watts  
Jerry West  
Chris Westbrook  
Rich & Irene Westbrook  
Scott Westbrook  
Margaret Roth Wester  
Wendy Wiese  
Judith Willard  
Ann Sullivan Williams  
Vicki Williams  
Peggy Winkelman  
Pete Wiss  
Kristin Wuenschner  
Daniel H. Wolf  
Mary Joan Woods  
Ruth Ann Yates, CSJ  
Gary Zack  
Carolyn Zwart

### Booster Club

Bob Butler  
Tony Caleca  
Joe Doyle  
Meneve Dunham  
Walter Dunham  
Joyce Hipp  
Ginny Lawton  
Peggy Musen  
Carla Tinoco  
Adolf Wuenschner  
Tom Yahraes



# alumni update



Susan King

Mary Lou Meyer Lenkman

## Affordable Auction Set For November 9

On Thursday, November 9, from 7 to 9:30 p.m., the Alumni Association will hold its seventh Affordable Holiday Auction. Continuing the tradition begun in 1963, the auction will emphasize "affordable" holiday shopping in a "relaxed, social setting"—specifically in Arnold Memorial Center, Medialle Hall.

Throughout the summer, alumni met to make holiday auction items. Those who attend the event are asked to bring a holiday gift to be auctioned. Donations are encouraged.

Proceeds go to the Annual Fund division of The Campaign For Fontbonne.

Jeanne Dulle Moore '81 is auction chair, assisted by Sue McGuire Geile '70, Joyce Sudhoff '79, Joanne Poelker Loftus '72 and Judith Willard '81.

## Founders' Day Awards

The 1989 Founders' Day Awards for distinguished service will be given at the Founders' Day Dinner, October 19, 1989, at the University Club, St. Louis, Mo. Recipients are:

**Roseanne Cook, CSJ '73**—health care to the poor;  
**Margaret Alice Daues, CSJ '61**—church leadership;  
**Rosemary Denson '69**—law;  
**Catherine A. Dulle '73**—administration and business;  
**Donald Gunn, Jr.**—community service;  
**Mary Jane Helm King '39**—family.

Persons who wish invitations to the Founders' Day Dinner may request them by contacting the Alumni Office, Fontbonne College, 6800 Wydown Blvd., St. Louis, MO 63105, (314) 889-1403.

## Alumni Officers and Executive Board Members Begin New Year

Mary Elizabeth Kaslick '80 will serve as president of the Fontbonne College Alumni Association for the 1989-90 academic year. Colette Crowley O'Brien '65 will be vice president; Mary Lou Meyer Lenkman '64, secretary.



Susan King

Colette Crowley O'Brien

Executive Board members serving a two-year term 1988-90 are **Betty Miller Amelotti '77**, **Marietta Saunders Binz '53**, **Mary Alice Roche Bruntrager '43**, **Jeanne Leritz Callahan '51**, **Norman Corley '85**, **Maureen McKernan Dilthey '74**, **Lucy Griesedieck '80**, **Karen Tinkham Griesedieck '77**, **Jane Mitchellette Hanneken '52**, **Barbara Gutting Hollenbeck '61**, **Julie Iwersen-Niemann '68**, **Rosalynn W. Kesler '69**, **Joanne Poelker Loftus '72**, **Judy Cyran Mold '70**, **Margaret Moore '78**, **Deirdre Noonan '83**, **Penny Holocek Rocco '66**, **Carol Conway Spehr '63**, **Jeff Sztukowski '82**, **Margaret Roth Wester '80**, **Judith Willard '81**, **Mary Joan Woods '68** and **Ruth Ann Yates, CSJ '78**.

The following alumni will begin a 1989-91 two-year term: **Andy Beckerman '89**, **Susan McGuire Geile '70**, **John Hunn '86**, **Carole Kaufmann Lasky '85**, **Nancy Linhoff '89**, **Anita Bruegge Martinez '84**, **Jeanne Dulle Moore '81**, **Lisa Moritz Beckermann '89**, **Sean Peters, CSJ** (vice president for academic affairs and dean), **Margaret Schaumburg '86**, **Therese Schuchard '88**, **Joanne Arnold Strathearn '71**, **Joyce Sudhoff '78** and **Jeanette Altepeter Wamser '70**. **Stephanie Stueber, CSJ**, is director of alumni relations.

## Call For Nominations

Nominations of Fontbonne College graduates and of St. Louis community leaders are being solicited for the 1990 Founders' Day Awards. Deadline: February 15, 1990. Included a brief statement to support the nomination and the names and addresses of at least two references. Send to the Alumni Office, Fontbonne College, 6800 Wydown Blvd., St. Louis, MO 63105.



Susan King

Mary Elizabeth Kaslick

It's a winner!  
**RHINESTONES AND ROULETTE II**  
Saturday evening, March 31, 1990  
Medaille Hall, Fontbonne College  
Volunteer for a Rhinestones and Roulette committee and solicit auction gifts, help setup, work at a game table, decorate, get involved in the Fontbonne College Alumni Association's second big casino night and **BE A WINNER!**

Call Jeanne Dulle Moore, chair, at 968-9240 or the Alumni Office 889-1403 for details.

## Deaths

The Fontbonne College Alumni Association expresses sympathy to the families of the following alumni who died: **Loretto Hennelly Gunn '29**, **Rose Marie Hardy '59**, **Norma Doyle Maney '39**, **Florence Geist Rau '42**, **Maureen P. Slattery '83**, **Ruth Mosberger Townsend '37** and **Elizabeth Roer Zehr '50**.

The Alumni Association also expresses sympathy to the following alumni on the death of an immediate relative: **Joy Lock Bauers '39** and **Wendy Bauers Northrup '63** (husband and father, respectively); **Jana Wallis-Brown '84** (father); **Nina Kassing Bryans '57** (father); **Mary McKee Colbert '57** (son, Christopher); **Susan Klevern Green '67** (mother); **Patricia Carter Haneklau '55** (husband); **Sally Harper, CSJ '69** (mother); **Marion Mosberger Hummel '42** (sister Ruth); **Carlotta Smith Hyams '65** (son Patrick); **Karen Langhi, CSJ '62** and **Lynda Langhi Wright '62** (mother); **Theresa Martin, CSJ '75** (mother); **Kay Gunn Martin '55**, **Donna Loretto Gunn, CSJ '61**, **Maggie Gunn Fowler '64**, and **Bridget Gunn Calcaterra '72** (mother); **Marie Sansone Zuccherro '42** (husband).



## Loretto Hennelly Gunn '29

By Jessica Johnson

Loretto Hennelly Gunn, a 1929 graduate of Fontbonne College passed away June 26, 1989 after a short illness. Mrs. Gunn was 81.

A longtime volunteer in civic and charitable organizations, Mrs. Gunn was the widow of Donald Gunn Sr., who was a St. Louis probate judge and president of the Board of Aldermen.

Kay Gunn Martin '55, the eldest of the Gunn children and the first daughter of an alumna to attend Fontbonne, shared some thoughts of her mother. "There were three things that were important to Mom. First, it was her faith. The Catholic Church and her faith meant very much to her. To have the close family we have was second. We have nine family holidays that we share and everyone looks forward to spending the time together. The third thing was her responsibility to the community. She had a deep commitment to serve her community and felt what she did, needed to be done to the best of her ability."

Serving her community as well as her family, was a tremendous part of Mrs. Gunn's life. She was the president of the Archdiocesan Council of Catholic Women and served in various capacities in both community and religious activities. From 1950 to 1952, Mrs. Gunn was co-chairman of the St. Louis-St. Louis County March of Dimes campaign. For ten years, she was a member of the board of directors of the American Lung Association of Eastern Missouri. Mrs. Gunn was also an officer of the auxiliary at the old St. Louis City Hospital and a member of the executive board of the Alverne Guild.

Mrs. Gunn served as a member of the St. Louis Archdiocesan School Board for ten years. In 1949, she was elected to membership in Delta Epsilon Sigma, Honorary Fraternity. In 1957, she was awarded the Magnificent Medal of Mundelein College, Chicago, Ill. This annual award, given to but one recipient on a national basis, is for women who have made the best use of their college educations in community service.

In 1957, she was named a Woman of Achievement by the old St. Louis Globe-Democrat. In 1968, Pope Paul VI gave her the Pro Ecclesia Pontificae Medal for her contributions to the church.

Since her graduation, she was very active in the Fontbonne College Alumnae and was the first chairperson of the Friends of Fontbonne Library. Mrs. Gunn received the Fontbonne College Alumnae Award in 1975, and she was one of the first five recipients to receive the Fontbonne College Distinguished Service Award in 1986.

Mrs. Gunn was the mother of nine children; Kay Gunn Martin, Donald Gunn Jr., Donna Loretta Gunn, CSJ, James F. Gunn, Maggie Gunn Fowler, Thomas M. Gunn, Michael P. Gunn, Patrick R. Gunn and Bridget Gunn Calcaterra; and the grandmother of 26. Her five sons are lawyers and her four daughters are graduates of Fontbonne College.



Mr. and Mrs. Donald Gunn, Sr.

"She was a wonderful mother and a good friend. Mom loved Fontbonne and she was very pleased and proud that all of her daughters and two daughters-in-law graduated from Fontbonne," says Kay. "My father was always the worrier and Mom was very patient and gracious. One story I'll never forget is when

the furnace backed up and smoke filled the house. My parents weren't sure if the house was on fire or not, so Daddy called the fire department. When the firemen arrived my mother opened the door and said 'Good afternoon. How nice of you to come. The Judge is in the basement.'

### We'll publish your news!

#### DEAR ALUMNI AND PARENTS:

If the address shown on the Fontbonne College Magazine label has changed or will change, please send us the label along with the new information below.

We want to hear your news. All submissions to Alumni Notes are edited for style and brevity.

**SEND YOUR NEWS UPDATE OR LABEL CORRECTION TO:** Office of Alumni Relations, Fontbonne College, 6800 Wydown Blvd., St. Louis, MO, 63105

Name \_\_\_\_\_ Class Years \_\_\_\_\_

Title  Dr.  Mr.  Ms.  Miss  Mrs.  Rev.

Status  Single  Married  Divorced  Widowed

Spouse \_\_\_\_\_ Class Years \_\_\_\_\_

New Address \_\_\_\_\_

City \_\_\_\_\_ State \_\_\_\_\_ Zip \_\_\_\_\_

Home Phone \_\_\_\_\_ Business Phone \_\_\_\_\_

My firm, employer, or professional specialty \_\_\_\_\_

Please include this news item \_\_\_\_\_

Today's date \_\_\_\_\_

I have continued on a separate sheet.

Because of space and deadline constraints, some alumni notes already submitted will appear in the next issue. Thank you for your news. We love to hear from you.



# Alumni Notes

## 1930s

**Marcella Marie Holloway, CSJ '38**, professor emerita of English at Fontbonne College, won second place in both the poetry and the magazine article categories in the annual writing contest sponsored by the Missouri Writers' Guild.

The class of 1939 celebrated their 50-years anniversary with a luncheon at Westborough Country Club, Glendale, Mo., on September 22. The planning committee was **Mary Jane Helm King, Hope Davis Henry, Betty Sturrock Lunt** and **Mary M. Shackelford Rodgers**.

## 1940s

One of the headlines in the sports section of the July 23, 1989, *St. Louis Post-Dispatch*, highlighting baseball Cardinal Albert (Red) Schoendienst's induction into the Hall of Fame, read: "Mary Schoendienst Big Backer of Her Hall of Famer Husband." **Mary O'Reilly Schoendienst** is a 1945 Fontbonne alumna; daughter **Colleen Schoendienst Schwetzy** graduated from Fontbonne in 1973.

## 1950s

**Loretto Kohler Hein '57** was chosen "Mother of the Year" at Visitation Academy, St. Louis, during honors ceremonies in spring 1989.

Ten members of the 1958 class met for a reunion at **Angie Marino Heumann's** home, St. Louis, on July 2, 1989. They were **Angie Marino Heumann, Jo Ann Gross Petty, Noreen Lynch Petersen, Merlyn Price Schack, Peggy Whittmann Boll, Joan McKenna Dolan, Martha Re, Sheila Nellis McDonald, Joan Ruthmann Bazzetta** and **Jackie Post Miller**. Other guests were the following Sisters of St. Joseph from Fontbonne: **Sisters Margaret John Purcell, Dolorita Marie Dougherty, Teresine Lewis, Anges Cecile Hickox, Rose Genevieve Downs, Mary Gaydos** and **Stephanie Stueber**.

**Gina Borelli Ernst '59** made the arrangements for a reunion of her class to celebrate their 30th-year reunion on September 24, with dinner at Yacovelli's Restaurant, Florissant, Mo.

## 1960s

**Mary Jeanne Gertken Brady '65** has been appointed diocesan liaison for the Loyola (New Orleans) Institute for Ministry program. For ten years Brady, who has her master of arts degree in ministry from the Loyola Institute, has been director of religious education at St. Paul's Parish, Olathe, Kan.

**Mary Katherine Sheehan Eckstein '67** has been named director of the Respect Life Office and coordinator of the Respect Life Commission, Denver, Co. Archbishop J. Francis Stafford announced the appointment in June 1989. Eckstein is the daughter of **Mary Belle McColle Sheehan '30**, deceased.

**Mary Lee Walther '68**, a faculty member at St. Joseph Institute for the Deaf, St. Louis, has been chosen "Professional of the Year" for 1989 by the International Organization for the Education of the Hearing Impaired. The award, a national honor given only every two years, will be presented at the July 1990 Alexander Graham Bell Convention, Washington, D.C.

Forty-two members of the 1964 class met on July 29, 1989, to celebrate their 25th anniversary. **Mary Rose Enderlin La Mear** hosted a pool party at her home in South St. Louis county. Fontbonners and their spouses had dinner together that evening at Sunset 44.

Out-of-towners who came for the reunion were **Joanne McGinn Brady** (Palatine, Ill.), **Barb Farrell Contat** (Ida, Minn.), **Mary Ann Hostler Ericson** (Springfield, Va.), **Georgian Taucher Harris** (St. Joseph, Mo.), **Peggy Scally Johnsen** (Marshall, Mo.), **Ruth Ann Hostler Kerr** (Bridgewater, N.J.), **Carole Vogel Leslie** (Thibodaux, La.), **Mary Dee Montie Reitz** (Chicago, Ill.), **Adolphine Brungardt Shaw** (Kansas City, Mo.), **Donna Murnighan Staab** (Chicago, Ill.), **Pat Watters Walche** (Jacksonville Beach, Fla.), **Charlotte Rice Weidel** (El Paso, Texas), **Jan Schroeder Paul** (Springfield, Ill.) and **Sue Hirner Dolan** (Oklahoma City, Okla.).

**Anne Ewers '74**, free-lance opera stage director, will direct the following operas during the 1989/90 season: "Madame Butterfly," Lake George; "The Merry Widow," Dallas Opera; "Dialogues des Carmelites," Edmonton Opera; "Rigoletto," Opera Carolina; "La Roudine," Canadian Opera Company; "Ballo in Maschera," San Francisco Opera.

**Joan Shriner Hartvigsen '75** is associate veterinarian at Franklin County Animal Clinic, Winchester, Tenn. She received her DVM degree from the University of Tennessee College of Veterinary Medicine, May 1989.

**Theresa Rheinecker Prosser '73** is assistant professor of education at Webster University, St. Louis.

**Mary Catherine Bellino Van Deven '73** received her graduate degree in special education from Northern Illinois University, DeKalb, and is teaching an intermediate special education class in DeKalb.

## 1980s

**Michele Driska '89** is co-owner of Icing, a women's accessory specialty shop in Union Station, St. Louis.

**Kay Garrison Erwin '82** has joined Mercantile Marketing Trust Services, located in downtown St. Louis.



The planning committee was (left to right) **Stephanie Stueber, CSJ, Mary Beth Olyniec Westhoff, Julie Lamm Blow, Mary Rose Enderlin LaMear, Mary Lou Meyer Lenkman, Betsey Vernile Scherz** and **Karen Jungewaelter Thaman**.

## 1970s

**Susan Rothery Allen, MS '76**, senior programmer/analyst, Metropolitan Health Care Management Company, Chesterfield, Mo., has been selected as an Outstanding Young Woman of America for 1988.

**Connie Boschert Diekman '72** was elected to a two-year term as board chair of the American Heart Association's St. Louis Chapter.

**Kathie Geppert, MBA '89**, is executive director of West County Surgery Center, St. Louis.

**Alan Chung Yin Ho '81** received his MBA from Duke University in May 1989.

**Sharon Lyons '81** is unit manager in the collection division's automatic collection branch, Internal Revenue Service, St. Louis.

**Anita Bruegge Martinez '84** is administrator of Americana Healthcare Center, Florissant, Mo.

**Sherilyn Spiller '89** is system engineer for IBM in Chicago.



# 1989-90 Fontbonne Calendar of Events

## Sports

### Men's and Women's Cross Country Team

October  
 14 Washington University . . . . . 11 a.m.  
 ROTC Invitational at Forest Park  
 21 SIU-Edwardsville/Cougar . . . . . TBA  
 Sprint  
 28 Show Me . . . . . TBA

November  
 4 Conference Meet or NAIA . . . . . TBA  
 11 Regional Qualifier . . . . . TBA  
 18 NAIA National Championships TBA

### Women's Volleyball

October  
 3 William Woods . . . . . 7 p.m.  
 Webster . . . . . 8 p.m.  
 4 Culver Stockton . . . . . 6 p.m.  
 5 SIU-Edwardsville . . . . . 7 p.m.  
 7 Principia . . . . . noon  
 9 Illinois College . . . . . 7 p.m.  
 Hannibal . . . . . 8 p.m.  
 11 McKendree . . . . . 7 p.m.  
 13-14 Columbia-Westminster  
 Tournament . . . . . TBA  
 16 Webster . . . . . 7 p.m.  
 18 McKendree . . . . . 7 p.m.  
 20-21 Conference Tournament . . . . . TBA  
 23 Florissant Valley . . . . . 6:30 p.m.  
 25 Blackburn . . . . . 7 p.m.  
 27 District Tournament . . . . . TBA

Home Games — Bold

### Men's Soccer

October  
 2 Missouri Valley . . . . . 4 p.m.  
 4 Missouri Baptist . . . . . 4 p.m.  
 6 Southern Nazarene . . . . . 2 p.m.  
 7 Oklahoma City . . . . . 2 p.m.  
 11 Columbia . . . . . 3:30 p.m.  
 13 Rockhurst . . . . . 3:30 p.m.  
 14 Lindenwood . . . . . 3:30 p.m.  
 19 Harris-Stowe . . . . . 3:30 p.m.  
 21 Central Methodist . . . . . 11 a.m.  
 22 Westminster . . . . . 1:30 p.m.  
 24 McKendree . . . . . 3 p.m.  
 27 Park College . . . . . 3 p.m.

### Women's Basketball

November  
 9 William Woods . . . . . 7 p.m.  
 11 Central Methodist . . . . . 5:30 p.m.  
 21 Missouri Valley . . . . . 6:30 p.m.  
 25 Maryville . . . . . 5:30 p.m.  
 28 Central Methodist . . . . . 6 p.m.

December  
 1 Evangel . . . . . 6 p.m.  
 2 Avila . . . . . 6 p.m.  
 3 Rhodes (at Maryville) . . . . . 1 p.m.  
 7 McKendree . . . . . 5:30 p.m.

January  
 5-6 Oakland City Tournament . . . . . TBA  
 8 Missouri Valley . . . . . 5:30 p.m.  
 9 Greenville . . . . . 7 p.m.  
 11 Principia . . . . . 5:30 p.m.  
 13 Webster . . . . . 6 p.m.  
 17 SIU-Edwardsville . . . . . 7:30 p.m.  
 19 Oakland City . . . . . 6 p.m.  
 22 Maryville . . . . . 7 p.m.  
 27 Lindenwood . . . . . 6 p.m.  
 30 William Woods . . . . . 6 p.m.

February  
 3 Missouri Baptist . . . . . 6 p.m.  
 6 Webster . . . . . 5:30 p.m.  
 8 Harris-Stowe . . . . . 6 p.m.  
 12 McKendree . . . . . 7 p.m.  
 13 Harris-Stowe . . . . . 6 p.m.  
 16 Lindenwood . . . . . 6 p.m.  
 17 Park College . . . . . 5:30 p.m.  
 18 Avila . . . . . 2 p.m.  
 22 Missouri Baptist . . . . . 5:30 p.m.  
 24 Post Season Tournament . . . . . TBA

### Men's Basketball

November  
 11 Concordia Seminary . . . . . 7:30 p.m.  
 17-18 McKendree Tournament . . . . . TBA  
 21 MacMurray College . . . . . 8 p.m.  
 25 Principia . . . . . 7:30 p.m.

December  
 1 Westminster . . . . . 8 p.m.  
 2 Avila . . . . . 8 p.m.  
 6 Park (Cahokia) . . . . . 7:30 p.m.  
 7 McKendree . . . . . 7:30 p.m.  
 9 UMSL . . . . . 7:30 p.m.  
 18 Sanford Brown . . . . . 8 p.m.

January  
 2 Occidental College, CA . . . . . 7:30 p.m.  
 3 University of Laverne, CA . . . . . TBA  
 4 Azusa Pacific  
 College, CA . . . . . 7:30 p.m.  
 5 Christ College, L.A., CA . . . . . 7:30 p.m.  
 11 Principia . . . . . 7:30 p.m.  
 13 Webster . . . . . 8 p.m.  
 19 Park (Kansas City) . . . . . 8 p.m.  
 20 Brescia, KY . . . . . 8 p.m.  
 22 Sanford Brown . . . . . 7:30 p.m.  
 24 Columbia . . . . . 8 p.m.  
 27 Lindenwood . . . . . 8 p.m.  
 29 Park (Cahokia) . . . . . 7:30 p.m.  
 30 Hannibal . . . . . 8 p.m.

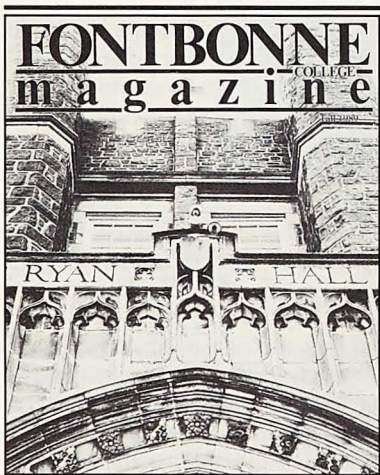
February  
 1 McKendree . . . . . 7:30 p.m.  
 3 Missouri Baptist . . . . . 8 p.m.  
 6 Webster . . . . . 7:30 p.m.  
 8 Harris-Stowe . . . . . 8 p.m.  
 10 Columbia . . . . . 7:30 p.m.  
 13 Harris-Stowe . . . . . 8 p.m.  
 16 Lindenwood . . . . . 8 p.m.  
 17 Hannibal . . . . . 7:30 p.m.  
 21 Westminster . . . . . 7:30 p.m.  
 22 Missouri Baptist . . . . . 7:30 p.m.  
 24-26 Post Season Tournament . . . . . TBA

## Fontbonne

Fontbonne College  
 6800 Wydown Boulevard  
 St. Louis, Missouri 63105-3098

Non-Profit Organization  
 U.S. Postage  
 PAID  
 St. Louis, Missouri  
 Permit No. 1768

Address Correction Requested



Fall 1989