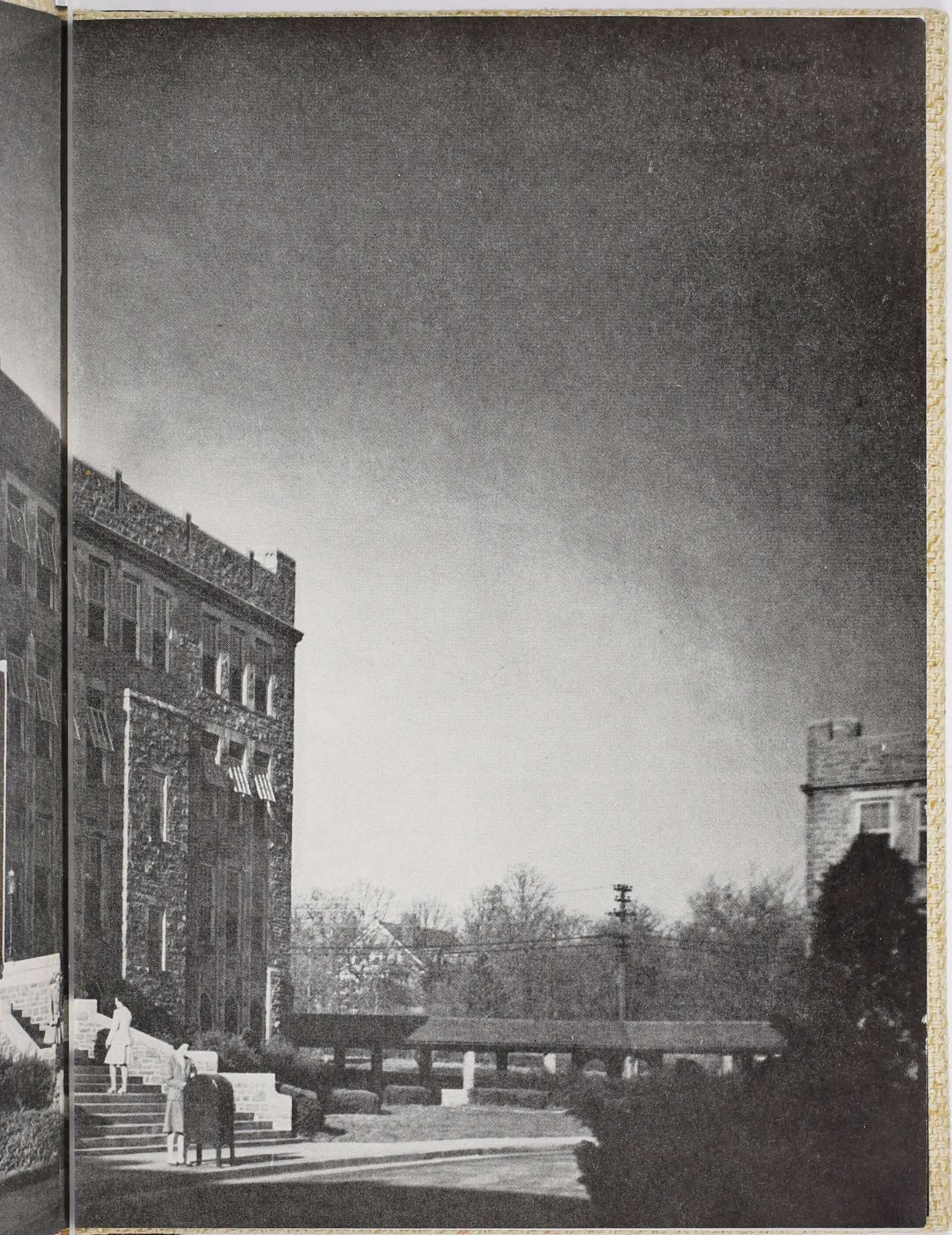


The Fontbonne
1942







BENEATH THESE BANNERS UNFOLDS

The College Year OF 1941 - '42

The



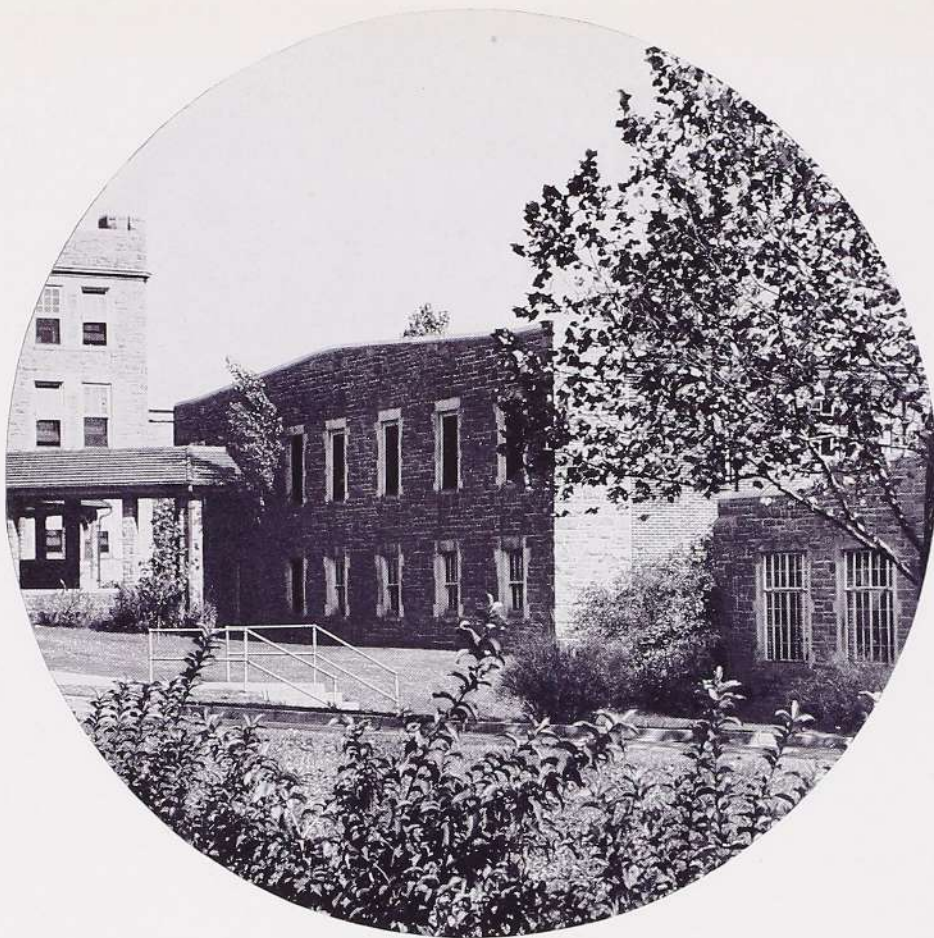
*Glimpse of the Library
through the Hall Door*

The Fontbonne FOR Nineteen Forty-Two

*Junior Class Officers
Arriving for Formal Dinner*

THE Annual Publication
of the Students of
FONTBONNE
COLLEGE
St. Louis, Missouri





*Gymnasium and Cafeteria Buildings
as Seen from the South Campus*

We Dedicate

The peace that will come in the wake of victory. A world, a nation, a soul at peace cannot be too much to ask. Everywhere there is destruction. Yet that Power greater than any warlike weapon will prove a guiding force to the peace that is ahead. All our faith, our life, our hope, we place in Him.

HE IS our structure of spiritual defense that cannot fail to bring inevitable peace. The college students of today will determine the fate of that peace. Whether it will be a lasting peace rests only with us, for in accordance with our faith the future will be decided. Let us never forget the horrors of war. Let us never forget the importance of the true ideal of peace, the spreading of the Mystical Body of Christ in the world. May this dedication serve as a reminder.

ate THIS *Volume* TO



Baccalaureate Services in the Chapel

That We

The Preamble to the Constitution of the United States postulates a mode of living which has guided Americans for almost two centuries. It embodies a way of life that American men and women consider worth fighting for today. In the Preamble we find the theme that typifies democracy in action in our country, in education, and more specifically, in our college! In this year of 1942 we are striving to form a more perfect union in this world of disunion,

Freshmen on Parade

Page 6



We MAY Defend

to establish justice in this world of injustice, to insure domestic tranquillity in this world of war, to provide for the common defense in this world of hostile aggression, to insure the blessings of liberty in this world deprived of freedom. With true democracy as the foundation of our academic and social activities, we cannot fail to accomplish our goal. To bring about a realization of the part democracy plays in education is the purpose of *The Fontbonne* of 1942.

Seniors File Across the Campus

Page 7



Presented by

ALEEN BLOCK
Editor

ROSEMARY WARD
Business Manager

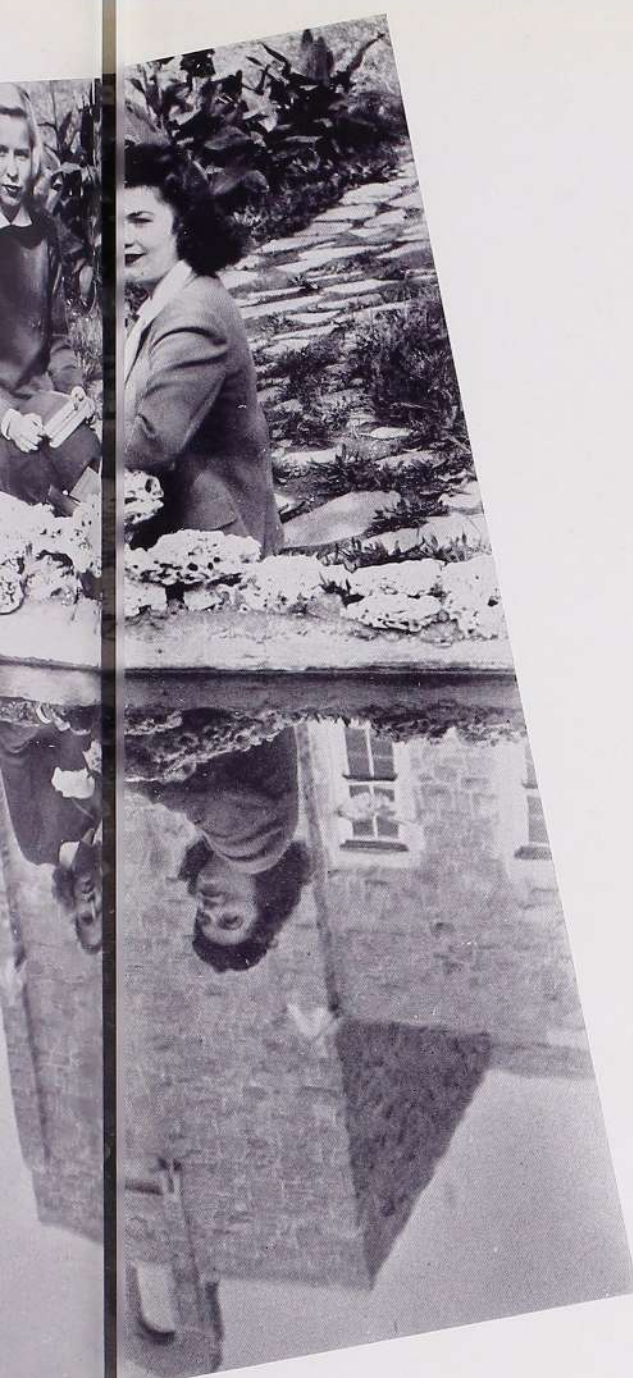
EVELYN HURLEY
Feature Editor

BETTY HIGGINS

MARY V. RICHARD
Photo Editors



This Is OUR In en



TO ESTABLISH JUSTICE

In the faculty shall be vested all legislative, executive, and judicial powers under which we work and play. Student government shall progress under their direction.

TO PROVIDE FOR THE COMMON DEFENSE

We, the students, shall faithfully execute our duties within the college to the best of our ability, preserving, protecting, and defending its ideals.

TO FORM A MORE PERFECT UNION

Through the functions of the various organizations the students shall attain habits of dependability, self-reliance, and the gracious manners of cultured young women.

TO PROMOTE THE GENERAL WELFARE

All students shall be granted the right to participate in extracurricular activities with the aim of achieving social competence in order to prepare them for service to society.

The Lily Pond Reflects Mary McKeon and Bellie Knetzger Against the Background of the Chapel Walls

Inventory OF Freedom



REV. BENJAMIN J.
FULKERSON



REV. J. E. CANT-
WELL



REV. JAMES S.
KELLY



GERTRUDE
TROEMEL



ELEANORA BAER



REV. JAMES J.
HIGGINS

ADMINISTRATION

MOTHER MARY PIUS NEENAN
C.S.J., Ph.D.
President

SISTER SUSANNE MARIE VACHON
C.S.J., A.M.
Registrar

SISTER JOSEPH ALOYSIUS GEISSERT
C.S.J., A.M.
Dean

SISTER MARY HILDA LORSBACH
C.S.J., A.B.
Treasurer

To Establish Justice

MOTHER MARY PIUS fully symbolizes her office as President of the college by being both understanding and sympathetic. As for philosophy, ask her about anything from Aristotle to that book published yesterday and you'll get an answer that will set you thinking.

Her winsome smile and her unlimited kindness and charity make the dean of Fontbonne, SISTER JOSEPH ALOYSIUS, a competent counsellor, respected by both students and faculty.

For years, students have been wondering how SISTER SUSANNE MARIE retains her patience, even through scowl-producing registration days.

With SISTER HILDA backing it, success is inevitable, whether it be a Fontbonne horse show or a homecoming. Her secret: She'll get *you and you and you!*

MISS BAER successfully combines a good disposition with knowledge, and the result is a smooth running library.

In SISTER JOHN JOSEPH one finds all the qualities of a superb teacher and artist. Those of us outside the music department know her as a truly remarkable "organ-fund raiser."

Dividing her time among various activities is SISTER SYLVIA MARIE's specialty. The boys in camp must be tossing bouquets her way for the stacks of literature and rosaries she's sent them.

To quote SISTER PATRICIA, Fontbonne's mathematical genius, "Math problems are a happy pastime," and her majors are convinced of the fact.

When the sophomores complete FATHER CANTWELL's Apologetics course, they'll have their opponents apologizing for their lack of knowledge.

MR. CANTWELL is usually seen at all college social functions. Could it be because of his sly humor and general liking for monetary problems?

"A perfect lady" may be a trite expression, but it is the only adequate way of describing MISS CARMODY. Dignified and charming, she has always symbolized to our minds the ideal hostess.

Being skilled in both Spanish and German, SISTER ST. PAUL is a valuable war asset to our



BELLE M. MULLINS



GERTRUDE M. HORGAN



DR. ALPHONSE H. CLEMENS



MURRY
CANTWELL

THERESA M.
CARMODY

VIRGINIA L.
FUEHLEN

EUGENE P.
MONAGHAN

government. She could both decode enemy messages and further South American relations.

DR. CLEMENS is a firm defender of his courses. He strongly advocates the Family Major as the ideal post-war cure.

Like a walking oracle, SISTER ANNA MECHTILDA, our authority on Horace, renders Biblical and Latin quotations with the greatest of ease.

SISTER ATHANASIA has the patience of an earthly angel when those "oh, so earnest" freshmen accidentally hold nitroglycerine over the bunsen burner.

SISTER BERCHMANS, Canada's special goodwill emissary to Fontbonne, is an interesting linguist, and can converse at will in three languages: French, Free French, and English.

Our vitamin instructor, generally referred to by the public as MRS. FRIES, is responsible

for the excellent dietitians we're turning out this year.

If the seniors heed FATHER FULKERSON's advice, they can't possibly shipwreck on the shoals of matrimony. Father personally wishes each "Joe" and "Josephine" the happiest of marriages.

SISTER FREDERIC covers more ground in less time than a German blitzkrieg. Tell her the Rhine flows through France, and you're on her blacklist forever.

If you want to learn to tra-la-la a la Lily Pons, look up SISTER MADELEINE SOPHIE. You'll probably become a Glee Club member and start on the road to fame.

Are you in a quandary as to how and why Washington crossed the Delaware? SISTER FELICITE will be delighted to let you in on the inside story.

FATHER HIGGINS is one of the nicest persons we know. He has the patience of a saint, and a dry sense of wit lurks slyly behind his genial smile.

MISS HORGAN has been calm and composed with publication staff members for three years now. With such excellent practice she'd be proficient in anybody's air raid.

FATHER KELLY keeps the interest of his freshman religion class by discussing and solving the long drawn-out problems that confront them.

"Toe the mark" for SISTER ROSE AGNES, and she will give you more than fair treatment. One of her ambitions is a sodality of 201 out of an enrollment of 200.

Ask SISTER ALBERTA about that Fontbonne Symphony Orchestra which she so confidently dreams of. When she tells you of the talent she has lined up, you'll be convinced she isn't indulging in wishful thinking.

MR. MONAGHAN's good nature is incredible. He smiles at his students' mistakes, gently corrects them, and adds "Fine," in Spanish of course.

According to recent Science Building rumors, MR. MULLIN, our physics instructor, has overcome the barrier of teaching a difficult subject and is well-liked by all.

A shining example of perfection in the art of theatrical production is MISS MULLINS, who always can tell you just what to say and how to say it.

After eighty years of married life we'll probably be coming back to SISTER ALFRED for advice on child care. Sister favors the old-fashioned "spanking" as an excellent psychological approach.

Don't cross your knees, please, in SISTER BERENICE's class, but if you want to be as good a teacher as she is, just listen, and you'll learn.

Life must be just one big catalogue to SISTER ST. LUKE after the many hours she spends surrounded by book shelves, over-due items, and perplexed students.

Perhaps you'll find SISTER CATHERINE DE RICCI in the darkroom but not in the dark when it comes to chemistry and photography.

SISTER MARGARET JOHN is delving into English tomes right now, but we're hoping that her dynamic personality will soon be back with us.

SISTER LUCIDA never misses the mark in making her history classes fascinating. She's writing a book now, and we want priority on the first edition!

SISTER MARGUERITE has not only shown her capability in dealing with biological specimens, but with human nature. Year after year, she copes with the freshmen's gigantic difficulties.

SISTER MARTHA is the guiding light behind those tempting meals the girls in white serve in the cafeteria.

Besides teaching Greek and Bible, SISTER EDWINA finds time to guide the resident students and see that they are plentifully supplied with St. Louis U. men.

MISS TROEMEL is at the controls in the art room, operating them with the utmost efficiency. Incidentally, we're convinced there's a keen sense of humor lurking beneath her ability.

SISTER ROSE MARGARET does more traveling than Gulliver in his prime. As supervisor of music she spends most of her time flitting about our fair city.

If you sprain a finger or pick up a bomb, have no fears. There's always MRS. WALSH, our competent "First Aider," to reconstruct you in ten seconds flat.

MISS WILLIS's hands lead a busy life. They're equally capable whether they're knocking down pins at a bowling alley or doing a simple knit two purl two.

A late news flash in the yearbook schedule was the resignation of MISS VIRGINIA FUEHLEN as Social Representative. Her successor, MRS. EDWARD HARRINGTON, has won a place in our hearts through her unfailing interest in all our problems.

GWYNETTE C. WILLIS

C. J. MULLIN



THE FACULTY

MOTHER MARY PIUS NEENAN, C.S.J., Ph.D.	
	<i>President of the College and Director of the Department of Philosophy</i>
MARGARET AIRD, B.S. in Nursing	<i>Lecturer in Home Nursing</i>
ELEANORA BAER, A.B.	<i>Librarian</i>
SISTER LOUIS JOSEPH BAUER, C.S.J., Mus.B.	<i>Assistant Professor of Music</i>
SISTER JOHN JOSEPH BEZDEK, C.S.J., A.B., Mus.M.	
	<i>Professor of Music and Director of the Department</i>
SISTER SYLVIA MARIE BOOTHBY, C.S.J., A.M.	<i>Professor of English and Director of the Department</i>
SISTER MARY PATRICIA CALLAGHAN, C.S.J., A.M., Cand. Ph.D.	<i>Professor of Mathematics</i>
REVEREND JOHN ENGLAND CANTWELL, S.J., A.M., S.T.L.	<i>Instructor in Religion</i>
MURRY CANTWELL, A.M., C.P.A.	<i>Assistant Professor of Accounting</i>
THERESA M. CARMODY, B.S., M.S. in Home Economics	<i>Associate Professor of Home Economics</i>
SISTER ST. PAUL CHRISTMAN, C.S.J., A.M.	<i>Associate Professor of Modern Languages</i>
ALPHONSE H. CLEMENS, Ph.D.	<i>Professor of Economics and Sociology</i>
SISTER ANNA MECHTILDA DOLIN, C.S.J., A.M.	
	<i>Professor of Classical Languages and Director of the Department</i>
SISTER BERNARD JOSEPH DUNNE, C.S.J., A.M.	<i>Associate Professor of English</i>
SISTER MARY ATHANASIA DUNNEBACKE, C.S.J., A.M.	<i>Professor of Chemistry</i>
SISTER MARY BERCHMANS FOURNIER, C.S.J., A.M., Cand. Ph.D.	
	<i>Professor of Modern Languages and Director of the Department</i>
MARCELLA CARLTON FRIES, B.S. in Home Economics	<i>Lecturer in Home Economics</i>
VIRGINIA LOUISE FUEHLEN, A.M.	<i>Social Representative</i>
REVEREND BENJAMIN ROBINSON FULKERSON, S.J., A.M., S.T.L.	<i>Assistant Professor of Religion</i>
SISTER JOSEPH ALOYSIUS GEISSERT, C.S.J., A.M.	
	<i>Dean of the College and Director of the Department of History</i>
SISTER MARY FREDERIC GLASER, C.S.J., A.M.	<i>Professor of Modern Languages</i>
SISTER MADELEINE SOPHIE GOLDKAMP, C.S.J., Mus.B.	<i>Instructor in Music</i>
SISTER MARIE FELICITE HANRATTY, C.S.J., A.M.	<i>Assistant Professor of History</i>
REVEREND JAMES J. HIGGINS, C.Ss.R., A.M.	<i>Lecturer in Religion</i>
GERTRUDE MARIE HORGAN, A.M., Ed.M.	<i>Instructor in English and Journalism</i>

In Memoriam



Sister Jeanne D'Arc Hurley, C.S.J., Ph.D.

*Professor of Home Economics and Director
of the Department*

APRIL 10, 1942

Handmaiden of the Lord

"She is not here; she is risen," we cry.

She is gone in joy and exultation

Beyond the portals where birds cannot fly;

Here is no reason for lamentation.

Spring burgeoned forth with new blossoms fair;

Dawn trumpets proclaimed the Eastertide,

And her soul made ready for joy so rare;

Christ stretched out His arms to greet His bride.

All things she suffered gladly in His name,

Whose glorious death a world redeemed;

Now angel choirs with "Hosanna" acclaim

The vision that through her pain brightly gleamed.

Burst wide the fettering bonds of earth's dark night;

Her soul glows before the Eternal Light.

G. M. H.

THE FACULTY

SISTER JEANNE D'ARC HURLEY, C.S.J., Ph.D.	<i>Professor of Home Economics and Director of the Department</i>
REVEREND JAMES S. KELLY, S.J., C.Ss.R.	<i>Lecturer in Religion</i>
SISTER ROSE AGNES KEYES, C.S.J., M.S.	<i>Instructor in Biology and Director of the Department</i>
SISTER M. HILDA LORSBACH, C.S.J., A.B.	<i>Assistant Professor of Economics</i>
SISTER MARY ALBERTA MAAS, C.S.J., Mus.M.	<i>Instructor in Music Theory</i>
EUGENE PAUL MONAGHAN, A.M., Cand. Ph.D.	<i>Instructor in Modern Languages</i>
CHARLES J. MULLIN, M.S.	<i>Instructor in Physics</i>
BELLE MARIE MULLINS, B.E., A.B.	<i>Assistant Professor of Dramatics and Director of the Department of Speech</i>
SISTER MARY ALFRED NOBLE, C.S.J., Ph.D.	<i>Professor of Psychology and Director of the Department</i>
REVEREND LEO J. OHLEYER, O.F.M., S.T.D.	<i>Professor of Religion</i>
SISTER MARY BERENICE O'NEILL, C.S.J., Ph.D.	<i>Professor of Education and Director of the Department</i>
SISTER ST. LUKE O'NEILL, C.S.J., A.B., B.S. in L.S.	<i>Assistant Librarian</i>
SISTER CATHERINE DE RICCI OSTERMANN, C.S.J., A.M.	<i>Professor of Chemistry and Director of the Department</i>
SISTER MARGARET JOHN PURCELL, C.S.J., A.M.	<i>Associate Professor of English</i>
MARIO GRACIANO SALVADOR, Mus.M., A.A.G.O.	<i>Instructor in Organ</i>
SISTER MARY LUCIDA SAVAGE, C.S.J., Ph.D.	<i>Professor of History</i>
SISTER MARY MARTHA SCOTT, C.S.J., M.S. in Home Economics	<i>Assistant Professor of Home Economics</i>
SISTER MARY MARGUERITE SHEELEY, C.S.J., M.S.	<i>Instructor in Biology</i>
SISTER MARY EDWINA TOBIN, C.S.J., A.M.	<i>Associate Professor of Classical Languages</i>
GERTRUDE TROEMEL, M.S.	<i>Assistant Professor of Art and Director of the Department</i>
SISTER SUSANNE MARIE VACHON, C.S.J., A.M.	<i>Registrar of the College and Instructor in History</i>
SISTER ROSE MARGARET VANDER ZANDEN, C.S.J., Mus.B.	<i>Instructor in Music Theory</i>
WELDON F. WHITLOCK, Mus.M.	<i>Instructor in Voice</i>
GWYNETTE CLAUDIA WILLIS, A.B.	<i>Instructor in Physical Education and Director of the Department</i>

COLLEGIATE life shall entitle every student to the pursuit of her intellectual ambitions to be executed in such a way that she shall not infringe upon the rights of others nor harm them by the neglect of her duties. The separate classes shall elect officers to administer justice and integrate into the scholastic routine such undertakings as the members deem prudent and necessary to the preservation of our ideals. By aiding the physical and moral defense of our college, they truly perform their function as classes.

To Provide FOR THE

Common



mon Defense

Seniors, We Salute You!

Adelaide Allen

A.B., English

C. S. M. C. '41, '42

Class Treasurer '41

Daisy Chain '41

Poetry Club '41, '42

Sigma Beta Mu, Treasurer '42

Sodality '39, '40, '41, '42

Who's Who '42



Mary Bass

B.S., Clothing

Class Treasurer '42

Home Economics Club '40, '41, '42

The Fontbonne for 1942

Anneliese Bauer

B.S., Dietetics

C. S. M. C. '39, '40, '41
French Club '39, '40, '41
Home Economics Club '39, '40, '41
Maid to May Queen '42
Press Club '39, '40
Sodality '39, '40, '41, '42



Aleen Block

A.B., English

Athletic Ass'n. '40, '41, '42.
Business Manager, "The Font" '41
C. S. M. C. '41, '42
Class President '41
Class Treasurer '40
Editor, *The Fontbonne* '42
Photo Editor, *The Fontbonne* '40, '41
Poetry Club '41, '42
Press Club, President '41
Sodality '42
Spiritual Council '42
Student Ass'n., President '42
Student Council '41
Who's Who '41, '42

The Fontbonne for 1942

Patricia Burke

B.S., Physical Education

Athletic Ass'n. '39, '40, '41, '42

C. S. M. C. '39, '40, '41, '42

Footlights Club '39, '40, '41, '42

Sodality '39, '40, '41, '42

Spiritual Council '42



Jane Duddy

B.S., Biology

Athletic Ass'n. '39, '40, '41, '42

C. S. M. C. '39, '40, '41, '42

Class Secretary '40

Maid to May Queen '40

Phi Beta Chi, Secretary '42

Sodality '39, '40, '41, '42

Student Council, Treasurer '42

Seniors, We Salute You!

Marguerite Fassero

B.S., Home Economics

C. S. M. C. '39, '40, '41, '42

Delta Phi, President '42

Home Economics Club, Treasurer '41

Home Economics Club, Vice-President '42

International Relations Club '41

Sodality '39, '40, '41, '42



Loraine Flynt

B.S., Chemistry

Athletic Ass'n., Secretary '42

Athletic Ass'n., Treasurer '40

Captain, Basketball Team '41

C. S. M. C., President '42

C. S. M. C., Secretary '40

Fontbonne Staff '42

"Font" Staff '39, '42

Phi Beta Chi, Treasurer '41

Phi Beta Chi, Vice-President '42

Press Club '39, '41, '42

Sodality '39, '40, '41, '42

Spiritual Council '40, '41, '42

Seniors, We Salute You!

Shirley Francis

A.B., Education

National College of Education, Evanston,
Illinois, '39, '40

Editor, F. E. D. '41

French Club, Vice-President '41



Dorothy Frank

B.S., Dietetics

Business Manager, "The Font" '39, '40

Footlights Club '39, '40

"Font" Staff '41, '42

Home Economics Club '39, '40, '41, '42

The Fontbonne for 1942

Mary Margaret Gibbons

B.S., Home Economics

Webster College, Webster Groves, Mo.,
'39, '40

C. S. M. C. '41, '42

Home Economics Club '41, '42

International Relations Club '41, '42

Phi Beta Chi '41, '42

Sodality '41, '42



Mary Patricia Hallinan

B.S., Chemistry

Junior College of Augusta, Augusta,
Georgia, '39, '40

C. S. M. C. '41, '42

Delta Phi, Treasurer '42

Phi Beta Chi '41, '42

Sodality '41, '42

The Fontbonne for 1942

Marion Mosberger Hummel

B.S., Biology

C. S. M. C. '39, '40, '41, '42
French Club, Treasurer '40
Phi Beta Chi '39, '40, '41, '42
Sodality '39, '40, '41, '42
Spiritual Council '39



Evelyn Hurley *A.B., English*

Editor, "The Font" '40, '41
Feature Editor, "The Font" '39
Feature Editor, *The Fontbonne* '42
Footlights Club '39, '40, '41, '42
Poetry Club, President '42
Press Club, Vice-President '42
Sodality '39, '40, '41, '42

Seniors, We Salute You!

Mary Teresa Klecan

B.S. Dietetics

College of St. Teresa, Kansas City, Mo.,

'39, '40

C. S. M. C. '41, '42

Home Economics Club '41, '42

Sodality '41, '42



Josepha Lorenz

A.B., Dramatic Art

Athletic Ass'n. '39, '40, '41, '42

Footlights Club, President '42

Poetry Club '40, '41, '42

Sodality '39, '40, '41, '42

Seniors, We Salute You!

Mary Alice Maguire

A.B., Music

C. S. M. C. '39, '40, '41, '42
Chairman, St. Joseph Committee '42
Class President '39
Class Vice-President '42
Footlights Club, Secretary '39
Maid to May Queen '39
Resident Students' Ass'n., President '42
Sigma Beta Mu, President '41
Sigma Beta Mu, Vice-President '42
Sodality '39, '40, '41, '42
Student Council '42



Ruth McNamara

B.S., Physical Education

Athletic Ass'n., Vice-President '41
C. S. M. C., '39, '40, '41, '42
Daisy Chain '41
Footlights Club '40, '41, '42
Sodality '39, '40, '41, '42

The Fontbonne for 1942

Mary Meyer

B.S., Dietetics

Athletic Ass'n. '39, '40, '41, '42

C. S. M. C. '39, '40, '41, '42

Class President '42

Home Economics Club, President '42

Sodality '39, '40, '41, '42



Lucille O'Connell

A.B., English

Athletic Ass'n. '39, '40, '41, '42

C. S. M. C. '39, '40, '41, '42

Daisy Chain '41

Las Teresianas, President '41

Poetry Club '41, '42

Sodality '39, '40, '41, '42

The Fontbonne for 1942

Arkie Lee Pratt

A.B., Education

Stephens College, Columbia, Mo., '39, '40

Maid to May Queen '41

Sigma Beta Mu '41, '42



Mary Riedel

A.B., Philosophy

C. S. M. C. '39, '40, '41, '42

Class Secretary '42

Phi Beta Chi '39, '40, '41, '42

Resident Students' Ass'n., Vice-President
'40

Sigma Beta Mu '39, '40, '41, '42

Sodality '39, '40, '41, '42

Who's Who '42

Seniors, We Salute You!

Roslyn Rohman

A.B., Sociology

C. S. M. C. '36, '37, '42

Delta Phi '42

Footlights Club '36, '37, '42

Glee Club '36, '37

International Relations Club, Secretary '37

International Relations Club, Vice-President '42

Legion of Mary '37

Sigma Beta Mu '36, '37, '42

Sodality '36, '37, '42



Marie Sansone

B.M., Music Theory

Athletic Ass'n. '39, '40

C. S. M. C., Vice-President '40

Glee Club, President '40, '41

Poetry Club, Secretary '40

Sigma Beta Mu, Secretary-Treasurer '41

Sodality Prefect '42

Student Ass'n., Treasurer '41

Who's Who '42

Seniors, We Salute You!

Alice Lee Sawyers

A.B., Dramatic Art

New Mexico State College, State College,
New Mexico, '39, '40

Athletic Ass'n. '41, '42

C. S. M. C. '41, '42

Glee Club '41, '42

Fonlbonne Staff '42

Footlights Club, Secretary '42

International Relations Club '42

Poetry Club, Vice-President '42

Resident Students' Ass'n., Treasurer '42

Sigma Beta Mu '41, '42

Sodality '41, '42

Spiritual Council '41



Jane Marie Simon

A.B., Mathematics

Athletic Ass'n. '40, '41, '42

C. S. M. C. '42

Classical Club, Secretary '42

Footlights Club, Vice-President '42

Phi Beta Chi, Treasurer '42

Sodality '39, '40, '41, '42

Spiritual Council '42

The Fontbonne for 1942

Mary Rita Wahlert

B.S., Chemistry

Athletic Ass'n. '39, '40, '41, '42
C. S. M. C. '39, '40, '41, '42
Class Vice-President '41
Fontbonne Staff '42
Footlights Club '39, '40, '41, '42
French Club '39, '40, '41, '42
Phi Beta Chi, President '42
Phi Beta Chi, Secretary '41
Press Club, Secretary-Treasurer '42
Sodality '39, '40, '41, '42
Spiritual Council '41, '42
Student Ass'n., Secretary '42
Who's Who '42



Rosemary Ward

B.S., Physical Education

Athletic Ass'n., President '42
Business Manager, *The Fontbonne* '42
Captain of Hockey Team '41
C. S. M. C. '39, '40, '41, '42
Class Secretary '41
Daisy Chain '40
Footlights Club '41, '42
Press Club '41, '42
Sodality '39, '40, '41, '42
Student Ass'n., Vice-President '42
Student Council '39
Varsity Hockey and Basketball Teams '39, '40, '41, '42
Who's Who '42



The Fontbonne for 1942

Dorothea Wells

B.S., Dietetics

Athletic Ass'n. '39, '40, '41, '42
Class Vice-President '40
Footlights Club '39, '40, '41, '42
Home Economics Club '39, '40, '41, '42
Maid to May Queen '39, '42
Phi Beta Chi '41, '42
Press Club '42
Sodality '39, '40, '41, '42



Sara Gasen

B.S., Dietetics

Sister Mary Reinhilda Aldrian, O.S.F.

B.S., Dietetics

Sister Agnes Genevieve Clark, C.S.J.

B.S., Chemistry

Sister Mary Jarlath McManus, C.S.J.

A.B., English

Sister Rose Adele Schuerman, C.S.J.

A.B., Economics

Sister Mary Hildegard Wehrmann, O.S.F.

B.S., Dietetics

Honors, 1941-42

MARY MEYER, Cum Laude, Kappa Gamma Pi

MARIE SANSONE, Cum Laude, Kappa Gamma Pi

MARY RITA WAHLERT, Cum Laude, Kappa Gamma Pi

Recipient of Alumnae Hood

Awarded for loyalty, leadership, and service
to the all-around Fontbonne girl

ALEEN BARBARA BLOCK



A glimpse of Fine Arts Building through the trees

Hidden beneath the reserved mannerisms of MARY MEYER lurks a vivacity that enlivens the efficiency with which she performs her duties as president of the senior class. The gaiety of her eyes and enchantment of her red hair make you tingle to her charms. In chemical parlance, she's a catalyst.



Poised and unassuming are the two words most applicable to MARGUERITE FASSERO, the Betty Crocker of the senior class. She's at home in anybody's kitchen and those Bohemian suppers she prepares are an important event in the social calendar of Delta Phi. Her fascinating braids lend a definite sophisticated note to her personality.



MARY MARGARET GIBBONS has all the wit and individuality to be two splendid people, but rolled into one package, she's a grand friend. As a dietitian, "Gibby" will be a cheery vitamin for all patients. Her "Hi, Willie" has a happy note that should send them waltzing right out of the hospital.



Our Task Is Defense of the Home Front

Page 34

MARY MEYER
MARGUERITE FASSERO
MARY MARGARET GIBBONS

And So the Yearbook Presses Roll



A human dynamo, that's ALEEN BLOCK. Her "makes you feel so good" personality, vivid for a girl twice her slight build, has led the student body straight along the beaten path. For executive ability, for sincerity without peer, for calm dependability, we give you the "Woman of the Year"—our editor.



Whether it be at a circus or a banquet, you'll find ROSEMARY WARD giving the occasion all she's got. An individualist in walk, talk, and repartee, Rosemary's always there to enliven serious situations. Is it any wonder that Fontbonne's outstanding athlete is also an outstanding leader, on and off campus?



Enter EVELYN HURLEY: blonde locks, amused blue eyes, and ready grin. Her mind is a composite of the finer things of life, plus the hilarious. Some day we'll probably be asking the famous Shirley La Hurley for her autograph, but in the meantime, here's a warning for all susceptible males: Milady possesses glamour!

ALEEN BLOCK
ROSEMARY WARD
EVELYN HURLEY



PAT BURKE



ROSLYN ROHMAN



MARY TERESA KLECAN

Those sparkling eyes and glowing cheeks belong to PAT BURKE, one of the few people who voices her honest opinion. This physical education major can make you turn hand-springs when her casual ways swim right into your heart. We're shooting baskets for you, Pat, and may you be the winner!

Unlimited credit to ROSLYN ROHMAN for her industrious spirit! How such a tiny girl carried a total of fifty credit hours in her senior year is beyond our plebeian comprehension. The strangest part of it all is that this smiling individual never rushes. In fact, rumor has it that she's the slowest thing this side of Georgia.

The warm friendliness that hides a shy manner is something we all admire in MARY TERESA KLECAN. Her disposition mirrors true sportsmanship. Then too, we admire those chameleon-like freckles that vanish in the winter and crop up like brown raindrops in the summer.

Composure Is the Password to Success

Gentle Humor Animates Their Sincerity

Miss Fashion Plate is synonymous with MARY BASS. Her skill at designing is excelled only by the neatness of her grooming. We can't wait for the day when we catch her with her hair uncombed and her face dirty. Incidentally, Mary is laboring under a terrific burden these days: a boulder-like diamond on her left hand, third finger.

ARKIE LEE PRATT possesses the remarkable quality of always looking the same. Her soft brown hair rambles into large, loose waves and her delicately colored lips part to let a hushed, warm voice steal forth with friendly words of welcome. She looks sedate, but is amusing.

To make the world a better place to live in is a simple problem in mathematics to JANE MARIE SIMON. A smile plus a kind word equals happiness in the hearts of others. But it's Janie's sincerity, not her ability to calculate, that enables her to provide a "Q.E.D." for other people's difficulties.



MARY BASS



ARKIE LEE PRATT



JANE MARIE SIMON

A Biology Major! Beauty takes to Science! JANE DUDDY alone fits this description. Tall, slender, dark haired, she possesses the ingratiating sweetness of that well-known genus, the Southern belle. Her beauty attracts you; her pleasing personality holds you. Little germs would never hide if they knew they'd catch her eye.

SHIRLEY FRANCIS seems to have achieved that manner de Paris, that very, very French touch, by merely becoming an eye-appealing fixture of Room 311, the nucleus of Parisian culture at Fontbonne. Her refined actions, slow-to-kindle smile, and interesting voice stamp her at once as someone unique and gracious.

LORAIN FLYNT is a typical Georgia peach. She's the poor little resident student who has lost all traces of her Southern accent. Is she an all-round athlete? Does she use her knowledge of chemistry to blast the enemy's offensive? Just take a look at those plaques in the den. You'll find your answer there!



Future Teachers Revel in Mirth and Lore

JANE DUDDY
SHIRLEY FRANCIS
LORAIN FLYNT

Three Little Outdoor Girls Are We!



ANNELIESE BAUER is a direct import from the old country and somewhat like those rare, mellow wines that bubble forth from its shores. There's a sparkle and a froth, then a slumbering calm and quiet. Herr Husband should be more then ecstatic with her soul-warming cooking, shiny dark tresses, and that delightful accent.



Smile by Pepsodent, bloom on the cheeks by Pevely, DOROTHEA WELLS is vivacious, captivating and gay, a la Robert Hope, Esq. As a dietitian, her cheerful voice and menu of charm are just what the doctor ordered for all bored patients. Dot's the ideal combination of the smooth sophisticate and the silly symphony.



If after five minutes of interesting conversation you feel you've known the effervescent young lady for a lifetime, your new-found friend is probably DOROTHY FRANK. You'll be able to recognize our product by the trademarks of eagerness, ambition, and friendliness.

ANNELIESE BAUER
DOROTHEA WELLS
DOROTHY FRANK



MARY RIEDEL



ALICE LEE SAWYERS



LEE MAGUIRE

You'd never guess that there is merriment hidden beneath that guise of a philosopher. MARY RIEDEL can make her mood suit any occasion. It's amazing how she's always on time without losing any of her neatness, not even from those enviable brushed waves to her polished shoes. Dogs and music and apples, that's the real life for Mary.

How ALICE LEE SAWYERS ever found time to gain all those achievements is a mystery to us. From her list of activities you'd never guess that she'd been at Fontbonne for only two years. Try to find some aspect of college life with which her name isn't connected! Her talents include poetry, dramatics, music, and ad infinitum.

She sings, she dances, she plays! She has a different coiffure for every day of the week! There are rumors that she's the little phantom who tutored Hull in diplomacy and Post in etiquette. Watch her slender fingers trip across the key board and be fascinated. Who's the genius? LEE MAGUIRE, of course!

Forceful Words Are Softly Spoken

True Friendship Will Forever Endure

Whenever we see a back flip or a handspring performed with exquisite perfection, we think of that little McNAMARA girl named RUTH. She's a very inconspicuous person and resembles every bit the ordinary friend whom you'd love to know better. Perhaps her most distinguishing features are her excellent posture and that Irish glint in her eye.

Orchids, fanfare, and all that sort of thing for the first member of the class of '42 to go up the aisle to the strains of the wedding march. We're all wishing MARION MOSBERGER HUMMEL loads of luck and happiness. Her calmness and composure should take her far into the realms of success.

Composer and musician excellente! MARIE SANSONE, shy and obliging, is everybody's ideal of applied talent. Ask her to play the clarinet; she's as good as Benny Goodman, and proud of it. As Prefect of the Sodality, Marie has kept situations well under control. Fontbonne pays tribute to her executive ability.



RUTH McNAMARA



MARION MOSBERGER HUMMEL



MARIE SANSONE

The name on the registrar's files reads ADELAIDE ALLEN, but she's "Tookie" to all of us. If you've never heard of New Madrid, then you don't know "Tookie." This little girl owes her knowledge of financial matters to being treasurer of the junior class, her accent to her home town, and her generosity to her attitude toward life.

MARY RITA WAHLERT may be oh so casual in appearance, but beneath this airiness is the spirit of a real student. Don't let that pained facial expression or those tremendous sighs deceive you—she really enjoys life! We understand that the government is looking for you, Mary Rita, in connection with a little matter of plastics.

MARY PAT HALLINAN is the blossom of Augusta, Georgia. Since Augusta's laws are different from those of the more conservative portions of the country, she still is unable to translate our legal code. Mary Pat's just a trifle shy and pensive, but all the vital force of her personality explodes in an argument.

Calm and Unhurried, They Enjoy Today



"TOOKIE" ALLEN
MARY RITA WAHLERT
MARY PAT HALLINAN

Their Life Is Laughter Never Fleeting



LUCILLE O'CONNELL
JOSEPHA LORENZ

LUCILLE O'CONNELL has a mighty Irish name to be getting an A.B. degree in English and a minor in Spanish. As for Italian, well, that simply rolls off the tip of her tongue. What an asset she'd be at a peace conference! Her abundance of energy is the envy of the senior class, not to mention her black hair and blue convertible.

JOSEPHA LORENZ is Fontbonne's contribution to the legitimate theatah! Drama and comedy are both adapted to her talents, but being another Gene Krupa on the drums, she'll probably fool the dramatic department and become the leader of a swing band. Meanwhile, the purchasing of multitudes of novel earrings appears to be her aim in life.

SENIOR CLASS OFFICERS

MARY MEYER	<i>President</i>
MARY ALICE MAGUIRE	<i>Vice-President</i>
MARY RIEDEL	<i>Secretary</i>
MARY BASS	<i>Treasurer</i>



MARY MEYER, MARY ALICE MAGUIRE, MARY RIEDEL,
MARY BASS

Juniors Break All Energy Records

BETTY BOLL	<i>President</i>
MARJORIE BOEVING	<i>Vice-President</i>
MARY ALICE CHANDLER	<i>Secretary</i>
HELEN MACAULEY	<i>Treasurer</i>

Versatility dominates the members of the junior class, for their dull moments are merely breathing spells between something very exciting. Beginning in September they amazed the freshmen at a garden party with honest to goodness "posees" in ice cream flower pots.

During October the Juniors tested their equilibrium at a roller-skating party and some had barely recovered by the time the class presented two showings of the movie "Little Women." They were completely de-energized by the Junior English test and worried about passing but the next day they became beauty fans and came en masse to applaud the crowning of MARY ALICE GUELKER, Queen of the Penny Circus, on Hallo-we'en night.

Not being selfish, the juniors decided to judge beauty from another standpoint and sponsored a Baby Photo Contest. JOAN SANDERS, a

freshman, was judged "the personality kid" and awarded first prize. Still contest-conscious, the class remedied the problem of the school's nameless puppy and after due publicity, the dog's official name was announced as "Blitz."

From this time on, the juniors busied themselves with the plans for the main social event on the school calendar, the honoring of the senior class at a formal dinner, to which the entire student body was invited. The Formal Banquet was held this year at the Missouri Athletic Club, February 2. The morning following, the juniors gave a sigh of regret and settled down to the serious business of studying and of serving as chief cafeteria patronizers in the minutes between classes. When the class of '43 wasn't occupied with the task of raising money, they were capably assisting in Sodality and publication work. The best of luck to next year's seniors!





LORRAINE ASH
OLIVE BAER
MARJORIE BOEVING

BETTY BOLL
CATHERINE CALLIER
MARY ALICE CHANDLER

BETTY BOLL
MARY ALICE CHANDLER
HELEN MACAULEY
MARJORIE BOEVING

LOUISE COLOMBO
YVONNE CORNU
DOROTHY DANIELS
HELEN DECOURSEY
FRANCES DLUGON

ALVERA GROSSE
MARY ALICE GUELKER
CECILIA HEDERMAN
KATHERINE HERNAN
BETTY HIGGINS

RAINALDA IGOE
MARGARET LEAHY
HELEN MACAULEY
ANN MAPEL
SYLVIA MASTRO

LENORE MCCARTHY
MARY LOUISE MENGES
AUDREY MURPHY
AUDREY NAUMANN
EVELYN NUMAINVILLE

BARBARA RAUPP
MARY VIRGINIA RICHARD
MARY ALICE SCHNEBLIN
VIRGINIA SCHINDLER
MARIAN WEBER

'44 Boosts Morale

CATHERINE PENDERGAST *President*

EDWINA WRIGHT *Vice-President*

KATHLEEN BURKE *Secretary*

LOUISE LABARGE *Treasurer*

The sophomore class has an outstanding record for boosting morale along the home front by contributing fervor and grace to the school's social calendar.

During the latter part of September, the sophomores feted the new freshmen with an old-fashioned box lunch picnic. As a result of this the sophomores felt that they had done their part for the nation's health defense by seeing that the new students were well-nourished.

Before the girls left school for the Thanksgiving vacation, the sophomore socialites gave a party at Westborough Country Club to start the week's festivities.

On Mardi Gras night, the class sponsored a costume party for the benefit of the Organ Fund. Prizes were given for the most attractive costumes. Favorite movies seemed to be the main inspiration for the party-goers since "The Corsican Brothers" and "The Cowboy and the Lady" were awarded first and second prizes.



EVELYN AUBUCHON
JACQUELINE BALSER
JEAN BALSER
JACQUELIN BROE
KATHLEEN BURKE
JANE CALLAHAN

KATHLEEN CARROLL
DOROTHY CASEY
MARY CATALDI
ROSEMARY DANIEL
MARY DOERING
PATRICIA DUGGAN

FAITH FRICKE
DOROTHY GRAF
MARY HACKETT
BETTIE KNETZGER
LOUISE LABARGE
DORIS LAMPING

PATRICIA LUCE
MURIELLYN Mc
MARY McCABE
MARY McKEON
ANNES MENGES
JACLYN MEYER



FAITH FRICKE
DOROTHY GRAF
MARY HACKETT
BETTIE KNETZGER
LOUISE LA BARGE
DORIS LAMPING

PATRICIA LUCE
MARILYNN McATEER
MARY McCABE
MARY McKEON
AGNES MENGES
JACLYN MEYER

ROSEMARY MURPHY
SUZANNE NACHTMANN
GRACE NOONAN
GLORIA PANDJIRIS
CATHERINE PENDER-
GAST
JOSEPHINE RIZZIE

CATHERINE PENDER-
GAST
ALICE RYAN
HENRIETTA SABADELL
DOROTHY SACKBAUER
BETTY SCHUH

LOUISE LA BARGE
KATHLEEN BURKE
LAURA SLAUGHTER
RITA SMITH
PATRICIA SWEENEY
ROSEMARY WALSH

EDWINA WRIGHT
ENID WILLIAMS
ROSEMARY WOELFLE
EDWINA WRIGHT

'45 Reports for Duty

BEATRICE BURKE	<i>President</i>
MARY JANE QUIRK	<i>Vice-President</i>
ELIZABETH LUCAS	<i>Secretary</i>
HENRIETTA BINDER	<i>Treasurer</i>

Latest rumors indicate that the freshman class is trying its best to achieve perpetual motion. Not content with reporting for a week of orientation, they continued it throughout the year and learned much more than making the journey to the library without the usual "collegiate collapse" on the last flight of stairs.

After a week of parties in their honor, the freshmen tore their hair over a number of aptitude tests in which Rosemary Holden and Patricia Donley ranked highest. On College Day the class skit was a humorous one telling of the bewildering experiences that registration holds for new students.

Participation in school activities was outstanding among the freshmen. Even on the coldest day, these "never say die" players could be seen on the hockey field, playing with all their might. A number of the class also made the varsity basketball team.

One of the most praiseworthy projects of the class of '45 was the attendance at Mass each day by a different girl for the intention of the armed forces. In this way a continuous chain of prayers was established.

During March the freshman class co-operated with the sophomores in giving a series of teas for prospective students from the senior classes of the various high schools throughout the city.

As a climax to their lives as freshmen the class entertained an enthusiastic group of fellow students at a spring party early in May.

HENRIETTA BINDER
MARY ELLEN BOGGIANO
JOAN BRANDT
BEATRICE BURKE

THERESA BUSSMANN
JACQUELINE CASEY
LAVERNE CONNORS
AGNES COSTELLO

PATRICIA CRATTY
JEANNE CUNNINGHAM
ANITA DiSTEFANO
PATRICIA DONLEY

LORAIN EBERT
MARY ELLEN FAGEN
NAOMI GITTINS
ANNE MARIE HEBBERGER

BETTY ANN HUGHES
LETA MAE HUMMEL
GLORIA JOHNSTON
ROSEJOAN KISLING

FRANCES LYNCH
LEE MARSALA
MARGARET METZGER
ROSALIND MIERA

ROSEMARY OBERMUELLER
MARGARET O'MEARA
MARY O'REILLY
JACQUELINE OVERTON

BETTY REID
ANNA SANSONE
MARILYNN SAPPINGTON
RUTH SCHINDLER

MARJORIE WALKER
JEANNE WILLARD
MARY ADELE WINTZ
ALICE WOTAWA





BEATRICE
BURKE
LORAIN
EBERT
ELIZABETH
LUCAS
HENRIETTA
BINDER

ALICE
HENSCHKE
ROSEMARY
HOLDEN
JEAN
HOULEHIN
MARY HUFF

MARY VIRGINIA
KOHL
MARY KRAMO-
LOWSKY
MARGARET
KULONOWSKI
ELIZABETH
LUCAS

JEANNE
MOONEY
FRANCES
MORSE
JUANITA
MUDD
MARY KATHRYN
MUELLER

YVONNE
PASCAL
RITA
PERKINSON
MARY JANE
QUIRK
BETTY RAUPP

MARY KATHA-
RINE SCHULER
MARY JANE
SCOTT
GLORIA
SICKING
CECILIA
SPRINGMAN

EILEEN
WISS
CLARA MARIE
WITTE
GENEVIEVE
WOLF
DOLORES
YANN



Anatomy students examine models

Embryonic artists sketch designs

Play Production class majors in construction

Table setting in the formal manner

Future dietitians experiment with recipes

Camera Invades Lecture Rooms and Labs

Informal shots of some of the classes are given in this section to portray the actual classroom procedure and the surroundings in which the students work. A class in Anatomy shows the girls studying models and instructive charts during their laboratory period before beginning actual dissection. Rosemary Ward effectively shows what the well-dressed student in Play Production wears while working on sets for a

school play. As Gloria Johnston puts the final touches on a drawing, Mary Doering submits hers to Miss Troemel, Art instructor. In Meal Planning class, Betty Higgins and Audrey Naumann learn the correct method of table serving from Miss Carmody. As students in Experimental Cookery, Cecilia Hederman, Peggy Leahy, and Ann Mapel find that a basic recipe can be varied in many ways.

Students Prepare for Professional Work

Mastery of the microscope is essential in studying Biology, according to Sister Rose Agnes. She directs Marion Hummel, Audrey Murphy, Jane Duddy, and Mary Pat Hallinan in making accurate drawings from the slides they examine under the microscope. Miss Aird looks on as her students practice the splints and bandages they have learned in First Aid. Rosemary Murphy discovers in Radio Technique

that effective script reading requires a certain stance while Miss Mullins, instructor, stands at the controls and offers suggestions. Members of the Bowling team carefully study Miss Willis' position when she rolls the ball down the alley. Sister Alberta explains a passage to Dorothy Sackbauer, Patricia Sweeney, Marie Sansone, Alice Lee Sawyers, and Lorraine Ash, members of her Instrumentation class.

Biology students classify specimens

Keglers learn the proper grip

Quiet please! We're on the air

First Aiders come to the rescue

Musical talent is developed here





Education Is D mo

Members of this group are unique among colleges, for Fontbonne is the only college offering a major in The Family. Dr. Clemens' little girl obliges by taking her bottle from a class member.

Organic Chemistry involves careful laboratory work as shown by Catherine Callier who is making certain that none of the gas she is preparing escapes. Cecilia Hederman, performing her own experiment, watches.

Jacquelin Broe tries her skill at saddling a horse while Mr. Sanders, instructor in Horseback Riding, looks on to see that the girth is tightly fastened.

Classes in Organ are conducted by Mario Salvador, accomplished organist. He demonstrates to Lorraine Ash the proper tone to use in playing a selection.

As part of the freshman Orientation Class, Miss Baer, librarian, shows the method used in cataloging books to Henrietta Binder, Leta Hummel, and Mary Kramolowsky.

Democracy in Action

Barbara Raupp presides over a seminar in Medieval Philosophy. At each seminar a different member of the class leads the discussion on topics selected by Mother Mary Pius, instructor.

The degree of concentration required for Braille work is indicated by Mary Virginia Richard and Rainalda Igoe. Transcribing books into Braille is one of Fontbonne's major contributions to Red Cross work.

Mary Teresa Klecan begins a period costume while Jacqueline Balser, Mary Margaret Gibbons, and Virginia Schindler examine models they have already completed as members of the History of Costume class.

Students of the beginning class in typing present the picture of secretarial efficiency as they await Sister Hilda's signal to begin a speed test, to judge their improvement.

As Evelyn Hurley and Aleen Block look on, Miss Horgan points out style and effective make-up in current newspapers for her Journalism class.



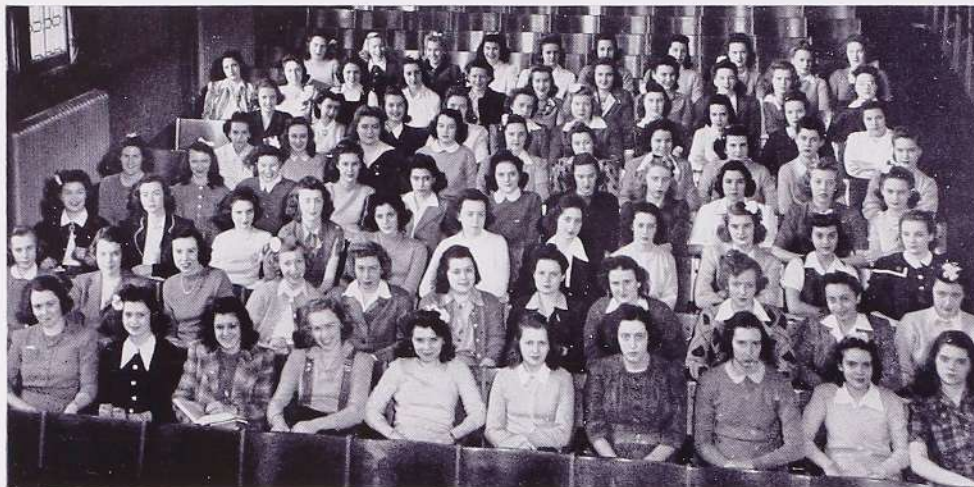
WELL-ROUNDED collegiate life entails active membership in an organization. For this reason, our college offers a list of clubs to fulfill this need. Each student selects her field for club work, engaging in projects not only relative to major fields but also enabling her to participate in an avocational interest. Under the direction of competent moderators, each club promotes study in related subjects extending the education of the students, developing poise, initiative, and a practical understanding of parliamentary law. The schedule thus adhered to fixes the ideals of unity and cooperation in the minds of the club members.

To Form A More

Perfect



fect Union



The Fontbonne Unit of the Catholic Students' Mission Crusade

“Prayer, Study, Sacrifice” Is Slogan of C. S. M. C.

A call to action! With the declaration of war, the Catholic Students' Mission Crusade found itself knee-deep in work on defense plans. Catholic literature, missals, prayer books, rosaries, and other articles were gathered together, packed in boxes for the soldiers and sent to camps in all parts of the United States and to the island outposts.

To make up the program of study, a series of informal talks was presented to acquaint the girls with the different fields of mission work.

The slogan, “Prayer, Study, and Sacrifice,” was carried out under the leadership of Loraine Flynt, president of the organization. The members prayed for victory and peace, made a study of the foreign missions, and offered sacrifices for the attainment of the brotherhood of man in the Fatherhood of God.

MISSION BOXES

Fort Bliss	Texas
Camp Eustace	Virginia
Jefferson Barracks	Missouri
Fort Leonard Wood	Missouri
Camp Livingston	Louisiana
Pearl Harbor	Hawaii
Camp Roberts	California
Camp Robertson	Arkansas

OFFICERS

LORAIN FLYNT	President
OLIVE BAER	Vice-President
MARY V. RICHARD	Secretary-Treasurer

Eta Sigma Phi Studies Classics

OFFICERS

HARRIET PADBERG	<i>President</i>
Maryville College	
HELEN RITTER	<i>Vice-President</i>
Webster College	
JANE M. SIMON	<i>Secretary</i>
Fontbonne College	
JOHN KRIEGER	<i>Treasurer</i>
St. Louis University	

TOPICS DISCUSSED

Julius Caesar—Soldier and Statesman
Cicero's Writings in Rhetoric and
Philosophy
Virgil as Poet of Herdsman and
Farmer
Horace as a Poet of Epodes, Satires,
and Letters
Great Prose Latin Writers from
Fourth to Fourteenth Century

We don't want you to breathe a whisper of this to anyone, but we, the girls of dear old Fontbonne, have fraternity members in our midst! Would you believe it, Mr. Ripley?

Perhaps this simple equation will enlighten your minds: Fontbonne + Maryville + Webster + St. Louis University + classical enthusiasm = the Beta Zeta chapter of the National Classical Fraternity, Eta Sigma Phi.

Better known as the Classical Club, it is directed by Dr. Korfmacher of the University and aims to promote an interest in and a wider recognition of the classics. Nor does the club confine its activities to college students. "Young uns" from the various high schools are invited to the meetings and an annual essay contest is sponsored to arouse enthusiasm.

Meetings are enlivened by stirring debates on the need of Latin and Greek. No, they don't have to call the riot squad.

First row: R. IGOE, T. ALLEN, Y. CORNU, J. M. SIMON, E. HURLEY, A. MURPHY, P. LUCE, L. COLOMBO
Second row: K. CARROLL, R. WALSH, H. MACAULEY, S. MASTRO, H. SABADELL, L. ASH, A. L. SAWYERS, M. SANSONE



OFFICERS

MARGUERITE FASSERO	<i>President</i>
MARY V. RICHARD	<i>Secretary</i>
MARY P. HALLINAN	<i>Treasurer</i>
BETTY HIGGINS	<i>Publicity</i>



MARY V. RICHARD, MARY P. HALLINAN
MARGUERITE FASSERO, BETTY HIGGINS



Seated: A. GROSSE, M. DOERING, M. V. RICHARD, R. ROHMAN, M. WALKER, J. CUNNINGHAM, E. LUCAS, F. MORSE, C. CALLIER

Standing: J. CASEY, A. NAUMANN, M. BASS, B. HIGGINS, G. JOHNSTON, M. FASSERO, M. P. HALLINAN, B. REID, M. WEBER

Delta Phi Mystifies with Marionettes

Where were you the afternoon of March 2? What do you know of the cruel and savage murder of sweet young Julia? If your mind is a complete blank when it comes to this weird prank, then you should have seen "The Case of the Speckled Band," a Sherlock Holmes marionette show presented by the members of Delta Phi. The fact that it was riotously comical and skillfully performed is eclipsed only by the knowledge that the club both

made and dressed the puppets and designed and fashioned the scenery.

The prize-winning chapeaux designed by the pledges rivaled the creations of Dache and Schiaparelli. Dache may be original but she is probably not as thrifty as these students who fashioned their creations out of odds and ends of material. Their efforts were rewarded with a Bohemian supper and club membership.

Penny Circus Highlights F. A. A. Year

"Step right up, ladies and gentlemen, and see the greatest little show in the entire county of Clayton, just one-tenth of a dime for an evening worth a million!" The barker's shrill cry, squeaking pop-corn, cavorting clowns, and mysterious glimpses into the crystal ball of the future all conjure memories of the F. A. A.'s overwhelmingly successful Penny Circus.

Hard-fought hockey and basketball tilts kept the girls' waistlines down and their

spirits up for the annual Spring Horse Show, that gala occasion when Fontbonne once more pounds the prairie and graces the tan-bark.

At the close of the year an award dinner was given in recognition of those who have distinguished themselves in basketball, track, and hockey. A special award was given this year to Rosemary Ward who had more points in the F. A. A. than any other student has gained in the past eighteen years. Hats off to the outstanding athlete of the year!

First row: E. HURLEY, M. GUELKER, R. IGOE, B. BOLL, K. HERNAN, R. WARD, L. FLYNT, L. LA BARGE, M. SCHULER, B. KNETZGER, M. McATEER

Second row: M. R. WAHLERT, L. CONNORS, A. HEBBERGER, L. HUMMEL, P. CRATTY, F. MORSE, J. DUDDY, J. M. SIMON, D. WELLS, R. DANIEL, M. McCABE

Third row: M. QUIRK, A. MURPHY, P. DONLEY, O. BAER, M. KOHL, D. LAMPING, C. PENDERGAST, A. SANSONE, R. HOLDEN, J. CUNNINGHAM, R. MURPHY, G. PANDJIRIS, B. BURKE

Fourth row: L. O'CONNELL, J. CALLAHAN, J. MUDD, H. SABADELL, A. BLOCK, J. HOULEHIN, J. CASEY, E. LUCAS, R. KISLING, M. McKEON, R. McNAMARA, M. BOGGIANO, P. BURKE



LORAIN FLYNT, BETTY BOLL, KATHERINE HERNAN, ROSEMARY WARD



OFFICERS

ROSEMARY WARD	President
KATHERINE HERNAN	Vice-President
LORAIN FLYNT	Secretary
BETTY BOLL	Treasurer



First row: K. HERNAN, B. HIGGINS, BARBARA RAUPP, M. V. RICHARD, G. PANDJIRIS, D. SACKBAUER
Second row: M. McCABE, L. CONNORS, M. J. QUIRK, A. SANSONE, R. PERKINSON, D. WELLS, K. CARROLL, L. FLYNT, D. CASEY
Third row: E. HURLEY, M. E. BOGGIANO, J. HOULEHIN, E. LUCAS, BETTY RAUPP, S. NACHTMANN, A. MURPHY, K. BURKE, A. BLOCK



GLORIA PANDJIRIS, MARY V. RICHARD, BARBARA RAUPP, EDWINA WRIGHT, BETTY HIGGINS, KATHERINE HERNAN

STAFF

BARBARA RAUPP	Editor
MARY V. RICHARD	City Editor
BETTY HIGGINS	Business Manager
EDWINA WRIGHT	Feature Editor
GLORIA PANDJIRIS	Advertising Manager
KATHERINE HERNAN	Circulation Manager

Font Presses Report News The American Way

The voice of the people tempered by the restraint imposed by the obligations of the press is "The Font," our student newspaper. Trailing in state behind its name is a vast assemblage of imposing initials and various press association memberships. Most cherished are those seals of acceptance of the Catholic School Press Association and the Associated Collegiate Press.

"Copy, copy! Who's got the copy?" has become the harried workers' theme song. But somehow, "in bulk or dips," it reaches the printer without too many heads turning white in the process.

The staff is contemplating community prayer each month for that beautiful manna from the heavens, advertising. They're firmly convinced that the little man who wasn't there must have a priority on it this season.

Staff Advances from Sunset to Reveille

We, the *Fontbonne* staff, have taken the offensive to meet the deadline for your book. Through endless nights we have competed in turning out sparkling copy to the clacking of typewriters, then plodded wearily across the paper-cluttered Press Room floor to "revise!"

From Freshman Week to the close of school, flash bulbs exploded all over the place as our photographers snapped you at work and play to bring you this pictorial memory of college life in 1942.

A fanfare of praise goes to "Ye Ed," the business staff who rationed the money according to the budget, and to all who volunteered time and effort to give you priority on our conception of the democratic way.

STAFF

ALEEN BLOCK	Editor
ROSEMARY WARD	Business Manager
EVELYN HURLEY	Feature Editor
BETTY HIGGINS	Photo Editor
MARY V. RICHARD	Photo Editor



BETTY HIGGINS, EVELYN HURLEY, ALEEN BLOCK,
ROSEMARY WARD

First row: A. MENGES, R. KISLING, BARBARA RAUPP, BETTY RAUPP, J. HOULEHIN,
E. HURLEY, A. BLOCK, R. WARD, K. BURKE
Second row: D. SACKBAUER, M. R. WAHLERT, L. FLYNT, A. MURPHY, M. J. QUIRK,
A. SANSONE, L. CONNORS, R. PERKINSON, A. L. SAWYERS, E. LUCAS, J.
CUNNINGHAM, M. V. RICHARD, B. HIGGINS





First row: Y. PASCAL, G. SICKING, B. RAUPP, M. McATEER, P. DUGGAN, P. LUCE, M. MUELLER, L. LA BARGE, M. SCHULER, J. MOONEY, A. SANSONE
Second row: R. HOLDEN, R. McNAMARA, M. BOGGIANO, E. HURLEY, M. MENGES, M. R. WAHLERT, E. LUCAS, M. McKEON, B. KNETZGER, J. HOYLEHIN, M. WINTZ, D. WELLS
Third row: R. WARD, R. PERKINSON, P. BURKE, J. CUNNINGHAM, R. ROHMAN, S. NACHTMANN, A. SAWYERS, M. BOEVING, J. SIMON, A. MURPHY, J. LORENZ, R. MURPHY, B. BOLL, J. CALLAHAN

"Seven Little Rebels" and "Jane Eyre" Enchant All

When we speak of the upholders of the legitimate stage at Fontbonne, we speak with pride. For this is our Footlights Club. Their talent scouts are everywhere, combing the landscape for genius. At the annual fall initiation more pledges were admitted than ever before in the history of the club.

For the Footlights Club's fall presentation something new and different was chosen, a complete turnabout from past selections. "Seven Little Rebels," an experiment in the realm of the children's theater, was so successful that it bears promise of repetition.

"Jane Eyre," the club's spring production with Jeanne Cunningham sweet and wistful in the leading role, provided possibilities for characterization. Portraying their parts admirably, the cast was well rewarded in the applause of an appreciative audience.



ALICE L. SAWYERS, AUDREY MURPHY, JANE M. SIMON, JOSEPHA LORENZ

OFFICERS

JOSEPHA LORENZ	President
JANE M. SIMON	Vice-President
ALICE L. SAWYERS	Secretary
AUDREY MURPHY	Treasurer

Vive La France! Is Their Cry

OFFICERS

YVONNE CORNU	President
SHIRLEY FRANCIS	Vice-President
EVELYN NUMAINVILLE	Secretary
LOUISE COLOMBO	Treasurer



SUZANNE NACHTMANN, EVELYN NUMAINVILLE, LOUISE COLOMBO, YVONNE CORNU

There'll always be a France. At least, those are the cherished sentiments of the French Club members, who refuse to be daunted by the unholy turn world events have taken. If the serpent with the mustache is ever bounced over France's borders (preferably to the west and into the deep blue sea), this club will be the first to shout "nous avons changé tout cela!"

The meetings of this group, which are always friendly and informal, are preserving the French culture. Customs, architecture, literature, and the lives of famous patriots form the outline of their discussions. Stressed above all is the facility to speak the language in the *informal* manner. In other words, the members converse entirely in French, using only the authentic Parisian accent.

First row: L. COLOMBO, Y. CORNU, B. KNETZGER, E. NUMAINVILLE, M. V. KOHL
 Second row: A. M. HEBBERGER, R. WOELFLE, J. MEYER, P. LUCE, H. MACAULEY, S. NACHTMANN
 Third row: S. FRANCIS, L. LA BARGE, D. DANIELS, M. DOERING, R. SCHINDLER, A. COSTELLO, B. RAUPP, A. BAUER, M. R. WAHLERT



OFFICERS

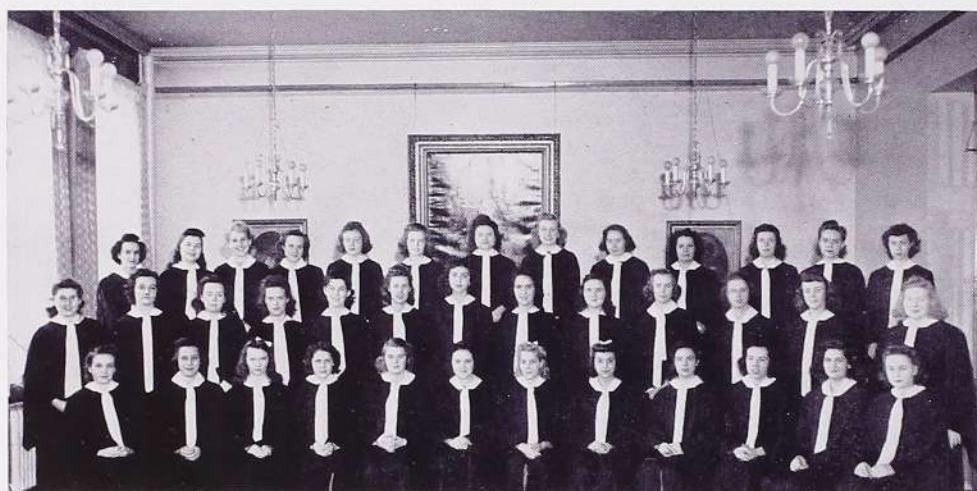
EVELYN NUMAINVILLE . *President*

MARY E. BOGGIANO . *Secretary*

HENRIETTA SABADELL . *Treasurer*



MARY E. BOGGIANO, EVELYN NUMAINVILLE,
HENRIETTA SABADELL



First row: R. PERKINSON, S. NACHTMANN, L. CONNORS, L. LA BARGE, J. CUNNINGHAM,
E. NUMAINVILLE, H. SABADELL, M. E. BOGGIANO, C. M. WITTE, L. MAGUIRE,
J. OVERTON, H. BINDER

Second row: Y. PASCAL, A. M. HEBBERGER, A. L. SAWYERS, B. BURKE, K. CARROLL,
M. BOEVING, A. SANSONE, M. SANSONE, J. MOONEY, G. PANDJIRIS, D. SACKBAUER,
G. NOONAN, A. MURPHY

Third row: N. GITTINS, M. MCCABE, B. HUGHES, B. BOLL, A. RYAN, K. BURKE,
A. DiSTEFANO, M. SCHULER, P. HACKETT, M. McATEER, J. RIZZIE, J. BRANDT,
R. KISLING

Glee Club Voices Blend in "The Messiah"

If it's a "dark horse" you're searching for in Fontbonne's extracurricular competitions, then by all means select the Glee Club as your favorite. For our student version of the "angel choir" is rapidly sprouting into one of the most important organizations in the college.

The club tested its powers at a preview, December 1, favoring the student body with an exclusive performance on St. Cecilia's Day.

Their next venture was Handel's "The Messiah." The soft, chanted blend of deep contraltos and delicate sopranos was comparable only to the beauty of their selection. The "artistes" reward was a buffet supper and a command performance at the St. Joseph Mother House in Carondelet.

We still point with pride to the favorable mention the club received for its entertainment at the Junior C. of C. banquet.

Red Cross Comes to Home Ec. Club

Meet Uncle Sam's favorite nieces! The Home Economics Club girls are in the know about nutrition and vitamins and all other phases of Home Economics that are being stressed so much today.

Entertaining potential members with a buffet supper, the club began its activities for the year. Service pins from the National Home Economics Association were awarded to Isabelle Mansour, the former president, Marguerite Fassero, and Betty Higgins.

Christmas projects were begun and the members completed a number of layettes, dresses, and stuffed animals for needy families.

To acquaint the members with the branches of the Red Cross, Mrs. J. F. Duggan addressed the club on the various service divisions in the Red Cross and suggested projects best suited to the member's interest. In conjunction with this, the college was assigned a sewing project by the Red Cross Headquarters.

Seated: M. WALKER, B. SCHUH, M. M. GIBBONS, C. CALLIER, K. BURKE, B. HIGGINS, M. FASSERO, Y. CORNU, M. MEYER, P. DUGGAN, A. NAUMANN, G. PANDJIRIS, E. WISS

Standing: E. AUBUCHON, A. GROSSE, M. WEBER, L. SLAUGHTER, A. RYAN, A. BAUER, C. HEDERMAN, D. WELLS, M. BASS, P. LEAHY, A. MAPEL, A. MENGES



BETTY HIGGINS, AUDREY NAUMANN, MARY MEYER, MARGUERITE FASSERO



OFFICERS

MARY MEYER	President
MARGUERITE FASSERO	Vice-President
BETTY HIGGINS	Secretary
AUDREY NAUMANN	Treasurer



Seated: R. IGOE, Y. CORNU, L. SLAUGHTER, R. DANIEL, M. A. CHANDLER, R. ROHMAN, D. CASEY, K. BURKE, E. AUBUCHON, M. A. GUELKER

Standing: L. MCCARTHY, M. M. GIBBONS, K. HERNAN, R. SCHINDLER, M. DOERING



DOROTHY CASEY, ROSLYN ROHMAN, MARY A. CHANDLER, KATHLEEN BURKE, ROSEMARY DANIEL

OFFICERS

MARY A. CHANDLER	President
ROSLYN ROHMAN	Vice-President
ROSEMARY DANIEL	Secretary
DOROTHY CASEY	Treasurer
KATHLEEN BURKE	Publicity

Sociologists Do Bit in Peace Program

If the International Relations Club, nee the Diplomats, and recently christened the Social Peace Club, proposes to justify its title in this turbulent year of 1942, it most assuredly will have a long road stretching out toward its ideal. Incorporated in the new aims of the group are the study and application of the Pope's Peace Plan, and the fostering of volunteer social work under the supervision of Father Scheller.

Outstanding guest speakers were Judge Michael Scott of the Probate Court, who discussed the acute, present-day problem of juvenile delinquency, and Monsignor Leo Steck, who explained the Rural Life Conference Program before the convention of the group was held in Jefferson City. Following the meeting, two members were chosen as representatives to the conference.

Camera-Minded Scientists Go for Sound

Meetings of Phi Beta Chi have taken on a new note this year with the addition of a sound projector to the equipment of the science department. Illustrated lectures have made the members of the club so learned that at the Missouri Academy of Science Convention in Kansas City, Phi Beta Chi delegates were well qualified to give papers.

Mary Rita Wahlert, representing the Chemistry department, gave a paper on "Plastics" and Audrey Murphy from the Biology department talked on "The Economic Importance of Fungi."

Recipients of the coveted Phi Beta Chi awards are two freshmen students ranking highest in Biology and Chemistry. This year awards have been made in Biology to Anne Marie Hebbberger and in Chemistry to Gloria Johnston.

OFFICERS

MARY R. WAHLERT	President
LORAIN FLYNT	Vice-President
JANE DUDDY	Secretary
JANE M. SIMON	Treasurer



MARY R. WAHLERT, JANE M. SIMON,
JANE DUDDY, LORAIN FLYNT

Seated: D. WELLS, J. M. SIMON, L. FLYNT, M. R. WAHLERT, J. DUDDY, M. RIEDEL,
M. M. GIBBONS

Standing: B. HIGGINS, A. NAUMANN, B. RAUPP, C. HEDERMAN, P. LEAHY, M. P.
HALLINAN, R. IGOE, A. MURPHY





Seated: A. BLOCK, T. ALLEN, H. SABADELL, B. KNETZGER, A. L. SAWYERS, E. HURLEY, B. RAUPP, A. MURPHY, L. O'CONNELL

Standing: M. SANSONE, L. COLOMBO, J. LORENZ, L. ASH, E. NUMAINVILLE, E. WRIGHT, R. MURPHY, M. McKEON, M. V. RICHARD, S. MASTRO

Catholic Mystic Poets Give Poetry Club Year's Theme

A Poetry Club gathering is the place where all hidden literary ambitions and talents are brought to the light of a critical audience. And don't imagine for a second that it doesn't require courage to stand before this group, nationally affiliated with the Catholic Poetry Society of America, and rattle off your first feeble attempt at poetry without suffering severe qualms of the heart and knees.

This year, the club chose as its theme Catholic poets of the nineteenth century. This included the lives and works of such famous writers as Francis Thompson, Gerard Manley Hopkins, and Alice Meynell.

With everyone sacrificing for defense, the members voted to omit their annual spring party and donate the funds to the Mission Society for expenditure upon the boys at camp.



BARBARA RAUPP, ALICE L. SAWYERS,
AUDREY MURPHY, EVELYN HURLEY

OFFICERS

EVELYN HURLEY	President
ALICE L. SAWYERS	Vice-President
AUDREY MURPHY	Secy.-Treas.
BARBARA RAUPP	Corresponding Secretary

Press Club + Play = Yearbook

OFFICERS

BETTY HIGGINS *President*

EVELYN HURLEY *Vice-President*

MARY R. WAHLERT *Secy.-Treas.*



EVELYN HURLEY, BETTY HIGGINS,
MARY R. WAHLERT

You may think you've been bombarded in the past by high-pressured sales chatter, but you've never been properly and completely assailed until a Press Club member has approached you and begged and cajoled ye innocent victim into purchasing two orchestra tickets to "Michael and Mary."

"Michael and Mary" was the play sponsored last February at the St. Louis Little Theatre by this commercial-minded group. Its purpose: to raise money for the book which you are now holding in your hands.

Besides extorting money from starving students, representatives attended the Associated Collegiate Press Convention, held right here in St. Louis on our own stamping grounds, and became proficient in all the whys and wherefores of journalism.

To wind up a hard-working season they held their yearly Press Club feast, short in style, but tall in abundance.

Seated on floor: BETTY RAUPP, E. LUCAS, J. CUNNINGHAM, R. KISLING

Second row: L. CONNORS, M. J. QUIRK, J. HOULEHIN, M. R. WAHLERT, B. HIGGINS, E. HURLEY, A. BLOCK, K. BURKE, E. WRIGHT, G. PANDJIRIS

Back row: A. SANSONE, S. NACHTMANN, A. MENGES, P. DUGGAN, A. RYAN, R. WARD, M. V. RICHARD, A. MURPHY, L. FLYNT, BARBARA RAUPP



OFFICERS

LEE MAGUIRE	President
MARY RIEDEL	Vice-President
CATHERINE PENDERGAST	Secretary
ALICE L. SAWYERS	Treasurer



LEE MAGUIRE, CATHERINE PENDERGAST,
ALICE L. SAWYERS, MARY RIEDEL



First row: L. MAGUIRE, C. PENDERGAST, M. KULONGOWSKI, E. WISS, H. DE COURSEY, R. ROHMAN, E. NUMAINVILLE, BARBARA RAUPP, M. BOEVING, R. SCHINDLER, L. ASH, M. FASSERO
Second row: C. SPRINGMAN, A. SAWYERS, Y. CORNU, T. ALLEN, J. WILLARD, B. BURKE, M. SCOTT, B. REID, G. JOHNSTON, E. AUBUCHON, K. BURKE, D. CASEY
Third row: L. FLYNT, F. LYNCH, M. RIEDEL, A. COSTELLO, M. HALLINAN, BETTY RAUPP, M. WALKER, D. DANIELS, M. DOERING, R. DANIEL, M. HUFF, L. MARSALA, D. GRAF, J. RIZZIE, M. KLECAN, M. CHANDLER

Patriotic Menus Invigorate Boarders

"Flag salads," patriotic desserts, and colorful formals were the Resident Students' contribution to "the preservation of our country's morale." Their "V for Victory Dinner" fixed in them the urge to hack the axis, at least in spirit. Following a more pacific theme was their Christmas dinner, a commemoration of the Prince of Peace's feast. What could be more appropriate than this double appeal to God and patriotism?

Besides their many other activities, Resident Students managed to confiscate enough minute drops from the river of Time to inaugurate a Geology Club. Its purpose: to teach the girls how not to get their dates mixed.

An early fall buffet supper featured food, music, and that now extinct species known as men (supplied through the courtesy of Saint Louis U.). Spring found them communing with nature; in other words, they had a picnic.

Organ Echoes Work of Sigma Beta Mu

Whatever you do, don't leave anything of value, such as old stamps, music, and quarters, lying around in unprotected sites. For if you do, that enterprising group known as Sigma Beta Mu will pounce upon your treasure and confiscate it for the organ fund.

The Music Club has made its campaign a thing of importance in our college. They've salvaged and sold old magazines, stamps, and music. Prior to the holidays, a silver tea was successfully sponsored for the general public.

The guests' exclamations were ah, these cookies! and ah, that food! But the club's refrain was ah, that silver! And they had excellent reasons for their exultations.

Monthly meetings of the group are replete with a generous display of home talent. Frequently, importations from outside music circles are featured, such as ten-year-old Lorraine Hedtkamp, better described as "a second Deanna Durbin." We're expecting at least seven Paderewskis to emerge from the club!

First row: M. SANSONE, S. NACHTMANN, D. SACKBAUER, A. SANSONE, B. BURKE, L. ASH, M. RIEDEL, H. BINDER, M. V. KOHL
Second row: L. MAGUIRE, B. STURROCK, R. ROHMAN, A. CEJKA, M. A. CHANDLER, MRS. E. M. HARRINGTON, T. ALLEN



Standing: DOROTHY SACKBAUER, LORRAINE ASH, LEE MAGUIRE, TOOKIE ALLEN
Seated: MARY A. CHANDLER, MRS. E. M. HARRINGTON



OFFICERS

MRS. E. M. HARRINGTON	President
MARY A. CHANDLER	Vice-President
DOROTHY SACKBAUER	Secretary
TOOKIE ALLEN	Treasurer
LORRAINE ASH	Librarian



Seated in front: K. BURKE, R. IGOE, P. BURKE, M. R. WAHLERT, J. DUDDY, A. BLOCK
Back row: L. FLYNT, E. AUBUCHON, M. V. RICHARD, A. MURPHY, M. SANSONE, B. BOLL,
 L. MAGUIRE, M. E. BOGGIANO, J. M. SIMON



AUDREY MURPHY, MARIE SANSONE, BETTY BOLL

OFFICERS

MARIE SANSONE	. . .	<i>Prefect</i>
BETTY BOLL	. . .	<i>Vice-Prefect</i>
AUDREY MURPHY	. . .	<i>Secretary- Treasurer</i>

Sodality Spreads Spiritual Defense

The Sodality of Our Lady mapped out a spiritual campaign this year which could easily rival that of any military general. Their blitzkrieg was aimed to sweep to victory the following parties: personal devotion and exterior holiness.

They encouraged personal devotion by advocating attendance at daily mass and communion and by sponsoring a living rosary. Exterior holiness was boosted by a successful rosary and missal drive for the boys at camp. The Christmas holidays featured the collection of baskets and bundles for the poor and were set off with a riotous bang by a party for the students of St. Joseph's Colored High School. Incidentally, before the afternoon was over, the hostesses became guests.

The year was climaxed by a beautiful May Day, when Marie Sansone, our Prefect, crowned the true Lady of Peace.

Student Body Sells Stamps for Defense

In the midst of all their other activities, the Student Council has found time to be patriotic by selling defense stamps. The members of this organization labor under the double burden of preserving the authority of the faculty and guarding the privileges of the student body.

One of the most important activities sponsored by the Student Council is College Day. The celebration is held on October 15, in honor of St. Teresa of Avila. On this day the freshmen are invested in their caps and gowns by the officers of the Student Association.

Last fall the second annual Father-Daughter Banquet, under the auspices of the Student Council, was highlighted by the appearance of two outstanding speakers, Monsignor Leo J. Steck, and Mr. G. C. Varnum.

OFFICERS

ALEEN BLOCK	President
ROSEMARY WARD	Vice-President
MARY R. WAHLERT	Secretary
JANE DUDDY	Treasurer



MARY R. WAHLERT, ALEEN BLOCK,
ROSEMARY WARD, JANE DUDDY

B. BURKE, C. PENDERGAST, B. BOLL, J. DUDDY, R. WARD, A. BLOCK, M. R. WAHLERT,
M. SANSONE, L. MAGUIRE, M. MEYER, B. RAUPP





First row: R. SMITH, L. O'CONNELL, M. K. MUELLER, H. SABADELL
 Second row: R. DANIEL, D. CASEY, J. BROE, A. DiSTEFANO, J. HENSCHKE, K. CARROLL,
 R. WALSH, E. WRIGHT

Spanish Club Clasps Hands of Pan- American Friends

The gayest club in town, amigas mias, is Las Teresianas, our yearling Spanish Club. For a minimum cover charge (good for every meeting of the year) you can become a skilled master of the South American Arts, including everything from "si si—ing the good neighbor way" to ordering a blue plate special at the Argentinian Thompson's.

Aiming to further Spanish interests among the Fontbonne students, their activities include primarily a fuller knowledge of the customs and culture of our Southern neighbors, a different country being selected for discussion at each gathering. No, that strange jumble of jargon you've been hearing lately isn't the vacuum cleaner on a rampage; just a few of the more zealous members practicing their translations of today's "hit parade."



HENRIETTA SABADELL, KATHLEEN CARROLL,
 EDWINA WRIGHT

OFFICERS

HENRIETTA SABADELL	President
KATHLEEN CARROLL	Secretary- Treasurer
EDWINA WRIGHT	Chairman of Committees

OFFICERS

VITA VIVIANO
President

MADELINE DAWKINS
Vice-President

ANGELA HANNAGAN
Corresponding Secretary

ANN O'CONNELL
Recording Secretary

CECILIA REICHERT
Treasurer



ANGELA HANNAGAN, MADELINE DAWKINS, VITA VIVIANO,
ANN O'CONNELL, CECILIA REICHERT

Alumnae Fills Calendar with Events

The Alumnae has managed to crowd innumerable activities into the short space of a year. Contact between the Georgia and St. Louis chapters is fostered by personal reports of the Southern group's activities. Representatives attended the I. F. C. A. Convention held in October and the following month covered themselves with glory in a table setting contest, winning the second prize by popular vote.

Combining pleasure with work and having fun out of both, they sponsored in rapid suc-

cession a baby party, a card party and fashion show for the benefit of the scholarship fund, a series of lectures on child psychology, and a gym class, which, incidentally, was the hardest work of all.

In May the senior class was formally received into the alumnae group at a communion mass and breakfast. At Baccalaureate the executive board climaxed a busy year by presenting a bachelor's hood to the outstanding senior.

OFFICERS

GEORGIA CHAPTER

ELIZABETH HUEY
President

VIRGINIA MACKEY
Vice-President

DOROTHY BAUMSTARK
Secretary-Treasurer

Page 75

First row: D. McMAHON, E. HUEY, V. MACKEY

Second row: D. BAUMSTARK, V. BEAUDRY, L. FLYNT, K. FLYNT, D. HARRISON



To complement class and club activities, the students shall exercise their obligations outside the classroom with the intention of developing values in harmony with the moral and social precepts of democratic living. Practice in peaceful relations with one another prepares the students for their role as members of the community. The sum-total of extracurricular activities shall serve to "develop and perfect the natural faculties by coordinating them with the supernatural," the objective being to produce "the true and finished woman of character."

To Promote THE

General



etal *Welfare*

September Draft

Dear Draftee:—

While your dreams of me are broken by the bugle, school bells clang for me again in the wee hours. Of course, September 15 was Freshman Orientation Week but we had as much fun as the green ones entertaining them. Bounced to us from a psychological exam we renovated them for the next test with everything from picnics without ants to garden parties and teas. I don't know what they thought about all this, but really, Draftee, this year's program surpassed all others in beginning to "lead us to Godward whatever befalls."

Well, we have Registration here too and we went on maneuvers to avoid conflicts, but I didn't mind taking several days to get settled. September 22 was the fatal day. I ran for class from the "dinky." Why don't you come drive us in your jumpy jeep?

Ah, you laughed when I sat down to write copy but when I got up the *Fontbonne* merited All Catholic Honors and "The Font" headlined First Honors. Aunt Ed. hereby promotes me to Reporter First Class.

Say, can you imagine being at a party where there are only civilians? It happened September 30 when St. Louis University made all the corporate colleges happy for the evening.



From top to bottom of panel:

Freshmen wander around campus during Orientation Week; Mary V. Kohl and Pete Wolf explain things to Sister Joseph Aloysius, while Jackie Overton and Liz Lucas learn about registration from Sister Susanne Marie; Clowns, civilians, and soldiers romp at the Penny Circus; Seer Audrey Murphy studies the cards in a circus tent; Another year of college opens with the campus resplendent in fall shades.

Catches Us

No, Draftee, we don't play all the time. October 3, everyone invoked the Spirit of Wisdom for the scholastic year at the Mass of the Holy Ghost.

October 15, of happy memory, was the traditional College Day and dress parade to Carondelet. And would you guess that a freshman, Gloria Sicking, won the prize for decorating her car with crepe paper and balloons to the approval of the judges? I wanted to award the Student Council a medal for giving me such a good time but it was K. P. for them. I don't have to tell you how I went for the lunch in the "caff!" Now that the freshmen have been invested in cap and gown the student body donned their robes to assemble in the chapel for recitation of the rosary.

Draftee, I wish you could have been at the Junior Skating Party to see me stand upon my own two little feet all evening. In less than a week the same class turned picture-minded with "Little Women" in twenty reels. But when something like a Proficiency Test rolled around, we just sat back and let the juniors go to it.

You would have enjoyed our Assembly on October 27 when the Rev. Martin C. D'Arcy, a philosopher from Campion College, Oxford, attacked prejudices. I was

From top to bottom of panel:

Rosemary Ward, President of F. A. A., crowns Mary Alice Guelker Queen of the Penny Circus; Rev. Martin J. D'Arcy makes Jane Duddy smile at a remark about college youth; "Twins" Pandjiris and Sackbauer rest at the pond between classes; Sophomores sing for their lunch on College Day; Clowns La Barge, Sappington, McNamara and A. Sansone cavort at Penny Circus; Betty Hughes, Gloria Johnston, and Leta M. Hummel lead freshmen to chapel on College Day.



Grads Pass in Re

open-minded on Hallowe'en when the F. A. A. drafted everybody for the Penny Circus where I had enough cents for the evening's fun. Mary Alice Guelker was Popularity Queen!

Believe me, Draftee, I'm saving my pennies from now on so I can send you something special to use at camp.

Penelope.

Dear Draftee:—

The last time I wrote I realized that the horizon before us was cloudy, but how could anyone have known that the storm would break so suddenly and so unexpectedly. Not even a few thunderbolts to warn us! The skies just opened and bombs poured down!

But you and I know, Draftee, that the American people are wise enough to know when to come in out of the rain, and since that first downpour they've become united in the national production of umbrellas, raincoats, and rubbers, so that in case of another shower, no matter how light, they will have ample protection. And that isn't all, Draftee. In a way, I think that such a sudden storm paid dividends, for as

From top to bottom of panel:

Helen De Coursey, Kank Pendergast, and Mary T. Klecan share Dad James M. Pendergast at Father-Daughter Banquet; Alumnae and students enjoy Homecoming dinner in cafeteria; A tense moment in the field hockey game with Harris Teachers' College; Friends of the Music Department gather at Organ Fund Silver Tea; Footlights Club listens to Prexy Jo Lorenz at initiation ceremonies; F. A. A. gathers for pre-game rally.

Review Nov. 8

I see it, everyone realized overnight that we are all in this together and that cooperation and self-sacrifice are the real weapons with which we will vanquish the forces of evil and attain the goal of peace. Maybe my log of activities will seem inconsequential now, but I think this is one way of keeping up morale.

I've been riding high ever since November 8, that long ago, when I dashed over to school for our annual Homecoming, renewed my friendships with alumnae members, and had a grand day. Incidentally, while I think of it, did the postman bring you that scapular I sent? We made several of those at the last meeting of the Social Peace Club.

Don't develop green eyes over this, Draftee, because I couldn't overlook our Sophomore party at Westborough Country Club, November 18. I was still pondering over Dr. Paul Steinbecker's remarks at assembly a few days before on the internal threats to our democracy, but I managed to enjoy dancing with my brother in spite of everything. Wish *you* were here, Draftee!

Sometime or other, we had a Thanksgiving vacation, but I wouldn't know about that, because I missed my turkey dinner for the Associated Collegiate Press Con-

Winter moonlight gilds the entrance to the Science Building.



Furlough Ends Act

vention at the Statler, November 20, 21, and 22. I returned to college with enough journalism pointers to stuff a turkey. No sooner was I back in routine than the Sodality Silver Tea overtook me on November 28, and on top of that I almost froze my toes at our big hockey rally before the Monticello game. We lost, 'tis true, but we had fun!

My mother often tells me that I was an adorable baby, but that isn't what the judges of the Junior Baby Photo Contest thought! When the results were announced at assembly on December 1, Joan Sanders, a freshman, was *the* beautiful baby. I felt better about the whole affair when the Music Department soothed my Monday blues with a lovely arrangement of the "Ave Maria."

Dad's day came December 2 when he proudly escorted me to the Father-Daughter banquet in the resident students' dining room. The Student Council sponsors this grand event every year, and I'm glad someone thought of a way of getting my father into a "tux!"

I wish you had been here to enjoy the "Seven Little Rebels" on December 6.



From top to bottom of panel:

Babies gurgle with glee at Alumnae Baby Party; Sodality K. Burke, A. Sansone, M. Sansone, M. R. Wahlert, and B. Higgins pack Christmas baskets; Students decorate tree for all-school party; Jane Duddy and Edwina Wright take leading parts in tableau; Glee Club voices blend in "The Messiah."

Ends *Activities for Nineteen Forty-One*

The Footlights Club has enough dramatic talent to start several stock companies. Laughter turned to sorrow that fateful day, December 7, with the treacherous attack on Pearl Harbor. While we were still trying to recover from that shock, the Glee Club presented the "Messiah" with its theme of peace and hope.

Christmas Day is almost here, and for the past weeks I've been proving that charity begins at home, what with the Silver Tea for the Organ Fund, the Sodality party for St. Joseph's High School, and the all-school Christmas entertainment. This may sound like a gay parade to you, but I think we have our job to do on the home front. We're doing our share of work, knitting, buying defense bonds and stamps, but we have to keep the home fires burning. I hope the sweater fits. I took time off from my Red Cross knitting to complete that work of art, so I have my fingers crossed for your sartorial perfection! A happy Christmas, my dear, and I'll write soon, I promise!

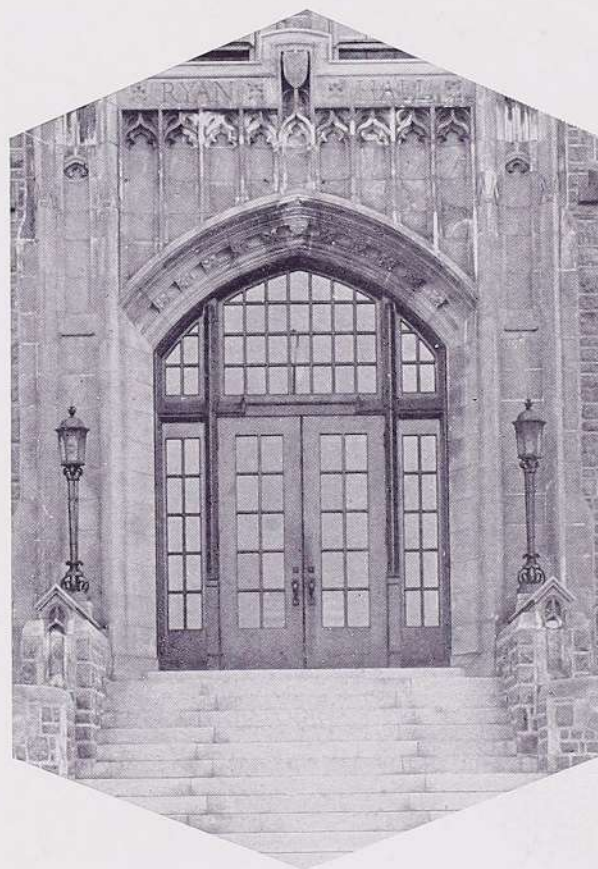
I'm sorry about your furlough, too, but it's all for Uncle Sam.

Penelope.

Dear Draftee:--

We're off again, so climb aboard my train of recollection and we'll do over again all the exciting happenings since my last letter. I'll guarantee that we won't miss a stop, if you'll guarantee the same when you write the letter I'm waiting to receive.

It's January 6 as we pull out of Holiday Station where I've been stopping since December 22, a long and enjoyable vacation save for the



The Gothic entrance to Ryan Hall invites all students to pass through these portals to the chapel.

Juniors Stage

disappointment of not seeing you, and the setbacks in the Pacific. However, I'm glad you enjoyed your Christmas Masses at the camp. As I return to school, I have so many new resolutions: to apply myself earnestly to my studies; to do my work to the best of my ability; to pray daily for peace. Won't you come with me as I recount the week-by-week happenings around the campus?

I had an opportunity to practice my resolutions January 12 at the assembly when I listened intently to Monsignor Code's lecture on the Vatican as a world force. Then I learned something about the realities of war as I heard Rudolph Haybrook of London's fire squad relate the horrors of air raids over England.

Examinations found me calm and prepared, for a change. Our annual retreat was a fitting conclusion for the first semester, and I welcomed the opportunity of cultivating God as the Friend of friends. I prayed for peace, victory, and you.

February's big event was the Formal Dinner at the M. A. A. on February 2. My cousin Johnny substituted for you that night as the seniors were entertained by the juniors. We sacrificed the souvenirs and some of the other ornaments of this annual event.



From top to bottom of panel:

Fire Chief Edwin Morgan of St. Louis and Rudolph Haybrook of London with Pat Sweeney; Professor Storm, naturalist; Freshmen frolic in the snow; Boarders' "V" for Victory table; Aleen Block and Marie Sansone place Fontbonne's dimes on the Mile-o-Dimes; Faculty and alumnae members attend Fontbonne Educational Conference at Jefferson.

Dress Parade

The yearbook staff worked hard to make the presentation of "Michael and Mary" a success at the St. Louis Little Theatre, February 12. It was quite a change to turn from that evening to our next event, the contemplation of the experiences of a pack rat in this modern world. Bishop Kelley's talk on that subject was inspiring.

Before Lent began, I had an opportunity to don costume and mask for the Sophomore Mardi Gras Party at the Forest Park Hotel, on Shrove Tuesday. Now I'm going to Mass every morning, so I must go to bed early. Until our next trip, keep all the banners flying!

Penelope.

Dear Draftee:—

With your pipe and the F. B. I. we could have solved the mystery of "The Speckled Band" which the Art Department concocted, via those adorable dancing puppets, March 2, at school. I was just thinking of making puppetry my vocation when Vocation Week arrived, bringing with it the Very Reverend Martin J. O'Malley's lecture on new points of view on one's life work.

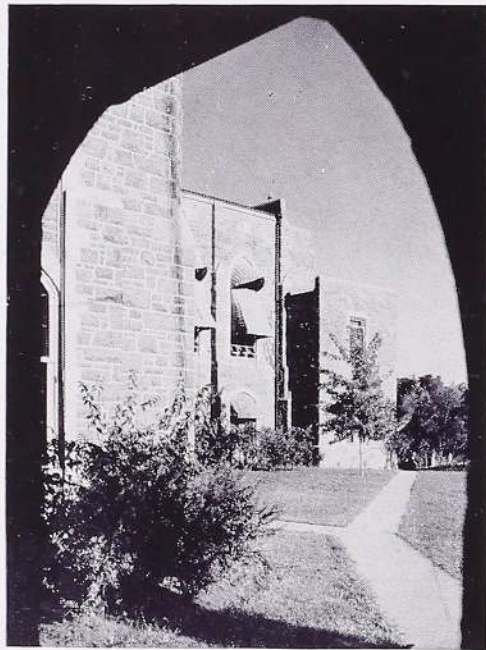
From top to bottom of panel:

Very Rev. Harry B. Crimmins, S. J., greets Bishop Francis C. Kelley before lecture; Mr. and Mrs. T. J. Ward, Mr. and Mrs. C. D. Murphy beam their approval of "Michael and Mary"; Juniors entertain seniors at the M. A. A.; Rosemary Woelfle and friend arrive at St. Louis Little Theatre, Feb. 12; Basketball beauties E. Wiss, R. Ward, M. A. Guelker, R. Igoe, K. Hernan, A. M. Hebberger, eye the basket.



Basketeers Blitzkrieg Path to Victory

Knowing how much you like good music, except for reveille, I'm sure you would have enjoyed Marie Sansone's music recital, March 12. The audience couldn't get enough of Tschaikovsky! I'm going to start dusting off my old piano, so clear the decks!



The Chapel as seen from the west arcade

We're becoming increasingly war-conscious with the passing of the days. You should see the needles fly as the girls knit for our armed forces! Blue-uniformed Red Cross volunteer

workers march across the campus en route to classes in canteen management. They're using our home economics laboratories. On March 16 we began to realize that there is an imminent possibility of an air raid in this area when Miss Gertrude Horgan, our director of publications, began her lectures on the organization of Civilian Defense and blackout precautions for the St. Louis district. I'm volunteering for OCD work, Draftee!

We turned to scholarship and honor societies on March 23 when Mrs. Katherine Eigel explained the qualifications needed for membership in Kappa Gamma Pi, national Catholic honor group. For your benefit, it isn't related to K. P.!

Basketball has been on our minds for the past few weeks with the intramural games. The juniors won the Fathers' Club trophy when they defeated the sophomores, 19-6. Another kind of a tournament made us laugh for hours when we crowded into the Little Theatre for Rosemary Ward's Minstrel Show, March 26. A sho' nuf blackout that was, at least for the cast! Back to basketball we went for the final game of the series, March 28, with Monticello. That victory gave the team a record of six wins, three losses.

Easter vacation was a welcome period for most of us, but the seniors spent all their time

Riders Invade Show

studying for comprehensives and polishing up their theses. I polished up my Easter bonnet for Mario Salvador's recital on the new auditorium organ, April 9. A few days later, April 14, the auditorium echoed with laughter when Jo Lorenz cooperated with Shakespeare in her senior dramatic recital, *Taming of the Shrew*.

After practicing for several weeks, I finally made my debut in the Spring Horse Show, April 17 and 18. Patriotic drills brought cheers from the audience, and although I didn't win a ribbon, it was fun!

On April 22, the Footlights Club depicted an emotional war in a grand production of *Jane Eyre* with Jeanne Cunningham in the title role. I know that plays bore you, but I'll give you odds that you would have liked this one. Then we all went native when Mr. Monaghan, Spanish instructor, brought out some grand technicolor films of Mexico to make us "oh" and "ah." And you would have enjoyed Ruth (Stunt) McNamara's thesis in physical education with all the stunts, tumbling, games, and dances you could possibly imagine. Even your setting-up exercises seem tame!

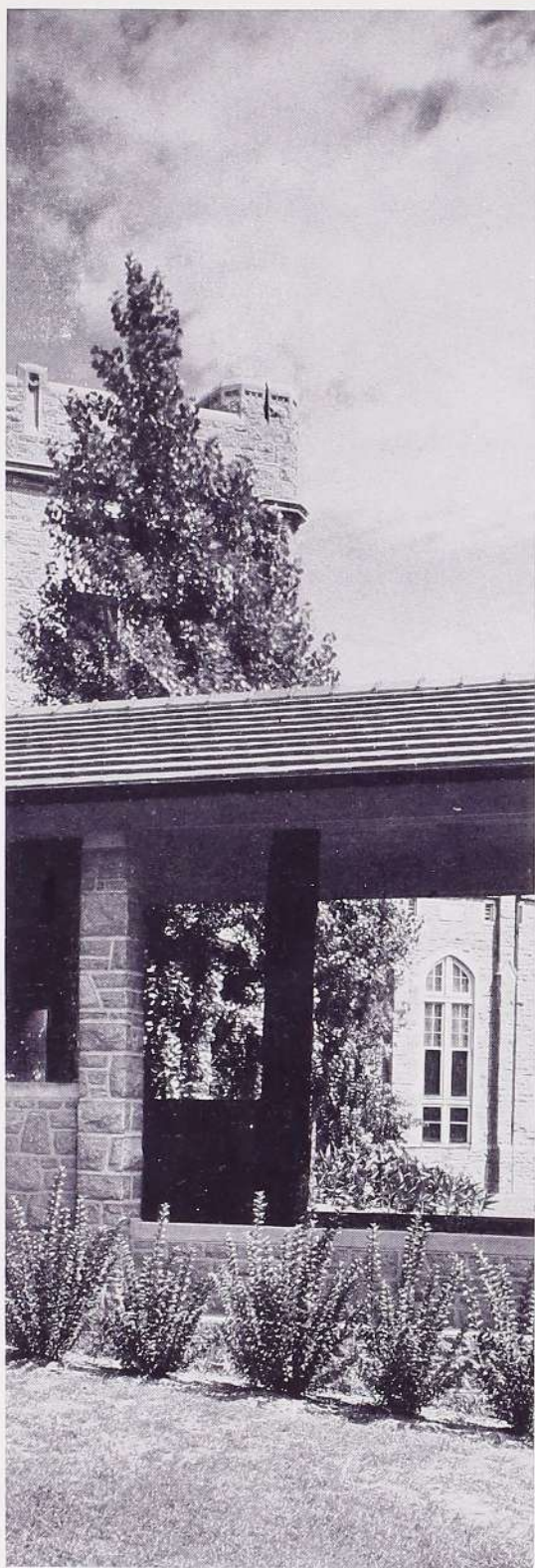
Sugar rationing cards are the thing now; no more sweets for poor you!

Penelope.

From top to bottom of panel:

Red Cross knitters F. Morse, L. McCarthy, H. Macauley, L. O'Connell, J. Casey do their bit; Rev. Martin J. O'Malley chats with Marie Sansone; Sherlock Holmes and Dr. Watson as puppet sleuths; Freshmen and sophomores entertain high school students at tea; Who's Who nominees harmonize with M. Sansone and M. Riedel at the piano—standing, from left, A. Block, B. Raupp, O. Baer, E. Numainville, R. Ward, M. R. Wahlert, A. Murphy, and A. Allen.





Little Theatre walls reach upward to fleecy clouds

Commencement Sounds

Dear Draftee:—

Have you heard the latest? It won't be long 'til I'm in there with you, because according to the talk going on in Washington, a woman's army will be formed for non-combatant service. Howdy, Pardner!

Regimentation or sugarless days, what is so rare as a day in May? Do you remember when all the world was young and you brought a May basket to me? May Day this year was a peaceful interlude in a war-torn world. Our court of love and beauty was a beautiful sight with Marie Sansone, Prefect of the Sodality, as queen, attended by the maids chosen from each class. She was crowned by Aleen Block, President of the Student Association, and the May Queen in turn crowned the statue of the Blessed Virgin in the chapel.

That up-and-coming freshman class was in the lime-light again with music and laughter at a Spring Party which they sponsored in the evening after the activities of May Day. Don't worry, Draftee; this time it was Cousin Edgar who did the honors. He's home on furlough from Pensacola. More music on May 6 when Lee Maguire demonstrated her skill at the piano in a senior music recital. Eddy Duchin and Arturo Rubinstein had better look to their laurels from now on!

You're quite a high-jumper, I know, so you would have enjoyed our Field Day, May 9. Pat Burke directed all the events for her thesis in physical education. I'm not going to try shot-putting until I have more practice. And, speaking of practice, the Glee Club proved that's what makes their harmony so perfect when they brought down the house at the Spring Recital, May 11. We're all singing a song of victory now; let's keep that music in our hearts forever.

Taps for '42

Ascension Thursday, May 14, gave me a chance to relax in the sun at the all-school picnic. The night before I was in the plunge with the other mermaids at the Physical Education Department's Aquacade. Events came thick and fast for the next few weeks with the Alumnae Communion Breakfast for the seniors, May 17, and the other entertainments.

Class Day, May 25, was a day of memories with class prophecies, the class will, and impending note of sadness at the thought of leaving Alma Mater. That night we listened entranced to Alice Lee Sawyer's interpretation of *Wuthering Heights* in her senior dramatic recital. Then I had to study for exams, of course!

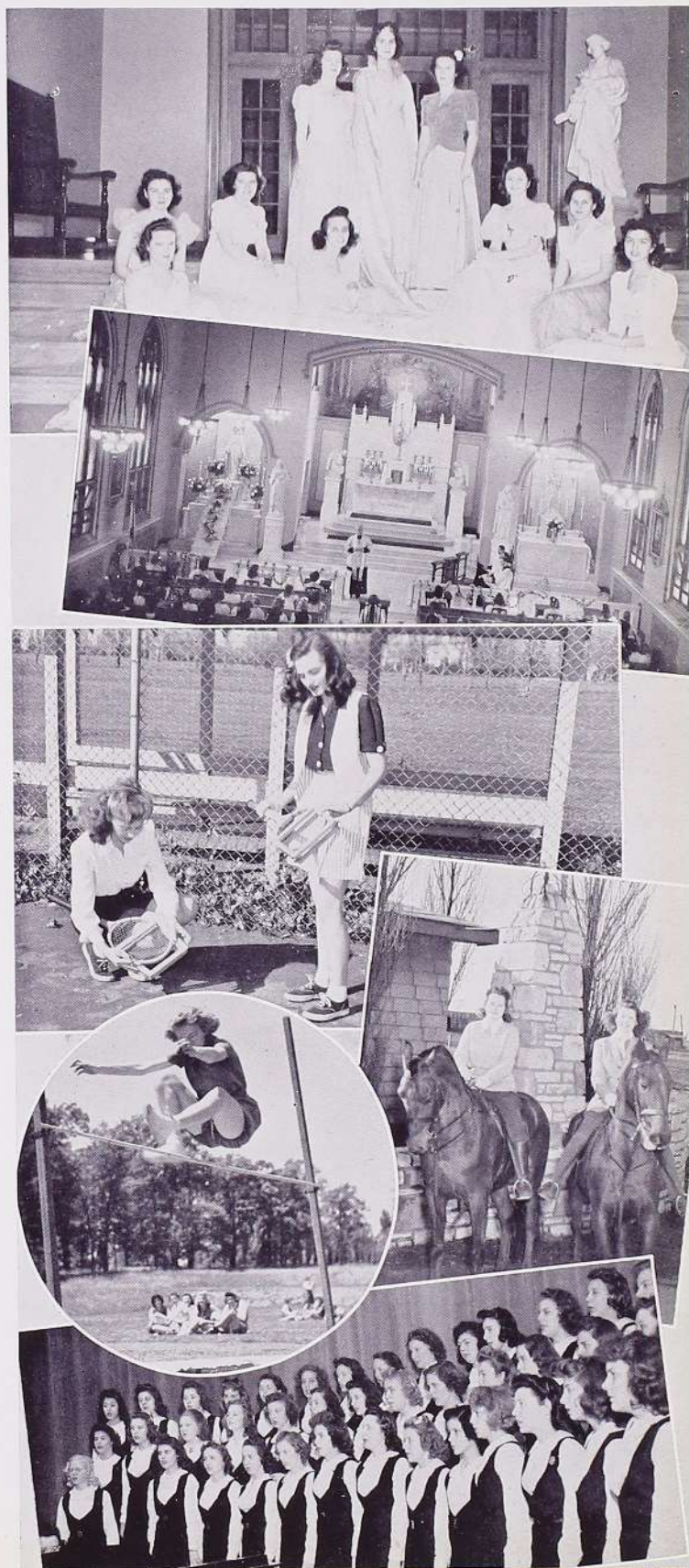
Baccalaureate ceremonies on May 31 impressed us more than ever, for our first graduates in America's second World War face tremendous problems. Another ivy planted, another class to add to Fontbonne's heritage; it may sound sentimental to you, but I wouldn't change this for the world.

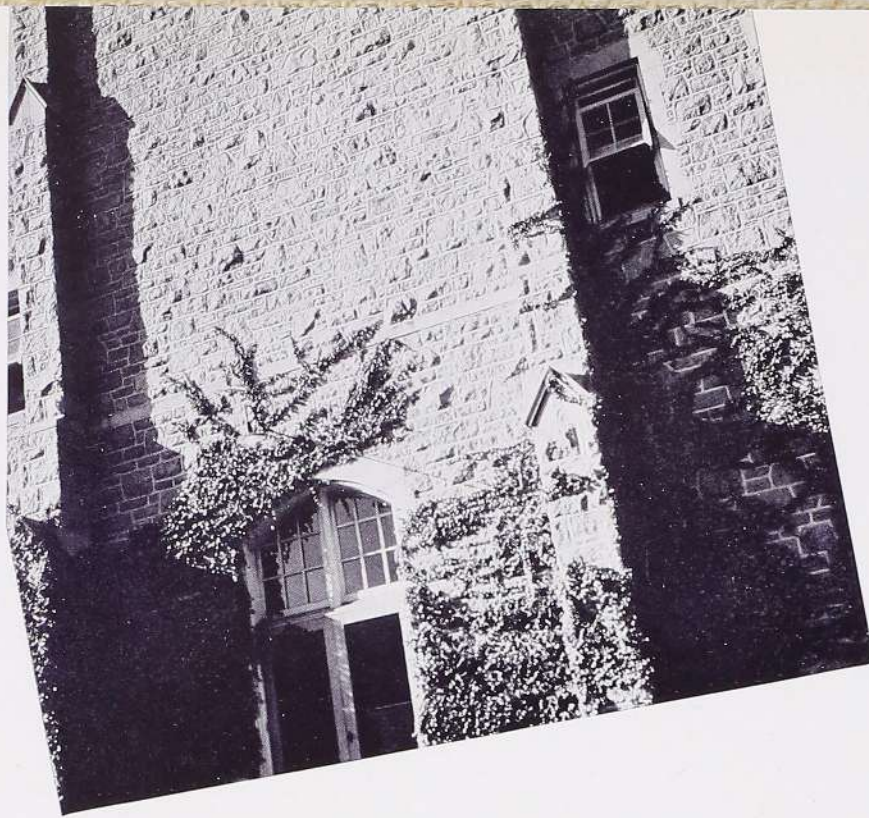
June 3 we sounded taps for the class of '42 amid the traditional splendor of Commencement. Taps are sounding for me too, reveille for you!

Penelope.

From top to bottom of panel:

Marie Sansone, May Queen, surrounded by her attendants from four classes; May Day ceremonies in the Chapel; Time for tennis with Gloria Sicking and Marilyn Sappington; Jean Houlehin and Jimmie Menges stage beauty parade with horses at Spring Show; Louise La Barge high-jumps bar at Field Day; Ursuline Academy participates in Choral Festival.





Vine-Framed Entrance to Dining Hall

Phi Beta Chi Awards

GLORIA JOHNSTON '45, *Chemistry*

ANNE MARIE HEBBERGER '45, *Biology*

Athletic Association Award

TO FONTBONNE'S OUTSTANDING ATHLETE

ROSEMARY WARD

Who's Who

ADELAIDE ALLEN

OLIVE BAER

ALEEN BLOCK

AUDREY MURPHY

EVELYN NUMAINVILLE

BARBARA RAUPP

MARY RIEDEL

MARIE SANSONE

MARY R. WAHLERT

ROSEMARY WARD

Staff Recognitions

Features

Associates

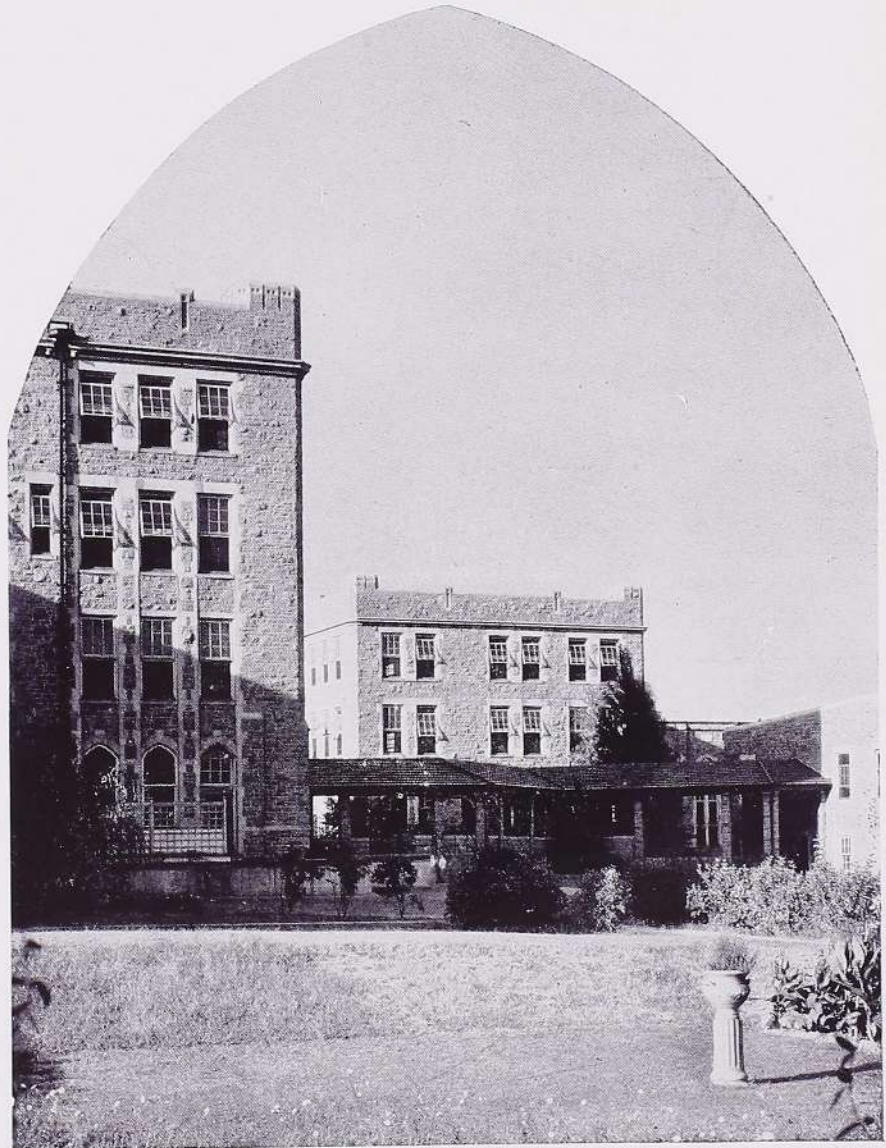
KATHLEEN BURKE
JEAN HOULEHIN
LORAIN FLYNT
BARBARA RAUPP
EDWINA WRIGHT

Assistants

LAVERNE CONNORS
PAT DUGGAN
RITA PERKINSON
BETTY RAUPP
BETTY REID
ALICE RYAN
ALICE L. SAWYERS
MARY R. WAHLERT

Business

EVELYN AUBUCHON
PAT BURKE
JEANNE CUNNINGHAM
ROSEJOAN KISLING
MARY V. KOHL
ELIZABETH LUCAS
MARY MCCABE
RUTH MCNAMARA
AGNES MENGES
DOROTHY SACKBAUER
ROSEMARY WALSH



The East Arcade as Seen from the Sunken Garden

We Dip Our Banners In

We wish to acknowledge all those who have assisted in the production of *The Fontbonne* of 1942.

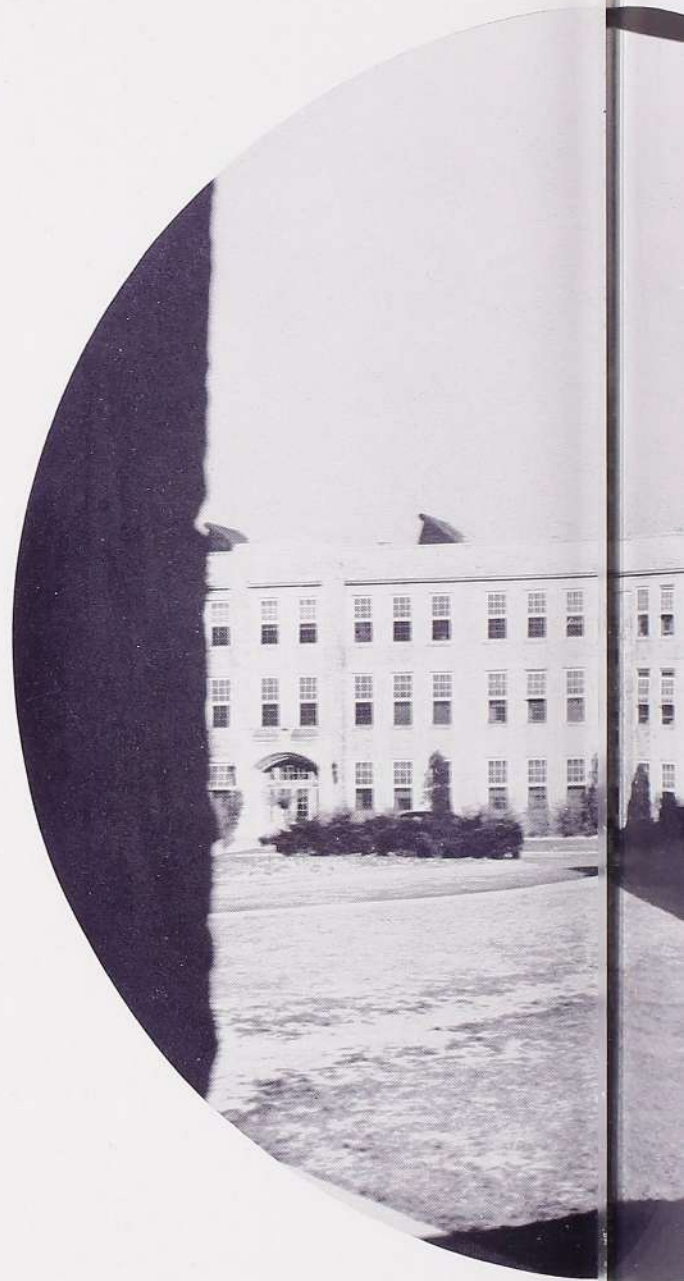
FRED BASSMAN
Mid-State Printing Co.

EDWIN HOFFSTETTER
Edwyn Studios

PAUL PIAGET
Piaget Studios

VICTOR STEVENSON
Photographer

HARRY J. SWAIN, JR.
Central Engraving

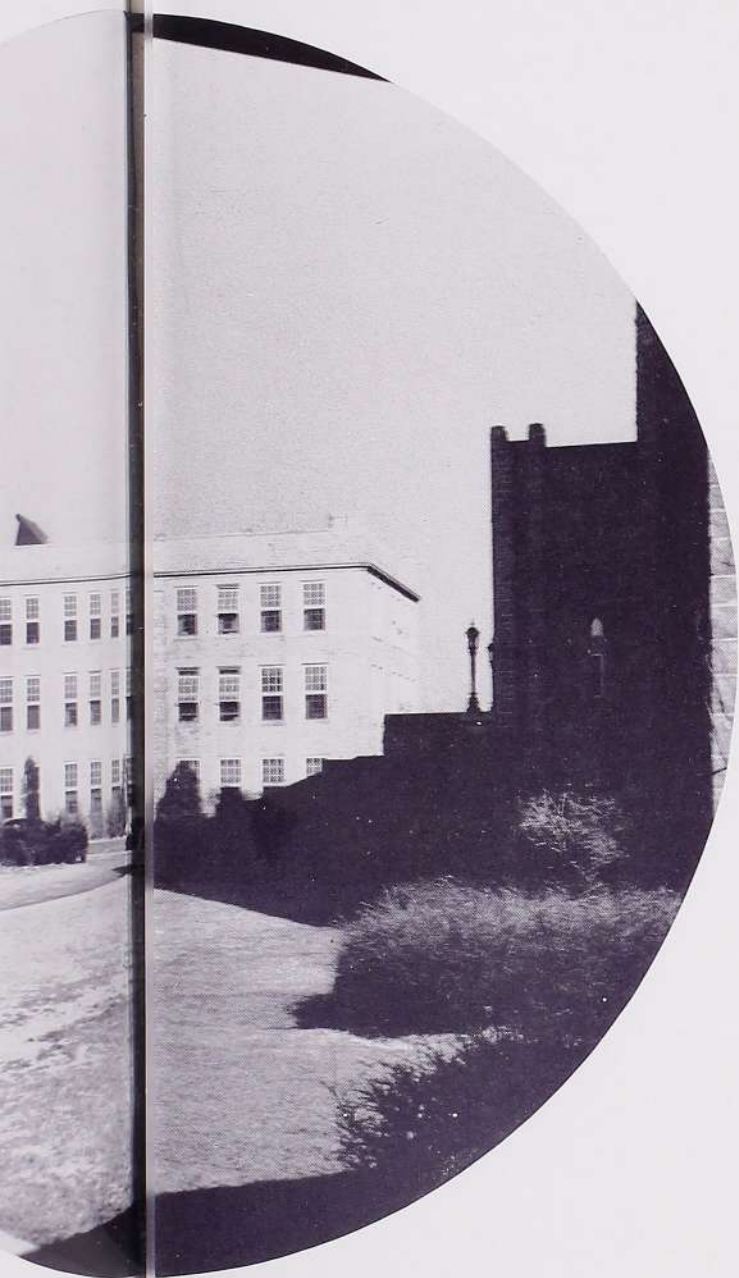


Sunlight and Shadows

Banners

In Appreciation

Our advertisers and friends have aided in making this book a financial success. To them we express our deepest gratitude.



THE QUARTERMASTER'S CORPS SELECTS

SPONSORS

Dr. A. E. Block

Mayor & Mrs. Matt C. Fogerty

Fontbonne Alumnae Association

Fontbonne Fathers Club

Fontbonne Mothers Club

Miss Virginia L. Fuehlen

Miss Angela Hannagan

Miss Gertrude M. Horgan

Mrs. & Mrs. A. J. Noble

Mrs. John E. Riley

Mr. & Mrs. T. J. Ward, Jr.

Mr. & Mrs. W. E. Wahlert

Patrons

Miss Helen Marie Badaracco

Miss Mary Bass

Dr. & Mrs. Wm. Bauer

Miss Aleen Block

Miss Henrietta Binder

Mr. & Mrs. E. P. Burke

Mr. & Mrs. N. Burke

Miss Patricia Burke

Miss Dorothy Bussmann

Mrs. Rose Cavagnara

Mr. & Mrs. C. L. Cunningham

Miss Helen DeCoursey

Mrs. L. A. Duggan

Miss Patricia Duggan

Mrs. John Faust

Miss Faith Fricke

Miss Betty Higgins

Mr. & Mrs. A. L. Houlehin

Mr. & Mrs. J. D. Hummel

Mr. & Mrs. D. C. Hurley

Mr. & Mrs. J. J. Igoe

Jeanne & Lizzie

Mr. & Mrs. J. W. Kisling

Miss Mary Teresa Klecan

Miss Bettie Knetzger

Mr. & Mrs. L. G. Kohl

Mr. & Mrs. Jerome Kriegshauser

Dr. H. H. Kramolowsky

Lt. Comdr. & Mrs. C. L. LaBarge

Miss Doris Lamping

Mr. & Mrs. P. M. Lorenz

Mr. & Mrs. L. A. Mapel

Mr. & Mrs. J. J. McNamara

Mr. & Mrs. A. C. Meyer

Mrs. W. J. Miller

Mr. & Mrs. H. J. Mosberger

Miss Belle Marie Mullins

Mr. & Mrs. C. D. Murphy

Nettie Flower Shop

Mr. & Mrs. J. A. Naumann

Miss Evelyn Marie Numainville

Miss Lucille O'Connell

Miss Gloria Pandjiris

Mr. & Mrs. T. R. Pascal

Miss Kank Pendergast

Pete & Pee Wee

Miss Mary Riedel

Mr. & Mrs. E. Ryan

Miss Hank Sabadell

Mr. & Mrs. J. A. Sicking

Miss Jane Marie Simon

Mr. & Mrs. W. N. Simon

Mrs. James W. Singer

Miss Mary Elizabeth Tracy

Miss Rosemary Ward

Mrs. Frank O. Watts, Jr.

Miss Dorothea Wells

Miss Gwynette C. Willis

Max Zucker Flower Shop



Fontbonne College . . .

- A Catholic Institution conducted by the Sisters of St. Joseph of Carondelet for the higher education of women.
- A Corporate College of St. Louis University and as such fully accredited by the North Central Association of Colleges and Secondary Schools, by the Association of American Colleges, and by the National Catholic Educational Association.
- A degree-granting institution empowered to grant the degrees of A.B., B.S., and B.S. in Home Economics.

. RESIDENT AND DAY STUDENTS

Address the Registrar

FONTBONNE COLLEGE

WYDOWN AND BIG BEND BLVDS.

• ST. LOUIS, MISSOURI

ST. JOSEPH'S ACADEMY FONTBONNE

• *A Catholic High School for Girls* •



Affiliated with the National Catholic Educational Association; accredited by the University of Missouri and the North Central Association of Colleges and Secondary Schools, and officially approved by the State Board of Education of Missouri as a Four-Year Senior High School, Class A.

Conducted by the

SISTERS OF ST. JOSEPH OF CARONDELET

WYDOWN AND BIG BEND BOULEVARD
ST. LOUIS, MISSOURI

Y
.
T

Compliments
of
SENIOR CLASS
JUNIOR CLASS
SOPHOMORE CLASS
FRESHMAN CLASS

THE PRIDE OF FONTBONNE COLLEGE
AND ST. LOUISANS

JOE GARAVELLI RESTAURANT

The Rendezvous of Fontbonne Girls

DeBALIVIERE AND DeGIVERVILLE

FOREST 1166

Another

BOOK BY CENTRAL

CENTRAL ENGRAVING COMPANY

114 N. SEVENTH Street

ST. LOUIS, MISSOURI

Glad to have met you, Fontbonne!

It's been a real pleasure to work with
Miss Horgan, Aleen, Rosemary and the
others on so fine and interesting a yearbook
as the 1942 Fontbonne.

MID-STATE PRINTING COMPANY

JEFFERSON CITY, MISSOURI



This Is the Place We Ride Our Horses

Agnes Menges, Mary Tracy, Dorothy Rinderer and
Betty LaBarge on mounts from

MISSOURI RIDING STABLES, INC.

Horses Rented, Boarded, and Trained

Riding Instructions by Competent Masters

A. L. PENDLETON, President

Compliments
of
A FRIEND

Best Wishes

from

**PEACOCK
SHOE SHOP**

815 LOCUST STREET

**50
YEARS OF SERVICE**

SECRETARIAL
STENOGRAPHIC
ACCOUNTING

and

TYPEWRITING COURSES

3 Schools
in
Saint Louis

Day and
Evening
Classes

RUBICAM SCHOOL



THE PARKMOOR

ALL-CREAM ICE CREAM

Delicious SANDWICHES

With Best Wishes

of the

W. F. B. Co.

Kaletta Statuary Co.

Liturgically Correct Church Statuary

Altars . . . Church Furniture . . . Pews

Choir Halls . . . Draperies

Church Metal Ware . . . Furnishings

3715-21 California Avenue
ST. LOUIS, MO.

Give Your Eyes

the special care this priceless
possession deserves

•

An authoritative booklet on the Care
of Eyes will be sent upon request.

•

. *we served your grandparents*

Erker's

610 Olive

518 N. Grand

GUILD OPTICIANS

BADER'S

*The House
of Quality*

Art Supplies

1112 Locust St. Louis, Mo.

Compliments

of

HAWTHORN COAL COMPANY

608 Arcade Bldg. MAIN 3050, 3051

DACEY & COMPANY INC.

Wholesale Distributors
FRESH FRUITS and VEGETABLES
HORSERADISH ROOTS

Serving

1	Clubs	1
8	Hotels	9
5	Institutions	4
2	Restaurants	2
	Retail Grocers	

1203-1211 N. BROADWAY
CE. 7125-7126

"90 Years of Service in St. Louis."

Sanitone

by

CHAPMAN

A REAL BEAUTY
TREATMENT FOR
GARMENTS



FLOWERS

A Distinctive Gift

THE HILLCREST FLORAL SHOP

704 De Mun

CLAYTON

Parkview 7311

STEINWAY

CHICKERING • GEORGE STECK
STORY & CLARK and MUSETTE

PIANOS

Hammond Organ Hammond Solovox

*Largest selection of Victor Records and
Masterpiece Albums in the Middle West*

Aeolian Company of Missouri

W. P. CHRISLER, President
1004 Olive Street

Edwyn

Presents

FONTBONNE'S MOST ATTRACTIVE GRADUATE OF '42



JANE DUDDY

Distinctive Portraits for The Fontbonne

by

EDWYN

38 NORTH EUCLID

SAINT LOUIS

ROSEDALE 4575

Compliments of the

**ADJUSTABLE
SHOE CO.**



20-24 MEZZANINE
ARCADE BUILDING

L. G. BALFOUR CO.

*Nationally Known
Fraternity and
Sorority Jewelry*

- CLASS RINGS
- INVITATIONS
- DIPLOMAS
- MEDALS
- TROPHIES
- ATHLETIC AWARDS

*Your "Balfour" Man
Formal Banquet Souvenirs*

FRANK A. DOOLING
CENTRAL 1544



210 Board of Education Building
911 Locust St.

CountrySide Florist



9800 MANCHESTER
REPUBLIC 1300

**LIBERTY BELL
OIL COMPANY**

FUEL OILS FOR
INDUSTRIAL AND
HOME BURNERS

Authorized Factory Distributors of
CENTURY AND ELECTROL
Domestic Oil Burners, Hot Air,
Water and Steam Units

JOHNSON Commercial and Industrial Burn-
ers, Gasoline, Lubricating Oils,
Greases, Etc.

1430-40 S. Vandeventer Ave. NEWstead 1200

McCaughen & Burr

FINE ARTS
Established 1860

1107 LOCUST ST.
CENTRAL 1625 St. Louis, Mo.

Mary V. Kohl, Rosemary Holden,
Rosejoan Kisling, and Pete Wolf
pause for refreshments at

THE CANDLELIGHT HOUSE

Famed for its cuisine and picturesque sur-
roundings, invariably for after the show
snacks, luncheon, and dinner the Fontbonne
girls choose



The CANDLELIGHT HOUSE

7800 CLAYTON ROAD

VICTOR STEVENSON

Photographer

Specializing in

INFORMAL PICTURES OF
WEDDINGS *and* PARTIES

CHESTNUT 9048

DELMAR 0494

KERTH MOTOR CO.

SALES
AND
SERVICE

34 North Meramec

PARKVIEW 8277

MISS HICKEY'S

TRAINING SCHOOL *for*
SECRETARIES

Day and
Evening
Classes

CAbany 6877

560 N. Skinker

AFTER THE DANCE

Stop at

THE CLUB V.

6600 Delmar

CAbany 9998

**QUALITY DAIRY
COMPANY, INC.**

4630 West Florissant Ave.



"None Better"

P r o d u c t s



GOodfellow 6000

GOodfellow 6001

*Ask Your
Grocer*

for

**PRINCESS
CRACKERS**

Please!

**JOHN H. McCARTHY
MONUMENT CO.**



4642 West Florissant Ave.

GOODFELLOW 0580

Compliments

of

Bussmann

Manufacturing

Company

SPECIAL ORDER WORK
CH. 0090

MONTI JEWELRY COMPANY

School Rings
Pins
Medals

531 Arcade Bldg. St. Louis, Mo.



Jane Duddy, '42,
takes time off between classes
to enjoy a refreshing drink of

DOUBLE COLA

Bottled by the
RITZ BOTTLING CO.

SOUTH SIDE ROOFING CO.

Roofing and Repairing
Promptly Attended to



4212-14 Gravois Ave.
St. Louis, Mo.

HENRY BINDER
FLanders 6010

Office Phone
HUDson 0230

KONCEN MEAT COMPANY

Compliments
of

JOHN S. NOOTER BOILER WORKS

1401 S. Second St.

Compliments
of
**SCHNEIDER
PRINTING
COMPANY**

1001 North Sixth Street
St. Louis

We Print "THE FONT!"

Town Hall for Lunch!



Rosemary Ward, Mary Rita Wahlert,
Evelyn Hurley, and Aleen Block study
a luncheon menu at their favorite
eating place

TOWN HALL
6736 Clayton Road

BOWLING ESQUIRE

The Aristocrat of Bowling Alleys
6720 CLAYTON ROAD

Home of both
ST. JOSEPH ACADEMY LEAGUE and
FONTBONNE COLLEGE LEAGUE

Open 24 hours daily
Air conditioned

**Sarachon Hooley
School**

of
**SECRETARIAL
TRAINING**

A progressive school offering
to a limited number of girls
a highly specialized, inten-
sive training for the better
type position.

5744 Cates Ave. PARKVIEW 7800

It's
**SUNFREZE
ICE CREAM**

•
JEfferson 2522
4424 West Papin
•

With
Best Wishes
from
A FRIEND

*Singer Sewing
Machine
Company*

823 Locust
ST. LOUIS, MISSOURI

Compliments
of
**MR. & MRS. HUGH LEE
SAWYERS**

Compliments
of
MELETIO SEA FOODS

For
**COOLING COMFORT
CIRCULAIR**

Successor to the Fan
Enjoy Summer Comfort
Call your appliance dealer

•
**KISCO COMPANY
INC.**

39th and Chouteau

Student Directory

1941-1942

A

ALLEN, Adelaide, New Madrid, Missouri
ASH, Lorraine Marie, 308 North Forest Street, Forest City, Arkansas
AUBUCHON, Margaret Evelyn, 7225 Zephyr Place, St. Louis, Missouri

B

BAER, Olive Louise, 1921 Virginia, St. Louis, Missouri
BALSER, Jacqueline, 144 St. George's Place, St. Louis, Missouri
BALSER, Jeannette, 144 St. George's Place, St. Louis, Missouri
BASS, Mary Ernestine, 731 Westwood Drive, Clayton, Missouri
BAUER, Anneliese, 7379 Pershing Avenue, University City, Missouri
BINDER, Henrietta Caroline, 5403 Lisette Avenue, St. Louis, Missouri
BLOCK, Aleen Barbara, 6820 Delmar Boulevard, St. Louis, Missouri
BOEVING, Marjorie Mae, 946 Vine Street, Poplar Bluff, Missouri
BOGGIANO, Mary Ellen, 5428 Maple Avenue, St. Louis, Missouri
BOLL, Mary Elizabeth, 2834 Bartold Avenue, Maplewood, Missouri
BRANDT, Joan Frances, 1128 Bellerive Boulevard, St. Louis, Missouri
BROE, Jacquelin Ann, 5023 Northland Avenue, St. Louis, Missouri
BURKE, Beatrice Ann, 1045 Oxford Road, Atlanta, Georgia
BURKE, Kathleen, 5246 Terry Avenue, St. Louis, Missouri
BUSSMANN, Theresa Mary, 1220 Hampton Drive, Richmond Heights, Missouri

C

CALLAHAN, Jane, 3926 Dover Place, St. Louis, Missouri
CALLIER, Catherine, 1324 LeRoy, St. Louis, Missouri
CARROLL, Kathleen, 4518 Lexington, St. Louis, Missouri
CASEY, Dorothy Ann, Potosi, Missouri
CASEY, Mary Jacqueline, 7225 Northmoor Drive, University City, Missouri
CASEY, Rosemary Frances, 3854 Labadie, St. Louis, Missouri
CATALDI, Mary, 4961 Columbia, St. Louis, Missouri
CHANDLER, Mary Alice, 1604 South Utica, Tulsa, Oklahoma
COLOMBO, Louise, 1052 Hampton Boulevard, St. Louis, Missouri
CONNORS, LaVerne Ann, 4726 Lexington, St. Louis, Missouri
CORNU, Yvonne, 1252 Cumberland Road, N. E., Atlanta, Georgia
COSTELLO, Agnes Marie, 4123 North Capitol Avenue, Indianapolis, Indiana
CRATTY, Patty Anne, 5236a Bancroft, St. Louis, Missouri
CUNNINGHAM, Jeanne Rosemary, 5928a Julian, St. Louis, Missouri

D

DANIEL, Rosemary, 2117 Walnut Street, Murphysboro, Illinois
DANIELS, Dorothy Jane, 247 Barton Avenue, Terre Haute, Indiana
DECOURSEY, Helen, 628 Ohio Avenue, Kansas City, Kansas
DI STEFANO, Anita Antionette, 1349 N. Kingshighway Boulevard, St. Louis, Missouri
DLUGON, Frances, 800 Division Avenue, East St. Louis, Illinois
DOERING, Mary, 7038 Melrose Avenue, St. Louis, Missouri
DONLEY, Patricia Evelyn, 2112 Linton Avenue, St. Louis, Missouri
DUDDY, Jane, 4866 Sacramento, St. Louis, Missouri
DUGGAN, Patricia Maria, 3841 Flora Place, St. Louis, Missouri

E

EBERT, Lorraine E., 3530a Humphrey, St. Louis, Missouri

F

FAGEN, Mary Ellen, 5956a Kingsbury, St. Louis, Missouri
FASSERO, Marguerite, Benld, Illinois
FLYNT, Lorraine, 1356 Lanier Boulevard, N. E., Atlanta, Georgia
FRANCIS, Geraldine B., 7352 Pershing, University City, Missouri
FRANCIS, Shirley Jane, 7352 Pershing, University City, Missouri
FRANK, Dorothy, 5651 Waterman, St. Louis, Missouri
FRICKE, Faith, 4096 Holly Hills Boulevard, St. Louis, Missouri

G

GASEN, Sara, 4510 Pine, St. Louis, Missouri
 GIBBONS, Mary Margaret, 5736 McPherson, St. Louis, Missouri
 GITTINS, Naomi Grace, 8020 Gannon, University City, Missouri
 GRAF, Dorothy, 639 West Lincoln, Freeport, Illinois
 GROSSE, Alvera, 159 South Gray Avenue, Webster Groves, Missouri
 GUELKER, Mary Alice, 2724 Greer Avenue, St. Louis, Missouri

H

HACKETT, Mary Patricia, 5089a North Kingshighway, St. Louis, Missouri
 HALLINAN, Mary Patricia, 545 Fifteenth Street, Augusta, Georgia
 HEBBERGER, Anne Marie, 956 Glenmoor Lane, Glendale, Missouri
 HEDERMAN, Cecilia, 5231 Maffitt Avenue, St. Louis, Missouri
 HENSCHKE, Alice Jeanette, 4942 Maffit Place, St. Louis, Missouri
 HERNAN, Katherine, 1130 Maple Place, St. Louis, Missouri
 HIGGINS, Betty, 345 Fairlawn Avenue, Webster Groves, Missouri
 HOLDEN, Rosemary Catherine, 5369 Patton Avenue, St. Louis, Missouri
 HOULEHIN, Jean Marie, 7259 Lindell, University City, Missouri
 HUFF, Mary Elizabeth, 425 E. North Street, DuQuoin, Illinois
 HUGHES, Betty Ann, 6560 Itaska Street, St. Louis, Missouri
 HUMMEL, Leta May, 6101a Lotus Avenue, St. Louis, Missouri
 HUMMEL, Marion Mosberger, 4537 N. Kingshighway, St. Louis, Missouri
 HURLEY, Evelyn, 7329 Lindell, University City, Missouri

I

IGOE, Rainalda, 2517 Mullanphy Street, St. Louis, Missouri

J

JOHNSTON, Gloria Mary, 1609 Bradford, St. Louis, Missouri
 JUNGGERMAN, Elsie W., 6150 Oakland Avenue, St. Louis, Missouri

K

KISLING, Rosejoan, 11 Deer Creek Woods, Clayton, Missouri
 KLECAN, Mary Teresa, 7329 Terrace, Kansas City, Missouri
 KNETZGER, Bettie, 930 Twining Place, Webster Groves, Missouri
 KOHL, Mary Virginia, 133 Dartford, Clayton, Missouri
 KRAMOLOWSKY, Mary, 6920 Cornell, University City, Missouri
 KULONGOWSKI, Margaret Mary, 3430 Minnesota, St. Louis, Missouri

L

LA BARGE, Louise Lauck, 7614 Forest View Drive, St. Louis, Missouri
 LAMPING, Doris Joann, 7207 Northmoor Drive, University City, Missouri
 LEAHY, Margaret, 4029 Flad Avenue, St. Louis, Missouri
 LORENZ, Josepha, 3 Layton Terrace, St. Louis, Missouri
 LUCAS, Elizabeth Ann, 5560 Pershing, St. Louis, Missouri
 LUCE, Clare Patricia, 6607 San Bonita Avenue, St. Louis, Missouri
 LYNCH, Frances Anne, 876 Boulevard, N. E., Atlanta, Georgia

M

McATEER, Marilyn Ann, 805 Market Avenue, East St. Louis, Illinois
 McCABE, Mary, 4344 Randall Place, St. Louis, Missouri
 McCARTHY, Lenore, 4602 W. Florissant, St. Louis, Missouri
 McKEON, Mary Claire, 5 Elm Place, Webster Groves, Missouri
 McNAMARA, Ruth Marie, 8343 Washington, St. Louis, Missouri
 MACAULEY, Helen, 5925a Page Avenue, St. Louis, Missouri
 MAGUIRE, Mary Alice, 121 West Locust, Canton, Illinois
 MAPEL, Ann Elizabeth, 5714 Michigan Avenue, St. Louis, Missouri
 MARSALA, Lee Frances, 108 S. Third Street, Martin's Ferry, Ohio
 MASTRO, Sylvia, 1431 Bellevue Avenue, Richmond Heights, Missouri
 MENGES, Agnes Marie, 4515 Lindell, St. Louis, Missouri
 MENGES, Mary Louise, 4515 Lindell, St. Louis, Missouri
 METZGER, Margaret Mary, 3664a Connecticut, St. Louis, Missouri
 MEYER, Mary Margaret, 6712 McCune, St. Louis, Missouri
 MEYER, Rosemary Jaclyn, 7720 St. Albans, St. Louis, Missouri
 MIERA, Rosalind Sylvia, 5514 Cabanne Avenue, St. Louis, Missouri
 MOONEY, Jeanne Patrice, 7537 Lovella Avenue, Richmond Heights, Missouri
 MORSE, Frances Loretta, 6 Hawthorne Court, Kirkwood, Missouri
 MUDD, Juanita June, Le Grand, Iowa
 MUELLER, Mary Jane, 1057 Veronica, St. Louis, Missouri
 MUELLER, Mary Kay, 709 South Skinker, St. Louis, Missouri
 MURPHY, Audrey, 5444 Queens, St. Louis, Missouri
 MURPHY, Rose Mary, 7117 Northmoor Drive, University City, Missouri

N

NACHTMANN, Suzanne Elizabeth, 655 Fairview Avenue, Webster Groves, Missouri
 NAUMANN, Audrey Jane, 3708 Oakmount Drive, Normandy, Missouri
 NOONAN, Grace Lucille, 4118 San Francisco, St. Louis, Missouri
 NUMAINVILLE, Evelyn Marie, 437 South Border, Hot Springs, Arkansas

O

OBERMUELLER, Rosemary, 1106 Bissell Street, St. Louis, Missouri
 O'CONNELL, Lucille, 7277 Roland Boulevard, St. Louis, Missouri
 O'MEARA, Peggy Anne, 4021 N. Taylor, St. Louis, Missouri
 O'REILLY, Mary Eileen, 3940 Lafayette Avenue, St. Louis, Missouri
 OVERTON, Jacqueline, 7256 Princeton, University City, Missouri

P

PANDJIRIS, Rosemary Gloria, 9100 Clayton Road, Clayton, Missouri
 PASCAL, Yvonne, 5818 Walsh Street, St. Louis, Missouri
 PENDERGAST, Catherine, 824 W. 52 Terrace, Kansas City, Missouri
 PERKINSON, Rita Katherine, 36 Lake Forest, St. Louis, Missouri
 PRATT, Arkie Lee, 2203 Clay, Murphysboro, Illinois

Q

QUIRK, Mary Jane, 6059 McPherson, St. Louis, Missouri

R

RAUPP, Barbara, 404 South Crea Street, Decatur, Illinois
 RAUPP, Betty, 404 South Crea Street, Decatur, Illinois
 REID, Betty, 410 Dal-Whi-Mo Court, Sedalia, Missouri
 RICHARD, Mary Virginia, 3920a Minnesota, St. Louis, Missouri
 RIEDEL, Mary Elizabeth, 615 Center Street, Hannibal, Missouri
 RIZZIE, Josephine Catherine, 319 East Main Street, Staunton, Illinois
 ROHMAN, Roslyn, Brimfield, Illinois
 RYAN, Alice Anne, 5932 Waterman, St. Louis, Missouri

S

SABADELL, Henrietta, Hotel Chase, St. Louis, Missouri
 SACKBAUER, Dorothy, 3 Elm Avenue, Glendale, Missouri
 SANDERS, Joan, 4971½ Highland Avenue, St. Louis, Missouri
 SANSONE, Anna Marie, 7035 Forsythe Boulevard, St. Louis, Missouri
 SANSONE, Marie, 7035 Forsythe Boulevard, St. Louis, Missouri
 SAPPINGTON, Marilyn Jean, 5022 Miami, St. Louis, Missouri
 SAWYERS, Alice Lee, 110 W. Thirteenth Street, Roswell, New Mexico
 SCHINDLER, Ruth, 400 N. Walnut Street, Perryville, Missouri
 SCHINDLER, Virginia, 902 Country Club, St. Louis, Missouri
 SCHNEBLIN, Mary Alice, 6207 Michigan, St. Louis, Missouri
 SCHUH, Betty Marie, 9009 Gravois Avenue, St. Louis, Missouri
 SCHULER, Mary Katharine, 1 Tunstall Place, Ferguson, Missouri
 SCOTT, Mary Jane, 1022 West Seventh, Sedalia, Missouri
 SICKING, Gloria Veronica, 5711 Milentz, St. Louis, Missouri
 SIMON, Jane Marie, 4263 Maryland Avenue, St. Louis, Missouri
 SLAUGHTER, Laura, 608 West Main Street, Fredericktown, Missouri
 SMITH, Rita, 5412 Ruskin Avenue, St. Louis, Missouri
 SPRINGMAN, Cecilia, 1129 State Street, Alton, Illinois
 SVERDRUP, Anna Margrethe, 1155 Hillside Drive, St. Louis, Missouri
 SWEENEY, Patricia, 6160 Tennessee Avenue, St. Louis, Missouri

W

WAHLERT, Mary Rita, 36 Broadview Drive, St. Louis, Missouri
 WALKER, Marjorie Anne, Winchester, Illinois
 WALSH, Rosemary, 6708 Hancock Avenue, St. Louis, Missouri
 WARD, Rosemary, 7336 Princeton, St. Louis, Missouri
 WEBER, Marian, 1224 Sunset Avenue, Richmond Heights, Missouri
 WELLS, Dorothea, 416 South Gore, Webster Groves, Missouri
 WILLARD, Jeanne Anita, 1830 Peachtree Road, Atlanta, Georgia
 WILLIAMS, Enid Roberta, 7347 Lindell, St. Louis, Missouri
 WINTZ, Mary Adele, 7162 West Park, Richmond Heights, Missouri
 WISS, Eileen Ruth, 305 South Spruce Street, Pana, Illinois
 WITTE, Clara Marie, 8937 Lawn Avenue, Brentwood, Missouri
 WOELFLE, Rosemary, 5705 Terry Avenue, St. Louis, Missouri
 WOLF, Genevieve Angela, 160 Cornelia Avenue, Glendale, Missouri
 WOTAWA, Alice Jo, 4150 Fairview, St. Louis, Missouri
 WRIGHT, Edwina, 8139 Glen Echo Drive, St. Louis, Missouri

Y

YANN, Dolores Ann, 3238 Barrett Street, St. Louis, Missouri

Autographs



