

Fontbonne

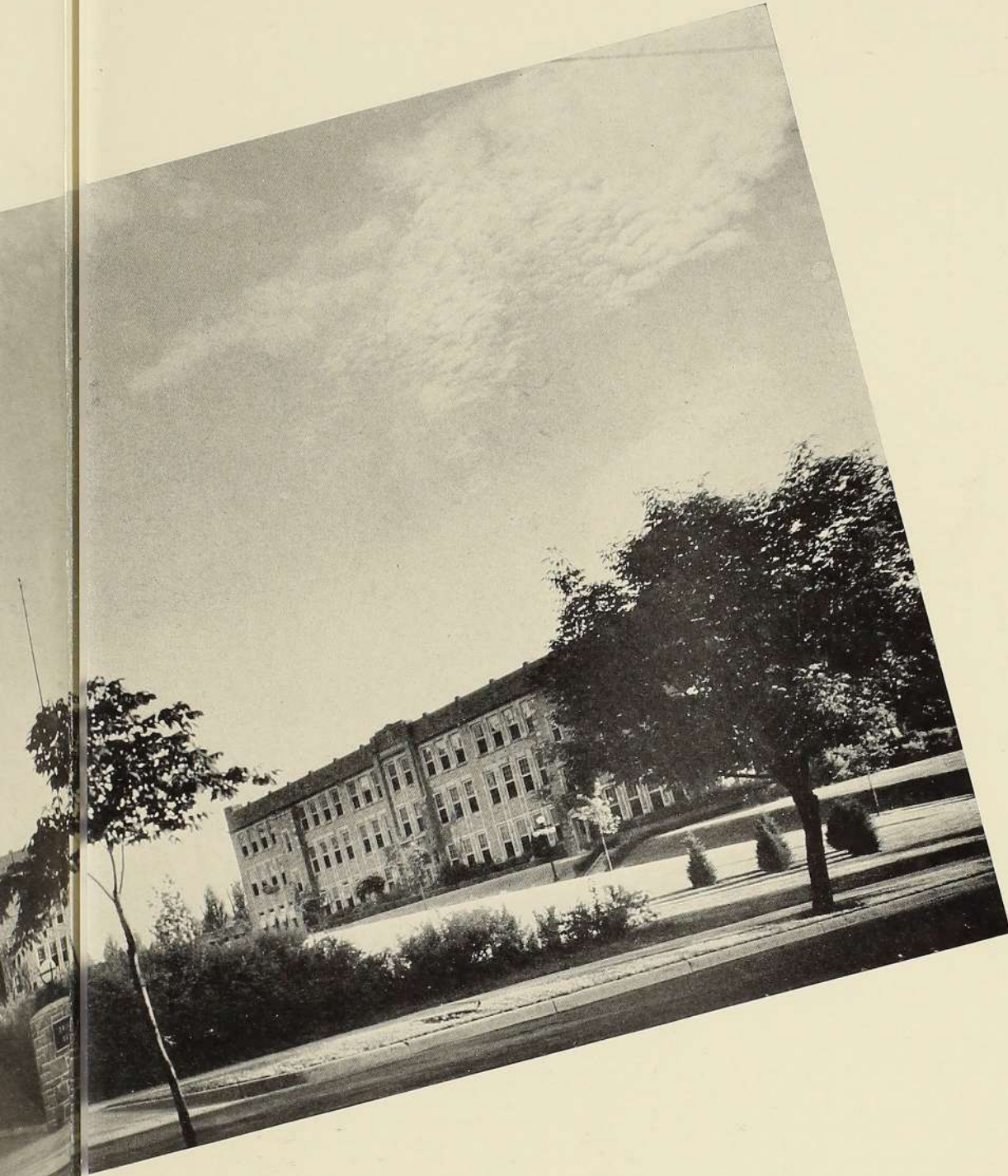


1941

Ex Libris



Sister Susanne Marie Tachon, C.S.J.
Registrar's Office
FONTBONNE ARCHIVES



Nineteen Forty-one



For You

The College Year of 1940-'41

Announcing

The Form

ROSEMARY HAWARD

Editor

ALEEN BLOCK

Photo Editor

BETTY HIGGINS

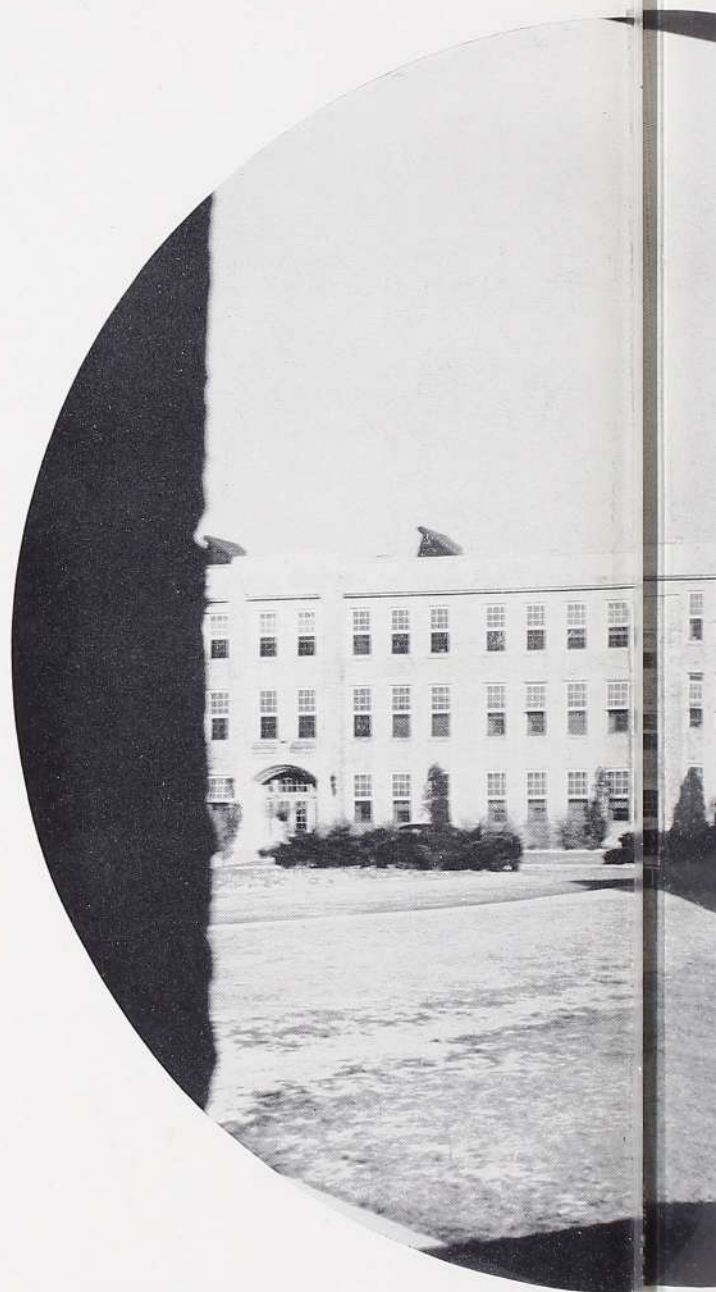
Feature Editor

BARBARA RAUPP

Business Manager

DOROTHY BUSSMANN

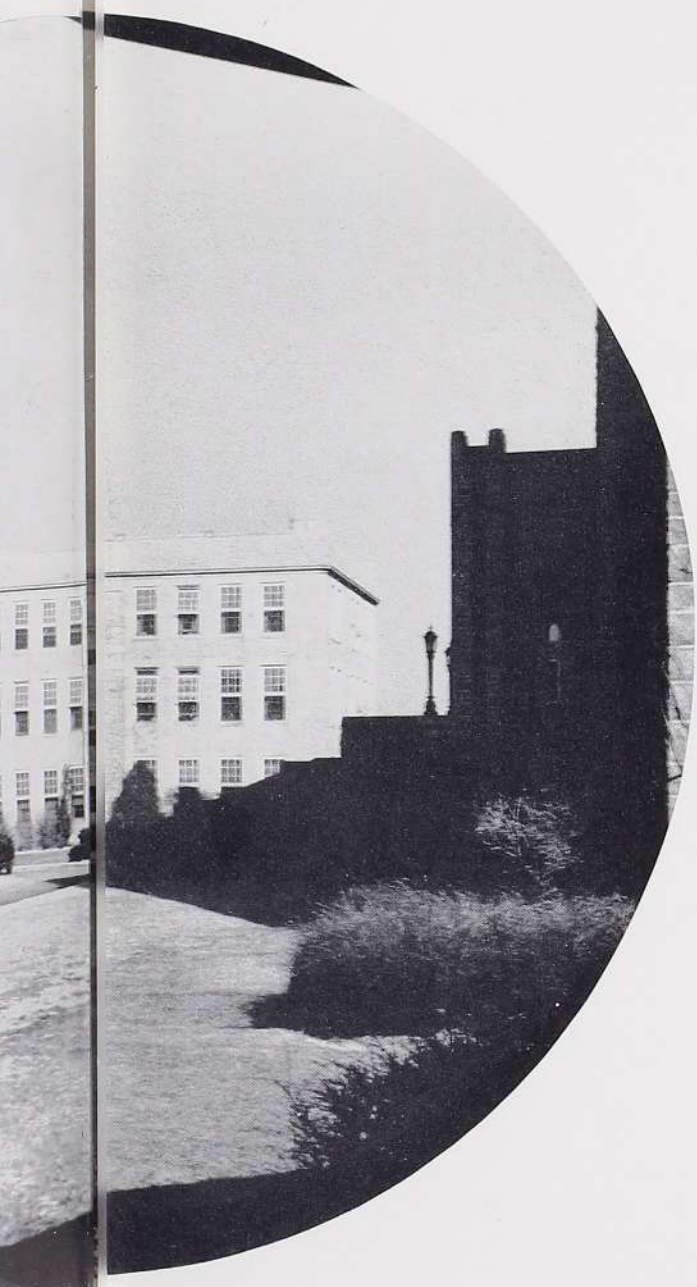
Advertising Manager

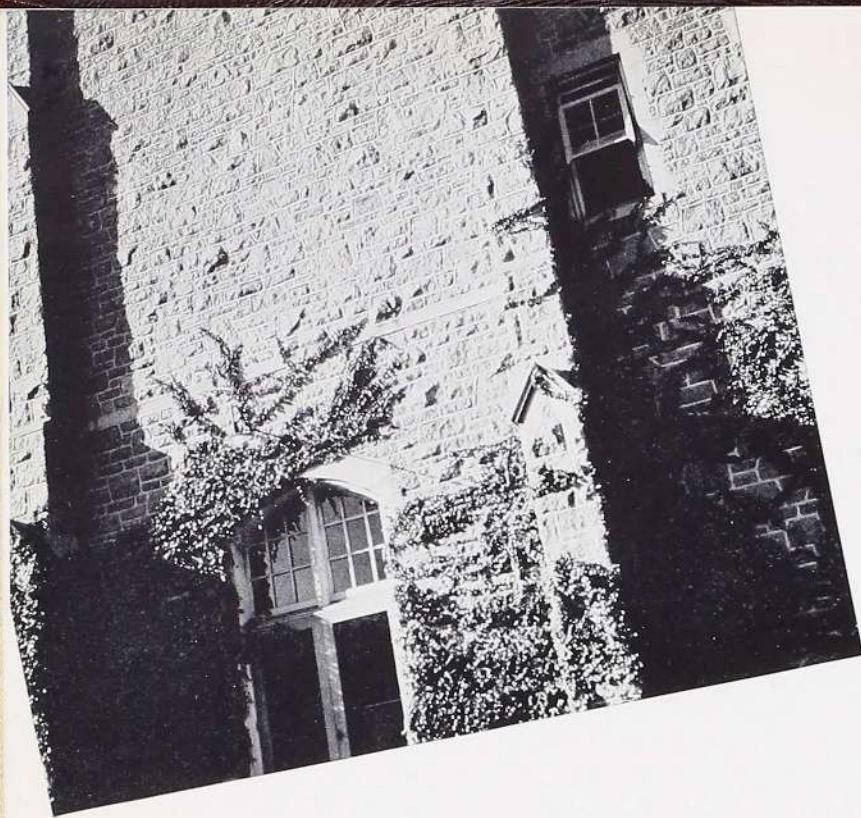


Fontbonne

'Forty-One

The annual
publication
of the
students of
Fontbonne
College,
St. Louis,
Missouri





A Pause

LIKE RADIO WAVES, LIKE
OF THAT TOMORROW
ATTEMPT TO RECAPTURE
AND DESIRES OF YOUTH. TO ENABLE US
BOOK AS A REMINISCENCE OF A PAST
A WORLD IN FLAMES—BUT TO LET IT
TOWERS OF LEARNING, A REMINDER OF
TRUTH, COURAGE, AND STRENGTH UNDER
PRIVILEGE OF LIVING—TO THIS PURPOSE

se — *for the Future*

LIKE A SPLIT-SECOND DASH INTO THE SPIRIT
ROW WHICH TOO SOON BECOMES TODAY, IS THE
TURE FOR A MOMENT THE ILLIMITABLE JOYS
E US IN FUTURE DAYS NOT TO HOLD THIS
AST AGE—AN AGE WHOSE FOUNDATIONS BECAME
T IT SYMBOLIZE THE LOFTY AERIAL
R OF THOSE RADIANT IDEALS OF
NDER WHICH WE NOW HAVE THE
POSE WE DEDICATE OUR BOOK.





Around the

• At the Controls

Programs originate with the faculty, so we take you behind the scenes on this program.

• Personal Interviews

A private interview with the featured stars on the Fontbonne program—the classes.

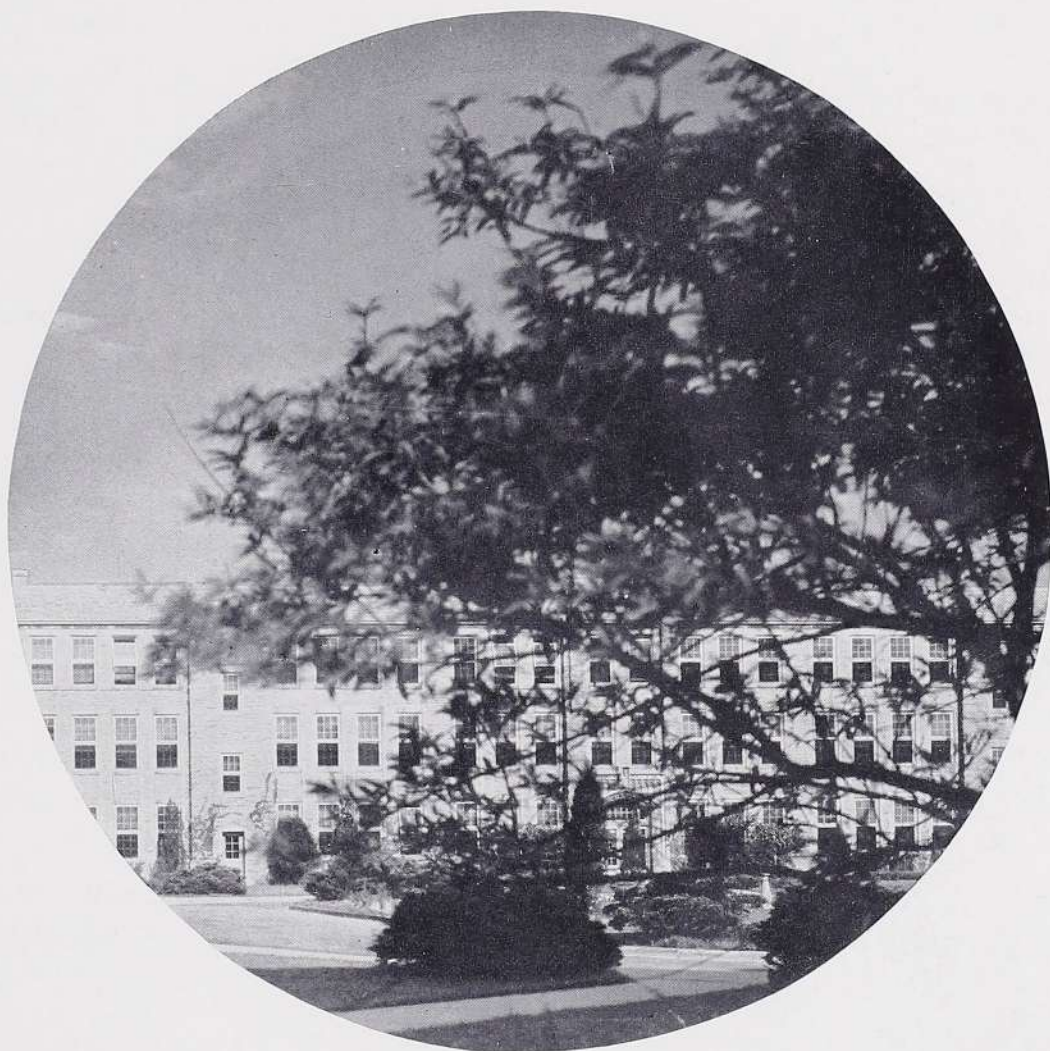
• Forum of the Air

The clubs represent audience participation in the changing Fontbonne Forum of the Air.

• Features on the Network

Activities are the network features that present a composite broadcast of Fontbonne's fame.

d the Dial



FINE ARTS BUILDING

They're at the

ADMINISTRATION

MOTHER JOSEPH ALOYSIUS GEISSERT,
C.S.J., A.M.
President

SISTER MARIETTA JENNINGS,
C.S.J., Ph. D.
Dean

SISTER SUSANNE MARIE VACHON,
C.S.J., A.B.
Registrar

SISTER MARY HILDA LARSBACH,
C.S.J., A.B.
Treasurer

Mother Joseph Aloysius has the most winning smile on the campus. Mother is unselfish and untiring in her zeal for our welfare.

Sister Marietta leads a dual life as Dean and Professor of History, but in either capacity she commands and commends with equal grace and impartiality.

Sister Susanne is a friend in need. Competent and efficient, she unties many a knot in a bewildering schedule. Her favorite colors are black and blue!

Holder of the purse strings is **Sister Hilda**, and a gold mine in more ways than one. Future secretaries, please note: Sister does **not** believe in rest for the weary.

If you're in need of first aid, just see **Miss Aird**. She'll take your blood count at the drop of a hypodermic.

Miss Baer is the woman who knows all the answers, especially the location of that certain book. Maybe you didn't suspect it, but she has a neat sense of humor.



Belle M. Mullins



Rev. James J. Higgins



Rev. Emmet Crane

at the Controls

Sister John Joseph specializes in polyphony and in planning outstanding concert programs for music lovers.

Rumor hath it that **Sister Sylvia Marie** is collecting literature for the boys in camp, but that doesn't interfere with the Missions or the Poetry Club.

Because **Sister Patricia** can make ends meet mathematically, we're going to make her business manager of **The Fontbonne**.

Miss Carmody possesses all the social graces. On and off campus, she is a model of poise and good-grooming.

You'd better not say, "Ich spreche Deutsch" to **Sister St. Paul** unless you're prepared to carry on.

Father Cantwell is the apologist extraordinary who has a fund of Greek words and flying hyppopotami.

Dr. Clemens is an authority on social problems, as his students know, to their sorrow. Congratulations, Doctor!

Father Crane's endless good nature is a guarantee of painless learning. We miss his smile because he's in the army now!

If you ever want to check up on Roman daily life, please consult **Sister Anna Mechtilda**, classical scholar.

Sister Athanasia is a devotee of Saint Theresa, ever mindful of the present, but too wise to discard the experiences of the past.

The possessor of a charming personality is **Sister Mary Berchmans**, quiet and gentle, teacher, scholar, true friend, supporter of the press.

We have it on good authority that **Miss Fuehlen** is the only person in the world who can be in six places at once.

Sister Mary Antone is a musician to her fingertips, a genuine intellectual whose shyness intrigues her students.



Gertrude M. Horgan



Gwynette C. Willis



Virginia L. Fuehlen



Mrs. Edward Kallaher

Around the



Alphonse H. Clemens

Theresa M. Carmody

Gertrude Troemel

Eleanora Baer

Sister Frederic is French, mais oui! And how she can wage a blitzkrieg when you're late for class!

Sister Felicite is the perfect teacher for a class in diplomacy, because she is a firm believer in the process of arbitration. Calm, cool, collected.

He's new to us this year, is **Father Higgins**, but his interesting lectures on Church History keep the restless members of the class of '43 quiet.

Those broad "a's" and non-existent "r's" floating around the Press Room let you know that we have a Bostonian in our midst, **Miss Horgan**, publications adviser.

Who promotes vitamins at Fontbonne? Of course, it's **Sister Jeanne d'Arc**, who would be so happy if everyone would eat parsley.

Those sparkling eyes are so-o-o nice and Spanish! **Mrs. Kallaher** promotes cooperation with our South American friends in her Spanish classes.

Sister Rose Agnes can't stand nicknames! A competent instructor, she "gives credit where credit is due!"

Miss Mullins is a "human dynamo" as her majors will agree. If she had to put on a play at ten minutes' notice, she'd do it successfully!

Sister Mary Pius's gentle voice doesn't deceive her students who know her as an authority on men's thoughts from the time of Aristotle and an expert at exposing the fallacy in a syllogism.

Sister Rose Catherine is the most willing listener on the campus. We hear that she reminds the music students of "harmony."

The essence of impartiality and the understanding adviser is **Sister Alfred**, the exponent of the psychological approach.

and the Campus

Just take your practice teaching troubles to **Sister Berenice** and all will be well! She makes the technique of teaching seem so easy.

Sister St. Luke has a new post, that of "sergeant-at-arms" of the library, for which the real "students" are grateful.

Sister Catherine de Ricci's occasional spurts of absent-mindedness endear her to all who come in contact with her.

Although **Sister Margaret John** is busy with her studies at the U., we understand that she has influence in Fine Arts.

Miss Richieri's fluent Italian bubbles like the ripples of Spring, and her accent is a thing of beauty—a joy forever.

Sister Lucida's informative and interesting History classes will be resumed when she finishes the book which she is writing.

The class of '44 has passed the fledgling stage, thanks to **Sister Marguerite's** good offices.

Don't be surprised if **Sister Martha** asks you to use your imagination. It's her favorite indoor sport.

Monsignor Steck's class in Christian Marriage is an inspiration and a revelation to the class of '41.

Sister Edwina knows the Bible, from cover to cover, and can quote verbatim, book by book, psalm by psalm.

Connoisseur of art is **Miss Troemel**. She has the power to bring out the best in a student. No "A's," Miss T?

Sister Rose Margaret practically lives on street-cars in her capacity of supervisor of music.

Miss Willis manages to combine sports and dramatic art without any effort. She's crazy over horses, especially when Spring rolls around!



Margaret Aird, R. N.

Msgr. Leo J. Steck

Elda Richieri

Rev. Joseph Kiefer

THE FACULTY

Mother Joseph Aloysius Geissert, C.S.J., A.M.	<i>President</i>
Margaret Aird, B.S. in Nursing	<i>Instructor in Home Nursing</i>
Eleanora Baer, A.B.	<i>Librarian</i>
Sister Louis Joseph Bauer, C.S.J., B.M.	<i>Instructor in Music</i>
Sister John Joseph Bezdek, C.S.J., A.B., M.M.	<i>Professor in Music and Director of the Department</i>
Sister Sylvia Marie Boothby, C.S.J., A.M.	<i>Professor in English and Director of the Department</i>
Sister Mary Patricia Callaghan, C.S.J., A.M.	<i>Professor in Mathematics</i>
Reverend John England Cantwell, S.J., A.M., S.T.L.	<i>Instructor in Religion</i>
Theresa M. Carmody, B.S., M.S. in Home Economics	<i>Instructor in Home Economics</i>
Sister St. Paul Christman, C.S.J., A.M.	<i>Instructor in German</i>
Alphonse H. Clemens, A.M., Ph.D.	<i>Professor in Economics and Sociology</i>
Reverend Emmet Crane, C.Ss. R.	<i>Professor in Religion</i>
Sister Anna Mechtilda Dolin, C.S.J., A.M.	<i>Professor in Latin and Director of the Department</i>
Sister Bernard Joseph Dunne, C.S.J., A.M.	<i>Associate Professor in English</i>
Sister Mary Athanasia Dunnebacke, C.S.J., A.M.	<i>Professor in Chemistry</i>
Sister Mary Berchmans Fournier, C.S.J., A.M., Cand. Ph.D.	<i>Professor in French and Director of the Department</i>
Virginia Louise Fuehlen, A.M.	<i>Social Representative</i>
Sister Mary Antone Gaydos, C.S.J., A.B.	<i>Instructor in Music</i>
Sister Mary Frederic Glaser, C.S.J., A.M.	<i>Professor in French</i>
Sister Marie Felicite Henratty, C.S.J., A.M.	<i>Associate Professor in History</i>
Reverend James J. Higgins, C.Ss. R., A.M.	<i>Instructor in Religion</i>
Gertrude Marie Horgan, A.M., Ed.M.	<i>Instructor in English and Journalism</i>
Sister Jeanne D'Arc Hurley, C.S.J., Ph.D.	<i>Professor in Home Economics and Director of the Department</i>

THE FACULTY

- Sister Marietta Jennings, C.S.J., Ph.D.
Dean of the College, and Director of the Department of History
- Mrs. Edward J. Kallaher, A.B. *Instructor in Spanish*
- Sister Rose Agnes Keyes, C.S.J., M.S. *Instructor in Biology*
- Sister M. Hilda Larsbach, C.S.J., A.B. *Instructor in Commercial Science*
- Belle M. Marie Mullins, B.E., A.B.
Director of the Department of Speech and Dramatics
- Sister Mary Pius Neenan, C.S.J., Ph.D.
Professor in Philosophy and Director of the Department
- Sister Rose Catherine Nicely, C.S.J., B.M.
Instructor in Violin and Music Theory
- Sister Mary Alfred Noble, C.S.J., Ph.D. *Professor in Psychology*
- Reverend Leo J. Ohleyer, O.F.M., S.T.D. *Professor in Religion*
- Sister Mary Berenice O'Neill, C.S.J., Ph.D.
Professor in Education and Director of the Department
- Sister Saint Luke O'Neill, C.S.J., A.B., B.S. in L.S. *Assistant Librarian*
- Sister Catherine De Ricci Ostermann, C.S.J., A.M.
Professor in Chemistry and Director of the Department
- Sister Margaret John Purcell, C.S.J., A.M. *Associate Professor in English*
- Elda O. Richieri, A.B. *Instructor in Italian*
- Sister Mary Lucida Savage, C.S.J., Ph.D. *Professor in History*
- Sister Mary Marguerite Sheeley, C.S.J., M.S. *Instructor in Biology*
- Sister Mary Martha Scott, C.S.J., M.S. in Home Economics
Instructor in Home Economics
- Very Reverend Monsignor Leo J. Steck
Professor in Religion
- Sister Mary Edwina Tobin, C.S.J., A.M.
Associate Professor in Classical Languages
- Gertrude Troemel, M.S.
*Instructor of Related Art and Director of Department
of Fine Art*
- Sister Susanne Marie Vachon, C.S.J., A.B.
Registrar of the College
- Sister Rose Margaret Vander Zander, M.M.
Instructor in Music
- Gwynette Claudia Willis, A.B.
*Instructor in Physical Education and Director of
the Department*



P
E
R
S
O
N
A
L





Interviews

O, Fontbonne, We Love You,

DOROTHY BARADA

A.B. in English

Corr. Secty., Poetry Club, '41
Daisy Chain Bearer, '38
Delta Phi, '40, '41
President Junior Class
Sodality, '38, '39, '40, '41
Student Council, '39, '40
Vice-President Press Club, '41
Who's Who in American Colleges, '40



DOROTHY BAUMSTARK

A.B. in Biology

Daisy Chain Bearer, '40
President Resident Students' Assn.,
'41
Secretary Sodality, '41
Sigma Beta Mu, '38, '39, '40, '41
Student Council, '41
Vice-President Glee Club, '41
Vice-President Phi Beta Chi, '38, '39,
'40, '41

W E P R E S E N T

Your Purple and Gold



ANITA BLINZINGER

B.S. in Food and Nutrition

St. Louis University, '38, '39, '40
Home Economics Club, '41

IRENE BOLAND

A.B. in History

Glee Club, '38, '39
C.S.M.C., '38, '39, '40, '41
French Club, '40, '41
Sodality, '38, '39, '40, '41
Vice-President Poetry Club, '41



T H E S E N I O R S

We Pledge Our Allegiance

DOROTHY BUSSMANN

A.B. in Sociology

Athletic Assn., '38, '39, '40
C.S.M.C., '38, '39, '40, '41
Daisy Chain Bearer, '39
Sodality, '38, '39, '40, '41
Vice-President I.R.C., '41
Who's Who, '41



A L I C E C E J K A

A.B. in Economics

President C.S.M.C., '41
President Poetry Club, '41
Secretary Diplomats Club, '41
Secretary Glee Club, '41
Secretary Senior Class
Spiritual Council, '40
Sodality, '38, '39, '40, '41

W E P R E S E N T

Which Ne'er Shall Grow Cold



MARY CONCANNON

A.B. in Dramatic Art

Daisy Chain Bearer, '39
Poetry Club, '40, '41
President C.S.M.C., '40
Treasurer Student Council, '41
Vice-President Footlights Club, '41
Who's Who, '41

HELEN DILLON

B.S. in Home Economics

Daisy Chain Bearer, '40
C.S.M.C., '38, '39, '40, '41
Home Economics, '38, '39, '40, '41
Press Club, '41
Sodality, '38, '39, '40, '41
Sophomore Class President



T H E S E N I O R S

As Strong As the Granite

RUTH DUERR

A.B. in Sociology

Athletic Assn., '38
C.S.M.C., '38, '39, '40, '41
President Diplomats Club, '41
Sigma Beta Mu, '40
Sodality, '38, '39, '40, '41



GERALDINE DUGGAN

A.B. in Latin

Business Manager *Font*, '40
President Classical Club, '40
Secretary Freshman Class
Sodality Prefect, '41
Spiritual Council, '39, '40, '41
Student Council, '40, '41
Vice-President French Club, '39
Who's Who, '40

W E P R E S E N T

That Builds Your Firm Walls



JUNE FLEMING

A.B. in Dramatic Art

Footlights Club, '38, '39, '40, '41

MARY ELLEN FLICKINGER

A.B. in Economics and Business

Athletic Assn., '38

C.S.M.C., '38, '39, '40, '41

Diplomats Club, '39, '40, '41

Glee Club, '38, '39, '40, '41

Poetry Club, '38, '39

Sigma Beta Mu, '38, '39, '40, '41

Sodality, '38, '39, '40, '41

Vice-President Resident Students

Assn., '41



T H E S E N I O R S

Shall Lead Us To Godward

HELEN GUYOL

A.B. in History

Corr. Secty. Poetry Club, '40
Diplomats Club, '40, '41
French Club, '40, '41
Sodality, '38, '39, '40, '41
Student Council, '41
Vice-President French Club, '40
Who's Who, '40



ROSEMARY HAWARD

A.B. in Dramatic Art

St. Teresa College, Kansas City, Mo.,
'38, '39
C.S.M.C., '40, '41
Editor *Fontbonne*, '41
Footlights Club Secretary, '40, '41
Press Club, '40, '41
Sodality, '40, '41
Resident Students Assn. Treas., '41

W E P R E S E N T

Whatever Befalls



ROSEMARY HAYDEN

A.B. in Dramatic Art

Classical Club, '41
Maid to May Queen, '39
Poetry Club, '39, '40, '41
President Footlights Club, '41
Press Club, '40, '41
Vice-President Student Council, '41
Who's Who, '40

PATRICIA HIGGINS

A.B. in Fine Art

Webster College, '38, '39
C.S.M.C., '40, '41
French Club, '41
Maid to May Queen, '40
President Delta Phi, '41
Sodality, '40, '41



T H E S E N I O R S

In Youth's Glad Fair May-time

LENORE KLAUS

B.S. in Biology

St. Marys College, '38, '39

C.S.M.C., '40, '41

Phi Beta Chi, '39, '40, '41

Sodality, '38, '39, '40, '41



BETTY ANN LABARGE

A.B. in Mathematics

French Club, '41

Maid to May Queen, '39

Phi Beta Chi, '40, '41

President Student Assn., '41

Secretary of Class, '39, '40

Sodality, '38, '39, '40, '41

Student Council, '40, '41

Who's Who, '41

W E P R E S E N T

We Came To Your Arms



MARY MARGARET LYNCH

B.S. in Home Economics

St. Teresa College, Kansas City, Mo.,

'38, '39

C.S.M.C., '40, '41

Daisy Chain Bearer, '40

Diplomats Club, '41

Home Economics Club, '40, '41

Secretary Resident Students' Assn.,

'41

Sodality, '40, '41

MARY MARGARET MANNING

B.S. in Home Economics

C.S.M.C., '38, '39, '40, '41

Home Economics Club, '38, '39,

'40, '41

Sodality, '38, '39, '40, '41



T H E S E N I O R S

Your Love Has Caressed Us

MARGARET MILLER

B.S. in Home Economics

C.S.M.C., '38, '39, '40, '41
Daisy Chain Bearer, '38
Home Economics, '38, '39, '40, '41
Sodality, '38, '39, '40, '41
Class Treasurer, '39
Class Vice-President, '40



ISABELLE MANSOUR

B.S. in Home Economics

University of Arkansas, '38
C.S.M.C., '39, '40, '41
Phi Beta Chi, '39, '40, '41
President Home Economics, '41
Sodality, '39, '40, '41

W E P R E S E N T

Has Shielded From Harms



BETTY MURPHY

A.B. in Art

St. Teresa College, Kansas City, Mo.,

'38, '39

C.M.S.C., '40, '41

Secretary Delta Phi, '41

Spiritual Council, '41

Sodality, '40, '41

Treasurer Senior Class

DOLORIS SCHULTE

B.S. in Biology

Athletic Assn., '39

C.S.M.C., '38, '39, '40, '41

Delta Phi, '39, '40, '41

Phi Beta Chi, '40, '41

Sodality, '38, '39, '40, '41



T H E S E N I O R S

Your Standards Have Formed Us

VIRGINIA SHEEHAN

A.B. in Spanish

C.S.M.C., '38, '39, '40, '41

Sodality, '38, '39, '40, '41



HELEN STIERS

B.S. in Food and Nutrition

C.S.M.C., '38, '39, '40

Daisy Chain Bearer, '38

Home Economics Club, '38, '39,
'40, '41

Phi Beta Chi, '39, '40, '41

President of Senior Class

Student Council, '41

Who's Who, '41

W E P R E S E N T

Your Faith Has Inspired



MARY ELLEN SULLIVAN

B.S. in Home Economics

C.S.M.C., '38, '39, '40, '41

Maid to May Queen, 40

Press Club, '40, '41

Vice-President Home Economics, '41

Vice-President Sophomore Class

ANNE SWANGER

B.S. in Home Economics

C.S.M.C., '38, '39, '40, '41

Glee Club, '38

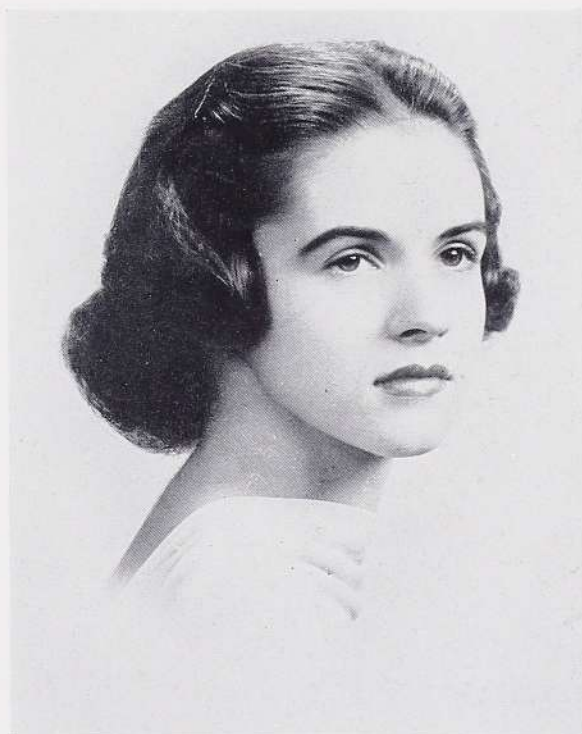
Home Economics, '38, '39, '40, '41

Maid to May Queen, '38

Sodality, '38, '39, '40, '41

Student Council, '39

Treasurer Delta Phi, '40



T H E S E N I O R S

We Found In Your Portals

ROSE MARY TLAPEK

A.B. in English

C.S.M.C., '38, '39, '40, '41

French Club, '40

Poetry Club, '39, '40

Sodality, '38, '39, '40, '41



MARY ELIZABETH TRACY

B.S. in Physical Education

Circulation Manager *Font*, '41

Delta Phi, '41

Press Club, '38, '39, '40, '41

President Athletics Assn., '41

Sodality, '38, '39, '40, '41

Treasurer Footlights Club, '41

Treasurer Junior Class

Who's Who, '40

W E P R E S E N T

Ideals We Desired



ALICE VOEGELI

A.B. in Music Theory

C.S.M.C., '38, '39, '40, '41
Classical Club Treasurer, '41
Poetry Club, '40, '41
Press Club, '40
Sigma Beta Mu President, '41
Who's Who, '41

RUTH JEANNETTE STONE

B. S. in Home Economics

SISTER ANGELA MARIE BECKER, C.S.J.

B. S. in Home Economics

SISTER MARY CHRISTINIANA FLECKENSTEIN, P.H.J.C.

B. S. in Home Economics

SISTER AUGUSTINE KEARNEY, O.S.U.

B. S. in Home Economics

SISTER RUTH MARIE CALL, O.S.U.

B. S. in Home Economics

SISTER ERNESTINE FUHS, C.S.J.

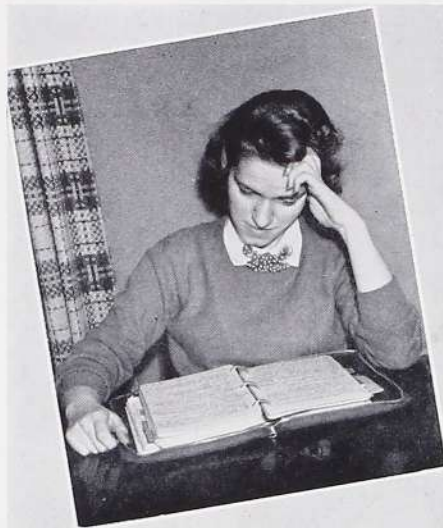
A.B.

SISTER GEORGIANA MARIE REINHART, C.S.J.

A.B.

T H E S E N I O R S

The Seniors Star On



DOROTHY BARADA laughs at life! She's definitely a happy-go-lucky but always manages to find time to read the newspapers. She has a boundless supply of anecdotes and never hesitates to deplete it.



This girl is just about "tops" in studies and the nice part about it is that she doesn't act like it. Always there when you need her, DOROTHY BAUMSTARK is a friend indeed and anybody's candidate for greatness!



One of the most conscientious students at Fontbonne is the pleasant personality of ANITA BLINZINGER. An intense and earnest worker, she is an asset to any classroom or conversational group. Her favorite pastime is browsing in the library.

Information, Please

What is this thing called humor—ask IRENE BOLAND, she has a monopoly on the field—especially when she keeps that droll expression on her face. She plans to write a streamlined history of the world in one of her spare moments.

Some Social Service agency is very lucky — DOROTHY BUSSMANN will be seeing you soon! Her poise is remarkable; only the wittiest comment earns the favor of her smile. She spends half her time wondering what this younger generation will do next!

You're looking mighty stern here, ALICE CEJKA, but we know better. Between the Poetry Club's demands, and steering the way of C. S. M. C., capable Alice is busy enough for two people, but she keeps her sense of humor and has a good time along with her work.



The Seniors Star O. J.



Meet the reincarnation of "Little Nelly Kelly"! Her fervent sincerity is refreshing, but one should be wary of her conversation, for she is slyly philosophical. With all her Irish ways, MARY CONCANNON is slightly rambunctious at times and is really a little rebel at heart!



Helen is the composite of an era that is fast dying out—she's actually funny! One never knows what a panorama of thoughts is parading behind that droll expression. Watch the radio page—you'll soon be entertained with HELEN DILLON'S "Kitchen Kapers."



RUTH DUERR has very definite ideas about youth in college—certainly she should have sufficient background for her convictions with such an extensive repertoire of social studies and sciences. After Ruth leaves, Marguerite will run the Lone Ranger out of business.

0 Information, Please

Versatile GERRY DUGGAN is the scholar, athlete, leader, and friend. She is always sympathetic, ever willing to help. Exemplar of school spirit, the model perfect, the ardent classical student, but, foremost she is the ever changeless friend!

JUNE FLEMING has the very kind of a speaking voice one dreams of possessing. Already successful in radio, June promises to do still better things in this work. Her friendliness is evident at first meeting and she never forgets her friends.

MARY ELLEN FLICKINGER is as quiet and reserved as Greenfield is Iowa. Who would think that such a shy personality would be studying how to cure the economic troubles of the world! But comes the revolution, who knows?



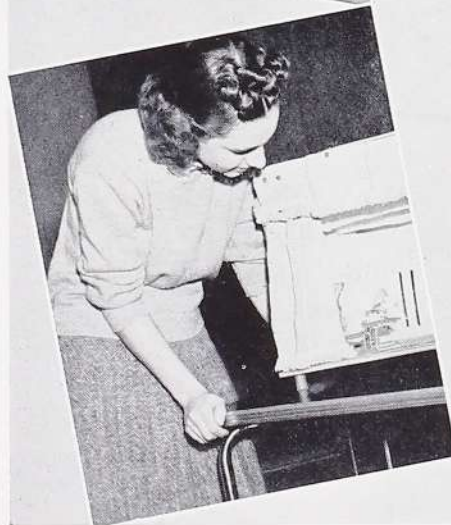
The Seniors Star On



When she's not worrying about history, HELEN GUYOL and the Fire Department are just like that! What we like about her is that quizzical expression on her face during assembly, but most of all, where did she get the name "Jo"?



Meet the Editor, that Kansas City Kid with an accent from Nowhere! ROSEMARY HAWARD hopes to do great things in the theater and intends to do a little much-needed reformation in journalism—such as changing the makeup of St. Louis newspapers—to resemble the *Kansas City Star*!



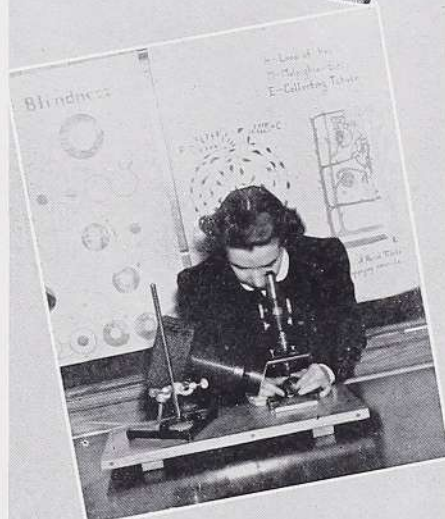
Lights, action, camera! Put the spot on ROSEMARY HAYDEN and watch her strut her stuff. She's a recording artist, too. Rosemary tried her hand at all kinds of stage work and she even played little girl and built herself a doll house!

0 Information, Please

Out from the pages of "Mademoiselle" steps pretty PAT HIGGINS, the quiet little artist who paints her gay personality on canvas. Her flair for art is expressed in her abilities in dress designing. Between painting pictures she bakes delicious gingerbread!

Who is the winner of the daily marathon to the mail box—the letter-a-day girl? LENORE KLAUS! Barring her hours in the science lab and her work in Phi Beta Chi, Lenore spends most of her time reading.

If you hear someone say, "I'm still hungry" after the second hamburger—it's BETTY LABARGE running true to form. She was born with a gavel in her hand and reciting logarithms and—it's rumored that she could outrun the Lone Ranger!



The Seniors Star On



This girl is one of the nicest presents St. Teresa's has ever given us. A tried and true home economist, MARY LYNCH's gracious personality is one of the magnetic forces on the third floor. It must be that smile!



How could you miss her? MARY MANNING—the "vitamin kid." What an ace with the sewing machine! She has a boomerang personality—that ends in a snappy comeback. But watch her eyes, because they really mean business!



Her drawl is as long as her degree! ISABELLE MANSOUR is a composite of soft speech and an apt mind printed in the popular home edition. And that isn't all—she can cure beriberi, rickets, and all the other six varieties!

0 Information, Please

Here's a girl who knows all the answers! MARGARET MILLER is an authority on the Culbertson system, so don't trump her ace. She is still a rabid Democrat, waving her Roosevelt banner every chance she gets. Beware, all you Willkie fans!

Ask BETTY MURPHY where she spends the best part of her days—she won't say in bed! You can't even sweep out the Art Room without getting her tangled up in the broom. Then ask her if she's Irish and watch her smile!

Who'd ever think of finding a biologist masquerading under the exotic name of Dolores? You have only to watch DOLORES SCHULTE peering into a microscope to realize that love doesn't take up all her time.



The Seniors Star On



Knitting needles are second nature to VIRGINIA SHEEHAN—her array of sweaters proves that. She's quite a magpie and her tongue often goes as fast as her handiwork. Ginny is stiff competition for any comedian and over the 'phone, she has the "voice with a smile."



Such a small girl for all that knowledge of dietetics! As an executive, she's no slouch either—for HELEN STIERS is really an excellent manager of time and brain space. Talk about A-1 dispositions, if Helen ever lost her temper, we'd faint!



Where are you going with that girl, Knowledge? It's true—MARY ELLEN SULLIVAN possesses that marvelous intellectual quality. Pity the slacker in one of her classes! Sully's idea of something awful is to be chauffeur for half an orphan asylum in a tudor sedan.

0 Information, Please

What the well-groomed college woman resembles—ANNE SWANGER. We don't know how she does it! Tell us your secret, Anne, and while you're at it, give us a few dressmaking hints.

Refreshing shyness in an age of noise — so ROSE TLAPEK presents herself to the world. Her intriguing personality reveals a serious nature with just a wee bit o' humor spaced at the right intervals. Rose is an all-around girl who is fun to know.

Is she stage-struck or is she a Campfire Girl? MARY TRACY won't make up her mind. Obviously dramatic, she expresses her vibrant personality even in her speech—yet she wields a mean hockey stick! Whatever the situation, Mary always has her convertible.



The Seniors Star



So you think you know music — wait until you meet ALICE VOEGELI. She has as extensive a knowledge of music as an English teacher has a vocabulary. What a demon on the dance floor! Notice to BMI—here's good material; Alice composes, too!

SENIOR CLASS OFFICERS

HELEN STIERS
President

DOROTHY BUSSMANN
Vice-President

ALICE CEJKA
Secretary

BETTY MURPHY
Treasurer



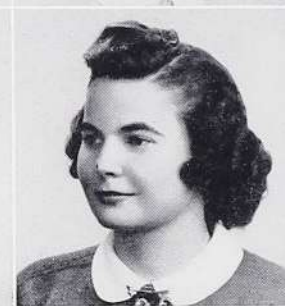
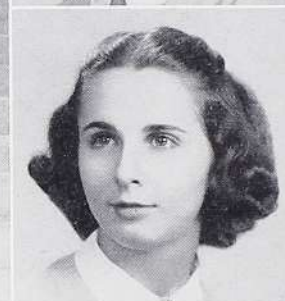
Dorothy Bussmann, Helen Stiers,
Betty Murphy, Alice Cejka

Campus Glimpses



Top Row: Ryan Hall framed with leaves. A Corner of a reception room. Bright lights from the Administration Building cast shadows on the snow. *Center:* Front campus in the spring. A sunny morning in the den. *Bottom:* Light and shadows near the east arcade. Along a sunny walk beside the Chapel's granite walls.

JUNIORS HIGHLIGHT YEAR



Adelaide Allen, Treasurer
Aleen Block, President

Evelyn Hurley

Lucille O'Connell

Mary Rita Wahlert, Vice-President
Rosemary Ward, Secretary

Mary Teresa Klecan

Archie Lee Pratt

Josepha Lorenz

Mary E. Riedel

Adelaide Allen

Marguerite Fassero

Rena Lumini

Marie Sansone

Mary E. Bass

Lorraine Flynt

Lee Maguire

Alice Lee Sawyers

WITH BANQUET AT CHASE



Anneliese Bauer ✓

Shirley Francis ✓

Ruth McNamara ✓

Jane M. Simon ✓

Aleen Block ✓

Dorothy Frank ✓

Mary M. Meyer ✓

Mary R. Wahlert ✓

Pat Burke ✓

Mary M. Gibbons ✓

Grace Milton ✓

Rosemary Ward ✓

Helen Cahill ✓

Betty Gidley ✓

Rose M. Mormino ✓

Dorothea Wells ✓

Jane Duddy ✓

Mary P. Hallinan ✓

Susanne Muller ✓

SOPHOMORE SILVER TEA LEADERS



Barbara Raupp, President

Marjorie Boeving, Treasurer

Betty Higgins, Secretary

Betty Boll, Vice-President

Rosemary Galanis

Bernice Godfrey

Mary Alice Roche

Margaret Leahy

Helen J. Macauley

Barbara Raupp

Lorraine Ash

Olive Baer

Catherine Callier

Mary Alice Chandler

Mary A. Guelker

Cecilia Hederman

Margaret Marlow

Sylvia Mastro

Mary M. Reddinger

Mary Lu Reid

COLLEGE CHARITY CAMPAIGN



Marcella Barry	Marjorie Boeving	Betty Boll	Mary E. Brandt	Rosemary Britt	Carlotta Cafferata
Marie Louise Colombo	Yvonne Cornu	Mari Costello	Dorothy J. Daniels	Helen DeCoursey	Frances Dlugon
Katherine Hernan	Betty Higgins	Mary Howard	Rainalda Igoe	Mary Ann Killion	Rica Knappen
Lenore McCarthy	Mary L. Menges	Marian Metzger	Audrey Murphy	Audrey Naumann	Genevieve Neaf
Mary V. Richards	Mary A. Roche	Mary A. Schneblin	Marian Weber	Dorothy Ziegler	

FRESHMEN OUTLINE COLLEGE

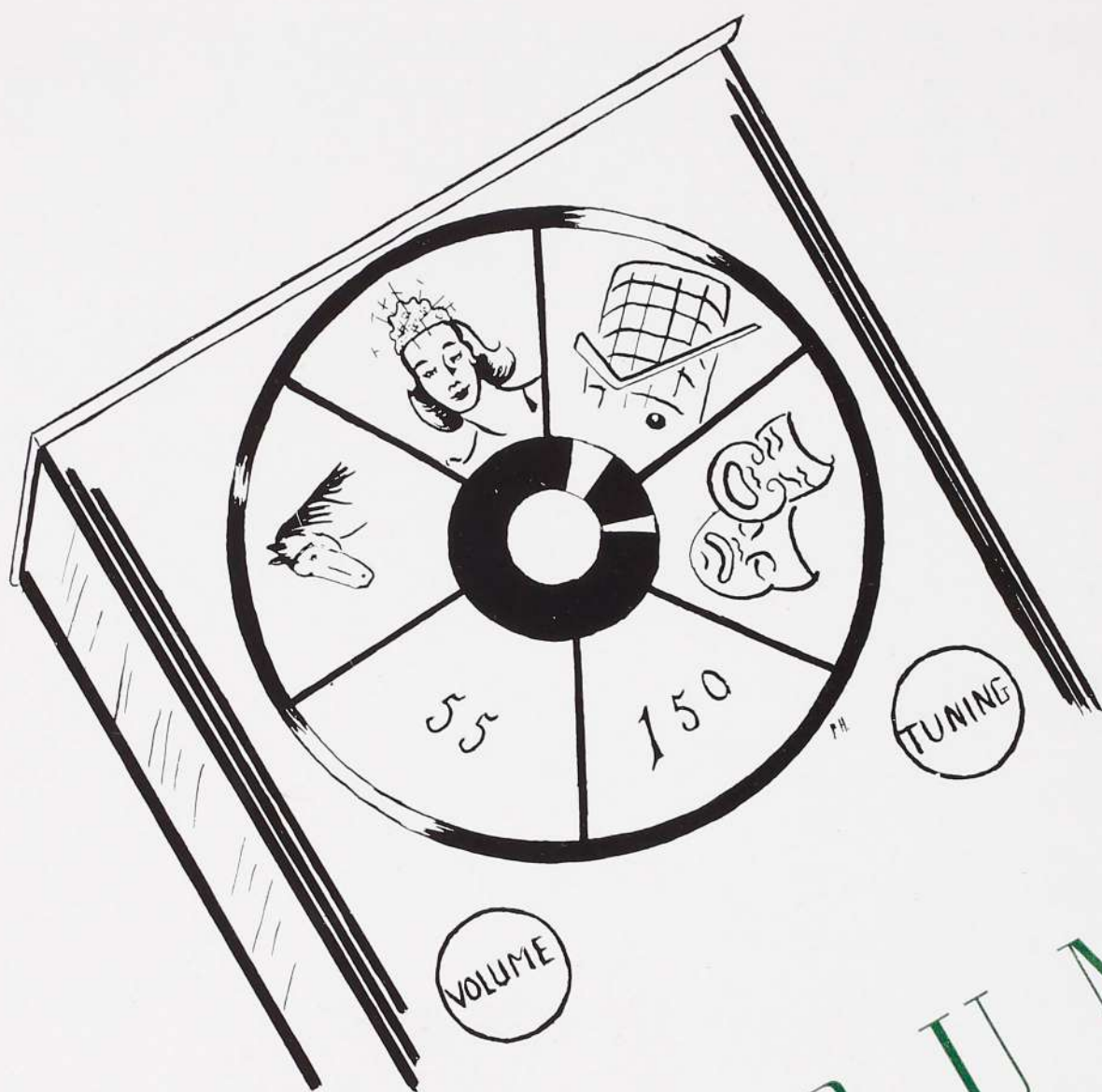


Rosemary Murphy, Pres.;	Peggy McCarthy, Treas.;	Evelyn Aubuchon	Mary Lou Bourk
Suzanne Nachtmann, V-Pres.;	Dorothy Sackbauer, Sec'y.	Veronica Carey	Mary A. Cataldi
Mary Sue Erhart	Virginia Forward	Faith Fricke	Stephanie Gidley
Bettie Knetzger	Louise LaBarge	Patricia Luce	Marilynn McAteer
Rosemary Meyer	Helen Miravalle	Rosemary Murphy	Suzanne Nachtmann
Alice Ryan	Dorothy Sackbauer	Henrietta Sabadell	Betty M. Schuh
			Laura Slaughter

ACTIVITIES FOR HIGH SCHOOLS

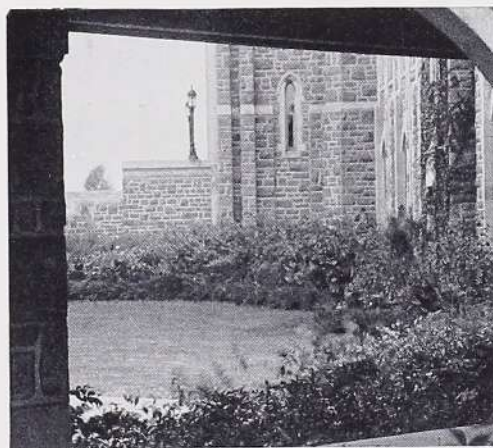


Jacqueline Broe	Kathleen Burke	Dorothy Casey	Jane Callahan	Kathleen Carrol	Gloria Caporal
Peggy Cuddy	Laura Condon	Georgene De Clerc	Rosemary Daniel	Mary Doering	Patricia Duggan
Patricia Hackett	Betty Honig	Jeanne Hellrung	Flora Hoevel	Ruth Hubenthal	Marian Knecht
Peggy McCarthy	Kitty McCullough	Mary Clara McKeon	Judy Meistrel	Mary Ann Meistrel	Agnes Menges
Isabelle O'Hara	Gloria Pandjiris	Anne Peasel	Selma Porbeck	Catherine Pendergast	Dorothy Rinderer
Rita Smith	Patricia Sweeney	Marie Tramelli	Rosemary Walsh	Rosemary Woelfle	Edwina Wright



FORUM

M
of the AIR



C.S.M.C. Gives World-Wide Aid



The Catholic Students' Mission Crusade Mobilizes for Peace.

NO! This isn't a government project as all those initials seem to indicate. It's the Fontbonne chapter of the Catholic Students' Mission Crusade.

All members are intimately acquainted with the little mite box which has traveled 'round many a classroom. From that same box help has gone out to needy people all over the world. When Father Owen Francis Dudley sent an urgent plea from the midst of war-wrecked England, the C.S.M.C. responded generously. Thousands of miles away in Patne, India, the nickels and dimes dropped in the box at class helped to relieve missionaries.

OFFICERS

ALICE CEJKA

President

MARIE SANSONE

Vice-President

OLIVE BAER

Secretary-Treasurer

But charity begins at home, for here in St. Louis aid was given the negro children at St. Elizabeth's. The Propagation of the Faith was another project.

Classical Club Studies Drama



Front row: Rosemary Hayden, Mary Concannon, Alice Voegeli, Evelyn Hurley, Marie Sansone.
Standing: Mary McCabe, Rosemary Walsh, Jane Marie Simon, Suzanne Muller, Geraldine Duggan,
Mary Virginia Richard, Mary Alice Roche, Audrey Murphy, Helen Guyol, Rose Marie Mormino.

A WELL-KNOWN quartette, but this time, not from "Rigoletto"! Fontbonne, St. Louis University, Maryville, and Webster form an interesting potential bridge game but they really meet to discuss mutual classical interests.

The Classical Club meets at the various colleges to give students of the other corporate colleges an opportunity to become better acquainted with both the school and its students.

This year, the theme of classical drama was chosen for consideration at each meeting. Roman and Greek tragedies were subjects particularly stressed. At one gathering, Father Heithaus gave an illustrated lecture on the theater of ancient Greece and Rome. Another time, the club displayed a little of its "class" and entertained the language clubs of the corporate colleges.

OFFICERS

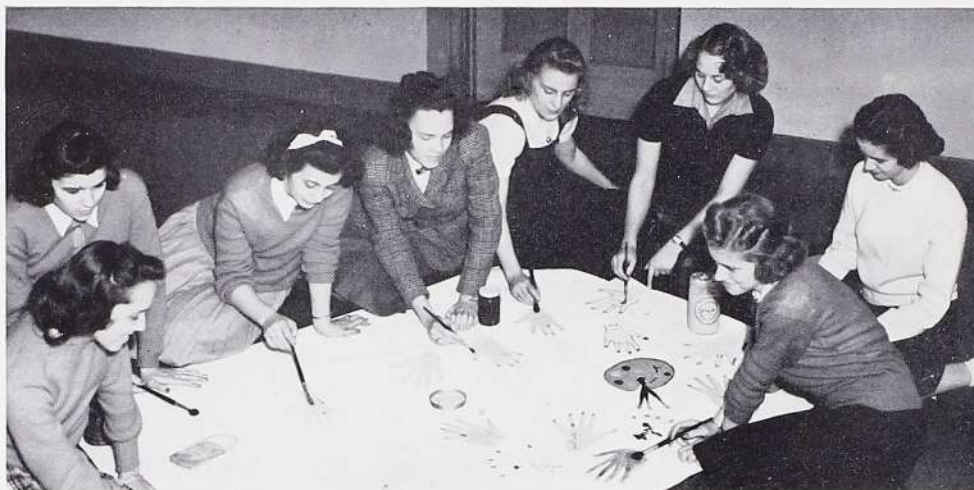
DAVID CHOPIN (St. Louis University)
President

MARY JANE BUCHANAN (Maryville)
Vice-President

EUGENIA HARTER (Webster)
Secretary

ALICE VOEGELI (Fontbonne)
Treasurer

Delta Phi Frolics With Puppets!



From left to right: Pat Higgins, Betty Higgins, Rosemary Galanis, Betty Murphy, Dolores Schulte, Rica Knaapen, Anne Swanger, Dorothy Barada.



Pat Higgins, Betty Higgins, Betty Murphy.

OFFICERS

PAT HIGGINS.....*President*
 BETTY MURPHY.....*Secretary*
 BETTY HIGGINS.....*Treasurer*

SNAP! Crackle! Pop! This isn't a cereal ad, merely a reconstruction of the noises emitting from the scene of Delta Phi's Fall rush party. A style show of newspaper ensembles designed by pledges was the highlight of the evening.

Sherlock Holmes and his fellow spooks were imaginary guests at every meeting of the club to supervise the making of puppets, inspired by Sir Arthur Conan Doyle's famous personalities. Some glue, a paper towel, and a lot of pinching and squeezing finally produced Holmes's hawklike nose. Pledges served as "apprentices" under the management of the "master craftsman," Miss Gertrude Troemel.

The Bohemian supper in the Spring was "duck soup" for the pledges, who were guests of honor. Preceding this bounteous repast, formal initiation was held to officially designate the pledges as members of a sorority dedicated to interest in art.

Athletic Club Sponsors Good Sportsmanship



Mary Tracy, Mary Alice Guelker, Ruth McNamara,
Katherine Hernan

OFFICERS

MARY TRACY
President

RUTH McNAMARA
Vice-President

KATHERINE HERNAN
Secretary

MARY ALICE GUELKER
Treasurer



Fontbonne Athletic Association Members Congregate in the Gymnasium.

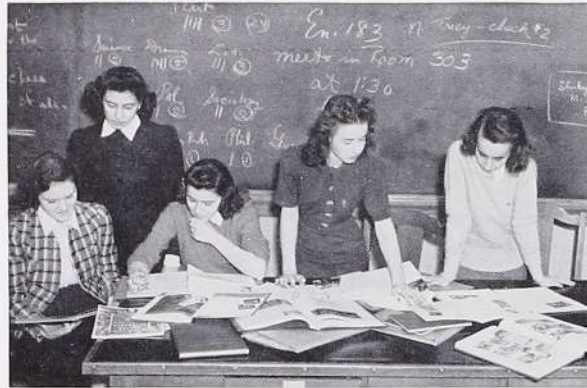
MAKE that goal! Perhaps it's on the hockey field or on the basketball court, but wherever the cry originates, it typifies the spirit of the Fontbonne Athletic Association.

The F.A.A. is no passive organization of members resting on past laurels, for the girls base their membership on the will to learn and improve, not the ability to achieve.

"Hi-yo, Silver!" becomes a familiar figure to many of the girls toward the end of spring, but the good old horsie gets a well-earned rest after the Fontbonne Horse Show.

An award dinner is held each year in recognition of progress in basketball, hockey, and track.

Fontbonne Staff Pauses for Identification



Evelyn Numainville, Barbara Raupp, Betty Higgins,
Rosemary Haward, Aleen Block.

STAFF

ROSEMARY HAWARD
Editor

ALEEN BLOCK
Photo Editor

BETTY HIGGINS
Feature Editor

BARBARA RAUPP
Business Manager

DOROTHY BUSSMANN
Advertising Manager



M. V. Richard, B. Raupp, R. Haward, A. Block, D. Barada, L. Flynt, M. R. Wahlert.

AND here it is! Your book. May it do as much to make a happy ending for the school year as do graduation, the Spring parties, or the traditional Shakespearean play. *The 1941 Fontbonne* attempts to give a true picturization of the college year, to treasure memories in its pages, to arouse an occasional "Do you remember when . . ." in years to come.

The Staff pauses to mop weary brows. Meeting deadlines for the printer and engraver, collecting advertising and balancing budgets have added temporary lines to their faces. (Hush! So it WAS a lot of fun!)

Station Identifications tell us that through the theme of radio the activities of the student body, faculty, and administration have been sent over the air waves in an effort not to present a record of college life but of college living!

The Font Celebrates Fifteenth Year

THIS is not a fifteen minute intermission, but *The Font* has been published for as many years and the staff members certainly need an intermission!

Type! Type! Type! Watch the copy fly on wings of words the last minute before the deadline. But somehow, some way, *The Font* always gets to that famous boogey-man, the printer.

Not only is our school paper an outlet for Shirley La Hurley's treatises, but it is also the voice of the people, the oracle, or otherwise.

Name it and you can have it! *The Font* belongs to various press associations, including the Associated Collegiate Press and the Catholic School Press Association.



First row: Betty Higgins, Mary Tracy, Dorothy Foerster, Evelyn Hurley, Rosemary Britt, Rosemary Quirk. Second Row: Ann Mapel, Frances Dlugon, Katherine Hernan, Rosemary Hayden, Audrey Murphy, Betty Boll, Mary Virginia Richard, Mary Concannon, Evelyn Numainville, Aleen Block, Barbara Raupp.

STAFF

EVELYN HURLEY

Managing Editor

BETTY HIGGINS

City Editor

ALEEN BLOCK

Business Manager

MARY TRACY

Circulation Manager

MARY CONCANNON

Literary Editor

MARY VIRGINIA RICHARD

Exchange Editor



La Hurley spends a hard day at the office.

Footlights Club Scores With "Brief Music"



First Row: P. Luce, P. Duggan, P. Burke, R. Murphy. Second Row: R. Mormino, M. Concannon, R. Hayden, M. Tracy, B. Gidley, E. Hurley. Third Row: R. McNamara, S. Nachtmann, P. McCarthy, L. LaBarge, E. Wright, A. Sawyers, J. Simon, M. Wahlert, R. Ward, A. Murphy.



from left, Mary Tracy, Rosemary Haward, Rosemary Hayden, Mary Concannon.

OFFICERS

ROSEMARY HAYDEN	<i>President</i>
MARY CONCANNON	<i>Vice-President</i>
ROSEMARY HAWARD	<i>Secretary</i>
MARY TRACY	<i>Treasurer</i>

IF YOU are a potential actress, playwright, or just a second balcony first nighter, then pay attention to the Footlights Club! This active group is the one to foster any histrionic ambitions which might be straying around the campus.

The club's annual fall presentation was Emmet Lavery's "Brief Music"—a rollicking, collegiate comedy, which had its audience rolling in the aisles—scoring an instant success.

The Footlighters become playgoers when a show comes to town, sponsoring group attendance of such plays as "The Philadelphia Story" and "Twelfth Night." This interest in contemporary drama and dramatists is also developed at club meetings, during which reviews and discussions come under the spotlight, helping to bring Broadway to Fontbonne.

During Commencement Week "A Midsummer's Night Dream" was presented in the outdoor theater.

French Club Holds Garden Party

PARLEZ-VOUS Francais? That's an easy question to answer if you are a member of The French Club. This group assures skill in speaking French by conducting its meetings in French! The fun in the club complements the work in the classroom, affording a closer relationship between the two.

Gay young Fontbonnettes strolled down the Rue de Paix on a shopping tour—a purely imaginative affair, to be sure, but amazingly helpful for the members' vocabularies. On another occasion they put on the masks of drama and enacted scenes from the plays of Molière. Then again these versatile mademoiselles became proficient in knowledge of the customs and habits of the French people.

The club's year closed with a garden party, held in the sunken garden behind Ryan Hall, a party with loads of French—and loads of fun!



Seated: R. Britt, E. Numainville, R. Quirk, A. Voegeli, A. Murphy, D. Frank, M. S. Echart, I. Boland, L. Colombo. Standing: Y. Cornu, M. Wahlert, M. Richard, H. Guyol, G. Duggan, R. Murphy, S. Nachtmann, D. Daniels, S. Francis, B. LaBarge.

OFFICERS

HELEN GUYOL

President

SHIRLEY FRANCIS

Vice-President

ROSEMARY BRITT

Secretary

LOUISE COLOMBO

Treasurer



Shirley Francis, Louise Colombo, Helen Guyol, Rosemary Britt.

Glee Club Sings Oratorio



First Row: Patricia Sweeney, Lee Maguire, Alice L. Sawyers, Marie Sansone, Evelyn Numainville, Geraldine Duggan, Mary A. Chandler, Alice Voegeli, Second Row: Adelaide Allen, Mary Sue Erhart, Suzanne Nachtmann, Peggy McCarthy.

OFFICERS

MARIE SANSONE
President

DOROTHY BAUMSTARK
Vice-President

ALICE CEJKA
Secretary-Librarian



THE FONTBONNE GLEE CLUB

WHY is the Den so bare every Monday, Wednesday and Friday at 10:20? Walk within earshot of Fine Arts and you'll soon find out! It's the Fontbonne version of the Paulist choir.

Radio work has become second nature to the Glee Club now, since their performance of selections from Handel's oratorio, "The Messiah," at Christmas time. At a Yuletide recital the whole of Handel's work was given and the audience was singularly impressed by the beauty of the delivery. The club also cooperated with the city's Christmas Carol Association program.

Specialized programs are not the extent of the Glee Club's activities, for the members sing at the Masses on College Day, Baccalaureate and Commencement. During the first week in May the Glee Club presents its annual spring recital as a part of the Fontbonne music festival.

Home Economists Study For Careers

HERE'S one time the Home Economics Club wasn't sitting pretty! On pins and needles until Christmas time, so anxious were they to distribute the dresses they had made for needy families.

Following this, the fortunate club members turned glamorous "shocking pink" at Madame Elsa Schiaparelli's fashion show. Nutritionists, attention! We hope you didn't miss Dr. Elvecjohn of Wisconsin University speaking on the value of copper in iron nutrition.

Careers were not neglected, for Miss Ruth Kahn imparted some of her sage advice on women as dieticians, and "with an eye to the future," Miss Julia Coburn, executive in the Tobe-Coburn School of Fashion, spoke on "Fashion Careers."



First Row: M. A. Killion, K. Burke, M. Miller, G. Pandjiris, H. Dillon, D. Wells, H. Stiers, Second Row: M. Gibbons, R. Knaapen, M. A. Meistrell, M. Fassero, B. Higgins, I. Mansour, M. Sullivan, B. Schuh, A. Naumann. Third Row: K. McCullough, B. Knetzger, M. Manning, H. DeCoursey, C. Cafferata, M. Klecan, A. Bauer. Fourth Row: K. Pendergast, D. Rinderer, M. Lynch, R. Galanis, M. Leahy, C. Hederman, A. Ryan, A. Swanger, M. Bass, M. Meyer, P. Duggan, A. Blinzinger, M. Metzger.

OFFICERS

ISABELLE MANSOUR

President

MARY ELLEN SULLIVAN

Vice-President

BETTY HIGGINS

Secretary

MARGUERITE FASSERO

Treasurer



Isabelle Mansour, Betty Higgins, Marguerite Fassero.

International Relations Club Attends Convention



A. Cjeka, R. Duerr, D. Bussmann

OFFICERS

RUTH DUERR,
President

DOROTHY BUSSMANN,
Vice-President

ALICE CJEKA,
Secretary-Treasurer



M. A. Chandler, M. Lynch, D. Baumstark, A. Cjeka, R. Duerr, D. Bussmann, M. E. Flickinger,
H. Guyol, B. Gidley.

PSST! SIZZLE! The glorious noises peculiar to a steak fry greeted the first gathering of the International Relations Club.

The St. Louis University debating team was sponsored by the club in a debate on America's air force. Mary Alice Chandler and Ruth Duerr were given recognition in the *Catholic Family Monthly* by having papers on social problems published.

At a Mississippi Valley Regional Conference at Warrensburg, Fontbonne's representatives were: Ruth Duerr, who read a paper on "Economic Democracy"; Alice Cjeka, who gave a paper on "Political Democracy"; and Dorothy Bussmann. The members were accompanied on the trip by Mr. Clemens, faculty adviser.

The International Relations Club is affiliated with the Catholic Association for International Peace and the Carnegie Foundation for International Peace.

Phi Beta Chi: Science and Styles

PHI BETA CHI can be doubly proud. Besides having the distinction of being the first club organized at Fontbonne it is a member of the Missouri Academy of Science. At the annual convention of this M. A. S., 1941, Dorothy Baumstark informed the learned gathering of the relation of hormones to growth. (See Baumpy for details!)

And that isn't all—they are also "fashion fiends" since their style show this spring, which was given to purchase a showcase to lodge the valuable scientific collection originated by the late Sister Leonilla, was an outstanding success.

Freshmen displaying unusual talents in the field of science are honored for outstanding work, orchids this year being tossed to Mary Sue Erhart, Biology, and Grace Noonan, Chemistry.



Seated: M. P. Hallinan, H. Kleir, M. R. Wahlert, L. Flynt, D. Baumstark, M. Riedle. Standing: I. Mansour, L. Klaus, D. Schulte, A. Murphy, J. Duddy, S. Muller, M. Mosberger.

OFFICERS

HELEN KLEIR
President

DOROTHY BAUMSTARK
Vice-President

MARY RITA WAHLERT
Secretary

LORAIN FLYNT
Treasurer



Loraine Flynt, Dorothy Baumstark, Mary R. Wahlert.

Poetry Club Studies Contemporaries



First Row: D. Barada, I. Boland, A. Cejka, A. Murphy, M. Tracy. Second Row: M. Costello, M. Marlowe, M. Reid, M. Sansone, O. Baer, E. Numainville, A. Sawyers, R. Hayden, L. LaBarge. Third Row: A. Voegli, K. Burke, S. Maestro, M. Richard, B. Raupp, A. Block, A. Allen, E. Hurley, M. Concannon. Fourth Row: V. Forward, S. Porbeck, K. McCullough.



Dorothy Barada, Audrey Murphy,
Alice Cejka, Irene Boland.

OFFICERS

ALICE CEJKA *President*
 IRENE BOLAND *Vice-President*
 AUDREY MURPHY *Secretary*
 DOROTHY BARADA *Corresponding Secretary*
 MARY ALICE ROCHE *Treasurer*

AND what of the college literary circle? Ah, that is the Poetry Club, nationally affiliated with the Catholic Poetry Society of America. Here college girls throw off their cloak of casualness and surprise one another with original poetry, and those less talented become better acquainted with the world's poets.

At the monthly meetings of the Poetry Club, a modern poet, his life and work, are discussed. Alfred Noyes, Louise Guiney, and Vera Marie Tracy were among those studied this year. Particular interest is paid to Catholic poets and poetry.

Press Club Promotes Benefits and Banquets

DO they look as if they want to sell you something? They started out that way early in the year when they held a benefit with a set of luggage as the grand prize, no doubt with an eye to capturing it for their own use, for very soon after that they started traveling! Publication representatives spent a worthwhile week-end at the Associated Collegiate Press Convention in Detroit, Michigan, getting tips for the yearbook and school paper for this year.

They learned what to expect when they launch their journalistic careers when Mr. Daniel Forrestal spoke at the February Meeting.

Always the saleswomen, those press and publicity agents held another benefit in the Spring with \$50.00 for the WINNAH.

Come May, they turned their thoughts from print to food and they held one grand banquet—"a-la-Press-Room."



THE PRESS CLUB

Seated: D. Barada, A. Block, B. Higgins. Second Row: A. Mapel, F. Dlugon, R. Britt, P. McCarthy, B. Raupp, A. Murphy, M. Richard, K. Hernan, G. Duggan, D. Foerster, A. Bauer, M. Conannon, L. Colombo, H. Guyol, M. Wahlert, R. Ward, E. Hurley, H. Dillon. Third Row: E. Numainville, R. Hayden, M. Tracy, D. Rinderer, R. Quirk, D. Bussmann, L. Flynt, G. Pandjiris, B. Boll.

OFFICERS

ALEEN BLOCK
President

DOROTHY BARADA
Vice-President

BETTY HIGGINS
Secretary-Treasurer



Aleen Block, Betty Higgins, Dorothy Barada

Resident Students Live and Love It



Ruth Duerr, Rosemary Haward, Mary E. Flickinger,
Lee Maguire, Dorothy Baumstark.

OFFICERS

DOROTHY BAUMSTARK

President

MARY ELLEN FLICKINGER

Vice-President

MARY MARGARET LYNCH

Secretary

ROSEMARY HAWARD

Treasurer



Resident Students Have Fun in the Den

SISTERS under the skin are these, and truly said, for the Resident Student's Association is not a matter of "the minutes of the last meeting" or "this meeting will be adjourned." Rather it is made up of endless bridge games, "cramming" for exams with an understanding roommate, inevitable borrowing and lending of what-you-needs, sharing the major part of daily life with half a hundred others. It is knowing the real meaning of the 9:30 A. M. call to "Mail's out," anxious waiting for the fifteenth of the month and allowance day, Saturday sojourns to town, and delicious anticipation of "two more days and we go home."

En masse the Resident Students turn out for picnics in the fall, pre-Christmas parties, formal birthday dinners, and they climax their social year with a formal banquet at a St. Louis country club.

Sigma Beta Mu Adds Music Equipment

“D A DUM, te dah da dum”—this isn’t baby’s first cute saying; it’s just a sample of the sounds that often are heard from first floor Fine Arts when Sigma Beta Mu meets.

It is customary for the club to sponsor musical programs of an outstanding nature. This year, shouts of “Encore!” greeted the ’cello and harp recital of Mme. Graziella Pompari and Pasquale de Conto, guest artists appearing under the auspices of Sigma Beta Mu.

Each club year witnesses new additions to the music department’s store of equipment, symphony albums and records, and books. This constant improvement is a concrete example of the purpose of the club, that of becoming better acquainted with music and with those who look upon it as a major interest.



First Row: L. Maguire, A. Voegeli, M. Sansone, A. Allen, M. E. Flickinger, B. Gidley, E. Numainville, A. Cejka, G. Duggan, D. Baumstark, B. Sturrock. Second Row: L. Slaughter, R. Mormino, V. Forward, M. A. Chandler, M. Bussmann, L. Ash, A. Sawyers, M. Riedel, M. Costello, R. Duerr, A. Pratt, M. Marlowe.

OFFICERS

LEE MAGUIRE
President

ALICE VOEGELI
Vice-President

DOROTHY BAUMSTARK
Secretary

MARIE SANSONE
Treasurer



Dorothy Baumstark, Lee Maguire, Alice Voegeli, Marie Sansone.

Sodality Sponsors Christmas Bundle Drive



Alice Voegeli, Geraldine Duggan, Dorothy Baumstark

OFFICERS

GERALDINE DUGGAN
Prelect

ALICE VOEGELI
Vice-Prelect

DOROTHY BAUMSTARK
Secretary-Treasurer



First Row: kneeling—D. Baumstark, G. Duggan, A. Voegeli. Second Row: kneeling—E. Wright, B. Boll, A. Murphy, B. Murphy, L. Flynt, M. Sansone. Third Row: standing—A. L. Sawyers, M. V. Richard, A. Cejka, B. La Barge, M. R. Wahlert.

PLANNING the spiritual activities at Fontbonne, the Sodality is a very active organization. Its motto, "To Jesus through Mary," is ever remembered and devotions such as the Guard of Honor on First Friday and the Living Rosary are reflections of the living force of this ejaculation.

At the beginning of the year, the freshmen were introduced to Sodality life with a party. A bundle drive for Christmas baskets was carried out with gratifying results. In February, the Sodality played hostess at a Valentine party to St. Joseph's high school for negroes.

As a climax to an outstanding year for the Sodality, May Day was an inspiring sight as our queen, Geraldine Duggan, crowned the Blessed Mother, Queen of the May.

Council Initiates Fathers' Banquet



Top Row: Helen Stiers, Geraldine Duggan, Barbara Raupp, Dorothy Baumstark, Aleen Block,
Rosemary Murphy, Mary Concannon. Bottom Row: Marie Sansone, Rosemary Hayden, Betty
La Barge, Helen Guyol.

WHAT goes on behind closed doors at the meetings of the Student Council? The majority of the students couldn't tell you, but they are certainly qualified to vouch for the results of these secret meetings.

With what jealous concern the Council guards the administration of College Day! Realizing the importance of this traditional day, this organization exerted all its energy to make it the pleasant memory that it is.

"Welcome, Dads!" Will anyone ever forget that greeting! Undoubtedly one of the highlights of the year, the Father-Daughter Banquet was the exclusive undertaking of the Student Council. The beams of many a father's face were equalled only by the smiles of their daughters.

Tradition—administration, these words spell the thought behind the Student Council.

OFFICERS

BETTY ANNE LaBARGE, *President*

ROSEMARY HAYDEN, *Vice-President*

HELEN GUYOL, *Secretary*

MARIE SANSONE, *Treasurer*

Las Teresianas Bud in April



Standing: L. O'Connell, V. Sheehan, G. Neaf, V. Carey, P. Sweeney, J. Broe, K. Carroll, P. Cuddy.

Seated: H. Sabadell, E. Wright, R. Smith.

NEWEST of the clubs at Fontbonne is Las Teresianas, organized in April of this year. The embryonic stage was passed quickly and this club was given a permanent position among the other organizations with the presentation of a Spanish program May 12. Such success attended this that Las Teresianas resolved to make this program an annual affair.

OFFICERS

LUCILLE O'CONNELL

President

HENRIETTA SABADELL

Vice-President

VIRGINIA SHEEHAN

Secretary-Treasurer

The club was begun with the immediate aim of creating a more fervent appreciation of the Spanish language, and through this understanding render an abiding atmosphere of friendship between the United States and the South American countries.

Honors, 1940-1941

Dorothy Baumstark, Magna Cum Laude, Kappa Gamma Phi

Alice Cejka, Magna Cum Laude, Kappa Gamma Phi

Geraldine Duggan, Magna Cum Laude, Kappa Gamma Phi

Alice Voegeli, Magna Cum Laude

Isabelle Mansour, Cum Laude

Phi Beta Chi Awards

Grace Noonan '44, Chemistry

Marv Sue Erhart '44, Biology

Who's Who

Dorothy Baumstark

Aleen Block

Dorothy Bussmann

Mary Concannon

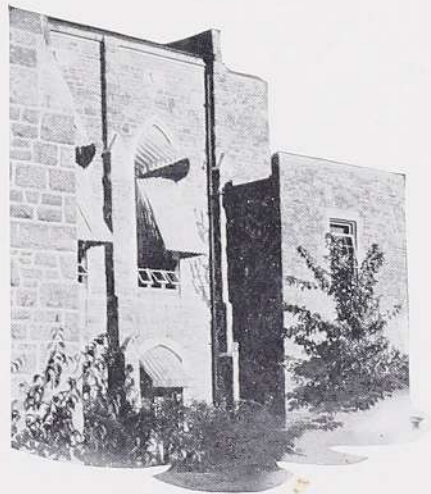
Ruth Duerr

Betty La Barge

Helen Stiers

Mary Tracy

Alice Voegeli



Chapel View from West Campus

FEATURES

of the NETWORK



SEPTEMBER

- 17 Freshman Week Begins
- 18 Registration
- 24 Sodality Party
- 25 Senior Tea for Freshmen
- 26 Resident Students' Picnic
- 30 Senior Assembly Program

OCTOBER

- 2 Faculty Tea
- 4 Mass of the Holy Ghost
- 7 Robert Cowles Dance Demonstration
- Sophomore-Freshman Party
- 11 Resident Student Party
- 15 College Day
- St. Louis University Reception
- 18 Junior Roller Skating Party
- 21 Publication Day Assembly
- Home Economics Club Initiation
- 25 Junior English Tests

NOVEMBER

- 1 All Saints' Day, Holiday
- 2 Homecoming
- 4 Press Club Luggage Raffle
- 7-9 ACP Convention in Detroit
- 11 Mid-semester Exams
- 18 *Brief Music*
- 21 Thanksgiving Day
- 22 Freshman Party at Congress
- 23 Radio Roundtable on Undset
- 25 Voice and Music Assembly
- Badminton Demonstration
- 27 Press Club Hears Mr. Rector

DECEMBER

- 4 Sigrid Undset Lecture
- 11 Footlights Club Initiation
- 13 Sophomore Tea
- 17 Sodality Christmas Party
- 18 Christmas Recess Begins
- 21 Alumnae Baby Party

FEBRUARY

- 3 Junior Formal Dinner
- 11 Miss Ruth Kahn Speaks to Home Ec. Club
- 14 Sodality Party at St. Joseph's School
- 17-24 Vocation Week
- 19 Father-Daughter Banquet
- 20 Delta Phi Dinner at Town Hall
- 23 Press Club Speaker, Daniel Forrestall

JANUARY

- 7 Classes Resumed
- 9 Freshman Assembly
- 13 Girl Scout Lecture
- 21 Dr. Greenwood's Lecture
- 23-27 Mid Year Exams
- 28-30 Retreat
- 31 Registration
- Junior Class Bridge Party

MARCH

- 3 Delta Phi Bohemian Supper
- 5-13 Teas for High School Seniors
- 10 De Conto-Pompari Recital
- 19 St. Joseph's Day, Holiday
- 24 Alice Voegeli's Music Recital
- 27 Phi Beta Chi's Fashion Show
- 27-28 I. R. C. Goes to Warrensburg
- 31 Sodality Play in Assembly

MAY

- 4-10 Music Week
- 6 Press Club Dinner
- 12 Spanish Club Assembly
- 13 May Day
- 14 Rosemary Haward's Recital
- French Club Garden Party
- 18 Alumnae Breakfast for Seniors
- 20 Comprehensive Examinations
- 21 Mary Tracy's Aquacade
- 22 Joint Picnic for Seniors
- 23-24 Tennis Tournament
- 25 Footlights' Club Breakfast
- 26 Class Day
- 27-29 Exams

APRIL

- 2 Rosemary Hayden's Dramatic Recital
- 3 Hair Stylist at Home Ec. Meeting
- 9 Easter Holidays Begin
- 14 Classes Resumed
- Better Business Bureau Lecture
- 16 Mary Concannon's Dramatic Recital
- 17 E. Robert Schmitz, Pianist
- 17-19 Science Convention at Columbia
- 18-19 Horse Show
- 21 Trip and Spring Vacation
- 23 Footlights' Club Sees *Twelfth Night*
- 26 Theses Due in Dean's Office
- 27 Alumnae Open House

JUNE

- 1 Baccalaureate Sunday
- 2 Faculty Banquet
- 3 Commencement at St. Louis U.
- 4 Commencement

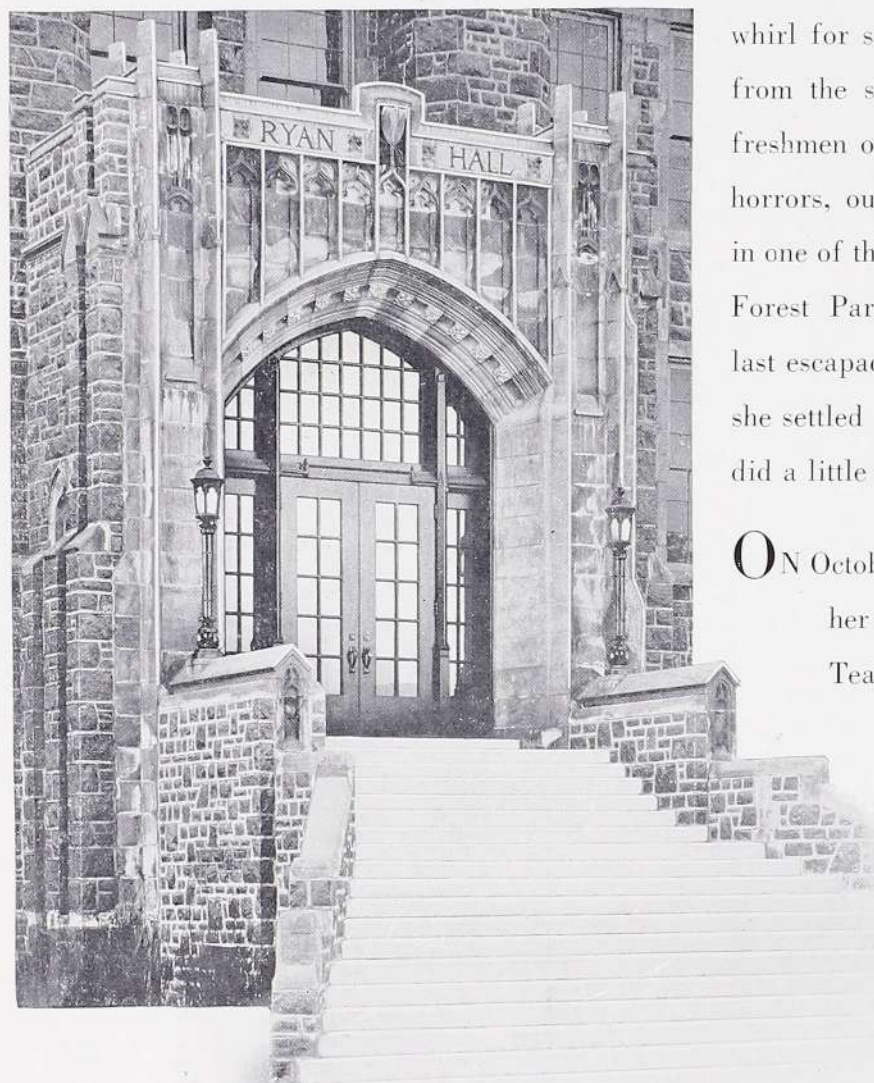
OPENING RUSH FADES INTO PEACE

FOR whom did the bell toll in September of 1940? Why, Fannie Fontbonne, of course! She arrived, pert and chic, on the sixteenth for Freshman Orientation Week—but she disarrayed many a plastered curl in trying to map out her

schedule on Registration Day, September eighteenth. However, Fannie stopped frowning long enough to smile and thank the girls in the Sodality for the invitation to their party the night of the twenty-fourth.

THIS was only the beginning of the social whirl for she managed to sneak a few cakes from the seniors' table at their tea for the freshmen on the twenty-fifth. And, horror of horrors, our ideal practically buried herself in one of the baskets at the boarders' picnic in Forest Park, September twenty-sixth! This last escapade proved too much for Fannie, so she settled back for the rest of the month and did a little studying.

ON October second, a demure Fannie put on her best bib and tucker for the Faculty Tea that afternoon. For best results at

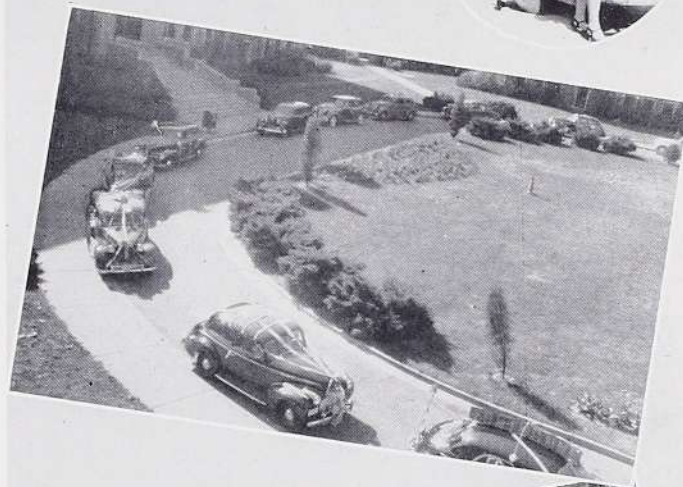
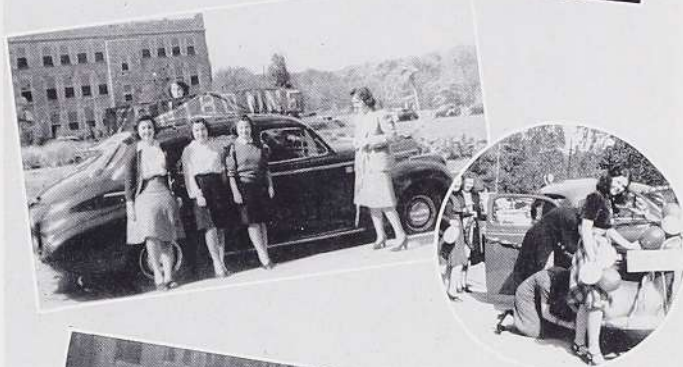
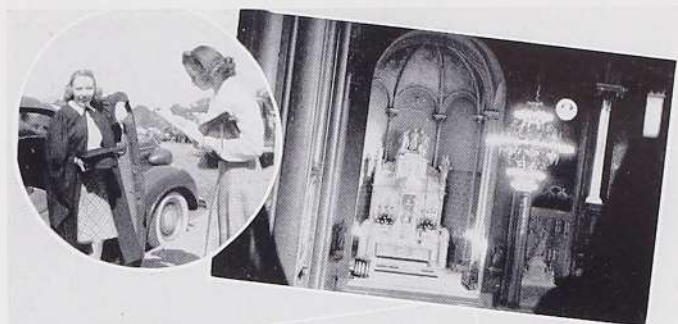


Looking up the steps
To the
Administration
Building

FACE OF COLLEGE DAY

the next tea, she proposes a card with her name printed on it to flash at each faculty member as she passes by. Did you see her sitting in the first pew at the Mass of the Holy Ghost on the fourth? What a nice way to start her spiritual year! Turning to her less exalted qualities, she twisted a mean wrist as a spaghetti twirler at the sophomore party for the freshmen, October seventh.

WHILE envious day students stayed at home and read a book on the eleventh, Fannie had the time of her young life at the party for the resident students in Fine Arts parlor. But her rabbit's foot failed her on College Day, and she pouted because Susanne Mueller won the prize for the best-decorated car. And then she had to share honors with the Corporate Colleges at St. Louis University's reception the same night, October fifteenth. But Fannie's newly acquired dignity was soon cast aside for some good old-fashioned fun at the juniors' roller skating party, October eighteenth. You may not believe it, but she didn't fall once!



Top: Aleen Block, photo editor, checks photos with Evelyn Hurley; Chapel at Carondelet.

Second: Relaxing after dressing a car; Balloons, streamers, a car, and Pat Duggan.

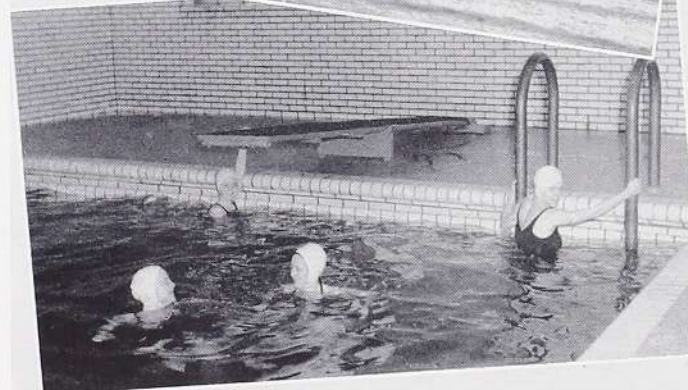
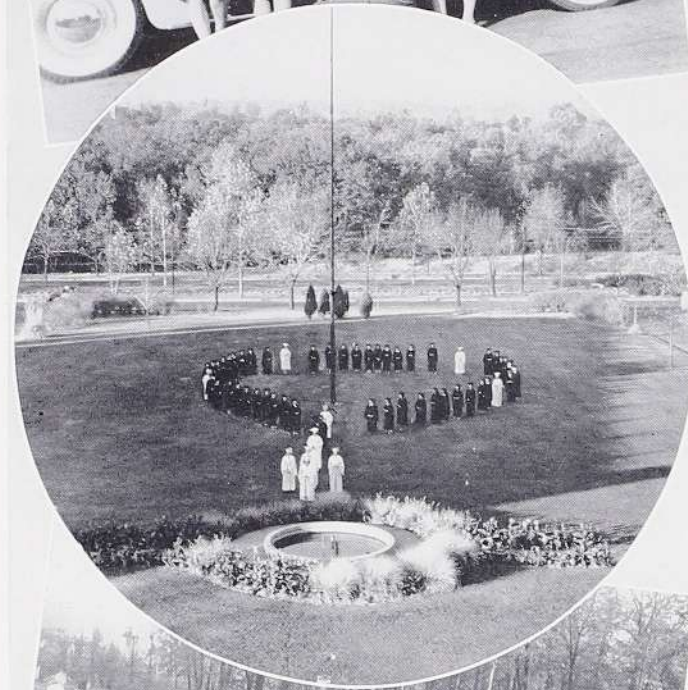
Third: The procession lining up in the drive.

Fourth: Mary Tracy, Helen Dillon and Betty Murphy, a la mellow-dramer.

PUBLICATIONS DAY

IN assembly the following Monday, October twenty-first, Fannie learned all the why and wherefore of *The Font* and *The Fontbonne* at a Publications Day program. Burning with zeal as a reporter, she covered the story of the initiation of the new Home Economics Club members that night and didn't miss a thing, not even the impressive candles or the carnations that each new member received. But—woe, her joys were short-lived for she worried along with the juniors in their English tests on the twenty-fifth, and don't think she didn't burn the midnight oil studying with the rest of them! This auspicious day satisfied her craving for action for some time, so she sailed serenely into November.

BANG! The second day, things started happening again! What could be more fun than Homecoming? There she was "on the spot," waving her tally and anxiously waiting to start her bridge game in the afternoon. Do you think she left after that? Oh, no! She stayed with the rest of us for that wonderful Homecoming supper which ought to hold us until next year. Memories of Detroit and Fannie competing with Shirley La Hurley at the A. C. P. convention! About November eleventh, her face acquired a haggard look as she submitted to the ordeal of mid-semester examinations.



Top: Virginia Forward, Patricia Luce, Judy Meistrell, Helen de Coursey, Laura Slaughter, and Mary Ann Meistrell (sitting) pose obligingly before a convertible.

Second: The living Rosary heightens interest in October.

Third: Make that goal!

Fourth: New version of the old swimmin' hole.

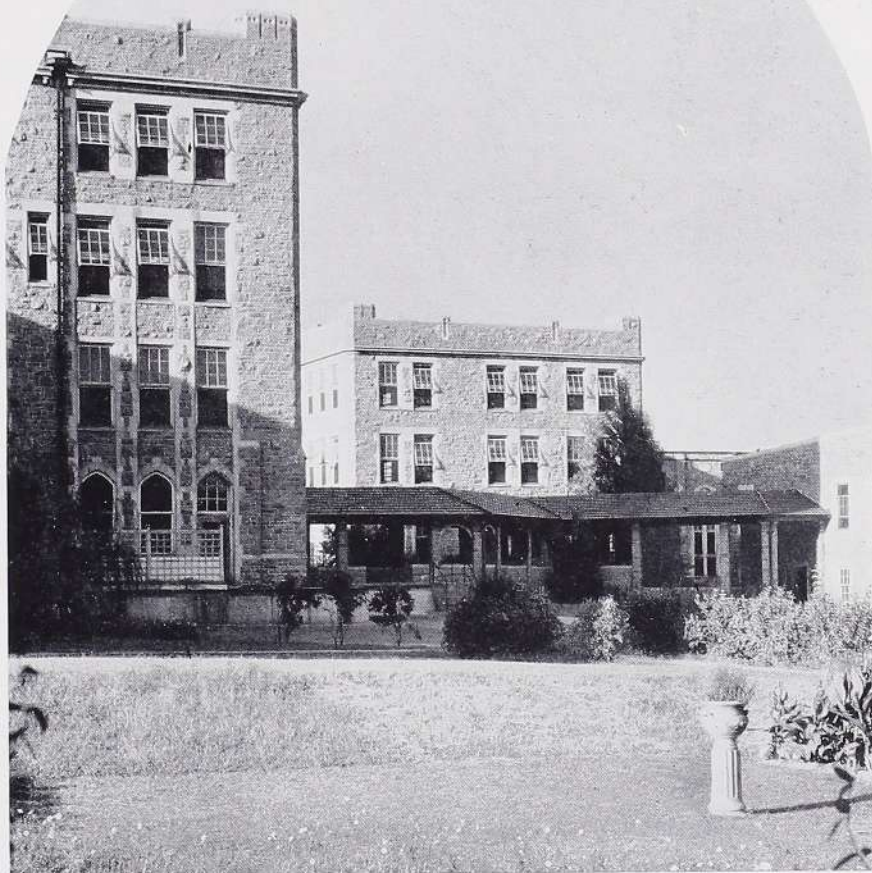
AND TESTS YIELD STAGE TO "BRIEF MUSIC"

SLY little Fannie sneaked in on some of the rehearsals for "Brief Music" and, believe me, when the eighteenth rolled around, she wasn't sitting on her hands! Not content with being a "first nighter," she went back a second time in case she missed some of those hilarious lines and walked away in a daze, muttering verbal laurels for the Misses McCarthy and Concannon. This year, Fannie let her democratic nature get

the best of her as she celebrated Thanksgiving on the twenty-first, but being a peacemaker, she had a thankful look on her face the Republican Turkey Day. The class of '44 entertained Mlle. Fannie at a party at the Congress on Friday. Still contemplating journalism, she

attended the Press Club November twenty-seventh and listened to the advice of Mr.

John F. Rector on careers for women in journalism.



The east arcade as seen from the sunken garden

SIGRID UNDSET'S

DECEMBER is a big month in anybody's life, but to Fannie Fontbonne it was especially so this year. The fourth rolled around very quickly in the midst of preparations for the arrival of Madame Sigrid Undset, the famous novelist and Nobel Prize winner. Goodness knows, we could have used a little peace for poor Fannie was so confused and excited that she barely found her breath to squawk out a "thank you" to Madame Undset. It took her almost two weeks to take down all the posters and circulars announcing Madame Undset's visit, and she finished just in time to attend the initiation of Footlights Club members on December eleventh.

FRIDAY, December thirteenth, was not unlucky for the sophomores for this was the day they selected for their tea to help the Sodality in their charity work. Fannie was quite impressed with the flowers and, above all—a rug on the floor of the Den!

ON the seventeenth, she was delighted and inspired by the Glee Club's rendition of Handel's "The Messiah" and following this Christmas program, she had great fun pretending that she didn't know Audrey Murphy was Santa Claus at the Sodality Christmas party. This wasn't enough—for Fannie



Top: Madame Sigrid Undset; Beauty over the rail.

Second: Dolores Schulte and Lenora Klaus, playing or working?

Third: Reception for Sigrid Undset.

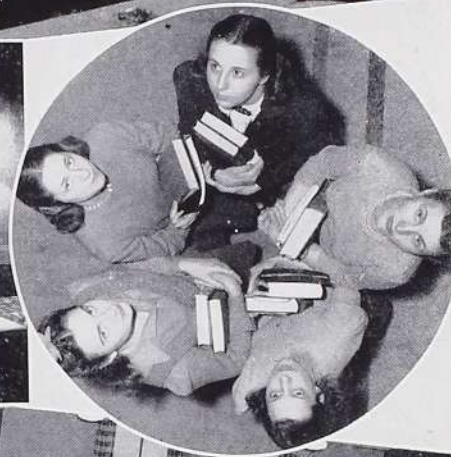
Fourth: First Nighting "Brief Music."

LECTURE MAKES DECEMBER A BANNER MONTH

had great sport balancing pretzels on a stick, serving the refreshments. Ah, joy! A well-earned (?) vacation began the eighteenth and she made all sorts of resolutions for catching up on her work during the holidays. And leave it to the detective, Miss Fannie, to discover the Alumnae Baby Party on the twenty-first. They thought all the current Fontbonne belles were home on vacation, but not Fannie, for she could not break her record of attending every school function at this late date.

FULL of resolutions to be a model student for the whole year, Fannie attended every one of her classes the first day of the new semester, January seventh. For a while she had a terrible time remembering to write "1941" on her papers. Then, Fannie spent about a week tearing her hair out because she couldn't sell any of her books. Why do they have to change books, anyway?

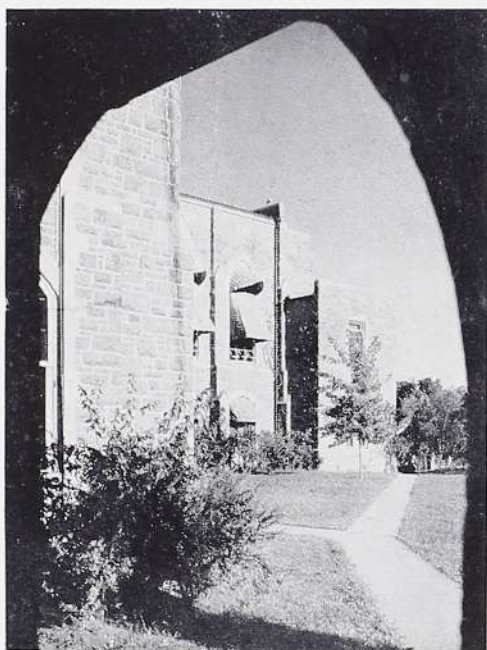
ON the thirteenth, at a lecture in assembly, Fannie learned all she had missed by not being a Girl Scout. After this she thought it was pretty much fun to be young until



Top: A Home Economics Class.
Second: Mary Teresa Klecan takes time out; The Beauty Circle.
Third: Sophomores Silver Teasing.
Fourth: Doctor Greenwood chats with Marie Sansone, Helen Stiers, Helen Gayol, Rosemary Hayden, and Betty LaBarge.

WE DIDN'T MISS THE SOUVENIRS...

January twenty-first, when she heard Dr. Greenwood tell of the problems of youth in the present crisis. However, after hearing letters from some of his students in England,



The Chapel as seen from the west arcade.

she was thankful that all her dates weren't held in bombproof shelters and decided that she was very lucky, after all. Her outlook changed somewhat with the coming of mid-year examinations the twenty-third, starting four long days of torture. If only she had studied just a little harder!

FANNIE had plenty of time for such reflections for the next three days were Retreat, and such a going over as her soul received! These last few days of January were full of activity. Retreat closed on the morning of the thirty-first and from then on, she went from one thing to another. Registration for the new semester was the same day and Fannie managed to keep her temper this time because the effects of Retreat were still with her. Oh, the life of a debutante! This was some day for Miss Fontbonne; she also attended the card party given by the juniors that same afternoon. Well, what if she did trump her partner's ace? After all, it was only the second time she had played cards in ages!

AT last—the moment supreme! It took ages to the third of February, but it came all too quickly for one person, Aleen Block. However, Aleen managed to relax for a few moments and smile with Fannie at the splendor of the Junior Formal Dinner. Fannie was a pretty good sport about the souvenirs. After all, you can't have everything!

.. IT WAS A LOVELY EVENING!

ON February eleventh at a meeting of the Home Economics Club, Miss Fontbonne heard Miss Ruth Kahn on the advantages of being a dietician. She was all set to run right over to St. Mary's Hospital but decided to wait several days for Vocation Week. For a temporary vocation, Fannie chose the enjoyable one of escorting her Dad to the Father-Daughter banquet and liked it so well that she wants to do it every year.

THE evening of the twentieth, Fannie found herself in the midst of a select group, the members of Delta Phi, at a dinner at Town Hall. Over their coffee cups they voted on new members of the sorority. Fannie's attention again turned to journalism as Mr. Daniel J. Forrestall of the *St. Louis Globe-Democrat* talked on pictorial journalism at a meeting of the Press Club, February twenty-fourth.

HUNDREDS of high school seniors were Fannie Fontbonne's guests at a series of teas from March fifth to the thirteenth. Leave it to Fannie to take care of everyone though. One young lady fresh from the country consumed thirty-five of Fannie's dainty cookies and still had that scared look!



Top: Junior Class officers at formal banquet.
Second: The basketball team in action.
Third: The Sansones, LaBarges, and Haydens at the Father-Daughter Banquet.
Fourth: Any afternoon in the Cafeteria.

HORSE SHOW, CUBAN TRIP, RECITALS



Top: Freshman and Sophomore Tea for High Schools; Off they go to Cuba.
Second: They rode in the Horse Show.
Third: Queen Gerry Duggan and attendants for May Day.
Fourth: Pre-Exam business.

ON March tenth, Fannie slipped in at the DeConto-Pompari recital sponsored by the music department and then went back for more on the twenty-fourth when Alice Voegeli presented her music recital. On the twenty-seventh and twenty-eighth, Fannie turned social-minded along with Mr. Clemens, Ruth Duerr, Al Cejka and Dot Bussmann, and dashed over to Warrensburg, Missouri, for the International Relations Convention. Back to St. Louis she rushed to enjoy "In Life's Glad Morn," the Sodality play, starring Gerry Duggan.

FANNIE Playgoer shouted "Encore" April second, at Rosemary Hayden's presentation of "The Barrets of Wimpole Street," and, after a short time-out at Easter, roared with laughter at the antics of "The Rivals" a la Mary Concannon, April sixteenth. The next day Fannie, now quite the traveler, hustled off to Columbia to attend a meeting of the Missouri Academy of Science. She must be a dual personality though, because she was seen both nights at the Horse Show, the eighteenth and nineteenth.

FANNIE hated missing the Alumnae Open House, but she insisted on packing her bags and trotting off to Cuba for the Spring Tour. She returned after this glorious vacation definitely not in the mood for work, so

EXAMS, - - - PRELUDE TO TOMORROW!

from May fourth to the tenth, she witnessed an educational Music Week, taking time out the sixth for the Press Club dinner in Forest Park. May thirteenth, Fannie donned frills for May Day and was edified by the moving ceremony. On the fourteenth she attended the French Club garden party in the afternoon and watched "Rebecca" float across the stage in the evening at Rosemary Haward's collaboration with Daphne du Maurier on the same.

ON May eighteenth Fannie again ate well at the alumnae breakfast for the seniors, but she needed this nourishment, for the Comprehensive Exams on the twentieth already had her shaking in her boots. A waterside seat for Mary Tracy's Aquacade on the twenty-first of May whetted her appetite for the Freshman-

Sophomore all-school picnic for the seniors on the twenty-second.

THE first of June, Fannie absorbed the sage words of the Baccalaureate address, saying a fervent prayer that her class ivy wouldn't die. The next night at the faculty banquet, Fannie applauded graciously when the award was given to the outstanding student of the year. June third, Fannie was one out of many at commencement at St. Louis University, and then relaxed long enough from the academic strain to enjoy "A Midsummer Night's Dream." June fourth was the Great Day—the day that was four years in arriving, taking ages to come while we waited, but staying too briefly when it finally arrived. Fannie proclaims that she would like to come back and do it over — and we wouldn't be surprised if she does!



Baccalaureate in the Chapel.

S
T
A
N
D

B
Y

F
O
R



*Try Zumph
For umph!*

Calling F. C. . . . Calling F. C. . . . Come in, F. C.

*Here's Wift . . .
It's a gift!*

A n n o u n c e m e n t

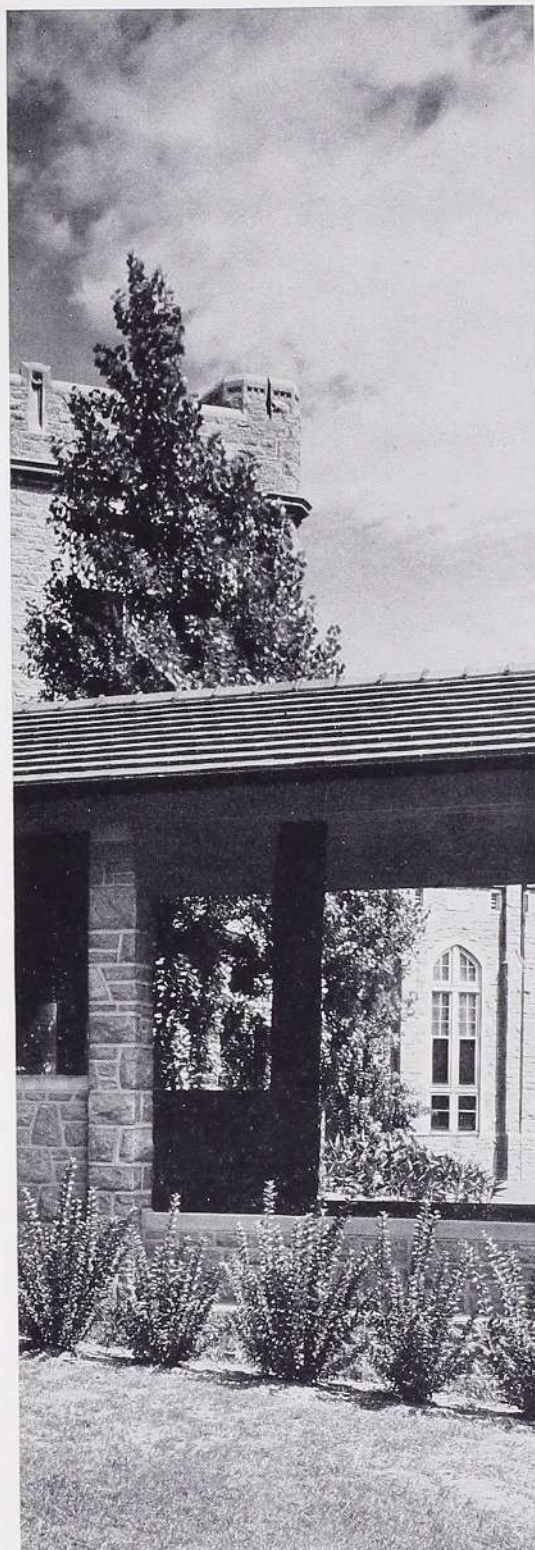
Have you lost your man in the draft?
Send today for a package of Waft!

Six lessons from
Shirley la Hurley

Attention, Glamour Girls!
Hamburgers, 10 for a penny!

Beauty's first line of defense—
Keep your love in the present tense—
Send for Dreem-O, price—ten cents!

Girls! Watch your men,
Wash your hair with Glen!



n a m e n t s

SPONSORS

Mr. Willis W. Benson

Miss Virginia L. Fuehlen

Dr. A. E. Block

Mr. Edward Griesedieck

Very Rev. Nicholas W. Brinkman

Miss Angela Hannagan

Mr. August A. Busch, Jr.

Mayor and Mrs. Alfred H. Kerth

Mr. and Mrs. A. J. Cejka

Mr. Jerome Kriegshauser

Mr. John J. Concannon

Mrs. Joseph E. Mucherman

Mrs. Arthur Donnelly

Mr. and Mrs. Alfred J. Noble

Mrs. Mark J. Dotzler

Mr. and Mrs. John Riley

Mayor and Mrs. Matt C. Fogerty

The Senior Class

Fontbonne Alumnae Association

Mr. and Mrs. Charles A. Shaw

Very Rev. Msgr. Leo J. Steck

Patrons

Miss Margaret Aird
Miss Eleanora A. Baer
Mr. and Mrs. John J. Barada
Miss Anneleise Bauer
Miss Dorothy Baumstark
Miss Alice Beffa
Miss Aleen Block
Miss Dorothy Bussmann
Mr. and Mrs. John Cafferata
Miss Helen Cahill
Mr. and Mrs. Alphonse H. Clemens
Mr. and Mrs. Anthony Colombo
Miss Hope Davis
Mr. and Mrs. Edward A. Dillon
Mr. and Mrs. Lawrence A. Duggan
Mrs. John Faust
The Fontbonne Cafeteria
Miss Faith Fricke
Mr. and Mrs. F. J. Guyol
Miss Helen Guyol
Mrs. Fred Haper
Miss Rosemary Haward
Miss Rosemary Hayden
Miss Gertrude M. Horgan
Mr. and Mrs. D. C. Hurley

Miss Evelyn Hurley
Miss Mary Ann Killion
Miss Betty King
Miss Mary Teresa Klecan
Miss Elouise Laumann
Miss Mary Margaret Lynch
Miss Ruth McNamara
Miss Virginia Mackey
Miss Eloise Matlock
The John L. Meier Motor Co.
Mr. and Mrs. William J. Miller
Miss Margaret Mary Nelson
Miss Evelyn Numainville
Mr. and Mrs. K. A. Pandjiris
Miss Catherine Pendergast
Mr. and Mrs. C. L. Raupp
Miss Mary Riedel
Miss Henrietta Sabadell
St. Anthony's High School
Miss Alice Lee Sawyers
Mr. J. L. Stevenson
Miss Mary Elizabeth Tracy
Mr. and Mrs. S. C. Tracy
Miss Mary Rita Wahlert
Miss Rosemary Ward



Fontbonne College . . .

- A Catholic Institution conducted by the Sisters of St. Joseph of Carondelet for the higher education of women.
- A Corporate College of St. Louis University and as such fully accredited by the North Central Association of Colleges and Secondary Schools, by the Association of American Colleges, and by the National Catholic Educational Association.
- A degree-granting institution empowered to grant the degrees of A.B., B.S., and B.S. in Home Economics.

» » Resident and Day Students « «

Address the Registrar

FONTBONNE COLLEGE

Wydown and Big Bend Blvds.

•

St. Louis, Missouri

ST. JOSEPH'S ACADEMY FONTBONNE

• *A Catholic High School for Girls* •



Affiliated with the National Catholic Educational Association; accredited by the University of Missouri and the North Central Association of Colleges and Secondary Schools, and officially approved by the State Board of Education of Missouri as a Four-Year Senior High School, Class A.

Conducted by the

SISTERS OF ST. JOSEPH OF CARONDELET

WYDOWN AND BIG BEND BOULEVARD

ST. LOUIS, MISSOURI

They're Homeward Bound!



Mary Teresa Klecan, Betty Murphy, Dorothy Zeigler, Helen Cahill, and Mary Lynch take time out from their studies for a quick week-end jaunt home — by way of the WABASH, of course. For smooth, efficient service and for safe, speedy travel, Fontbonne girls prefer . . .

The Wabash Railroad

The Delmar Station for Your Convenience



Jane Duddy, '42,
takes time off between
classes to enjoy a re-
freshing drink of

Double Cola

Bottled by the
RITZ BOTTLING CO.

CountrySide Florist



9800 Manchester

REpublic 1300

ELLIS DRUG CO.

7920 Kingsbury
at
Meremac

Give Your Eyes

the special care
this priceless pos-
session deserves

An authoritative booklet on the
Care of Eyes will be sent upon
request

... we served your grandparents

Erker's

610 Olive 518 N. Grand

GUILD OPTICIANS

RAMELKAMP'S

Fountain Service
and
Restaurant

COMPLETE MEALS
AND SANDWICHES
CURB SERVICE

7817 Clayton

PA. 9170

With Best Wishes

of the

W. F. B. Co.

with
COMPLIMENTS *of*
SENIOR
CLASS





THE PARKMOOR

ALL-CREAM ICE CREAM
Delicious SANDWICHES

McCaughen & Burr

FINE ARTS

Established 1860

1110a Locust St.

CENTRAL 1625

ST. LOUIS, MO.

CONSUMERS GROCERY

and

MEAT COMPANY

Eighth and Clark



Sanitone
by

CHAPMAN

A Real Beauty
Treatment for
Garments



Compliments
of
FRESHMAN CLASS

L. G. BALFOUR CO.

*Nationally Known Fraternity
and Sorority Jewelry*

- CLASS RINGS
- INVITATIONS
- DIPLOMAS
- MEDALS
- TROPHIES
- ATHLETIC AWARDS

Your "Balfour" Man

FRANK A. DOOLING

CENTRAL 1544

210 BOARD OF EDUCATION BUILDING
911 Locust St.

It's


SUNFREEZE
ICE CREAM

•
Jefferson 2522

4424 West Papin
•

"Glasses by Fisher"

Geo. D. Fisher Optical Co.

SAINT LOUIS

915 Locust Street 510 North Grand Blvd.
GARfield 1307 JEFFerson 5736

CANDID AND MOVIE CAMERAS AND
SUPPLIES

Compliments
of

**THOS. J. BLONG
PAINTING CO.**

3615 Page Blvd. FRanklin 2377

Compliments of the

**ADJUSTABLE
SHOE CO.**

20-24 Mezzanine

ARCADE BUILDING

Beauty Comes First at

**FORSYTHE BEAUTY
AND
CONTOUR SALON**
FORMERLY SUZANNE'S

*A Superior Service at
Budget Prices*

CAbany 8981 7718 Forsythe Blvd.

CLA-U-C SERVICE

CAbany 9249 7345 Forsythe

We Call and Deliver

CHARLES CURRY
Proprietor

ROBERT DOYLE
Manager

EMIL FREI, INC.

**JOHN H. McCARTHY
MONUMENT CO.**

4642 West Florissant Ave.
GOodfellow 0580

Quality Dairy Company, Inc.

4630 West Florissant Avenue

St. Louis, Mo.

"NONE BETTER" Products

MILK — CREAM — ICE CREAM — BUTTER
CHEESE

"Quality Products for Quality Folks"

GOODFELLOW 6000

GOODFELLOW 6001

KALETTA STATUARY CO.

Liturgically Correct Church Statuary

Altars . . . Church Furniture . . . Pews

Choir Halls . . . Draperies

Church Metal Ware . . . Furnishings

3715-21 California Avenue

St. Louis, Mo.

Selden Cooper Gift Shop

.

8015 Forsythe

AL THE TAILOR

Forsythe Cleaners and Tailors

CABany 9372

7335 Forsythe Blvd.

CABany 9336

7604 Wydown Blvd.

CABany 9418

624 North & South Rd.

CABany 8778

7354 Forsythe Blvd.

*University City, Mo., and
Clayton, Mo.*

ROBBINS JEWELRY CO.

324 Arcade Bldg.

8th and Olive, St. Louis

ST. LOUIS' MOST POPULAR
JEWELER



This Is the Place We Ride Our Horses

Agnes Menges, Mary Tracy, Dorothy Rinderer and
Betty LaBarge on mounts from

MISSOURI RIDING STABLES, INC.

Horses Rented, Boarded, and Trained

• *Riding Instructions by Competent Masters* •

A. L. PENDLETON, President

ROBT. V. HOGE, Manager

Covers
AND
Binding

FOR THE

1941 FONTBONNE

BY

Becktold Company

Olive at Beaumont

St. Louis, Mo.

Compliments
of

**A. H. DUDENHOEFFER
CANDY COMPANY**

2617 Gravois Ave.

LAclede 1825

Singer Sewing
Machine Company

•

823 Locust

ST. LOUIS, MISSOURI

Compliments
of the

JUNIOR CLASS



Compliments

of

SOPHOMORE CLASS

RUBICAM SCHOOL

offers

THOROUGH PREPARATION FOR SECRETARIAL,
STENOGRAPHIC, AND ACCOUNTING POSITIONS;
Placement Service without charge to Rubicam Graduates;
Summer Classes in Shorthand and Typewriting

DAY AND EVENING CLASSES
INDIVIDUAL AND GROUP INSTRUCTION

Three Conveniently Located Schools

4933 Delmar Boulevard -- Forest 3900 • 3469 S. Grand Boulevard -- LAclede 0440
7701 Forsythe Boulevard -- CAbany 4102

*Compliments
of*

SCHNEIDER
PRINTING
COMPANY



911 North Sixth Street
ST. LOUIS



"We Print THE FONT!"

For

L. C. Smith, Standard and Corona
Portable Typewriters
Standards and Silent Models

G. A. LIVINGSTONE
L. C. SMITH AND CORONA
TYPEWRITER, INC.

1108 Locust

MAin 3215

with

Best Wishes

from

A Friend

KERTH MOTOR CO.

Sales
and
Service



34 NORTH MERAMEC

PARKVIEW 8277

Phone **GARfield 6297**

Expert Optometrists and Opticians

Dr. Alois A. Winterer

Dr. George A. Winterer

Eyes Scientifically Examined and Glasses
Made to Correct All Defects of the Eye

202 N. Seventh

St. Louis, Mo.

for

Individually Styled
Coiffures . . .

Michael's Beauty Shop

21 Brentwood

Parkview 9112

**Goodfellow Lumber
Company**



5706 Natural Bridge

St. Louis, Mo.

BADER'S

*The House
of Quality*

Art Supplies

1112 Locust

St. Louis, Mo.

★ Tom Tlappek, Rena Lumini,
Homer Simpson, and Rose Tlappek
. . . in a foursome for dinner at
THE CANDLELIGHT HOUSE.

Famed for its cuisine and picturesque
surroundings, invariably for after the
show snacks, luncheon, and dinner the
Fontbonne girls choose



The CANDLELIGHT HOUSE

7800 CLAYTON ROAD

COMBS-DUVAL STUDIO

Creators of

DISTINCTIVE PORTRAITS



4482 WASHINGTON BOULEVARD

Franklin 1705



Another

BOOK BY
CENTRAL

Central Engraving Company

114 N. Seventh Street
ST. LOUIS, MISSOURI

GRIMES-JOYCE

of

KANSAS CITY

printed the

Fontbonne

for 1941

STEINWAY

CHICKERING • GEORGE STECK
STORY & CLARK and MUSETTE

PIANOS

Hammon Organ • Hammon Solovox

*Largest selection of Victor Records and
Masterpiece Albums in the Middle West*

AEOLIAN COMPANY of MISSOURI

W. P. CHRISLER—PRESIDENT

1004 OLIVE STREET

Compliments

of

A FRIEND

for

CATHOLIC INSTITUTION
BONDS

See

Dempsey-Tegler
and Co.

•

303-309 VICTORIA BUILDING

407 N. Eighth Street

St. Louis, Mo.

Compliments of

STANLEY WALLACH

PROSECUTING ATTORNEY

St. Louis County

Compliments of

HAWTHORN
COAL COMPANY

608 Arcade Bldg.

MAin 3050, 3051

*Ask Your
Grocer*

for

**PRINCESS
CRACKERS**

Please!

TOWN HALL *for Lunch!*



Rosemary Ward, Mary Rita
Wahlert, Evelyn Hurley, and
Aleen Block study a luncheon
menu at their favorite eating
place . . .

TOWN HALL

6736 Clayton Road

COMPLIMENTS

of

A FRIEND

*Best Wishes
from*

**PEACOCK
SHOE SHOP**

815 Locust Street

◆
KONCEN

MEAT

COMPANY
◆



The Kilgen HARMONIC ENSEMBLE

Compact in Size . . .

. . . Low in Price

A GENUINE PIPE ORGAN

In churches—large and small—Kilgen Organs furnish the voice of musical inspiration. For seven generations Kilgen Craftsmanship and ideals have been handed down from father to son until today the present firm builds the masterpiece of pipe organs.

And for the small church or chapel, the new Harmonic Ensemble is the ideal organ. Write for details and specifications.

The Kilgen Organ Company

4443 COOK AVE.

ST. LOUIS, MO.

Kilgen Organs

EUGENE R. KILGEN
President



MAX HESS
Chief Engineer

STUDENT DIRECTORY

1940-1941

A

ALLEN, Adelaide, New Madrid, Missouri
ASH, Lorraine, 308 North Forrest Street, Forrest City, Arkansas
AUBUCHON, Margaret Evelyn, 7225 Zephyr Place, Maplewood, Missouri

B

BAER, Olive, 1921 Virginia Avenue, St. Louis, Missouri
BARADA, Dorothy, 4998 Fairview, St. Louis, Missouri
BARRY, Marcella, 2022 East Warne, St. Louis, Missouri
BASS, Mary, 731 Westwood Drive, St. Louis, Missouri
BAUER, Anneliese, 7379 Pershing Avenue, University City, Missouri
BAUMSTARK, Dorothy, 1 Fairfield Drive, Arondale Estates, Georgia
BLINZINGER, Anita, 3512 Bomberger Avenue, St. Louis, Missouri
BLOCK, Aleen, 6820 Delmar Blvd., University City, Missouri
BOEVING, Marjorie, 946 Vine Street, Poplar Bluff, Missouri
BOLAND, Irene, 4061 St. Louis Avenue, St. Louis, Missouri
BOLL, Betty, 2834 Bartold Avenue, Maplewood, Missouri
BOURK, Mary Lou, 3234 Victor, Kansas City, Missouri
BRANDT, Mary Elizabeth, 4247 LaFayette, St. Louis, Missouri
BRITT, Rosemary, 5386 Ruskin Avenue, St. Louis, Missouri
BROE, Jacquelin Ann, 5023 Northland, St. Louis, Missouri
BURKE, Kathleen, 5246 Terry, St. Louis, Missouri
BURKE, Patricia, 4139 Camellia, St. Louis, Missouri
BUSSMANN, Dorothy, 11 Kingsbury Place, St. Louis, Missouri
BUSSMANN, Margaret, 11 Kingsbury Place, St. Louis, Missouri

C

CAFFERATA, Carlotta, 6853 Olive Street Road, University City
CAHILL, Helen, 2044 North 55th, Omaha, Nebraska
CALLAHAN, Jane, 3926 Dover Place, St. Louis, Missouri
CALLIER, Catherine, 1324 LeRoy, St. Louis, Missouri
CAPORAL, Gloria Nikki, 6656 Oakland Avenue, St. Louis, Missouri
CAREY, Veronica, 7048 Wise, St. Louis, Missouri
CARROLL, Kathleen, 4518 Lexington Avenue, St. Louis, Missouri
CASEY, Dorothy Ann, Potosi, Missouri
CATALDI, Mary, 4961 Columbia, St. Louis, Missouri
CEJKA, Alice, 5417 Rosa Avenue, St. Louis, Missouri
CHANDLER, Mary Alice, 1604 South Utica, Tulsa, Oklahoma
CLARIDGE, Marian, 3911 DeTanty, St. Louis, Missouri
COLOMBO, Louise, 1052 Hampton, St. Louis, Missouri
CONCANNON, Mary, 4648 Leduc, St. Louis, Missouri
CONDON, Laura, 1502 Washington Avenue, Greenville, Mississippi
CORNU, Yvonne, 1041 West Peachtree Street, N. E., Atlanta, Georgia
COSTELLO, Mary, 4123 North Capitol, Indianapolis, Indiana
CUDDY, Peggy, 5406 North Kingshighway, St. Louis, Missouri.

D

DANIEL, Rosemary, 2117 Walnut Street, Murphysboro, Illinois
DANIELS, Dorothy Jane, 247 Barton Avenue, Terre Haute, Indiana
DeCLERC, Georgene, 10 South Cedar Street, Sturgeon Bay, Wisconsin
DeCOURSEY, Helen, 628 Ohio Avenue, Kansas City, Kansas
DILLON, Helen, 6011 McPherson, St. Louis, Missouri
DLUGON, Frances, 800 Division Avenue, East St. Louis, Illinois
DOERING, Mary, 7038 Melrose Avenue, University City, Missouri

STUDENT DIRECTORY—Continued

DUDDY, Jane, 4866 Sacramento, St. Louis, Missouri
DUERR, Ruth, 404 East Ste. Marie, Perryville, Missouri
DUGGAN, Geraldine, 4108 Connecticut, St. Louis, Missouri
DUGGAN, Maria Patricia, 3841 Flora Place, St. Louis, Missouri

E

ERHART, Mary Sue, 494 Ridgeway, Little Rock, Arkansas

F

FASSERO, Marguerite, Central Avenue, Benld, Illinois
FLEMING, June, 7536 Hoover, St. Louis, Missouri
FLICKINGER, Mary Ellen, Greenfield, Iowa
FLYNT, Loraine, 1356 Lanier Blvd., N. E., Atlanta, Georgia
FOERSTER, Dorothy, 7267 Forsythe, University City, Missouri
FORWARD, Virginia, 1320 18th Avenue, So., Birmingham, Alabama
FRANCIS, Shirley, 7352 Pershing Avenue, St. Louis, Missouri
FRANK, Dorothy, 5651 Waterman, St. Louis, Missouri
FRICKE, Faith, 4096 Holly Hills, St. Louis, Missouri

G

GARDNER, Jane, 651 Glenridge, Clayton, Missouri
GALANIS, Rosemary, 4363 Beethoven, St. Louis, Missouri
GIBBONS, Mary Margaret, 5736 McPherson, St. Louis, Missouri
GIDLEY, Betty, 51 Main Street, Bonne Terre, Missouri
GIDLEY, Stephanie, 51 Main Street, Bonne Terre, Missouri
GODFREY, Bernice, 5033 Wren, St. Louis, Missouri
GRAHAM, Eleanore, 7510 Parkdale, Clayton, Missouri
GROSSE, Alvera, 159 Gray Avenue, Webster Groves, Missouri
GUELKER, Mary Alice, 2724 Greer Avenue, St. Louis, Missouri
GUYOL, Helen, 524 Warren, St. Louis, Missouri

H

HACKETT, Patricia, 5089 North Kingshighway, St. Louis, Missouri
HALLINAN, Mary Patricia, 545 15th Street, Augusta, Georgia
HAWARD, Rosemary, 92nd at Harrison, Kansas City, Missouri
HAYDEN, Rosemary, 7364 Northmoor Drive, Clayton, Missouri
HEDERMAN, Cecilia, 5231 Maffitt, St. Louis, Missouri
HELLRUNG, Jeanne, 733 Harvard Avenue, University City, Missouri
HERNAN, Katherine, 1130 Maple Place, St. Louis, Missouri
HERSHEY, Louise Isabel, 1065 Jackson Avenue, St. Louis, Missouri
HIGGINS, Betty Ann, 345 Fairlawn, Webster Groves, Missouri
HIGGINS, Pat, 345 Fairlawn, Webster Groves, Missouri
HOEVEL, Flora, Olive Street Road, Creve Coeur, Missouri
HONIG, Betty, 1669 Andrew Drive, Kirkwood, Missouri
HUBENTHAL, Ruth, 5558 St. Edward, St. Louis, Missouri
HURLEY, Evelyn, 7329 Lindell, St. Louis, Missouri

I

IGOE, Rainalda, 2517 Mullanphy, St. Louis, Missouri

K

KILLION, Mary Ann, Portageville, Missouri
KLAUS, Lenore, 1360 State Street, East St. Louis, Illinois
KLECAN, Mary Teresa, 7329 Terrace, Kansas City, Missouri
KNAAPEN, Rica, 4 Minor Street, Sturgeon Bay, Wisconsin
KNECHT, Marian, Westwood, Indiana
KNETZGER, Bettie, 369 South Elm Avenue, Webster Groves, Missouri

STUDENT DIRECTORY—Continued

L

LaBARGE, Louise Lauck, 7614 Forest View Drive, St. Louis County, Missouri
LaBARGE, Betty Ann, 7614 Forest View Drive, St. Louis County, Missouri
LAMPING, Doris, 7207 Northmoor Drive, St. Louis, Missouri
LEAHY, Margaret, 4029 Flad Avenue, St. Louis, Missouri
LORENZ, Josepha, No. 3 Layton Terrace, Richmond Heights, Missouri
LUCE, Patricia, 6607 San Bonita, Clayton, Missouri
LUMINI, Rena, 4301 Lee Avenue, St. Louis, Missouri
LYNCH, Mary Margaret, 1014 West 39th, Kansas City, Missouri

M

McATEER, Marilynn Ann, 805 Market Avenue, East St. Louis, Illinois
McCABE, Mary, 4344 Randall Place, St. Louis, Missouri
McCARTHY, Lenore, 4527 Harris Avenue, St. Louis, Missouri
McCARTHY, Peggy, 5742 Terry, St. Louis, Missouri
McCULLOUGH, Kathleen Adair, 405 Winston Street, Lemay, Missouri
(Fort Mills, Phillipine Islands)
McKEON, Mary Claire, 5 Elm Place, Webster Groves, Missouri
McNAMARA, Ruth, 8343 Washington, St. Louis, Missouri
MACAULEY, Helen, 5925 Page Avenue, St. Louis, Missouri
MAGUIRE, Lee, 121 West Locust, Canton, Illinois
MANNING, Mary Margaret, 7338 Ahern, University City, Missouri
MANSOUR, Marie Isabelle, Lake Village, Arkansas
MAPEL, Ann Elizabeth, 5714 Michigan Avenue, St. Louis, Missouri
MARLOW, Margaret Louise, 233 North 14th Street, Murphysboro, Illinois
MASTRO, Sylvia, 1431 Bellevue Avenue, Richmond Heights, Missouri
MEISTRELL, Mary Ann, Boonville, Missouri
MEISTRELL, Judy, 415 Fourth Street, Boonville, Missouri
MENGES, Agnes Marie, 4515 Lindell, St. Louis, Missouri
MENGES, Mary Louise, 4515 Lindell, St. Louis, Missouri
METZGER, Marian, 7150 Princeton, University City, Missouri
MEYER, Jaclyn, 7720 St. Albans, Richmond Heights, Missouri
MEYER, Mary Margaret, 6712 McCune, St. Louis, Missouri
MILLER, Margaret, 7330 Winchester Drive, Normandy, Missouri
MILTON, Grace, 410 South Kirkwood, Kirkwood, Missouri
MIRAVALLE, Helen Marie, 6623 Itaska, St. Louis, Missouri
MORMINO, Rosemarie, 202 School Street, Hillsboro, Illinois
MORTON, Lucile, 203 North Meramec, Clayton, Missouri
MOSBERGER, Marion, 4537 North Kingshighway, St. Louis, Missouri
MULLER, Suzanne Irene, 5539 Waterman Blvd., St. Louis, Missouri
MURPHY, Audrey, 5444 Queens, St. Louis, Missouri
MURPHY, Betty, 5007 Grand, Kansas City, Missouri
MURPHY, Rose Mary, 7117 Northmoor Drive, University City, Missouri

N

NACHTMANN, Suzanne, 655 Fairview Avenue, Webster Groves, Missouri
NAUMANN, Audrey, 3708 Oakmount Drive, Normandy, Missouri
NEAF, Genevieve, 225 North Bemiston, Clayton, Missouri
NOONAN, Grace Lucille, 4118 San Francisco, St. Louis, Missouri
NUMAINVILLE, Evelyn Marie, 437 South Border, Hot Springs, Arkansas

O

O'CONNELL, Lucille, 7277 Roland, St. Louis County, Missouri
O'HARA, Isabel, 4535 Lindell, St. Louis, Missouri
OINK, Geraldine, 6107 Waterman, St. Louis, Missouri
OWEN, Jane, 3981 Holly Hills, St. Louis, Missouri
OWEN, Jean, 3981 Holly Hills, St. Louis, Missouri

STUDENT DIRECTORY—Continued

P

PACK, Marie, 5906 Waterman, St. Louis, Missouri
PANDJIRIS, Gloria, 9100 Clayton Road, Clayton, Missouri
PEASEL, Anne, 4141 Cleveland, St. Louis, Missouri
PENDERGAST, Catherine, 2923 Victor, Kansas City, Missouri
PORBECK, Selma, 1920 Marshall, Little Rock, Arkansas
PRATT, Arkie Lee, 2203 Clay, Murphysboro, Illinois

Q

QUIRK, Rosemary, 6059 McPherson, St. Louis, Missouri

R

RAUPP, Barbara, 404 South Crea Street, Decatur, Illinois
REDDINGER, Mary Margaret, 5343 Terry Avenue, St. Louis, Missouri
REID, Mary Lu, 410 Dal-Whi-Mo Court, Sedalia, Missouri
RIEDEL, Mary, 615 Center, Hannibal, Missouri
RICHARD, Mary Virginia, 3920 Minnesota, St. Louis, Missouri
RINDERER, Dorothy, 2049 Russell Blvd., St. Louis, Missouri
ROCHE, Mary Alice, 5110 Thekla Avenue, St. Louis, Missouri
RYAN, Alice, 5932 Waterman, St. Louis, Missouri

S

SABADELL, Henrietta, Chase Hotel, St. Louis, Missouri
SACKBAUER, Dorothy, 3 Elm Avenue, Glendale, Missouri
SANSONE, Marie Anne, 7035 Forsythe Blvd., University City, Missouri
SAWYERS, Alice Lee, 202 Greening, Las Cruces, New Mexico
SCHINDLER, Virginia, 902 Country Club Drive, St. Louis, Missouri
SCHNEBLIN, Mary Alice, 6207 Michigan Avenue, St. Louis, Missouri
SCHUH, Betty Marie, 9009 Gravois, St. Louis, Missouri
SCHULTE, Dolores, 2835 Union, St. Louis, Missouri
SHEEHAN, Virginia, 8039 South Drive, Richmond Heights, Missouri
SIMON, Jane Marie, 4263 Maryland, St. Louis, Missouri
SLAUGHTER, Laura Marie, 608 West Main Street, Fredericktown, Missouri
SMITH, Rita, 5412 Ruskin, St. Louis, Missouri
STIERS, Helen, 6309 Clayton Road, Clayton, Missouri
STONE, Ruth Jeannette, 150 Linden Avenue, Clayton, Missouri
SULLIVAN, Mary Ellen, 5567 Pershing, St. Louis, Missouri
SWANGER, Anne, 5241 Nottingham, St. Louis, Missouri
SWEENEY, Patricia, 6160 Tennessee, St. Louis, Missouri

T

TICHACEK, Jane Marie, 3535 Pestalozzi, St. Louis, Missouri
TLAPEK, Rose, St. Mary's, Missouri
TRACY, Mary Elizabeth, 7558 Warner Avenue, St. Louis, Missouri
TRAMELLI, Marie, 4342 Laclede, St. Louis, Missouri

V

VOEGELI, Alice, 7343 Northmoor, St. Louis, Missouri

W

WAHLERT, Mary Rita, 36 Broadview Drive, Clayton, Missouri
WALSH, Anne McDermott, 1139 Claytonia Terrace, Richmond Heights, Missouri
WALSH, Rosemary, 6708 Hancock Avenue, St. Louis, Missouri
WARD, Rosemary Catherine, 7336 Princeton, University City, Missouri
WELLS, Dorothea, 416 South Gore, Webster Groves, Missouri
WEBER, Marian Ruth, 1224 Sunset Avenue, Richmond Heights, Missouri
WOELFLE, Rosemary, 5705 Terry, St. Louis, Missouri
WRIGHT, Edwina, 8139 Glen Echo Drive, St. Louis, Missouri

Z

ZIEGLER, Dorothy, 26 West 53rd Street, Kansas City, Missouri

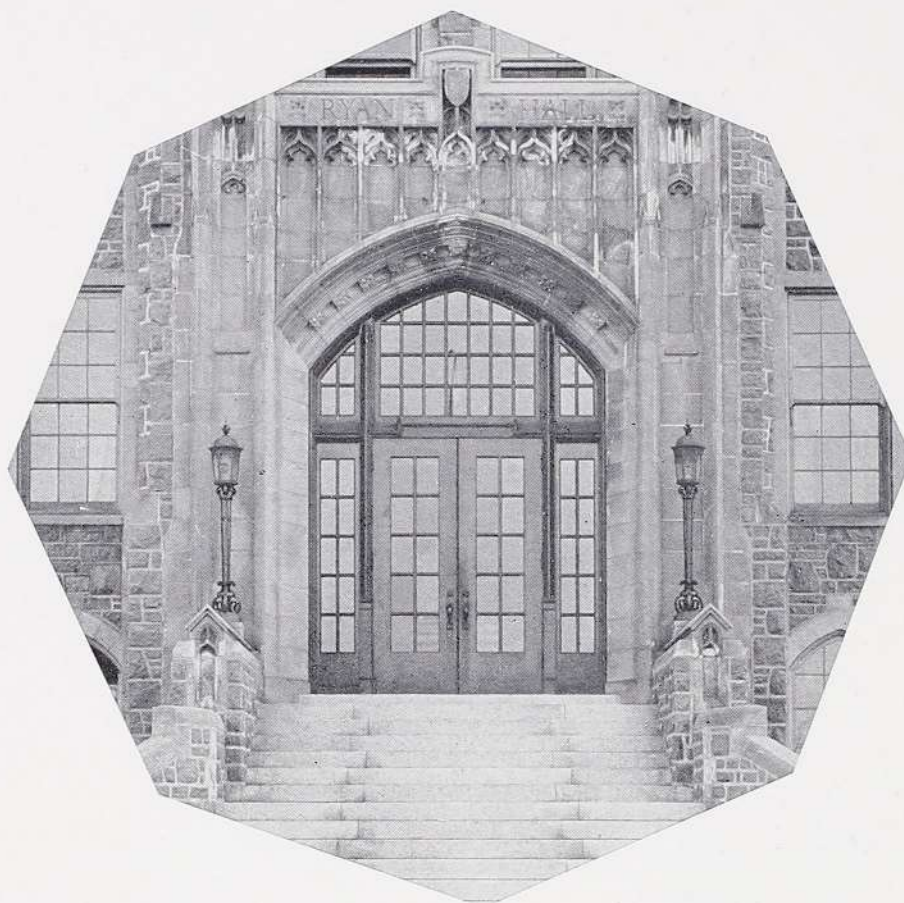
Recipient of Alumnae Hood

Awarded in recognition of her loyalty
to Fontbonne College

ALICE VOEGELI



The ivy-covered walls of Ryan Hall tower majestically toward an April sky.



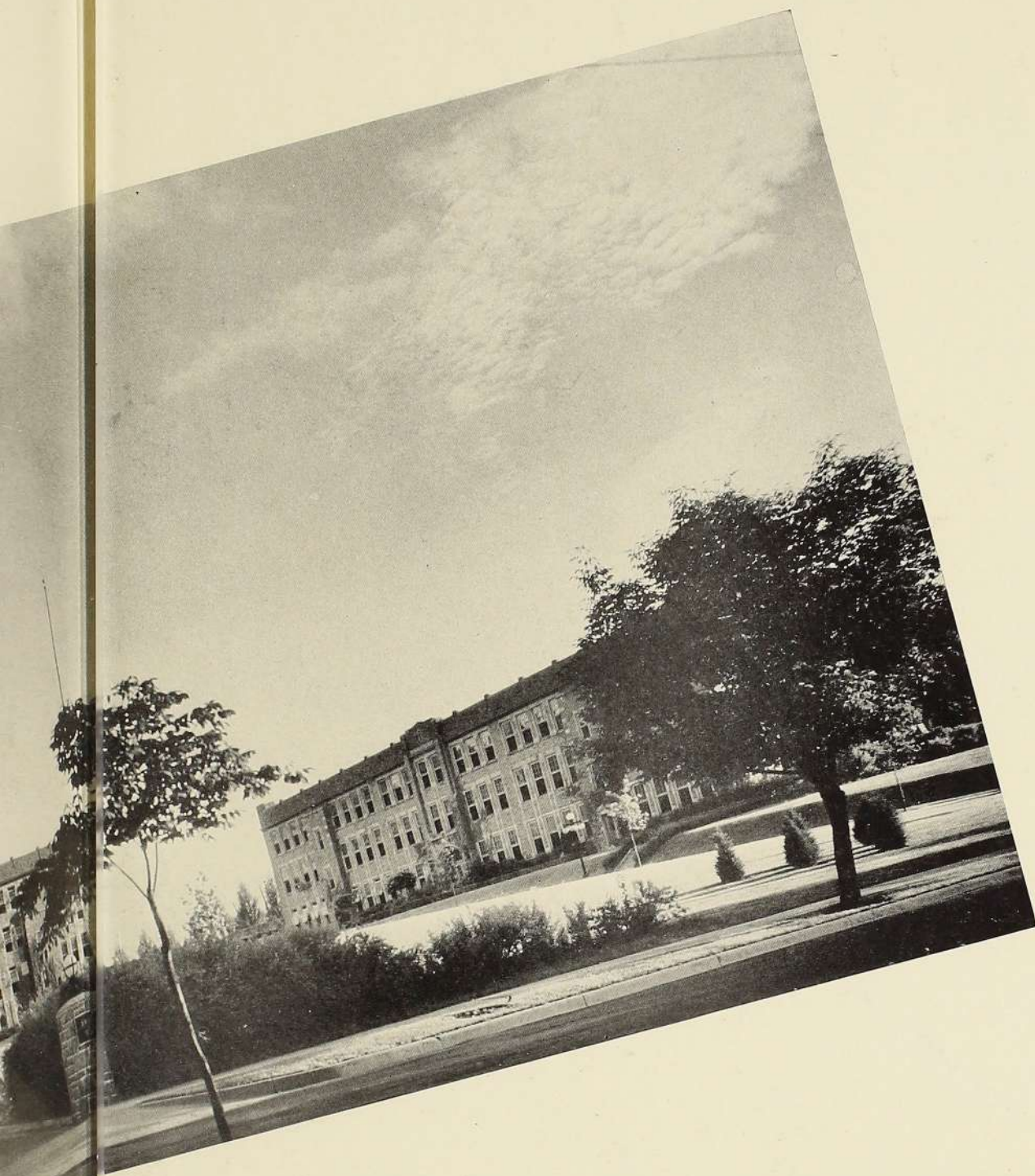
Through this entrance to
the Administration Building
all Fontbonne students
pass during their college career

- GRIMES-JOYCE PRINTING COMPANY
- CENTRAL ENGRAVING COMPANY
- COMBS-DUVAL STUDIO
- VICTOR STEVENSON STUDIO
- PIAGET STUDIO
- PAT HIGGINS '41—ARTIST
- COVERS BY BECKTOLD

AUTOGRAPHS

Signing Off





Nineteen Forty-one