

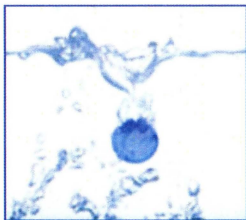
Till We Have Faces

from the novel by C.S. Lewis

Adapted by Deanna Jent

April 15 - May 1, 2011

Next Season at Mustard Seed:



Falling

September 1-11, 2011

Both funny and frightening, this new play by Artistic Director Deanna Jent explores the life of a family caring for an aggressive teen-aged boy with severe autism. Lori Adams (*Fires in the Mirror*) will direct this world premiere.

Godspell

November 18 - December 11, 2011

Musical Director Joe Schoen (*Smoke on the Mountain*) returns to Mustard Seed for this musical salute to the Gospel of Matthew, which will be set in the streets of downtown St. Louis.



Playland

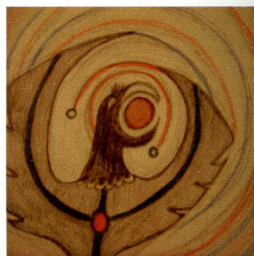
February 2 - February 12, 2012

Athol Fugard's play will feature J. Samuel Davis and Charlie Barron. The play is a piercing look at the effects of war and the struggle for redemption.

The Winter's Tale

April 13 - April 29, 2012

Shakespeare's story of jealousy, betrayal, murder and forbidden love will be set in modern day Seattle and the wilderness of Alaska. Infused with Native American music and myth, this production will explore the possibility of authentic transformation in a virtual world.



TBA

The season will close with a staged reading of the winning script from Mustard Seed Theatre's New Play Contest, which seeks to cultivate scripts exploring questions of faith and social justice.

**Early Bird Special:
5 Shows for \$55.00 In our 5th Season***

*offer good through 5/5/11

TILL WE HAVE FACES

CAST

Priestess	Jill Ritter
Queen Orual	Michelle Hand
Young Orual	Sarah Cannon
Redival	Bess Moynihan
Batta	Jean Lang
Bardia	Shaun Sheley*
King	Robert Mitchell
Fox	Gary Glasgow*°
Priest of Ungit	Richard Lewis
Psyche	Rory Lipede
Lady Ansit	Leslie Wobbe°
Servant/Trunia	Justin Leibrecht
Soldier/Argan	Phillip Bettison°

STAFF

Director	Deanna Jent
Assistant Director	Kelly Nava
Stage Manager	Lorraine LiCavoli*
Asst. Stage Managers	Patricia Duffin, Angela Doerr
Set Design	Dunsi Dai
Set Design Assistant	Colt Frank
Light Design	Michael Sullivan°
Costume Design	Donna Northcott
Sound Design	Deanna Jent, Kareem Deanes°
Production Manager	Bess Moynihan
Shop Supervisor	Jon Hisaw
Light Board Operator	Josie Zeugin
Sound Board Operator	Zoe Sullivan
Stage Crew	Adrienne Curry, Jessica Haley
Wardrobe	Nikki Lott
Managing Director	Carmen Russell°
Education/Outreach/Box Office	Emily Immer
Public Relations	Leslie Wobbe°
Publications Intern	Liz Richter
Program Artwork	Adrienne Curry

*member of Actors' Equity Association, the union of professional actors and stage-managers
°Resident Artist of Mustard Seed Theatre

SYNOPSIS

Till We Have Faces is set in the castle and surrounding areas of the mythical kingdom of Glome. The people of Glome worship a goddess named Ungit, who is represented by a dark stone statue that is vaguely in the shape of a woman. When angered, Ungit requires human sacrifice.

ACT I:

Queen Orual accuses the gods of lies and injustice and as evidence tells us the story of her life. She begins at age 6, when her father, the widower King Trom, brings a slave from the Greeklands to be her tutor. The King believes Orual is ugly and that her only potential usefulness is as a scholar. The King remarries, hoping for a male heir, but loses his second wife in childbirth and is given Istra (Psyche) – a daughter instead.

Moving forward in time, we meet Psyche in her teens. Her beauty and generous nature captivate the people of Glome, and when the kingdom is struck with a deadly Fever, Psyche goes out among the people in an effort to heal them. The people begin to worship Psyche as a Goddess, and this invokes the wrath of Ungit, who sends Psyche to her death as the Bride of the Brute.

Devastated by the loss of Psyche, Orual is distracted by sword-fighting lessons from Bardia, the Captain of the Guards. Orual decides to go to the mountain in search of Psyche's bones, but when she arrives she is astonished to find Psyche alive and thriving. Psyche claims to live in a castle with a husband whom she has never seen. Convinced that Psyche is hallucinating, Orual forces her to betray her husband by sneaking a look at him while he is asleep. The consequences of her action send Psyche away into exile and Orual home with empty arms.

ACT II:

King Trom dies and Orual becomes Queen. She wins success in wars and in ruling her people, but battles a secret love for Bardia and the continued grief for Psyche. Traveling to a nearby country, she hears a Priestess telling about a new goddess named Istra, and is shocked to hear that the "jealous sisters" are to blame for Istra's downfall.

Determined to set the record straight, Queen Orual begins writing a book containing the true story. As she writes, she has a series of dreams in which she sees Psyche and participates in her seemingly impossible tasks. The revelations of the dreams and circumstances surrounding Bardia's death lead the Queen to a vision in which she reads her accusation against the Gods in an open court. The unexpected response to her accusation leads the Queen to a new understanding of love, beauty and faith.

THE MYTH OF PSYCHE

The myth of Psyche symbolizes transformation achieved through self-discovery, loss, and learning. The story begins with the Greek goddess of love, Aphrodite, who is jealous of Psyche's beauty. Aphrodite sends her son Eros (who is Cupid in Roman mythology) to poison Psyche so that no man will desire her. But Eros falls in love with Psyche and arranges to have Psyche sent to a mountain to wed an ugly beast. Eros steals Psyche from the mountain and takes her to his secret palace, where he comes to her under the cover of darkness so that his mother cannot see them together. Psyche is happy with her life and delighted to show her new home to her two sisters. The sisters, jealous of her beautiful palace, convince Psyche that her husband is really an ugly beast who will probably kill her. At their bidding, she lights a lamp while Eros is asleep. Startled to see the beautiful God, she spills oil on him. Aphrodite sees them together in that instant, and imprisons her son. Psyche begs to be reunited with Eros, and Aphrodite gives her seemingly impossible tasks to complete. Driven by her love, and helped by animals and guides sent secretly by Eros, she completes her tasks and is reunited with Eros. Zeus gives Psyche the elixir of immortality. Their happy marriage produces a daughter, who is named "Pleasure."

"The Greek name for a butterfly is Psyche, and the same word means the soul. There is no illustration of the immortality of the soul so striking and beautiful as the butterfly, bursting on brilliant wings from the tomb in which it has lain.... Psyche, then, is the human soul, which is purified by sufferings and misfortunes and is thus prepared for the enjoyment of true and pure happiness." --Bulfinch's Mythology

PSYCHE AND C.S. LEWIS

C.S. Lewis is most famous for his creative fiction such as *The Chronicles of Narnia* and *The Screwtape Letters*. He first encountered the myth of Psyche as a university student and attempted to write a poetic version of the story. Throughout his career, he dabbled with other ways to retell the myth, but it wasn't until his marriage to Joy Gresham that he was able to finally write the novel. Lewis originally titled it *Bareface*, but his publishers thought that sounded too much like a Western novel, so he changed the title. *Till We Have Faces* is the last work of fiction that he wrote, and is the novel that he considered to be his best work.



THE ADAPTATION OF A NOVEL



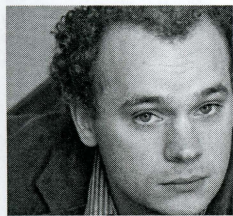
Deanna Jent is a Professor of Theatre at Fontbonne University and the Artistic Director of Mustard Seed Theatre. She received her Bachelor of Fine Arts degree in Theatre from Illinois Wesleyan University and her Ph.D. in Theatre from Northwestern University, where she studied with Tony Award-winning adapter and director Frank Galati (*The Grapes of Wrath*). Deanna was classmates with Mary Zimmerman (who won a Tony in 2002 for directing her adaptation of *Metamorphosis*).

Deanna first encountered the novel *Till We Have Faces* at Northwestern, where she was taking a class called “Archetypal and Psychological Approaches to Literature.” She loved how Lewis wove together Greek myth and Christian allegory, and began thinking about adapting the novel for the stage. In 2007 she sought the rights for the adaptation, and began a series of dialogues with Douglas Gresham, the holder of the rights to all of Lewis’s work (and his step-son). After two years of working with Gresham (revising drafts, discussing characters), Deanna was granted permission to stage her adaptation here at Mustard Seed Theatre.

Deanna’s previous writing for and about the theatre includes a stage adaptation of *Pride and Prejudice* which was first produced by ACT Inc. in 2003 and has had several productions since then. She was a theatre critic for the Riverfront Times from 2003-2006 and the editor of *Christianity and Theatre* magazine from 2000-2003. In the fall of 2011, she will debut as a playwright with the Mustard Seed Theatre production of her play *Falling*: a story about family, autism, marbles and jelly.

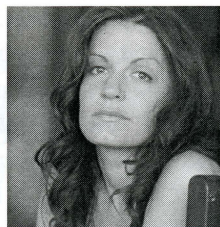
Deanna lives in Webster Groves with her husband Steve (celebrating 30 years of marriage this June), her children Christopher, Lindzey and Andy, and their dogs Sadie and Rufus.

CAST



Phil Bettison^o is a senior at Fontbonne University studying theatre education and has appeared in many roles on and off stage with Mustard Seed Theatre and Fontbonne student productions. You've just lost the game. Phil would like to thank his parents for their dedication and hard work, and Shaun for the lessons. Much love to Cherry.

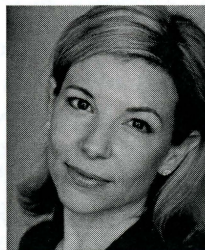
Sarah Cannon a graduate of the University of Evansville and Kevin Kline nominee for Outstanding Supporting Actress (*The Crucible*) and Lead Actress (*The Lady From Dubuque*) both with Muddy Waters Theatre. She last appeared with Mustard Seed Theatre as Marianna in *Measure for Measure*. She will perform next in *Dark Matters* with Stray Dog Theatre. She sends love to her ridiculously good looking and talented husband Jason and thanks to Deanna for this amazing journey through Glome.



Gary Glasgow^{*o} is delighted to be returning to Mustard Seed Theatre having last appeared here in *The Unseen*. Locally, he has performed at the Repertory Theatre of St. Louis, Variety Children's Theatre, The MUNY (over 30 productions), and eight seasons with the Shakespeare Festival of St. Louis. Regional theatres include Chicago Shakespeare Repertory, Wisconsin Shakespeare Festival, Colorado Shakespeare Festival, Apple Tree Theatre, and the Starlight Theatre in Kansas City. He

is a Resident Artist with Mustard Seed Theatre. A proud faculty member of the Conservatory of Theatre Arts at Webster University, Gary would like to thank his family for their love and support.

Michelle Hand performs for the third time with Mustard Seed Theater: she appeared in their inaugural production of *Remnant* and in last year's *Fires in the Mirror*, for which she was nominated for the Kevin Kline award for Outstanding Lead Actress. She is a co-founder of the Orange Girls Theater Company and will be returning as an adjunct instructor in Fontbonne's Theater Department this fall. She is grateful to her friend and director, Deanna Jent, for giving her these words and



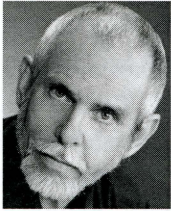
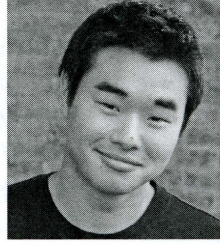
the chance to speak them in the company of such a gifted and generous actors—it has been very good to be the queen. Thanks to Tim & Liv for their love, to her family and friends for their continued support, and to Mr. Welch for starting it all.

CAST



Jean Lang has worked on many shows as an assistant stage manger, and most recently stage-managed for Mustard Seed's *Shadowlands* and *The Chosen* (The Kevin Kline winner, best ensemble). Jean will be graduating from Fontbonne University, this fall 2011 with her BA in Performing Arts, and then will begin working on her MAT. Thanks as always to Deanna, and to the stage management team - you rock!

Justin Leibrecht is thrilled to be in his first Mustard Seed Theatre production. He holds a BA in Theatre from Saint Louis University, where he played Kreon (*Antigone*), Eilert Lovborg (*Hedda Gabler*) and Linus (*You're a Good Man Charlie Brown*). Justin makes his debut at the Shakespeare Festival this summer in *Taming of the Shrew* and will return to Mustard Seed in November for *Godspell*. Thanks to his parents, friends and family for their continued love and support.



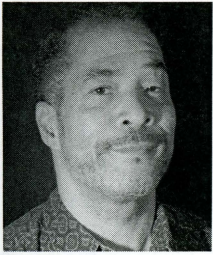
Richard Lewis is proud to be appearing with this wonderful cast in his sixth Mustard Seed production. Last year, he was nominated for the Kevin Kline Award as Outstanding Actor in a Supporting Role for his work in Mustard Seed's *The Chosen*, which won the Kevin Kline Award for Best Ensemble. That show was also directed by Deanna, with whom Richard always feels privileged to work. Richard is an Associate Professor at Fontbonne in Communication Disorders and Deaf Education.

Rory Lipede is a graduate of Fontbonne University with a Performing Arts degree. A former professional ballet dancer, she is now a New York based actor. Rory was last seen in Mustard Seed's production of *Fires In The Mirror*. NY credits include leading roles at Sundance (GLAAD award), New Dramatists, MTC, The Lucille Lortelle (Best Fringe Performance, Top 20 Actors in New York), The Public, The Classical Theatre of Harlem and many more. Kisses to my supportive family and friends and "loves and hugs" to all those who continue to encourage and support my STL inspired NY career... Mwah!!



Bess Moynihan is excited to be returning to the Mustard Seed stage having last been seen in *The Good Times are Killing Me* and *Measure for Measure*. Bess currently works as the Production Manager for Mustard Seed, HotCity, and Ozark Actors Theatres. She would like to thank Deanna, Michael and the entire cast and crew for making this such an enjoyable experience. Love to her family and friends.

CAST



Bob Mitchell is so happy to return to Mustard Seed for his third show. He previously appeared in *The Good Times are Killing Me* and *Remnant*. You've seen him at most of the theatres in St. Louis, most recently in *Perides* at the Black Repertory Theatre, and *The Tempest* at St. Louis Shakespeare Company. He is also Artistic Director of the NonProphet Theatre Company.

Jill Ritter is excited to return to Mustard Seed Theatre for the second time, having recently played Gerte Schulte in their production of *Crumbs from the Table of Joy*. She has worked with several local theatre companies, including ACT Inc., Stray Dog, The Orange Girls, Muddy Waters Theatre Company, St. Louis Shakespeare, Magic Smoking Monkey Theatre, WEPG, and HotCity Greenhouse. She also sings contralto with the St. Louis Chamber Chorus, and runs her own photography business: www.jillritterphotography.com.



Shaun Sheley* thanks Deanna and Mustard Seed Theatre for the opportunity to be a part of this beautiful production. Locally Shaun has worked as an actor, director, or fight choreographer, with Stages St. Louis, The MUNY, Hot City Theatre, The St. Louis Rep., Vanity Theatre Productions, Washington University, Fontbonne University, Webster University, Lindenwood University, and Missouri Baptist University. Shaun has appeared in off-Broadway productions and has an MFA in Directing from Lindenwood University. He teaches classes in movement, stage combat and theatre history at Webster's Theatre Conservatory and at the University of Missouri St. Louis. Much love to Colleen, Lillian, Jack, Kate and Miranda.



Leslie Wobbe^o is thrilled to appear in her second Mustard Seed show having previously appeared as one of the church ladies in *Smoke on the Mountain*. She is a Resident Artist and normally works offstage doing marketing, PR and box office. She has appeared onstage with many other local theatres including West End Players Guild and Stray Dog Theatre. Thanks to "the boys" for their patience and support!

DESIGNERS AND CREW



Dunsai Dai has designed for Off-Broadway and at regional theatres across the country. His favorite designs include *River Niger* (St. Louis Black Rep.), *Fiddler on the Roof* (Stages of St. Louis), *1776* (Arrow Rock Lyceum Theatre), *From Door to Door* (The New Jewish Theatre), *Remnant* (Mustard Seed Theatre) which received a Kevin Kline award (2007) and *Two Headed* (Black Cat Theatre) which was nominated for a Kevin Kline Award in Best Set Design (2008). Dunsai is a professor of scene design at Webster University.

Kareem Deanes is a Mustard Seed Resident Artist and an alumnus of Fontbonne. He teaches at Parkway West Middle School. In addition to sound design for numerous Fontbonne productions, he has designed for Act Inc and Soundstage Productions.



Angela Doerr is excited to be working on her first Mustard Seed Show. She is currently working on her BA in Performing Arts at Fontbonne, and plans to pursue her MA in Theatre Education. She would like to thank Deanna and Lorraine for this opportunity and her family and friends for putting up with the crazy schedule.

Patricia Duffin attends Fontbonne University pursuing her Master's in Theatre Education. She has worked with Our Shoes Are Red/The Performance Lab, TASO and CoHo Productions in Portland, OR as Stage Manager for such productions as: *This Lime Tree Bower*, *Ursula*, *Thom Pain* and *4.48 Psychosis*.



Lorraine LiCavoli* is a member of Actors' Equity Association and returns to stage manage her 4th show with Mustard Seed Theatre. Lorraine graduated in 2004 with a BFA in theatre with an emphasis in stage management from the Conservatory of Theatre Arts at Webster University and is currently the Representative for the Conservatory of Theatre Arts and Department of Dance at Webster University. This summer she hopes to return to the Munny where she has assistant stage managed for the past 5 summers.

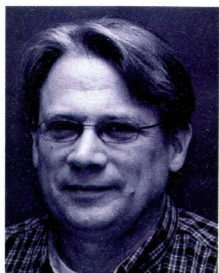
DESIGNERS AND CREW



Kelly Nava holds a Master's degree in Theatre Education from Fontbonne University, and a Bachelor's degree in Theatre and English Literature from Concordia University in Irvine, California. Last seen on the stage in Fontbonne University's *Quilters*, Kelly also spent time unseen directing *The Complete Works of Shakespeare - Unabridged* for Fontbonne in 2008. Special thanks to Deanna for all the years of instruction, mentoring and friendship.

Donna Northcott is Founding Artistic Director of St. Louis Shakespeare and Magic Smoking Monkey Theatre, and a faculty member in the Theatre Department of Lindenwood University, where she directs and teaches Acting and Costume Design, as well as designing costumes for the University productions.

Michael Sullivan is a Mustard Seed Resident Artist, an Associate Professor in Theatre at Fontbonne, the Technical Director and resident Lighting Designer. Mustard Seed Theatre lighting designs include *Fires in the Mirror*, *The Chosen*, *Shadowlands* and *An Almost Holy Picture* (Kevin Kline nomination for Outstanding Lighting Design). Upcoming projects include *Intelligent Life* for HotCity Theatre, *Kind Sir* for Act Inc, and *Putnam County Spelling Bee* for Ozark Actors Theatre. Much love to Jane, Mark and Zoe.



Mustard Seed Theatre
6800 Wydown Blvd.
St. Louis, MO 63109

314-719-8060
www.mustardseedtheatre.com

AROUND TOWN...



PRESENTED BY

THE PROFESSIONAL THEATRE COUNCIL OF ST. LOUIS

WWW.KEVINKLINEAWARDS.ORG

"PROMOTING AND CELEBRATING EXCELLENCE IN PROFESSIONAL ST. LOUIS THEATRE"

NOW PLAYING AND COMING SOON

THE DEATH OF ALTAHUALPA

April 1 – 17
Upstream Theater

THE LADY WITH ALL THE ANSWERS

May 15 – 22
Max & Louie Productions

TILL WE HAVE FACES

April 15 – May 1
Mustard Seed Theatre

FAULTLINES

May 20 – June 5
Gitana Productions

AWAKE AND SING!

April 20 – May 8
The New Jewish Theatre

THE MONTFORD POINT MARINE

May 25 – June 26
The Black Rep

BLACK PEARL SINGS!

April 20 – May 15
The Black Rep

MASS APPEAL

May 26 – June 12
Dramatic License Productions

AGNES OF GOD

April 28 – May 8
Avalon Theatre Company

THE TAMING OF THE SHREW

May 27 – June 19
Shakespeare Festival St. Louis

INTELLIGENT LIFE

April 29 – May 14
HotCity Theatre

FOR FULL PRODUCTION INFORMATION
OF ALL THESE SHOWS VISIT

KEVINKLINEAWARDS.ORG

AMD

anders minkler & diehl llp

CPAs + Consultants



THE ELEVEN, INC.

