

FONTBONNE



A DRAMA
OF
1939 & 40

Ex Libris

*Fontbonne
College Presents*



**THE COLLEGE
YEAR**

Directed *by*

ANGELA HANNAGAN

Editor

MARY CONCANNON

Assistant Editor

ALEEN BLOCK

Photo Editor

MARIAN CLARK

Features

BETTY BOURK

Features

ROSEMARY HAWARD

Features

GERALDINE DUGGAN

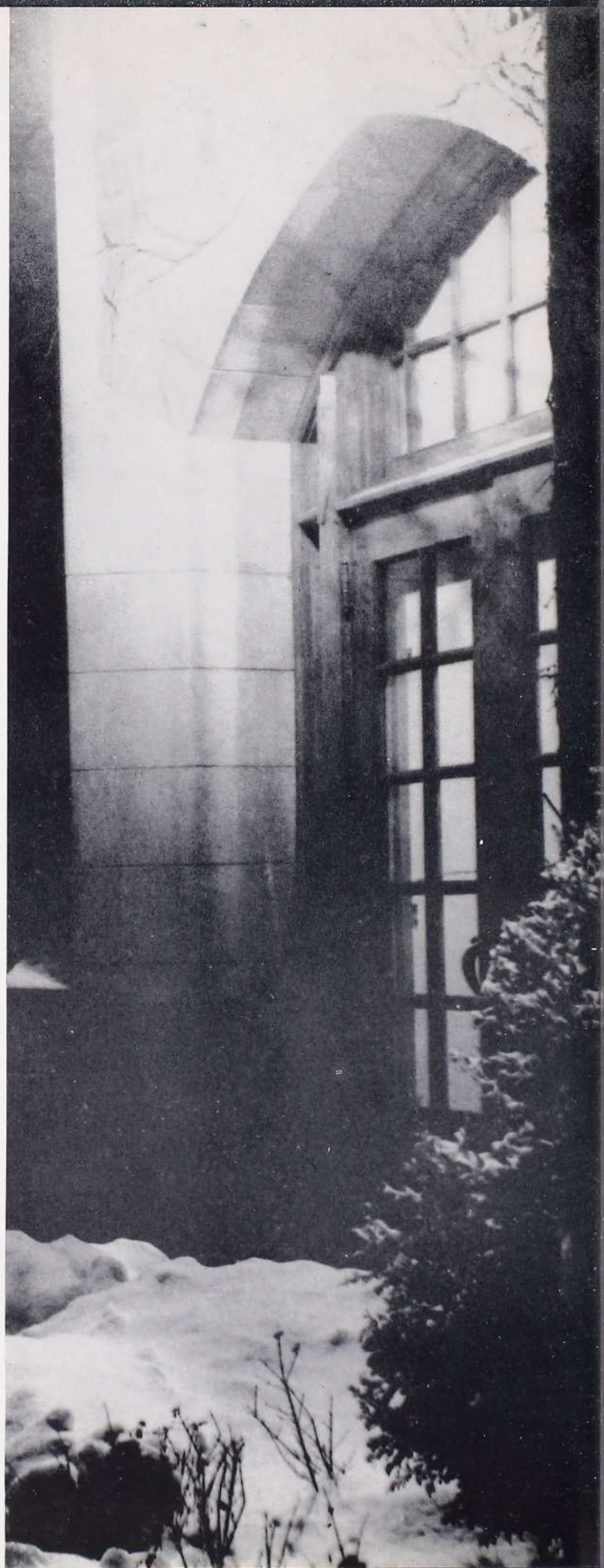
Business Manager

HELEN GUYOL

Advertising Manager

CATHARINE ROZIER

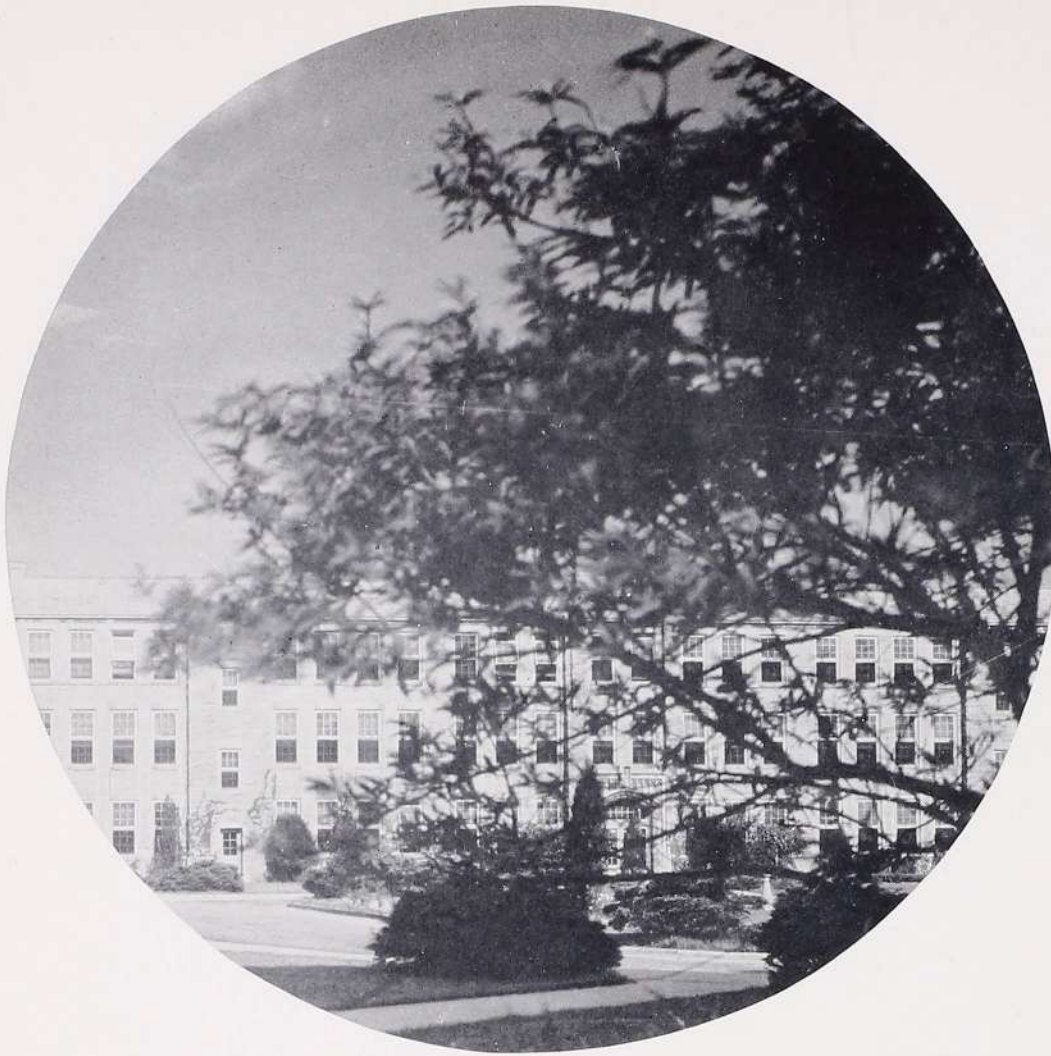
Circulation Manager



To the
Student Audience

We proudly present FONTBONNE for Nineteen Hundred Forty—with the hope that these scenes may help you to recapture the brief and fleeting hours of your days at Fontbonne College. May this volume often recall many happy memories.





Prologue . . .

For your constant interest in our welfare;
for your sympathetic attitude in moments of trial;
for your genial smile and winning personality;
for your high ideals which have ever been an inspiration to us;
for having made Fontbonne mean as much to us as it does to you,
we dedicate this Nineteen Hundred Forty drama of FONTBONNE to you,

Mother Joseph Aloysius

The Programme

OVERTURE

BEHIND THE SCENES

ACT ONE

PRELUDE TO LIFE

ACT TWO

THE SOCIAL WHIRL



A *Drama* OF NINETEEN



Thirty-nine — Forty

Administration

Mother Joseph Aloysius Geissert, C.S.J., A.M.

President

Sister Marietta Jennings, C.S.J., Ph.D.

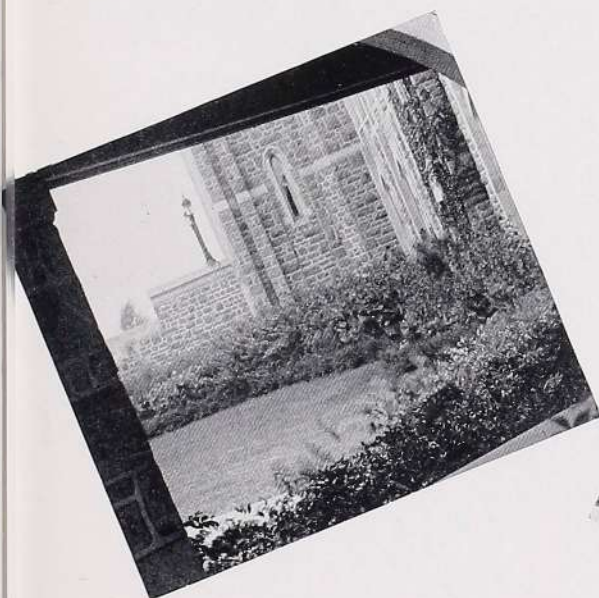
Dean

Sister Susanne Marie Vachon, C.S.J., A.B.

Registrar

Sister Mary Hilda Larsbach, C.S.J., A.B.

Treasurer



A *Drama* OF NINETEEN Overture--- *Behind the Scenes*



Top Row: Gwynette C. Willis, Very Rev. Leo J. Steck, Rev. Emmet Crane,
Belle M. Mullins

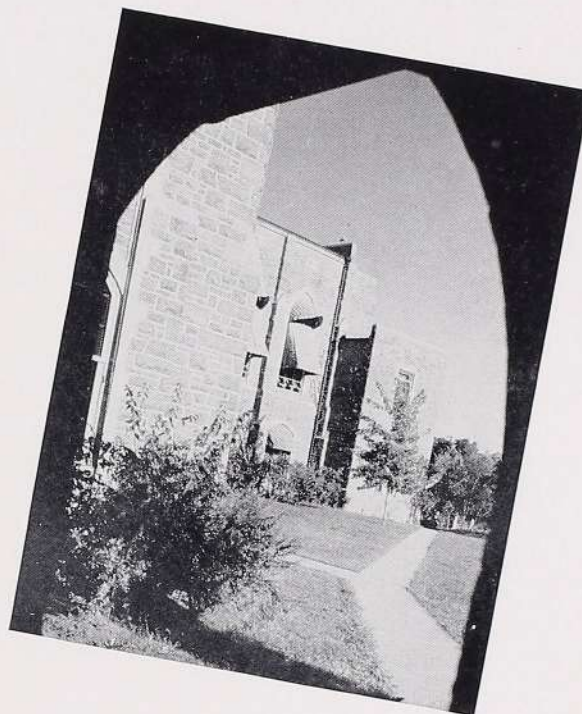
Second Row: Gertrude M. Horgan, Elouise Laumann, Elda Richieri, Eleanora Baer

Third Row: Margaret Aird, Rev. John Kenny, Rev. Joseph Kiefer, Gertrude Troemel

Bottom Row: Theresa M. Carmody, Virginia L. Fuehlen, Alphonse H. Clemens

Thirty-nine — Forty *Within These Walls . . .*

Our faith has been strengthened by contact with the eternal truths. We have taken our overflowing hearts to the altar of the Most High, and here we have received the grace to continue in our endeavors.



A *Drama* OF NINETEEN *Faculty*

Mother Joseph Aloysius Geissert, C.S.J., A.M.
President

Margaret Aird, B.S. in Nursing
Instructor in Home Nursing

Eleanora Baer, A.B.
Librarian

Sister Louis Joseph Bauer, C.S.J., B.M.
Instructor in Music

Sister John Joseph Bezdek, C.S.J., A.B., M.M.
Professor in Music and Director of the Department

Sister Sylvia Marie Boothby, C.S.J., A.M.
Professor in English and Director of the Department

Sister Mary Patricia Callaghan, C.S.J., A.M.
Professor in Mathematics

Theresa M. Carmody, B.S., M.S. in Home Economics
Instructor in Home Economics

Sister St. Paul Christman, C.S.J., A.M.
Instructor in German

Alphonse H. Clemens, A.M.
Professor in Economics and Sociology

Reverend Emmet Crane, C.Ss. R.
Professor in Religion

Sister Anna Mechtilda Dolin, C.S.J., A.M.
Professor in Latin and Director of the Department

Sister Bernard Joseph Dunne, C.S.J., A.M.
Associate Professor in English

Sister Mary Athanasia Dunnebacke, C.S.J., A.M.
Professor in Chemistry

Sister Mary Berchmans Fournier, C.S.J., A.M., Cand. Ph.D.
Professor in French and Director of the Department

Virginia Louise Fuehlen, A.M.
Social Representative

Sister Mary Antone Gaydos, C.S.J., A.B.
Instructor in Music

Sister Mary Frederic Glaser, C.S.J., A.M.
Professor in French

Sister Agnes Josephine Hickey, C.S.J., M.S.
Instructor in Home Economics Education

Eugene Hodapp, M.S.
Instructor in Biology

Gertrude Marie Horgan, A.M., Ed.M.
Instructor in English and Journalism

Sister Jeanne D'Arc Hurley, C.S.J., Ph.D.
Professor in Home Economics and Director of the Department

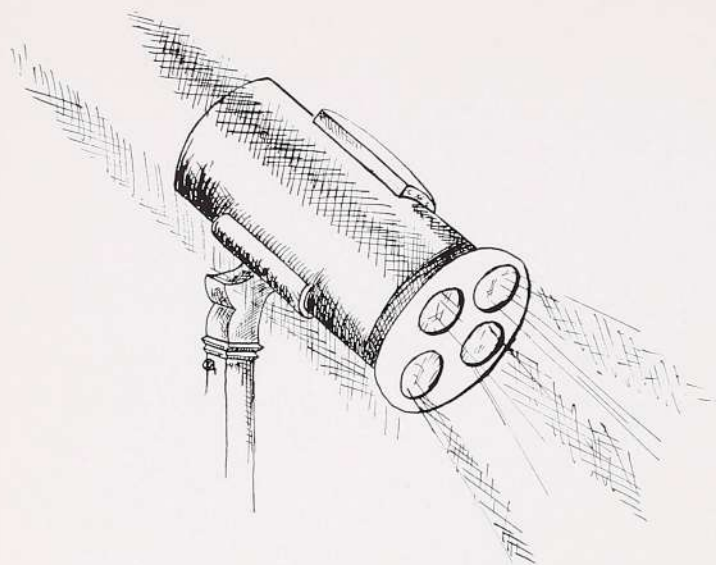
Sister Marietta Jennings, C.S.J., Ph.D.
Dean of the College, and Director of the Department of History

Sister Rose Agnes Keyes, C.S.J., M.S.
Instructor in Biology

Thirty-nine — Forty

Faculty

- Reverend Joseph P. Kenny, C.Ss. R.
Instructor in Religion
- Reverend Joseph F. Kiefer, S.J., Ph.D.
Instructor in Religion
- Sister M. Hilda Larsbach, C.S.J., A.B.
Instructor in Commercial Science
- Belle M. Marie Mullins, B.E., A.B.
Director of the Department of Speech and Dramatics
- Rosemary Elouise Laumann, A.B.
Instructor in Commercial Science
- Sister Mary Eleanor Nash, C.S.J., A.M.
Assistant Professor in History
- Sister Mary Pius Neenan, C.S.J., Ph.D.
Professor in Philosophy and Director of the Department
- Sister Rose Catherine Nicely, C.S.J., B.M.
Instructor in Violin and Music Theory
- Sister Mary Alfred Noble, C.S.J., Ph.D.
Assistant Professor in Psychology
- Reverend Leo J. Ohleyer, O.F.M., S.T.D.
Professor in Religion
- Sister Mary Berenice O'Neill, C.S.J., Ph.D.
Professor in Education and Director of the Department
- Sister Saint Luke O'Neill, C.S.J., A.B., B.S. in L.S.
Assistant Librarian
- Sister Catherine De Ricci Ostermann, C.S.J., A.M.
Professor in Chemistry and Director of the Department
- Sister Margaret John Purcell, C.S.J., A.M.
Associate Professor in English
- Arthur G. Rouse, Ph.D.
Instructor in Physics
- Elda O. Richieri, A.B.
Instructor in Italian
- Sister Mary Lucida Savage, C.S.J., Ph.D.
Professor in History
- Sister Mary Marguerite Sheeley, C.S.J., M.S.
Instructor in Biology
- Sister Mary Martha Scott, C.S.J., B.S. in Home Economics
Instructor in Home Economics
- Very Reverend Monsignor Leo J. Steck
Professor in Religion
- Sister Mary Edwina Tobin, C.S.J., A.M.
Associate Professor in Classical Languages
- Gertrude Troemel, M.S.
Instructor of Related Art and Director of Department of Fine Art
- Sister Susanne Marie Vachon, C.S.J., A.B.
Registrar of the College
- Gwynette Claudia Willis, A.B.
Instructor in Physical Education and Director of the Department



Act One . . .

Prelude to Life

The end of the year has come again. For some of us it is our last year at Fontbonne; for others, there are future years of study, play, and fun.

The Seniors, facing the final curtain of the college drama, should be well qualified to receive the applause of the world, after four years of term papers, mid-semester, parties, registration days, term papers, May Days, term papers, Horse Shows, club meetings, classes and term papers.

The Juniors are almost ready to part the curtain, and step before the footlights, replacing the Seniors of this year. To them we offer many hopes for a successful last year.

Understudying the Juniors are the potential actresses in the Sophomore Class, eagerly awaiting the time to show their dramatic talents.

The Freshmen are still waiting in the wings, hoping that they will be able to learn their lines as well as their predecessors have, so that when it is time for them to hear the call, "Curtain going up!", they may be as successful as those who have gone before them.



A *Drama* OF NINETEEN

Marie Arena

St. Louis, Missouri
A. B. in Sociology

Sodality, '37, '38, '39, '40

Poetry Club, '40

International Relations Club, '39, '40

Fontbonne Athletic Association, '37,
'38, '39

Secretary-Treasurer of Press Club,
'39

Circulation Manager of FONT, '38,
'39



Just count the books!

Quiet and reserved . . . like the
surface of a cascading mountain
stream . . . sparkling brown eyes
. . . dilettante in the fine art of
worrying . . . dynamite sheathed
in peppermint sticks . . . another
Jane Addams to carry on a great
tradition of service to others.

T H E F E A T U R E D P L A Y E R S

Thirty-nine — Forty

Mary Ann Aselin



Eldred, Pennsylvania
B. S. in Home Economics

Nazareth College, Nazareth, Michigan, '37, '38, '39

Home Economics Club, '40

International Relations Club, '40

Sodality, '40

Resident Students' Association, '40

C.S.M.C., '40

Dainty, petite, unobtrusive . . . a grave young miss offering friendship shyly, and accepting it with heart-warming friendliness . . . efficient and helpful . . . blue-eyed, serene . . . the nicest gift Pennsylvania has given since it gave America Independence Hall . . .



Smilin' through!

O F N I N E T E E N - F O R T Y

A *Drama* OF NINETEEN

Catherine Louise Aylward

Kansas City, Missouri
A. B. in Dramatic Art

St. Teresa's College, Kansas City,
'37, '38

President of Footlights Club, '40

C.S.M.C., '39, '40

Who's Who in American Colleges,
'40

Poetry Club, '39, '40

Press Club, '39

Maid to May Queen, '39



Letter from home or from him?

Joan of Arc in shining armor . . .
adolescence and maturity . . . an
inquisitive eyebrow in a heart-
shaped face . . . a vivid color
portrait in a fashion magazine . . .
versatility of acting portrayed in a
diversity of roles . . . loyal, de-
voted . . .

T H E F E A T U R E D P L A Y E R S

Thirty-nine — Forty

Jane Bristol



St. Louis, Missouri
B. S. in Home Economics

Class Vice-President, '40
Student Council, '40
Home Economics Club, '37, '38, '39, '40
FONT Staff, '39
Fontbonne Athletic Association, '37, '38
Riding Club, '37, '38, '39
Delta Phi, '39, '40
Phi Beta Chi, '39, '40

Mischief lurking in azure pools
behind grimly efficient oxfords . . .
executive dignity for special occasions . . .
laughter bubbling up
with or without provocation . . .
dictator and major domo . . .
combination of skepticism and wide-eyed belief . . .
generous to a fault,
one of her few faults.



Ready to do or drive!

O F N I N E T E E N - F O R T Y

A *Drama* OF NINETEEN

Rose Marie Brueggemann

St. Louis, Missouri
B. S. in Home Economics

University of Missouri, '38
Sodality, '37, '39, '40
Home Economics Club, '37, '39 '40
Delta Phi, '40
Daisy Chain Bearer, '40



Lovely background,—what?

"Pagliacci" without a stage . . .
friendliness, and a sense of humor
that charms all who know her . . .
ready tongue and readier wit . . .
eagerness for fun . . . the heart of
eternal youth . . . that "band-
box" look . . . the blue-eyed doll
you've always wanted . . . a loyal
friend . . .

T H E F E A T U R E D P L A Y E R S

Thirty-nine — Forty

Mary Alice Burmeister



St. Louis, Missouri
A. B. in Music Theory

Mundelein College, Chicago, '38, '39
Sodality, '37, '40
Sigma Beta Mu, '37, '40
Fontbonne Athletic Association, '37
Glee Club, '37
Press Club, '37

Tall, sedate, ever gracious . . . a perfect lady at all times . . . an equestrienne of high repute . . . shy and retiring, but a true sports-woman and lover of fun . . . amiable and cheerful . . . a pleasant companion . . . true to herself and to her friends.



Is that an iron horse we see?

O F N I N E T E E N - F O R T Y

A *Drama* OF NINETEEN

Marian Clark

St. Louis, Missouri

A. B. in English

Who's Who in American Colleges,
'39, '40

Class President, '38

President Press Club, '39

Treasurer Press Club, '38

Corresponding Secretary of Poetry
Club, '39

Student Council, '39

Delta Phi, '39, '40

Sodality, '37, '38, '39, '40

Fontbonne Athletic Association, '37,
'38, '40

Footlights Club, '37, '38

Fontbonne Staff, '40



I don't believe it!

Steadfast and dependable . . .
clear sense of values . . . dancing
eyes . . . shy, reserved . . . sensi-
tive to criticism . . . loyal to the
end . . . keen and lively intelli-
gence . . . the right phrase at the
right time . . . national contest
winner . . . a fixture on the Dean's
Honor Roll!

T H E F E A T U R E D P L A Y E R S

Thirty-nine — Forty

Dorothy Coff



St. Louis, Missouri

A. B. in Dramatic Art

Press Club, '37, '38, '39, '40

Footlights Club, '37, '38, '39, '40

Fontbonne Athletic Association, '37,
'38, '39, '40

Sodality, '37, '38, '39, '40

Secretary-Treasurer of Press Club,
'40

Vice-President of Footlights Club, '40

Matchabelli's Potpourri . . . warm
tropic nights scented with spices
. . . faint sound of a marimba
band . . . flashing dark eyes,
sparkling personality . . . cas-
tanets, rhumbas and whirling
skirts . . . impulsive and gay . . .
tinkling sound of ready laughter
. . . "theatre" to the last curtain!



Try it again.

O F N I N E T E E N - F O R T Y

A *Drama* OF NINETEEN

Kathryn Desmond

East St. Louis, Illinois
A. B. in Dramatic Art

Sodality, '37, '38, '39, '40
Footlights Club, '37, '38, '39, '40
Glee Club, '37, '38
French Club, '37, '38
Poetry Club, '37, '38, '39, '40
Class Treasurer, '39
Senior Maid to May Queen, '40



It's your cue, Kay!

Gentility in modern dress . . . native restraint veiling a genuine interest in everyone and everything . . . setting, an 18th century drawing room by Raymond Scott . . . curious combination of old world charm and modern sophistication stepping from an old print with ease and grace into the World of Tomorrow.

T H E F E A T U R E D P L A Y E R S

Thirty-nine — Forty

Anne Catherine Disch



St. Louis, Missouri
B. S. in Home Economics

May Queen, '40
Prefect of Sodality, '40
Vice-Chairman of Student Council,
'40
Who's Who in American Colleges,
'39, '40
Secretary of Student Association, '38
City Editor of FONT, '39, '40
Class President, '37
Vice-President of College Sodality
Union, '40
Treasurer of Home Economics Club,
'38
Press Club, '37, '38, '39, '40
Delta Phi, '38, '39, '40
Phi Beta Chi, '38, '39

Queen of the May . . . a leader in every undertaking . . . outstanding student and conscientious participant in extracurricular activities . . . Summa Cum Laude . . . Kappa Gamma Pi . . . ardent exponent of Catholic philosophy . . . loyal friend . . . an ideal Fontbonne graduate.



Resting between honors?

O F N I N E T E E N - F O R T Y

A *Drama* OF NINETEEN

Audrey Driscoll

St. Louis, Missouri
A. B. in Economics

Sodality, '37, '38, '39, '40
Fontbonne Athletic Association, '37, '38
International Relations Club, '38, '39, '40
Vice-President of International Relations Club, '40.
Sigma Beta Mu, '37, '38, '39, '40
Class Vice-President, '38
Class Secretary, '40
Student Council, '37
Glee Club, '39, '40



Thinking or sleeping?

A pleasing disposition . . . a ready smile and shining eyes . . . studious, serious, sensible . . . Kappa Gamma Pi . . . cum laude . . . kind, reserved, genteel . . . a student through and through . . . quiet, dependable, efficient . . . knitting an art as well as a hobby.

T H E F E A T U R E D P L A Y E R S

Thirty-nine — Forty

Mae Justin Dufaux



St. Louis, Missouri

A. B. in Fine Arts

Class Treasurer, '38

Secretary of Poetry Club, '39

Spiritual Council, '38, '40

Secretary of Student Association, '39

President of Student Association, '40

Delta Phi, '37, '38, '39, '40

Fontbonne Athletic Association, '37,
'38

Sodality, '37, '38, '39, '40

Poetry Club, '38, '39

Sincere and earnest . . . Student Council President . . . blonde, blue-eyed, gracious . . . the iron hand in a velvet glove . . . smiling charm hiding singleness of purpose . . . collegiate Who's Who . . . a leader in many fields of activity, academic and social . . . reserved, different, charming.



Why so serious?

O F N I N E T E E N - F O R T Y

A *Drama* OF NINETEEN

Angela Hannagan

St. Louis, Missouri

A. B. in English

Editor-in-chief of FONT, '39, '40

Editor of FONTBONNE, '40

Who's Who in American Colleges,
'40

Student Council, '39, '40

Press Club, '37, '38, '39, '40

Secretary of Press Club, '38

Spiritual Council, '39

Poetry Club, '38, '39, '40

Sodality, '37, '38, '39, '40

Footlights Club, '40

FONT Staff, '37, '38

International Relations Club, '39, '40

Fontbonne Athletic Association, '37,
'38, '39



You'll soon have time for that!

Hail to the Chief! . . . roaring presses, extra editions . . . the college version of "Front Page" . . . the essence of dependability . . . determination which surmounts all obstacles . . . executive ability complemented by intelligence . . . loyal and true . . . charter member of the "night owl" special.

T H E F E A T U R E D P L A Y E R S

Thirty-nine — Forty

Anna Lucy Hoffman



Prairie du Chien, Wisconsin
A. B. in History

Sodality, '39, '40
Poetry Club, '40
Press Club, '40
Daisy Chain Bearer, '40
French Club, '39

Intelligent and charming . . . rare combination . . . self-effacing, but decidedly not an introvert . . . eccentric flare . . . socially successful . . . demure . . . clever in a quiet fashion . . . Mendelssohn's Spring Song set to modern swing music.



Wait awhile!

O F N I N E T E E N - F O R T Y

A *Drama* OF NINETEEN

Mary Lou Jostrand

St. Louis, Missouri

A. B. in English

Fontbonne Athletic Association, '37,
'38, '39

Poetry Club, '40

Sodality, '37, '38, '39, '40

Class Vice-President, '37

Maid to May Queen, '40



Lights, action, camera!

Loyal to friends . . . a lover of sports . . . shy and unaffected . . . a conscientious student . . . calm, serene, not easily excited . . . a bit roguish at times . . . always ready for fun, but serious whenever the occasion demands.

T H E F E A T U R E D P L A Y E R S

Thirty-nine — Forty

Ann Marie Kimberley



St. Louis, Missouri
A. B. in Sociology

Sodality, '37, '38, '39, '40

C.S.M.C., '37, '38, '39, '40

International Relations Club, '39, '40

Fontbonne Athletic Association, '37,
'38, '39

Student and honor graduate . . .
the librarian's friend . . . quiet and
withdrawing . . . seldom seen,
never heard . . . efficient in her
own quiet way . . . Kappa Gamma
Pi nominee from Fontbonne . . .
subtle, silent, sapient, scholar.



Keep your eye on the book.

O F N I N E T E E N - F O R T Y

A *Drama* OF NINETEEN

Helen Kleir

East St. Louis, Illinois
B. S. in Chemistry

Sodality, '37, '38, '39, '40
Phi Beta Chi, '39, '40
Spiritual Council, '40
Secretary of Phi Beta Chi, '40



Waiting the call to action?

A potential leader and a willing helper . . . unobtrusive, dignified, dependable . . . a genuine friend . . . sterling character . . . energetic, obliging, refined . . . a cheerful disposition . . . a very talented photographer . . . a person well worth knowing.

T H E F E A T U R E D P L A Y E R S

Thirty-nine — Forty

Irene Kuehner



St. Louis, Missouri
B. S. in Home Economics

Fontbonne Athletic Association, '37
Daisy Chain Bearer, '40
Footlights Club, '40
Home Economics Club, '37, '38, '39,
'40
Delta Phi, '40

Calla lily in the moonlight . . .
gardenias and orchids . . . fragile,
feminine, lovely . . . the quintes-
sence of grace and beauty, espe-
cially behind the wheel of her
convertible . . . nimble-witted . . .
adept with tongue and pen . . .
winsome, refined.



Little girl with a bow.

O F N I N E T E E N - F O R T Y

A *Drama* OF NINETEEN

Matha Lou Maxwell

Tulsa, Oklahoma
A. B. in Spanish

Monte Cassino Junior College, Tulsa,
Okla., '37, '38

International Relations, '39, '40

Poetry Club, '39, '40

Sigma Beta Mu, '39, '40

Sodality, '40

Treasurer of Senior Class, '40

Vice-President of Resident Students'
Association, '40

Chairman of Peace Committee of
Sodality, '40



Are we intruding?

Self-reliant and frank . . . the
strength and beauty of a poplar
. . . nobility of carriage . . . hon-
esty, courage, candor, tenderness
. . . hair of midnight hue . . . deep-
set, glowing eyes . . . clear, liquid
soprano voice . . . soft, western
drawl reflecting the vastness and
beauty of a great country.

T H E F E A T U R E D P L A Y E R S

Thirty-nine — Forty

Mary Emily Mitchell



Kansas City, Missouri

A. B. in Dramatic Art

D'Youville College, Buffalo, N. Y.,
'37, '38

Vice-President of Student Association,
'40

Spiritual Council, '40

Footlights Club, '39, '40

Poetry Club, '39, '40

Sodality, '39, '40

FONT Staff, '40

Who's Who in American Colleges,
'40

Maid for World Wide Sodality May
Day, '40

Star of the show . . . Maxwell Anderson's conception of "Mary of Scotland" . . . a tender, solicitous friend . . . the soul of truth . . . all-seeing blue eyes . . . tall and gracious . . . the very essence of womanhood . . . Kappa Gamma Pi . . . magna cum laude.



Curtain call?

O F N I N E T E E N - F O R T Y

A *Drama* OF NINETEEN

Margaret Mary Nelson

University City, Missouri
B. S. in Home Economics

Home Economics Club, '37, '38, '39, '40
Delta Phi, '37, '38, '39, '40
Sodality, '37, '38, '39, '40
Fontbonne Athletic Association, '37,
'38
Press Club, '40
Student Council, '40
Who's Who in American Colleges, '40
Class Secretary, '39
Treasurer of Delta Phi, '39
Vice-President of Home Economics
Club, '40
Class President, '40



Worrying, Duke?

"Duke" to everyone who knows her . . . president of the senior class . . . regal dignity tempered by friendliness . . . poise, ability . . . brown-eyed, amusing and amused . . . placid and sweetly complacent . . . horsewoman of fictional ability . . . representative of clear-eyed youth.

T H E F E A T U R E D P L A Y E R S

Thirty-nine — Forty

Doris Jane O'Connor



St. Louis, Missouri

B. S. in Biology

Phi Beta Chi, '39, '40

Footlights Club, '39, '40

Delta Phi, '39, '40

Class President, '39

Treasurer of Student Association, '39

An asset in any gathering . . .
stylish . . . a social leader . . .
sweet and refined . . . an indefati-
gable horsewoman . . . beautiful,
shining eyes . . . enviable dimples
. . . a witty conversationalist . . .
appealing personality . . . keen
sense of humor . . . charming and
dignified at all times.



Hold that smile!

O F N I N E T E E N - F O R T Y

A *Drama* OF NINETEEN

Marie Pack

St. Louis, Missouri

A. B. in History

Sodality, '37, '38, '39, '40

French Club, '37, '38

Daisy Chain Bearer, '39

International Relations Club, '40

Fontbonne Athletic Association, '37

Riding Club, '37, '38, '39, '40



Study in black and blonde!

Pulchritude and charm . . . striking blonde . . . oxford glasses and saddles . . . incongruous combination . . . heading up the social ladder . . . **Vogue's** college section, in person . . . a fine companion to those who gain her friendship.

T H E F E A T U R E D P L A Y E R S

Thirty-nine — Forty

Mary Margaret Potts



Parsons, Kansas

A. B. in Sociology

Parsons Junior College, Parsons,
Kansas, '37

President of Resident Students'
Assn., '40

President of International Relations
Club, '40

Vice-President of Mississippi Valley
International Relations Conference,
'40

Member of Student Council, '40

Maid to May Queen, '39

Footlights Club, '39, '40

Vice-President of Press Club, '39

Fontbonne Athletic Association, '38

Sodality, '39, '40

Still waters . . . "um hum"—her
favorite expression . . . dreamy
brown eyes . . . exponent of world
peace, promoting friendly rela-
tions in Fine Arts hall . . . the most
graceful gazelle on the dance floor
. . . affable, agreeable . . . slow,
lazy drawl.



Not exactly a live wire, M. M.

O F N I N E T E E N - F O R T Y

A *Drama* OF NINETEEN

Betty Jess Procter

Atchison, Kansas
A. B. in Sociology

Mount St. Scholastica College, '37,
'38

Footlights Club, '39, '40

International Relations Club, '39, '40

Secretary of International Relations
Club, '40

French Club, '40

Daisy Chain Bearer, '39

Sodality, '39, '40



Oh, Betty, how you can write!

Sunlight and shadow in changing
shades . . . a Chopin caprice . . .
delight in living . . . quality and
value . . . loyal, brown eyes . . .
friendliness and good humor . . .
gracefulness and charm . . . un-
derstanding, considerate, gener-
ous.

T H E F E A T U R E D P L A Y E R S

Thirty-nine — Forty

Catharine Lucille Rozier



St. Louis, Missouri

A. B. in History

Fontbonne Athletic Association, '37, '38

International Relations Club, '37, '38, '39, '40

Vice-President of International Relations Club, '39; Treasurer, '40

Phi Beta Chi, '39, '40

Student Council Representative, '39

Daisy Chain Bearer, '39

Treasurer of Resident Students' Assn., '40

Press Club, '38, '39, '40

FONT Staff, '38, '39

Circulation Manager of FONT, '40

Circulation Manager of FONT-BONNE, '40

Sodality, '37, '38, '39, '40

Droll, hidden humor . . . on-the-spot service . . . capable and reliable . . . the perfect circulation manager . . . a friend in need, ex-member of the Girl Scouts . . . a good deed every day . . . hiding her light under a quiet exterior.



Always the optimist!

O F N I N E T E E N - F O R T Y

A *Drama* OF NINETEEN

Helen Schenk

Clayton, Missouri
A. B. in Philosophy

Sodality, '37, '38, '39, '40

Footlights Club, '37, '38, '39, '40

Fontbonne Athletic Association, '37,
'38



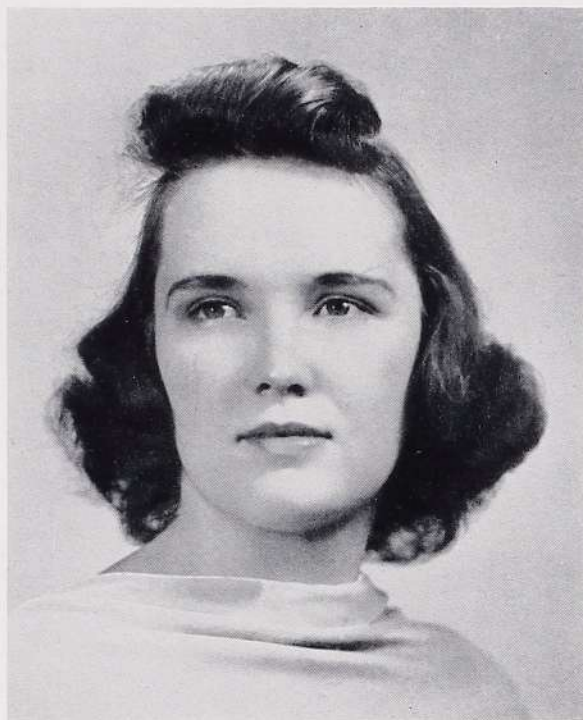
Where's the little Dutch boy?

Lovely and lovable . . . lucky in
love . . . philosopher's delight . . .
familiar in Dutch boy collars and
irremovable coat . . . a willing
worker . . . deep thinker . . . al-
ways fresh and sparkling, see third
finger on the left hand.

T H E F E A T U R E D P L A Y E R S

Thirty-nine — Forty

Mary Katherine Jammany



St. Louis, Missouri

A. B. in Sociology

Sodality, '37, '38, '39, '40

French Club, '37, '38

International Relations Club, '38, '39, '40

Daisy Chain Bearer, '37

Class Vice-President, '39

Treasurer of Student Association, '40

Fontbonne Athletic Association, '37

Riding Club, '40

Gay, unconcerned, casual . . . forthright opinions belie the bows in her hair . . . ready to do and dare in defense of what she knows is right . . . dancing eyes always on the lookout for fun . . . a dude rancher on horseback, but a sport to the last spill!



Keep a tight grip on the books!

O F N I N E T E E N - F O R T Y

A *Drama* OF NINETEEN

Josephine Rose Ilapek

St. Mary's, Missouri
A. B. in English

Sodality, '37, '38, '39, '40
French Club, '40
International Relations Club, '40
Riding Club, '40
Poetry Club, '40
Maid to May Queen, '40



Trying to make En. 187 on time?

Wise, just, sensible . . . attractive, vivacious, charming . . . varied interests . . . a genuine friend in need . . . "advice preferred" without sugar coating . . . common sense hiding the affection she reserves for those who know her well.

T H E F E A T U R E D P L A Y E R S

Thirty-nine — Forty

Mary Wand



Litchfield, Illinois
B. S. in Home Economics

Vice Prefect of Sodality, '40
Sodality, '37, '38, '39, '40
Spiritual Council, '38, '39, '40
President of Home Economics Club,
'40
Student Council, '39
Who's Who in American Colleges, '40
Maid for World Wide Sodality May
Day, '40
Treasurer of Resident Students'
Association, '39
Phi Beta Chi, '39, '40

Dancing blue eyes and a baby
face . . . sunlight and laughter . . .
Who's Who nominee . . . lively and
temperamental . . . spiritual lead-
er . . . gregarious, sometimes too
much so . . . joy of youth and health
. . . bubbling over with merriment.



Better think it over, Mary!

O F N I N E T E E N - F O R T Y

A *Drama* OF NINETEEN

Daryl Wenige

St. Louis, Missouri
B. S. in Home Economics

Sodality, '37, '38, '39, '40

Home Economics Club, '37, '38, '39,
'40

Secretary of Home Economics Club,
'40

C.S.M.C., '37, '38, '39

Fontbonne Athletic Association, '37,
'38, '39

Poetry Club, '38, '39

Sigma Beta Mu, '38, '39

International Relations Club, '38, '39

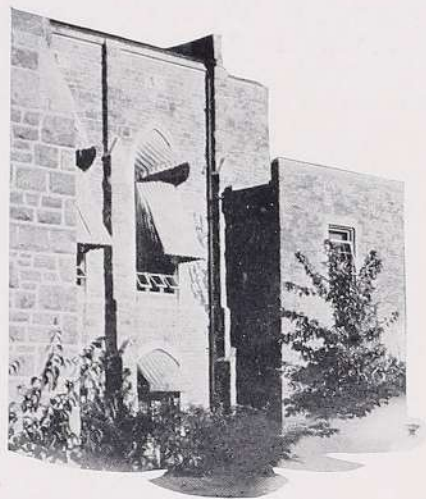


Looking into the future.

Skilled in the art of dressmaking
... a lover of good music ... frank
in expressing her opinions ...
rather serious and reserved, but
enjoys a good laugh ... kind and
gentle in manner ... a lady,
through and through.

T H E F E A T U R E D P L A Y E R S

Thirty-nine — Forty



SISTER MARGARET ELLEN GLEASON, C.S.J.

Saint Louis, Missouri

A. B. in Education

SISTER ANNA RITA HIGGINS, C.S.J.

Saint Louis, Missouri

A. B. in Music Theory

SISTER ROSE ANTONIA MOLLOY, C.S.J.

Saint Louis, Missouri

A. B. in Education

Honors

Anne Catherine Disch, Summa Cum Laude, Kappa Gamma Pi

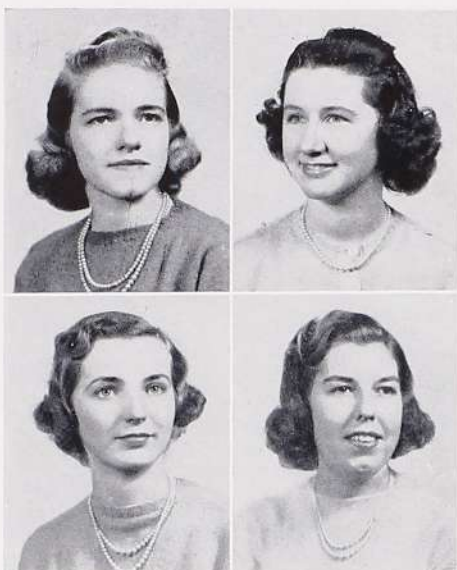
Mary Emily Mitchell, Magna Cum Laude, Kappa Gamma Pi

Audrey Driscoll, Cum Laude, Kappa Gamma Pi

Ann Marie Kimberley, Cum Laude, Kappa Gamma Pi

O F N I N E T E E N - F O R T Y

Class of 1941



Top Row: D. Barada, M. Miller
Bottom Row: B. A. LaBarge, M. Tracy

Dorothy Barada
President

Margaret Miller
Vice-President

Betty Ann LaBarge
Secretary

Mary Tracy
Treasurer

Marifrances Bagley
Kansas City, Missouri

Dorothy Barada
St. Louis, Missouri

Dorothy Baumstark
Avondale Estates, Georgia

Irene Boland
St. Louis, Missouri

Betty Bourk
Kansas City, Missouri

Dorothy Bussmann
St. Louis, Missouri

Alice Cejka
St. Louis, Missouri

Mary Concannon
St. Louis, Missouri



Top row: A. Swanger, R. Hayden, I. Boland, P. Higgins
Bottom row: R. Tlapak, B. Bourk, M. Concannon, B. Murphy

Helen Dillon
St. Louis, Missouri

Ruth Duerr
Perryville, Missouri

Geraldine Duggan
St. Louis, Missouri

June Fleming
St. Louis, Missouri

Mary Ellen Flickinger
Greenfield, Iowa

Helen Guyol
St. Louis, Missouri

Rosemary Haward
Kansas City, Missouri

Rosemary Hayden
St. Louis, Missouri

Patricia Higgins
Webster Groves, Missouri

Lenore Klaus
East St. Louis, Illinois

Betty Ann LaBarge
Normandy, Missouri

Mary Lynch
Kansas City, Missouri

Mary Margaret Manning
University City, Missouri

Isabelle Mansour
Lake Village, Arkansas

Margaret Miller
Normandy, Missouri

Betty Murphy
Kansas City, Missouri

Patricia Potter
Lafayette, Indiana

June Schafer
University City, Missouri

Dolores Schulte
St. Louis, Missouri

Virginia Sheehan
St. Louis, Missouri

Helen Stiers
St. Louis, Missouri

Mary Ellen Sullivan
St. Louis, Missouri

Anne Swanger
St. Louis, Missouri

Rose Tlapak
St. Mary's, Missouri

Mary Elizabeth Tracy
St. Louis, Missouri

Alice Voegeli
St. Louis, Missouri



Top row: M. Manning, A. Voegeli, L. Klaus, M. Lynch, M. E. Sullivan, V. Sheehan
Middle row: H. Stiers, I. Mansour, D. Baumstark, A. Cejka, G. Duggan, R. Duerr
Bottom row: D. Schulte, H. Dillon, H. Guyol, P. Potter, R. Haward, M. E. Flickinger

Class of 1942

Mary Stebbins

President

Dorothea Wells

Vice-President

Jane Duddy

Secretary

Aleen Block

Treasurer



First row: M. Stebbins, M. Fassero, S. Muller, M. A. Luth, A. Allen
 Second row: D. Wells, H. Hoeynck, J. Beckley, G. Milton, M. J. Forestner
 Third row: J. Duddy, R. Lumini, L. R. Doerr, L. O'Connell, L. Burns
 Fourth row: A. Block, M. Lynch, A. Downs, R. Mormino, E. Hoffman

Adelaide Allen
 New Madrid, Missouri

Helen Marie Badaracco
 University City, Missouri

Mary Bass
 Clayton, Missouri

Jo Beckley
 Sheridan, Wyoming

Aleen Block
 St. Louis, Missouri

Patricia Burke
 St. Louis, Missouri

Lorraine Burns
 St. Louis, Missouri

Lela Rose Doerr
 St. Louis, Missouri

Arline Downs
 Sedalia, Missouri

Jane Duddy
 St. Louis, Missouri

Marguerite Fassero
 Benld, Illinois

Nancy Fiorita
 St. Louis, Missouri

Loraine Flynt
 Atlanta, Georgia

Mary Jane Forestner
 St. Louis, Missouri

Dorothy Frank
 St. Louis, Missouri

Florence Geist
 St. Louis, Missouri

Betty Gidley
 Bonne Terre, Missouri

Helen Hoeynck
 St. Louis, Missouri

Edith Hoffman
 St. Louis, Missouri

Evelyn Hurley
 St. Louis, Missouri

Rosemary Irwin
 St. Louis, Missouri

Joseph Lorenz
 Clayton, Missouri

Rena Lumini
 St. Louis, Missouri

Mary Ann Luth
 Webster Groves, Missouri



First row: J. Lorenz, F. Geist, J. M. Simon, P. Burke, M. A. Maguire, R. A. Wilson
 Second row: R. McNamara, H. M. Badaracco, L. Flynt, M. Mosberger, N. Fiorita, B. Beckemeyer
 Third row: R. Irwin, R. Ward, D. Frank, B. Gidley, R. Rehme, L. Vachon
 Fourth row: M. Riedel, M. Bass, M. Meyer, M. Sansone, M. R. Wahler, E. Hurley

Margaret Lynch
 Atlanta, Georgia

Mary Alice Maguire
 Canton, Illinois

Mary Meyer
 St. Louis, Missouri

Grace Milton
 Kirkwood, Missouri

Rose Marie Mormino
 Hillsboro, Illinois

Marion Mosberger
 St. Louis, Missouri

Suzanne Muller
 St. Louis, Missouri

Ruth McNamara
 St. Louis, Missouri

Lucille O'Connell
 Normandy, Missouri

Rita Rehme
 University City, Missouri

Mary Riedel
 Hannibal, Missouri

Marie Rotter
 Clayton, Missouri

Marie Sansone
 University City, Missouri

Virginia Schindler
 St. Louis, Missouri

Jane Marie Simon
 St. Louis, Missouri

Mary Stebbins
 St. Louis, Missouri

Louise Vachon
 Hambleton, West Virginia

Mary Rita Wahler
 Clayton, Missouri

Rosemary Ward
 University City, Missouri

Dorothea Wells
 Webster Groves, Missouri

Ruth Ann Wilson
 University City, Missouri

Ruth Frances Wynn
 Maplewood, Missouri

Class of 1943

Juliette Fogerty
President

Barbara Raupp
Vice-President

Jane Kostedt
Secretary

Mary Alice Guelker
Treasurer

Lorraine Ash
Forrest City, Arkansas

Olive Baer
St. Louis, Missouri

Betty June Baker
Clayton, Missouri

Evalynn Baker
Clayton, Missouri

Gayle Bardgett
Clayton, Missouri

Marcella Barry
St. Louis, Missouri

Anneliese Bauer
St. Louis, Missouri

Marjorie Boeving
Poplar Bluff, Missouri

Betty Boll
Maplewood, Missouri

Mary Elizabeth Brandt
St. Louis, Missouri

Rosemary Britt
St. Louis, Missouri

Margaret Bussmann
St. Louis, Missouri

Carlotta Cafferata
University City, Missouri

Catherine Callier
St. Louis, Missouri

Mary Alice Chandler
Houston, Texas

Louise Colombo
St. Louis, Missouri

Rosemary Connell
St. Louis, Missouri

Yvonne Cornu
Atlanta, Georgia

Anne Costello
St. Louis, Missouri



First row: J. Fogerty, A. E. Mapel, M. A. Chandler, A. Bauer, I. L. Moore

Second row: B. Raupp, M. Rotter, R. McLean, R. Connell, M. Metzger

Third row: J. Kostedt, R. Quirk, L. Ash, M. A. Killian, S. Mastro

Fourth row: M. A. Guelker, M. Reddinger, M. L. Menges, M. Howard, B. Godfrey

Fifth row: M. Finney, C. Hederman, R. Galanis, G. Hall, M. V. Richard

Mary Costello
Indianapolis, Indiana

Dorothy Daniels
Terre Haute, Indiana

Helen Dowling
St. Louis, Missouri

Winifred Ellinwood
St. Louis, Missouri

June Farrell
Kansas City, Missouri

Marjorie Finney
St. Louis, Missouri

Dorothy Foerster
St. Louis, Missouri

Juliette Fogerty
University City, Missouri



First row: V. Kommer, M. E. Brandt, M. E. Neill, B. Boll, R. Igoe, C. Catterata
 Second row: V. Schindler, M. Costello, O. Baer, G. Neaf, A. Grosse, L. Gewinner
 Third row: D. Quante, W. Ellinwood, M. Leahy, E. Numainville, K. Hernan, L. Colombo
 Fourth row: G. Oink, M. Barry, V. Luth, J. Owen, J. Kommer, A. Murphy
 Fifth row: R. Britt, A. Naumann, M. Marlow, J. Owen, M. A. Roche, M. Weber

Rosemary Galanis
 St. Louis, Missouri

Mary Ganley
 St. Louis, Missouri

Jane Gardner
 Clayton, Missouri

Loretta Gewinner
 St. Louis, Missouri

Bernice Godfrey
 St. Louis, Missouri

Alvera Grosse
 Webster Groves, Missouri

Mary Alice Guelker
 St. Louis, Missouri

Grace Hall
 St. Louis, Missouri

Cecilia Hederman
 St. Louis, Missouri

Mary Jane Held
 St. Louis, Missouri

Katherine Hernan
 St. Louis, Missouri

Betty Higgins
 Webster Groves, Missouri

Class of 1945

Ann Houlihan
St. Louis, Missouri

Mary Howard
St. Louis, Missouri

Rainalda Igoe
St. Louis, Missouri

Mary Ann Killian
Portageville, Missouri

Olivette Kissel
St. Louis, Missouri

Rica Knaapen
Sturgeon Bay, Wisconsin

Jayne Kommer
St. Louis, Missouri

Virginia Kommer
St. Louis, Missouri

Jane Kostedt
St. Louis, Missouri

Rita Land
West Frankfort, Illinois

Margaret Leahy
St. Louis, Missouri

Virginia Luth
Webster Groves, Missouri

Helen Macauley
St. Louis, Missouri

Ann Elizabeth Mapel
St. Louis, Missouri

Margaret Marlow
Murphysboro, Illinois

Sylvia Mastro
Richmond Heights, Missouri

Mary Louise Menges
St. Louis, Missouri

Marian Metzger
St. Louis, Missouri

Ida Louise Moore
Harrisburg, Illinois

Audrey Murphy
St. Louis, Missouri

Lenore McCarthy
St. Louis, Missouri

Rosemary McLean
St. Louis, Missouri

Audrey Naumann
Normandy, Missouri

Genevieve Neaf
University City, Missouri

Mary Elizabeth Neill
St. Louis, Missouri

Evelyn Numainville
Hot Springs, Arkansas

Geraldine Oink
St. Louis, Missouri

Jane Owen
St. Louis, Missouri



First row: M. Bussmann, H. Dowling, V. Raaf, O. Kissel
Second row: D. Daniels, Y. Cornu, B. Higgins, R. Knaapen
Third row: M. Boeving, M. A. Schneblin, A. Houlihan, H. Macauley
Fourth row: J. Farrell, P. Walsh, M. J. Held, C. Callier

Jean Owen
St. Louis, Missouri

Dorothy Quante
Normandy, Missouri

Rosemary Quirk
St. Louis, Missouri

Victoria Raaf
St. Louis, Missouri

Barbara Raupp
Decatur, Illinois

Mary Reddinger
St. Louis, Missouri

Mary Virginia Richard
St. Louis, Missouri

Mary Alice Roche
St. Louis, Missouri

Mary Alice Schneblin
St. Louis, Missouri

Dolores Walker
St. Louis, Missouri

Patricia Walsh
St. Louis, Missouri

Marian Weber
St. Louis, Missouri

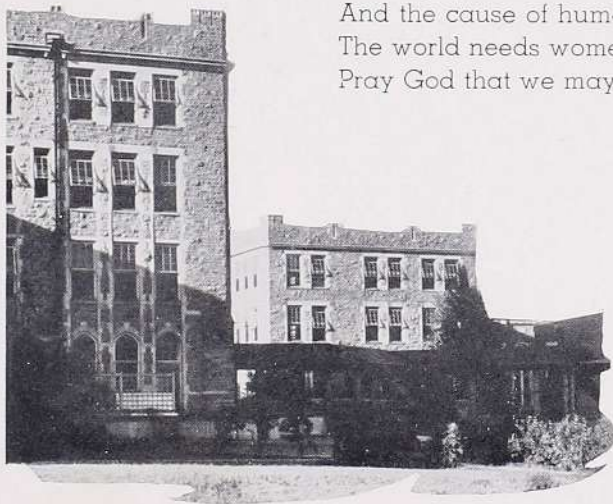


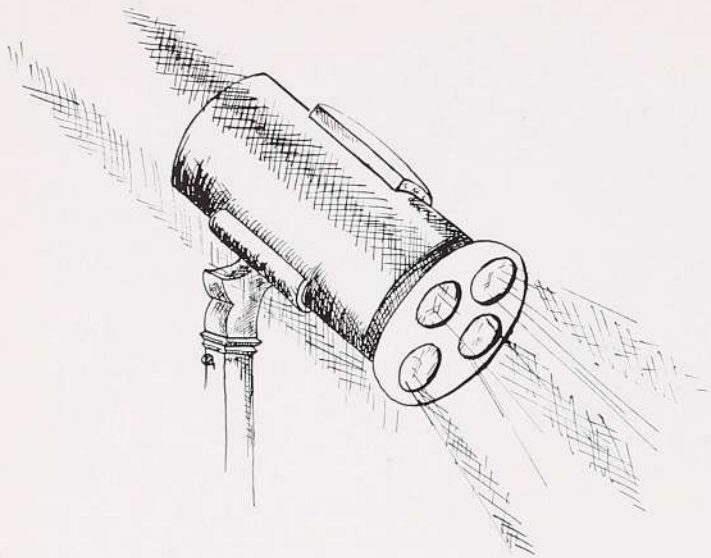
AVE ATQUE VALE!

Because fact is built of vision,
Because faith makes all things whole,
We have prayed that our eyes be single,
And we swerve not from our goal.
Look! on the grass-clad hilltop
Where maple and chestnut grow,
Look! to the hall of the future
Where shineth truth's lasting glow.

Embodied in steadfast granite,
Enthroned under heaven's blue,
As clear as the sky in the sunshine,
The dream that we dared has come true.
We have fashioned its stately cloisters
Where Wisdom makes her home,
And its stemlike columns blossom
Into arched and sculptured dome.

In these halls where we have lingered,
The future is fashioned today.
What we think in our hearts we shall be,
We create what we dream and we pray.
So we pay our debt to the future,
And the cause of humanity;
The world needs women of courage,
Pray God that we may be!





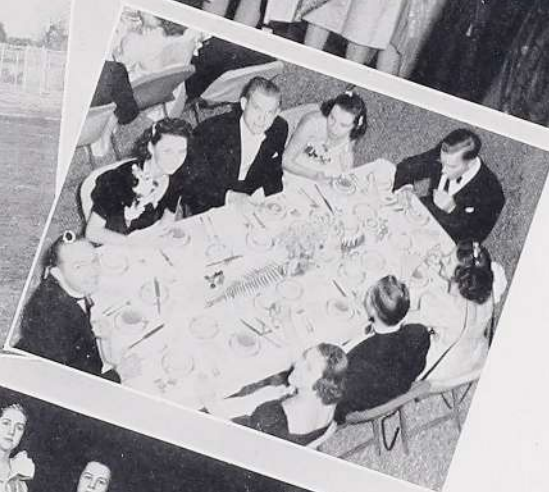
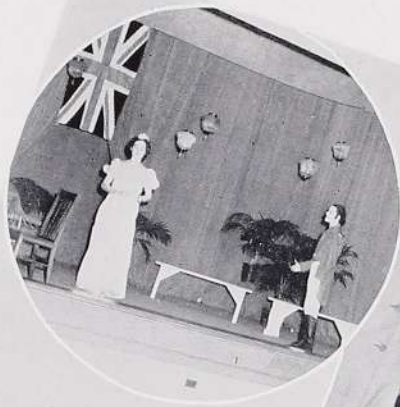
Act Two . . .

The Social Whirl

Realizing that a college is a place for the education of the complete individual, Fontbonne has endeavored to provide her students with many opportunities for recreation and culture. The drama of college life soon becomes a memory, the cast is dismembered, and the plot is forgotten, but the invaluable experiences gained through extra curricular activities have left an indelible mark upon the actors, enabling them to better shape the plot of their own life dramas.

Formal and informal dinners, parties, teas, picnics, May Day, the annual horse show, and various club projects are highly desirable and instrumental in developing that elusive quality known as poise, ever a symbol of the true Fontbonne girl.

There is a definite value to be derived from these "scenes between the acts," when they are filled with the spirit of gainful occupation, of courtesy, of self-respect, and of refinement becoming to the young Catholic girl.



Activities OF NINETEEN

Catholic Students' Mission Crusade



Group picture of C.S.M.C. members



A. Cejka, M. Concannon, L. Flynt

OFFICERS

MARY CONCANNON	- - - - -	President
ALICE CEJKA	- - - - -	Vice-President
LORAIN FLYNT	- - - - -	Secretary-Treasurer

The Catholic Students' Mission Crusade at Fontbonne is as old as the school itself. Its work is to assist priests and religious in the work of bringing God to pagans in foreign and home missions. This is accomplished by cake sales, saving of stamps and tin-foil, and especially through the generous contributions to the mite-boxes.

This year the most extensive projects were the adoption of a priest-brother of the Servants of the Most Holy Trinity; the making of scrapbooks of pictures that appeal to children, for distribution to hospitals at Christmas; and a book and religious article drive for the missions in China to increase their depleted library.

Thirty-nine — Forty

Classical Club



Seated: M. Sansone, R. M. Marmino, S. Muller, G. Duggan, A. Voegeli, H. Guyol
Standing: E. Hurley, R. Hayden, M. V. Richard, M. R. Wahlert, R. Connell, J. M. Simon,
A. Bauer, A. Murphy

The Classical Club of St. Louis University consists of four units: Fontbonne, Maryville, St. Louis University, and Webster. Since meetings are held at the various schools, the members are afforded the opportunity of visiting the corporate colleges and of becoming acquainted with other students.

Membership is not limited to students of the classics, but is open to anyone interested in classical subjects. At each meeting the members from various units take part in the program. The theme of the programs this year was classical poetry considered in its different phases.

OFFICERS

GERALDINE DUGGAN - - - President, Fontbonne
LEO KAISER - Vice-President, St. Louis University
EMILY BROWN - - - - - Secretary, Maryville
ELIZABETH POLLMANN - - - Treasurer, Webster



Geraldine Duggan, President

Activities OF NINETEEN

Delta Phi



M. M. Nelson, M. Dufaux, A. Swanger, A. Downs,
D. O'Connor, D. Schulte, J. Schafer, J. Bristol, C. Disch



J. Schafer, Miss Troemel
A. Swanger, A. Downs

OFFICERS

JUNE SCHAFFER	President
ARLINE DOWNS	Secretary
ANNE SWANGER	Treasurer

Delta Phi was organized in 1934 under the guidance of Mrs. Hazel L. Weber for the purpose of furthering the art interest at Fontbonne, and to encourage the study and appreciation of art among its members. Membership is limited to students who have fulfilled the obligations of pledges and who can meet the qualifications stated in the constitution.

In September, all students interested in art are invited to attend the business and work meetings, and to participate in the crafts or other activities sponsored by the club. These have included projects such as block printed Christmas cards, a puppet show, etched metal trays, wooden beach shoes, belts, handbags, arrangement of the annual art exhibit, and movies on art.

New members are initiated in the spring at the annual Bohemian Supper. Miss Gertrude Troemel, head of the art department, is the moderator of the club.

Thirty-nine — Forty

Fontbonne Athletic Association



F. A. A. group picture taken in the gymnasium

The purpose of the Fontbonne Athletic Association is to arouse the interest of the students in sports and to instill in them the ideals of good sportsmanship and fair play. Its aim is to afford the members the opportunity to participate in their favorite sports and to achieve perfection of form in those sports.

Some of the activities of the club have been the presentation of a penny circus, and competitive events in basketball, field hockey, tennis, swimming, ping-pong, badminton and horseback riding.

The main events of the spring season are the track meet and the Horse Show. The latter is one of the most outstanding events of the school year.

OFFICERS

BETTY ANN LaBARGE - - - - - President
MARY JANE FORESTNER - - - - - Vice-President
RITA REHME - - - - - Secretary
LORAIN FLYNT - - - - - Treasurer



Seated: M. Tracy, H. Guyol, B. A. LaBarge,
L. Flynt, M. J. Forestner
Kneeling: Miss Willis, R. Rehme

Activities OF NINETEEN

The Font



Standing: E. Hurley, R. Connell, E. Hoffmann, A. Murphy, M. Concannon, M. V. Richard, G. Duggan, A. Block, M. Tracy, H. Guyol, K. Disch
Seated: C. Rozier, B. Bourk, D. Coff, A. Hannagan, M. Mitchell, D. Barada



G. Duggan, A. Hannagan,
M. Concannon

EXECUTIVE STAFF

ANGELA HANNAGAN	Editor
KAY DISCH	City Editor
EVELYN HURLEY	Features
BETTY BOURK	Features
MARY V. RICHARD	Exchanges
GERALDINE DUGGAN	Business Manager
HELEN GUYOL	Business Staff
ALEEN BLOCK	Business Staff
DOROTHY FRANK	Business Staff
CATHARINE ROZIER	Circulation Manager
MARY CONCANNON	Make-Up Editor

The FONT, semi-monthly student newspaper, is now in its fourteenth consecutive year of publication. The FONT is a member of the Associated Collegiate Press, from which it recently received a second-class honor rating. It is also a member of The Catholic School Press Association and the Secretariat International de Presse Universitaire Catholique.

The FONT is the voice of the student body, the voice of Fontbonne, the voice of Catholicity. Student editors, reporters, and assistants give generously of their time, working far into the night, supplementing the activity of the journalism classes. The staff representatives realize that the Catholic collegiate press has a definite responsibility to spread the Faith, and to conduct a lay apostolate among its readers.

Thirty-nine — Forty

Fontbonne



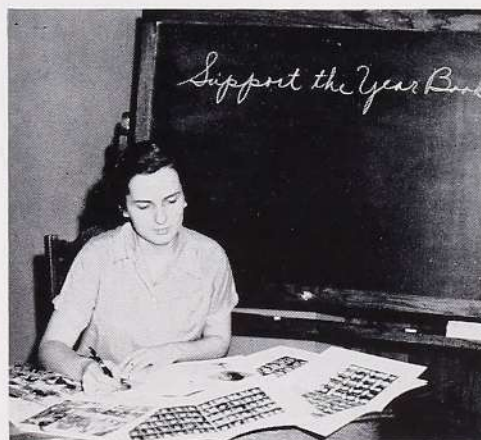
Standing: C. Rozier, A. Block, H. Guyol
Seated: B. Bourk, M. Concannon, A. Hannagan, G. Duggan

For the past few years, Fontbonne students have been interested in producing a year book which would reflect the traditions of the college. At the beginning of the current school year, the administration gave permission to the FONT staff to conduct a survey throughout the school to ascertain how many students would support the project. As a result of this campaign, the FONTBONNE of 1939-40 came into being.

The name of FONTBONNE was selected for the year book because it is so intimately connected with the history of the Sisters of St. Joseph of Carondelet. It is the name which symbolizes the ideals, the loyalty, and the enterprise of our students.

STAFF

ANGELA HANNAGAN	- - - - -	Editor
MARY CONCANNON	- - - - -	Assistant Editor
ALEEN BLOCK	- - - - -	Photo Editor
BETTY BOURK	- - - - -	Features
GERALDINE DUGGAN	- - - - -	Business Manager
HELEN GUYOL	- - - - -	Advertising Manager
CATHARINE ROZIER	- - - - -	Circulation Manager
MARIAN CLARK	- - - - -	Features
ROSEMARY HOWARD	- - - - -	Features



Angela Hannagan, Editor

Activities OF NINETEEN *Footlights Club*



First Row: M. Mitchell, B. Procter, C. Aylward, M. A. Maguire, E. Hurley,
J. M. Simon, M. R. Wahlert, D. O'Connor
Second Row: M. Conannon, A. Hannagan, M. M. Potts, D. Coff, K. Desmond
Third Row: D. Frank, M. Tracy, R. Hayden



R. Hayden, D. Coff, C. Aylward, M. Tracy

OFFICERS

CATHERINE AYLWARD	- - - - -	President
DOROTHY COFF	- - - - -	Vice-President
MARY TRACY	- - - - -	Secretary
ROSEMARY HAYDEN	- - - - -	Treasurer

To create an active interest in good drama and to encourage talent among its members are the objectives of the Footlights Club.

Each year the club presents a fall play in the Fontbonne Little Theatre, and sponsors a spring play staged on the campus in the lovely setting provided by nature. This year the fall presentation was James M. Barrie's "Quality Street", and William Shakespeare's "Twelfth Night" was selected for presentation on June 4. Throughout the year the club presents one-act plays for student assemblies.

One of the most important activities is the annual presentation of the senior recitals. Dramatic majors give these as their theses. This year Virginia Salia presented Philip Barrie's "Holiday"; Mary Mitchell gave Maxwell Anderson's "Mary of Scotland"; and Catherine Aylward presented George Bernard Shaw's "St. Joan."

Thirty-nine — Forty

French Club



First Row: E. Hurley, J. Beckley, B. Procter, A. Voegeli, G. Duggan
Second Row: B. Raupp, E. Numainville, S. Muller, I. Boland, H. Guyol
Standing: M. V. Richard, J. Fogerty, M. J. Held

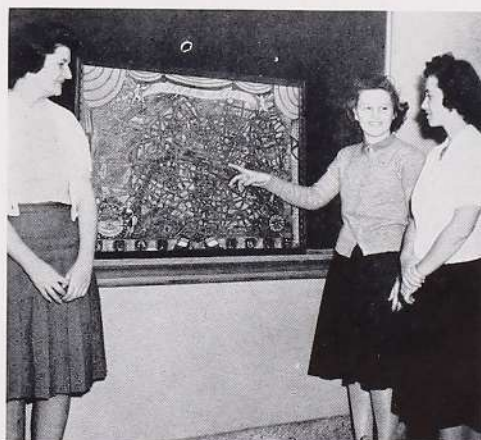
The French Club has definitely outlined in its Constitution its "raison d'être." Through its varied activities it seeks to acquaint the members with the social and artistic civilization of France and to encourage each in acquiring a certain degree of conversational ability.

The program of the club included visits to Paris, Lourdes, Lisieux and Rouen through the medium of pictures, lectures and slides. An outstanding event of the year was the showing of two French sound films, "Les Précieuses Ridicules" by Molière and "Les Deux Couverts" by Sacha Guitry. Thus the contrast between a Seventeenth Century and a Contemporary drama was interestingly noted.

Meetings are conducted in French, in an informal manner, to give each member of the French group an opportunity to test her conversational ability.

OFFICERS

ALICE VOEGELI	- - - - -	President
GERALDINE DUGGAN	- - - - -	Vice-President
HELEN GUYOL	- - - - -	Secretary
MARIAN MOSBERGER	- - - - -	Treasurer



H. Guyol, A. Voegeli, G. Duggan

Activities OF NINETEEN

Glee Club



First Row: M. Chandler, R. Galanis, R. Marmino, M. Maxwell, M. Sansone, L. Ash, A. Voegeli
 Second Row: M. Riedel, B. Gidley, A. Cejka, A. Murphy, M. Lynch, D. Baumstark, L. Maguire,
 G. Duggan, B. Boll, L. Vachon

OFFICERS

MARIE SANSONE	President
DOROTHY BAUMSTARK	Vice-President
ALICE CEJKA	Librarian

The two-fold purpose of the Fontbonne Glee Club is the promotion and enjoyment of good vocal music and the furthering of an appreciation of the liturgical music of the church.

The members gave their first nationwide broadcast for the "Church of the Air" program over the Columbia network during the past year.

During the Music Festival in May, the club gave a recital in conjunction with the Ensemble Class. Members of the group sing the High Mass and Benediction on College Day, as well as Benediction for Baccalaureate and Commencement Days. They also sing at all of the major Sodality functions throughout the year, and at the plays presented by the Footlights Club. Annually the Glee Club members participate in the city-wide Christmas Carol Association program.

Thirty-nine — Forty

Home Economics Club



A group meeting of the Home Economics Club

The Fontbonne Home Economics Club was founded in 1936, and was immediately affiliated with both the state and national Home Economics Students' Clubs. The purpose for which the club was established was to bring faculty and students into closer contact, and to acquaint the students with individuals prominent in the field of Home Economics and with their activities. The club achieves these aims through speakers, discussions, and projects designed to stimulate the social graces and social adaptability of the students.

During the past year the club has sponsored many activities including a tea for the freshmen, a Christmas party, the annual Homecoming, the Covered Dish party for alumnae members of the department, and the preparations for the faculty tea.

OFFICERS

MARY WAND	President
MARGARET MARY NELSON	Vice-President
DARYL WENIGE	Secretary
MARY STEBBINS	Treasurer



M. M. Nelson, D. Wenige, M. Wand, M. Stebbins

Activities OF NINETEEN International Relations Club



Seated: B. Murphy, M. M. Lynch, A. M. Kimberly, A. Cjeka, R. Duerr, M. L. Maxwell,
D. Bussmann, B. J. Procter
Standing: D. Baumstark, M. E. Flickinger, A. Hannagan, C. Rozier, M. M. Potts, M. A. Aselin,
A. Driscoll, H. Guyol



C. Rozier, A. Driscoll, M. Potts, B. Procter

OFFICERS

MARY MARGARET POTTS - - - - - President
AUDREY DRISCOLL - - - - - Vice-President
BETTY JESSE PROCTER - - - - - Secretary
CATHARINE ROZIER - - - - - Treasurer

The International Relations Club is an organ for those interested in the fields of sociology and economics. It is affiliated with the Carnegie Endowment for International Peace and its faculty moderator, Mr. Clemens, is a member of the Executive Committee of the Greater St. Louis Peace Committee.

The club's activities consisted of discussions and lectures on pertinent international and social problems. Throughout the year the club posted weekly radio bulletins of the vital topics of the day. Mary Margaret Potts, official representative of the club at the Mississippi Valley International Relations Club Conference, at Winfield, Kansas, was elected Vice-President of the Conference for the coming year.

Thirty-nine — Forty

Phi Beta Chi



Standing: M. Willet, M. S. Stebbins, C. Esser, D. Schulte, M. Wand, L. Flynt, M. Riedel, M. Lynch,
M. R. Wahlert, J. Duddy
Seated: C. Rozier, H. Izard, D. Moyle, L. Klaus, H. Kleir, B. La Barge, K. Disch, D. O'Connor,
D. Baumstark, J. O'Connell, C. Kenny

Membership in Phi Beta Chi is limited to Alumnae and Juniors and Seniors who major or minor in Chemistry, Biology, or Physics. Eligibility in the Sophomore year may be obtained only where strong evidence is given of superior scholarship.

Phi Beta Chi has for its purpose a fostering of an appreciation for the sciences. It takes note each year of the outstanding Freshmen in Biology and Chemistry classes. Recognition of this fact is shown by having the names of these students engraved on the plaque especially designed for this purpose. These honor students too are guests of the club at its annual luncheon in May. Congratulations this year go to Barbara Raupp for Chemistry and Audrey Murphy for Biology. Rica Knaapen and Betty Higgins received honorable mention.

Phi Beta Chi holds charter membership in the Missouri Academy of Science.

OFFICERS

DOROTHY MOYLE	President
MADELINE DAWKINS	Vice-President
HELEN KLEIR	Secretary
HARRIET IZARD	Treasurer



H. Kleir, D. Moyle, H. Izard

Activities OF NINETEEN

Poetry Society



First row: K. Desmond, H. Guyol, I. Boland, M. Tracy, M. Sansone, A. Voegeli, R. Hayden,
 E. Hurley, A. Cejka
 Second row: C. Aylward, M. Maxwell, M. L. Jostrand, B. Murphy, R. Marmino, S. Mueller
 Third row: A. Murphy, R. Connell, M. Mitchell, A. Hannagan, M. Concannon, B. Bourk, D. Barada



I. Boland, M. Sansone, M. Tracy,
 A. Cejka, H. Guyol

The Fontbonne Poetry Society was granted its charter in February, 1936, after the approval of its constitution by the Catholic Poetry Society of America in New York City. Our society bears the distinction of being the first such college unit organized and chartered in St. Louis. For five years the Fontbonne Poetry Society has enthusiastically carried out the idea of the central Society, and has worked for a greater knowledge of our Catholic poetry.

Under the able leadership of the faculty adviser and with the earnest efforts of the members, our society has done much in accomplishing its ideals. The aims are simple but important: to foster an appreciation of all fine poetry, especially Catholic poetry; to awaken an interest in literature, not merely for its pleasure, but for the cultural value to be derived therefrom.

OFFICERS

ALICE CEJKA	- - - - -	President
IRENE BOLAND	- - - - -	Vice-President
MARIE SANSONE	- - - - -	Recording Secretary
HELEN GUYOL	- - - - -	Corresponding Secretary
MARY TRACY	- - - - -	Treasurer

Thirty-nine — Forty

Press Club



Standing: B. Bourk, M. Concannon, M. V. Richard, R. Connell, M. Tracy, A. Block, D. Barada, A. Murphy, M. Potts, C. Rozier, D. Bussmann, G. Duggan, M. Wand, E. Hoffmann
Seated: H. Guyol, A. Hannagan, M. Mitchell, A. Disch, A. Bauer, B. Higgins, E. Hurley, D. Coff

The Press Club is one of the most active and important clubs at Fontbonne. In addition to its primary aim of securing public recognition for Fontbonne, the club works to further an interest in journalism and to give its members an appreciation and understanding of the ethics of the profession. The club wishes to inculcate in its members the right moral principles of newspaper work.

At the monthly meetings of the Press Club, staff members of local newspapers discuss the various aspects of journalism. The social activities this year included a Treasure Hunt, a "Come As a Song" party, and supper parties, as well as visits to local newspaper plants.

OFFICERS

HELEN GUYOL - - - - - President
DOROTHY BUSSMANN - - - - - Vice-President
DOROTHY COFF - - - - - Secretary-Treasurer



D. Bussmann, D. Coff, H. Guyol

Activities OF NINETEEN
Resident Students' Association



Foreground: E. Numainville, B. Murphy, M. M. Lynch, A. Downs
Background: B. Raupp, R. Duerr, A. Allen, L. Maguire, M. Boeving, B. Beckemeyer



C. Rozier, D. Baumstark, M. M. Potts,
M. L. Maxwell

OFFICERS

MARY M. POTTS	- - - - -	President
MATHA LOU MAXWELL	- - - - -	Vice-President
DOROTHY BAUMSTARK	- - - - -	Secretary
CATHARINE ROZIER	- - - - -	Treasurer

The Resident Students' Association is an organization designed to promote closer harmony among the resident students.

Various social activities are held throughout the school year. Some of the highlights of the season are the formal birthday dinners given monthly, and the formal dinners held in the spring and fall in resorts in and around St. Louis. This year the site of the fall dinner was the Hotel Jefferson. The spring dinner was enjoyed by all amid the surroundings of the Meadowbrook Country Club.

Buffet suppers and picnics are given quite frequently. The first buffet supper this year was followed by a supper at Town Hall. Farewell dinners are an occasion for enjoyment both at Christmas and at the end of the year, when corsages are presented to the Seniors.

Thirty-nine — Forty

Sigma Beta Mu



A group meeting of Sigma Beta Mu

Sigma Beta Mu, the Music Club, was organized in 1932 for the purpose of keeping the music students who had left school in close contact with the school and with the younger members of the music department; of giving all the members numerous opportunities to perform before a sympathetic yet critical audience; of hearing well known works repeatedly and of becoming familiar with modern music that is seldom played.

Each year the music club sponsors a number of musical events. Among the outstanding programs of this year was the one given by the Metropolitan Four, a mixed quartette composed of opera singers.

The club also has to its credit a variety of contributions to the music department: grand piano, electric victrola, records, books, and other articles necessary for the department's equipment.

OFFICERS

BETTY STURROCK - - - - - President
HOPE DAVIS - - - - - Vice-President
ALICE VOEGELI - - - - - Secretary-Treasurer



A. Voegli, B. Sturrock, H. Davis

Activities OF NINETEEN

Sodality



Standing: M. Wand, A. Cejka, M. L. Maxwell, M. Concannon, B. Ball, H. Guyot
Seated: D. Barada, G. Duggan, K. Disch, H. Kleir, M. Mitchell, L. Flynt



M. Wand, K. Disch, G. Duggan

OFFICERS

KAY DISCH - - - - - Prefect
MARY WAND - - - - - Vice-Prefect
GERALDINE DUGGAN - - - Secretary-Treasurer

Our Sodality, the center of the spiritual life at Fontbonne, tries to make the sodalists ever conscious of its motto: "To Jesus through Mary". It sponsors Missa Recitata and the guard of honor on First Friday.

During the year many remarkable things were accomplished. Baskets of food and clothing were collected and distributed at Christmas. New members were received in a most impressive ceremony held in the chapel on February 2, the feast of the Purification of our Blessed Mother.

The peak of the year's activities was, of course, our May Day celebration on May 1, when Kay Disch, our May Queen, honored Mary, our Mother, the true Queen of May.

Thirty-nine — Forty

Student Council



Standing: A. Voegeli, C. Aylward, M. Concannon, J. Fogerty, M. Stebbins, M. Potts, J. Bristol, K. Disch
Seated: A. Hannagan, G. Duggan, M. Tammany, M. Mitchell, M. Dufaux, M. Nelson,
B. La Barge, D. Barada

The Student Council, which directs and governs the student activities throughout the year, is composed of the officers of the Student Association, the presidents of the classes, and representatives of the various clubs in the college.

The duties of this organization are to assist the faculty in promoting among the students the highest standards of honor and integrity in matters of personal conduct and public interest, and to bring about a closer cooperation between the students and the faculty. The objective of the Council is to express the united opinion of the student body in matters of general college interest.

The Council is headed by Mae Dufaux, the president of the Student Association.

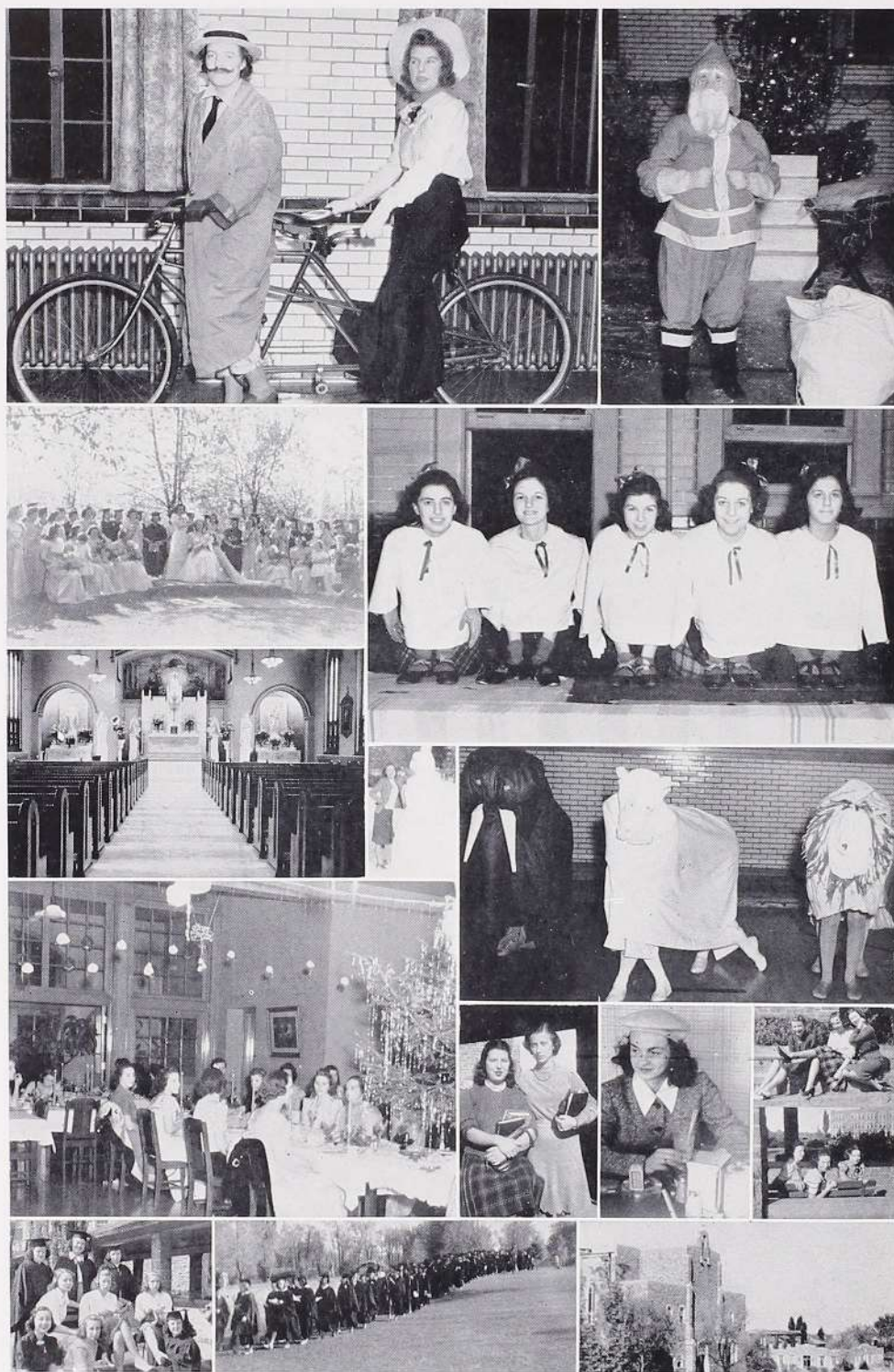
STUDENT ASSOCIATION OFFICERS

MAE DUFAUX - - - - - President
MARY EMILY MITCHELL - - - - Vice-President
MARY KATHERINE TAMMANY - - - - Treasurer
BETTY ANN LaBARGE - - - - - Secretary



B. La Barge, M. Mitchell, M. Dufaux, M. Tammany

Curtain Calls . . .



Pictures by Rows, From Left to Right: Tintype for Two. Hold That Pillow!
 Sunlight and Shadow in May. Full House, Quints!
 Sursum Cordal Betty in Iceland. Swing and Sway, in Person.
 Prelude to Yuletide. Posing? The Pause Between Classes. Beauty Come in Threes.
 Campus Charm(ers). Over the Hill to——? Ave Atque Vale!

Our Patrons



Miss Eleanora A. Baer	Mr. Jerome Kriegshauser
Mr. Willis W. Benson	Mr. George P. Kuehner
Mr. August Busch, Jr.	Mayor and Mrs. B. W. LaTourette
Miss Dorothy Bussmann	Miss Elouise Laumann
Mr. and Mrs. A. J. Cejka	Mr. Patrick Lavin
Mr. and Mrs. Alphonse H. Clemens	Mr. and Mrs. John J. McAtee
Mr. and Mrs. Anthony Colombo	Mr. and Mrs. W. A. Meletio
Miss Hope Davis	Mr. Walter H. Miller
Delta Phi	Miss Dorothy Morse
Mrs. Arthur J. Donnelly	Mrs. Joseph E. Muckerman
Miss Lucille Donnelly	Mr. Lawrence M. Mullen
Mrs. Mark J. Dotzler	Mr. and Mrs. Arthur E. Nelson
Mrs. P. J. Driscoll	Mr. and Mrs. Alfred J. Noble
Mayor and Mrs. Mait C. Fogerty	Miss Ann O'Connell
Fontbonne Cafeteria	Miss Jane O'Connell
Fontbonne College Alumnae	Miss Virginia O'Hearn
Fontbonne Poetry Club	Mrs. F. S. Pickles
The Footlights Club	The Press Club
The French Club	Mr. and Mrs. John A. Purcell
Miss Virginia L. Fuehlen	Resident Students' Association
Mr. Edward Griesedieck	Mr. Antonio Ruttino
Mr. John J. Griffin	Miss Mary Margaret Shackelford
Mr. and Mrs. Frank J. Guyol	Mr. and Mrs. Chas. A. Shaw
Miss Angela Hannagan	Sigma Beta Mu
Mr. and Mrs. Edward M. Hannagan	Very Rev. Msgr. Leo J. Steck
Miss Rosemary Hayden	Mrs. F. M. Switzer
Miss Gertrude M. Horgan	Miss Alma Tackaberry
International Relations Club	Mr. and Mrs. S. C. Tracy
Mayor and Mrs. Alfred H. Kerth	Miss Mary Elizabeth Tracy
Mr. and Mrs. John F. Krey	A Friend



FONTBONNE COLLEGE

A Catholic Institution conducted by the Sisters of St. Joseph of Carondelet for the higher education of women.

A Corporate College of St. Louis University and as such fully accredited by the North Central Association of Colleges and Secondary Schools, by the Association of American Colleges, and by the National Catholic Educational Association.

A degree-granting institution empowered to grant the degrees of A.B., B.S., and B.S. in Home Economics.

RESIDENT AND DAY STUDENTS

Address the Registrar

FONTBONNE COLLEGE

Wydown and Big Bend Boulevards

•

St. Louis, Missouri

ST. JOSEPH'S ACADEMY FONTBONNE

Wydown and Big Bend Boulevard
ST. LOUIS, MO.

A Catholic High School for Girls

Affiliated with the National Catholic Educational Association; accredited by the University of Missouri and the North Central Association of Colleges and Secondary Schools, and officially approved by the State Board of Education of Missouri as a Four-Year Senior High School, Class A.

Conducted by the
SISTERS OF ST. JOSEPH OF CARONDELET



COMPLIMENTS
OF
JUNIOR CLASS



Compliments
of
SENIOR CLASS

.

Compliments
of
SOPHOMORE CLASS

.

Compliments
of
FRESHMAN CLASS

FOR
CATHOLIC INSTITUTION
BONDS

See

R. J. BURNS
Dempsey-Tegler and Co.

303-309 VICTORIA BUILDING
407 N. Eighth St.
St. Louis, Mo.

COVERS

and

BINDING

for the

1940 FONTBONNE

by

BECKTOLD COMPANY

OLIVE AT BEAUMONT
St. Louis, Mo.

Combs-Duval Studio

CREATORS OF DISTINCTIVE PORTRAITS

4482 Washington Boulevard

•

Telephone

FRanklin 1705

Compliments

of

**SWITZER
YELLOW
JACKET**

•

EMIL FREI, Inc.

•

RUBICAM SCHOOL

offers

THOROUGH PREPARATION FOR SECRETARIAL,
STENOGRAPHIC, AND ACCOUNTING POSITIONS;
Placement Service without charge to Rubicam Graduates;
Summer Classes in Shorthand and Typewriting

DAY AND EVENING CLASSES
INDIVIDUAL AND GROUP INSTRUCTION

Three Conveniently Located Schools

4933 Delmar Boulevard -- FOrrest 3900 • 3469 S. Grand Boulevard -- LAclede 0440
7701 Forsythe Boulevard -- CAbany 4102

Phone, GArfield 6297

Expert Optometrists and Opticians

DR. ALOIS A. WINTERER
DR. GEORGE A. WINTERER

Eyes Scientifically Examined
and Glasses Made to Correct
All Defects of the Eye

202 N. Seventh (Near Pine) St. Louis

SOUTH SIDE MACHINE CO.

Industrial Machine Work

Experts in

Crushing and Contractors' Machinery
Builders of Special Machinery
Production Experts
Repair and Engine Work

3761 EILER AVE.
Riverside 7171

ST. LOUIS,
MO.

Compliments

of

THOS. J. BLONG
PAINTING CO.

3615 Page Blvd.

FRanklin 2377

Compliments

of

MODERN
LANGUAGE
DEPARTMENT

FOR
ICE
COAL
FUEL OIL

Call JEfferson 1000

THE CITY ICE AND FUEL CO.

3638 OLIVE STREET

JOHN H. McCARTHY
MONUMENT CO.

4642 West Florissant Ave.
GOodfellow 0580

KALETTA STATUARY CO.

Liturgically Correct Church Statuary
Altars . . . Church Furniture . . . Pews
Choir Halls . . . Draperies
Church Metal Ware . . . Furnishings

3715-21 CALIFORNIA AVENUE
St. Louis, Missouri

Compliments

of

A. H. DUDENHOEFFER
CANDY COMPANY

2617 Gravois Ave. - LAclede 1825

MISSOURI RIDING STABLES

5200 Berthold -- STerling 2424

HORSES

Rented, Boarded and Trained

Riding Instructions
By Competent Riding Masters

Erker's

Take Gorgeous

"FULL
COLOR"
STILLS

with
MINIATURE
CAMERAS



Our experienced personnel is ready and willing to show you this new phase of picture making and assist you in the operation of your camera.

610 OLIVE ST.

Erker's
Guild Opticians

518 N. GRAND

Compliments

of

**UNION
BISCUIT
CO.**

Double Cola

Moreland Club

Ritz Beverage

All Flavors

CHestnut 5338

QUALITY DAIRY COMPANY, Inc.

4630 West Florissant Avenue - St. Louis, Missouri

"None Better" Products

MILK - CREAM - ICE CREAM - BUTTER - CHEESE

"Quality Products for Quality Folks"

•

GOodfellow 6000

GOodfellow 6001

Compliments
of

**St. Anthony's
High School**

Compliments of

AL . . . the Tailor
FORSYTHE CLEANERS & TAILORS

CAbany 9372.....7335 Forsythe Blvd.
CAbany 9336..7604 Wydown Blvd. (Clayton)
CAbany 9418.....624 North & South Rd.
CAbany 8778.....7354 Forsythe Blvd.

University City, Mo., and Clayton, Mo.

Compliments of

**HAWTHORN
COAL COMPANY**

608 Arcade Bldg. - MAin 3050, 3051

Compliments

of

A FRIEND

M. R.

Visit

**THE
PARKMOOR**

All Cream Ice Cream

*Delicious
Sandwiches*

**KONCEN
MEAT
COMPANY**

Compliments of

JOHN M. CRUTSINGER

St. Louis County Surveyor

For

L. C. Smith, Standard and Corona
Portable Typewriters
Standards and Silent Models

G. A. LIVINGSTONE

**L. C. SMITH AND CORONA
TYPEWRITER, INC.**

1108 Locust

MAin 3215

**J. M. DONLEY
TRUCK SERVICE, INC.**

Exclusive Truckery

for

**Procter & Gamble
Distributing Co.**

**J. LEWIN
BOOKBINDING AND
SAMPLE COMPANY**

1602 Locust St.
St. Louis, Mo.

CERFLEX—Flexible Plastic Binding
PARALLEX—Wire Binding
Edition Binding—Pamphlet Binding

College Annuals

Greetings

from

A Friend

Country Side Florist

9800 Manchester Rd.

REpublic 1300

Another

BOOK BY

CENTRAL

Central Engraving Co.

114 N. Seventh St.

St. Louis, Mo.

McCaughen and Burr

Fine Arts

Established 1860

1110 α Locust St.

CEntral 1625

St. Louis, Mo.

Courtesy of

**PEACOCK
SHOE SHOP**

Best Wishes

from

W. F. B. CO.

**HESS & CULBERTSON
JEWELRY CO.**

*Nearly 60 Years
of Quality*

Olive at Ninth

The Trend to

**FINE
CLEANING**

Is a Trend to
CHAPMAN SERVICE



Compliments of

STANLEY WALLACH

Prosecuting Attorney

St. Louis County

Compliments of

**CONSUMER'S GROCERY
AND MEAT COMPANY**

Eighth and Clark

The House of Quality
ART SUPPLIES

•

BADER'S

1112 Locust

St. Louis, Mo.

Compliments

of...

**SUNFREEZE
ICE CREAM**

•

Raith Bros. Produce Co.

The Best in Fruits and Vegetables

Distributors of

DEWKIST FROZEN FOODS

929 N. Fourth St.

CEntral 3024

4424 West Papin

JEfferson 2522