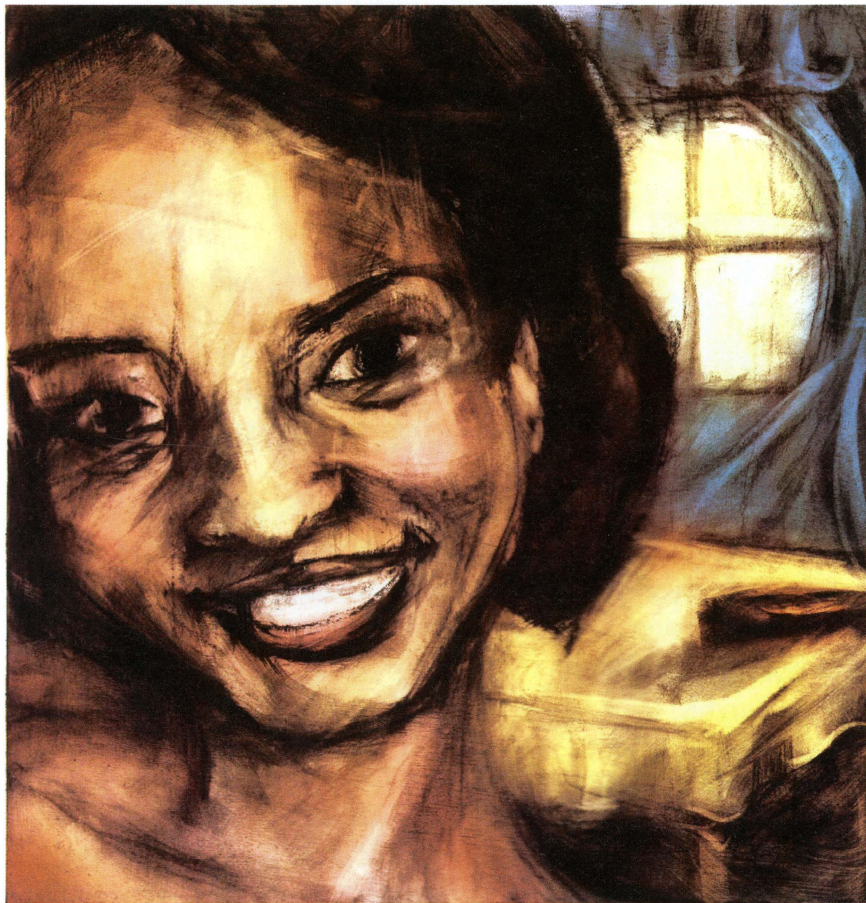


**MUSTARD SEED THEATRE
PRESENTS**



Crumbs From the Table of Joy

by Lynn Nottage

August 27 - September 12, 2010

come
PLAY with us!
2010 - 2011
PRODUCTIONS:



**CRUMBS FROM THE
TABLE OF JOY**

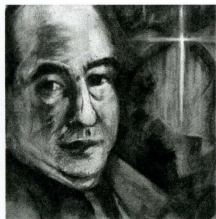
African-American teenager Ernestine Crump uses movie fantasies to escape from the challenges of her recent move to New York and a most unexpected Step-Mother.

Aug. 27 - Sep. 12, 2010

THE CHOSEN

Two teen-age Jewish boys meet as rivals in a baseball game and begin an unlikely friendship, navigating the opposite political and religious views of their fathers.

Oct. 22 - Nov. 7, 2010



SHADOWLANDS

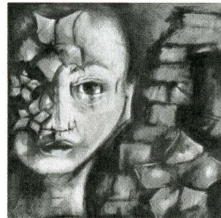
Based on the real-life story of C.S. Lewis, who unexpectedly falls in love with young American poet Joy Gresham. A romance with a bittersweet ending.

Jan. 27 - Feb. 13, 2011

TILL WE HAVE FACES

A powerful Queen must surrender to invisible forces to rescue her sister and discover the secret of true beauty. Adapted from the novel by C.S. Lewis.

Apr. 15 - May 1, 2011



CRUMBS FROM THE TABLE OF JOY

by Lynn Nottage

CAST

Ernestine Crump	Alexis White
Ermina Crump	Tyler White
Godfrey Crump	Chauncy Thomas*
Lily Ann Green	Patrese McClain
Gerte Schulte	Jill Ritter Lindbergh

STAFF AND CREW

Director	Linda Kennedy
Stage Manager	Danny Maly*
Assistant Stage Managers	Phillip Bettison Katie Donnelly
Set Design	Brian Purlee
Light Design	Bess Moynihan
Costume Design	JC Kracijek
Sound Design	Terell Randall, Sr.
Prop Master	Thomas Stevenson
Technical Director	Jon Hisaw
Sound Board Operator	David Chandler
Light Board Operator	Zoe Sullivan
Wardrobe crew	Josie Zeugin
Publications Intern	Liz Richter

*denotes member of Actors' Equity Association,
the union of professional actors and stage managers

****Special thanks to The Black Repertory Company of St. Louis
for their set and props support during this production.****

PLAY INFORMATION

CHARACTERS:

Ernestine Crump	Seventeen
Ermina Crump	Ernestine's sister, fifteen
Godfrey Crump	Ernestine & Ermina's father, thirty-five
Lily Ann Green	Ernestine & Ermina's aunt, thirty-five
Gerte Schulte	Thirty

SETTING: 1950, Brooklyn, NY

PROLOGUE: Fall

ACT I: Winter

Scene 1: The Living Room

Scene 2: The Living Room

Scene 3: The Kitchen

Scene 4: The Living Room

Scene 5: Stoop outside of the Apartment

Scene 6: The Living Room

ACT II: Spring

Scene 1: Limbo

Scene 2: Brower Park

Scene 3: The Living Room

Scene 4: The Living Room

EPILOGUE: Summer

SYNOPSIS

Godfrey Crump, a reborn Christian and widower, has recently uprooted his family from rural Florida and settled them in Brooklyn, New York. A follower of the elusive, enigmatic Father Divine, he attempts to corral his family into a life of piety. Ernestine, who often escapes through daydreams, questions the precarious nature of their new life. Unexpectedly, Lily arrives at the Crumps' Brooklyn apartment. She moves in, bringing with her ideas of proletariat uprisings, communism, and black power – undercutting Godfrey's authority. Ernestine must choose between her father's hopes and her own ambitions.



Brooklyn, NY 1950

ABOUT THE AUTHOR

Lynn Nottage is an award winning contemporary playwright from Brooklyn, New York. A graduate of Brown University and the Yale School of Drama, Nottage is best known for her racially and historically explorative works. *Crumbs from the Table of Joy* premiered in 1996 at the South Coast Repertory in Costa Mesa, California and won two NAACP Theatre Awards in performance. It also solidified her career as a cutting-edge playwright. Nottage has been honored repeatedly for her works with awards such as the Guggenheim Fellowship ('05), the MacArthur Genius Grant ('07), and the Pulitzer Prize for Drama ('09). She currently resides in Brooklyn.

“The 1950s was such a moment in American history in which I felt so much change... everything I had seen was in black and white. And I wanted to make it colorful. So I started writing ‘Crumbs from the Table of Joy’ to try to understand that era.”



-Lynn Nottage

Center Stage Production Notes, May 14, 2009

HISTORICAL NOTE

Crumbs examines the personal nature of political dynamism. Of the many social changes occurring during the 1950's, the Communist Party of America, Jim Crow laws, and Father Divine's Peace Mission are explored for their impact on American society. These movements provide a significant backdrop for the Crump family.

In its heyday—1944, the Communist Party of America (CPUSA) was comprised of 80,000 members. It was a combined force of Marxist-Leninist communists, leftists, and anarchists. However, by 1947, after years of party disunity and government attacks, numbers dwindled to around 5,000. By 1949, McCarthyism was in full-swing and created an environment of apprehension and distrust. If tried and

convicted, supposed party members could be imprisoned or deported. If arrested, most accused lost their jobs regardless of innocence, for fear of association.



The CPUSA's commitment to civil rights led to ties with the ACLU. This inadvertently caused hundreds of imprisonments for "subversive behavior" regarding the work of activists. Most activists were involved in the fight against Jim Crow laws. These laws, first set in place

in 1876, restricted the civil liberties of African-Americans, racially segregated all aspects of life, and prohibited African-Americans to vote. Jim Crow laws also supported the notion of "separate but equal" races and created an environment of violent racism, social obstacles, disproportionate wealth, and educational disparity.

continued on next page...

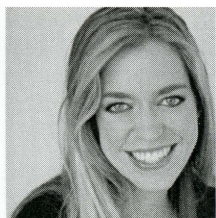
HISTORICAL NOTE, CONTINUED

Father Divine was the founder of The Peace Mission. He began his work around 1912 as a preacher. An eccentric, he claimed he had no name but rather that he was God. He was widely considered to be a fraud and harmful to the public. Despite this image, he had a strong following in Harlem, New York. He was loosely associated with the CPUSA and was keenly interested in their involvement with the civil rights movement. However, after a series of bad press involving sex scandals, lavishly spending contributions, apparent fraud, and proclamations of immortality, his cultish membership dwindled severely.



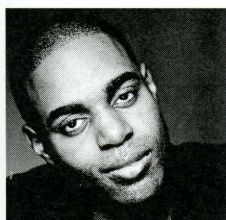
*Mustard Seed Theatre receives generous support from
the Fontbonne Community Connection.*

BIOGRAPHIES – CAST



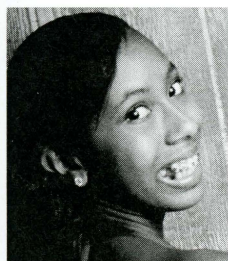
Jill Ritter Lindbergh is excited to be in her first Mustard Seed Theatre production. She has worked with several local companies, including ACT Inc., Stray Dog, The Orange Girls, Muddy Waters Theatre Company, St. Louis Shakespeare, Magic Smoking Monkey Theatre, WEPG, and HotCity Greenhouse.

Patrese McClain was last seen in St. Louis as Lady Capulet in *Romeo and Juliet* at the prestigious Black Repertory Theatre and is excited to be back in this wonderful city. She is originally from Chicago and has worked with many theatre companies there including the Goodman Theatre, Court Theatre, Lookingglass Theatre, and Collaboration Theatre.



Chauncy Thomas is thrilled to be reunited with so many former cast and crew members. He spent three seasons as a member of the Imaginary Theatre Company. Favorite credits include Mercutio in *Romeo and Juliet* (The Black Rep) and the Lord of the Underworld in *Eurydice* (Orange Girls).

Alexis White is an honor student attending Hazelwood Central High School and has participated in The Black Repertory Educational Workshops and the Summer Performing Arts programs for five years. She also was a part of the ensemble cast in *Sarafina!*, *Black Nativity*, and *The Me Nobody Knows* with the Black Rep.



Tyler White is an honor student attending Hazelwood Central High School. She has participated in The Black Rep Educational Workshops and the Summer Performing Arts programs for five years. She also was a part of the ensemble cast in *Sarafina!*, *The Me Nobody Knows* and *Black Nativity* with the Black Rep.

BIOGRAPHIES – STAFF

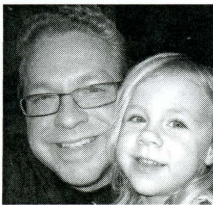


Linda Kennedy is a veteran actress at the Black Repertory Theatre and has been named Best Actress by the River Front Times, and the St. Louis Post-Dispatch's Judy Awards. A Kevin Kline nominee for her performance in the Upstream production *Majriah's Pictures*, she received a nomination for the Visionary Awards and was awarded the Successful Working Artist Award. She received the Missouri Arts Individual Artist Award for 2008 and the Griot Award from the Black World History Museum. She directed the New Jewish Theatre's *I'm not Rappaport* and made her directing debut with the Black Rep directing *Before It Hits Home*. Linda is the Artistic Associate at The Black Rep and is currently performing with Ron Himes in *Remembrance of and Voices from Harlem*.



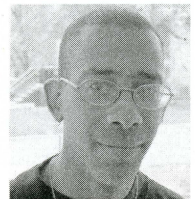
Jennifer 'JC' Krajicek earned a Kevin Kline Outstanding Costume Design nomination for her design of St. Louis Shakespeare's *Dangerous Liaisons*. She has worked professionally with Webster University and Opera Theatre of Saint Louis. JC is currently the Costume Supervisor for The Black Rep.

Bess Moynihan currently works as the Master Electrician and Shop Supervisor for Fontbonne University and Mustard Seed Theatre. Previous design credits include Fontbonne's *The Big Slam* and *Red Herring*, Mustard Seed's *Tartuffe*, and The Orange Girls' *Wonder of the World*.



Brian Purlee is proud to serve as Scenic Designer for MST's production of *Crumbs from the Table of Joy*. Other design credits include *The Black Nativity*, *In the Continuum* and *Boesman and Lena* at The Black Rep, *Smoke and Mirrors* and *It Runs in the Family* in Clarksville, Indiana.

Terell Randall, Sr. is honored to be working on his first production with Mustard Seed Theatre. Terell has been involved in the Saint Louis theater community for well over 20 years, both on-stage and behind-the-scenes.



BIOGRAPHIES— CREW



Phillip Bettison is a Senior at Fontbonne studying Theatre Education and has worked both on and offstage for many MST productions. Look for Phil in MST's *Till We Have Faces* in April. Thanks Mom and Dad and much love to Cherry.

David Chandler is a Senior at Fontbonne University and can be seen onstage this October in MST's *The Chosen*. He would like to thank his family for their continued support and to all the cast and crew for many smiles.



Katie Donnelly is a 4th year Performing Arts Student at Fontbonne University. She has previously worked with Mustard Seed on *Remnant*, *The Unseen*, and *Measure For Measure*.

Jon Hisaw has been the Assistant TD and Master Carpenter at Fontbonne University for the past 12 years. He also does TD work at Pattonville High School.

Danny Maly* is delighted to join Mustard Seed for the first time, having assistant-stage managed *Hamlet* for The Shakespeare Festival of St. Louis. Danny also serves as Production Manager for The New Jewish Theatre and is the AEA Stage Manager for The Repertory Theatre's Imaginary Theatre Company.

Tom Stevenson is a Senior at Fontbonne University and has previously worked on MST's *Measure for Measure* and *The Good Times are Killing Me*.

Zoe Sullivan was seen as Marianne in Mustard Seed's Spring production of *Tartuffe*. She is a sophomore Theatre major.

Josie Zeugin is a second year student at Fontbonne University and previously worked with MST on *Tartuffe*. She was recently seen onstage in Clayton Community Theatre's *Anne of Green Gables* as Miss Stacy.

AROUND TOWN



NOW PLAYING... NOW PLAYING... NOW PLAYING... NOW PLAYING... NOW PLAYING...

SOUNDSTAGE PRODUCTIONS (314) 750 6206

An Ideal Husband, Aug 20-29
The Sunset Limited, October 1-10

JPEK CREATIVE WORKS (618) 791 5694

Real Life "A Street Paradigm", Aug 25-29

MUSTARD SEED THEATRE (314) 719 8060

Crumbs from the Table of Joy, Aug 27-Sept 12

STAGES ST. LOUIS (314) 821 2407

State Fair, September 3-October 3

The REPERTORY THEATRE OF ST. LOUIS (314) 968 4925

You Can't Take it With You, September 8-October 3

HOTCITY THEATRE (314) 289 4060

Equus, September 10-25

STRAY DOG THEATRE (314) 865 1995

Master Class, September 16-October 2

WEST END PLAYERS GUILD (314) 367 0025

A Picasso, September 24-October 3

INSIGHT THEATRE COMPANY (314) 239 9040

Proof, September 29-October 10

NEW LINE THEATRE (314) 773 6526

I Love My Wife, September 30-October 23

ST. LOUIS SHAKESPEARE (314) 361 5664

The Tempest, October 1-10

Y-REP TROUPERS (636) 532 6515

Hansel and Gretel, October 1-3

The NEW JEWISH THEATRE (314) 432 5700

My Name is Asher Lev, October 6-24



**PROMOTING AND CELEBRATING
EXCELLENCE IN PROFESSIONAL
ST. LOUIS THEATRE**

www.kevinklineawards.org
(314) 531 7529

AMD anders minkler & diehl llp
CPAs + Consultants

MUSTARD SEED THEATRE

Fontbonne University Fine Arts Theatre
6800 Wydown Blvd.
Clayton, MO 63105
314-719-8060

mustardseedtheatre@gmail.com
www.mustardseedtheatre.com